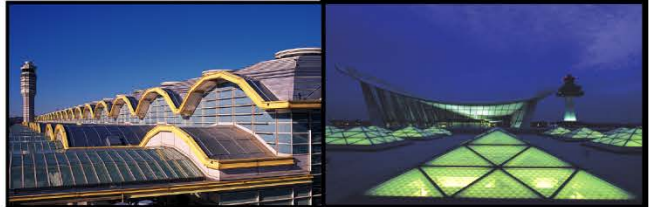


March  
2015

# Air Traffic Statistics



METROPOLITAN WASHINGTON AIRPORTS AUTHORITY

# Metropolitan Washington Airports Authority

## Air Traffic Statistics

### Table of Contents

#### Summary

Air Traffic Summary .....	1
SH&E Air Traffic Schedule Activity.....	3
Passenger Trends.....	5
Total Passengers 4-Year Comparison - DCA, IAD, BWI.....	6
Total Commercial Passenger Enplanements.....	7
Market Share and Percentage of Top Airlines - DCA, IAD, BWI.....	9

#### Air Traffic Statistics - DCA

Monthly Air Traffic Summary – Current Month.....	10
Monthly Air Traffic Summary – Year-to-Date .....	12
Monthly Air Traffic Summary – Last 12 Months .....	14

#### Air Traffic Statistics - IAD

Monthly Air Traffic Summary – Current Month.....	16
Monthly Air Traffic Summary – Year-to-Date .....	18
Monthly Air Traffic Summary – Last 12 Months .....	20

## Air Traffic Summary March 2015

### Passenger Activity (in Millions)

		Current Month			Year-to-Date			Last 12 Months			
		DCA	IAD	System	DCA	IAD	System	DCA	IAD	System	
<b>Total</b>	<b>Passengers</b>	1.9	1.7	3.6	5.0	4.4	9.4	21.2	21.4	42.6	
	<b>% Change</b>	13.6%	(6.0%)	3.6%	8.4%	(4.0%)	2.2%	4.5%	(1.5%)	1.4%	
<b>Commercial</b>	<b>Dom</b>	Passengers	1.9	1.1	3.0	4.9	3.0	7.9	20.8	14.2	35.0
		% Change	14.0%	(6.9%)	5.2%	8.6%	(3.6%)	3.6%	4.6%	(2.5%)	1.6%
	<b>Int'l</b>	Passengers	< 0.1	0.5	0.6	0.1	1.4	1.5	0.4	7.0	7.4
		% Change	(5.0%)	(4.6%)	(4.7%)	0.5%	(5.1%)	(4.8%)	0.1%	0.4%	0.4%

Note: System totals may not sum due to rounding.

U.S. industry average passenger enplanements as reported by Airlines for America (A4A):

Enplanements	Current Month	Year-to-Date
System	3.4%	3.5%
Domestic	3.5%	3.4%
International	2.9%	4.0%

### Ronald Reagan Washington National Airport

- Domestic commercial passenger activity increased 14.0% in March 2015 compared to March 2014. Significant activity by carrier follows:

Airline	Comments
American + US Airways	<ul style="list-style-type: none"> <li>2.4% decrease from March 2014 in passenger activity due to slot divestitures in June and July 2014</li> <li>Increased service to Los Angeles in June 2014, Cincinnati in December 2014, and Fort Myers, Orlando, and Portland in March 2015</li> </ul>
Southwest + AirTran	<ul style="list-style-type: none"> <li>149.3% increase in passenger activity from slots divested by American</li> <li>New service to Chicago Midway, Nashville, and New Orleans in August 2014; Tampa in October 2014; and Akron, Dallas Love, and Indianapolis in November 2014</li> <li>Increased service to Houston and St. Louis in November 2014</li> </ul>
Virgin America	<ul style="list-style-type: none"> <li>202.9% increase in passenger activity with new service to Dallas Love in November 2014</li> </ul>
JetBlue	<ul style="list-style-type: none"> <li>53.0% increase in passenger activity from slots divested by American</li> <li>New service to Charleston and Hartford in July 2014; and Jacksonville, West Palm Beach, and Fort Myers in January 2015</li> <li>Increased service to Tampa in July 2014, and Ft. Lauderdale and Orlando in January 2015</li> </ul>

- Transborder passenger traffic decreased 5.0% in March 2015 as a result of discontinued service by American + US Airways to Montreal and reductions to Nassau in June 2014, as well as reduced service to Toronto in March 2015.
- The combined American + US Airways operations, including its regional affiliates, had the largest commercial passenger market share with 51.0%, a decrease compared to 59.4% in March 2014.

## Washington Dulles International Airport

### Domestic Passenger Activity

- Domestic commercial passenger activity declined 6.9% in March 2015. Significant activity by carrier follows:

<b>Airline</b>	<b>Comments</b>
United	<ul style="list-style-type: none"><li>14.3% decrease in passenger activity</li><li>Discontinued service to 13 domestic destinations, including four now being served by Silver Airways</li><li>Reduced service to 40 destinations partially reflecting seasonality</li><li>New seasonal service to Steamboat Springs in February 2015 and Jackson Hole in March 2015</li><li>Increased service to New Orleans in October 2014; and Chicago O'Hare, Los Angeles, Charleston (SC), and Seattle in March 2015</li></ul>
American+US Airways	<ul style="list-style-type: none"><li>6.2% decrease due to reduced service to Los Angeles in June 2014, Dallas/Fort Worth in November 2014, and Charlotte in January 2015</li></ul>
JetBlue	<ul style="list-style-type: none"><li>18.7% decline due to discontinued service to Long Beach in September 2014 and reduced service to Boston in November 2014</li></ul>
Frontier	<ul style="list-style-type: none"><li>New service began in August 2014</li></ul>
Alaska	<ul style="list-style-type: none"><li>New service began in March 2015</li></ul>

### International Passenger Activity

- March 2015 international commercial passenger traffic decreased 4.6%. Significant activity by carrier follows:

<b>Airline</b>	<b>Comments</b>
United	<ul style="list-style-type: none"><li>11.4% decrease in passenger activity</li><li>Discontinued service to San Salvador in April 2014, seasonally discontinued service to Rome in October 2014, and reduced service to eight destinations</li><li>Increased service to Cancun, Ottawa, and Punta Cana in March 2015</li><li>New service to San Jose del Cabo in March 2015</li></ul>
South African	<ul style="list-style-type: none"><li>24.8% decrease due to seasonal aircraft down-gauging to Dakar in September 2014</li></ul>
Air France	<ul style="list-style-type: none"><li>13.9% decrease as a result of aircraft down-gauging in December 2014</li></ul>
Air China	<ul style="list-style-type: none"><li>New service began in June 2014</li></ul>
Brussels Airlines	<ul style="list-style-type: none"><li>Resumed service in March 2015</li></ul>
All Nippon	<ul style="list-style-type: none"><li>9.9% increase due to increased capacity</li></ul>
COPA	<ul style="list-style-type: none"><li>14.7% increase due to increased capacity as a result of aircraft up-gauging in November 2014</li></ul>

- United Airlines, including its regional affiliates, had the largest commercial passenger market share of 62.6%, a decrease compared to 68.0% in March 2014.

### Cargo Activity

- For the month of March 2015, total cargo decreased 2.0% at Dulles from a year earlier. Domestic cargo increased 0.3% primarily due to an increase on UPS (18.9%) that offset the decline on FedEx (2.9%).
- International cargo decreased 3.0% mainly due to activity decline in Air France (53.2%), British Airways (24.6%), KLM (26.5%), Emirates (21.2%), and resumed service on Brussels (90.9%) at the end of March 2015. These declines were partially offset by increased cargo activity on Saudia (95.3%), Korean (63.7%), Ethiopian Airlines (97.1%), and new service by Air China, while activity on United remained stable.

## Baltimore-Washington International Airport

- Current month commercial passenger activity increased 4.0% from March 2014.
- BWI commercial passenger activity lagged National by 18.7K commercial passengers (-1.0%), and outpaced activity at Dulles by 257.3k commercial passengers (15.6%).
- Southwest's passenger market share totaled 72.5%, an increase from 71.7% in March 2014.
- Cargo activity at BWI totaled 8.9k metric tonnes, a 7.0% increase from a year earlier primarily as a result of increases on United (55.0%), DHL (13.3%), and Southwest (12.9%). UPS and FedEx had a small combined growth of 1.7%.

**Ronald Reagan Washington National Airport**  
Air Traffic Schedule Activity  
March 2015 vs. March 2014

March 2015:	Daily Departures	Airlines*	Unduplicated Destinations
<b>Domestic</b>			
<b>Passenger service information -</b>			
Mainline	208	9	--
Regional Affiliate	<u>193</u>	<u>11</u>	--
Domestic Total	401	20	79
<b>Transborder/International</b>			
<b>Passenger service information -</b>			
Mainline	1	2	--
Regional Affiliate	<u>10</u>	<u>4</u>	--
Transborder/International Total	11	6	4

March 2014:	Daily Departures	Airlines*	Unduplicated Destinations
<b>Domestic</b>			
<b>Passenger service information -</b>			
Mainline	169	9	--
Regional Affiliate	<u>223</u>	<u>10</u>	--
Domestic Total	392	19	87
<b>Transborder/International</b>			
<b>Passenger service information -</b>			
Mainline	0	1	--
Regional Affiliate	<u>13</u>	<u>3</u>	--
Transborder/International Total	13	4	5

\* The following airlines are counted as one airline:  
Southwest and AirTran  
American and US Airways  
Regional carriers flying for multiple mainline carriers

Source: DIIO, May 6, 2015

**Washington Dulles International Airport**

Air Traffic Schedule Activity

March 2015 vs. March 2014

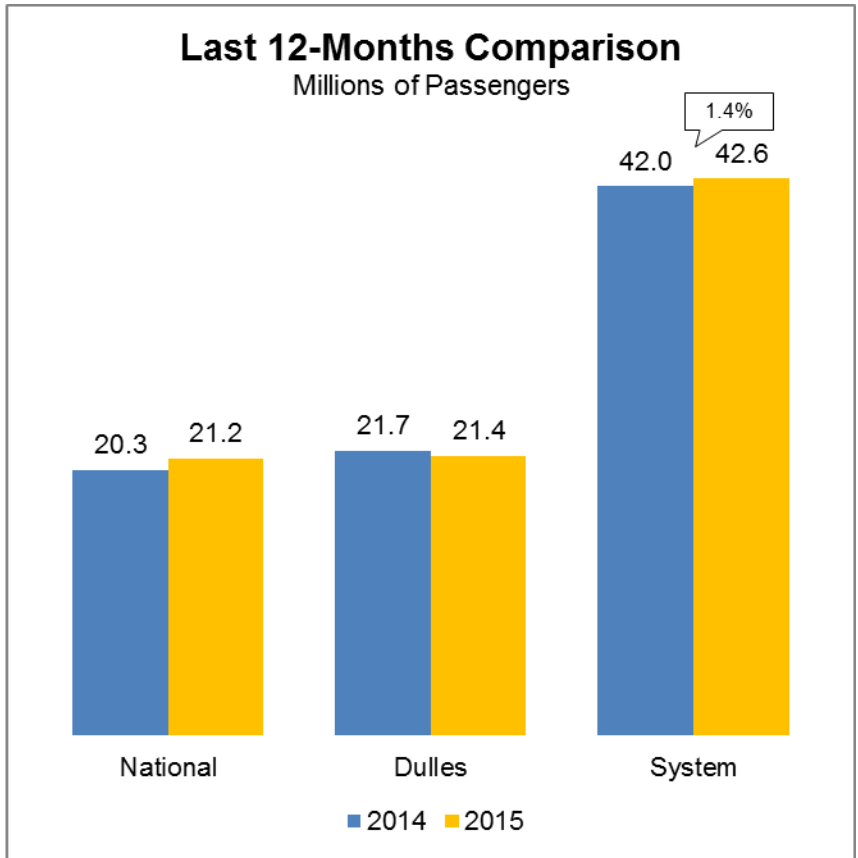
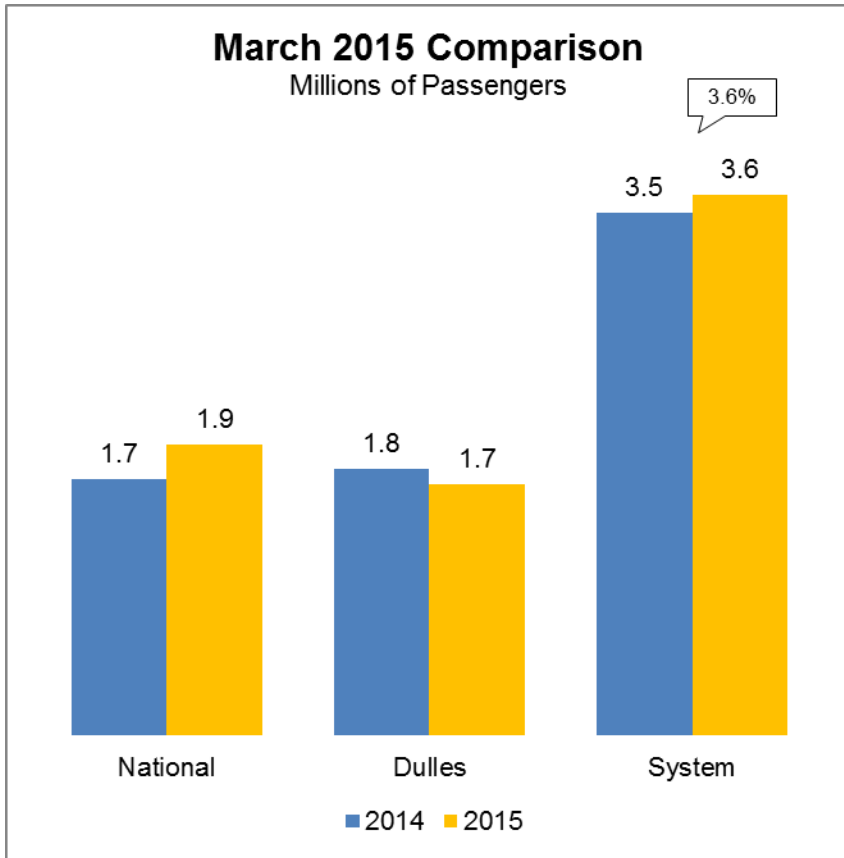
<b>March 2015:</b>	<b>Daily Departures</b>	<b>Airlines*</b>	<b>Unduplicated Destinations</b>
<b>Domestic</b>			
<b>Passenger service information -</b>			
Mainline	102	10	--
Regional Affiliate	<u>149</u>	<u>10</u>	--
Domestic Total	251	20	79
<b>Transborder/International</b>			
<b>Passenger service information -</b>			
Mainline	48	27	--
Regional Affiliate	<u>10</u>	<u>3</u>	--
Transborder/International Total	58	30	44

<b>March 2014:</b>	<b>Daily Departures</b>	<b>Airlines*</b>	<b>Unduplicated Destinations</b>
<b>Domestic</b>			
<b>Passenger service information -</b>			
Mainline	96	7	--
Regional Affiliate	<u>194</u>	<u>13</u>	--
Domestic Total	290	20	82
<b>Transborder/International</b>			
<b>Passenger service information -</b>			
Mainline	52	25	--
Regional Affiliate	<u>11</u>	<u>4</u>	--
Transborder/International Total	63	29	44

\* The following airlines are counted as one airline:  
 Pacific Wings and Sun Air International  
 Avianca and TACA  
 American Airlines and US Airways  
 Austrian and Tyrolean  
 Regional carriers flying for multiple mainline carriers

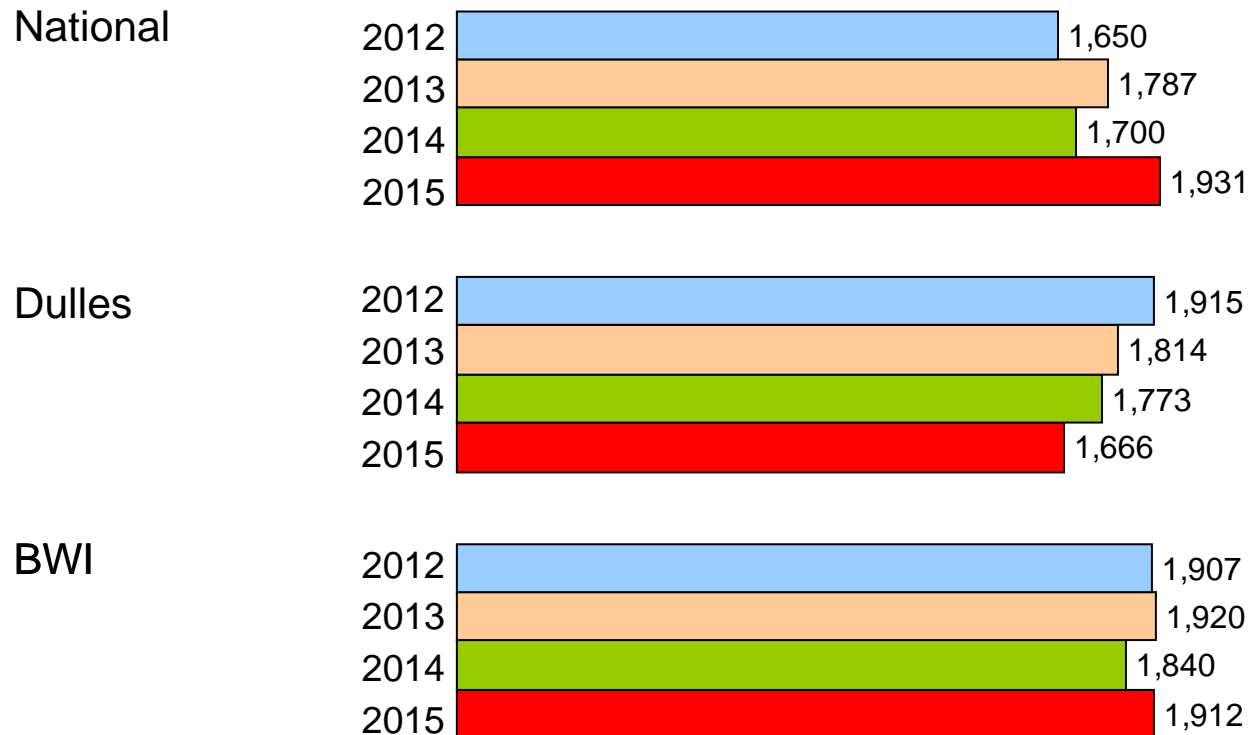
Source: DIIO, May 6, 2015

# Passenger Trends



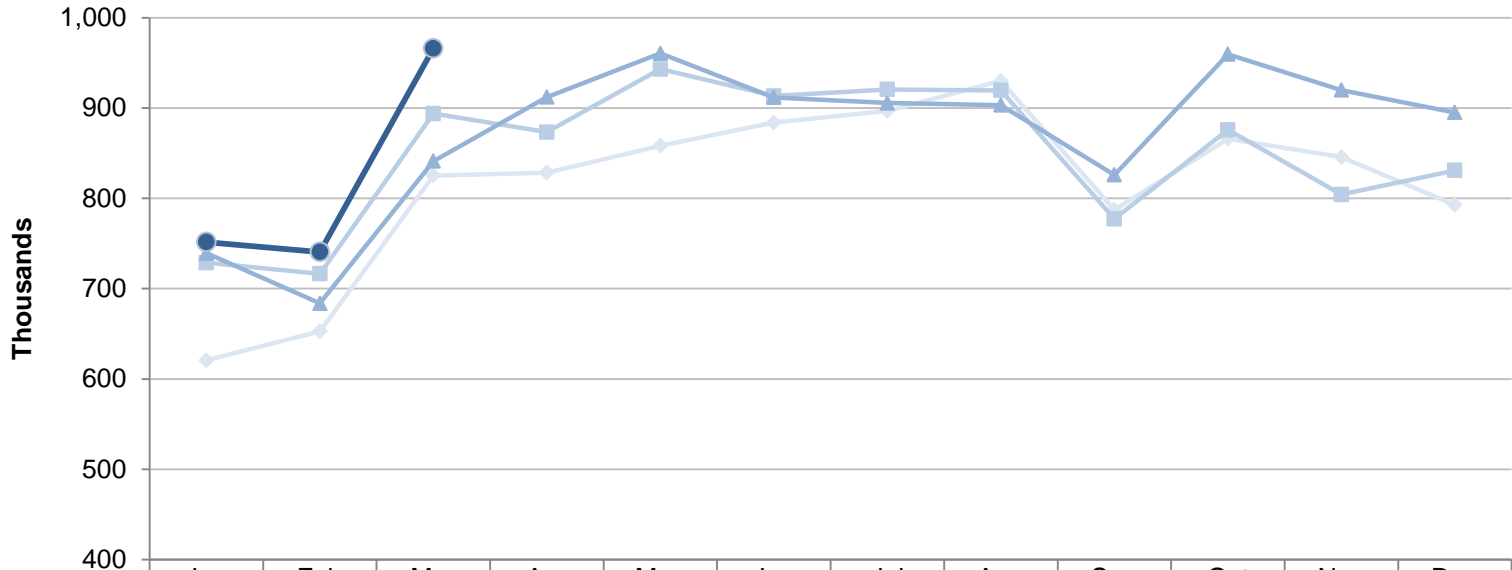
\* System totals may not sum due to rounding.

# Total Passengers Four Year Comparison of the Month of March (Thousands)



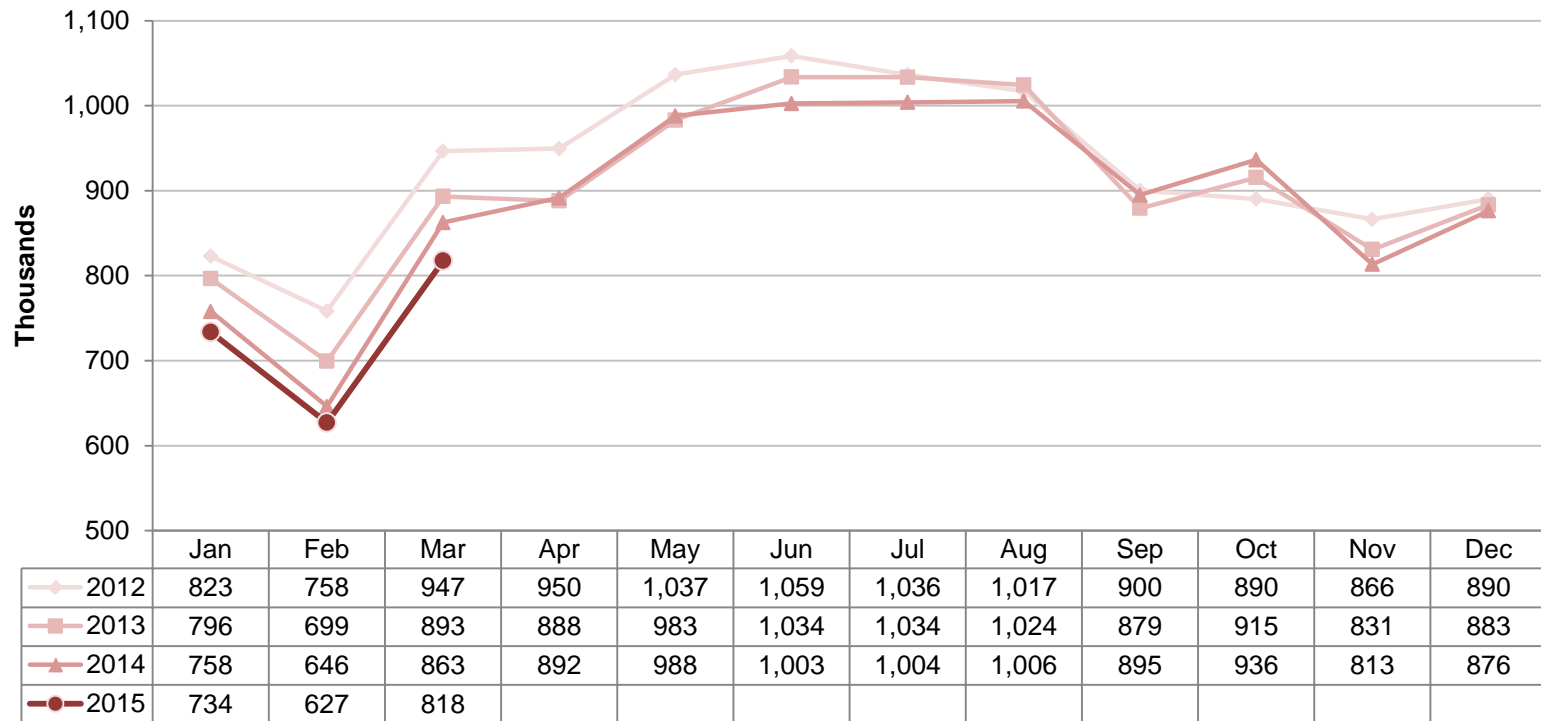


**Ronald Reagan Washington National Airport**  
**Total Commercial Passenger Enplanements**  
**Calendar Years 2012 - 2015**



	Jan	Feb	Mar	Apr	May	Jun	Jul	Aug	Sep	Oct	Nov	Dec
◆ 2012	621	653	825	829	858	884	897	930	787	866	846	793
■ 2013	729	717	894	873	943	913	921	920	777	876	804	831
▲ 2014	739	684	841	912	960	912	906	903	826	960	920	895
● 2015	752	741	966									

**Dulles International Airport**  
**Total Commercial Passenger Enplanements**  
**Calendar Years 2012 - 2015**



**Commercial Passenger Market Share and Percent Change of Top Airlines  
in the Washington and Baltimore Region**

March 2015				March 2014			
<b>National</b>	<b>Top Airlines*</b>	<b>Percent Change</b>	<b>Passengers</b>	<b>Market Share</b>	<b>Top Airlines*</b>	<b>Passengers</b>	<b>Market Share</b>
	1. American + US Airways	-2.4%	983,095	51.0%	1. American + US Airways	1,007,465	59.4%
	2. Delta	12.1%	267,123	13.9%	2. Delta	238,296	14.0%
	3. Southwest + Airtran	149.3%	249,945	13.0%	3. United	150,779	8.9%
	4. JetBlue	57.7%	162,684	8.4%	4. JetBlue	103,177	6.1%
	5. United	-2.2%	147,529	7.7%	5. Southwest + Airtran	100,275	5.9%
	6. Alaska	6.7%	37,581	1.9%	6. Alaska	35,223	2.1%
	7. Frontier	-4.3%	25,927	1.3%	7. Frontier	27,099	1.6%
	8. Virgin America	202.9%	23,304	1.2%	8. Air Canada	19,065	1.1%
	9. Air Canada	10.5%	21,067	1.1%	9. Sun Country	8,033	0.5%
	10. Sun Country	21.8%	9,784	0.5%	10. Virgin America	7,693	0.5%
Total Commercial Passengers	13.6%	<u>1,928,358</u>	100.0%	Total Commercial Passengers	<u>1,697,105</u>	100.0%	
<b>Dulles</b>	<b>Top Airlines*</b>	<b>Percent Change</b>	<b>Passengers</b>	<b>Market Share</b>	<b>Top Airlines*</b>	<b>Passengers</b>	<b>Market Share</b>
	1. United	-13.7%	1,034,234	62.6%	1. United	1,198,290	68.0%
	2. American + US Airways	-6.2%	85,996	5.2%	2. American + US Airways	91,657	5.2%
	3. Delta	5.9%	77,311	4.7%	3. Delta	73,023	4.1%
	4. Frontier	N/A	52,095	3.2%	4. Southwest	46,833	2.7%
	5. Southwest	-4.6%	44,700	2.7%	5. JetBlue	30,834	1.8%
	6. British Airways	0.2%	29,371	1.8%	6. British Airways	29,313	1.7%
	7. Virgin America	-1.6%	28,131	1.7%	7. Virgin America	28,585	1.6%
	8. TACA + Avianca	-7.7%	25,148	1.5%	8. TACA + Avianca	27,247	1.5%
	9. JetBlue	-18.7%	25,077	1.5%	9. Lufthansa	23,671	1.3%
	10. Lufthansa	2.6%	24,291	1.5%	10. Air France	20,732	1.2%
11. All Other Airlines	18.3%	<u>226,025</u>	13.7%	11. All Other Airlines	<u>191,086</u>	10.8%	
Total Commercial Passengers	-6.2%	<u>1,652,379</u>	100.0%	Total Commercial Passengers	<u>1,761,271</u>	100.0%	
<b>Baltimore</b>	<b>Top Airlines*</b>	<b>Percent Change</b>	<b>Passengers</b>	<b>Market Share</b>	<b>Top Airlines*</b>	<b>Passengers</b>	<b>Market Share</b>
	1. Southwest + Airtran	5.2%	1,385,359	72.5%	1. Southwest + Airtran	1,316,305	71.7%
	2. American + US Airways	-5.7%	168,191	8.8%	2. American + US Airways	178,401	9.7%
	3. Delta	-3.3%	164,148	8.6%	3. Delta	169,716	9.2%
	4. United + Continental	-16.3%	70,751	3.7%	4. United + Continental	84,510	4.6%
	5. Spirit	27.3%	48,976	2.6%	5. Spirit	38,473	2.1%
	6. JetBlue	11.2%	25,260	1.3%	6. JetBlue	22,712	1.2%
	7. Alaska	N/A	9,737	0.5%	7. British Airways	8,626	0.5%
8. All Other Airlines	115.8%	<u>37,230</u>	1.9%	8. All Other Airlines	<u>17,253</u>	0.9%	
Total Commercial Passengers	4.0%	<u>1,909,652</u>	100.0%	Total Commercial Passengers	<u>1,835,996</u>	100.0%	

\* Includes affiliated regional carriers

**Commercial Passenger Market Share Summary**

<b>Total Passengers</b>	<b>Mar 2015</b>	<b>Mar 2014</b>	<b>Change</b>
National	35.1%	32.1%	3.1%
Dulles	30.1%	33.3%	-3.2%
Baltimore	34.8%	34.7%	0.1%
<b>Domestic Passengers</b>	<b>Mar 2015</b>	<b>Mar 2014</b>	<b>Change</b>
National	39.1%	35.9%	3.3%
Dulles	23.3%	26.1%	-2.8%
Baltimore	37.6%	38.0%	-0.4%
<b>International Passengers</b>	<b>Mar 2015</b>	<b>Mar 2014</b>	<b>Change</b>
National	5.0%	5.2%	-0.2%
Dulles	81.0%	83.3%	-2.3%
Baltimore	14.0%	11.5%	2.5%

Totals may not sum due to rounding.

**Metropolitan Washington Airports Authority**  
**Ronald Reagan Washington National Airport**  
**Monthly Air Traffic Summary Report**  
**March 2015**

<b>Description</b>	<b>Enplaned</b>	<b>Deplaned</b>	<b>Total</b>	<b>Year Ago</b>	<b>% Change</b>
<b>Aircraft Operations</b>					
Commercial:					
Air Carrier:					
Domestic			12,362	9,885	25.1
International			70	20	250.0
Transborder			0	0	0.0
<b>Total - Air Carrier</b>			<b>12,432</b>	<b>9,905</b>	<b>25.5</b>
Regional:					
Domestic			10,825	12,447	- 13.0
International			25	48	- 47.9
Transborder			581	726	- 20.0
<b>Total - Regional</b>			<b>11,431</b>	<b>13,221</b>	<b>- 13.5</b>
Commercial:					
Domestic			23,187	22,332	3.8
Transborder			676	794	- 14.9
<b>Total - Commercial</b>			<b>23,863</b>	<b>23,126</b>	<b>3.2</b>
Non-Commercial:					
General Aviation			307	277	10.8
Military			292	40	630.0
<b>Total - Non-Commercial</b>			<b>599</b>	<b>317</b>	<b>89.0</b>
<b>Grand Total - Aircraft Operations</b>			<b>24,462</b>	<b>23,443</b>	<b>4.3</b>
<b>Passengers</b>					
Commercial:					
Air Carrier Domestic:					
Scheduled	685,859	687,101	1,372,960	1,096,201	25.2
Chartered	0	0	0	0	0.0
<b>Total - Domestic Air Carrier</b>	<b>685,859</b>	<b>687,101</b>	<b>1,372,960</b>	<b>1,096,201</b>	<b>25.2</b>
Air Carrier International:					
Scheduled	2,849	2,909	5,758	2,591	122.2
Chartered	0	0	0	0	0.0
<b>Total - International Air Carrier</b>	<b>2,849</b>	<b>2,909</b>	<b>5,758</b>	<b>2,591</b>	<b>122.2</b>
Air Carrier Transborder:					
Scheduled	0	0	0	0	0.0
Chartered	0	0	0	0	0.0
<b>Total - Transborder Air Carrier</b>	<b>0</b>	<b>0</b>	<b>0</b>	<b>0</b>	<b>0.0</b>
<b>Total - Air Carrier</b>	<b>688,708</b>	<b>690,010</b>	<b>1,378,718</b>	<b>1,098,792</b>	<b>25.5</b>
Regional:					
Domestic	263,685	259,400	523,085	566,879	- 7.7
International	861	718	1,579	3,091	- 48.9
Transborder	13,108	11,868	24,976	28,343	- 11.9
<b>Total - Regional</b>	<b>277,654</b>	<b>271,986</b>	<b>549,640</b>	<b>598,313</b>	<b>- 8.1</b>
Commercial:					
Domestic	949,544	946,501	1,896,045	1,663,080	14.0
Transborder	16,818	15,495	32,313	34,025	- 5.0
<b>Total - Commercial</b>	<b>966,362</b>	<b>961,996</b>	<b>1,928,358</b>	<b>1,697,105</b>	<b>13.6</b>
Non-Commercial:					
General Aviation	1,122	1,115	2,237	1,868	19.8
Military	294	254	548	677	- 19.1
<b>Total - Non-Commercial</b>	<b>1,416</b>	<b>1,369</b>	<b>2,785</b>	<b>2,545</b>	<b>9.4</b>
<b>Grand Total - Passengers</b>	<b>967,778</b>	<b>963,365</b>	<b>1,931,143</b>	<b>1,699,650</b>	<b>13.6</b>

**Metropolitan Washington Airports Authority  
Ronald Reagan Washington National Airport  
Monthly Air Traffic Summary Report  
March 2015**

<b>Description</b>	<b>Enplaned</b>	<b>Deplaned</b>	<b>Total</b>	<b>Year Ago</b>	<b>% Change</b>
<b>Cargo - Tonnes</b>					
Mail:					
Domestic	15	0	15	30	- 49.1
International	0	0	0	0	100.0
Transborder	0	0	0	0	0.0
<b>Total - Mail:</b>	<b>15</b>	<b>0</b>	<b>15</b>	<b>30</b>	<b>- 49.1</b>
Freight + Express:					
Domestic	137	164	302	177	70.8
International	0	0	0	0	0.0
Transborder	0	0	0	0	- 95.0
<b>Total - Freight + Express:</b>	<b>137</b>	<b>164</b>	<b>302</b>	<b>177</b>	<b>70.7</b>
Mail Plus Freight + Express:					
Domestic	153	164	317	207	53.2
Transborder	0	0	0	0	- 79.0
<b>Grand Total - Cargo</b>	<b>153</b>	<b>164</b>	<b>317</b>	<b>207</b>	<b>53.1</b>

**NOTE:** Figures may not sum to total due to rounding.

**Metropolitan Washington Airports Authority**  
**Ronald Reagan Washington National Airport**  
**Monthly Air Traffic Summary Report**  
**January 2015 - March 2015**

Description	Enplaned	Deplaned	Total	Year Ago	% Change
<b>Aircraft Operations</b>					
Commercial:					
Air Carrier:					
Domestic			34,762	28,010	24.1
International			188	38	394.7
Transborder			0	0	0.0
<b>Total - Air Carrier</b>			<b>34,950</b>	<b>28,048</b>	<b>24.6</b>
Regional:					
Domestic			31,191	35,464	- 12.0
International			63	88	- 28.4
Transborder			1,756	2,088	- 15.9
<b>Total - Regional</b>			<b>33,010</b>	<b>37,640</b>	<b>- 12.3</b>
Commercial:					
Domestic			65,953	63,474	3.9
Transborder			2,007	2,214	- 9.3
<b>Total - Commercial</b>			<b>67,960</b>	<b>65,688</b>	<b>3.5</b>
Non-Commercial:					
General Aviation			730	1,218	- 40.1
Military			785	343	128.9
<b>Total - Non-Commercial</b>			<b>1,515</b>	<b>1,561</b>	<b>- 2.9</b>
<b>Grand Total - Aircraft Operations</b>			<b>69,475</b>	<b>67,249</b>	<b>3.3</b>
<b>Passengers</b>					
Commercial:					
Air Carrier Domestic:					
Scheduled	1,731,382	1,754,385	3,485,767	2,959,811	17.8
Chartered	0	0	0	0	0.0
<b>Total - Domestic Air Carrier</b>	<b>1,731,382</b>	<b>1,754,385</b>	<b>3,485,767</b>	<b>2,959,811</b>	<b>17.8</b>
Air Carrier International:					
Scheduled	6,507	6,659	13,166	4,458	195.3
Chartered	0	0	0	0	0.0
<b>Total - International Air Carrier</b>	<b>6,507</b>	<b>6,659</b>	<b>13,166</b>	<b>4,458</b>	<b>195.3</b>
Air Carrier Transborder:					
Scheduled	0	0	0	0	0.0
Chartered	0	0	0	0	0.0
<b>Total - Transborder Air Carrier</b>	<b>0</b>	<b>0</b>	<b>0</b>	<b>0</b>	<b>0.0</b>
<b>Total - Air Carrier</b>	<b>1,737,889</b>	<b>1,761,044</b>	<b>3,498,933</b>	<b>2,964,269</b>	<b>18.0</b>
Regional:					
Domestic	684,087	695,475	1,379,562	1,520,506	- 9.3
International	1,706	1,734	3,440	5,435	- 36.7
Transborder	34,994	34,201	69,195	75,496	- 8.3
<b>Total - Regional</b>	<b>720,787</b>	<b>731,410</b>	<b>1,452,197</b>	<b>1,601,437</b>	<b>- 9.3</b>
Commercial:					
Domestic	2,415,469	2,449,860	4,865,329	4,480,317	8.6
Transborder	43,207	42,594	85,801	85,389	0.5
<b>Total - Commercial</b>	<b>2,458,676</b>	<b>2,492,454</b>	<b>4,951,130</b>	<b>4,565,706</b>	<b>8.4</b>
Non-Commercial:					
General Aviation	2,274	2,237	4,511	4,300	4.9
Military	959	911	1,870	2,117	- 11.7
<b>Total - Non-Commercial</b>	<b>3,233</b>	<b>3,148</b>	<b>6,381</b>	<b>6,417</b>	<b>- 0.6</b>
<b>Grand Total - Passengers</b>	<b>2,461,909</b>	<b>2,495,602</b>	<b>4,957,511</b>	<b>4,572,123</b>	<b>8.4</b>

**Metropolitan Washington Airports Authority**  
**Ronald Reagan Washington National Airport**  
**Monthly Air Traffic Summary Report**  
**January 2015 - March 2015**

<b>Description</b>	<b>Enplaned</b>	<b>Deplaned</b>	<b>Total</b>	<b>Year Ago</b>	<b>% Change</b>
<b>Cargo - Tonnes</b>					
Mail:					
Domestic	59	0	59	65	- 9.0
International	0	0	0	0	100.0
Transborder	0	0	0	0	0.0
<b>Total - Mail:</b>	<b>59</b>	<b>0</b>	<b>59</b>	<b>65</b>	<b>- 9.0</b>
Freight + Express:					
Domestic	414	281	696	443	56.9
International	0	0	0	0	0.0
Transborder	0	0	0	0	- 94.8
<b>Total - Freight + Express:</b>	<b>414</b>	<b>281</b>	<b>696</b>	<b>443</b>	<b>56.8</b>
Mail Plus Freight + Express:					
Domestic	473	281	754	508	48.5
Transborder	0	0	0	0	- 90.8
<b>Grand Total - Cargo</b>	<b>473</b>	<b>281</b>	<b>754</b>	<b>508</b>	<b>48.5</b>

**NOTE:** Figures may not sum to total due to rounding.

**Metropolitan Washington Airports Authority**  
**Ronald Reagan Washington National Airport**  
**Monthly Air Traffic Summary Report**  
**April 2014 - March 2015**

Description	Enplaned	Deplaned	Total	Year Ago	% Change
<b>Aircraft Operations</b>					
Commercial:					
Air Carrier:					
Domestic			133,308	120,741	10.4
International			844	334	152.7
Transborder			0	492	- 100.0
<b>Total - Air Carrier</b>			<b>134,152</b>	<b>121,567</b>	<b>10.4</b>
Regional:					
Domestic			136,959	150,868	- 9.2
International			137	393	- 65.1
Transborder			7,617	8,190	- 7.0
<b>Total - Regional</b>			<b>144,713</b>	<b>159,451</b>	<b>- 9.2</b>
Commercial:					
Domestic			270,267	271,609	- 0.5
Transborder			8,598	9,409	- 8.6
<b>Total - Commercial</b>			<b>278,865</b>	<b>281,018</b>	<b>- 0.8</b>
Non-Commercial:					
General Aviation			3,252	4,688	- 30.6
Military			3,289	2,446	34.5
<b>Total - Non-Commercial</b>			<b>6,541</b>	<b>7,134</b>	<b>- 8.3</b>
<b>Grand Total - Aircraft Operations</b>			<b>285,406</b>	<b>288,152</b>	<b>- 1.0</b>
<b>Passengers</b>					
Commercial:					
Air Carrier Domestic:					
Scheduled	7,264,831	7,120,305	14,385,136	13,256,474	8.5
Chartered	0	0	0	0	0.0
<b>Total - Domestic Air Carrier</b>	<b>7,264,831</b>	<b>7,120,305</b>	<b>14,385,136</b>	<b>13,256,474</b>	<b>8.5</b>
Air Carrier International:					
Scheduled	33,107	32,435	65,542	30,670	113.7
Chartered	0	0	0	0	0.0
<b>Total - International Air Carrier</b>	<b>33,107</b>	<b>32,435</b>	<b>65,542</b>	<b>30,670</b>	<b>113.7</b>
Air Carrier Transborder:					
Scheduled	0	0	0	25,976	- 100.0
Chartered	0	0	0	0	0.0
<b>Total - Transborder Air Carrier</b>	<b>0</b>	<b>0</b>	<b>0</b>	<b>25,976</b>	<b>- 100.0</b>
<b>Total - Air Carrier</b>	<b>7,297,938</b>	<b>7,152,740</b>	<b>14,450,678</b>	<b>13,313,120</b>	<b>8.5</b>
Regional:					
Domestic	3,188,002	3,201,332	6,389,334	6,602,355	- 3.2
International	3,878	3,770	7,648	24,103	- 68.3
Transborder	162,800	159,348	322,148	314,253	2.5
<b>Total - Regional</b>	<b>3,354,680</b>	<b>3,364,450</b>	<b>6,719,130</b>	<b>6,940,711</b>	<b>- 3.2</b>
Commercial:					
Domestic	10,452,833	10,321,637	20,774,470	19,858,829	4.6
Transborder	199,785	195,553	395,338	395,002	0.1
<b>Total - Commercial</b>	<b>10,652,618</b>	<b>10,517,190</b>	<b>21,169,808</b>	<b>20,253,831</b>	<b>4.5</b>
Non-Commercial:					
General Aviation	9,657	9,445	19,102	16,289	17.3
Military	3,476	3,389	6,865	7,651	- 10.3
<b>Total - Non-Commercial</b>	<b>13,133</b>	<b>12,834</b>	<b>25,967</b>	<b>23,940</b>	<b>8.5</b>
<b>Grand Total - Passengers</b>	<b>10,665,751</b>	<b>10,530,024</b>	<b>21,195,775</b>	<b>20,277,771</b>	<b>4.5</b>



**Metropolitan Washington Airports Authority  
Ronald Reagan Washington National Airport  
Monthly Air Traffic Summary Report  
April 2014 - March 2015**

<b>Description</b>	<b>Enplaned</b>	<b>Deplaned</b>	<b>Total</b>	<b>Year Ago</b>	<b>% Change</b>
<b>Cargo - Tonnes</b>					
Mail:					
Domestic	313	20	332	120	176.8
International	0	0	0	0	100.0
Transborder	0	0	0	0	0.0
<b>Total - Mail:</b>	<b>313</b>	<b>20</b>	<b>332</b>	<b>120</b>	<b>176.8</b>
Freight + Express:					
Domestic	1,179	855	2,034	1,839	10.6
International	0	0	0	0	- 100.0
Transborder	1	0	1	2	- 51.0
<b>Total - Freight + Express:</b>	<b>1,179</b>	<b>856</b>	<b>2,035</b>	<b>1,841</b>	<b>10.5</b>
Mail Plus Freight + Express:					
Domestic	1,492	875	2,367	1,959	20.8
Transborder	1	0	1	2	- 53.6
<b>Grand Total - Cargo</b>	<b>1,492</b>	<b>875</b>	<b>2,367</b>	<b>1,961</b>	<b>20.7</b>

**NOTE:** Figures may not sum to total due to rounding.

**Metropolitan Washington Airports Authority**  
**Washington Dulles International Airport**  
**Monthly Air Traffic Summary Report**  
**March 2015**

Description	Enplaned	Deplaned	Total	Year Ago	% Change
<b>Aircraft Operations</b>					
Commercial:					
Air Carrier:					
Domestic			6,213	5,765	7.8
International			2,862	3,102	- 7.7
Transborder			0	0	0.0
<b>Total - Air Carrier</b>			<b>9,075</b>	<b>8,867</b>	<b>2.3</b>
Regional:					
Domestic			9,213	11,541	- 20.2
International			351	37	848.6
Transborder			132	703	- 81.2
<b>Total - Regional</b>			<b>9,696</b>	<b>12,281</b>	<b>- 21.0</b>
Commercial:					
Domestic			15,426	17,306	- 10.9
International			3,345	3,842	- 12.9
<b>Total - Commercial</b>			<b>18,771</b>	<b>21,148</b>	<b>- 11.2</b>
Non-Commercial:					
General Aviation			3,349	3,134	6.9
Military			45	20	125.0
<b>Total - Non-Commercial</b>			<b>3,394</b>	<b>3,154</b>	<b>7.6</b>
<b>Grand Total - Aircraft Operations</b>			<b>22,165</b>	<b>24,302</b>	<b>- 8.8</b>
<b>Passengers</b>					
Commercial:					
Air Carrier Domestic:					
Scheduled	347,489	353,928	701,417	716,005	- 2.0
Chartered	371	216	587	439	33.7
<b>Total - Domestic Air Carrier</b>	<b>347,860</b>	<b>354,144</b>	<b>702,004</b>	<b>716,444</b>	<b>- 2.0</b>
Air Carrier International:					
Scheduled	243,099	260,195	503,294	515,673	- 2.4
Chartered	479	435	914	1,048	- 12.8
<b>Total - International Air Carrier</b>	<b>243,578</b>	<b>260,630</b>	<b>504,208</b>	<b>516,721</b>	<b>- 2.4</b>
Air Carrier Transborder:					
Scheduled	0	0	0	0	0.0
Chartered	0	0	0	0	0.0
<b>Total - Transborder Air Carrier</b>	<b>0</b>	<b>0</b>	<b>0</b>	<b>0</b>	<b>0.0</b>
<b>Total - Air Carrier</b>	<b>591,438</b>	<b>614,774</b>	<b>1,206,212</b>	<b>1,233,165</b>	<b>- 2.2</b>
Regional:					
Domestic	216,241	209,961	426,202	495,098	- 13.9
International	7,000	7,401	14,401	2,032	608.7
Transborder	2,930	2,634	5,564	30,976	- 82.0
<b>Total - Regional</b>	<b>226,171</b>	<b>219,996</b>	<b>446,167</b>	<b>528,106</b>	<b>- 15.5</b>
Commercial:					
Domestic	564,101	564,105	1,128,206	1,211,542	- 6.9
International	253,508	270,665	524,173	549,729	- 4.6
<b>Total - Commercial</b>	<b>817,609</b>	<b>834,770</b>	<b>1,652,379</b>	<b>1,761,271</b>	<b>- 6.2</b>
Non-Commercial:					
General Aviation	6,955	6,652	13,607	12,027	13.1
Military	41	41	82	0	100.0
<b>Total - Non-Commercial</b>	<b>6,996</b>	<b>6,693</b>	<b>13,689</b>	<b>12,027</b>	<b>13.8</b>
<b>Grand Total - Passengers</b>	<b>824,605</b>	<b>841,463</b>	<b>1,666,068</b>	<b>1,773,298</b>	<b>- 6.0</b>

**Metropolitan Washington Airports Authority**  
**Washington Dulles International Airport**  
**Monthly Air Traffic Summary Report**  
**March 2015**

<b>Description</b>	<b>Enplaned</b>	<b>Deplaned</b>	<b>Total</b>	<b>Year Ago</b>	<b>% Change</b>
<b>Cargo - Tonnes</b>					
Mail:					
Domestic	232	337	569	573	- 0.8
International	144	183	326	246	32.7
<b>Total - Mail:</b>	<b>375</b>	<b>519</b>	<b>895</b>	<b>819</b>	<b>9.2</b>
Freight + Express:					
Domestic	3,644	2,944	6,588	6,560	0.4
International	5,964	9,785	15,749	16,322	- 3.5
<b>Total - Freight + Express:</b>	<b>9,608</b>	<b>12,729</b>	<b>22,337</b>	<b>22,881</b>	<b>- 2.4</b>
Mail Plus Freight + Express:					
Domestic	3,876	3,280	7,156	7,133	0.3
International	6,107	9,968	16,075	16,567	- 3.0
<b>Grand Total - Cargo</b>	<b>9,983</b>	<b>13,248</b>	<b>23,231</b>	<b>23,701</b>	<b>- 2.0</b>

**NOTE:** Figures may not sum to total due to rounding.

**Metropolitan Washington Airports Authority**  
**Washington Dulles International Airport**  
**Monthly Air Traffic Summary Report**  
**January 2015 - March 2015**

Description	Enplaned	Deplaned	Total	Year Ago	% Change
<b>Aircraft Operations</b>					
Commercial:					
Air Carrier:					
Domestic			17,136	15,707	9.1
International			7,937	8,367	- 5.1
Transborder			0	0	0.0
<b>Total - Air Carrier</b>			<b>25,073</b>	<b>24,074</b>	<b>4.1</b>
Regional:					
Domestic			26,343	31,551	- 16.5
International			660	155	325.8
Transborder			568	1,862	- 69.5
<b>Total - Regional</b>			<b>27,571</b>	<b>33,568</b>	<b>- 17.9</b>
Commercial:					
Domestic			43,479	47,258	- 8.0
International			9,165	10,384	- 11.7
<b>Total - Commercial</b>			<b>52,644</b>	<b>57,642</b>	<b>- 8.7</b>
Non-Commercial:					
General Aviation			8,645	8,994	- 3.9
Military			107	83	28.9
<b>Total - Non-Commercial</b>			<b>8,752</b>	<b>9,077</b>	<b>- 3.6</b>
<b>Grand Total - Aircraft Operations</b>			<b>61,396</b>	<b>66,719</b>	<b>- 8.0</b>
<b>Passengers</b>					
Commercial:					
Air Carrier Domestic:					
Scheduled	909,863	924,520	1,834,383	1,860,586	- 1.4
Chartered	1,635	410	2,045	1,160	76.3
<b>Total - Domestic Air Carrier</b>	<b>911,498</b>	<b>924,930</b>	<b>1,836,428</b>	<b>1,861,746</b>	<b>- 1.4</b>
Air Carrier International:					
Scheduled	656,118	695,670	1,351,788	1,382,669	- 2.2
Chartered	1,434	1,269	2,703	2,901	- 6.8
<b>Total - International Air Carrier</b>	<b>657,552</b>	<b>696,939</b>	<b>1,354,491</b>	<b>1,385,570</b>	<b>- 2.2</b>
Air Carrier Transborder:					
Scheduled	0	0	0	0	0.0
Chartered	0	0	0	0	0.0
<b>Total - Transborder Air Carrier</b>	<b>0</b>	<b>0</b>	<b>0</b>	<b>0</b>	<b>0.0</b>
<b>Total - Air Carrier</b>	<b>1,569,050</b>	<b>1,621,869</b>	<b>3,190,919</b>	<b>3,247,316</b>	<b>- 1.7</b>
Regional:					
Domestic	586,356	577,182	1,163,538	1,248,846	- 6.8
International	12,117	14,954	27,071	7,080	282.4
Transborder	10,727	10,883	21,610	85,279	- 74.7
<b>Total - Regional</b>	<b>609,200</b>	<b>603,019</b>	<b>1,212,219</b>	<b>1,341,205</b>	<b>- 9.6</b>
Commercial:					
Domestic	1,497,854	1,502,112	2,999,966	3,110,592	- 3.6
International	680,396	722,776	1,403,172	1,477,929	- 5.1
<b>Total - Commercial</b>	<b>2,178,250</b>	<b>2,224,888</b>	<b>4,403,138</b>	<b>4,588,521</b>	<b>- 4.0</b>
Non-Commercial:					
General Aviation	17,806	16,831	34,637	33,459	3.5
Military	123	89	212	153	38.6
<b>Total - Non-Commercial</b>	<b>17,929</b>	<b>16,920</b>	<b>34,849</b>	<b>33,612</b>	<b>3.7</b>
<b>Grand Total - Passengers</b>	<b>2,196,179</b>	<b>2,241,808</b>	<b>4,437,987</b>	<b>4,622,133</b>	<b>- 4.0</b>

**Metropolitan Washington Airports Authority**  
**Washington Dulles International Airport**  
**Monthly Air Traffic Summary Report**  
**January 2015 - March 2015**

<b>Description</b>	<b>Enplaned</b>	<b>Deplaned</b>	<b>Total</b>	<b>Year Ago</b>	<b>% Change</b>
<b>Cargo - Tonnes</b>					
Mail:					
Domestic	692	952	1,644	1,773	- 7.3
International	372	422	795	803	- 1.0
<b>Total - Mail:</b>	<b>1,064</b>	<b>1,375</b>	<b>2,439</b>	<b>2,576</b>	<b>- 5.3</b>
Freight + Express:					
Domestic	10,538	8,629	19,166	18,770	2.1
International	16,037	27,150	43,188	42,945	0.6
<b>Total - Freight + Express:</b>	<b>26,575</b>	<b>35,779</b>	<b>62,354</b>	<b>61,715</b>	<b>1.0</b>
Mail Plus Freight + Express:					
Domestic	11,230	9,581	20,811	20,543	1.3
International	16,409	27,573	43,982	43,747	0.5
<b>Grand Total - Cargo</b>	<b>27,639</b>	<b>37,154</b>	<b>64,793</b>	<b>64,291</b>	<b>0.8</b>

**NOTE:** Figures may not sum to total due to rounding.

**Metropolitan Washington Airports Authority**  
**Washington Dulles International Airport**  
**Monthly Air Traffic Summary Report**  
**April 2014 - March 2015**

<b>Description</b>	<b>Enplaned</b>	<b>Deplaned</b>	<b>Total</b>	<b>Year Ago</b>	<b>% Change</b>
<b>Aircraft Operations</b>					
Commercial:					
Air Carrier:					
Domestic			72,979	72,651	0.5
International			35,497	35,971	- 1.3
Transborder			0	6	- 100.0
<b>Total - Air Carrier</b>			<b>108,476</b>	<b>108,628</b>	<b>- 0.1</b>
Regional:					
Domestic			128,839	142,517	- 9.6
International			865	258	235.3
Transborder			6,699	10,075	- 33.5
<b>Total - Regional</b>			<b>136,403</b>	<b>152,850</b>	<b>- 10.8</b>
Commercial:					
Domestic			201,818	215,168	- 6.2
International			43,061	46,310	- 7.0
<b>Total - Commercial</b>			<b>244,879</b>	<b>261,478</b>	<b>- 6.3</b>
Non-Commercial:					
General Aviation			38,616	40,449	- 4.5
Military			564	879	- 35.8
<b>Total - Non-Commercial</b>			<b>39,180</b>	<b>41,328</b>	<b>- 5.2</b>
<b>Grand Total - Aircraft Operations</b>			<b>284,059</b>	<b>302,806</b>	<b>- 6.2</b>
<b>Passengers</b>					
Commercial:					
Air Carrier Domestic:					
Scheduled	4,296,466	4,357,313	8,653,779	8,776,180	- 1.4
Chartered	7,832	6,419	14,251	15,926	- 10.5
<b>Total - Domestic Air Carrier</b>	<b>4,304,298</b>	<b>4,363,732</b>	<b>8,668,030</b>	<b>8,792,106</b>	<b>- 1.4</b>
Air Carrier International:					
Scheduled	3,317,442	3,350,617	6,668,059	6,533,605	2.1
Chartered	5,221	5,224	10,445	11,174	- 6.5
<b>Total - International Air Carrier</b>	<b>3,322,663</b>	<b>3,355,841</b>	<b>6,678,504</b>	<b>6,544,779</b>	<b>2.0</b>
Air Carrier Transborder:					
Scheduled	0	0	0	0	0.0
Chartered	0	0	0	557	- 100.0
<b>Total - Transborder Air Carrier</b>	<b>0</b>	<b>0</b>	<b>0</b>	<b>557</b>	<b>- 100.0</b>
<b>Total - Air Carrier</b>	<b>7,626,961</b>	<b>7,719,573</b>	<b>15,346,534</b>	<b>15,337,442</b>	<b>0.1</b>
Regional:					
Domestic	2,797,785	2,748,977	5,546,762	5,786,109	- 4.1
International	21,048	22,510	43,558	11,856	267.4
Transborder	145,270	152,878	298,148	435,441	- 31.5
<b>Total - Regional</b>	<b>2,964,103</b>	<b>2,924,365</b>	<b>5,888,468</b>	<b>6,233,406</b>	<b>- 5.5</b>
Commercial:					
Domestic	7,102,083	7,112,709	14,214,792	14,578,215	- 2.5
International	3,488,981	3,531,229	7,020,210	6,992,633	0.4
<b>Total - Commercial</b>	<b>10,591,064</b>	<b>10,643,938</b>	<b>21,235,002</b>	<b>21,570,848</b>	<b>- 1.6</b>
Non-Commercial:					
General Aviation	78,155	74,280	152,435	148,573	2.6
Military	334	316	650	1,104	- 41.1
<b>Total - Non-Commercial</b>	<b>78,489</b>	<b>74,596</b>	<b>153,085</b>	<b>149,677</b>	<b>2.3</b>
<b>Grand Total - Passengers</b>	<b>10,669,553</b>	<b>10,718,534</b>	<b>21,388,087</b>	<b>21,720,525</b>	<b>- 1.5</b>

**Metropolitan Washington Airports Authority**  
**Washington Dulles International Airport**  
**Monthly Air Traffic Summary Report**  
**April 2014 - March 2015**

<b>Description</b>	<b>Enplaned</b>	<b>Deplaned</b>	<b>Total</b>	<b>Year Ago</b>	<b>% Change</b>
<b>Cargo - Tonnes</b>					
Mail:					
Domestic	2,700	4,333	7,033	6,460	8.9
International	2,830	1,395	4,225	10,439	- 59.5
<b>Total - Mail:</b>	<b>5,530</b>	<b>5,729</b>	<b>11,258</b>	<b>16,900</b>	<b>- 33.4</b>
Freight + Express:					
Domestic	44,803	37,565	82,367	82,455	- 0.1
International	63,735	110,895	174,630	155,997	11.9
<b>Total - Freight + Express:</b>	<b>108,538</b>	<b>148,460</b>	<b>256,997</b>	<b>238,453</b>	<b>7.8</b>
Mail Plus Freight + Express:					
Domestic	47,502	41,898	89,400	88,916	0.5
International	66,565	112,290	178,855	166,437	7.5
<b>Grand Total - Cargo</b>	<b>114,067</b>	<b>154,188</b>	<b>268,256</b>	<b>255,352</b>	<b>5.1</b>

**NOTE:** Figures may not sum to total due to rounding.