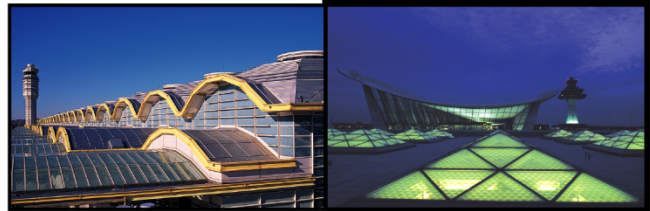


August  
2014

# air traffic statistics

---



METROPOLITAN WASHINGTON AIRPORTS AUTHORITY

# **Metropolitan Washington Airports Authority**

## **Air Traffic Statistics**

### **Table of Contents**

#### Summary

Air Traffic Summary .....	1
SH&E Air Traffic Schedule Activity.....	3
Passenger Trends.....	5
Total Passengers 4-Year Comparison - DCA, IAD, BWI.....	6
Total Commercial Passenger Enplanements.....	7
Market Share and Percentage of Top Airlines - DCA, IAD, BWI.....	9

#### Air Traffic Statistics - DCA

Monthly Air Traffic Summary – Current Month .....	10
Monthly Air Traffic Summary – Year-to-Date .....	12
Monthly Air Traffic Summary – Last 12 Months .....	14

#### Air Traffic Statistics - IAD

Monthly Air Traffic Summary – Current Month .....	16
Monthly Air Traffic Summary – Year-to-Date .....	18
Monthly Air Traffic Summary – Last 12 Months .....	20

## Air Traffic Summary August 2014

		Passenger Activity (in Millions)								
		Current Month			Year-to-Date			Last 12 Months		
		DCA	IAD	System	DCA	IAD	System	DCA	IAD	System
Total	Passengers	1.8	2.1	3.9	13.8	14.5	28.3	20.3	21.6	41.9
	% Change	(0.8%)	(1.6%)	(1.2%)	(0.6%)	(2.6%)	(1.6%)	(0.6%)	(2.1%)	(1.4%)
Commercial	Dom									
	Passengers	1.8	1.3	3.1	13.5	9.5	23.0	19.9	14.3	34.2
	% Change	(0.7%)	(5.4%)	(2.8%)	(0.6%)	(5.4%)	(2.6%)	(0.5%)	(4.6%)	(2.3%)
	Int'l									
	Passengers	< 0.1	0.8	0.8	0.3	4.9	5.2	0.4	7.1	7.5
	% Change	(1.9%)	5.4%	5.0%	(2.8%)	3.2%	2.8%	(4.8%)	3.3%	2.8%

Note: System totals may not sum due to rounding.

U.S. industry average passenger enplanements as reported by Airlines for America (A4A):

Enplanements	Current Month	Year-to-Date
System	2.8%	2.4%
Domestic	2.5%	2.1%
International	4.3%	3.9%

### Ronald Reagan Washington National Airport

- Domestic commercial passenger activity decreased 0.7% in August 2014. Significant activity by carrier follows:

Airline	Comments
American + US Airways	<ul style="list-style-type: none"> <li>9.3% decrease in passenger activity</li> <li>Increased service to Boston in March 2014 and Hartford, Los Angeles, and St. Louis in June 2014</li> <li>Resumed service to Bermuda, Martha's Vineyard, and Nantucket in June 2014</li> <li>Reduced service to Buffalo, Norfolk, and Pittsburgh in January 2014; Albany, Charleston (WV), Des Moines, Manchester (NH), Memphis, Nashville, and Raleigh in June 2014; and Burlington and Detroit in July 2014</li> <li>In accordance with the planned route divestitures as a result of the merger, service to Augusta (GA), Fayetteville, Jacksonville (NC), Little Rock, Omaha, and San Diego was discontinued in June 2014; and Long Island (NY), Minneapolis and Tallahassee in July 2014. Service was reduced to Fort Myers, Fort Walton Beach, Pensacola and Wilmington (NC) in June 2014; and Savannah and Myrtle Beach in July 2014</li> </ul>
JetBlue	<ul style="list-style-type: none"> <li>30.5% increase in passenger activity</li> <li>New service to Charleston (SC) and Hartford in June 2014</li> <li>Increased service to Tampa in July 2014</li> </ul>
Southwest + AirTran	<ul style="list-style-type: none"> <li>65.3% increase in passenger activity</li> <li>New service to Kansas City in March 2014, Chicago-Midway, Nashville and New Orleans in August 2014</li> <li>Discontinued service to Orlando in September 2013</li> </ul>

- Transborder passenger traffic declined 1.9% in August as American + US Airways reduced service to Bermuda.
- The combined American + US Airways, including its regional affiliates, had the largest commercial passenger market share with 54.4%, a decrease compared to 59.9% in August 2013.

## Washington Dulles International Airport

### Domestic Passenger Activity

- Domestic commercial passenger activity declined 5.4% in August 2014. Significant activity by carrier follows:

Airline	Comments
United	<ul style="list-style-type: none"><li>5.4% decrease in passenger activity</li><li>Discontinued service to Salt Lake City in December 2013, Albuquerque in April 2014, Ft. Lauderdale in May 2014, and Binghamton in June 2014</li><li>Added Saint Thomas (VI) in November 2013 and Clarksburg in June 2014 as new destinations</li></ul>
Delta	<ul style="list-style-type: none"><li>12.4% decline in passenger activity</li><li>Discontinued service to New York La Guardia in January 2014</li><li>Reduced service to Atlanta in September 2013 and Minneapolis in January 2014</li></ul>

### International Passenger Activity

- August 2014 international commercial passenger traffic increased 5.4%. Significant activity by carrier follows:

Airline	Comments
United	<ul style="list-style-type: none"><li>0.5% increase in passenger activity</li><li>Discontinued service to San Salvador in April 2014</li><li>Reduced service to Kuwait in October 2013, and London and Montreal in November 2013</li><li>Increased service to Cancun, Guatemala City, and San Jose (Costa Rica) in March 2014, and Aruba, Montego Bay, Punta Cana, and Vancouver in June 2014</li><li>Began service to Madrid and Nassau in June 2014</li><li>Resumed service to Halifax in July 2014</li></ul>
Air China	<ul style="list-style-type: none"><li>New service to Beijing began in June 2014</li></ul>
TACA	<ul style="list-style-type: none"><li>20.7% increase in passenger activity</li><li>Increased service to San Salvador in July 2014</li></ul>
Austrian	<ul style="list-style-type: none"><li>38.9% increase in passenger activity due to aircraft upgauging in July 2014</li></ul>
Ethiopian	<ul style="list-style-type: none"><li>22.7% increase in passenger activity due to aircraft upgauging in June 2014</li></ul>

- United Airlines, including its regional affiliates, had the largest commercial passenger market share of 63.5%, a decrease compared to 65.0% in August 2013.

### Cargo Activity

- For the month of August 2014, total cargo increased 7.8% at Dulles from a year earlier. Domestic cargo increased 1.8% at IAD mainly due to an increase on United (31.3%). FedEx, the largest cargo carrier at DCA, declined 2.0% from August 2013.
- International cargo increased 11.5% due to increases on United (28.3%), KLM (15.7%) and Qatar (12.2%) in August 2014.

## Baltimore-Washington International Airport

- Current month commercial passenger activity vs. August 2013 decreased 0.5%.
- BWI passenger activity outpaced activity at Dulles by 43.4k commercial passengers (2.1%) and National by 270.6k passengers (14.9%).
- Southwest continues to have the largest passenger market share with 70.3%, up from 69.5% in August 2013.
- Cargo activity at BWI totaled 8.8k metric tonnes, a 1.5% decrease from a year earlier. Activity of BWI's largest cargo carrier, FedEx, declined 5.8% from August 2013.

# Ronald Reagan Washington National Airport

Air Traffic Schedule Activity

August 2014 vs. August 2013

August 2014:	Daily Departures	Airlines*	Unduplicated Destinations
<b>Domestic</b>			
<b>Passenger service information -</b>			
Mainline	178	9	--
Regional	<u>192</u>	<u>9</u>	--
Domestic Total	370	18	82
<b>Transborder/International</b>			
<b>Passenger service information -</b>			
Mainline	2	2	--
Regional	<u>10</u>	<u>2</u>	--
Transborder/International Total	12	4	5

August 2013:	Daily Departures	Airlines*	Unduplicated Destinations
<b>Domestic</b>			
<b>Passenger service information -</b>			
Mainline	175	9	--
Regional	<u>219</u>	<u>11</u>	--
Domestic Total	394	20	88
<b>Transborder/International</b>			
<b>Passenger service information -</b>			
Mainline	1	1	--
Regional	<u>13</u>	<u>4</u>	--
Transborder/International Total	14	5	6

\* The following airlines are counted as one airline:  
 Southwest and AirTran  
 American and US Airways  
 Regional carriers flying for multiple mainline carriers

Source: DII/O, September 29, 2014

# Washington Dulles International Airport

Air Traffic Schedule Activity  
August 2014 vs. August 2013

August 2014:	Daily Departures	Airlines*	Unduplicated Destinations
<b>Domestic</b>			
<b>Passenger service information -</b>			
Mainline	99	8	--
Regional	<u>184</u>	<u>12</u>	--
Domestic Total	283	20	80
<b>Transborder/International</b>			
<b>Passenger service information -</b>			
Mainline	53	25	--
Regional	<u>17</u>	<u>6</u>	--
Transborder/International Total	70	31	48

August 2013:	Daily Departures	Airlines	Unduplicated Destinations
<b>Domestic</b>			
<b>Passenger service information -</b>			
Mainline	109	7	--
Regional	<u>201</u>	<u>14</u>	--
Domestic Total	310	21	84
<b>Transborder/International</b>			
<b>Passenger service information -</b>			
Mainline	54	23	--
Regional	<u>15</u>	<u>5</u>	--
Transborder/International Total	69	28	47

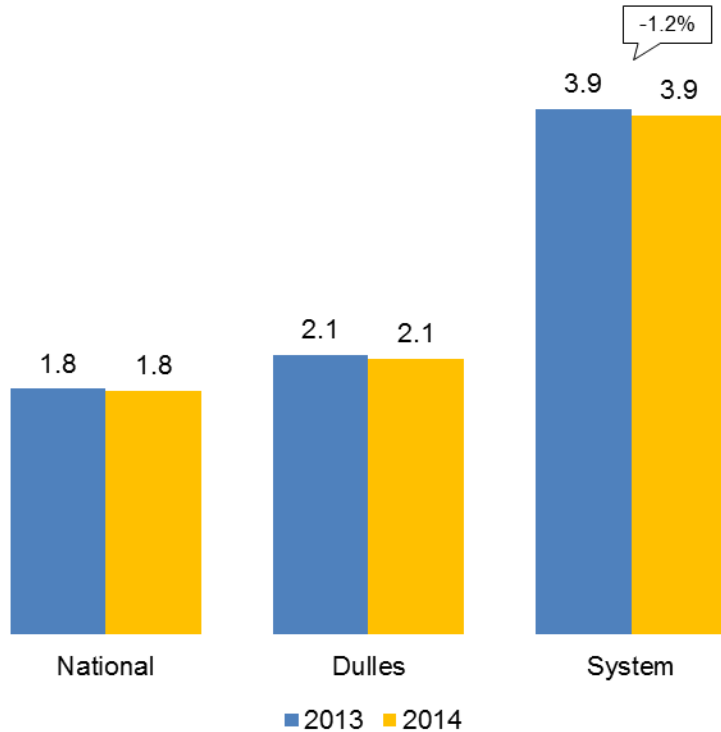
\* The following airlines are counted as one airline:  
Pacific Wings and Sun Air International  
Avianca, TACA, and LACSA  
American Airlines and US Airways  
Austrian and Tyrolean  
Regional carriers flying for multiple mainline carriers

Source: DII/O, September 29, 2014

# Passenger Trends

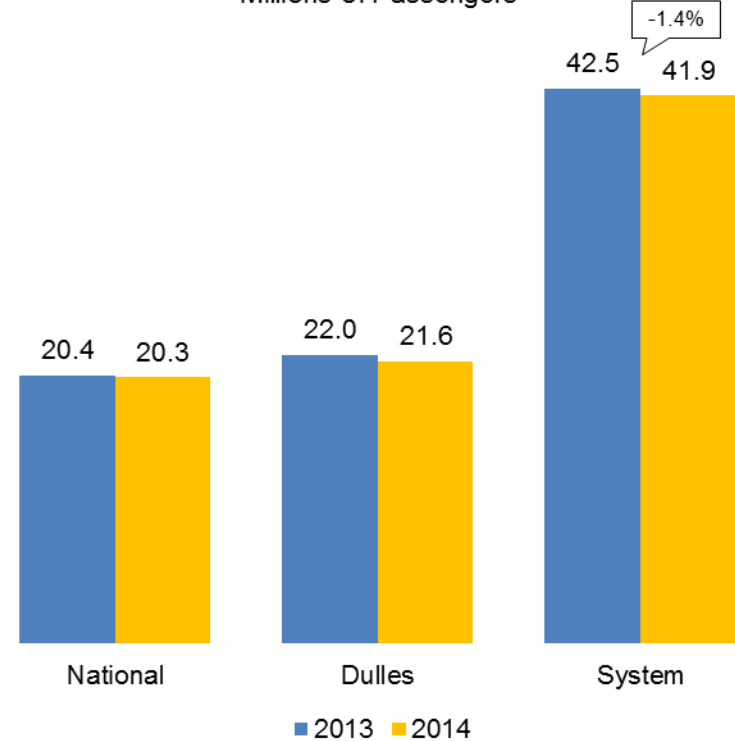
## August 2014 Comparison

Millions of Passengers



## Last 12-Months Comparison

Millions of Passengers

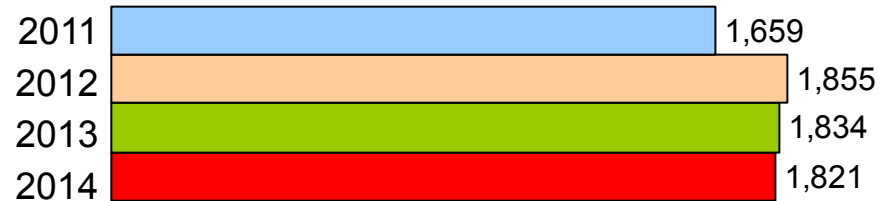


\* System totals may not sum due to rounding.

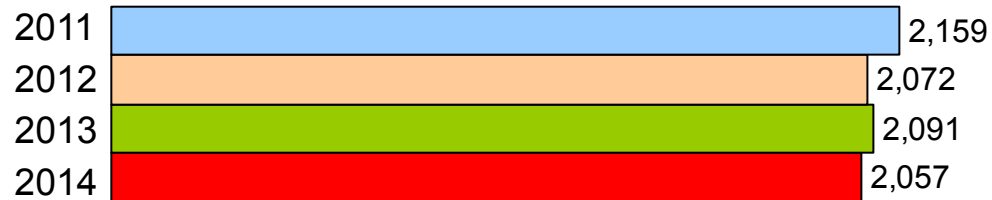
# Total Passengers

## Four Year Comparison of the Month of August (Thousands)

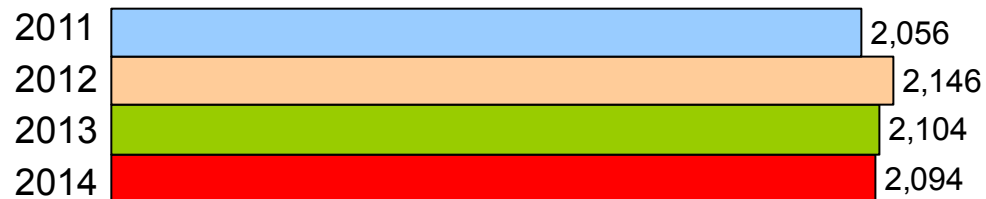
### National



### Dulles

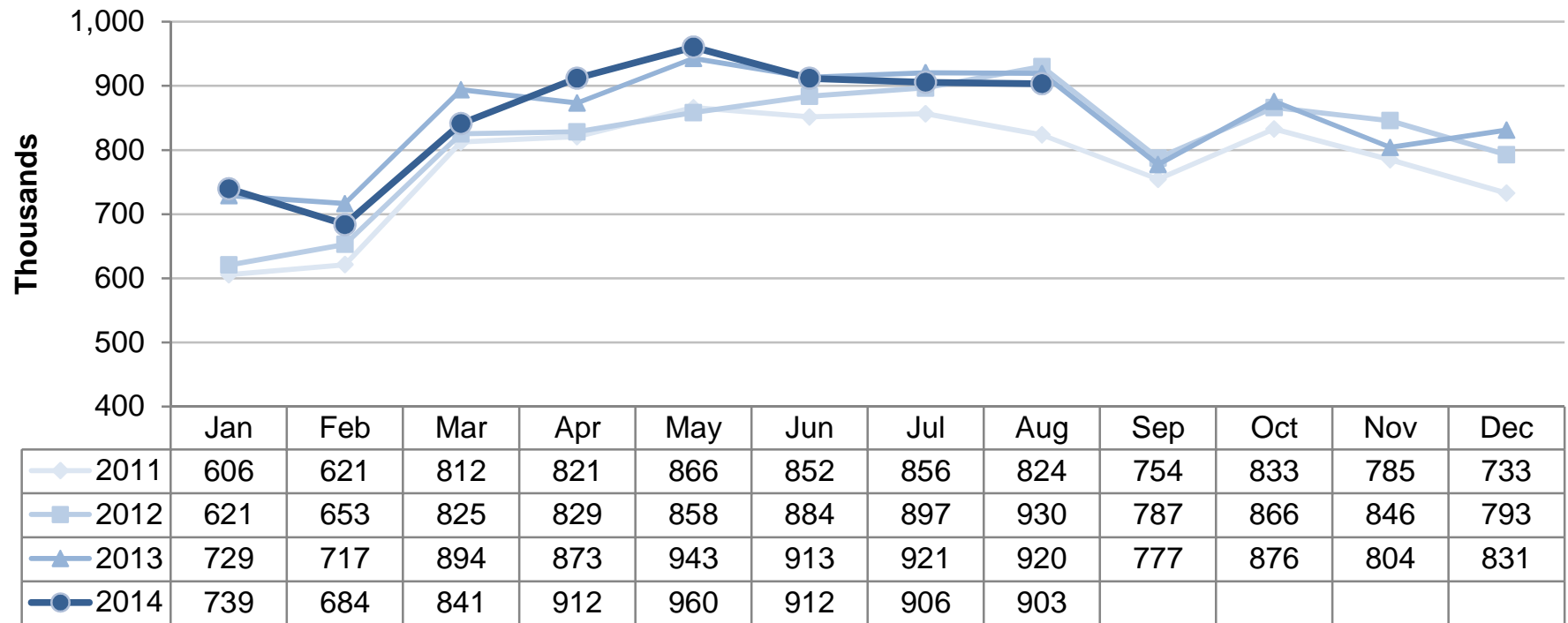


### BWI

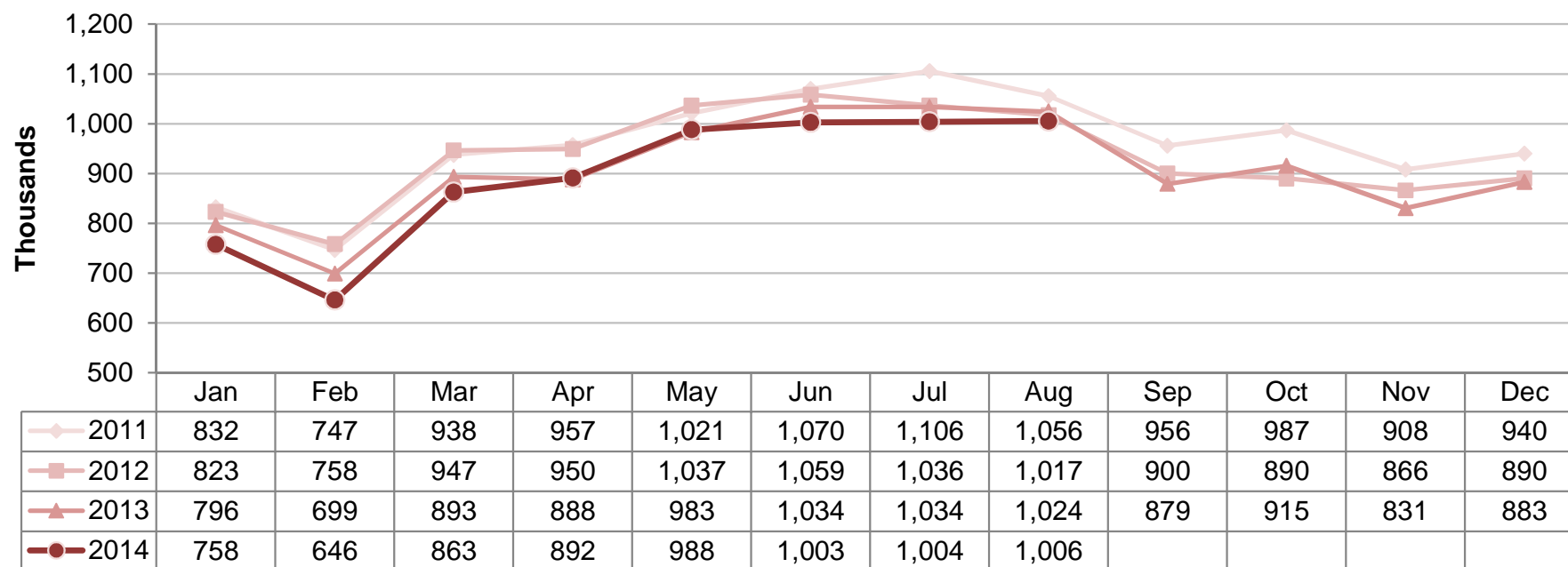




**Ronald Reagan Washington National Airport**  
**Total Commercial Passenger Enplanements**  
**Calendar Years 2011 - 2014**



**Dulles International Airport**  
Total Commercial Passenger Enplanements  
Calendar Years 2011 - 2014



**Commercial Passenger Market Share and Percent Change of Top Airlines  
in the Washington and Baltimore Region**

August 2014					August 2013				
National	Top Airlines*	Percent Change	Passengers	Market Share	Top Airlines*	Passengers	Market Share		
	1. American + US Airways	-9.8%	990,079	54.4%	1. American + US Airways	1,098,010	59.9%		
	2. Delta	6.0%	278,288	15.3%	2. Delta	262,528	14.3%		
	3. Southwest + Airtran	65.3%	151,505	8.3%	3. United	157,683	8.6%		
	4. United	-5.4%	149,203	8.2%	4. JetBlue	110,261	6.0%		
	5. JetBlue	30.5%	143,862	7.9%	5. Southwest + Airtran	91,649	5.0%		
	6. Alaska	2.8%	37,794	2.1%	6. Frontier	41,328	2.3%		
	7. Frontier	-32.8%	27,767	1.5%	7. Alaska	36,748	2.0%		
	8. Air Canada	8.3%	23,782	1.3%	8. Air Canada	21,957	1.2%		
	9. Sun Country	50.3%	10,028	0.6%	9. Virgin America	6,872	0.4%		
	10. Virgin America	8.8%	7,476	0.4%	10. Sun Country	6,670	0.4%		
Total Commercial Passengers		-0.8%	1,819,784	100.0%	Total Commercial Passengers		1,833,706	100.0%	

Dulles	Top Airlines*	Percent Change	Passengers	Market Share	Top Airlines*	Passengers	Market Share	
	1. United	-4.0%	1,300,260	63.5%	1. United	1,354,369	65.0%	
	2. American + US Airways	-7.2%	93,538	4.6%	2. American + US Airways	100,753	4.8%	
	3. Delta	-12.4%	77,688	3.8%	3. Delta	88,707	4.3%	
	4. Southwest	-8.0%	49,091	2.4%	4. Southwest	53,368	2.6%	
	5. Lufthansa	2.9%	48,276	2.4%	5. Lufthansa	46,935	2.3%	
	6. Air France	-4.0%	41,538	2.0%	6. JetBlue	45,891	2.2%	
	7. JetBlue	-16.1%	38,498	1.9%	7. Air France	43,252	2.1%	
	8. British Airways	10.6%	37,902	1.9%	8. Virgin America	34,423	1.7%	
	9. Virgin America	3.0%	35,452	1.7%	9. British Airways	34,262	1.6%	
	10. TACA + Avianca	20.7%	31,610	1.5%	10. TACA + Avianca	26,197	1.3%	
11. All Other Airlines		15.4%	293,090	14.3%	11. All Other Airlines		253,961	12.2%
Total Commercial Passengers		-1.7%	2,046,943	100.0%	Total Commercial Passengers		2,082,118	100.0%

Baltimore	Top Airlines*	Percent Change	Passengers	Market Share	Top Airlines*	Passengers	Market Share		
	1. Southwest + Airtran	0.7%	1,470,348	70.3%	1. Southwest + Airtran	1,459,889	69.5%		
	2. American + US Airways	-0.5%	196,298	9.4%	2. Delta	206,428	9.8%		
	3. Delta	-9.1%	187,584	9.0%	3. American + US Airways	197,339	9.4%		
	4. United + Continental	-13.0%	100,720	4.8%	4. United + Continental	115,788	5.5%		
	5. Spirit	35.9%	66,944	3.2%	5. Spirit	49,249	2.3%		
	6. JetBlue	4.0%	29,705	1.4%	6. JetBlue	28,564	1.4%		
	7. British Airways	1.1%	10,285	0.5%	7. British Airways	10,171	0.5%		
	8. All Other Airlines		-12.9%	28,503	1.4%	8. All Other Airlines		32,707	1.6%
	Total Commercial Passengers		-0.5%	2,090,387	100.0%	Total Commercial Passengers		2,100,135	100.0%

\* Includes affiliated regional carriers

**Commercial Passenger Market Share Summary**

Total Passengers	Aug 2014	Aug 2013	Change
National	30.5%	30.5%	0.1%
Dulles	34.4%	34.6%	-0.2%
Baltimore	35.1%	34.9%	0.2%
Domestic Passengers	Aug 2014	Aug 2013	Change
National	35.0%	34.7%	0.3%
Dulles	25.4%	26.4%	-1.0%
Baltimore	39.6%	38.9%	0.7%
International Passengers	Aug 2014	Aug 2013	Change
National	4.8%	5.0%	-0.2%
Dulles	86.2%	84.3%	1.9%
Baltimore	9.0%	10.7%	-1.7%

Totals may not sum due to rounding.

**Metropolitan Washington Airports Authority**  
**Ronald Reagan Washington National Airport**  
**Monthly Air Traffic Summary Report**  
**August 2014**

Description	Enplaned	Deplaned	Total	Year Ago	% Change
<b>Aircraft Operations</b>					
Commercial:					
Air Carrier:					
Domestic			10,923	10,746	1.6
International			122	60	103.3
Transborder			0	0	0.0
Total - Air Carrier			11,045	10,806	2.2
Regional:					
Domestic			11,705	13,354	- 12.3
International			0	44	- 100.0
Transborder			637	759	- 16.1
Total - Regional			12,342	14,157	- 12.8
Commercial:					
Domestic			22,628	24,100	- 6.1
Transborder			759	863	- 12.1
Total - Commercial			23,387	24,963	- 6.3
Non-Commercial:					
General Aviation			157	248	- 36.7
Military			261	288	- 9.4
Total - Non-Commercial			418	536	- 22.0
<b>Grand Total - Aircraft Operations</b>			<b>23,805</b>	<b>25,499</b>	<b>- 6.6</b>
<b>Passengers</b>					
Commercial:					
Air Carrier Domestic:					
Scheduled	601,868	619,629	1,221,497	1,201,399	1.7
Chartered	0	0	0	0	0.0
Total - Domestic Air Carrier	601,868	619,629	1,221,497	1,201,399	1.7
Air Carrier International:					
Scheduled	5,641	6,003	11,644	6,012	93.7
Chartered	0	0	0	0	0.0
Total - International Air Carrier	5,641	6,003	11,644	6,012	93.7
Air Carrier Transborder:					
Scheduled	0	0	0	0	0.0
Chartered	0	0	0	0	0.0
Total - Transborder Air Carrier	0	0	0	0	0.0
<b>Total - Air Carrier</b>	<b>607,509</b>	<b>625,632</b>	<b>1,233,141</b>	<b>1,207,411</b>	<b>2.1</b>
Regional:					
Domestic	280,178	275,862	556,040	589,245	- 5.6
International	0	0	0	3,188	- 100.0
Transborder	15,523	15,080	30,603	33,862	- 9.6
Total - Regional	295,701	290,942	586,643	626,295	- 6.3
Commercial:					
Domestic	882,046	895,491	1,777,537	1,790,644	- 0.7
Transborder	21,164	21,083	42,247	43,062	- 1.9
Total - Commercial	903,210	916,574	1,819,784	1,833,706	- 0.8
Non-Commercial:					
General Aviation	280	270	550	330	66.7
Military	180	150	330	428	- 22.9
Total - Non-Commercial	460	420	880	758	16.1
<b>Grand Total - Passengers</b>	<b>903,670</b>	<b>916,994</b>	<b>1,820,664</b>	<b>1,834,464</b>	<b>- 0.8</b>

**Metropolitan Washington Airports Authority  
Ronald Reagan Washington National Airport  
Monthly Air Traffic Summary Report  
August 2014**

<b>Description</b>	<b>Enplaned</b>	<b>Deplaned</b>	<b>Total</b>	<b>Year Ago</b>	<b>% Change</b>
<b>Cargo - Tonnes</b>					
Mail:					
Domestic	38	10	48	12	290.2
International	0	0	0	0	0.0
Transborder	0	0	0	0	0.0
Total - Mail:	38	10	48	12	290.2
Freight + Express:					
Domestic	43	55	98	146	- 32.3
International	0	0	0	0	0.0
Transborder	0	0	0	0	66.7
Total - Freight + Express:	43	55	99	146	- 32.3
Mail Plus Freight + Express:					
Domestic	81	66	146	158	- 7.3
Transborder	0	0	0	0	66.7
<b>Grand Total - Cargo</b>	<b>81</b>	<b>66</b>	<b>147</b>	<b>158</b>	<b>- 7.2</b>

**NOTE:** Figures may not sum to total due to rounding.

**Metropolitan Washington Airports Authority**  
**Ronald Reagan Washington National Airport**  
**Monthly Air Traffic Summary Report**  
**January 2014 - August 2014**

Description	Enplaned	Deplaned	Total	Year Ago	% Change
<b>Aircraft Operations</b>					
Commercial:					
Air Carrier:					
Domestic			79,942	83,759	- 4.6
International			452	308	46.8
Transborder			0	1,108	- 100.0
Total - Air Carrier			80,394	85,175	- 5.6
Regional:					
Domestic			97,153	101,463	- 4.2
International			162	323	- 49.8
Transborder			5,474	5,116	7.0
Total - Regional			102,789	106,902	- 3.8
Commercial:					
Domestic			177,095	185,222	- 4.4
Transborder			6,088	6,855	- 11.2
Total - Commercial			183,183	192,077	- 4.6
Non-Commercial:					
General Aviation			2,623	3,448	- 23.9
Military			1,760	1,545	13.9
Total - Non-Commercial			4,383	4,993	- 12.2
<b>Grand Total - Aircraft Operations</b>			<b>187,566</b>	<b>197,070</b>	<b>- 4.8</b>
<b>Passengers</b>					
Commercial:					
Air Carrier Domestic:					
Scheduled	4,483,162	4,515,133	8,998,295	9,182,962	- 2.0
Chartered	0	0	0	0	0.0
Total - Domestic Air Carrier	4,483,162	4,515,133	8,998,295	9,182,962	- 2.0
Air Carrier International:					
Scheduled	21,064	20,613	41,677	28,468	46.4
Chartered	0	0	0	0	0.0
Total - International Air Carrier	21,064	20,613	41,677	28,468	46.4
Air Carrier Transborder:					
Scheduled	0	0	0	51,788	- 100.0
Chartered	0	0	0	0	0.0
Total - Transborder Air Carrier	0	0	0	51,788	- 100.0
<b>Total - Air Carrier</b>	<b>4,504,226</b>	<b>4,535,746</b>	<b>9,039,972</b>	<b>9,263,218</b>	<b>- 2.4</b>
Regional:					
Domestic	2,233,381	2,250,578	4,483,959	4,376,767	2.4
International	4,877	4,766	9,643	20,763	- 53.6
Transborder	115,136	110,407	225,543	183,790	22.7
Total - Regional	2,353,394	2,365,751	4,719,145	4,581,320	3.0
Commercial:					
Domestic	6,716,543	6,765,711	13,482,254	13,559,729	- 0.6
Transborder	141,077	135,786	276,863	284,809	- 2.8
Total - Commercial	6,857,620	6,901,497	13,759,117	13,844,538	- 0.6
Non-Commercial:					
General Aviation	5,665	5,533	11,198	9,432	18.7
Military	2,461	2,397	4,858	5,203	- 6.6
Total - Non-Commercial	8,126	7,930	16,056	14,635	9.7
<b>Grand Total - Passengers</b>	<b>6,865,746</b>	<b>6,909,427</b>	<b>13,775,173</b>	<b>13,859,173</b>	<b>- 0.6</b>

**Metropolitan Washington Airports Authority**  
**Ronald Reagan Washington National Airport**  
**Monthly Air Traffic Summary Report**  
**January 2014 - August 2014**

<b>Description</b>	<b>Enplaned</b>	<b>Deplaned</b>	<b>Total</b>	<b>Year Ago</b>	<b>% Change</b>
<b>Cargo - Tonnes</b>					
Mail:					
Domestic	235	28	263	14	1,800.8
International	0	0	0	0	0.0
Transborder	0	0	0	0	0.0
Total - Mail:	235	28	263	14	1,800.8
Freight + Express:					
Domestic	609	504	1,113	1,362	- 18.3
International	0	0	0	0	- 100.0
Transborder	0	0	1	1	- 27.9
Total - Freight + Express:	610	504	1,114	1,364	- 18.3
Mail Plus Freight + Express:					
Domestic	844	532	1,376	1,376	0.0
Transborder	0	0	1	1	- 34.0
<b>Grand Total - Cargo</b>	<b>844</b>	<b>532</b>	<b>1,377</b>	<b>1,377</b>	<b>- 0.1</b>

**NOTE:** Figures may not sum to total due to rounding.

**Metropolitan Washington Airports Authority**  
**Ronald Reagan Washington National Airport**  
**Monthly Air Traffic Summary Report**  
**September 2013 - August 2014**

Description	Enplaned	Deplaned	Total	Year Ago	% Change
<b>Aircraft Operations</b>					
Commercial:					
Air Carrier:					
Domestic			119,383	124,344	- 4.0
International			478	336	42.3
Transborder			0	1,986	- 100.0
Total - Air Carrier			119,861	126,666	- 5.4
Regional:					
Domestic			147,888	149,828	- 1.3
International			245	399	- 38.6
Transborder			8,350	8,081	3.3
Total - Regional			156,483	158,308	- 1.2
Commercial:					
Domestic			267,271	274,172	- 2.5
Transborder			9,073	10,802	- 16.0
Total - Commercial			276,344	284,974	- 3.0
Non-Commercial:					
General Aviation			4,232	5,599	- 24.4
Military			2,568	1,897	35.4
Total - Non-Commercial			6,800	7,496	- 9.3
<b>Grand Total - Aircraft Operations</b>			<b>283,144</b>	<b>292,470</b>	<b>- 3.2</b>
<b>Passengers</b>					
Commercial:					
Air Carrier Domestic:					
Scheduled	6,622,016	6,624,279	13,246,295	13,523,273	- 2.0
Chartered	0	0	0	0	0.0
Total - Domestic Air Carrier	6,622,016	6,624,279	13,246,295	13,523,273	- 2.0
Air Carrier International:					
Scheduled	22,775	21,613	44,388	31,532	40.8
Chartered	0	0	0	0	0.0
Total - International Air Carrier	22,775	21,613	44,388	31,532	40.8
Air Carrier Transborder:					
Scheduled	0	0	0	92,799	- 100.0
Chartered	0	0	0	0	0.0
Total - Transborder Air Carrier	0	0	0	92,799	- 100.0
<b>Total - Air Carrier</b>	<b>6,644,791</b>	<b>6,645,892</b>	<b>13,290,683</b>	<b>13,647,604</b>	<b>- 2.6</b>
Regional:					
Domestic	3,324,593	3,341,538	6,666,131	6,487,655	2.8
International	6,949	6,974	13,923	24,951	- 44.2
Transborder	169,841	166,672	336,513	265,338	26.8
Total - Regional	3,501,383	3,515,184	7,016,567	6,777,944	3.5
Commercial:					
Domestic	9,946,609	9,965,817	19,912,426	20,010,928	- 0.5
Transborder	199,565	195,259	394,824	414,620	- 4.8
Total - Commercial	10,146,174	10,161,076	20,307,250	20,425,548	- 0.6
Non-Commercial:					
General Aviation	8,454	8,262	16,716	14,439	15.8
Military	3,602	3,517	7,119	8,399	- 15.2
Total - Non-Commercial	12,056	11,779	23,835	22,838	4.4
<b>Grand Total - Passengers</b>	<b>10,158,230</b>	<b>10,172,855</b>	<b>20,331,085</b>	<b>20,448,386</b>	<b>- 0.6</b>



**Metropolitan Washington Airports Authority  
Ronald Reagan Washington National Airport  
Monthly Air Traffic Summary Report  
September 2013 - August 2014**

<b>Description</b>	<b>Enplaned</b>	<b>Deplaned</b>	<b>Total</b>	<b>Year Ago</b>	<b>% Change</b>
<b>Cargo - Tonnes</b>					
Mail:					
Domestic	259	45	305	16	1,806.8
International	0	0	0	0	0.0
Transborder	0	0	0	0	- 100.0
Total - Mail:	259	45	305	16	1,804.1
Freight + Express:					
Domestic	876	719	1,595	3,424	- 53.4
International	0	0	0	0	- 100.0
Transborder	1	1	1	2	- 12.5
Total - Freight + Express:	877	720	1,597	3,425	- 53.4
Mail Plus Freight + Express:					
Domestic	1,135	765	1,900	3,440	- 44.8
Transborder	1	1	1	2	- 19.3
<b>Grand Total - Cargo</b>	<b>1,136</b>	<b>766</b>	<b>1,902</b>	<b>3,441</b>	<b>- 44.7</b>

**NOTE:** Figures may not sum to total due to rounding.

**Metropolitan Washington Airports Authority**  
**Washington Dulles International Airport**  
**Monthly Air Traffic Summary Report**  
**August 2014**

Description	Enplaned	Deplaned	Total	Year Ago	% Change
<b>Aircraft Operations</b>					
Commercial:					
Air Carrier:					
Domestic			6,019	6,677	- 9.9
International			3,374	3,302	2.2
Transborder			0	0	0.0
Total - Air Carrier			9,393	9,979	- 5.9
Regional:					
Domestic			11,728	12,760	- 8.1
International			14	0	100.0
Transborder			964	987	- 2.3
Total - Regional			12,706	13,747	- 7.6
Commercial:					
Domestic			17,747	19,437	- 8.7
International			4,352	4,289	1.5
Total - Commercial			22,099	23,726	- 6.9
Non-Commercial:					
General Aviation			2,607	2,660	- 2.0
Military			40	84	- 52.4
Total - Non-Commercial			2,647	2,744	- 3.5
<b>Grand Total - Aircraft Operations</b>			<b>24,746</b>	<b>26,470</b>	<b>- 6.5</b>
<b>Passengers</b>					
Commercial:					
Air Carrier Domestic:					
Scheduled	392,564	405,280	797,844	830,501	- 3.9
Chartered	100	97	197	1,693	- 88.4
Total - Domestic Air Carrier	392,664	405,377	798,041	832,194	- 4.1
Air Carrier International:					
Scheduled	335,816	372,932	708,748	671,861	5.5
Chartered	445	480	925	65	1,323.1
Total - International Air Carrier	336,261	373,412	709,673	671,926	5.6
Air Carrier Transborder:					
Scheduled	0	0	0	0	0.0
Chartered	0	0	0	0	0.0
Total - Transborder Air Carrier	0	0	0	0	0.0
<b>Total - Air Carrier</b>	<b>728,925</b>	<b>778,789</b>	<b>1,507,714</b>	<b>1,504,120</b>	<b>0.2</b>
Regional:					
Domestic	252,575	237,600	490,175	530,181	- 7.5
International	1,307	1,010	2,317	0	100.0
Transborder	22,717	24,020	46,737	47,817	- 2.3
Total - Regional	276,599	262,630	539,229	577,998	- 6.7
Commercial:					
Domestic	645,239	642,977	1,288,216	1,362,375	- 5.4
International	360,285	398,442	758,727	719,743	5.4
Total - Commercial	1,005,524	1,041,419	2,046,943	2,082,118	- 1.7
Non-Commercial:					
General Aviation	5,262	4,901	10,163	8,848	14.9
Military	5	7	12	34	- 64.7
Total - Non-Commercial	5,267	4,908	10,175	8,882	14.6
<b>Grand Total - Passengers</b>	<b>1,010,791</b>	<b>1,046,327</b>	<b>2,057,118</b>	<b>2,091,000</b>	<b>- 1.6</b>

**Metropolitan Washington Airports Authority**  
**Washington Dulles International Airport**  
**Monthly Air Traffic Summary Report**  
**August 2014**

<b>Description</b>	<b>Enplaned</b>	<b>Deplaned</b>	<b>Total</b>	<b>Year Ago</b>	<b>% Change</b>
<b>Cargo - Tonnes</b>					
Mail:					
Domestic	181	316	497	411	20.8
International	443	16	459	1,456	- 68.5
Total - Mail:	624	332	956	1,867	- 48.8
Freight + Express:					
Domestic	3,950	3,250	7,201	7,152	0.7
International	4,974	8,687	13,661	11,211	21.9
Total - Freight + Express:	8,925	11,937	20,862	18,363	13.6
Mail Plus Freight + Express:					
Domestic	4,131	3,567	7,698	7,564	1.8
International	5,418	8,703	14,120	12,667	11.5
<b>Grand Total - Cargo</b>	<b>9,549</b>	<b>12,269</b>	<b>21,818</b>	<b>20,230</b>	<b>7.8</b>

**NOTE:** Figures may not sum to total due to rounding.

**Metropolitan Washington Airports Authority**  
**Washington Dulles International Airport**  
**Monthly Air Traffic Summary Report**  
**January 2014 - August 2014**

Description	Enplaned	Deplaned	Total	Year Ago	% Change
<b>Aircraft Operations</b>					
Commercial:					
Air Carrier:					
Domestic			45,453	49,524	- 8.2
International			24,522	24,242	1.2
Transborder			0	12	- 100.0
Total - Air Carrier			69,975	73,778	- 5.2
Regional:					
Domestic			90,318	97,225	- 7.1
International			344	0	100.0
Transborder			6,302	7,026	- 10.3
Total - Regional			96,964	104,251	- 7.0
Commercial:					
Domestic			135,771	146,749	- 7.5
International			31,168	31,280	- 0.4
Total - Commercial			166,939	178,029	- 6.2
Non-Commercial:					
General Aviation			25,700	26,872	- 4.4
Military			393	674	- 41.7
Total - Non-Commercial			26,093	27,546	- 5.3
<b>Grand Total - Aircraft Operations</b>			<b>193,032</b>	<b>205,575</b>	<b>- 6.1</b>
<b>Passengers</b>					
Commercial:					
Air Carrier Domestic:					
Scheduled	2,848,195	2,900,704	5,748,899	6,052,792	- 5.0
Chartered	4,003	4,005	8,008	12,630	- 36.6
Total - Domestic Air Carrier	2,852,198	2,904,709	5,756,907	6,065,422	- 5.1
Air Carrier International:					
Scheduled	2,271,355	2,330,071	4,601,426	4,453,379	3.3
Chartered	3,426	3,314	6,740	7,813	- 13.7
Total - International Air Carrier	2,274,781	2,333,385	4,608,166	4,461,192	3.3
Air Carrier Transborder:					
Scheduled	0	0	0	0	0.0
Chartered	0	0	0	473	- 100.0
Total - Transborder Air Carrier	0	0	0	473	- 100.0
<b>Total - Air Carrier</b>	<b>5,126,979</b>	<b>5,238,094</b>	<b>10,365,073</b>	<b>10,527,087</b>	<b>- 1.5</b>
Regional:					
Domestic	1,884,832	1,849,155	3,733,987	3,962,894	- 5.8
International	12,364	8,909	21,273	0	100.0
Transborder	134,110	146,879	280,989	297,595	- 5.6
Total - Regional	2,031,306	2,004,943	4,036,249	4,260,489	- 5.3
Commercial:					
Domestic	4,737,030	4,753,864	9,490,894	10,028,316	- 5.4
International	2,421,255	2,489,173	4,910,428	4,759,260	3.2
Total - Commercial	7,158,285	7,243,037	14,401,322	14,787,576	- 2.6
Non-Commercial:					
General Aviation	49,887	47,847	97,734	97,238	0.5
Military	163	165	328	711	- 53.9
Total - Non-Commercial	50,050	48,012	98,062	97,949	0.1
<b>Grand Total - Passengers</b>	<b>7,208,335</b>	<b>7,291,049</b>	<b>14,499,384</b>	<b>14,885,525</b>	<b>- 2.6</b>

**Metropolitan Washington Airports Authority**  
**Washington Dulles International Airport**  
**Monthly Air Traffic Summary Report**  
**January 2014 - August 2014**

<b>Description</b>	<b>Enplaned</b>	<b>Deplaned</b>	<b>Total</b>	<b>Year Ago</b>	<b>% Change</b>
<b>Cargo - Tonnes</b>					
Mail:					
Domestic	1,550	2,974	4,524	3,369	34.3
International	1,787	351	2,138	3,818	- 44.0
Total - Mail:	3,337	3,325	6,662	7,188	- 7.3
Freight + Express:					
Domestic	29,370	24,328	53,698	60,630	- 11.4
International	45,825	70,036	115,861	98,064	18.1
Total - Freight + Express:	75,195	94,365	169,560	158,695	6.8
Mail Plus Freight + Express:					
Domestic	30,920	27,302	58,222	63,999	- 9.0
International	47,612	70,387	117,999	101,883	15.8
<b>Grand Total - Cargo</b>	<b>78,532</b>	<b>97,689</b>	<b>176,221</b>	<b>165,882</b>	<b>6.2</b>

**NOTE:** Figures may not sum to total due to rounding.

**Metropolitan Washington Airports Authority**  
**Washington Dulles International Airport**  
**Monthly Air Traffic Summary Report**  
**September 2013 - August 2014**

Description	Enplaned	Deplaned	Total	Year Ago	% Change
<b>Aircraft Operations</b>					
Commercial:					
Air Carrier:					
Domestic			69,906	74,387	- 6.0
International			36,108	35,150	2.7
Transborder			1	13	- 92.3
Total - Air Carrier			106,015	109,550	- 3.2
Regional:					
Domestic			138,216	144,269	- 4.2
International			447	0	100.0
Transborder			9,831	10,735	- 8.4
Total - Regional			148,494	155,004	- 4.2
Commercial:					
Domestic			208,122	218,656	- 4.8
International			46,387	45,898	1.1
Total - Commercial			254,509	264,554	- 3.8
Non-Commercial:					
General Aviation			40,046	41,106	- 2.6
Military			703	927	- 24.2
Total - Non-Commercial			40,749	42,033	- 3.1
<b>Grand Total - Aircraft Operations</b>			<b>295,258</b>	<b>306,587</b>	<b>- 3.7</b>
<b>Passengers</b>					
Commercial:					
Air Carrier Domestic:					
Scheduled	4,266,351	4,335,855	8,602,206	9,029,561	- 4.7
Chartered	7,080	6,967	14,047	19,651	- 28.5
Total - Domestic Air Carrier	4,273,431	4,342,822	8,616,253	9,049,212	- 4.8
Air Carrier International:					
Scheduled	3,318,000	3,354,033	6,672,033	6,455,889	3.3
Chartered	5,347	5,261	10,608	12,059	- 12.0
Total - International Air Carrier	3,323,347	3,359,294	6,682,641	6,467,948	3.3
Air Carrier Transborder:					
Scheduled	0	0	0	0	0.0
Chartered	50	139	189	473	- 60.0
Total - Transborder Air Carrier	50	139	189	473	- 60.0
<b>Total - Air Carrier</b>	<b>7,596,828</b>	<b>7,702,255</b>	<b>15,299,083</b>	<b>15,517,633</b>	<b>- 1.4</b>
Regional:					
Domestic	2,849,314	2,809,087	5,658,401	5,917,080	- 4.4
International	14,685	11,364	26,049	0	100.0
Transborder	206,294	220,245	426,539	442,013	- 3.5
Total - Regional	3,070,293	3,040,696	6,110,989	6,359,093	- 3.9
Commercial:					
Domestic	7,122,745	7,151,909	14,274,654	14,966,292	- 4.6
International	3,544,376	3,591,042	7,135,418	6,910,434	3.3
Total - Commercial	10,667,121	10,742,951	21,410,072	21,876,726	- 2.1
Non-Commercial:					
General Aviation	76,072	74,010	150,082	147,678	1.6
Military	390	380	770	834	- 7.7
Total - Non-Commercial	76,462	74,390	150,852	148,512	1.6
<b>Grand Total - Passengers</b>	<b>10,743,583</b>	<b>10,817,341</b>	<b>21,560,924</b>	<b>22,025,238</b>	<b>- 2.1</b>

**Metropolitan Washington Airports Authority**  
**Washington Dulles International Airport**  
**Monthly Air Traffic Summary Report**  
**September 2013 - August 2014**

<b>Description</b>	<b>Enplaned</b>	<b>Deplaned</b>	<b>Total</b>	<b>Year Ago</b>	<b>% Change</b>
<b>Cargo - Tonnes</b>					
Mail:					
Domestic	2,495	4,590	7,085	4,928	43.8
International	5,175	2,860	8,035	4,837	66.1
Total - Mail:	7,670	7,451	15,120	9,765	54.8
Freight + Express:					
Domestic	43,858	36,797	80,656	95,501	- 15.5
International	64,272	103,653	167,924	150,042	11.9
Total - Freight + Express:	108,130	140,450	248,580	245,543	1.2
Mail Plus Freight + Express:					
Domestic	46,353	41,388	87,741	100,429	- 12.6
International	69,446	106,513	175,959	154,879	13.6
<b>Grand Total - Cargo</b>	<b>115,800</b>	<b>147,901</b>	<b>263,700</b>	<b>255,308</b>	<b>3.3</b>

**NOTE:** Figures may not sum to total due to rounding.