

# **Runway 1-19 Safety Area Improvements and Runway 1 Hold Apron Modification**

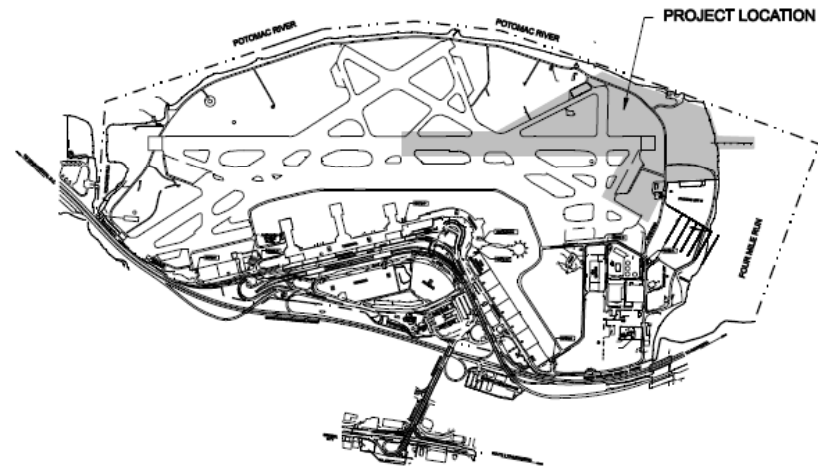
## **GENERAL PACKAGE**

**Metropolitan Washington Airports Authority  
Ronald Reagan Washington National Airport**



# CONSTRUCTION PACKAGES

- EARLY UTILITY PACKAGE (on-going)
  - Relocate Utilities
  - Levee Road Base Course
  - Glide Slope Site Work

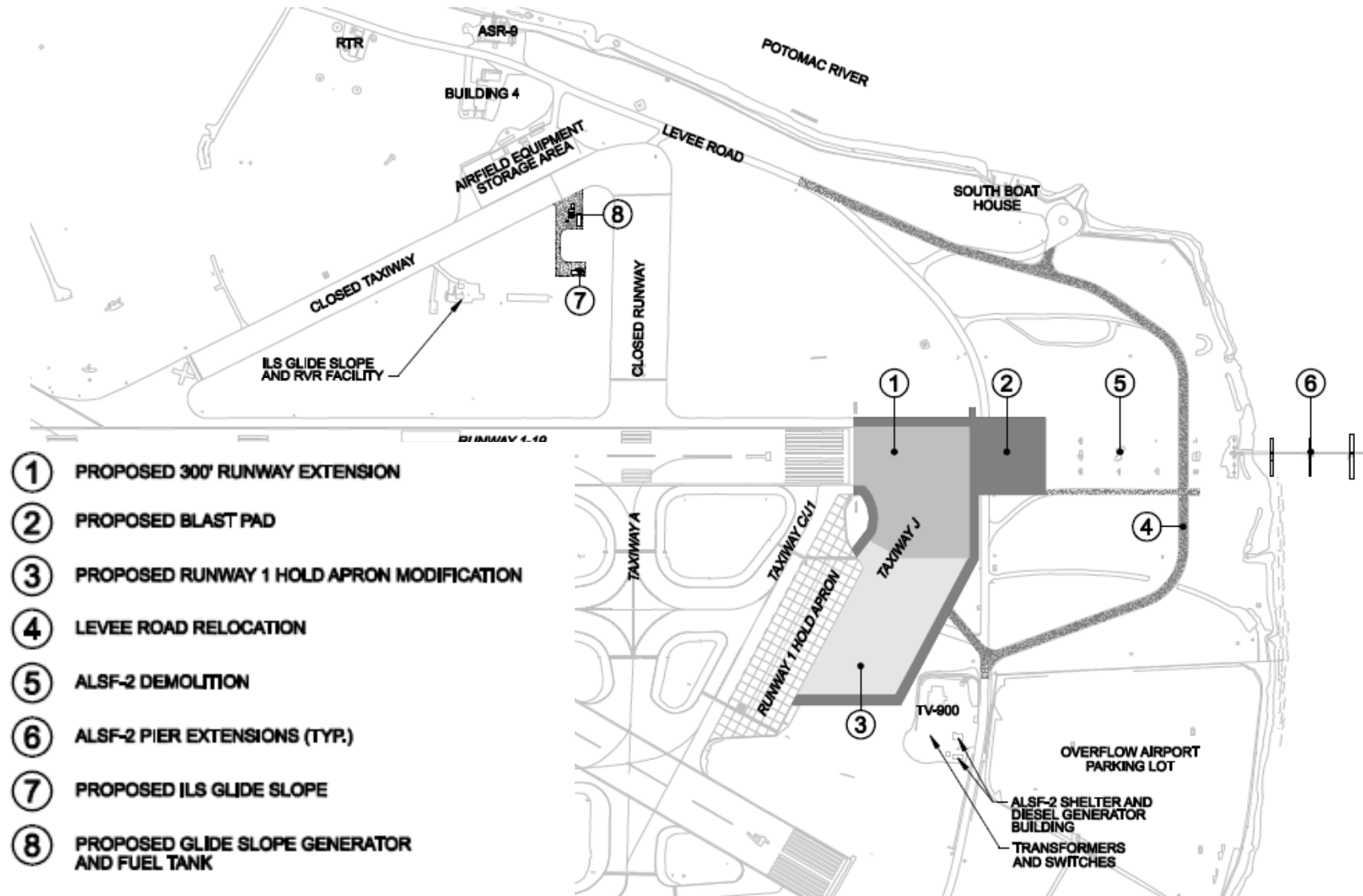


- **GENERAL CONSTRUCTION PACKAGE**
- ALSF-2 PACKAGE

# CONSTRUCTION OVERVIEW

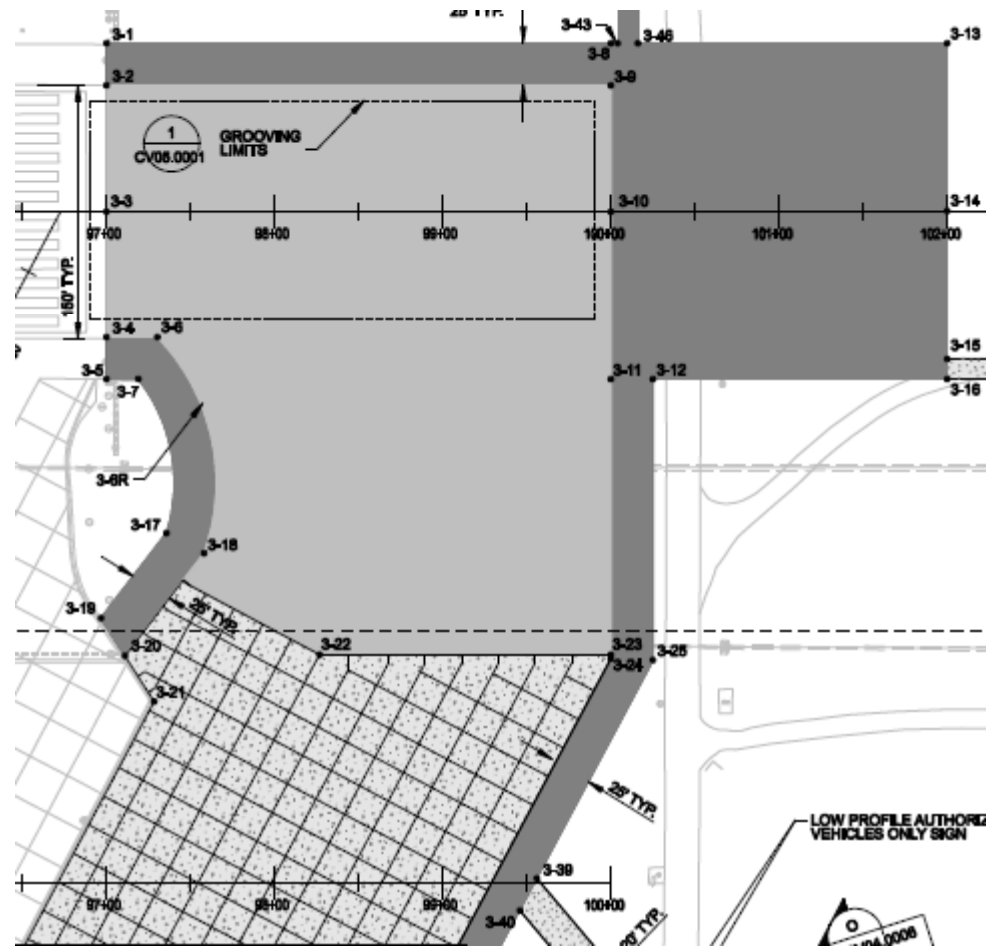
- PROJECT ELEMENTS
- PAVEMENTS
- GROUND TREATMENT
- LEVEE ROAD
- CONTAMINATED MATERIALS
- NAVAIDS
- SITE ACCESS AND STAGING
- WORK AREAS
- WORK RESTRICTIONS
- PROJECT MILESTONES

# PROJECT ELEMENTS



# PAVEMENTS

- FULL STRENGTH BITUMINOUS PAVEMENT
- FULL STRENGTH PCC PAVEMENT
- BLAST PAD AND SHOULDER PAVEMENT
- LEVEE ROAD PAVEMENT
- GRAVEL PAVEMENT



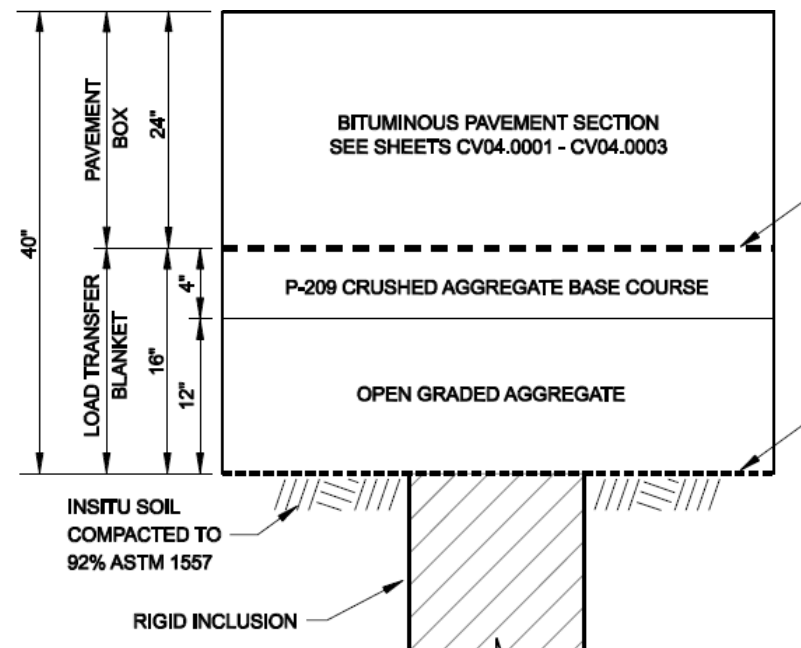
# GROUND TREATMENT

- RIGID INCLUSIONS

- CSV - Cement/Sand Vertical Columns (7" Diameter)
- CMC - Controlled Modulus Columns (12" Diameter)
- CMC - Controlled Modulus Columns (18" Diameter)
- VCC – Vibro Concrete Columns (18" Diameter)

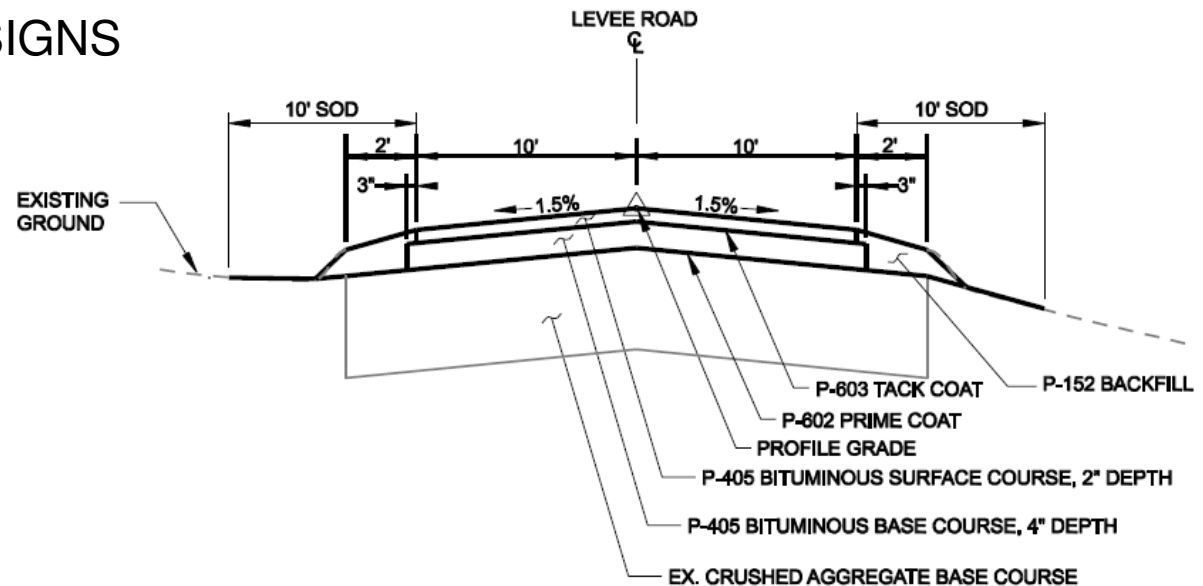
- LIGHTWEIGHT FLOWABLE FILL

- DEPTH VARIES 30" to 66"
- UNDER PCC AND AC PAVEMENT

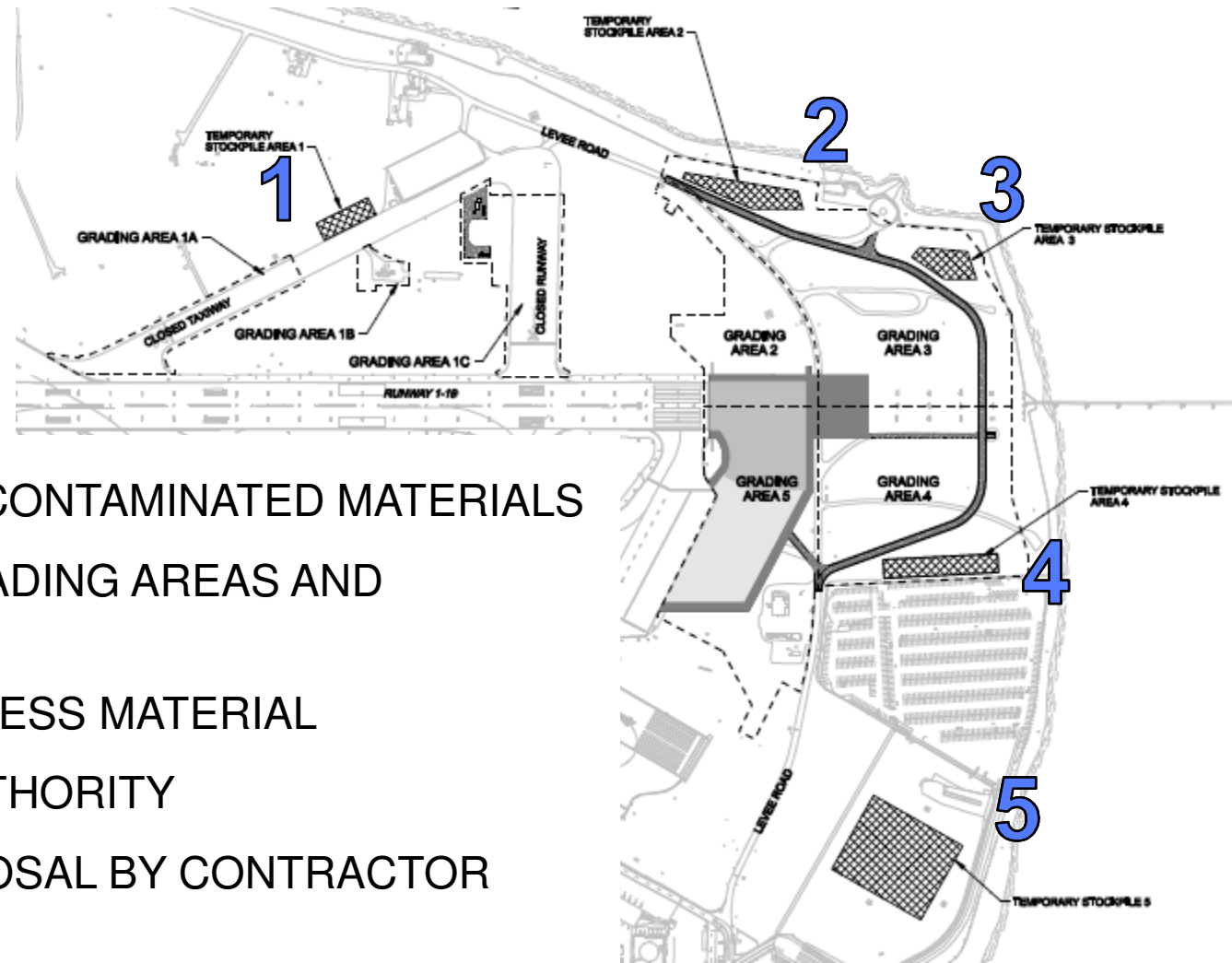


# LEVEE ROAD

- BASE CONSTRUCTED AS PART OF EARLY UTILITY PACKAGE
- SETTLEMENT MONITORING PROGRAM
- AC BASE COURSE
- AC SURFACE COURSE
- RELOCATE CAT II SIGNS



# CONTAMINATED MATERIALS



- PRESENCE OF CONTAMINATED MATERIALS
- 5 SEPARATE GRADING AREAS AND STOCKPILES
- STOCKPILE EXCESS MATERIAL
- TESTING BY AUTHORITY
- MATERIAL DISPOSAL BY CONTRACTOR



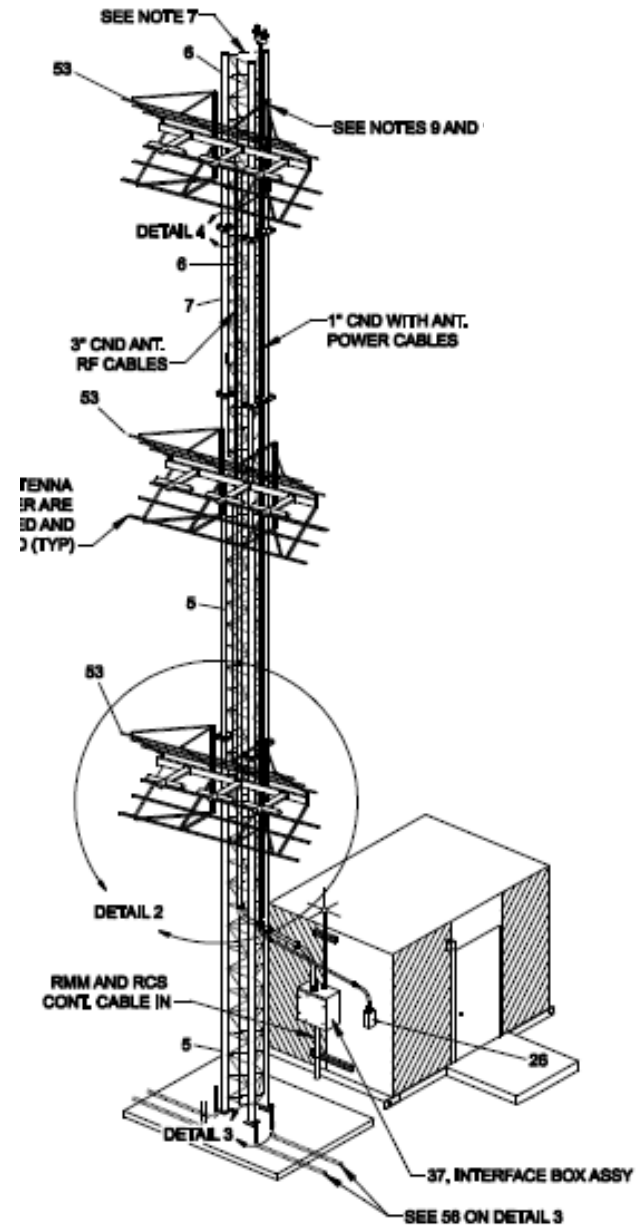
# NAVAIDS

## R/W 1 GLIDE SLOPE

- NEW SHELTER AND ANTENNA
- RELOCATE RVR
- RELOCATE GENERATOR/BUILDING
- REMOVE EX. GLIDE SLOPE/PAVEMENTS

## R/W 1 ALSF-2

- REMOVE EXISTING ALSF-2
- ALSF-2 FOUNDATIONS (BLAST PAD)
- PIER EXTENSIONS



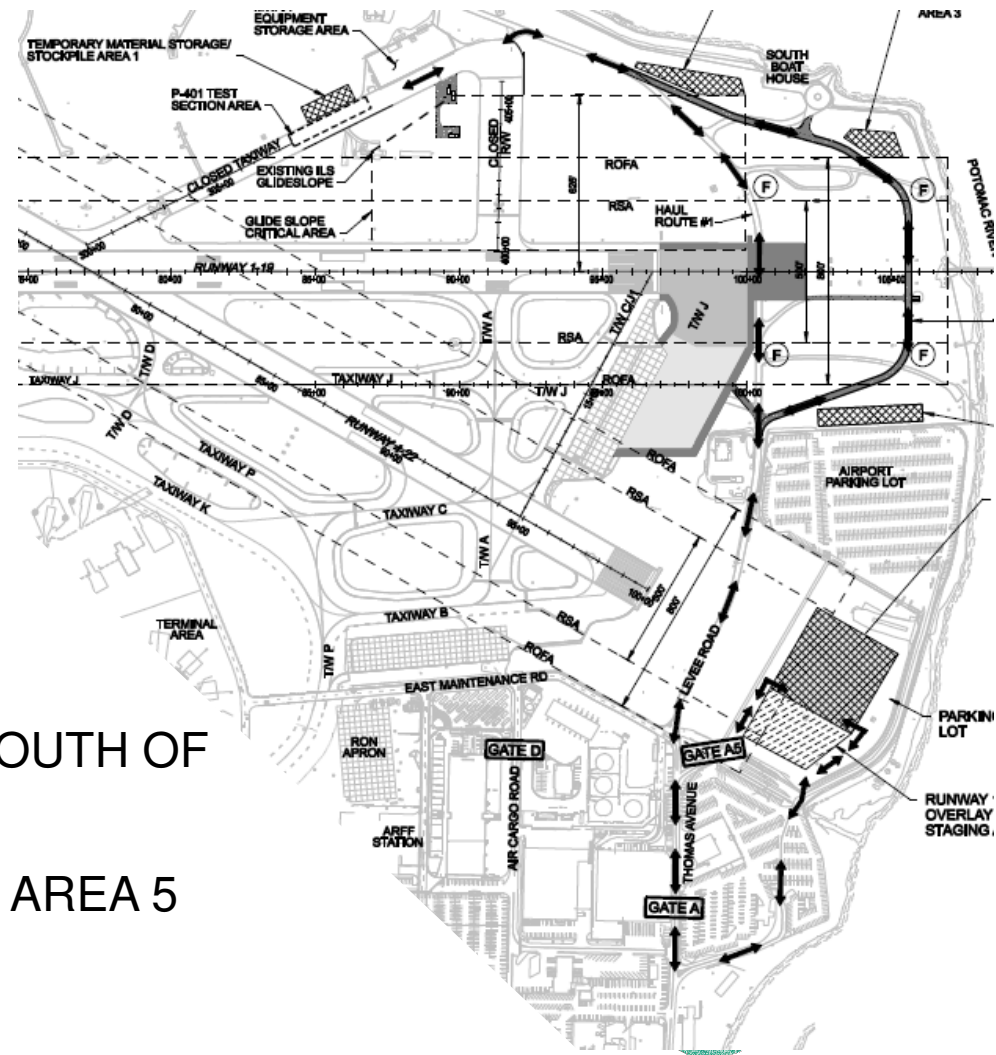
# SITE ACCESS AND STAGING

## ENTRY

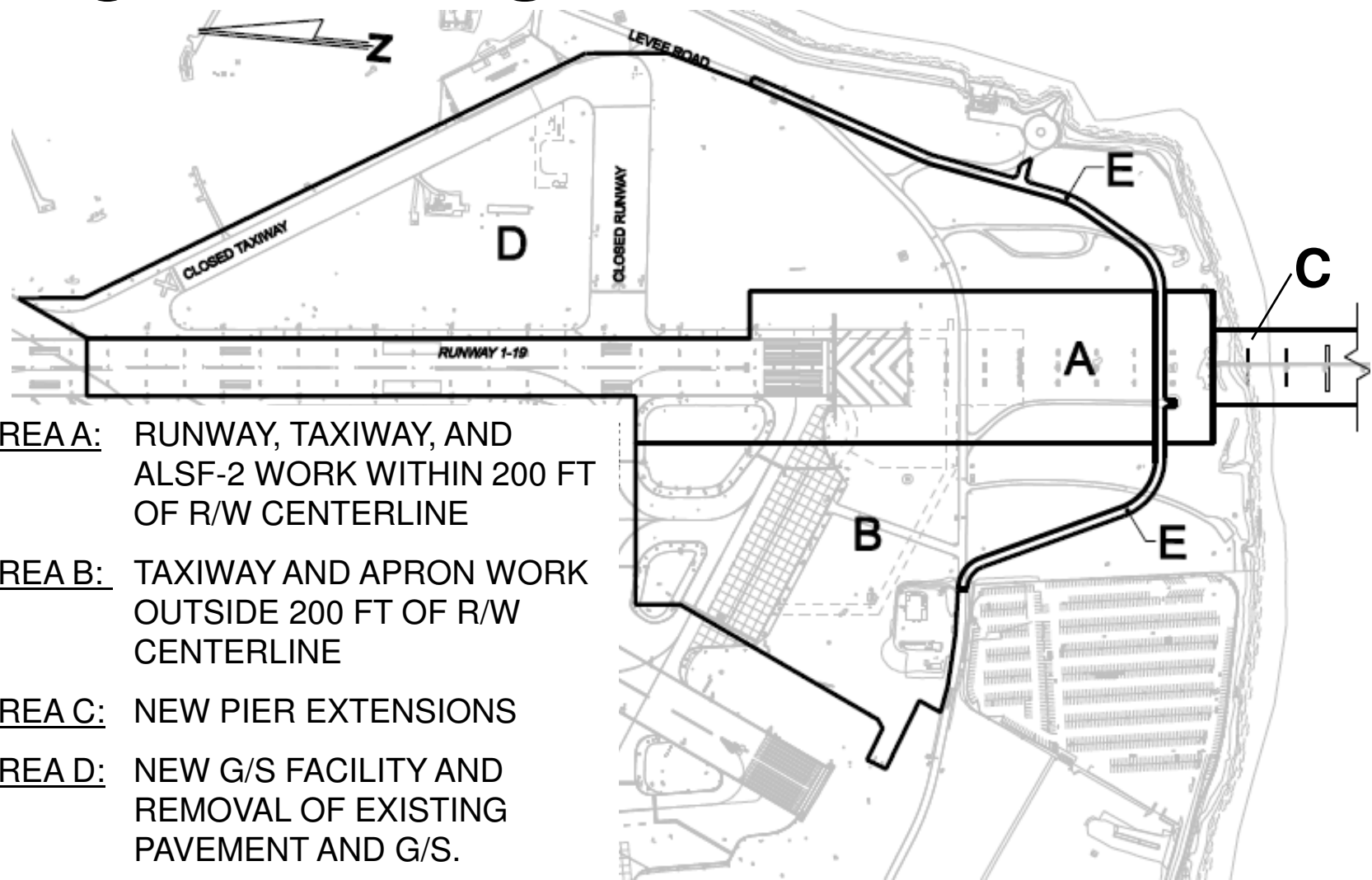
- THOMAS AVE THROUGH GATE A
- STAGING AREA THROUGH GATE A5
- LEVEE ROAD

## CONTRACTOR STAGING

- ABANDONED PARKING LOT SOUTH OF RUNWAY 4 (90,000 SF)
- COINCIDES WITH STOCKPILE AREA 5



# WORK AREAS



AREA A: RUNWAY, TAXIWAY, AND ALSF-2 WORK WITHIN 200 FT OF R/W CENTERLINE

AREA B: TAXIWAY AND APRON WORK OUTSIDE 200 FT OF R/W CENTERLINE

AREA C: NEW PIER EXTENSIONS

AREA D: NEW G/S FACILITY AND REMOVAL OF EXISTING PAVEMENT AND G/S.

AREA E: LEVEE ROAD RELOCATION

# WORK RESTRICTIONS

- SAFETY AREA – GRADING CRITERIA
- GLIDE SLOPE CRITICAL AREA
- PART 77 AIRSPACE HEIGHT RESTRICTIONS

**RUNWAY 1-19 CLOSURE TIME TABLE**

DURATION	AVAILABLE CLOSURE HOURS*
JANUARY 1, 2011 TO MARCH 31, 2011	0100 HOURS (1:00am) TO 0600 HOURS (6:00am)
APRIL 1, 2011 TO NOVEMBER 21, 2011	1100 HOURS (11:00pm) TO 0600 HOURS (6:00am)
NOVEMBER 22, 2011 TO NOVEMBER 29, 2011	CAN NOT BE CLOSED FOR CONSTRUCTION ACTIVITIES
NOVEMBER 30, 2011 TO DECEMBER 15, 2011	1100 HOURS (11:00pm) TO 0600 HOURS (6:00am)
DECEMBER 16, 2011 TO PROJECT COMPLETION	0100 HOURS (1:00am) TO 0600 HOURS (6:00am)

# PROJECT MILESTONES

## **Milestone #1 - Complete Mobilization**

Milestone #2a – Levee Road Base Course

Milestone #2b – Remove ALSF-2

Milestone #2c – Complete Levee Road Monitoring

Milestone #2d – Complete Grading and Pier Extensions

## **Milestone #2 – Complete Runway / Taxiway / Glide Slope**

**Milestone #3 (April 5, 2012) – Commission R/W Extension**

**Milestone #4 – Remove Glide Slope/Pavements, Levee Road**



# **Conclusion**

**Metropolitan Washington Airports Authority  
Ronald Reagan Washington National Airport**

