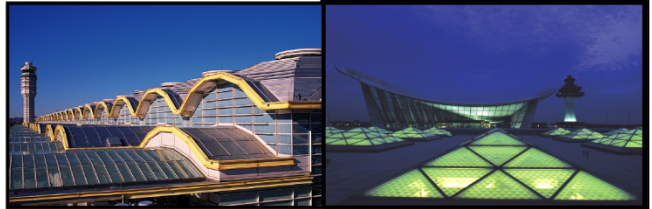


April  
2013

# air traffic statistics

---



Prepared by the Office of Finance  
Department of Internal Controls, Compliance and Financial  
Strategy



# Metropolitan Washington Airports Authority

## Air Traffic Statistics

### Table of Contents

#### Summary

Air Traffic Summary.....	3
SH&E Air Traffic Schedule Activity .....	7
Passenger Trends .....	8
Total Passengers 4-Year Comparison - DCA, IAD, BWI.....	9
Total Commercial Passenger Enplanements .....	10
Market Share and Percentage of Top Airlines - DCA, IAD, BWI.....	12

#### Air Traffic Statistics - DCA

Monthly Air Traffic Summary – Current Month .....	13
Monthly Air Traffic Summary – Last 12 Months .....	15
Monthly Air Traffic Summary – Year-to-Date .....	17

#### Air Traffic Statistics - IAD

Monthly Air Traffic Summary – Current Month .....	19
Monthly Air Traffic Summary – Last 12 Months .....	21
Monthly Air Traffic Summary – Year-to-Date .....	23

## Air Traffic Summary

Below is a summary of the April 2013 Air Traffic Statistics Report, which contains passenger data for National and Dulles as well as cargo data for Dulles. This report also contains comparative BWI Airport and Airlines for America (A4A) U.S. Industry passenger statistics.

	Current Month			Last 12 Months			2013 Year-to-Date		
	DCA	IAD	System*	DCA	IAD	System*	DCA	IAD	System*
<b>Total Passengers (millions)</b>	1.8	1.8	3.6	20.2	22.2	42.4	6.5	6.7	13.2
<b>% Change vs. Year Ago</b>	5.5%	(6.4%)	(0.9%)	6.6%	(4.6%)	0.4%	9.2%	(5.6%)	1.2%

U.S. Industry average passenger traffic as reported by the Airlines for America (A4A), Office of Economics:

Enplanements	April	YTD
<b>Domestic</b>	0.3%	0.9%
<b>International</b>	(0.2%)	1.8%
<b>System</b>	0.3%	1.0%

### National

- Current Month Activity vs. April 2012 increased 5.5% and was primarily driven by 5.1% growth in *domestic* traffic due to the following service enhancements:
  - **US Airways (mainline and regional)**
    - New service to Augusta, Cincinnati, Des Moines, Key West, Minneapolis/St. Paul, Omaha, and San Diego
    - Increased service to Myrtle Beach, Savannah, and Wilmington
  - **JetBlue**
    - New service to San Juan and Tampa
    - Increased service to Boston, Ft. Lauderdale, and Orlando
  - **Southwest**
    - New service to Austin and St. Louis
  - **Virgin America**
    - New service to San Francisco
  - **Delta**
    - Increased service to Salt Lake City

- **Frontier**
    - Increased service to Madison
  - **Alaska**
    - Increased service to Portland, OR
- Offsetting the increases were the following reductions in domestic service:
  - **US Airways (mainline and regional)**
    - Reduced service to Little Rock
    - Discontinued service to Dallas/Ft. Worth
  - **Delta (mainline and regional)**
    - Reduced service to Memphis
    - Discontinued service to Charleston, Des Moines, Grand Rapids, Hartford, and Indianapolis
  - **Frontier**
    - Reduced service to Kansas City
    - Discontinued service to Grand Rapids and Milwaukee
  - **Spirit**
    - Discontinued operations, effective October 2012
- *Transborder* passenger traffic growth of 32.4% was primarily driven by US Airways Express's new service to Halifax, Montreal Dorval, and Toronto
- US Airways mainline had the largest passenger market share with 20.3%; activity decreased 1.7% compared to April 2012. Including its affiliates, US Airways's commercial market share totaled 45.7% and activity increased 14.4% compared to April 2012.

## Dulles

- Current Month Activity vs. April 2012 decreased 6.4% and was primarily driven by a 9.3% decline in *domestic* commercial traffic:
  - **United (mainline and regional)**
    - Reduced service to Altoona
    - Discontinued service to Allentown, Manchester, Pensacola and Westchester County
  - **JetBlue**
    - Discontinued service to Ft. Lauderdale
    - Repositioned service to Orlando from Dulles to National
  - **Delta**
    - Discontinued service to Cincinnati and Salt Lake City
  - **Southwest**
    - Discontinued service to Atlanta
  - **Virgin America**
    - Reduced service to San Francisco
- Offsetting the declines were the following increases in domestic service:
  - **United (mainline and regional)**
    - New service to Fayetteville, Ft. Lauderdale, Greenbrier, and Honolulu

- *International/Transborder* passenger traffic growth of 0.8% was primarily driven by:
  - **United**
    - Increased service to Dublin, Guatemala City, Manchester, San Jose and San Salvador
  - **Etihad**
    - Increased service to Abu Dhabi
  - **Emirates**
    - New service to Dubai
  - **Aeromexico**
    - New service to Mexico City
  
- Offsetting the increases were the following declines in international service:
  - **United**
    - Reduced service to Paris
    - Discontinued service to Accra, Madrid and Moscow Domodedovo
  
- United mainline had the largest passenger market share with 41.6%; activity decreased 3.5% compared to April 2012. Including its regional affiliates, United's commercial market share totaled 67.8% and activity declined 3.8% from April 2012.
  
- Overall, total cargo (mail and freight) activity decreased 1.1% compared to April 2012 and lagged the A4A U.S. Industry average growth rate of 1.1%. The decrease was primarily driven by:
  - Domestic decrease of 7.2% as a result of United downsizing from wide-body to narrow-body flights to and from the West Coast
 Which was offset by:
  - International increase of 3.1% as a result of new Etihad Airways and Emirates Airlines flights

## **BWI**

- Current Month Activity vs. April 2012 decreased 4.6%
  
- BWI's total passengers of 1.9 M surpassed Dulles by 45.6 K passengers and National by 92.6 K passengers
  
- Southwest had the largest passenger market share with 71.6%; activity decreased 5.2% compared to April 2012

Ronald Reagan Washington National Airport  
SH&E Air Traffic Schedule Activity  
April 2013 vs. April 2012

<b>April 2013:</b>	<b>Departures</b>	<b>Airlines*</b>	<b>Unduplicated Cities</b>
<b>Domestic</b>			
<b>Passenger service (daily) information -</b>			
Air Carrier	190	10	--
Regional	234	13	--
Domestic Total	424	23	84
<b>Transborder/International</b>			
<b>Passenger service (weekly) information -</b>			
Air Carrier	28	2	--
Regional	69	3	--
Transborder/International Total	97	5	5

<b>April 2012:</b>	<b>Departures</b>	<b>Airlines*</b>	<b>Unduplicated Cities</b>
<b>Domestic</b>			
<b>Passenger service (daily) information -</b>			
Air Carrier	177	10	--
Regional	221	15	--
Domestic Total	398	25	77
<b>Transborder/International</b>			
<b>Passenger service (weekly) information -</b>			
Air Carrier	27	2	--
Regional	69	3	--
Transborder/International Total	96	5	4

\* The following airlines are counted as one airline:  
Southwest and AirTran for April 2013  
United and Continental for April 2012

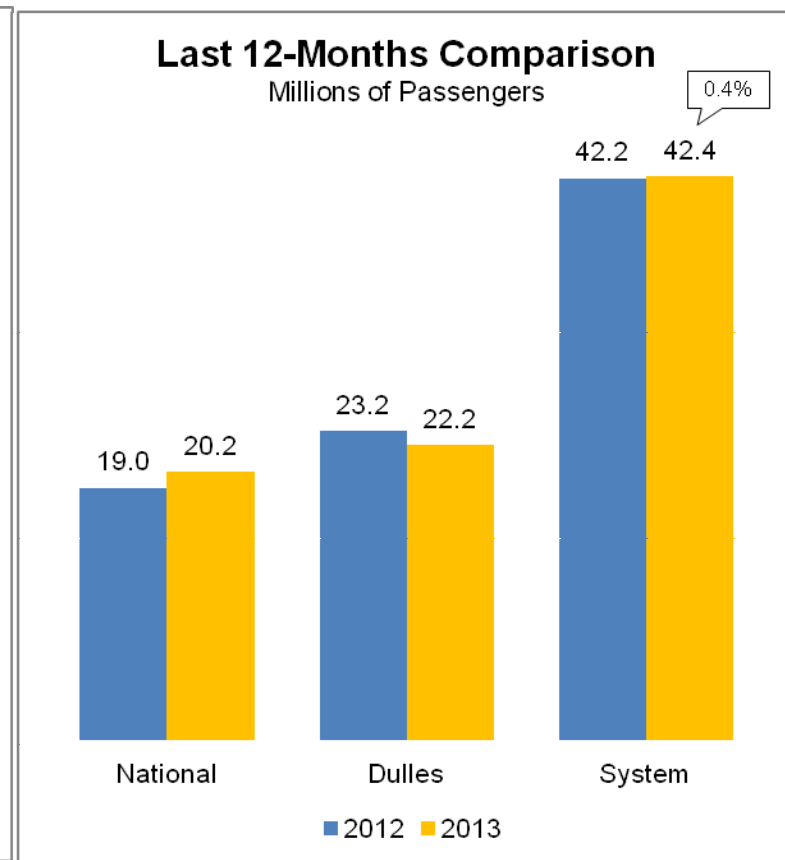
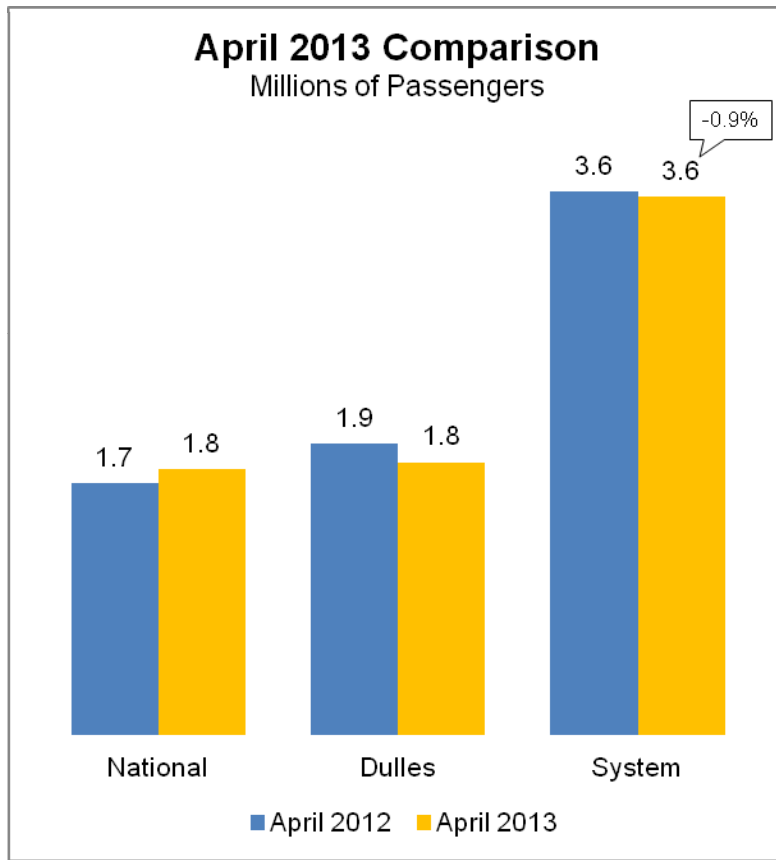
Washington Dulles International Airport  
SH&E Air Traffic Schedule Activity  
April 2013 vs. April 2012

<b>April 2013:</b>	<b>Departures</b>	<b>Airlines*</b>	<b>Unduplicated Cities</b>
<b>Domestic</b>			
<b>Passenger service (daily) information -</b>			
Air Carrier	94	6	--
Regional	221	17	--
Domestic Total	315	23	81
<b>Transborder/International</b>			
<b>Passenger service (weekly) information -</b>			
Air Carrier	350	23	--
Regional	102	5	--
Transborder/International Total	452	28	48

<b>April 2012:</b>	<b>Departures</b>	<b>Airlines*</b>	<b>Unduplicated Cities</b>
<b>Domestic</b>			
<b>Passenger service (daily) information -</b>			
Air Carrier	113	6	--
Regional	208	14	--
Domestic Total	321	20	81
<b>Transborder/International</b>			
<b>Passenger service (weekly) information -</b>			
Air Carrier	326	22	--
Regional	98	5	--
Transborder/International Total	424	27	47

\* The following airlines are counted as one airline:  
Austrian and Tyrolean  
Southwest and AirTran for April 2012  
United and Continental (mainline and express) for April 2012

# Passenger Trends

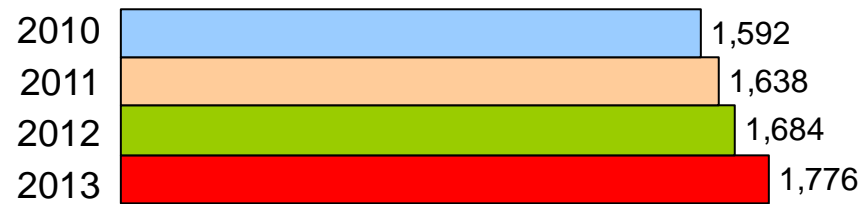


\* System totals may not sum due to rounding.

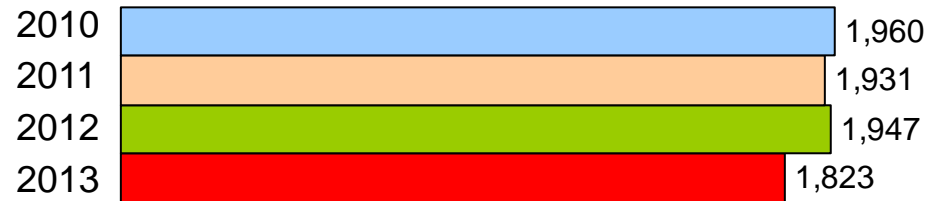


# Total Passengers Four Year Comparison of the Month of April (Thousands)

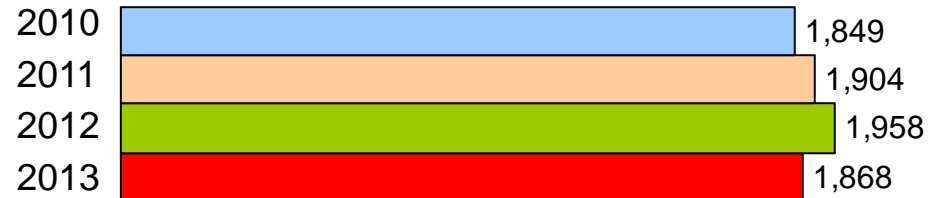
National



Dulles



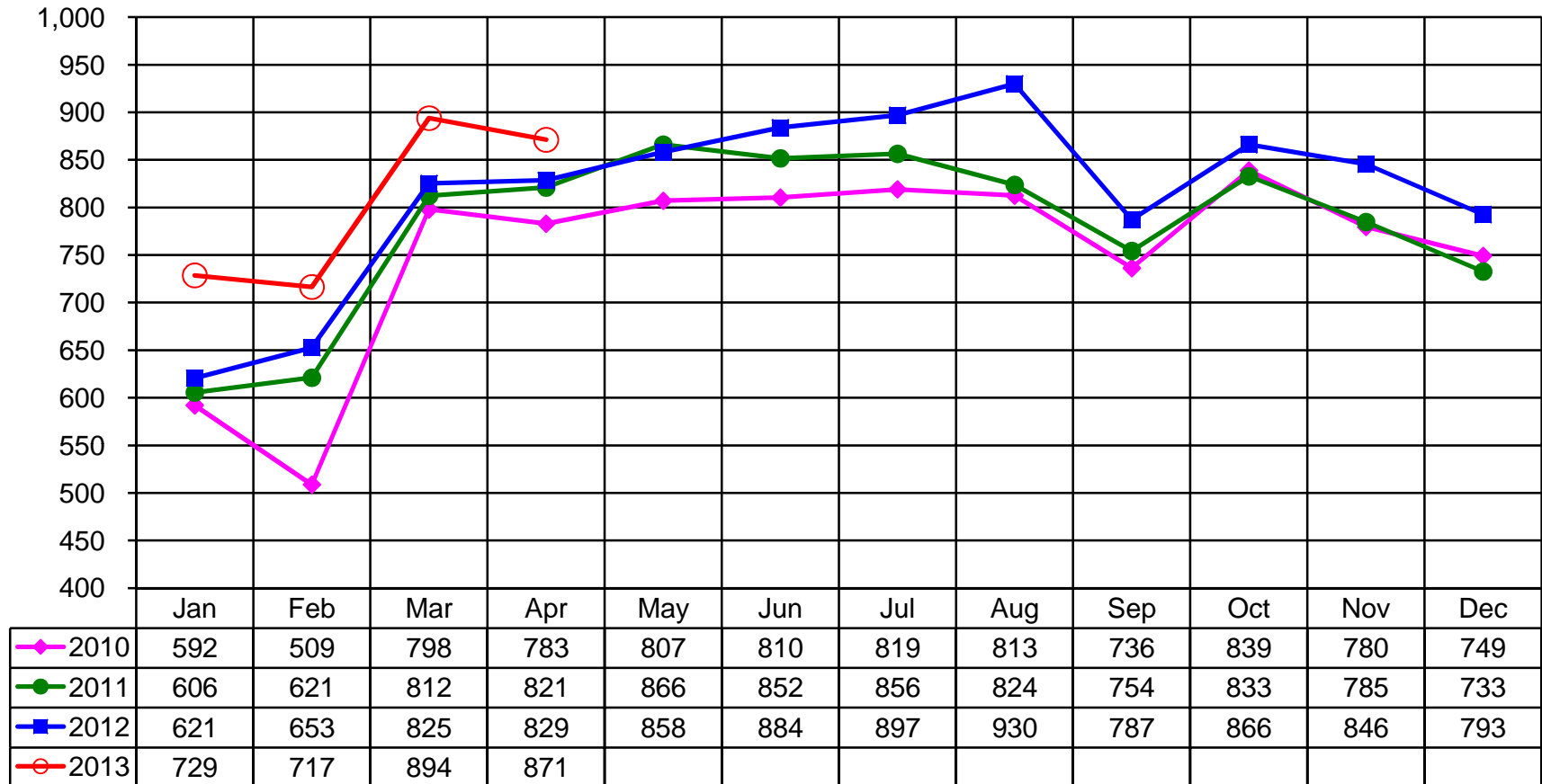
BWI



Internal Controls, Compliance & Financial Strategy

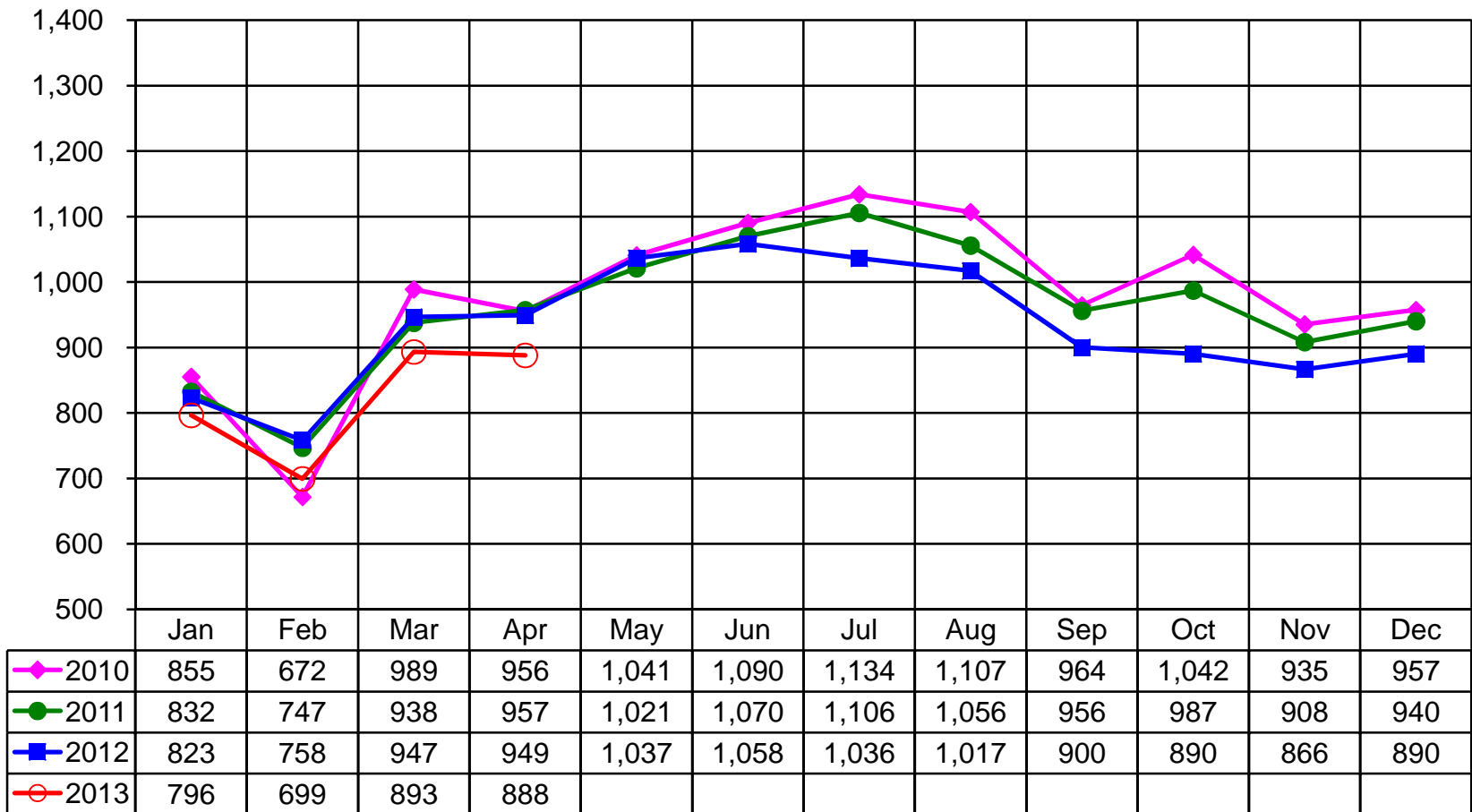
## Ronald Reagan Washington National Airport Total Commercial Passenger Enplanements Calendar Years 2010 - April 2013

Thousands



## Washington Dulles International Airport Total Commercial Passenger Enplanements Calendar Years 2010 - April 2013

Thousands



**Market Share and Percent Change of Top Airlines  
in the Washington and Baltimore Region**

**April 2013**

National	April 2013		
	Percent Change	Passengers	Market Share
<b>Top Airlines</b>			
1. US Airways	-1.7%	360,124	20.3%
2. Republic (US Airways Express)	40.6%	237,285	13.4%
3. American	7.9%	216,326	12.2%
4. Delta	-7.3%	206,048	11.6%
5. United + Continental	0.4%	130,931	7.4%
6. Air Wisconsin (US Airways Express)	13.6%	120,900	6.8%
7. JetBlue	112.3%	100,132	5.6%
8. Southwest + Airtran	13.0%	80,903	4.6%
9. PSA	56.2%	61,004	3.4%
10. Frontier	-35.0%	37,965	2.1%
11. All Other Airlines	16.3%	<u>224,159</u>	12.6%
<b>Total Passengers</b>	5.5%	<u>1,775,777</u>	100.0%

**April 2012**

National	April 2012		
	Passengers	Market Share	
<b>Top Airlines</b>			
1. US Airways	366,480	21.8%	
2. Delta	222,293	13.2%	
3. American	200,507	11.9%	
4. Republic (US Airways Express)	168,738	10.0%	
5. United + Continental	130,401	7.7%	
6. Air Wisconsin (US Airways Express)	106,416	6.3%	
7. Southwest + Airtran	71,608	4.3%	
8. Frontier	58,367	3.5%	
9. American Eagle	50,978	3.0%	
10. JetBlue	47,168	2.8%	
11. All Other Airlines	<u>260,625</u>	15.5%	
<b>Total Passengers</b>	<u>1,683,581</u>	100.0%	

Dulles	April 2013		
	Percent Change	Passengers	Market Share
<b>Top Airlines</b>			
1. United + Continental	-3.5%	757,628	41.6%
2. ExpressJet (United Express)	2.7%	166,389	9.1%
3. Mesa (United Express)	14.0%	84,821	4.7%
4. American	-10.5%	64,350	3.5%
5. Trans States (United Express)	24.1%	55,908	3.1%
6. Southwest + Airtran	-33.9%	45,036	2.5%
7. Shuttle America (United Express)	-23.3%	40,481	2.2%
8. Virgin America	-14.3%	36,652	2.0%
9. Commutair	N/A	36,488	2.0%
10. Lufthansa	14.6%	34,637	1.9%
11. All Other Airlines	-10.1%	<u>500,472</u>	27.5%
<b>Total Passengers</b>	-6.4%	<u>1,822,862</u>	100.0%

Dulles	April 2012		
	Passengers	Market Share	
<b>Top Airlines</b>			
1. United + Continental	784,928	40.3%	
2. ExpressJet (United Express)	162,027	8.3%	
3. Colgan Air (United Express)	114,530	5.9%	
4. Mesa (United Express)	74,376	3.8%	
5. American	71,901	3.7%	
6. JetBlue	70,143	3.6%	
7. Southwest + Airtran	68,178	3.5%	
8. Delta	53,036	2.7%	
9. Shuttle America (United Express)	52,748	2.7%	
10. Trans States (United Express)	45,050	2.3%	
11. All Other Airlines	<u>450,004</u>	23.1%	
<b>Total Passengers</b>	<u>1,946,921</u>	100.0%	

Baltimore	April 2013		
	Percent Change	Passengers	Market Share
<b>Top Airlines</b>			
1. Southwest	-5.2%	1,338,254	71.6%
2. Delta	-6.3%	149,951	8.0%
3. US Airways	-6.4%	88,865	4.8%
4. American	-27.4%	60,231	3.2%
5. United	9.3%	69,382	3.7%
6. Spirit	13.0%	28,982	1.6%
7. Jet Blue	19.0%	23,384	1.3%
8. Pinnacle (DL Connection)	12.9%	16,433	0.9%
9. American Eagle	-13.4%	12,092	0.6%
10. British Airways	1.4%	9,366	0.5%
11. All Other Airlines	14.1%	<u>71,469</u>	3.8%
<b>Total Passengers</b>	-4.6%	<u>1,868,409</u>	100.0%

Baltimore	April 2012		
	Passengers	Market Share	
<b>Top Airlines</b>			
1. Southwest	1,411,441	72.1%	
2. Delta	160,048	8.2%	
3. US Airways	94,893	4.8%	
4. United	82,923	4.2%	
5. American	63,459	3.2%	
6. JetBlue	25,639	1.3%	
7. Pinnacle (DL Connection)	19,644	1.0%	
8. American Eagle	14,551	0.7%	
9. United (ExpressJet)	13,964	0.7%	
10. British Airways	9,235	0.5%	
11. All Other Airlines	<u>62,614</u>	3.2%	
<b>Total Passengers</b>	<u>1,958,411</u>	100.0%	

**Market Share Summary**

	Apr 2013	Apr 2012
National	32%	30%
Dulles	33%	35%
Baltimore	34%	35%

**Metropolitan Washington Airports Authority**  
**Ronald Reagan Washington National Airport**  
**Monthly Air Traffic Summary Report**  
**April 2013**

<b>Description</b>	<b>Enplaned</b>	<b>Deplaned</b>	<b>Total</b>	<b>Year Ago</b>	<b>% Change</b>
<b>Aircraft Operations</b>					
Commercial:					
Air Carrier:					
Domestic			10,662	10,197	4.6
International			18	16	12.5
Transborder			219	206	6.3
<b>Total - Air Carrier</b>			<b>10,899</b>	<b>10,419</b>	<b>4.6</b>
Regional:					
Domestic			12,740	12,301	3.6
International			44	42	4.8
Transborder			530	519	2.1
<b>Total - Regional</b>			<b>13,314</b>	<b>12,862</b>	<b>3.5</b>
Commercial:					
Domestic			23,402	22,498	4.0
Transborder			811	783	3.6
<b>Total - Commercial</b>			<b>24,213</b>	<b>23,281</b>	<b>4.0</b>
Non-Commercial:					
General Aviation			501	587	- 14.7
Military			173	225	- 23.1
<b>Total - Non-Commercial</b>			<b>674</b>	<b>812</b>	<b>- 17.0</b>
<b>Grand Total - Aircraft Operations</b>			<b>24,887</b>	<b>24,093</b>	<b>3.3</b>
<b>Passengers</b>					
Commercial:					
Air Carrier Domestic:					
Scheduled	574,524	604,797	1,179,321	1,152,578	2.3
Chartered	0	0	0	0	0.0
<b>Total - Domestic Air Carrier</b>	<b>574,524</b>	<b>604,797</b>	<b>1,179,321</b>	<b>1,152,578</b>	<b>2.3</b>
Air Carrier International:					
Scheduled	957	947	1,904	2,355	- 19.2
Chartered	0	0	0	0	0.0
<b>Total - International Air Carrier</b>	<b>957</b>	<b>947</b>	<b>1,904</b>	<b>2,355</b>	<b>- 19.2</b>
Air Carrier Transborder:					
Scheduled	5,501	5,738	11,239	8,367	34.3
Chartered	0	0	0	0	0.0
<b>Total - Transborder Air Carrier</b>	<b>5,501</b>	<b>5,738</b>	<b>11,239</b>	<b>8,367</b>	<b>34.3</b>
<b>Total - Air Carrier</b>	<b>580,982</b>	<b>611,482</b>	<b>1,192,464</b>	<b>1,163,300</b>	<b>2.5</b>
Regional:					
Domestic	279,097	281,101	560,198	502,849	11.4
International	1,345	1,401	2,746	2,815	- 2.5
Transborder	9,776	8,544	18,320	12,292	49.0
<b>Total - Regional</b>	<b>290,218</b>	<b>291,046</b>	<b>581,264</b>	<b>517,956</b>	<b>12.2</b>
Commercial:					
Domestic	853,621	885,898	1,739,519	1,655,427	5.1
Transborder	17,579	16,630	34,209	25,829	32.4
<b>Total - Commercial</b>	<b>871,200</b>	<b>902,528</b>	<b>1,773,728</b>	<b>1,681,256</b>	<b>5.5</b>
Non-Commercial:					
General Aviation	622	602	1,224	1,435	- 14.7
Military	435	390	825	890	- 7.3
<b>Total - Non-Commercial</b>	<b>1,057</b>	<b>992</b>	<b>2,049</b>	<b>2,325</b>	<b>- 11.9</b>
<b>Grand Total - Passengers</b>	<b>872,257</b>	<b>903,520</b>	<b>1,775,777</b>	<b>1,683,581</b>	<b>5.5</b>

**Metropolitan Washington Airports Authority**  
**Ronald Reagan Washington National Airport**  
**Monthly Air Traffic Summary Report**  
**April 2013**

<b>Description</b>	<b>Enplaned</b>	<b>Deplaned</b>	<b>Total</b>	<b>Year Ago</b>	<b>% Change</b>
<b>Cargo - Tonnes</b>					
Mail:					
Domestic	0	0	0	0	- 100.0
International	0	0	0	0	0.0
Transborder	0	0	0	0	- 100.0
<b>Total - Mail:</b>	<b>0</b>	<b>0</b>	<b>0</b>	<b>0</b>	<b>- 100.0</b>
Freight + Express:					
Domestic	120	72	193	450	- 57.2
International	0	0	0	0	0.0
Transborder	0	0	0	0	100.0
<b>Total - Freight + Express:</b>	<b>121</b>	<b>72</b>	<b>193</b>	<b>450</b>	<b>- 57.2</b>
Mail Plus Freight + Express:					
Domestic	120	72	193	451	- 57.2
Transborder	0	0	0	0	29,900.0
<b>Grand Total - Cargo</b>	<b>121</b>	<b>72</b>	<b>193</b>	<b>451</b>	<b>- 57.2</b>

**NOTE:** Figures may not sum to total due to rounding.

**Metropolitan Washington Airports Authority**  
**Ronald Reagan Washington National Airport**  
**Monthly Air Traffic Summary Report**  
**May 2012 - April 2013**

<b>Description</b>	<b>Enplaned</b>	<b>Deplaned</b>	<b>Total</b>	<b>Year Ago</b>	<b>% Change</b>
<b>Aircraft Operations</b>					
Commercial:					
Air Carrier:					
Domestic			124,294	120,388	3.2
International			334	176	89.8
Transborder			2,630	2,595	1.3
<b>Total - Air Carrier</b>			<b>127,258</b>	<b>123,159</b>	<b>3.3</b>
Regional:					
Domestic			147,076	149,591	- 1.7
International			424	448	- 5.4
Transborder			8,059	3,826	110.6
<b>Total - Regional</b>			<b>155,559</b>	<b>153,865</b>	<b>1.1</b>
Commercial:					
Domestic			271,370	269,979	0.5
Transborder			11,447	7,045	62.5
<b>Total - Commercial</b>			<b>282,817</b>	<b>277,024</b>	<b>2.1</b>
Non-Commercial:					
General Aviation			6,260	5,738	9.1
Military			1,131	1,315	- 14.0
<b>Total - Non-Commercial</b>			<b>7,391</b>	<b>7,053</b>	<b>4.8</b>
<b>Grand Total - Aircraft Operations</b>			<b>290,208</b>	<b>284,077</b>	<b>2.2</b>
<b>Passengers</b>					
Commercial:					
Air Carrier Domestic:					
Scheduled	6,751,929	6,794,779	13,546,708	12,725,107	6.5
Chartered	0	0	0	0	0.0
<b>Total - Domestic Air Carrier</b>	<b>6,751,929</b>	<b>6,794,779</b>	<b>13,546,708</b>	<b>12,725,107</b>	<b>6.5</b>
Air Carrier International:					
Scheduled	16,719	16,563	33,282	21,178	57.2
Chartered	0	0	0	0	0.0
<b>Total - International Air Carrier</b>	<b>16,719</b>	<b>16,563</b>	<b>33,282</b>	<b>21,178</b>	<b>57.2</b>
Air Carrier Transborder:					
Scheduled	60,271	63,434	123,705	116,307	6.4
Chartered	0	0	0	0	0.0
<b>Total - Transborder Air Carrier</b>	<b>60,271</b>	<b>63,434</b>	<b>123,705</b>	<b>116,307</b>	<b>6.4</b>
<b>Total - Air Carrier</b>	<b>6,828,919</b>	<b>6,874,776</b>	<b>13,703,695</b>	<b>12,862,592</b>	<b>6.5</b>
Regional:					
Domestic	3,116,155	3,114,097	6,230,252	5,944,105	4.8
International	13,364	13,266	26,630	29,725	- 10.4
Transborder	112,902	107,371	220,273	102,330	115.3
<b>Total - Regional</b>	<b>3,242,421</b>	<b>3,234,734</b>	<b>6,477,155</b>	<b>6,076,160</b>	<b>6.6</b>
Commercial:					
Domestic	9,868,084	9,908,876	19,776,960	18,669,212	5.9
Transborder	203,256	200,634	403,890	269,540	49.8
<b>Total - Commercial</b>	<b>10,071,340</b>	<b>10,109,510</b>	<b>20,180,850</b>	<b>18,938,752</b>	<b>6.6</b>
Non-Commercial:					
General Aviation	6,562	6,366	12,928	11,517	12.3
Military	5,126	5,229	10,355	11,508	- 10.0
<b>Total - Non-Commercial</b>	<b>11,688</b>	<b>11,595</b>	<b>23,283</b>	<b>23,025</b>	<b>1.1</b>
<b>Grand Total - Passengers</b>	<b>10,083,028</b>	<b>10,121,105</b>	<b>20,204,133</b>	<b>18,961,777</b>	<b>6.6</b>

**Metropolitan Washington Airports Authority**  
**Ronald Reagan Washington National Airport**  
**Monthly Air Traffic Summary Report**  
**May 2012 - April 2013**

<b>Description</b>	<b>Enplaned</b>	<b>Deplaned</b>	<b>Total</b>	<b>Year Ago</b>	<b>% Change</b>
<b>Cargo - Tonnes</b>					
Mail:					
Domestic	4	2	6	3	86.0
International	0	0	0	0	0.0
Transborder	0	0	0	0	- 89.3
<b>Total - Mail:</b>	<b>5</b>	<b>2</b>	<b>6</b>	<b>4</b>	<b>75.4</b>
Freight + Express:					
Domestic	1,746	3,015	4,761	6,047	- 21.3
International	0	0	0	0	35.3
Transborder	1	0	1	0	100.0
<b>Total - Freight + Express:</b>	<b>1,747</b>	<b>3,015</b>	<b>4,762</b>	<b>6,047</b>	<b>- 21.3</b>
Mail Plus Freight + Express:					
Domestic	1,750	3,017	4,767	6,050	- 21.2
Transborder	1	0	1	0	429.6
<b>Grand Total - Cargo</b>	<b>1,751</b>	<b>3,017</b>	<b>4,768</b>	<b>6,051</b>	<b>- 21.2</b>

**NOTE:** Figures may not sum to total due to rounding.



**Metropolitan Washington Airports Authority**  
**Ronald Reagan Washington National Airport**  
**Monthly Air Traffic Summary Report**  
**January 2013 - April 2013**

<b>Description</b>	<b>Enplaned</b>	<b>Deplaned</b>	<b>Total</b>	<b>Year Ago</b>	<b>% Change</b>
<b>Aircraft Operations</b>					
Commercial:					
Air Carrier:					
Domestic			41,132	39,620	3.8
International			56	38	47.4
Transborder			835	827	1.0
<b>Total - Air Carrier</b>			<b>42,023</b>	<b>40,485</b>	<b>3.8</b>
Regional:					
Domestic			49,541	49,318	0.5
International			145	198	- 26.8
Transborder			2,420	1,479	63.6
<b>Total - Regional</b>			<b>52,106</b>	<b>50,995</b>	<b>2.2</b>
Commercial:					
Domestic			90,673	88,938	2.0
Transborder			3,456	2,542	36.0
<b>Total - Commercial</b>			<b>94,129</b>	<b>91,480</b>	<b>2.9</b>
Non-Commercial:					
General Aviation			2,088	2,269	- 8.0
Military			423	859	- 50.8
<b>Total - Non-Commercial</b>			<b>2,511</b>	<b>3,128</b>	<b>- 19.7</b>
<b>Grand Total - Aircraft Operations</b>			<b>96,640</b>	<b>94,608</b>	<b>2.1</b>
<b>Passengers</b>					
Commercial:					
Air Carrier Domestic:					
Scheduled	2,129,252	2,184,368	4,313,620	4,031,087	7.0
Chartered	0	0	0	0	0.0
<b>Total - Domestic Air Carrier</b>	<b>2,129,252</b>	<b>2,184,368</b>	<b>4,313,620</b>	<b>4,031,087</b>	<b>7.0</b>
Air Carrier International:					
Scheduled	3,715	3,156	6,871	5,004	37.3
Chartered	0	0	0	0	0.0
<b>Total - International Air Carrier</b>	<b>3,715</b>	<b>3,156</b>	<b>6,871</b>	<b>5,004</b>	<b>37.3</b>
Air Carrier Transborder:					
Scheduled	18,159	18,892	37,051	32,954	12.4
Chartered	0	0	0	0	0.0
<b>Total - Transborder Air Carrier</b>	<b>18,159</b>	<b>18,892</b>	<b>37,051</b>	<b>32,954</b>	<b>12.4</b>
<b>Total - Air Carrier</b>	<b>2,151,126</b>	<b>2,206,416</b>	<b>4,357,542</b>	<b>4,069,045</b>	<b>7.1</b>
Regional:					
Domestic	1,015,743	1,021,545	2,037,288	1,809,876	12.6
International	4,641	4,480	9,121	12,291	- 25.8
Transborder	38,907	35,416	74,323	36,425	104.0
<b>Total - Regional</b>	<b>1,059,291</b>	<b>1,061,441</b>	<b>2,120,732</b>	<b>1,858,592</b>	<b>14.1</b>
Commercial:					
Domestic	3,144,995	3,205,913	6,350,908	5,840,963	8.7
Transborder	65,422	61,944	127,366	86,674	46.9
<b>Total - Commercial</b>	<b>3,210,417</b>	<b>3,267,857</b>	<b>6,478,274</b>	<b>5,927,637</b>	<b>9.3</b>
Non-Commercial:					
General Aviation	2,125	2,060	4,185	4,483	- 6.6
Military	1,406	1,349	2,755	4,401	- 37.4
<b>Total - Non-Commercial</b>	<b>3,531</b>	<b>3,409</b>	<b>6,940</b>	<b>8,884</b>	<b>- 21.9</b>
<b>Grand Total - Passengers</b>	<b>3,213,948</b>	<b>3,271,266</b>	<b>6,485,214</b>	<b>5,936,521</b>	<b>9.2</b>

**Metropolitan Washington Airports Authority**  
**Ronald Reagan Washington National Airport**  
**Monthly Air Traffic Summary Report**  
**January 2013 - April 2013**

<b>Description</b>	<b>Enplaned</b>	<b>Deplaned</b>	<b>Total</b>	<b>Year Ago</b>	<b>% Change</b>
<b>Cargo - Tonnes</b>					
Mail:					
Domestic	0	0	0	1	- 60.3
International	0	0	0	0	0.0
Transborder	0	0	0	0	- 100.0
<b>Total - Mail:</b>	<b>0</b>	<b>0</b>	<b>0</b>	<b>1</b>	<b>- 60.4</b>
Freight + Express:					
Domestic	421	220	641	1,839	- 65.1
International	0	0	0	0	0.0
Transborder	0	0	1	0	100.0
<b>Total - Freight + Express:</b>	<b>422</b>	<b>220</b>	<b>642</b>	<b>1,839</b>	<b>- 65.1</b>
Mail Plus Freight + Express:					
Domestic	421	221	642	1,840	- 65.1
Transborder	0	0	1	0	74,900.0
<b>Grand Total - Cargo</b>	<b>422</b>	<b>221</b>	<b>643</b>	<b>1,840</b>	<b>- 65.1</b>

**NOTE:** Figures may not sum to total due to rounding.

**Metropolitan Washington Airports Authority**  
**Washington Dulles International Airport**  
**Monthly Air Traffic Summary Report**  
**April 2013**

<b>Description</b>	<b>Enplaned</b>	<b>Deplaned</b>	<b>Total</b>	<b>Year Ago</b>	<b>% Change</b>
<b>Aircraft Operations</b>					
Commercial:					
Air Carrier:					
Domestic			6,151	7,048	- 12.7
International			2,988	2,763	8.1
Transborder			0	0	0.0
<b>Total - Air Carrier</b>			<b>9,139</b>	<b>9,811</b>	<b>- 6.8</b>
Regional:					
Domestic			12,587	12,250	2.8
International			0	0	0.0
Transborder			880	769	14.4
<b>Total - Regional</b>			<b>13,467</b>	<b>13,019</b>	<b>3.4</b>
Commercial:					
Domestic			18,738	19,298	- 2.9
International			3,868	3,532	9.5
<b>Total - Commercial</b>			<b>22,606</b>	<b>22,830</b>	<b>- 1.0</b>
Non-Commercial:					
General Aviation			3,922	3,811	2.9
Military			83	47	76.6
<b>Total - Non-Commercial</b>			<b>4,005</b>	<b>3,858</b>	<b>3.8</b>
<b>Grand Total - Aircraft Operations</b>			<b>26,611</b>	<b>26,688</b>	<b>- 0.3</b>
<b>Passengers</b>					
Commercial:					
Air Carrier Domestic:					
Scheduled	367,532	380,552	748,084	856,764	- 12.7
Chartered	1,199	1,267	2,466	2,659	- 7.3
<b>Total - Domestic Air Carrier</b>	<b>368,731</b>	<b>381,819</b>	<b>750,550</b>	<b>859,423</b>	<b>- 12.7</b>
Air Carrier International:					
Scheduled	244,054	263,532	507,586	506,277	0.3
Chartered	541	474	1,015	1,037	- 2.1
<b>Total - International Air Carrier</b>	<b>244,595</b>	<b>264,006</b>	<b>508,601</b>	<b>507,314</b>	<b>0.3</b>
Air Carrier Transborder:					
Scheduled	0	0	0	0	0.0
Chartered	0	0	0	0	0.0
<b>Total - Transborder Air Carrier</b>	<b>0</b>	<b>0</b>	<b>0</b>	<b>0</b>	<b>0.0</b>
<b>Total - Air Carrier</b>	<b>613,326</b>	<b>645,825</b>	<b>1,259,151</b>	<b>1,366,737</b>	<b>- 7.9</b>
Regional:					
Domestic	257,734	256,169	513,903	534,096	- 3.8
International	0	0	0	0	0.0
Transborder	16,955	17,647	34,602	31,680	9.2
<b>Total - Regional</b>	<b>274,689</b>	<b>273,816</b>	<b>548,505</b>	<b>565,776</b>	<b>- 3.1</b>
Commercial:					
Domestic	626,465	637,988	1,264,453	1,393,519	- 9.3
International	261,550	281,653	543,203	538,994	0.8
<b>Total - Commercial</b>	<b>888,015</b>	<b>919,641</b>	<b>1,807,656</b>	<b>1,932,513</b>	<b>- 6.5</b>
Non-Commercial:					
General Aviation	7,416	7,551	14,967	14,335	4.4
Military	120	119	239	73	227.4
<b>Total - Non-Commercial</b>	<b>7,536</b>	<b>7,670</b>	<b>15,206</b>	<b>14,408</b>	<b>5.5</b>
<b>Grand Total - Passengers</b>	<b>895,551</b>	<b>927,311</b>	<b>1,822,862</b>	<b>1,946,921</b>	<b>- 6.4</b>

**Metropolitan Washington Airports Authority**  
**Washington Dulles International Airport**  
**Monthly Air Traffic Summary Report**  
**April 2013**

<b>Description</b>	<b>Enplaned</b>	<b>Deplaned</b>	<b>Total</b>	<b>Year Ago</b>	<b>% Change</b>
<b>Cargo - Tonnes</b>					
Mail:					
Domestic	162	270	432	277	55.7
International	240	79	319	338	- 5.5
<b>Total - Mail:</b>	<b>402</b>	<b>349</b>	<b>751</b>	<b>615</b>	<b>22.1</b>
Freight + Express:					
Domestic	3,800	3,903	7,704	8,493	- 9.3
International	4,823	7,969	12,792	12,381	3.3
<b>Total - Freight + Express:</b>	<b>8,624</b>	<b>11,872</b>	<b>20,496</b>	<b>20,874</b>	<b>- 1.8</b>
Mail Plus Freight + Express:					
Domestic	3,962	4,173	8,135	8,770	- 7.2
International	5,064	8,048	13,111	12,719	3.1
<b>Grand Total - Cargo</b>	<b>9,026</b>	<b>12,221</b>	<b>21,247</b>	<b>21,489</b>	<b>- 1.1</b>

**NOTE:** Figures may not sum to total due to rounding.

**Metropolitan Washington Airports Authority**  
**Washington Dulles International Airport**  
**Monthly Air Traffic Summary Report**  
**May 2012 - April 2013**

<b>Description</b>	<b>Enplaned</b>	<b>Deplaned</b>	<b>Total</b>	<b>Year Ago</b>	<b>% Change</b>
<b>Aircraft Operations</b>					
Commercial:					
Air Carrier:					
Domestic			76,129	86,814	- 12.3
International			34,489	34,081	1.2
Transborder			14	26	- 46.2
<b>Total - Air Carrier</b>			<b>110,632</b>	<b>120,921</b>	<b>- 8.5</b>
Regional:					
Domestic			142,215	148,699	- 4.4
International			0	0	0.0
Transborder			10,992	8,496	29.4
<b>Total - Regional</b>			<b>153,207</b>	<b>157,195</b>	<b>- 2.5</b>
Commercial:					
Domestic			218,344	235,513	- 7.3
International			45,495	42,603	6.8
<b>Total - Commercial</b>			<b>263,839</b>	<b>278,116</b>	<b>- 5.1</b>
Non-Commercial:					
General Aviation			41,943	45,196	- 7.2
Military			795	547	45.3
<b>Total - Non-Commercial</b>			<b>42,738</b>	<b>45,743</b>	<b>- 6.6</b>
<b>Grand Total - Aircraft Operations</b>			<b>306,577</b>	<b>323,859</b>	<b>- 5.3</b>
<b>Passengers</b>					
Commercial:					
Air Carrier Domestic:					
Scheduled	4,588,828	4,641,855	9,230,683	10,307,343	- 10.4
Chartered	9,426	9,678	19,104	23,743	- 19.5
<b>Total - Domestic Air Carrier</b>	<b>4,598,254</b>	<b>4,651,533</b>	<b>9,249,787</b>	<b>10,331,086</b>	<b>- 10.5</b>
Air Carrier International:					
Scheduled	3,139,797	3,181,944	6,321,741	6,203,456	1.9
Chartered	6,533	6,511	13,044	16,762	- 22.2
<b>Total - International Air Carrier</b>	<b>3,146,330</b>	<b>3,188,455</b>	<b>6,334,785</b>	<b>6,220,218</b>	<b>1.8</b>
Air Carrier Transborder:					
Scheduled	0	0	0	0	0.0
Chartered	299	228	527	374	40.9
<b>Total - Transborder Air Carrier</b>	<b>299</b>	<b>228</b>	<b>527</b>	<b>374</b>	<b>40.9</b>
<b>Total - Air Carrier</b>	<b>7,744,883</b>	<b>7,840,216</b>	<b>15,585,099</b>	<b>16,551,678</b>	<b>- 5.8</b>
Regional:					
Domestic	3,016,360	2,985,857	6,002,217	6,190,782	- 3.0
International	0	0	0	0	0.0
Transborder	211,084	218,167	429,251	341,382	25.7
<b>Total - Regional</b>	<b>3,227,444</b>	<b>3,204,024</b>	<b>6,431,468</b>	<b>6,532,164</b>	<b>- 1.5</b>
Commercial:					
Domestic	7,614,614	7,637,390	15,252,004	16,521,868	- 7.7
International	3,357,713	3,406,850	6,764,563	6,561,974	3.1
<b>Total - Commercial</b>	<b>10,972,327</b>	<b>11,044,240</b>	<b>22,016,567</b>	<b>23,083,842</b>	<b>- 4.6</b>
Non-Commercial:					
General Aviation	73,875	75,617	149,492	155,065	- 3.6
Military	364	373	737	1,386	- 46.8
<b>Total - Non-Commercial</b>	<b>74,239</b>	<b>75,990</b>	<b>150,229</b>	<b>156,451</b>	<b>- 4.0</b>
<b>Grand Total - Passengers</b>	<b>11,046,566</b>	<b>11,120,230</b>	<b>22,166,796</b>	<b>23,240,293</b>	<b>- 4.6</b>

**Metropolitan Washington Airports Authority**  
**Washington Dulles International Airport**  
**Monthly Air Traffic Summary Report**  
**May 2012 - April 2013**

<b>Description</b>	<b>Enplaned</b>	<b>Deplaned</b>	<b>Total</b>	<b>Year Ago</b>	<b>% Change</b>
<b>Cargo - Tonnes</b>					
Mail:					
Domestic	1,856	2,580	4,436	4,672	- 5.1
International	1,828	732	2,560	6,016	- 57.4
<b>Total - Mail:</b>	<b>3,684</b>	<b>3,313</b>	<b>6,997</b>	<b>10,688</b>	<b>- 34.5</b>
Freight + Express:					
Domestic	49,517	52,691	102,207	112,387	- 9.1
International	58,766	93,769	152,535	164,384	- 7.2
<b>Total - Freight + Express:</b>	<b>108,282</b>	<b>146,460</b>	<b>254,743</b>	<b>276,771</b>	<b>- 8.0</b>
Mail Plus Freight + Express:					
Domestic	51,372	55,271	106,643	117,060	- 8.9
International	60,594	94,502	155,096	170,399	- 9.0
<b>Grand Total - Cargo</b>	<b>111,966</b>	<b>149,773</b>	<b>261,739</b>	<b>287,459</b>	<b>- 8.9</b>

**NOTE:** Figures may not sum to total due to rounding.

**Metropolitan Washington Airports Authority**  
**Washington Dulles International Airport**  
**Monthly Air Traffic Summary Report**  
**January 2013 - April 2013**

<b>Description</b>	<b>Enplaned</b>	<b>Deplaned</b>	<b>Total</b>	<b>Year Ago</b>	<b>% Change</b>
<b>Aircraft Operations</b>					
Commercial:					
Air Carrier:					
Domestic			23,188	27,148	- 14.6
International			11,215	10,738	4.4
Transborder			7	22	- 68.2
<b>Total - Air Carrier</b>			<b>34,410</b>	<b>37,908</b>	<b>- 9.2</b>
Regional:					
Domestic			46,752	48,450	- 3.5
International			0	0	0.0
Transborder			3,222	2,964	8.7
<b>Total - Regional</b>			<b>49,974</b>	<b>51,414</b>	<b>- 2.8</b>
Commercial:					
Domestic			69,940	75,598	- 7.5
International			14,444	13,724	5.2
<b>Total - Commercial</b>			<b>84,384</b>	<b>89,322</b>	<b>- 5.5</b>
Non-Commercial:					
General Aviation			13,685	14,282	- 4.2
Military			271	229	18.3
<b>Total - Non-Commercial</b>			<b>13,956</b>	<b>14,511</b>	<b>- 3.8</b>
<b>Grand Total - Aircraft Operations</b>			<b>98,340</b>	<b>103,833</b>	<b>- 5.3</b>
<b>Passengers</b>					
Commercial:					
Air Carrier Domestic:					
Scheduled	1,357,785	1,380,804	2,738,589	3,109,226	- 11.9
Chartered	3,092	3,277	6,369	6,405	- 0.6
<b>Total - Domestic Air Carrier</b>	<b>1,360,877</b>	<b>1,384,081</b>	<b>2,744,958</b>	<b>3,115,631</b>	<b>- 11.9</b>
Air Carrier International:					
Scheduled	914,741	965,895	1,880,636	1,810,322	3.9
Chartered	2,218	2,205	4,423	4,252	4.0
<b>Total - International Air Carrier</b>	<b>916,959</b>	<b>968,100</b>	<b>1,885,059</b>	<b>1,814,574</b>	<b>3.9</b>
Air Carrier Transborder:					
Scheduled	0	0	0	0	0.0
Chartered	35	70	105	374	- 71.9
<b>Total - Transborder Air Carrier</b>	<b>35</b>	<b>70</b>	<b>105</b>	<b>374</b>	<b>- 71.9</b>
<b>Total - Air Carrier</b>	<b>2,277,871</b>	<b>2,352,251</b>	<b>4,630,122</b>	<b>4,930,579</b>	<b>- 6.1</b>
Regional:					
Domestic	935,447	928,501	1,863,948	1,974,533	- 5.6
International	0	0	0	0	0.0
Transborder	63,755	63,830	127,585	108,081	18.0
<b>Total - Regional</b>	<b>999,202</b>	<b>992,331</b>	<b>1,991,533</b>	<b>2,082,614</b>	<b>- 4.4</b>
Commercial:					
Domestic	2,296,324	2,312,582	4,608,906	5,090,164	- 9.5
International	980,749	1,032,000	2,012,749	1,923,029	4.7
<b>Total - Commercial</b>	<b>3,277,073</b>	<b>3,344,582</b>	<b>6,621,655</b>	<b>7,013,193</b>	<b>- 5.6</b>
Non-Commercial:					
General Aviation	24,793	24,646	49,439	52,752	- 6.3
Military	220	221	441	315	40.0
<b>Total - Non-Commercial</b>	<b>25,013</b>	<b>24,867</b>	<b>49,880</b>	<b>53,067</b>	<b>- 6.0</b>
<b>Grand Total - Passengers</b>	<b>3,302,086</b>	<b>3,369,449</b>	<b>6,671,535</b>	<b>7,066,260</b>	<b>- 5.6</b>

**Metropolitan Washington Airports Authority**  
**Washington Dulles International Airport**  
**Monthly Air Traffic Summary Report**  
**January 2013 - April 2013**

<b>Description</b>	<b>Enplaned</b>	<b>Deplaned</b>	<b>Total</b>	<b>Year Ago</b>	<b>% Change</b>
<b>Cargo - Tonnes</b>					
Mail:					
Domestic	684	991	1,675	1,671	0.2
International	264	110	374	1,442	- 74.0
<b>Total - Mail:</b>	<b>948</b>	<b>1,102</b>	<b>2,050</b>	<b>3,113</b>	<b>- 34.2</b>
Freight + Express:					
Domestic	15,285	16,321	31,606	36,058	- 12.3
International	19,529	30,338	49,867	50,488	- 1.2
<b>Total - Freight + Express:</b>	<b>34,814</b>	<b>46,659</b>	<b>81,473</b>	<b>86,546</b>	<b>- 5.9</b>
Mail Plus Freight + Express:					
Domestic	15,969	17,312	33,281	37,729	- 11.8
International	19,793	30,448	50,241	51,930	- 3.3
<b>Grand Total - Cargo</b>	<b>35,762</b>	<b>47,760</b>	<b>83,523</b>	<b>89,659</b>	<b>- 6.8</b>

**NOTE:** Figures may not sum to total due to rounding.



**Ronald Reagan Washington National Airport**  
**Total Passengers by Airline**  
**April 2012 vs. April 2013**

		April 2012	April 2013	% Change
Mainline	US Airways	366,480	360,124	-1.7%
	American	200,507	216,326	7.9%
	Delta	222,293	206,048	-7.3%
	JetBlue	47,168	100,132	112.3%
	United	82,753	90,883	9.8%
	AirTran	71,608	56,854	-20.6%
	Continental	47,648	40,048	-16.0%
	Frontier	58,367	37,965	-35.0%
	Alaska	26,476	35,132	32.7%
	Southwest	0	24,049	
	Air Canada	8,367	11,239	34.3%
	Virgin America	0	7,215	
	MN Airlines	6,875	6,449	-6.2%
	Spirit	24,758	0	-100.0%
<b>Mainline Total</b>		<b>1,163,300</b>	<b>1,192,464</b>	<b>2.5%</b>
Regional	Republic (US Airways Express)	168,738	237,285	40.6%
	Air Wisconsin (US Airways Express)	106,416	120,900	13.6%
	PSA	39,047	61,004	56.2%
	American Eagle	50,978	37,053	-27.3%
	Pinnacle (Delta Connection)	30,618	30,702	0.3%
	Chautauqua (US Airways Express)	24,280	23,203	-4.4%
	Shuttle America (Delta Connection)	28,543	23,067	-19.2%
	ExpressJet (United Express)	15,138	11,485	-24.1%
	Shuttle America (United Express)	8,649	9,047	4.6%
	Piedmont	4,348	8,854	103.6%
	Chautauqua (Continental Express)	2,458	8,726	255.0%
	Air Canada Jazz	8,739	7,385	-15.5%
	ExpressJet (Delta Connection)	0	2,553	
	Colgan Air (Continental Connection)	6,331	0	-100.0%
	ASA (Delta Connection)	3,092	0	-100.0%
	SkyWest (Continental Connection)	1,716	0	-100.0%
	Comair (Delta Connection)	17,672	0	-100.0%
	Compass (Delta Connection)	1,193	0	-100.0%
	<b>Regional Total</b>		<b>517,956</b>	<b>581,264</b>
GA	Signature	1,435	1,224	-14.7%
<b>GA Total</b>		<b>1,435</b>	<b>1,224</b>	<b>-14.7%</b>
Military	U.S.	890	825	-7.3%
<b>Military Total</b>		<b>890</b>	<b>825</b>	<b>-7.3%</b>
<b>Grand Total</b>		<b>1,683,581</b>	<b>1,775,777</b>	<b>5.5%</b>

**Ronald Reagan Washington National Airport**  
**Total Passengers by Airline**  
**April 2012 vs. April 2013**

	April 2012	April 2013	Difference	Percent Change
US Airways + US Express				
Domestic				
US Express	336,461	437,565	101,104	30.0%
US Airways	364,125	358,220	(5,905)	-1.6%
Domestic Total	700,586	795,785	95,199	13.6%
Transborder / International				
US Express	6,368	13,681	7,313	114.8%
US Airways	2,355	1,904	(451)	-19.2%
Transborder / International Total	8,723	15,585	6,862	78.7%
<b>US Airways + US Express Total</b>	<b>709,309</b>	<b>811,370</b>	<b>102,061</b>	<b>14.4%</b>
Delta + Delta Connection				
Delta	222,293	206,048	(16,245)	-7.3%
Delta Connection	81,118	56,322	(24,796)	-30.6%
<b>Delta + Delta Connection Total</b>	<b>303,411</b>	<b>262,370</b>	<b>(41,041)</b>	<b>-13.5%</b>
American + American Eagle				
American	200,507	216,326	15,819	7.9%
American Eagle	50,978	37,053	(13,925)	-27.3%
<b>American + American Eagle Total</b>	<b>251,485</b>	<b>253,379</b>	<b>1,894</b>	<b>0.8%</b>
United + Continental + Express				
United + Continental	130,401	130,931	530	0.4%
UA Express + CO Express	34,292	29,258	(5,034)	-14.7%
<b>United + Continental + Express Total</b>	<b>164,693</b>	<b>160,189</b>	<b>(4,504)</b>	<b>-2.7%</b>
JetBlue	47,168	100,132	52,964	112.3%
Southwest + AirTran	71,608	80,903	9,295	13.0%
Frontier	58,367	37,965	(20,402)	-35.0%
Alaska	26,476	35,132	8,656	32.7%
Air Canada + Air Canada Jazz	17,106	18,624	1,518	8.9%
Virgin America	-	7,215	7,215	
Sun Country	6,875	6,449	(426)	-6.2%
Spirit	24,758	-	(24,758)	-100.0%

**Washington Dulles International Airport  
Total Passengers by Airline  
April 2012 vs. April 2013**

		<u>April 2012</u>	<u>April 2013</u>	<u>% Change</u>
Mainline	United	698,864	757,628	8.4%
	American	71,901	64,350	-10.5%
	Southwest	53,650	45,036	-16.1%
	Virgin America	42,786	36,652	-14.3%
	Lufthansa	30,215	34,637	14.6%
	JetBlue	70,143	33,887	-51.7%
	Delta	53,036	33,645	-36.6%
	British Airways	37,066	30,407	-18.0%
	Air France	27,332	28,539	4.4%
	TACA International	15,145	16,835	11.2%
	KLM Royal Dutch	13,863	13,614	-1.8%
	Qatar Amiri Air	16,428	13,088	-20.3%
	Emirates	0	12,928	
	Korean Air	13,433	12,832	-4.5%
	Turkish Airlines	11,570	12,773	10.4%
	Ethiopian Airlines	9,461	11,626	22.9%
	South African	11,342	11,082	-2.3%
	Virgin Atlantic	14,714	10,971	-25.4%
	SAS	12,929	10,912	-15.6%
	All Nippon	11,534	10,744	-6.8%
	Austrian	11,914	10,134	-14.9%
	COPA	6,133	9,590	56.4%
	Etihad	0	8,237	
	Saudi Arabian	7,681	7,729	0.6%
	Avianca	6,020	5,771	-4.1%
	Aeromexico	0	4,556	
	Icelandair	4,861	4,417	-9.1%
	Aeroflot	1,315	2,928	122.7%
	MN Airlines	1,616	968	-40.1%
	Sun Air International	0	536	
	Cayman	459	122	-73.4%
	US Airways	54	0	-100.0%
	Continental	86,064	0	-100.0%
	AirTran	14,528	0	-100.0%
	Aer Lingus	8,600	0	-100.0%
<b>Mainline Total</b>		<b>1,364,657</b>	<b>1,257,174</b>	<b>-7.9%</b>
Regional	ExpressJet (United Express)	162,027	166,389	2.7%
	Mesa (United Express)	74,376	84,821	14.0%
	Trans States (United Express)	45,050	55,908	24.1%
	Shuttle America (United Express)	52,748	40,481	-23.3%
	Commutair	0	36,488	
	Republic (United Express)	0	32,392	
	GoJet (United Express)	22,451	22,066	-1.7%
	SkyWest (United Express)	18,658	21,073	12.9%
	Pinnacle (Delta Connection)	18,526	18,459	-0.4%
	Mesa (US Airways Express)	18,178	17,670	-2.8%
	Compass (Delta Connection)	14,082	11,125	-21.0%
	PSA	1,939	10,812	457.6%
	Chautauqua (Delta Connection)	9,149	8,840	-3.4%
	Silver (United Express)	0	8,708	
	ExpressJet (Delta Connection)	2,706	6,784	150.7%
	Porter	2,519	4,804	90.7%
	Air Wisconsin (US Airways Express)	2,800	676	-75.9%
	Republic (US Airways Express)	0	252	
	Chautauqua (United Express)	0	174	
	GoJet (Delta Connection)	0	47	
	Colgan Air (United Express)	114,530	0	-100.0%
	Comair (Delta Connection)	6,037	0	-100.0%
<b>Regional Total</b>		<b>565,776</b>	<b>547,969</b>	<b>-3.1%</b>
Charter	Other Charters	1,043	1,202	15.2%
	North American	0	1,015	
	Republic Airways Caesar	0	296	
	Vision	1,037	0	-100.0%
<b>Charter Total</b>		<b>2,080</b>	<b>2,513</b>	<b>20.8%</b>
GA	Signature	12,317	12,867	4.5%
	Landmark Aviation	2,018	2,100	4.1%
<b>GA Total</b>		<b>14,335</b>	<b>14,967</b>	<b>4.4%</b>
Military	GAF	73	239	227.4%
<b>Military Total</b>		<b>73</b>	<b>239</b>	<b>227.4%</b>
<b>Grand Total</b>		<b>1,946,921</b>	<b>1,822,862</b>	<b>-6.4%</b>

**Washington Dulles International Airport**  
**Total Passengers by Airline**  
**April 2012 vs. April 2013**

	April 2012	April 2013	Difference	Percent Change
<b>United + Continental + Express</b>				
Domestic				
United + Continental	550,877	534,554	(16,323)	-3.0%
UA Express + CO Express	460,679	438,725	(21,954)	-4.8%
Domestic Total	1,011,556	973,279	(38,277)	-3.8%
Transborder / International				
United + Continental	234,051	223,074	(10,977)	-4.7%
UA Express + CO Express	29,161	29,775	614	2.1%
Transborder / International Total	263,212	252,849	(10,363)	-3.9%
<b>United + Continental + Express Total</b>	<b>1,274,768</b>	<b>1,226,128</b>	<b>(48,640)</b>	<b>-3.8%</b>
<b>Delta + Delta Connection</b>				
Domestic				
Delta Connection	50,500	45,255	(5,245)	-10.4%
Delta	52,825	33,605	(19,220)	-36.4%
Domestic Total	103,325	78,860	(24,465)	-23.7%
Transborder / International				
Delta	211	40	(171)	-81.0%
Transborder / International Total	211	40	(171)	-81.0%
<b>Delta + Delta Connection Total</b>	<b>103,536</b>	<b>78,900</b>	<b>(24,636)</b>	<b>-23.8%</b>
American + American Eagle	71,901	64,350	(7,551)	-10.5%
Southwest + AirTran	68,178	45,036	(23,142)	-33.9%
Virgin America	42,786	36,652	(6,134)	-14.3%
Lufthansa	30,215	34,637	4,422	14.6%
JetBlue	70,143	33,887	(36,256)	-51.7%
British Airways	37,066	30,407	(6,659)	-18.0%
US Airways + US Express	22,971	29,410	6,439	28.0%
Air France	27,332	28,539	1,207	4.4%
TACA	15,145	16,835	1,690	11.2%
KLM Royal Dutch	13,863	13,614	(249)	-1.8%
Qatar Amiri Air	16,428	13,088	(3,340)	-20.3%
Emirates	-	12,928	12,928	
Korean Air	13,433	12,832	(601)	-4.5%
Turkish	11,570	12,773	1,203	10.4%
Ethiopian	9,461	11,626	2,165	22.9%
South African	11,342	11,082	(260)	-2.3%
Virgin Atlantic	14,714	10,971	(3,743)	-25.4%
SAS	12,929	10,912	(2,017)	-15.6%
All Nippon	11,534	10,744	(790)	-6.8%
Austrian	11,914	10,134	(1,780)	-14.9%
COPA	6,133	9,590	3,457	56.4%
Etihad	-	8,237	8,237	
Saudi Arabian	7,681	7,729	48	0.6%
Avianca	6,020	5,771	(249)	-4.1%
Porter	2,519	4,804	2,285	90.7%
Aeromexico	-	4,556	4,556	
Icelandair	4,861	4,417	(444)	-9.1%
Aeroflot	1,315	2,928	1,613	122.7%
Sun Country	1,616	968	(648)	-40.1%
Sun Air International	-	536	536	
Cayman	459	122	(337)	-73.4%
Aer Lingus	8,600	-	(8,600)	-100.0%