



TWENTIETH ANNUAL BUSINESS OPPORTUNITY SEMINAR

Construction Session

December 9, 2011



TWENTIETH ANNUAL BUSINESS OPPORTUNITY SEMINAR

Local Disadvantaged Business Enterprise/Disadvantaged Business Enterprise Programs

Cynthia Lipscomb
Assistant Manager, Compliance
Equal Opportunity Programs
Metropolitan Washington Airports Authority



TWENTIETH ANNUAL BUSINESS OPPORTUNITY SEMINAR

Capital Operating Maintenance & Investment Program Operations and Maintenance Program

Zachary Coleman
Manager, Airport Facilities Engineering
Engineering & Maintenance (National)
Metropolitan Washington Airports Authority



REHABILITATION OF SANITARY FORCE MAIN

THIRD QUARTER 2012

Provide Slip-Lining rehabilitation on the existing 16-inch sanitary force main.





SOUTH SEWER PUMP HOUSE REHABILITATION

FOURTH QUARTER 2012

Rehabilitation of the South Sewer Pump House (SSPH). Expand wet well capacity and replace pumps and motors in the existing pump house.

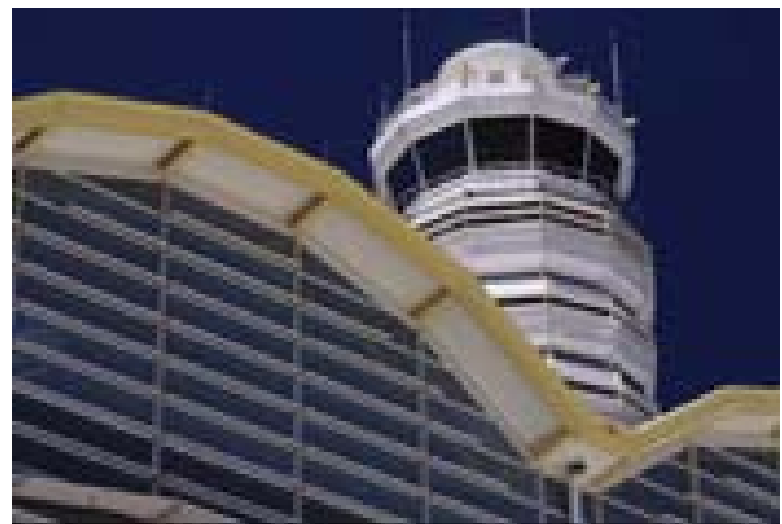




TERMINAL B/C CORROSION PREVENTION

SECOND QUARTER 2012

**Provide corrosion prevention
measures for metal components of
Terminal B/C including painting of
the exterior “Eyebrows” and
exterior stairwells on gates.**





TERMINAL B/C FREIGHT ELEVATORS

SECOND QUARTER 2012

Replace existing passenger elevators on the loading dock at Terminals B & C with freight cabs.





TERMINAL B/C ELEVATOR DOORS

THIRD QUARTER 2012

Replace elevator cab doors on existing elevators in Terminal B/C.





TWENTIETH ANNUAL BUSINESS OPPORTUNITY SEMINAR

Capital Operating Maintenance & Investment Program Operations and Maintenance Program

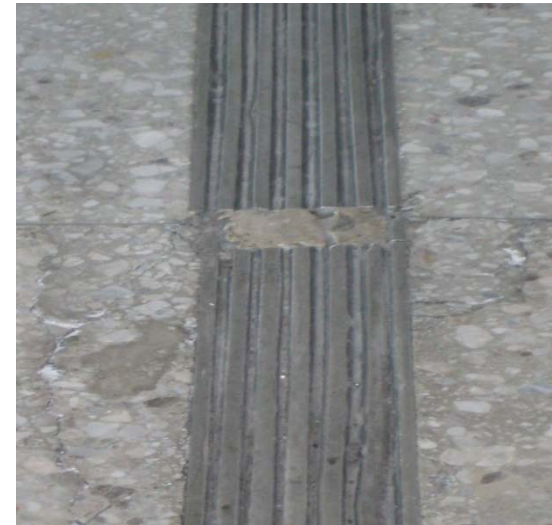
Mark Waslo
Deputy Manager
Engineering & Maintenance (Dulles)
Metropolitan Washington Airports Authority



EXPANSION JOINTS & TERRAZZO REPLACEMENT, PHASE II, MAIN TERMINAL

SECOND QUARTER 2012

**Replace failing expansion joint
material and terrazzo flooring in
the Main Terminal Ticketing Level.**





TERRAZZO REPLACEMENT – LANDSIDE WALKBACK TUNNEL

SECOND QUARTER 2012

Repair and replace cracked/failed terrazzo in the landside walk-back tunnel between the Main Terminal and Daily Garage 1





AIRFIELD STORM DRAINAGE INLET PIPE REHABILITATION AND EROSION CONTROL, PHASE IV

SECOND QUARTER 2012

**Rehabilitate and seal portions of
the underground airfield
stormwater drainage system.
Repair concrete inlets and
erosion problems around
various storm drainage inlets
and structures.**





REROOF BUILDINGS

THIRD QUARTER 2012

Replace deteriorated roofing at the JP Morgan Chase Building.





GUARDRAIL MAINTENANCE AND REHABILITATION, DULLES AIRPORT ACCESS HIGHWAY

THIRD QUARTER 2012

Rehabilitation or replacement of guardrail on the DIAAH including upgrading sub-standard guardrail and replacing rusted and weathered guardrail on overpasses and bridge abutments.





HVAC IMPROVEMENT TO SHOP 1 AND VEHICLE BODY SHOP

THIRD QUARTER 2012

**Install new air handling unit with
energy recovery and new chilled
water piping that will tie-in to
the central cooling plant.**





ZONE SIGNS – GREENWAY RAMP E

THIRD QUARTER 2012

Install four large Zone Signs on the new ramp leading from the Dulles Greenway into the airport.





CULVERT REPLACEMENT ON VORTAC LANE

THIRD QUARTER 2012

Replace the existing culverts with a large box culvert under Vortac Lane.





DULLES EAST BUILDING REHABILITATION PHASE 1

THIRD QUARTER 2012

**Upgrade life-safety systems
issues, address ADA
compliance requirements and
rehabilitation to the mechanical
systems.**





JP MORGAN CHASE BUILDING – HVAC SYSTEM CONNECTION ENERGY MANAGEMENT CONTROL SYSTEM

THIRD QUARTER 2012

**Establish an EMCS connection
to the mechanical room and
major mechanical equipment
(air handlers, chillers, boilers,
etc) serving the JP Morgan
Chase Building.**





CARPET REPLACEMENT

THIRD QUARTER 2012

Replace the carpet in Temporary Mobile Lounge Docks at the Main Terminal, Mobile Lounge Docks in Concourses A & B, Jet Bridges in Concourses A & B, and grey wall carpet in Plane-Mates.





PLANE-MATE LIFT CONTROLLER SYSTEM UPGRADE PHASE II

THIRD QUARTER 2012

**Replace obsolete electronic
passenger pod and electronic
controllers on Plane-Mates.
Phase II will consist of the rehab
of 10 Plane-Mate units.**





ROOF TOP UNIT (RTU) REPLACEMENT PROGRAM

THIRD QUARTER 2012

Replace old/damaged RTUs on approximately seven buildings airport-wide





TWENTIETH ANNUAL BUSINESS OPPORTUNITY SEMINAR

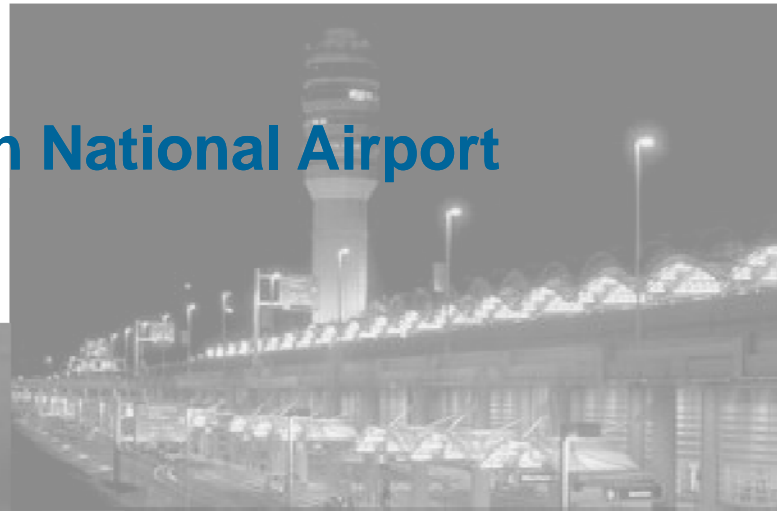
Capital Construction Program

Diane Hirsch
Manager, Design Department
Office of Engineering
Metropolitan Washington Airports Authority



CAPITAL CONSTRUCTION PROGRAM

Ronald Reagan Washington National Airport



Washington Dulles International Airport



CAPITAL CONSTRUCTION PROGRAM

2011: \$164 Million in Design and Construction Contracts



2012: \$237 Million in Design and Construction Contracts





CAPITAL CONSTRUCTION PROGRAM



Ronald Reagan Washington National Airport





TERMINAL A – NEW SECURITY SCREENING CHECKPOINT

THIRD QUARTER 2012

Construct a new building addition to relocate the security screening checkpoint.

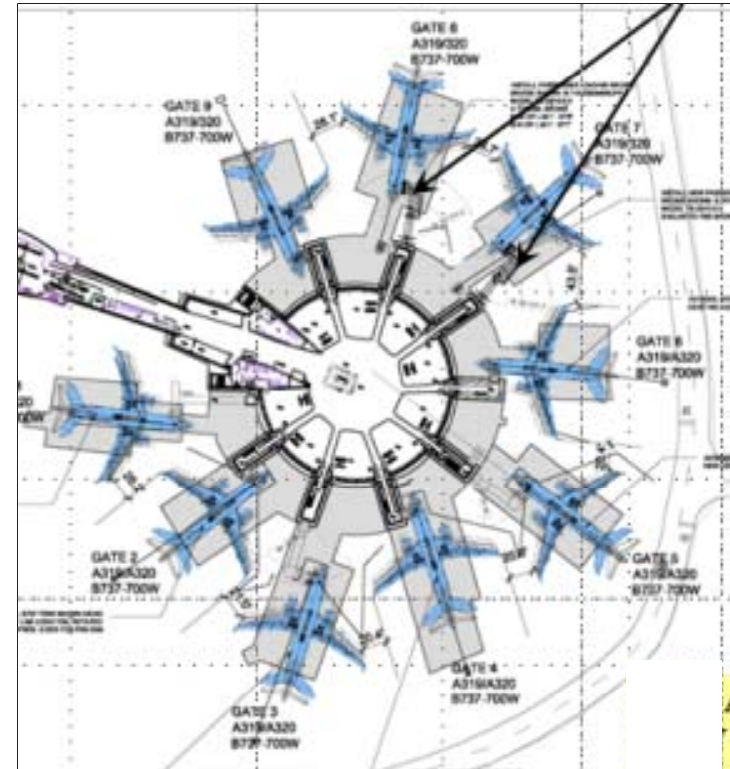




NEW LOADING BRIDGE AT GATE 8

THIRD QUARTER 2012

Project involves installing a new apron-drive passenger loading bridge at Gate 8, removal of the old fixed bridge, patching the existing structure and concrete pad work for aircraft parking.

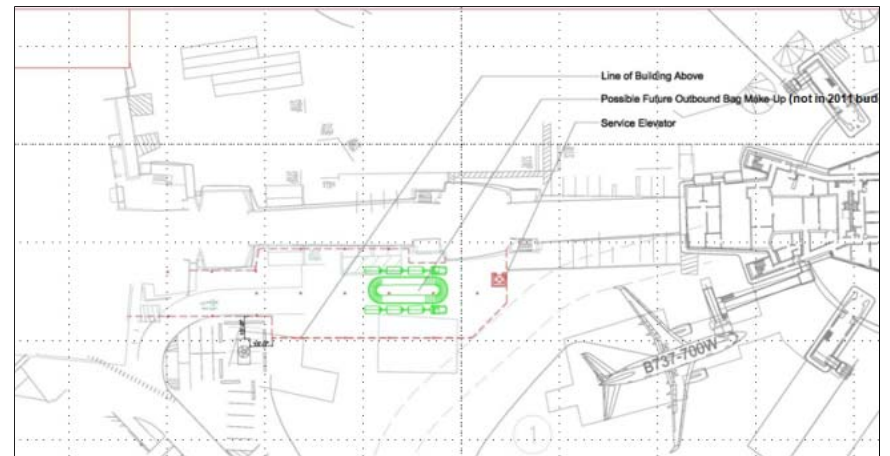




OUTBOUND BAGGAGE MAKEUP FACILITY

THIRD QUARTER 2012

Project involves developing a new baggage makeup area to address increasing Terminal A activity levels.

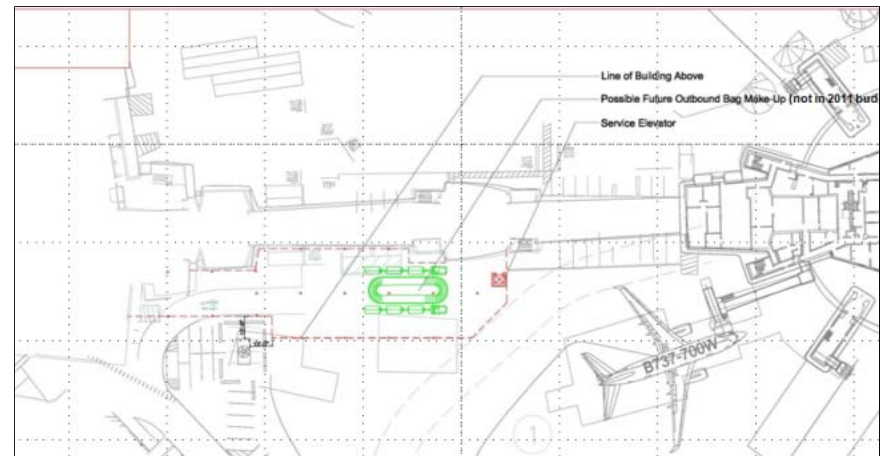




INBOUND BAGGAGE MAKEUP FACILITY

THIRD QUARTER 2012

Project involves developing a new inbound baggage makeup area to address near term capacity issues related to impacts of US - DL Slot Swap.

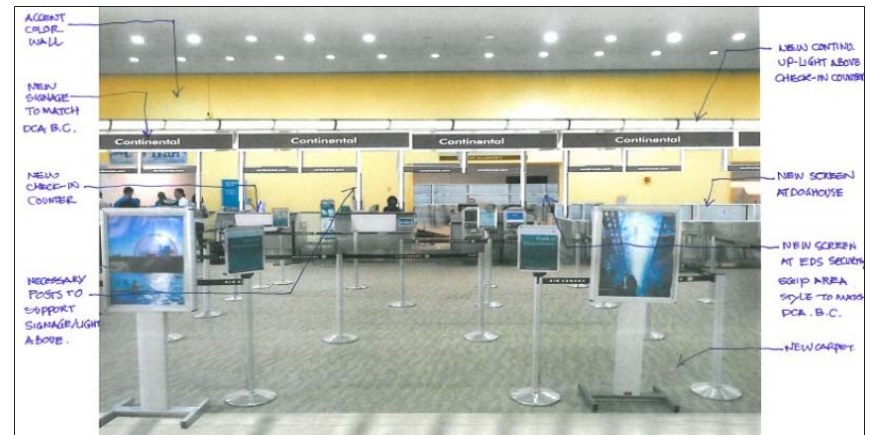




TERMINAL A LOBBY IMPROVEMENTS

THIRD QUARTER 2012

Project involves ticket lobby improvements to address capacity, lighting and general finish upgrades to enhanced the appearance of the facility.





DCA NORTH SUBSTATION GEAR REPLACEMENT

FIRST QUARTER 2012

Replace obsolete 34.5 kV, 5 kV and 480 volt Switchgear in the North Substation serving the COB, Terminal B/C, Garage B/C, Hangar 11/12 and the North Airfield.

This will improve the reliability, efficiency and stability of the main switchgear that serves the North Campus.





RIVER RESCUE SUPPORT FACILITY

FIRST QUARTER 2012

Construct a new river rescue support facility with associated site work development for rescue boat operations. The new floating facility and ramp is to be located on the east side of the airport. Work includes demolition of the existing river rescue support facility on the northeast side of the airport.





COB FULL BACKUP POWER

SECOND QUARTER 2012

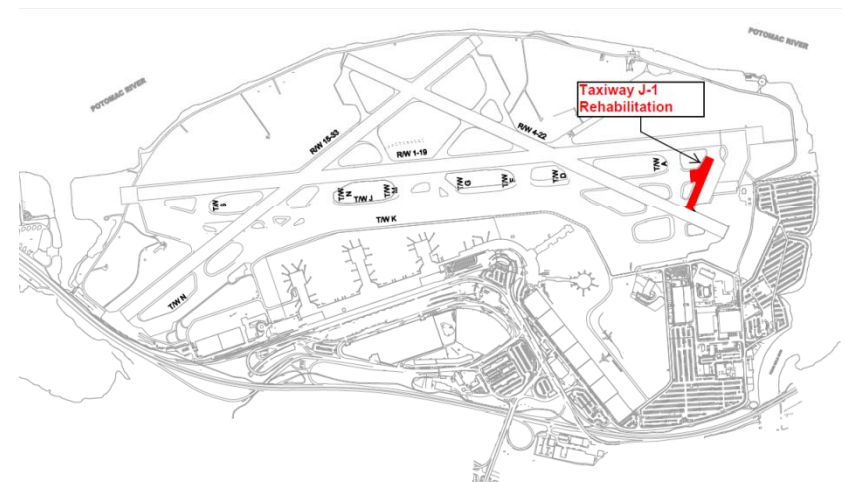
Provide for full backup power for the Corporate Office Building. This project will ensure full business continuity of the COB.



TAXIWAY C REHABILITATION

FIRST QUARTER 2012

This project will rehabilitate Taxiway C pavement for the full length between the east side of Taxiway J and Runway 4. Repairs will consist of partial and full depth bituminous repairs and linear patches.





**TERMINAL A BANJO
EMERGENCY GENERATOR
UPGRADE**

SECOND QUARTER 2012

**Provide for new
emergency/standby generator
systems for Terminal A Banjo
Facility thereby freeing up
additional emergency power for
the rest of Terminal A.**



DEDICATED FIRE SYSTEM MODIFICATIONS

THIRD QUARTER 2012

Modify DFS system to accommodate surge transients/operating installation characteristics to include the of a surge vessel, weather protection, controls and associated piping at the South DFS Pump House.

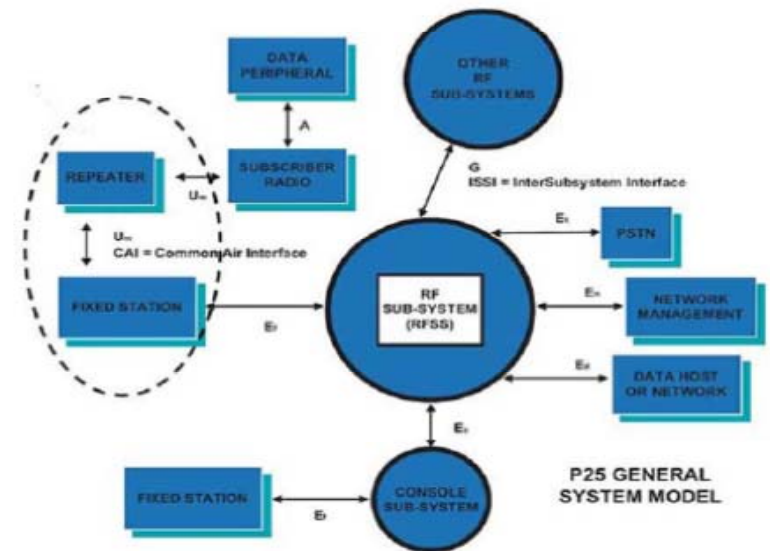




NEXT GENERATION PUBLIC SAFETY RADIO COMMUNICATIONS SYSTEM

FOURTH QUARTER 2012

Migration to the next generation radio communications system from the current 800 MHz radio communications.





**TERMINAL B/C AND PARKING
GARAGE B/C EMERGENCY
GENERATOR UPGRADE**

THIRD QUARTER 2012

Provide for emergency generator upgrade for Terminal B/C and Parking Garage B/C to include the upgrade of mechanical relay controls on the three existing emergency generators systems supporting Terminals B/C.



SOUTH HANGAR EMERGENCY POWER UPGRADE

THIRD QUARTER 2012

Provide for emergency power upgrade of the South Hangar to increase the capacity for emergency power to Hangars 2-7.

This additional emergency power capacity will increase capacity from 30 amps to 60 amps per Hangar providing for anticipated tenant growth.



DCA REPLACE ELECTRICAL TRANSFORMERS

THIRD QUARTER 2012

Provide for Electrical transformer replacement in Substation 5, TV2 and the South Parking Lot Vault that serve sections of Terminal A, the South Hangar Line and the South Parking Lot.



CAPITAL CONSTRUCTION PROGRAM



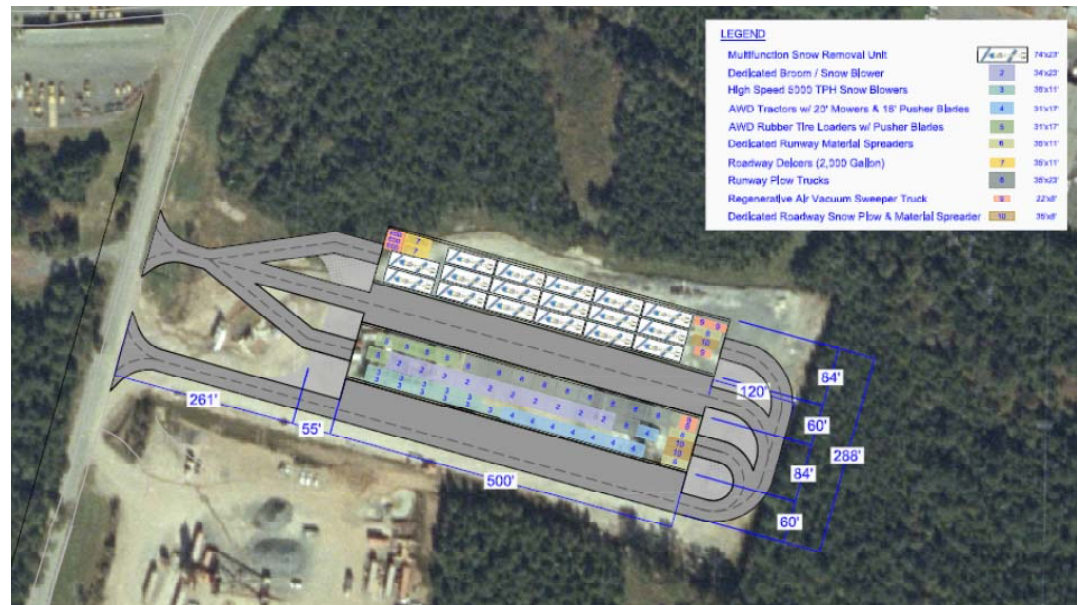
Washington Dulles International Airport



MAINTENANCE EQUIPMENT STORAGE BUILDING

THIRD QUARTER 2012

**Install pre-engineered steel
structures for storage of snow
removal equipment.**



Modify tank leak



FUEL SETTLING TANK FARM PARTICLE SEPARATORS

SECOND QUARTER 2012

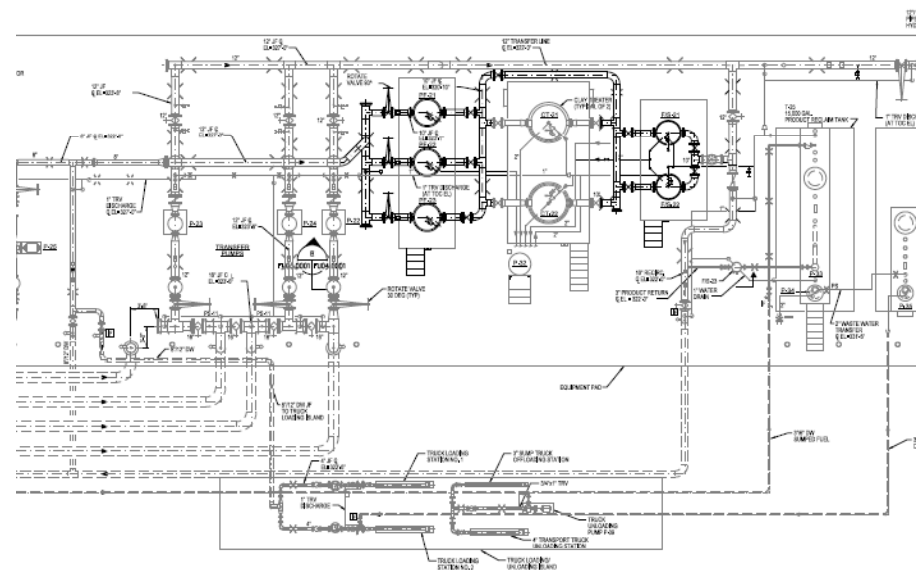
**Install parallel pre-filter vessels and
parallel filter separator coalescer
vessel**

**Modify and rotate large diameter
motor actuated inlet isolation valves**

**Restore existing Hydrant Tank Farm
Clay Treater to operational status**

**Electrical, Control System, Piping,
and miscellaneous foundation
modifications**

Modify Tank Leak Detection System





MAIN TERMINAL COMMISSIONING, PHASE 2 – IAB HVAC SYSTEMS RENOVATION

FIRST QUARTER 2012

**Renovation of mechanical
system in older portions of the
International Arrivals Building
inclusive of the Main Air
Handling Units, heat exchangers,
pumps and miscellaneous
equipment.**

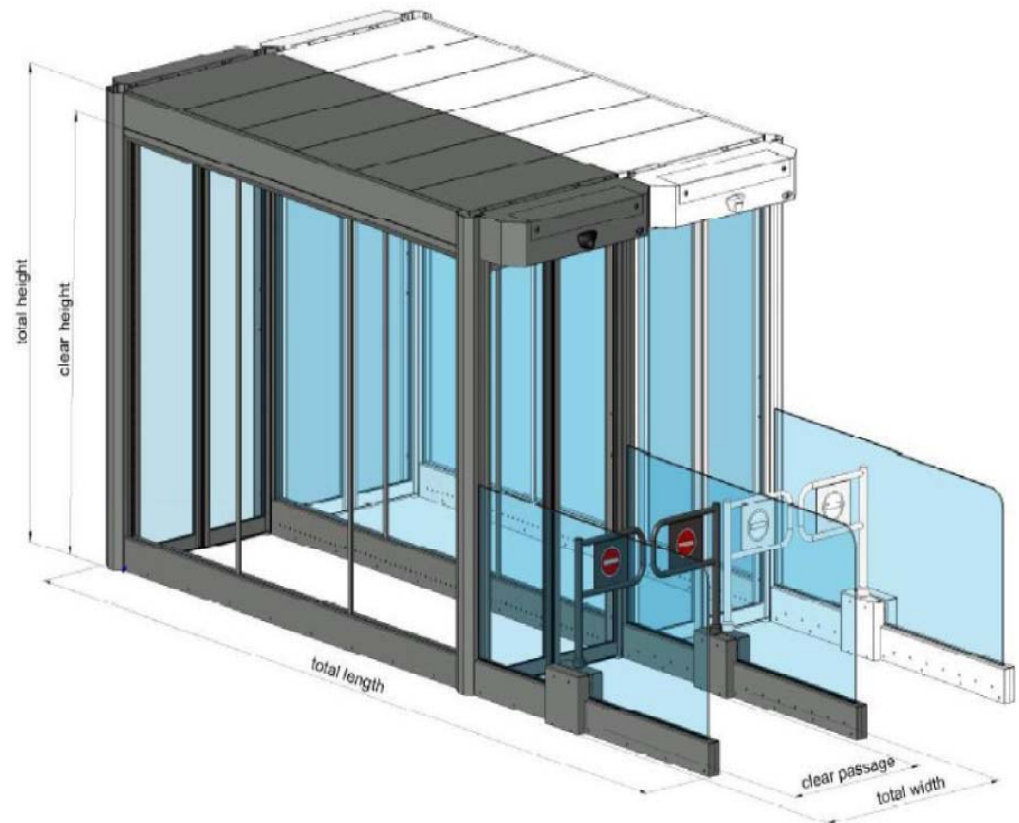




UNMANNED EXIT DOORS AT BAGGAGE CLAIM LEVEL – MAIN TERMINAL

SECOND QUARTER 2012

**Install automated exit doors
at the main terminal exit
point.**





CARGO BUILDING REHABILITATION – EXTERIOR REHABILITATION

FIRST QUARTER 2012

**Rehabilitate the exterior
canopies for Cargo Buildings 1,
2 and 3.**





CARGO BUILDING LIFE SAFETY AND HVAC UPGRADES

SECOND QUARTER 2012

Rehabilitate and make repairs to the life safety systems within Cargo buildings 1, 2 and 3. Work includes Fire Alarm System Repairs, Sprinkler System Upgrades Replace and provide exit signage and battery pack emergency lights that is non-functional.



HISTORIC AIR TRAFFIC CONTROL TOWER EXTERIOR PRESERVATION

SECOND QUARTER 2012

**Repair the existing roof and
exterior skin of the ATCT at the
Main Terminal.**





ELECTRICAL FEEDER REPLACEMENT

THIRD QUARTER 2012

Demolition of the existing 15KV electrical feeder in the existing underground electrical system along Autopilot Drive and reinstall new 15KV electrical feeders .





IAD FIRE STATION ALERTING SYSTEM ARFF 302/303 PROJECT

FIRST QUARTER 2012

**Provide replacements for aging Fire
Station Alerting (FSA) systems at
ARFFs 302 and 303 at Dulles Airport**

**Provide a Computer Aided Dispatch
(CAD)-FSA System interface for all
four (4) ARFFs to support enhanced
dispatching through the automated
transfer of CAD information**

Model 10 IP:	Status:	Data:	HEX:	F Total:	Fail:	P:	LPE IP:	Status:	System IP:
192.168.67.122	IDLE	255			0		192.168.67.123	RUN	192.168.67.123

TVD Location:	IP:	Status:	F Total:	Fail:	P:	Dorm:	Status:	Dorm:	Status:
Room 109	192.168.67.131	FAIL	175404	175	5	Bunk CMDR	No LDC	Bunk 1	No LDC
Room 147	192.168.67.132	FAIL	175404	175	5	Bunk 2	No LDC	Bunk 3	No LDC
Room 156 #1	192.168.67.133	FAIL	175404	175	5	Bunk 4	No LDC	Bunk 5	No LDC
Room 155	192.168.67.134	FAIL	175404	175	5	Bunk 6	No LDC	Bunk 7	No LDC
Room 148	192.168.67.135	FAIL	175404	175	5	Bunk 8	No LDC	Bunk 9	No LDC
Room 144	192.168.67.136	FAIL	175404	175	5	Bunk 10	No LDC	Bunk 11	No LDC
Room 102	192.168.67.137	RUN	0	0		Bunk 12	No LDC	Bunk 13	No LDC
App Bay	192.168.67.138	RUN	0	0		Bunk 14	No LDC	Bunk 15	No LDC
Room 156 #2	192.168.67.139	FAIL	175404	175	5	Bunk 16	No LDC	Bunk 17	No LDC

Singleline Display IP:	Status:	Multiline Display IP:	Status:
192.168.67.141	RUN		
192.168.67.142	RUN		

System Information: Monitoring Input 4

Buttons: Monitor Dispatch Radio, Monitor Radio(s), Compare to Text (0-255), Test TVs, Test SLDs, Test MLDs, Test LPE/LDCs, Disable Testing, System Reset





MAIN TERMINAL COMMISSIONING, PHASE 2 – WINDOW WALL REHABILITATION

FIRST QUARTER 2012

Replace high window neopane gaskets in the Main Terminal North and South window walls and replace thermal insulation in Heat Exchanger Room along with mechanical system renovations in older portions of the International Arrivals Building.





ELECTRICAL UNIT SUBSTATION REPLACEMENT

THIRD QUARTER 2012

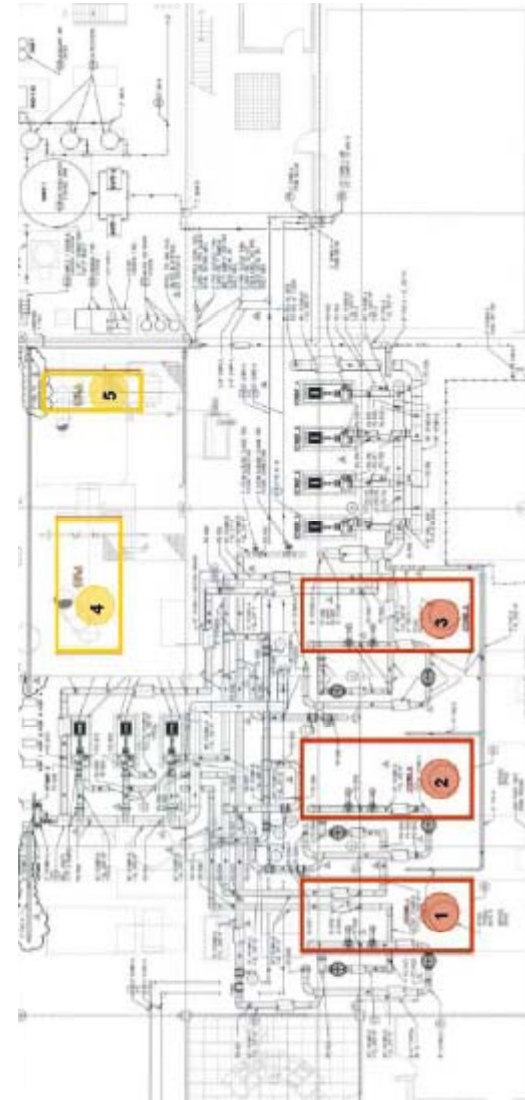
**Project will replace old and
obsolete electrical substation
and control equipment, i.e., JP
Morgan Chase Building**



HTHW GENERATOR PROCUREMENT

SECOND QUARTER 2012

Replacement of the existing High Temperature Hot Water (HTHW) generators, demolition and removal of three existing generators and the construction of two new HTHW generators inclusive of construction phasing and commissioning testing.

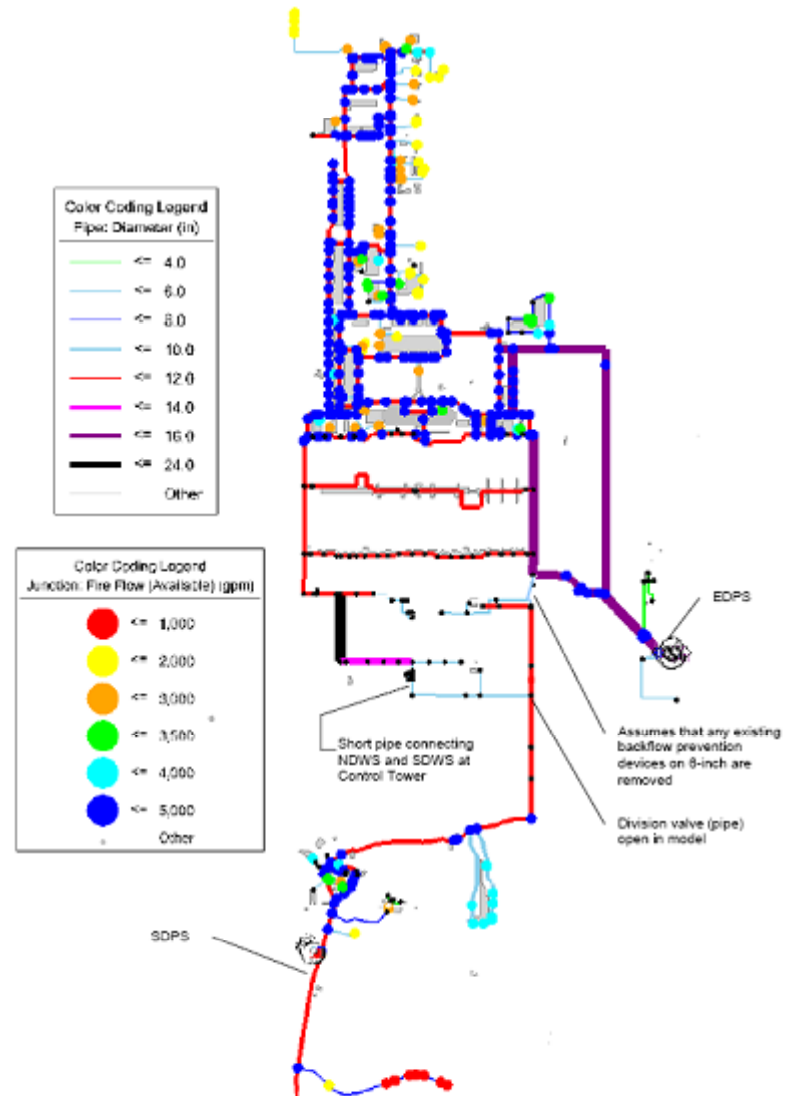




DOMESTIC WATER DISTRIBUTION SYSTEM INTEGRATION

THIRD QUARTER 2012

Create an interconnection between the North Domestic Water System and the South Domestic Water System. Work includes replacing 6-inch pipe with 16-inch pipe and resetting the South Domestic Pump Station operating pressures to match the North section.





RUNWAY 30 BLAST PAD REHABILITATION

SECOND QUARTER 2012

**Rehabilitate the Runway 30
Blast Pad. Work includes
milling and providing a new
asphalt surface.**

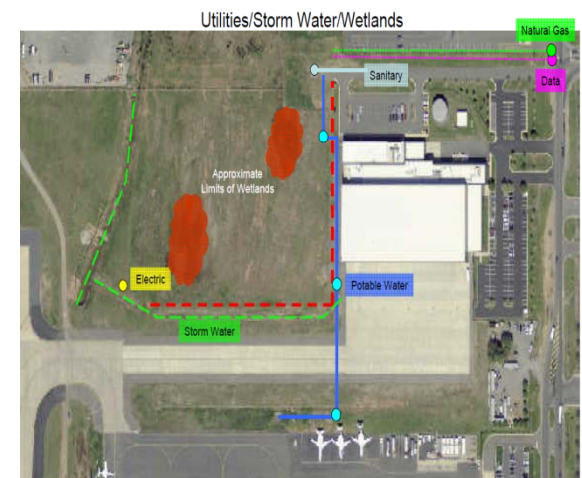




UNITED HANGAR ENABLING PROJECT

SECOND QUARTER 2012

Provide for the widening of Taxilane Z1 and a new Hangar apron connection. Work includes concrete aircraft pavement, asphalt shoulders, pavement demolition, signage, marking, storm drainage, edge lighting, and utility extensions that consist of electrical and communication ductbank and cabling, domestic water, sanitary sewer, and natural gas.





TWENTIETH ANNUAL BUSINESS OPPORTUNITY SEMINAR

Dulles Corridor Toll Road Program



AEP CONSULTANT SUPPORT – TASK ORDER CONTRACT (A/E AND PLANNING SOLICITATION)

FIRST QUARTER 2012

A/E and Planning consulting services to address emerging civil and traffic engineering issues in conjunction with the Dulles Toll Road.



SOUND WALL REHABILITATION

FOURTH QUARTER 2011

Structural repair of sound walls along the Dulles Toll Road. Work includes repair of acoustic material, concrete and failed clip angle connections.

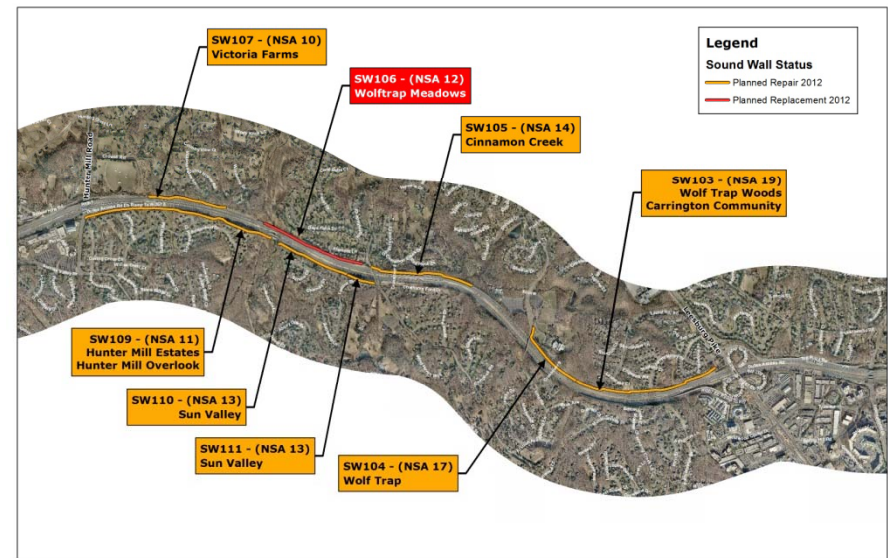




SOUND WALL REPLACEMENT

FIRST QUARTER 2012

Demolition of existing sound wall and construction of new sound wall at Wolf Trap Meadows on the DTR.





DTR ADMINISTRATION BUILDING HVAC & POWER SYSTEM UPGRADE

THIRD QUARTER 2012

This project will replace the heating and cooling units on the Administration Building. This project will also provide for upgrade of the existing emergency generator and upgrade of various electrical components in the main electrical room to conform to existing code requirements.





DULLES TOLL ROAD REDESTRIAN TUNNEL REHABILITATION

THIRD QUARTER 2012

This project will provide repairs to the Main Plaza underground access tunnel to address structural deterioration, water intrusion, and non code compliance of the tunnel's electrical system





DTR PAVEMENT REPAIRS

SECOND QUARTER 2012

This work consists of small sections of pavement repairs along the Dulles Toll Road and plaza ramps which could result in milling and resurfacing operations. Traffic maintenance will be a significant item of work.



DTR LIGHT POLE FOUNDATION AND SHOULDER REPAIR

SECOND QUARTER 2012

This project will provide for repairs to a failed light pole foundation and failed shoulder pavement on the eastbound Dulles Road at mile post 7.0





TWENTIETH ANNUAL BUSINESS OPPORTUNITY SEMINAR

Capital Construction Program

**Project scopes, schedules and costs
are dynamic**

**Advertisement dates and project
packaging are subject to change**

**Register for Project eLERT to receive
bi-weekly updates**

Visit the Authority's website often:

www.MWAA.com



Ronald Reagan Washington National Airport



Dulles Corridor Metrorail Project



Dulles Toll Road



Washington Dulles International Airport



METROPOLITAN WASHINGTON
AIRPORTS AUTHORITY