



Business Opportunity Seminar

Pat Nowakowski, PE

Executive Director

December 9, 2011

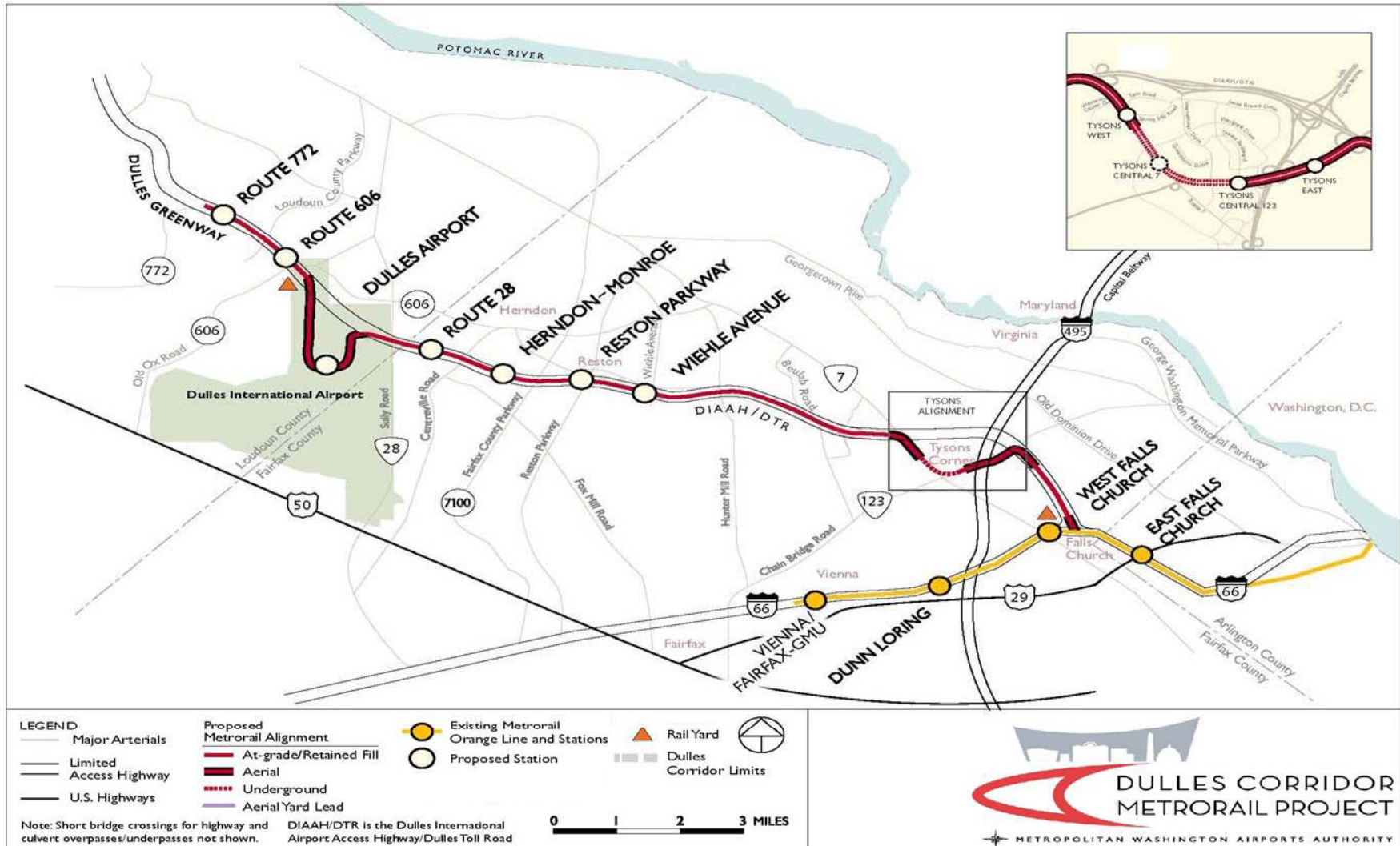
Dulles Corridor Metrorail Project

At-a-Glance

- Seamless integration with current 106-mile Metro system
- 23-mile extension that branches off existing Orange Line after East Falls Church Station, providing direct connections to DC without transfers
- 11 new stations
 - 5 in Phase 1
 - 6 in Phase 2
- Phase 1: East Falls Church to Wiehle Avenue in Reston; opens in 2013
- Phase 2: Wiehle Avenue through Dulles Airport to Ashburn; complete in 2017, opening date not set



Route Map



Phase 1 Opportunities

Dulles Transit Partners Design-Build Contractor

DullesTransitPartners.com





















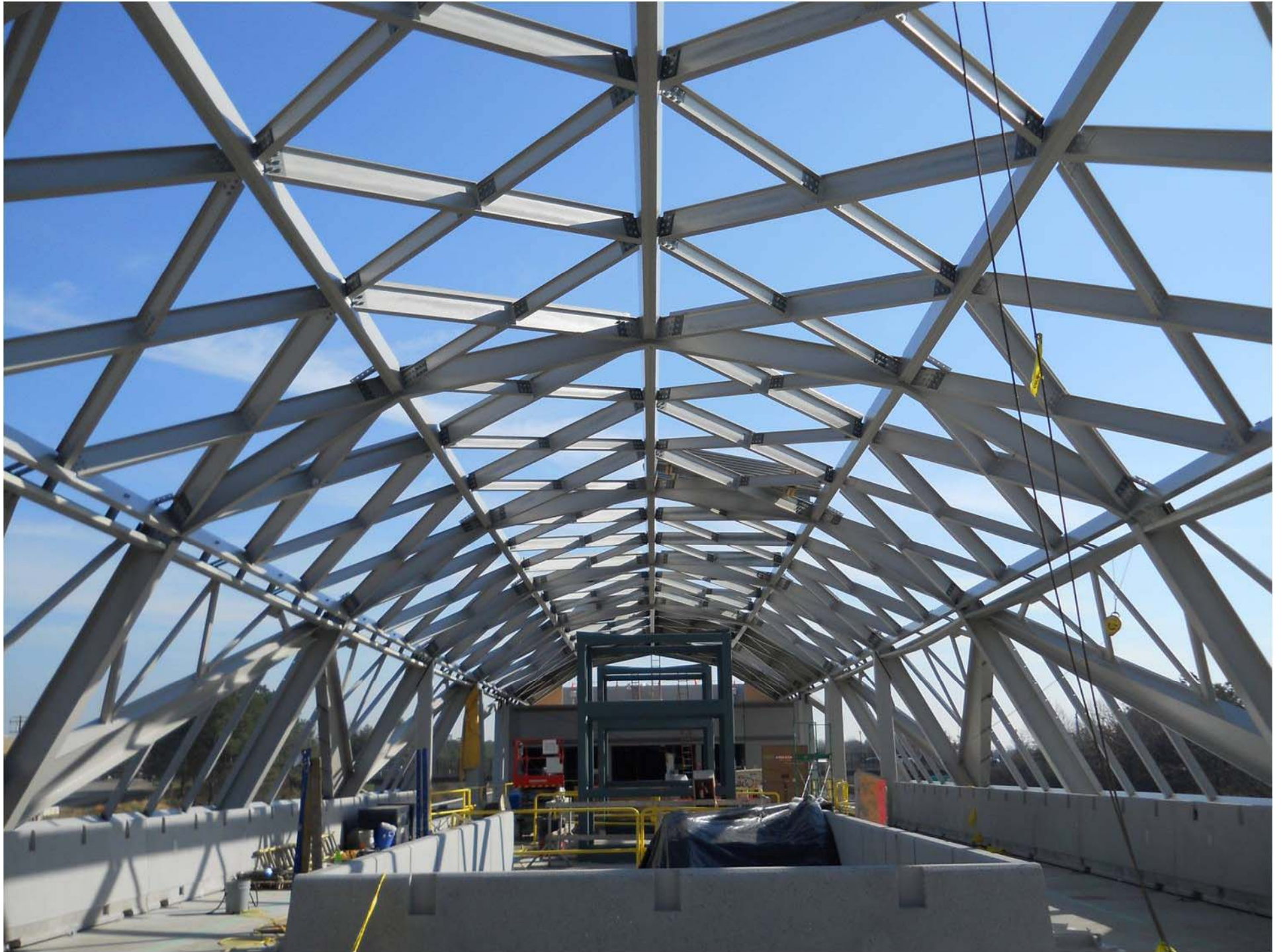














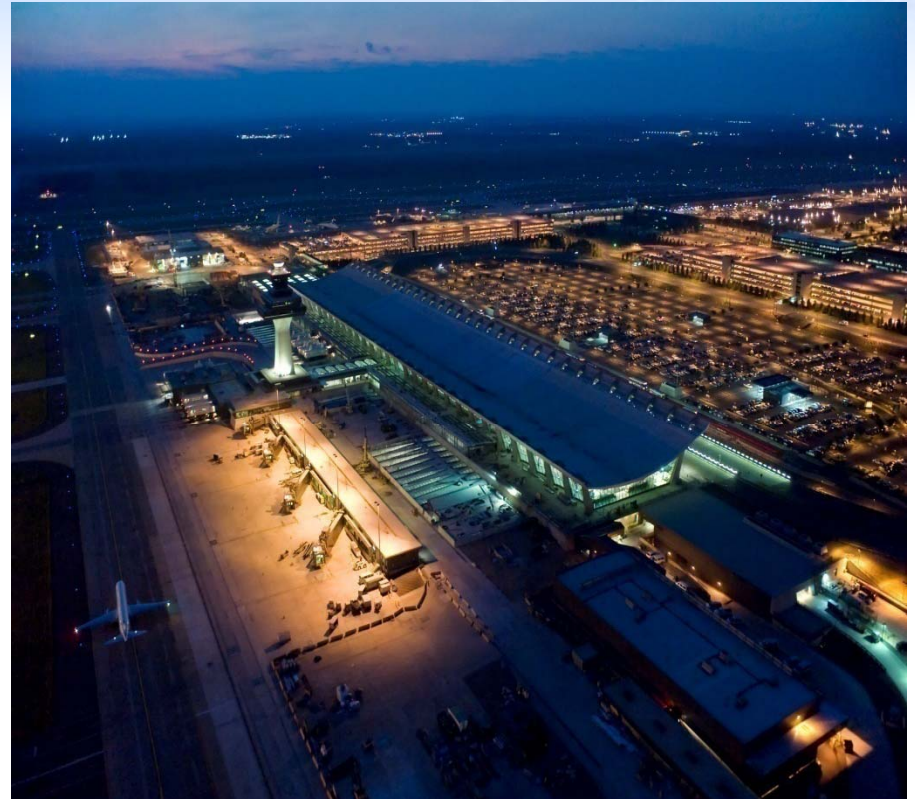




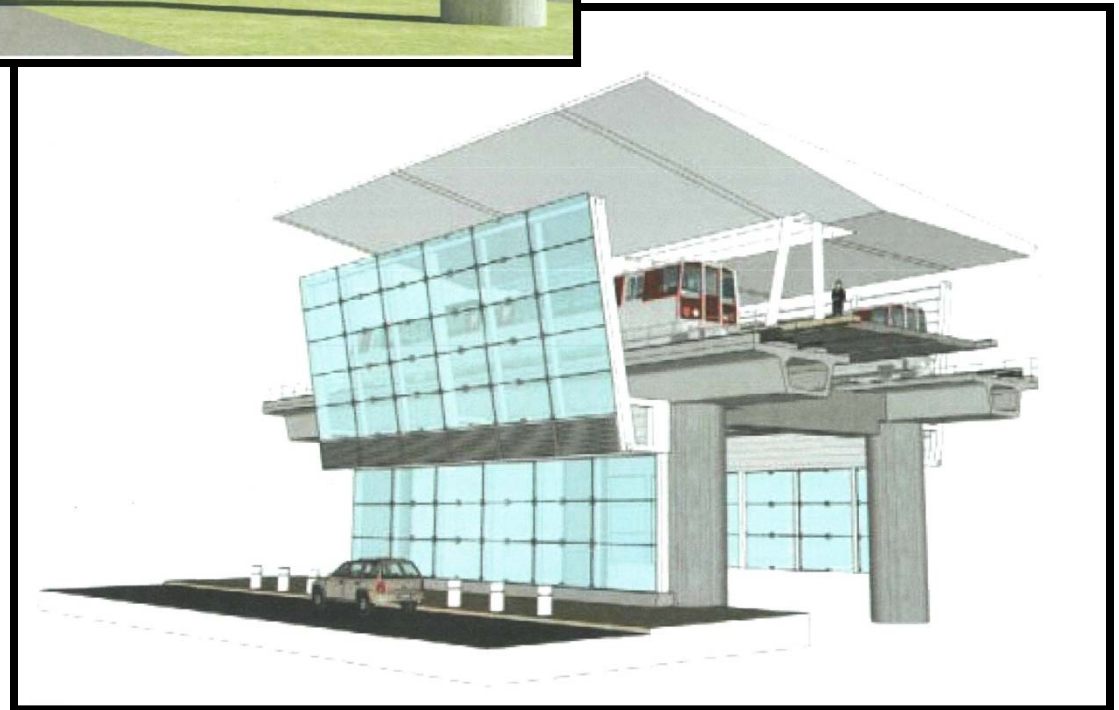


Phase 2

- 11.6 –mile extension from Wiehle Avenue in Reston to Ashburn
- 6 stations:
 - Reston Parkway
 - Herndon-Monroe
 - Route 28
 - Dulles Airport
 - Route 606
 - Route 772/Ashburn
- Rail Yard & Maintenance Facility
- 5 Parking Garages



Dulles Airport Station



Phase 2 Schedule



* Includes Historic Preservation Memorandum of Agreement

Website Information



www.dullesmetro.com

www.mwaa.com