



Dulles Corridor Metrorail Project Bus Rapid Transit Concept for Loudoun County Portion

Overview

- BRT Options Developed During Preparation of Draft EIS (2000-2002)
- Concept Plan Based on Earlier Designs
- New Intermodal Transfer Facility Required at Route 28 or Herndon Monroe
- BRT Elements Include:
 - Bus-Rail Transfer Facility
 - Stations
 - Roadway Modifications
 - Bus Maintenance Facility
 - Buses (Low-Floor Articulated)



SUNSET HILLS RD

STATION ACCESS ROAD

MEDICAL OFFICES

LOGICON

SAFE DISPERSAL AREA
(PAVED)

TPSS
#11

600'-0" PLATFORM AT GRADE

PEDESTRIAN
BRIDGE

DVP
MS

DULLES TOLL ROAD

DVAH

WIEHLE AVENUE STATION

OUTBOUND TRACK

INBOUND TRACK

WIEHLE AVENUE

END PLATFORM
S/A 1079+67.32
T/R 391.77

PEDESTRIAN
BRIDGE

BEGIN PLATFORM
S/A 1073+67.32
T/R 393.87

DVAH

DULLES TOLL ROAD

SAFE DISPERSAL AREA
(PAVED)

BUS BAYS

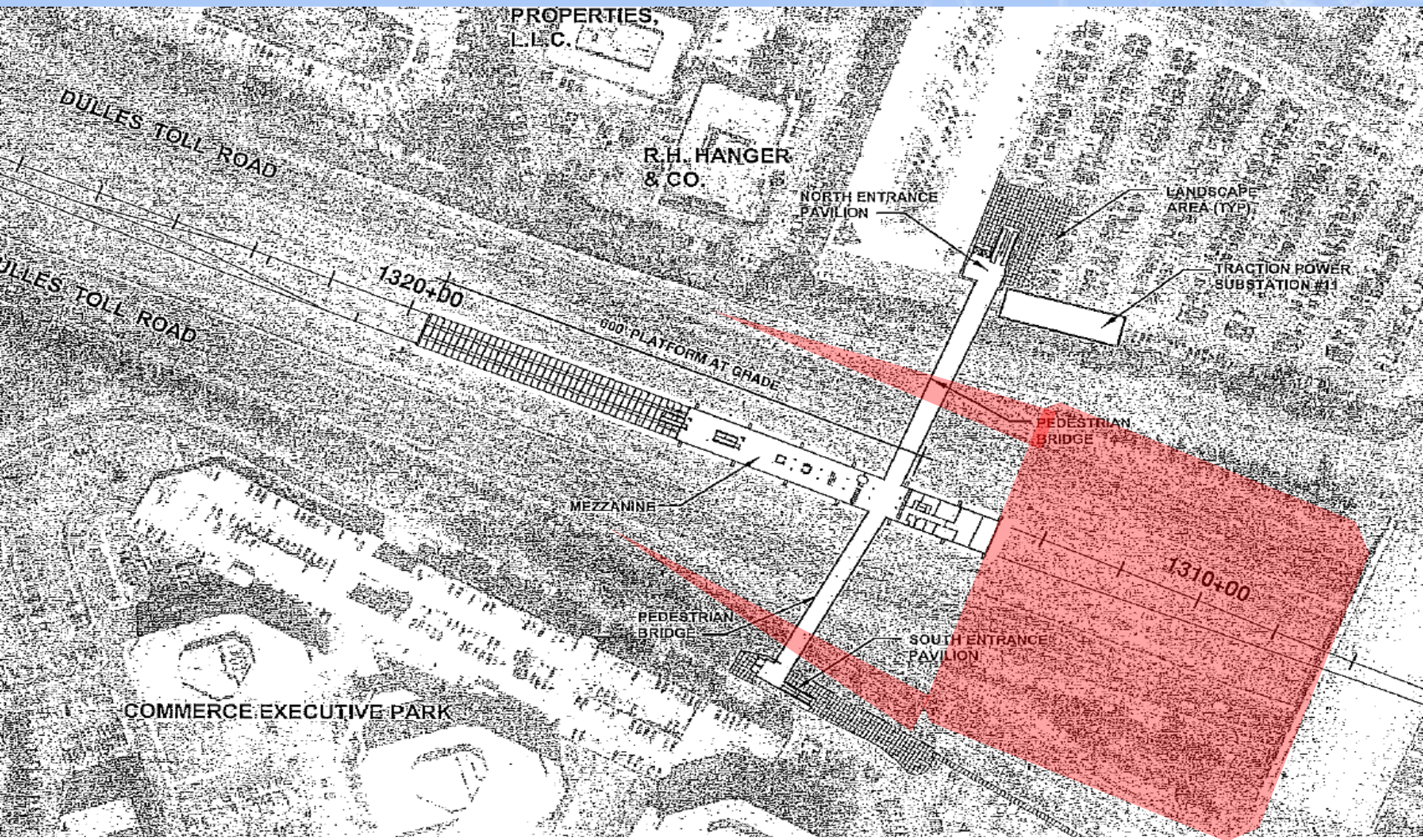
FIRE
HYDRANT

SOUTH
ENTRANCE
PAVILION

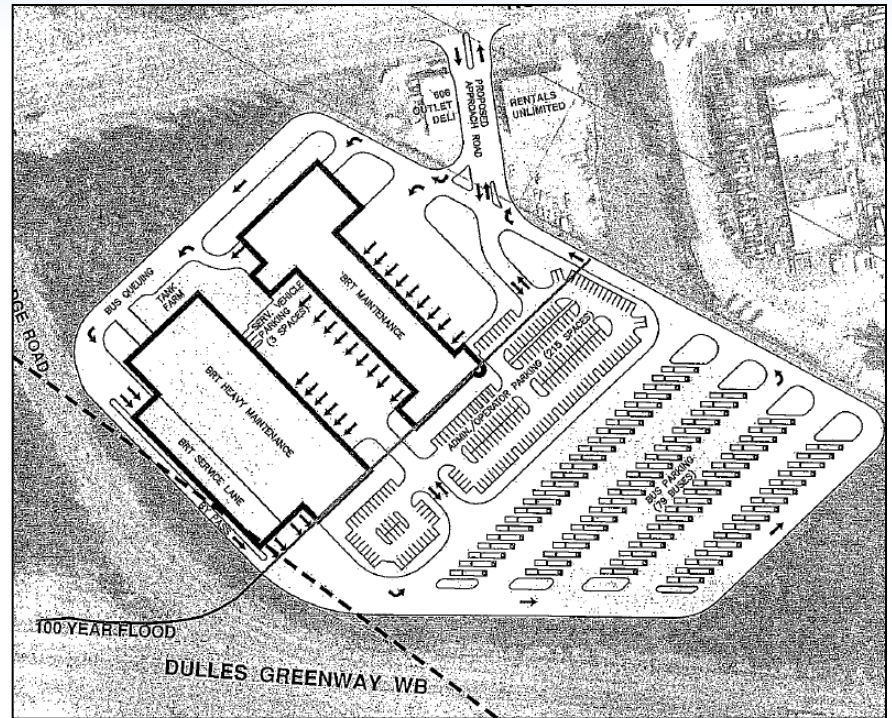
N06-A-012

COMMERCE EXECUTIVE PARK

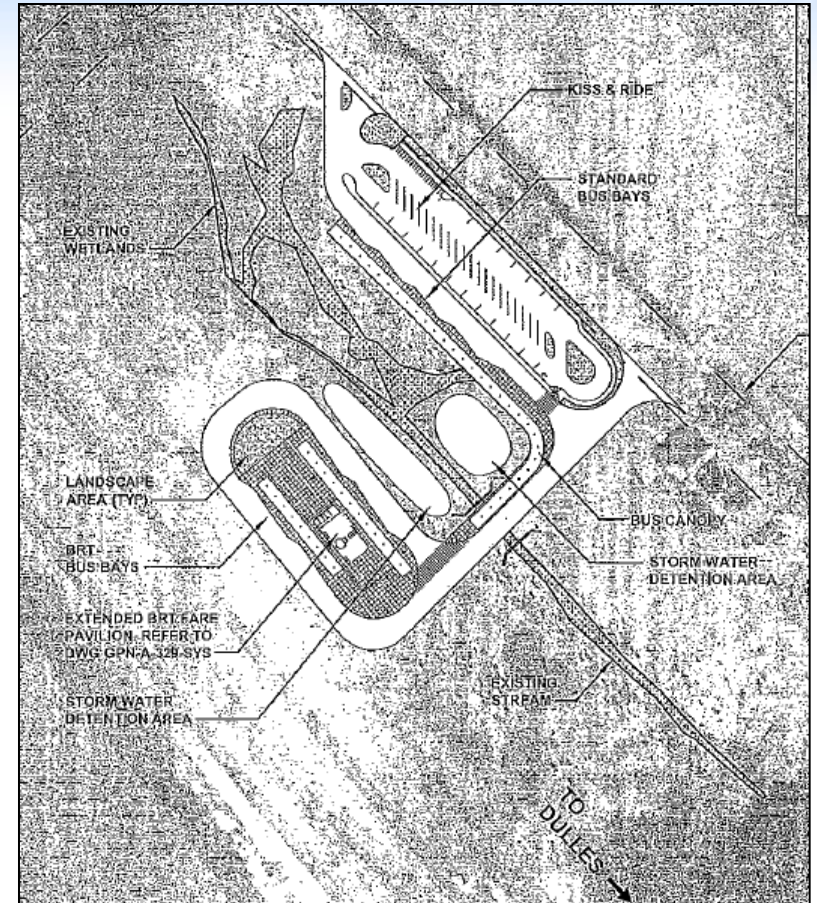
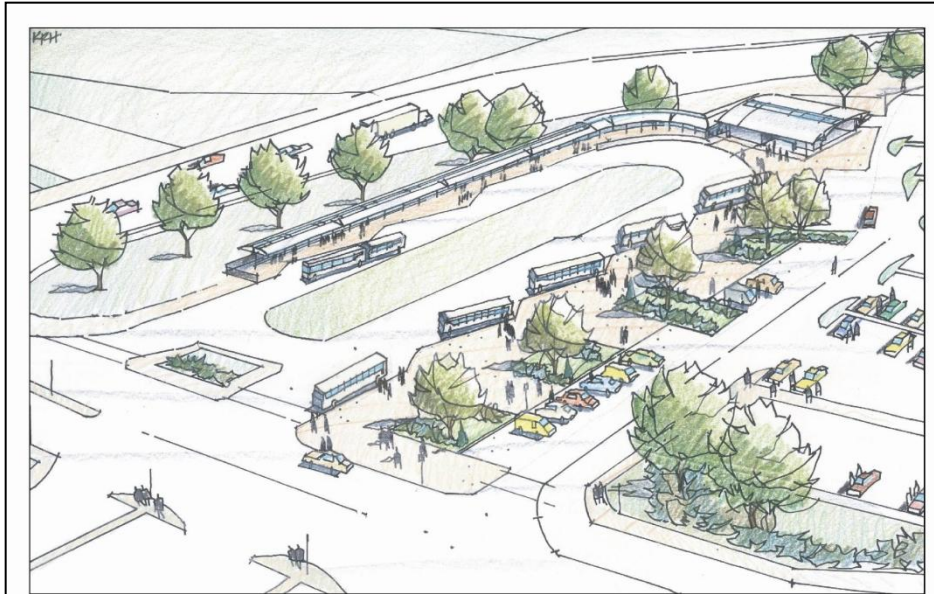
Wiehle Avenue Transfer Facility- Concept



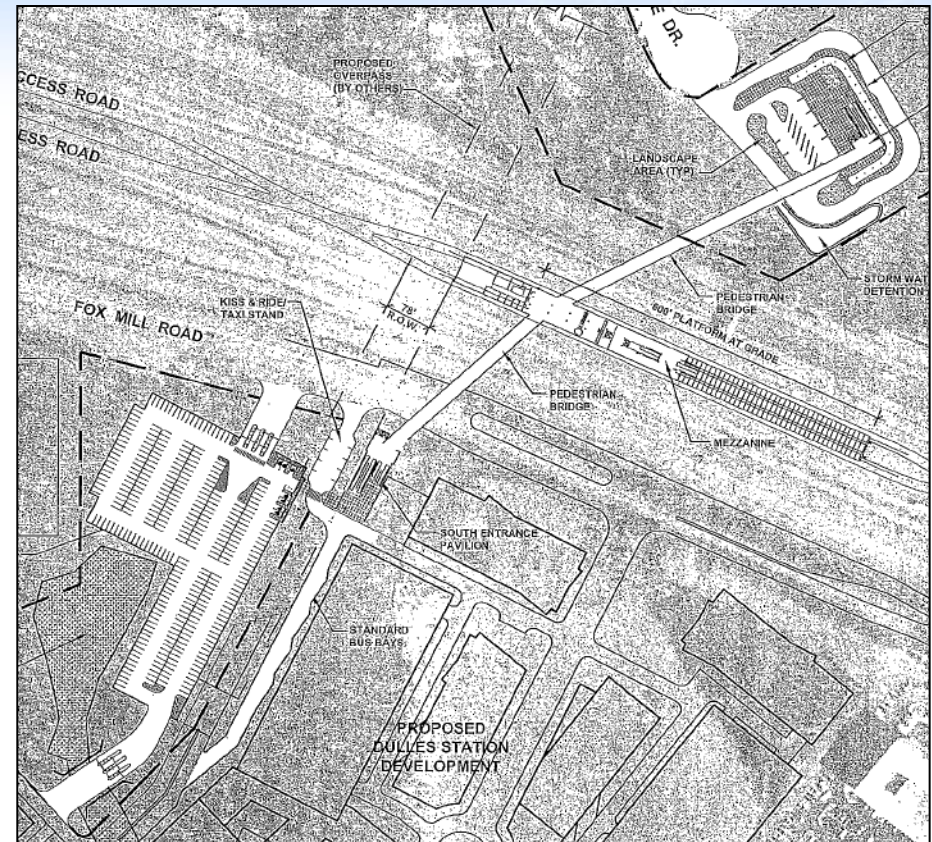
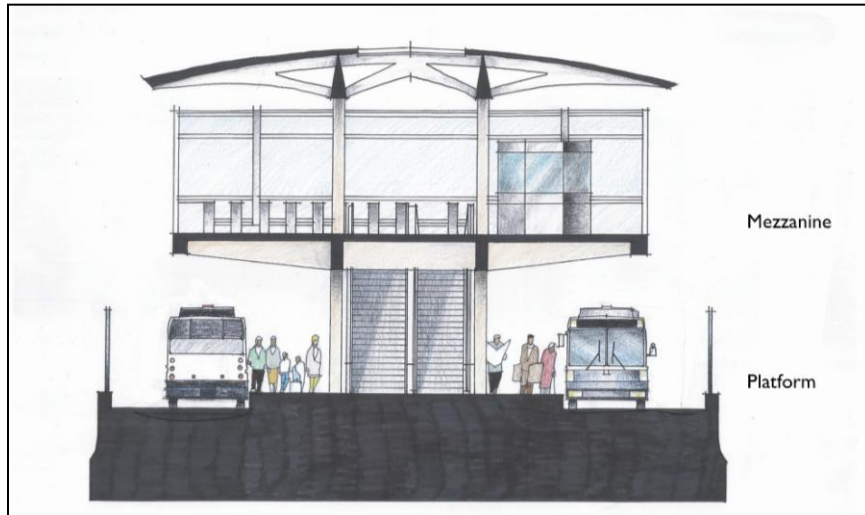
Maintenance Facility



BRT Stops



Median Stations



Phase 2

Estimated Project Costs	(# millions)
Current Phase 2 Cost	\$2,821
Savings By Eliminating Loudoun County Portion	\$530
Revised Phase 2 Cost	\$2,291
<u>Bus Rapid Transit Costs</u>	(# millions)
Median Stations	\$75
Local Stations	\$30
Terminal Modifications	\$50
Maintenance Facility	\$30
Buses	\$20
Parking Garages	\$140
Total With Median Stations:	\$315
Total With Local Stations:	\$270

Contact Information



**1593 Spring Hill Road
Suite 300
Vienna, VA 22182**

www.dullesmetro.com

www.mwaa.com