



Dulles Corridor Advisory Committee
December 20, 2011

Construction Marching Forward

Phase 1 from I-66 to Reston

Construction of the Dulles Corridor Metrorail Project is under way along the 11.7-mile corridor, from East Falls Church to Reston

**CONSTRUCTION REACHES
60 PERCENT**

An aerial photograph of a large-scale construction project. A long, elevated concrete structure, likely a rail corridor, stretches across the frame. It features multiple tracks and is bordered by a road on the left. The background is filled with dense green trees. The text "CONSTRUCTION REACHES 60 PERCENT" is overlaid in large, bold, red letters.

Fisher Avenue Train Control Room



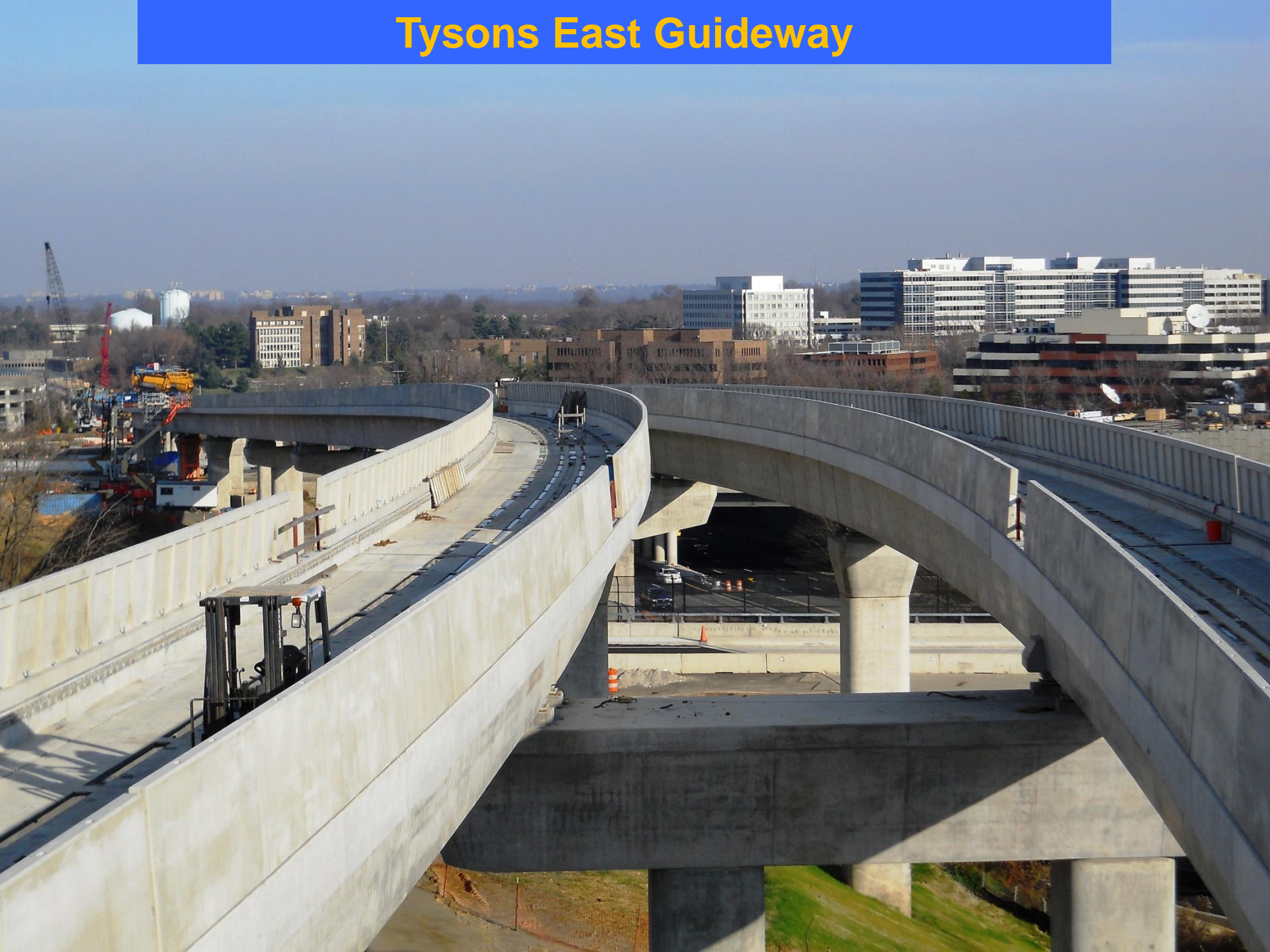
West Falls Church Yard



Dulles Connector Road



Tysons East Guideway



Tunnels at Route 123 and Route 7



Cut and Cover Tunnel



Spring Hill Road



Spring Hill Road



Tyson's West Guideway at DIAAH



Traction Power Substation #11



Wiehle Avenue Station



Wiehle Avenue Station



Phase 1 Schedule

<i>Utility Work Complete:</i>	<i>2011</i>
<i>Final Design Complete:</i>	<i>2012</i>
<i>Construction:</i>	<i>2009 – 2013</i>
<i>Railcars Delivered:</i>	<i>2013-2015</i>



Phase 2 Schedule



* Includes Historic Preservation Memorandum of Agreement