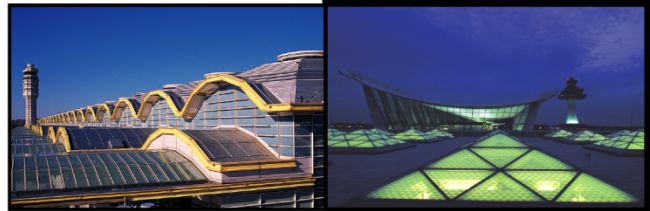


August
2013

air traffic statistics



Prepared by the Office of Finance

Department of Internal Controls, Compliance and
Financial Strategy



METROPOLITAN WASHINGTON AIRPORTS AUTHORITY

Air Traffic Summary August 2013

Total Passenger Activity (in Millions)

		Current Month			Year-to-Date			Last 12 Months		
		DCA	IAD	System	DCA	IAD	System	DCA	IAD	System
Total	Passengers	1.8	2.1	3.9	13.9	14.9	28.7	20.4	22.0	42.5
	% Change	(1.1%)	0.9%	(0.0%)	6.1%	(3.5%)	0.9%	6.1%	(4.3%)	0.5%
Dom	Passengers	1.8	1.4	3.2	13.6	10.1	23.7	20.0	15.1	35.1
	% Change	(1.0%)	(2.5%)	(1.6%)	5.8%	(7.1%)	(0.1%)	5.7%	(7.7%)	(0.5%)
Int'l	Passengers	< 0.1	0.7	0.8	0.3	4.8	5.0	0.4	6.9	7.3
	% Change	(6.5%)	8.2%	7.2%	22.0%	5.2%	6.0%	33.3%	4.0%	5.3%

Note: System totals may not sum due to rounding.

U.S. industry average passenger enplanements as reported by Airlines for America (A4A):

Enplanements	Current Month	Year-to-Date
System	0.8%	1.3%
Domestic	0.0%	0.9%
International	5.4%	3.3%

Ronald Reagan Washington National Airport

- Domestic activity decreased 1.0% from August 2012. This decline in traffic was primarily due to reductions in service by United Airlines and Frontier Airlines and discontinued operations by Spirit Airlines. Additionally, many of the new flights that were made available by the FAA Reauthorization Act have now been in place for an entire year. Significant activity by carrier follows:

Airline	Comments
US Airways	<ul style="list-style-type: none"> 4.2% passenger growth 7 additional daily departures New service to Wilmington (NC) and Myrtle Beach in February, and Ft. Myers in November
Delta	<ul style="list-style-type: none"> 9.9% decline in passenger activity Reduced capacity to Memphis, Detroit, and Atlanta
United	<ul style="list-style-type: none"> 10.5% decline in passenger activity Reduced capacity to Houston Intercontinental
Frontier	<ul style="list-style-type: none"> Discontinued service to Milwaukee in November Reduced service to Kansas City and Omaha in November
Spirit	<ul style="list-style-type: none"> Discontinued operations in October

- Transborder passenger traffic declined 6.5% and was primarily a result of US Airways discontinuing service to Ottawa. Both US Airways and Air Canada reduced service to Montreal and Toronto.
- US Airways, including its regional affiliates, had the largest commercial passenger market share with 46.1%, an increase from 44.1% in August 2012.

Washington Dulles International Airport

Passenger Activity

- Passenger traffic increased 0.9% from August 2012 as a result of an 8.2% increase in international commercial traffic, partially offset by a 2.5% decline in domestic activity. This was the first increase over the prior year's month since May 2011. Significant domestic activity by carrier follows:

Airline	Comments
United	<ul style="list-style-type: none">• 1.3% decline in passenger activity• Discontinued service to Allentown/Bethlehem in March, Manchester and Pensacola in April, and Clarksburg in July• New service to Beckley in October, Ft. Lauderdale in November, Fayetteville in March, and Grand Rapids in May
Delta	<ul style="list-style-type: none">• Discontinued service to Cincinnati in March
Virgin America	<ul style="list-style-type: none">• Reduced service to San Francisco from 4 daily departures to 3

- International/Transborder passenger traffic growth of 8.2% was primarily driven by new and expanded service. Significant activity by carrier follows:

Airline	Comments
United	<ul style="list-style-type: none">• 5.0% increase in activity• New service to Punta Cana, Aruba, Grand Cayman, and Saint Maarten in November, Montego Bay and San Salvador in January, Guatemala City, and San Jose (Costa Rica) in April, and Vancouver in June• Discontinued service to Moscow in September• Reduced service to Frankfurt from 21 weekly departures to 14 in November
British Airways	<ul style="list-style-type: none">• Reduced service to London by 2 weekly departures
Emirates	<ul style="list-style-type: none">• New service to Dubai began in September
Etihad	<ul style="list-style-type: none">• New service to Abu Dhabi began in March
COPA	<ul style="list-style-type: none">• Increased service to Panama City from 7 weekly departures to 14 in December
Brussels	<ul style="list-style-type: none">• New service to Brussels began in June
Aer Lingus	<ul style="list-style-type: none">• Discontinued service to Madrid in November

- United Airlines, including its regional affiliates, had the largest commercial passenger market share of 65.0%, compared to 65.6% in August 2012.

Cargo Activity

- Total cargo (mail and freight) activity decreased to 20.2K metric tonnes (7.6% decline compared to August 2012). Domestic cargo declined 19.4%. Cargo activity for Dulles's largest domestic cargo carrier, FedEx, declined 15.0% as demand for priority freight fell (FedEx activity at BWI declined 15.2%). Moreover, domestic cargo on United declined 45.1%.
- International cargo increased 1.3% as a decline in international cargo activity by United was offset by cargo activity from new carriers, such as Etihad, Emirates, and Brussels Airlines.

Baltimore-Washington International Airport

- Current month commercial passenger activity vs. August 2012 decreased 1.9%.
- BWI's total commercial passengers totaled 2.1M and surpassed Dulles by 18.0K passengers (0.9%) and National by 266.4K passengers (14.5%). International passenger volume increased 27.6% to 91.1K.
- Southwest had the largest passenger market share with 69.5%; activity decreased 3.9% compared to August 2012.
- Cargo activity totaled 8.9K metric tonnes, a 10.3% decline from a year earlier, and represented 30.5% of total cargo activity for the region's airports.

Ronald Reagan Washington National Airport
 SH&E Air Traffic Schedule Activity
 August 2013 vs. August 2012

August 2013:	Departures	Airlines*	Unduplicated Cities
Domestic			
Passenger service (daily) information -			
Air Carrier	190	10	--
Regional	<u>233</u>	<u>12</u>	--
Domestic Total	423	22	87
Transborder/International			
Passenger service (weekly) information -			
Air Carrier	37	2	--
Regional	<u>65</u>	<u>3</u>	--
Transborder/International Total	102	5	6

August 2012:	Departures	Airlines*	Unduplicated Cities
Domestic			
Passenger service (daily) information -			
Air Carrier	189	11	--
Regional	<u>220</u>	<u>13</u>	--
Domestic Total	409	24	83
Transborder/International			
Passenger service (weekly) information -			
Air Carrier	32	2	--
Regional	<u>111</u>	<u>3</u>	--
Transborder/International Total	143	5	6

* The following airlines are counted as one airline:
 Southwest and AirTran

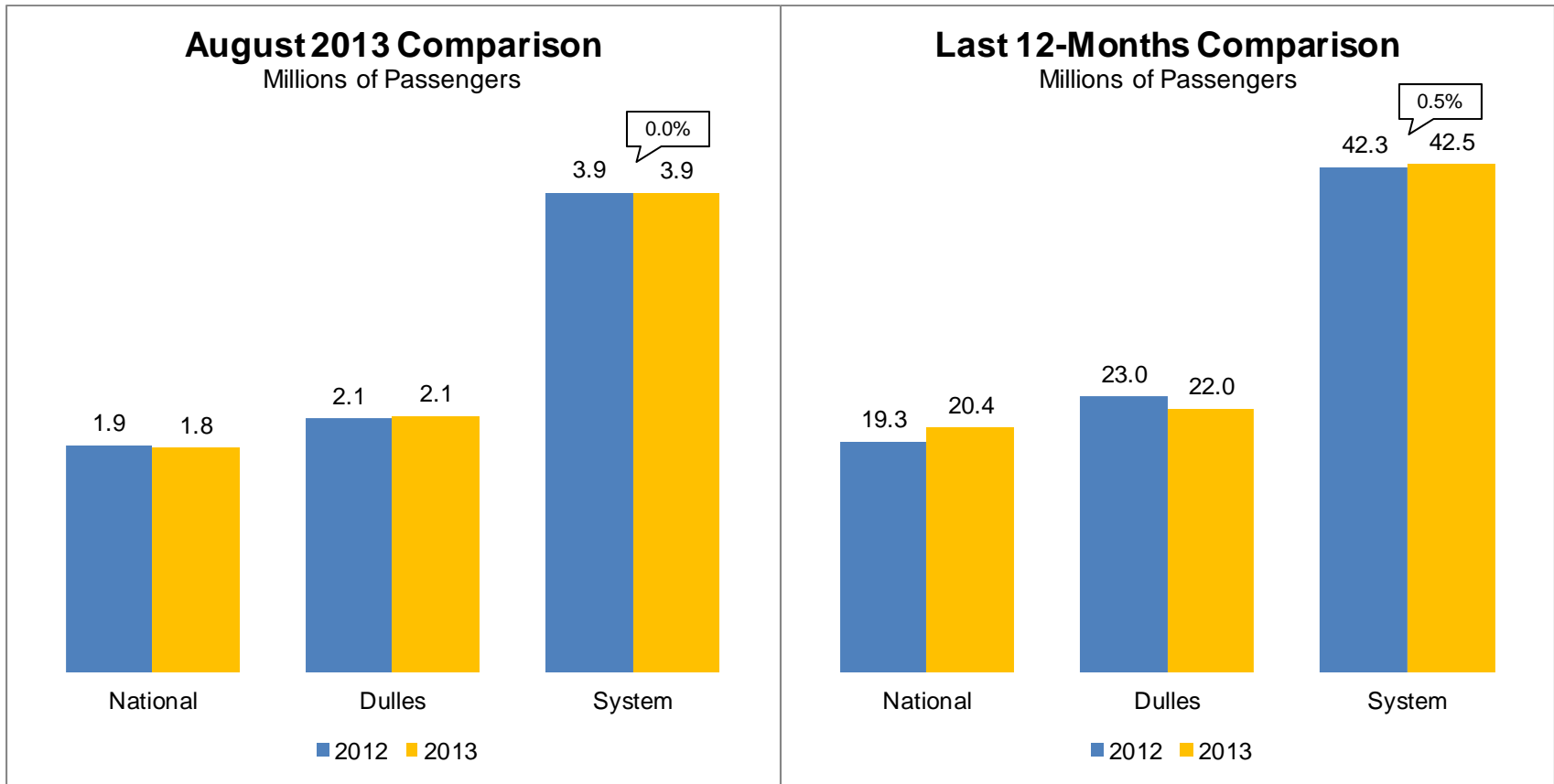
Washington Dulles International Airport
 SH&E Air Traffic Schedule Activity
 August 2013 vs. August 2012

August 2013:	Departures	Airlines*	Unduplicated Cities
Domestic			
Passenger service (daily) information -			
Air Carrier	126	8	--
Regional	<u>196</u>	<u>15</u>	--
Domestic Total	322	23	83
Transborder/International			
Passenger service (weekly) information -			
Air Carrier	397	25	--
Regional	<u>95</u>	<u>4</u>	--
Transborder/International Total	492	29	46

August 2012:	Departures	Airlines*	Unduplicated Cities
Domestic			
Passenger service (daily) information -			
Air Carrier	119	7	--
Regional	<u>197</u>	<u>14</u>	--
Domestic Total	316	21	81
Transborder/International			
Passenger service (weekly) information -			
Air Carrier	374	25	--
Regional	<u>95</u>	<u>4</u>	--
Transborder/International Total	470	29	40

* The following airlines are counted as one airline:
 Pacific Wings and Sun Air International

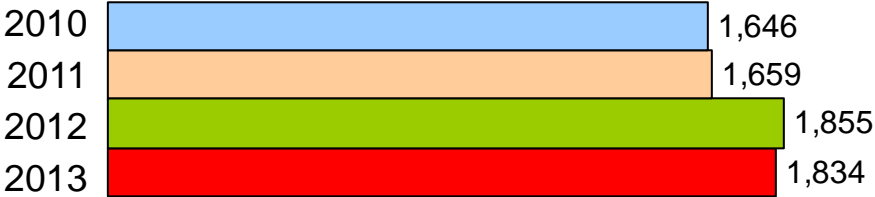
Passenger Trends



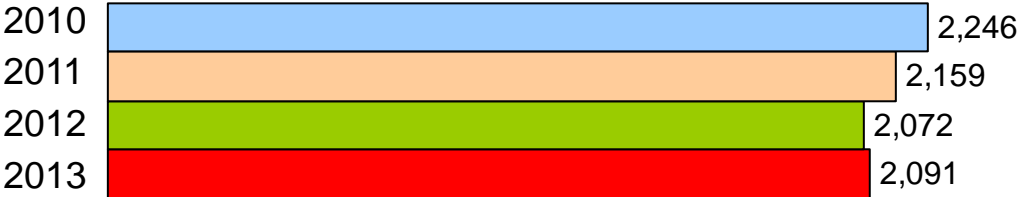
* System totals may not sum due to rounding.

Total Passengers Four Year Comparison of the Month of August (Thousands)

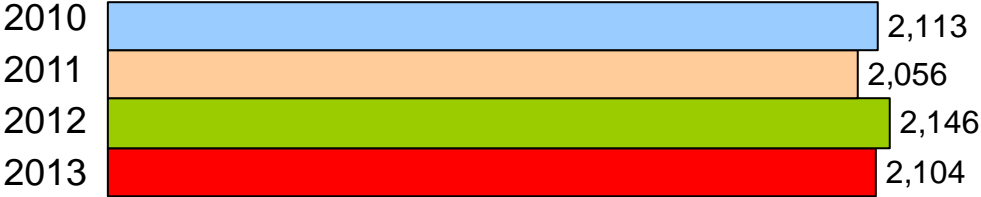
National



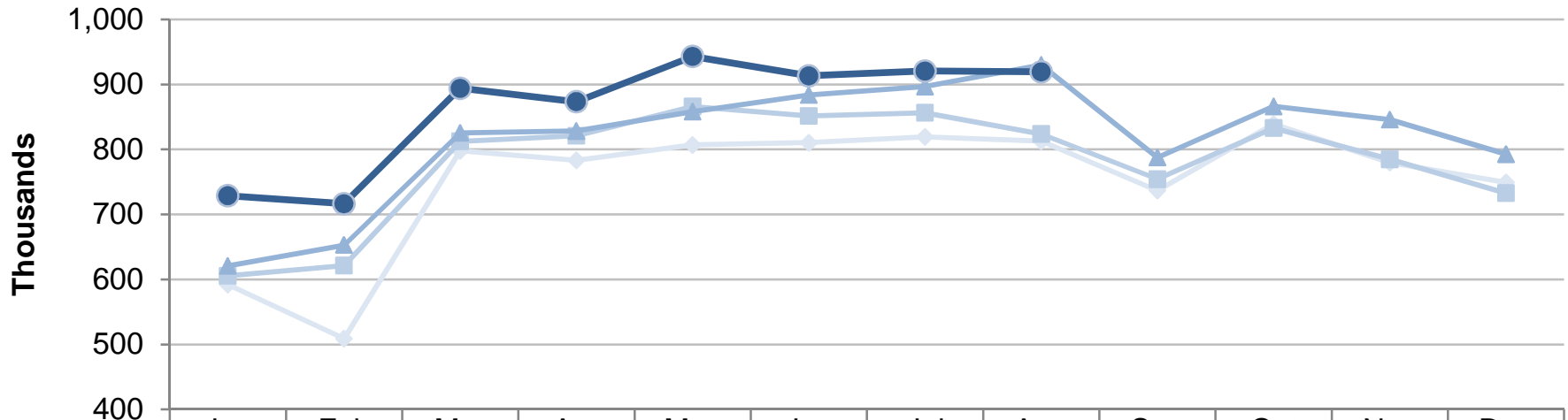
Dulles



BWI

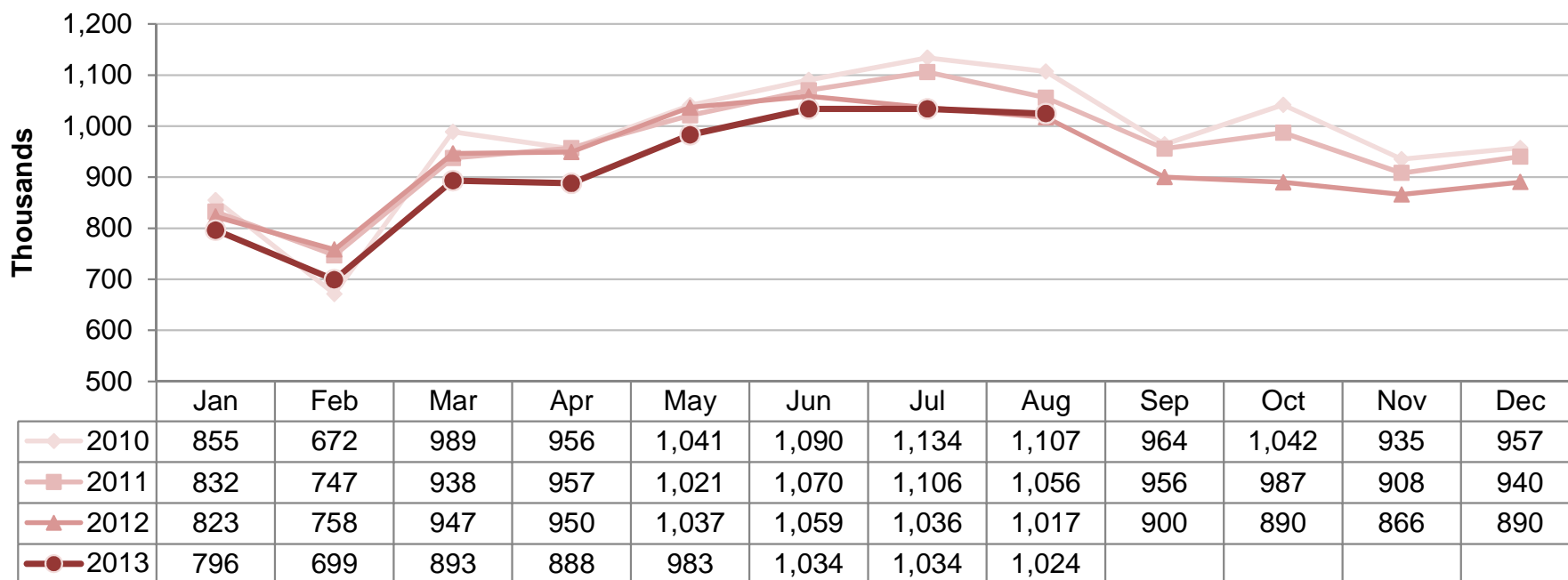


Ronald Reagan Washington National Airport
Total Commercial Passenger Enplanements
Calendar Years 2010 - 2013



	Jan	Feb	Mar	Apr	May	Jun	Jul	Aug	Sep	Oct	Nov	Dec
2010	592	509	798	783	807	810	819	813	736	839	780	749
2011	606	621	812	821	866	852	856	824	754	833	785	733
2012	621	653	825	829	858	884	897	930	787	866	846	793
2013	729	717	894	873	943	913	921	920				

Dulles International Airport Total Commercial Passenger Enplanements Calendar Years 2010 - 2013



**Commercial Passenger Market Share and Percent Change of Top Airlines
in the Washington and Baltimore Region**

August 2013

August 2012

National	Top Airlines*	Percent Change	Passengers	Market Share
	1. US Airways	3.4%	845,273	46.1%
2. Delta	-9.9%	262,528	14.3%	
3. American	1.9%	252,737	13.8%	
4. United	-10.5%	157,683	8.6%	
5. JetBlue	5.2%	110,261	6.0%	
6. Southwest + Airtran	11.7%	91,649	5.0%	
7. Frontier	-29.8%	41,328	2.3%	
8. Alaska	31.1%	36,748	2.0%	
9. Air Canada	9.7%	21,957	1.2%	
10. Virgin America	161.3%	6,872	0.4%	
11. All Other Airlines	-24.6%	6,670	0.4%	
Total Commercial Passengers		-1.1%	1,833,706	100.0%

National	Top Airlines*	Passengers	Market Share
	1. US Airways	817,157	44.1%
2. Delta	291,410	15.7%	
3. American	248,131	13.4%	
4. United	176,255	9.5%	
5. JetBlue	104,827	5.7%	
6. Southwest + Airtran	82,080	4.4%	
7. Frontier	58,884	3.2%	
8. Alaska	28,026	1.5%	
9. Air Canada	20,014	1.1%	
10. Spirit	18,455	1.0%	
11. All Other Airlines	8,851	0.5%	
Total Commercial Passengers		1,854,090	100.0%

Dulles	Top Airlines*	Percent Change	Passengers	Market Share
	1. United	0.1%	1,354,369	65.0%
2. Delta	-11.9%	88,707	4.3%	
3. American	-1.8%	68,808	3.3%	
4. Southwest	-10.6%	53,368	2.6%	
5. Lufthansa	8.5%	46,935	2.3%	
6. JetBlue	9.8%	45,891	2.2%	
7. Air France	8.3%	43,252	2.1%	
8. Virgin America	-23.7%	34,423	1.7%	
9. British Airways	-14.1%	34,262	1.6%	
10. US Airways	17.8%	31,945	1.5%	
11. All Other Airlines	16.1%	280,158	13.5%	
Total Commercial Passengers		1.0%	2,082,118	100.0%

Dulles	Top Airlines*	Passengers	Market Share
	1. United	1,353,214	65.6%
2. Delta	100,715	4.9%	
3. American	70,082	3.4%	
4. Southwest	59,690	2.9%	
5. Virgin America	45,121	2.2%	
6. Lufthansa	43,268	2.1%	
7. JetBlue	41,784	2.0%	
8. Air France	39,947	1.9%	
9. British Airways	39,874	1.9%	
10. US Airways	27,115	1.3%	
11. All Other Airlines	241,310	11.7%	
Total Commercial Passengers		2,062,120	100.0%

Baltimore	Top Airlines*	Percent Change	Passengers	Market Share
	1. Southwest + Airtran	-3.9%	1,459,889	69.5%
2. Delta	-4.0%	206,428	9.8%	
3. US Airways	0.4%	117,861	5.6%	
4. United + Continental	-23.7%	115,788	5.5%	
5. American	2.9%	79,478	3.8%	
6. Spirit	100.0%	49,249	2.3%	
7. JetBlue	8.2%	28,564	1.4%	
8. British Airways	0.0%	10,171	0.5%	
9. All Other Airlines	41.2%	32,707	1.6%	
Total Commercial Passengers		-1.9%	2,100,135	100.0%

Baltimore	Top Airlines*	Passengers	Market Share
	1. Southwest + Airtran	1,519,873	71.0%
2. Delta	214,985	10.0%	
3. United + Continental	151,730	7.1%	
4. US Airways	117,353	5.5%	
5. American	77,203	3.6%	
6. JetBlue	26,409	1.2%	
7. British Airways	10,174	0.5%	
8. N/A		0.0%	
9. All Other Airlines	23,164	1.1%	
Total Commercial Passengers		2,140,891	100.0%

* Includes affiliated regional carriers

Commercial Passenger Market Share Summary

Total Passengers	Aug 2013	Aug 2012	Change
National	30.5%	30.6%	-0.1%
Dulles	34.6%	34.0%	0.6%
Baltimore	34.9%	35.3%	-0.4%
Domestic Passengers			
National	34.7%	34.3%	0.4%
Dulles	26.4%	26.5%	-0.1%
Baltimore	38.9%	39.2%	-0.3%
International Passengers			
National	5.0%	5.9%	-0.8%
Dulles	84.3%	85.0%	-0.7%
Baltimore	10.7%	9.1%	1.5%

Metropolitan Washington Airports Authority
Ronald Reagan Washington National Airport
Monthly Air Traffic Summary Report
August 2013

Description	Enplaned	Deplaned	Total	Year Ago	% Change
Aircraft Operations					
Commercial:					
Air Carrier:					
Domestic			10,746	11,088	- 3.1
International			60	60	0.0
Transborder			0	229	- 100.0
Total - Air Carrier			10,806	11,377	- 5.0
Regional:					
Domestic			13,354	12,599	6.0
International			44	51	- 13.7
Transborder			759	907	- 16.3
Total - Regional			14,157	13,557	4.4
Commercial:					
Domestic			24,100	23,687	1.7
Transborder			863	1,247	- 30.8
Total - Commercial			24,963	24,934	0.1
Non-Commercial:					
General Aviation			248	379	- 34.6
Military			288	96	200.0
Total - Non-Commercial			536	475	12.8
Grand Total - Aircraft Operations			25,499	25,409	0.4
Passengers					
Commercial:					
Air Carrier Domestic:					
Scheduled	600,040	601,359	1,201,399	1,258,075	- 4.5
Chartered	0	0	0	0	0.0
Total - Domestic Air Carrier	600,040	601,359	1,201,399	1,258,075	- 4.5
Air Carrier International:					
Scheduled	2,818	3,194	6,012	6,629	- 9.3
Chartered	0	0	0	0	0.0
Total - International Air Carrier	2,818	3,194	6,012	6,629	- 9.3
Air Carrier Transborder:					
Scheduled	0	0	0	12,164	- 100.0
Chartered	0	0	0	0	0.0
Total - Transborder Air Carrier	0	0	0	12,164	- 100.0
Total - Air Carrier	602,858	604,553	1,207,411	1,276,868	- 5.4
Regional:					
Domestic	297,927	291,318	589,245	549,953	7.1
International	1,531	1,657	3,188	3,630	- 12.2
Transborder	17,260	16,602	33,862	23,639	43.2
Total - Regional	316,718	309,577	626,295	577,222	8.5
Commercial:					
Domestic	897,967	892,677	1,790,644	1,808,028	- 1.0
Transborder	21,609	21,453	43,062	46,062	- 6.5
Total - Commercial	919,576	914,130	1,833,706	1,854,090	- 1.1
Non-Commercial:					
General Aviation	180	150	330	112	194.6
Military	210	218	428	608	- 29.6
Total - Non-Commercial	390	368	758	720	5.3
Grand Total - Passengers	919,966	914,498	1,834,464	1,854,810	- 1.1

**Metropolitan Washington Airports Authority
Ronald Reagan Washington National Airport
Monthly Air Traffic Summary Report
August 2013**

Description	Enplaned	Deplaned	Total	Year Ago	% Change
Cargo - Tonnes					
Mail:					
Domestic	5	7	12	2	714.2
International	0	0	0	0	0.0
Transborder	0	0	0	0	0.0
Total - Mail:	5	7	12	2	714.2
Freight + Express:					
Domestic	71	74	146	561	- 74.0
International	0	0	0	0	0.0
Transborder	0	0	0	0	100.0
Total - Freight + Express:	71	74	146	561	- 74.0
Mail Plus Freight + Express:					
Domestic	76	82	158	562	- 71.9
Transborder	0	0	0	0	100.0
Grand Total - Cargo	76	82	158	562	- 71.9

NOTE: Figures may not sum to total due to rounding.

Metropolitan Washington Airports Authority
Ronald Reagan Washington National Airport
Monthly Air Traffic Summary Report
January 2013 - August 2013

Description	Enplaned	Deplaned	Total	Year Ago	% Change
Aircraft Operations					
Commercial:					
Air Carrier:					
Domestic			83,759	82,197	1.9
International			308	288	6.9
Transborder			1,108	1,744	- 36.5
Total - Air Carrier			85,175	84,229	1.1
Regional:					
Domestic			101,463	98,488	3.0
International			323	401	- 19.5
Transborder			5,116	4,153	23.2
Total - Regional			106,902	103,042	3.7
Commercial:					
Domestic			185,222	180,685	2.5
Transborder			6,855	6,586	4.1
Total - Commercial			192,077	187,271	2.6
Non-Commercial:					
General Aviation			3,448	4,290	- 19.6
Military			1,545	1,215	27.2
Total - Non-Commercial			4,993	5,505	- 9.3
Grand Total - Aircraft Operations			197,070	192,776	2.2
Passengers					
Commercial:					
Air Carrier Domestic:					
Scheduled	4,572,358	4,610,604	9,182,962	8,923,864	2.9
Chartered	0	0	0	0	0.0
Total - Domestic Air Carrier	4,572,358	4,610,604	9,182,962	8,923,864	2.9
Air Carrier International:					
Scheduled	14,536	13,932	28,468	28,351	0.4
Chartered	0	0	0	0	0.0
Total - International Air Carrier	14,536	13,932	28,468	28,351	0.4
Air Carrier Transborder:					
Scheduled	25,495	26,293	51,788	78,597	- 34.1
Chartered	0	0	0	0	0.0
Total - Transborder Air Carrier	25,495	26,293	51,788	78,597	- 34.1
Total - Air Carrier	4,612,389	4,650,829	9,263,218	9,030,812	2.6
Regional:					
Domestic	2,191,252	2,185,515	4,376,767	3,891,952	12.5
International	10,560	10,203	20,763	25,612	- 18.9
Transborder	94,941	88,849	183,790	100,827	82.3
Total - Regional	2,296,753	2,284,567	4,581,320	4,018,391	14.0
Commercial:					
Domestic	6,763,610	6,796,119	13,559,729	12,815,816	5.8
Transborder	145,532	139,277	284,809	233,387	22.0
Total - Commercial	6,909,142	6,935,396	13,844,538	13,049,203	6.1
Non-Commercial:					
General Aviation	4,797	4,635	9,432	8,219	14.8
Military	2,608	2,595	5,203	8,805	- 40.9
Total - Non-Commercial	7,405	7,230	14,635	17,024	- 14.0
Grand Total - Passengers	6,916,547	6,942,626	13,859,173	13,066,227	6.1

Metropolitan Washington Airports Authority
Ronald Reagan Washington National Airport
Monthly Air Traffic Summary Report
January 2013 - August 2013

Description	Enplaned	Deplaned	Total	Year Ago	% Change
Cargo - Tonnes					
Mail:					
Domestic	5	8	13	5	174.0
International	0	0	0	0	0.0
Transborder	0	0	0	0	- 100.0
Total - Mail:	5	8	13	5	174.0
Freight + Express:					
Domestic	830	533	1,362	3,897	- 65.0
International	0	0	0	0	2,081.8
Transborder	1	0	1	0	100.0
Total - Freight + Express:	831	533	1,364	3,897	- 65.0
Mail Plus Freight + Express:					
Domestic	835	540	1,375	3,901	- 64.8
Transborder	1	0	1	0	21,746.2
Grand Total - Cargo	836	541	1,377	3,901	- 64.7

NOTE: Figures may not sum to total due to rounding.

Metropolitan Washington Airports Authority
Ronald Reagan Washington National Airport
Monthly Air Traffic Summary Report
September 2012 - August 2013

Description	Enplaned	Deplaned	Total	Year Ago	% Change
Aircraft Operations					
Commercial:					
Air Carrier:					
Domestic			124,344	121,528	2.3
International			336	310	8.4
Transborder			1,986	2,610	- 23.9
Total - Air Carrier			126,666	124,448	1.8
Regional:					
Domestic			149,828	148,486	0.9
International			399	525	- 24.0
Transborder			8,081	5,336	51.4
Total - Regional			158,308	154,347	2.6
Commercial:					
Domestic			274,172	270,014	1.5
Transborder			10,802	8,781	23.0
Total - Commercial			284,974	278,795	2.2
Non-Commercial:					
General Aviation			5,599	6,041	- 7.3
Military			1,897	1,437	32.0
Total - Non-Commercial			7,496	7,478	0.2
Grand Total - Aircraft Operations			292,470	286,273	2.2
Passengers					
Commercial:					
Air Carrier Domestic:					
Scheduled	6,743,432	6,779,841	13,523,273	13,027,818	3.8
Chartered	0	0	0	0	0.0
Total - Domestic Air Carrier	6,743,432	6,779,841	13,523,273	13,027,818	3.8
Air Carrier International:					
Scheduled	16,432	15,100	31,532	30,657	2.9
Chartered	0	0	0	0	0.0
Total - International Air Carrier	16,432	15,100	31,532	30,657	2.9
Air Carrier Transborder:					
Scheduled	44,966	47,833	92,799	115,480	- 19.6
Chartered	0	0	0	0	0.0
Total - Transborder Air Carrier	44,966	47,833	92,799	115,480	- 19.6
Total - Air Carrier	6,804,830	6,842,774	13,647,604	13,173,955	3.6
Regional:					
Domestic	3,247,834	3,239,821	6,487,655	5,903,477	9.9
International	12,649	12,302	24,951	33,228	- 24.9
Transborder	135,642	129,696	265,338	131,726	101.4
Total - Regional	3,396,125	3,381,819	6,777,944	6,068,431	11.7
Commercial:					
Domestic	9,991,266	10,019,662	20,010,928	18,931,295	5.7
Transborder	209,689	204,931	414,620	311,091	33.3
Total - Commercial	10,200,955	10,224,593	20,425,548	19,242,386	6.1
Non-Commercial:					
General Aviation	7,348	7,091	14,439	12,369	16.7
Military	4,184	4,215	8,399	11,794	- 28.8
Total - Non-Commercial	11,532	11,306	22,838	24,163	- 5.5
Grand Total - Passengers	10,212,487	10,235,899	20,448,386	19,266,549	6.1

Metropolitan Washington Airports Authority
Ronald Reagan Washington National Airport
Monthly Air Traffic Summary Report
September 2012 - August 2013

Description	Enplaned	Deplaned	Total	Year Ago	% Change
Cargo - Tonnes					
Mail:					
Domestic	7	8	15	6	138.2
International	0	0	0	0	0.0
Transborder	0	0	0	0	- 87.3
Total - Mail:	7	8	15	6	132.0
Freight + Express:					
Domestic	1,554	1,869	3,424	6,029	- 43.2
International	0	0	0	0	2,190.9
Transborder	1	0	2	0	100.0
Total - Freight + Express:	1,555	1,870	3,425	6,029	- 43.2
Mail Plus Freight + Express:					
Domestic	1,561	1,878	3,439	6,036	- 43.0
Transborder	1	0	2	0	863.7
Grand Total - Cargo	1,562	1,878	3,440	6,036	- 43.0

NOTE: Figures may not sum to total due to rounding.

Metropolitan Washington Airports Authority
Washington Dulles International Airport
Monthly Air Traffic Summary Report
August 2013

Description	Enplaned	Deplaned	Total	Year Ago	% Change
Aircraft Operations					
Commercial:					
Air Carrier:					
Domestic			6,677	6,984	- 4.4
International			3,302	3,121	5.8
Transborder			0	0	0.0
Total - Air Carrier			9,979	10,105	- 1.2
Regional:					
Domestic			12,760	12,234	4.3
International			0	0	0.0
Transborder			987	1,088	- 9.3
Total - Regional			13,747	13,322	3.2
Commercial:					
Domestic			19,437	19,218	1.1
International			4,289	4,209	1.9
Total - Commercial			23,726	23,427	1.3
Non-Commercial:					
General Aviation			2,660	2,708	- 1.8
Military			84	41	104.9
Total - Non-Commercial			2,744	2,749	- 0.2
Grand Total - Aircraft Operations			26,470	26,176	1.1
Passengers					
Commercial:					
Air Carrier Domestic:					
Scheduled	410,648	419,853	830,501	866,743	- 4.2
Chartered	947	746	1,693	1,352	25.2
Total - Domestic Air Carrier	411,595	420,599	832,194	868,095	- 4.1
Air Carrier International:					
Scheduled	317,392	354,469	671,861	618,543	8.6
Chartered	65	0	65	1,093	- 94.1
Total - International Air Carrier	317,457	354,469	671,926	619,636	8.4
Air Carrier Transborder:					
Scheduled	0	0	0	0	0.0
Chartered	0	0	0	0	0.0
Total - Transborder Air Carrier	0	0	0	0	0.0
Total - Air Carrier	729,052	775,068	1,504,120	1,487,731	1.1
Regional:					
Domestic	271,696	258,485	530,181	528,652	0.3
International	0	0	0	0	0.0
Transborder	23,525	24,292	47,817	45,737	4.5
Total - Regional	295,221	282,777	577,998	574,389	0.6
Commercial:					
Domestic	683,291	679,084	1,362,375	1,396,747	- 2.5
International	340,982	378,761	719,743	665,373	8.2
Total - Commercial	1,024,273	1,057,845	2,082,118	2,062,120	1.0
Non-Commercial:					
General Aviation	4,420	4,428	8,848	9,591	- 7.7
Military	17	17	34	0	100.0
Total - Non-Commercial	4,437	4,445	8,882	9,591	- 7.4
Grand Total - Passengers	1,028,710	1,062,290	2,091,000	2,071,711	0.9

Metropolitan Washington Airports Authority
Washington Dulles International Airport
Monthly Air Traffic Summary Report
August 2013

Description	Enplaned	Deplaned	Total	Year Ago	% Change
Cargo - Tonnes					
Mail:					
Domestic	106	305	411	327	25.7
International	726	730	1,456	380	283.0
Total - Mail:	832	1,035	1,867	707	164.0
Freight + Express:					
Domestic	4,055	3,097	7,152	9,055	- 21.0
International	4,073	7,137	11,211	12,120	- 7.5
Total - Freight + Express:	8,128	10,235	18,363	21,175	- 13.3
Mail Plus Freight + Express:					
Domestic	4,161	3,402	7,564	9,382	- 19.4
International	4,799	7,868	12,667	12,500	1.3
Grand Total - Cargo	8,960	11,270	20,230	21,883	- 7.6

NOTE: Figures may not sum to total due to rounding.

Metropolitan Washington Airports Authority
Washington Dulles International Airport
Monthly Air Traffic Summary Report
January 2013 - August 2013

Description	Enplaned	Deplaned	Total	Year Ago	% Change
Aircraft Operations					
Commercial:					
Air Carrier:					
Domestic			49,523	55,234	- 10.3
International			24,242	23,104	4.9
Transborder			12	28	- 57.1
Total - Air Carrier			73,777	78,366	- 5.9
Regional:					
Domestic			97,225	96,869	0.4
International			0	0	0.0
Transborder			7,026	7,025	0.0
Total - Regional			104,251	103,894	0.3
Commercial:					
Domestic			146,748	152,103	- 3.5
International			31,280	30,157	3.7
Total - Commercial			178,028	182,260	- 2.3
Non-Commercial:					
General Aviation			26,872	28,306	- 5.1
Military			674	500	34.8
Total - Non-Commercial			27,546	28,806	- 4.4
Grand Total - Aircraft Operations			205,574	211,066	- 2.6
Passengers					
Commercial:					
Air Carrier Domestic:					
Scheduled	3,009,244	3,043,548	6,052,792	6,624,551	- 8.6
Chartered	6,181	6,449	12,630	13,431	- 6.0
Total - Domestic Air Carrier	3,015,425	3,049,997	6,065,422	6,637,982	- 8.6
Air Carrier International:					
Scheduled	2,190,962	2,262,417	4,453,379	4,248,917	4.8
Chartered	3,791	4,022	7,813	8,627	- 9.4
Total - International Air Carrier	2,194,753	2,266,439	4,461,192	4,257,544	4.8
Air Carrier Transborder:					
Scheduled	0	0	0	0	0.0
Chartered	161	312	473	796	- 40.6
Total - Transborder Air Carrier	161	312	473	796	- 40.6
Total - Air Carrier	5,210,339	5,316,748	10,527,087	10,896,322	- 3.4
Regional:					
Domestic	1,995,493	1,967,401	3,962,894	4,158,616	- 4.7
International	0	0	0	0	0.0
Transborder	145,948	151,647	297,595	265,329	12.2
Total - Regional	2,141,441	2,119,048	4,260,489	4,423,945	- 3.7
Commercial:					
Domestic	5,010,918	5,017,398	10,028,316	10,796,598	- 7.1
International	2,340,862	2,418,398	4,759,260	4,523,669	5.2
Total - Commercial	7,351,780	7,435,796	14,787,576	15,320,267	- 3.5
Non-Commercial:					
General Aviation	48,685	48,553	97,238	102,365	- 5.0
Military	351	360	711	488	45.7
Total - Non-Commercial	49,036	48,913	97,949	102,853	- 4.8
Grand Total - Passengers	7,400,816	7,484,709	14,885,525	15,423,120	- 3.5

Metropolitan Washington Airports Authority
Washington Dulles International Airport
Monthly Air Traffic Summary Report
January 2013 - August 2013

Description	Enplaned	Deplaned	Total	Year Ago	% Change
Cargo - Tonnes					
Mail:					
Domestic	1,159	2,210	3,369	2,873	17.3
International	2,048	1,746	3,794	2,609	45.4
Total - Mail:	3,207	3,956	7,164	5,483	30.7
Freight + Express:					
Domestic	30,560	30,070	60,630	71,788	- 15.5
International	37,055	61,010	98,064	101,235	- 3.1
Total - Freight + Express:	67,615	91,080	158,695	173,023	- 8.3
Mail Plus Freight + Express:					
Domestic	31,719	32,280	63,999	74,662	- 14.3
International	39,103	62,756	101,859	103,844	- 1.9
Grand Total - Cargo	70,822	95,036	165,858	178,506	- 7.1

NOTE: Figures may not sum to total due to rounding.

Metropolitan Washington Airports Authority
Washington Dulles International Airport
Monthly Air Traffic Summary Report
September 2012 - August 2013

Description	Enplaned	Deplaned	Total	Year Ago	% Change
Aircraft Operations					
Commercial:					
Air Carrier:					
Domestic			74,386	83,351	- 10.8
International			35,150	34,232	2.7
Transborder			13	30	- 56.7
Total - Air Carrier			109,549	117,613	- 6.9
Regional:					
Domestic			144,269	146,704	- 1.7
International			0	0	0.0
Transborder			10,735	9,801	9.5
Total - Regional			155,004	156,505	- 1.0
Commercial:					
Domestic			218,655	230,055	- 5.0
International			45,898	44,063	4.2
Total - Commercial			264,553	274,118	- 3.5
Non-Commercial:					
General Aviation			41,106	43,507	- 5.5
Military			927	647	43.3
Total - Non-Commercial			42,033	44,154	- 4.8
Grand Total - Aircraft Operations			306,586	318,272	- 3.7
Passengers					
Commercial:					
Air Carrier Domestic:					
Scheduled	4,486,503	4,543,058	9,029,561	9,943,586	- 9.2
Chartered	9,640	10,011	19,651	23,528	- 16.5
Total - Domestic Air Carrier	4,496,143	4,553,069	9,049,212	9,967,114	- 9.2
Air Carrier International:					
Scheduled	3,204,192	3,251,697	6,455,889	6,252,734	3.2
Chartered	5,885	6,174	12,059	13,379	- 9.9
Total - International Air Carrier	3,210,077	3,257,871	6,467,948	6,266,113	3.2
Air Carrier Transborder:					
Scheduled	0	0	0	0	0.0
Chartered	161	312	473	796	- 40.6
Total - Transborder Air Carrier	161	312	473	796	- 40.6
Total - Air Carrier	7,706,381	7,811,252	15,517,633	16,234,023	- 4.4
Regional:					
Domestic	2,975,956	2,941,124	5,917,080	6,248,470	- 5.3
International	0	0	0	0	0.0
Transborder	216,653	225,360	442,013	378,496	16.8
Total - Regional	3,192,609	3,166,484	6,359,093	6,626,966	- 4.0
Commercial:					
Domestic	7,472,099	7,494,193	14,966,292	16,215,584	- 7.7
International	3,426,891	3,483,543	6,910,434	6,645,405	4.0
Total - Commercial	10,898,990	10,977,736	21,876,726	22,860,989	- 4.3
Non-Commercial:					
General Aviation	73,294	74,384	147,678	154,945	- 4.7
Military	409	425	834	565	47.6
Total - Non-Commercial	73,703	74,809	148,512	155,510	- 4.5
Grand Total - Passengers	10,972,693	11,052,545	22,025,238	23,016,499	- 4.3

Metropolitan Washington Airports Authority
Washington Dulles International Airport
Monthly Air Traffic Summary Report
September 2012 - August 2013

Description	Enplaned	Deplaned	Total	Year Ago	% Change
Cargo - Tonnes					
Mail:					
Domestic	1,833	3,095	4,928	4,781	3.1
International	2,703	2,110	4,813	4,640	3.7
Total - Mail:	4,536	5,205	9,740	9,421	3.4
Freight + Express:					
Domestic	47,377	48,124	95,501	111,320	- 14.2
International	57,197	92,788	149,986	157,659	- 4.9
Total - Freight + Express:	104,574	140,913	245,487	268,979	- 8.7
Mail Plus Freight + Express:					
Domestic	49,210	51,219	100,429	116,101	- 13.5
International	59,900	94,898	154,798	162,299	- 4.6
Grand Total - Cargo	109,110	146,117	255,227	278,400	- 8.3

NOTE: Figures may not sum to total due to rounding.