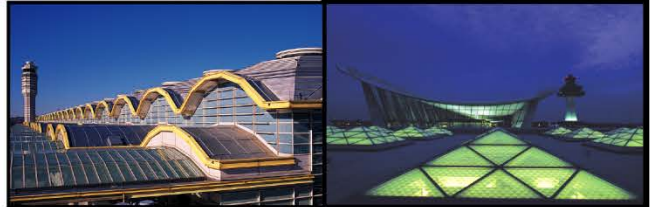


October
2014

Air Traffic Statistics



METROPOLITAN WASHINGTON AIRPORTS AUTHORITY

Air Traffic Summary October 2014

Passenger Activity (in Millions)

| | | Current Month | | | Year-to-Date | | | Last 12 Months | | |
|-------------------------|-------------------|---------------|--------|--------|--------------|--------|--------|----------------|--------|--------|
| | | DCA | IAD | System | DCA | IAD | System | DCA | IAD | System |
| Commercial Total | Passengers | 1.9 | 1.9 | 3.8 | 17.4 | 18.2 | 35.6 | 20.6 | 21.6 | 42.2 |
| | % Change | 9.3% | 2.1% | 5.6% | 1.0% | (1.7%) | (0.4%) | 0.7% | (1.9%) | (0.6%) |
| Commercial Dom | Passengers | 1.9 | 1.3 | 3.2 | 17.0 | 12.0 | 29.0 | 20.2 | 14.3 | 34.5 |
| | % Change | 9.5% | 4.1% | 7.2% | 1.1% | (3.8%) | (1.0%) | 0.8% | (4.0%) | (1.3%) |
| Commercial Int'l | Passengers | < 0.1 | 0.6 | 0.6 | 0.3 | 6.1 | 6.4 | 0.4 | 7.1 | 7.5 |
| | % Change | (1.1%) | (2.5%) | (2.4%) | (1.9%) | 2.5% | 2.3% | (2.3%) | 2.5% | 2.3% |

Note: System totals may not sum due to rounding.

U.S. industry average passenger enplanements as reported by Airlines for America (A4A):

| Enplanements | Current Month | Year-to-Date |
|---------------|---------------|--------------|
| System | 4.1% | 2.7% |
| Domestic | 4.8% | 2.6% |
| International | (0.5%) | 3.2% |

Ronald Reagan Washington National Airport

- Domestic commercial passenger activity increased 9.5% in October 2014. Significant activity by carrier follows:

| Airline | Comments |
|-----------------------|---|
| American + US Airways | <ul style="list-style-type: none"> 0.2% decrease in passenger activity Increased service to Boston in March 2014; Hartford, Los Angeles, and St. Louis in June 2014; and Columbus, Indianapolis, and Providence in September 2014 Reduced and discontinued service to a number of destinations in June and July 2014 in accordance with planned reductions in slot usage as a result of the merger |
| Southwest + AirTran | <ul style="list-style-type: none"> 112.9% increase in passenger activity as slots divested by American were taken over by Southwest New service to Kansas City in March 2014; Chicago Midway, Nashville, and New Orleans in August 2014; and Dallas-Love and Tampa in October 2014 |
| Delta | <ul style="list-style-type: none"> 15.4% increase in passenger activity Reduced service to Memphis in January 2014 New service to Madison and Omaha in February 2014 |
| JetBlue | <ul style="list-style-type: none"> 28.8% increase in passenger activity as JetBlue began utilizing slots divested by American New service to Charleston and Hartford in June 2014 Increased service to Tampa in July 2014 |

- Transborder passenger traffic decreased 1.1% in October as a result of cancelled service to Montreal on American + US Airways in June 2014.
- The combined American + US Airways operations, including its regional affiliates, had the largest commercial passenger market share with 53.2%, a decrease compared to 58.6% in October 2013.

Washington Dulles International Airport

Domestic Passenger Activity

- Domestic commercial passenger activity increased 4.1% in October 2014. Significant activity by carrier follows:

| Airline | Comments |
|----------------|--|
| United | <ul style="list-style-type: none">• 1.9% decrease in passenger activity• Discontinued service to Salt Lake City in December 2013; Albuquerque in April 2014; Ft. Lauderdale in May 2014; Binghamton in June 2014; and Miami and Colorado Springs in September 2014• Reduced service to St. Louis, Grand Rapids, and Hunstville in June 2014; Cincinnati in July 2014; Cleveland in September 2014; and New York JFK in October 2014• Increased service to Columbia in January 2014; Burlington, San Antonio, and Syracuse in March 2014; Albany in April 2014; and Greensboro and Raleigh in October 2014 |
| Frontier | <ul style="list-style-type: none">• New service to Atlanta, Charlotte, Minneapolis, Orlando, and Tampa in August 2014; Chicago O'Hare, Cincinnati, Detroit, Ft. Lauderdale, Fort Myers, Las Vegas, Memphis, St. Augustine, St. Louis in September 2014; and Cleveland in October 2014 |

International Passenger Activity

- October 2014 international commercial passenger traffic decreased 2.5%. Significant activity by carrier follows:

| Airline | Comments |
|----------------|---|
| United | <ul style="list-style-type: none">• 12.3% decrease in passenger activity• Reduced service to London and Montreal in November 2013• Discontinued service to Quebec in November 2013 and San Salvador in April 2014 |
| TACA + Avianca | <ul style="list-style-type: none">• 14.1% increase in passenger activity• Increased service to San Salvador in March 2014 |
| Austrian | <ul style="list-style-type: none">• 38.6% increase in passenger activity due to aircraft upgauging in July 2014 |
| Air China | <ul style="list-style-type: none">• New Service to Beijing began June 2014 |

- United Airlines, including its regional affiliates, had the largest commercial passenger market share of 63.2%, a decrease compared to 67.2% in October 2013.

Cargo Activity

- For the month of October 2014, total cargo increased 5.9% at Dulles from a year earlier. Domestic cargo increased 1.6% with increases on United (6.5%) and FedEx (0.4%).
- International cargo increased 8.3% due to increases on United (10.2%), All Nippon (28.0%), Korean Air (64.1%), and Qatar Amiri Air (25.2%), as well as new service by Air China.

Baltimore-Washington International Airport

- Current month commercial passenger activity vs. October 2013 increased 0.4%.
- BWI passenger activity outpaced activity at Dulles by 53.2k commercial passengers (2.8%) and National by 24.4k passengers (1.3%).
- Southwest continues to have the largest passenger market share with 70.9%, up from 70.0% in October 2013.
- Cargo activity at BWI totaled 9.7k metric tonnes, a 1.4% increase from a year earlier. Activity on BWI's largest cargo carrier, FedEx, declined 5.8% from October 2013.

Ronald Reagan Washington National Airport
 Air Traffic Schedule Activity
 October 2014 vs. October 2013

| October 2014: | Daily Departures | Airlines* | Unduplicated Destinations |
|--|---------------------|-----------|------------------------------|
| Domestic Passenger service information - | | | |
| Mainline | 194 | 9 | -- |
| Regional Affiliate | <u>191</u> | <u>10</u> | -- |
| Domestic Total | 385 | 19 | 81 |
| Transborder/International Passenger service information - | | | |
| Mainline | 1 | 1 | -- |
| Regional Affiliate | <u>10</u> | <u>3</u> | -- |
| Transborder/International Total | 11 | 4 | 4 |

| October 2013: | Daily Departures | Airlines* | Unduplicated Destinations |
|--|---------------------|-----------|------------------------------|
| Domestic Passenger service information - | | | |
| Mainline | 172 | 9 | -- |
| Regional Affiliate | <u>221</u> | <u>9</u> | -- |
| Domestic Total | 393 | 18 | 85 |
| Transborder/International Passenger service information - | | | |
| Mainline | 0 | 0 | -- |
| Regional Affiliate | <u>13</u> | <u>4</u> | -- |
| Transborder/International Total | 13 | 4 | 4 |

* The following airlines are counted as one airline:
 Southwest and AirTran
 American and US Airways
 Regional carriers flying for multiple mainline carriers

Source: DIIO, November 24, 2014

Washington Dulles International Airport

Air Traffic Schedule Activity
October 2014 vs. October 2013

| October 2014: | Daily Departures | Airlines* | Unduplicated Destinations |
|--|---------------------|-----------|------------------------------|
| Domestic | | | |
| Passenger service information - | | | |
| Mainline | 106 | 9 | -- |
| Regional Affiliate | <u>188</u> | <u>11</u> | -- |
| Domestic Total | 294 | 20 | 85 |
| Transborder/International | | | |
| Passenger service information - | | | |
| Mainline | 50 | 24 | -- |
| Regional Affiliate | <u>12</u> | <u>4</u> | -- |
| Transborder/International Total | 62 | 28 | 41 |

| October 2013: | Daily Departures | Airlines | Unduplicated Destinations |
|--|---------------------|-----------|------------------------------|
| Domestic | | | |
| Passenger service information - | | | |
| Mainline | 106 | 7 | -- |
| Regional Affiliate | <u>195</u> | <u>13</u> | -- |
| Domestic Total | 301 | 20 | 83 |
| Transborder/International | | | |
| Passenger service information - | | | |
| Mainline | 50 | 23 | -- |
| Regional Affiliate | <u>15</u> | <u>5</u> | -- |
| Transborder/International Total | 65 | 28 | 39 |

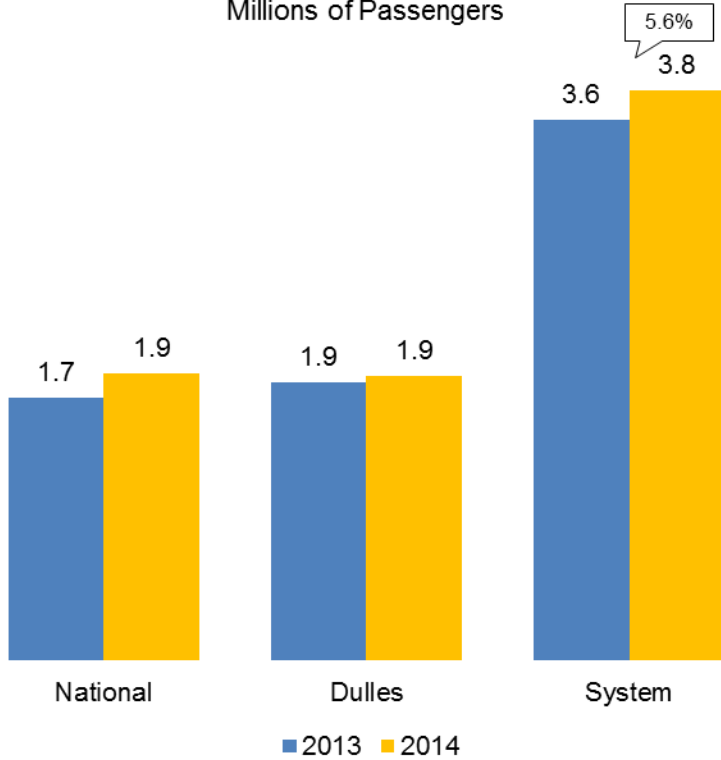
* The following airlines are counted as one airline:
Pacific Wings and Sun Air International
Avianca and TACA
American Airlines and US Airways
Austrian and Tyrolean
Regional carriers flying for multiple mainline carriers

Source: DIIO, November 24, 2014

Passenger Trends

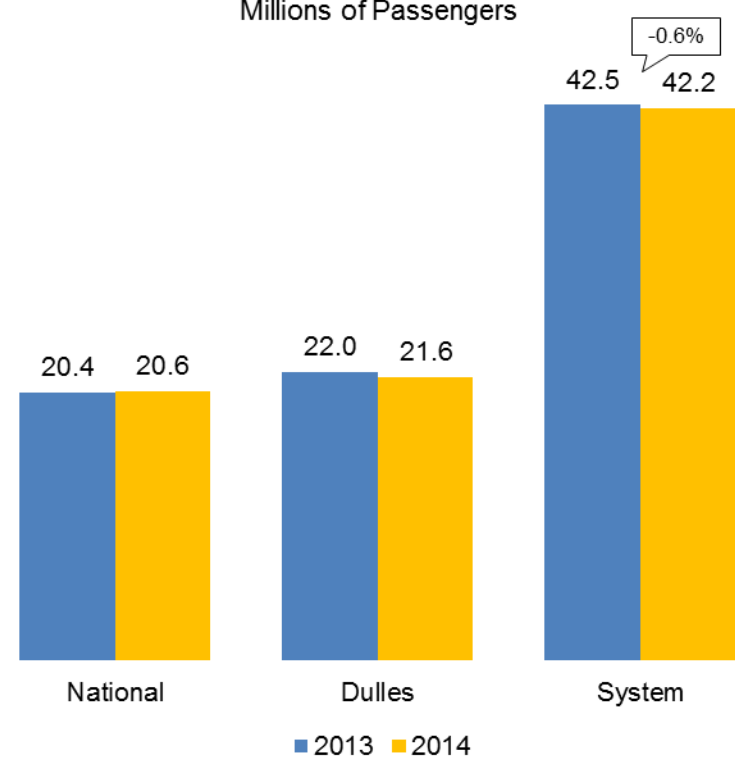
October 2014 Comparison

Millions of Passengers



Last 12-Months Comparison

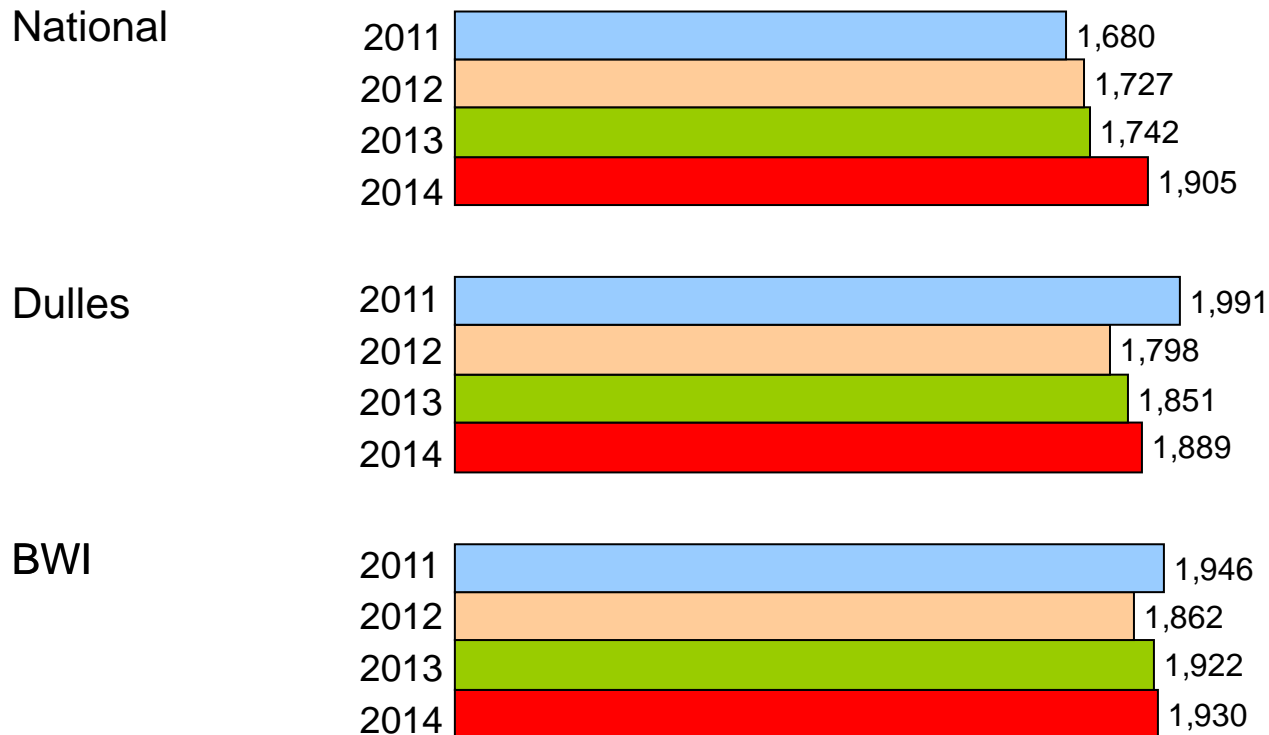
Millions of Passengers



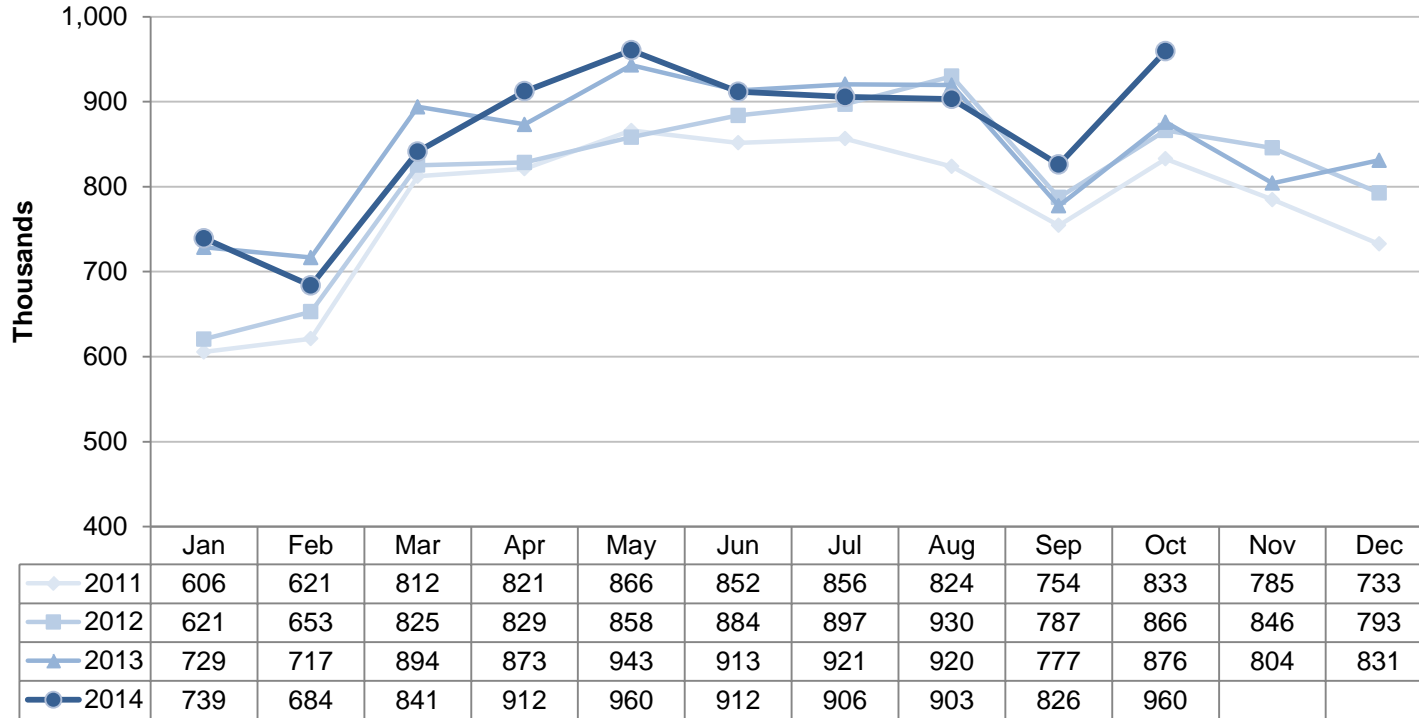
* System totals may not sum due to rounding.

Total Passengers

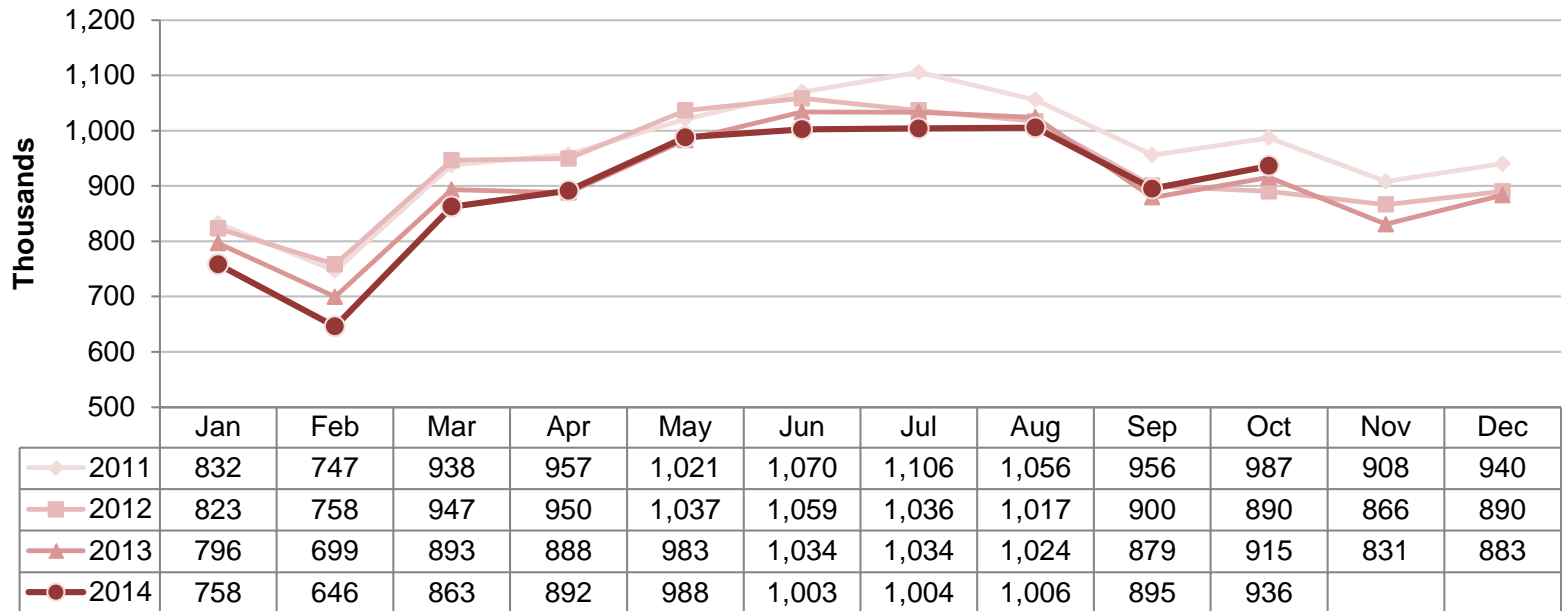
Four Year Comparison of the Month of October (Thousands)



Ronald Reagan Washington National Airport
 Total Commercial Passenger Enplanements
 Calendar Years 2011 - 2014



Dulles International Airport
Total Commercial Passenger Enplanements
Calendar Years 2011 - 2014



**Commercial Passenger Market Share and Percent Change of Top Airlines
in the Washington and Baltimore Region**

October 2014

| | October 2014 | | October 2013 | |
|-----------------------------|----------------|------------|--------------|--------------|
| | Percent Change | Passengers | Passengers | Market Share |
| National | | | | |
| Top Airlines* | | | | |
| 1. American + US Airways | -0.7% | 1,011,603 | 1,018,744 | 53.2% |
| 2. Delta | 15.4% | 287,382 | 248,933 | 15.1% |
| 3. Southwest + Airtran | 112.9% | 194,474 | 162,617 | 10.2% |
| 4. United | 0.2% | 162,907 | 105,749 | 8.6% |
| 5. JetBlue | 28.8% | 136,196 | 91,333 | 7.2% |
| 6. Alaska | 11.2% | 37,168 | 40,821 | 2.0% |
| 7. Frontier | -37.5% | 25,515 | 33,434 | 1.3% |
| 8. Air Canada | 2.8% | 21,138 | 20,554 | 1.1% |
| 9. Virgin America | 108.6% | 15,364 | 10,394 | 0.8% |
| 10. Sun Country | -3.2% | 10,058 | 7,364 | 0.5% |
| Total Commercial Passengers | 9.3% | 1,901,805 | 1,739,943 | 100.0% |

October 2013

| | October 2014 | | October 2013 | |
|-----------------------------|----------------|------------|--------------|--------------|
| | Percent Change | Passengers | Passengers | Market Share |
| Dulles | | | | |
| Top Airlines* | | | | |
| 1. United | -4.0% | 1,183,482 | 1,233,069 | 67.2% |
| 2. American + US Airways | 6.7% | 87,578 | 82,103 | 4.7% |
| 3. Frontier | N/A | 84,205 | 76,323 | 4.5% |
| 4. Delta | 3.1% | 78,662 | 51,419 | 4.2% |
| 5. Southwest | -19.7% | 41,298 | 38,281 | 2.2% |
| 6. British Airways | 2.3% | 36,916 | 36,084 | 2.0% |
| 7. Lufthansa | 1.8% | 36,458 | 35,826 | 2.0% |
| 8. Virgin America | 2.7% | 30,418 | 29,623 | 1.6% |
| 9. Air France | 3.5% | 30,095 | 29,085 | 1.6% |
| 10. JetBlue | -31.1% | 26,363 | 21,477 | 1.4% |
| 11. All Other Airlines | 17.6% | 237,507 | 201,989 | 12.7% |
| Total Commercial Passengers | 2.1% | 1,872,982 | 1,835,279 | 100.0% |

| | October 2014 | | October 2013 | |
|-----------------------------|----------------|------------|--------------|--------------|
| | Percent Change | Passengers | Passengers | Market Share |
| Baltimore | | | | |
| Top Airlines* | | | | |
| 1. Southwest + Airtran | 1.8% | 1,365,848 | 1,342,042 | 70.9% |
| 2. Delta | -5.9% | 172,893 | 183,681 | 9.0% |
| 3. American + US Airways | -2.0% | 178,337 | 181,964 | 9.3% |
| 4. United + Continental | -25.5% | 84,932 | 114,036 | 4.4% |
| 5. Spirit | 45.1% | 54,831 | 37,776 | 2.8% |
| 6. JetBlue | 3.9% | 27,860 | 26,822 | 1.4% |
| 7. British Airways | 1.7% | 10,488 | 10,312 | 0.5% |
| 8. All Other Airlines | 46.6% | 31,011 | 21,157 | 1.6% |
| Total Commercial Passengers | 0.4% | 1,926,200 | 1,917,790 | 100.0% |

| | October 2014 | | October 2013 | |
|-----------------------------|----------------|------------|--------------|--------------|
| | Percent Change | Passengers | Passengers | Market Share |
| Baltimore | | | | |
| Top Airlines* | | | | |
| 1. Southwest + Airtran | 1.8% | 1,365,848 | 1,342,042 | 70.9% |
| 2. Delta | -5.9% | 172,893 | 183,681 | 9.0% |
| 3. American + US Airways | -2.0% | 178,337 | 181,964 | 9.3% |
| 4. United + Continental | -25.5% | 84,932 | 114,036 | 4.4% |
| 5. Spirit | 45.1% | 54,831 | 37,776 | 2.8% |
| 6. JetBlue | 3.9% | 27,860 | 26,822 | 1.4% |
| 7. British Airways | 1.7% | 10,488 | 10,312 | 0.5% |
| 8. All Other Airlines | 46.6% | 31,011 | 21,157 | 1.6% |
| Total Commercial Passengers | 0.4% | 1,926,200 | 1,917,790 | 100.0% |

* Includes affiliated regional carriers

Commercial Passenger Market Share Summary

| Total Passengers | Oct 2014 | Oct 2013 | Change |
|---------------------------------|-----------------|-----------------|---------------|
| National | 33.4% | 31.7% | 1.7% |
| Dulles | 32.9% | 33.4% | -0.6% |
| Baltimore | 33.8% | 34.9% | -1.1% |
| Domestic Passengers | Oct 2014 | Oct 2013 | Change |
| National | 38.0% | 36.7% | 1.3% |
| Dulles | 26.6% | 27.1% | -0.4% |
| Baltimore | 35.4% | 36.3% | -0.9% |
| International Passengers | Oct 2014 | Oct 2013 | Change |
| National | 4.8% | 4.8% | 0.0% |
| Dulles | 85.1% | 85.8% | -0.8% |
| Baltimore | 10.2% | 9.4% | 0.7% |

Totals may not sum due to rounding.

Metropolitan Washington Airports Authority
Ronald Reagan Washington National Airport
Monthly Air Traffic Summary Report
October 2014

| Description | Enplaned | Deplaned | Total | Year Ago | % Change |
|--|----------------|----------------|------------------|------------------|---------------|
| Aircraft Operations | | | | | |
| Commercial: | | | | | |
| Air Carrier: | | | | | |
| Domestic | | | 11,970 | 10,672 | 12.2 |
| International | | | 62 | 0 | 100.0 |
| Transborder | | | 0 | 0 | 0.0 |
| Total - Air Carrier | | | 12,032 | 10,672 | 12.7 |
| Regional: | | | | | |
| Domestic | | | 11,714 | 13,573 | - 13.7 |
| International | | | 0 | 10 | - 100.0 |
| Transborder | | | 643 | 760 | - 15.4 |
| Total - Regional | | | 12,357 | 14,343 | - 13.8 |
| Commercial: | | | | | |
| Domestic | | | 23,684 | 24,245 | - 2.3 |
| Transborder | | | 705 | 770 | - 8.4 |
| Total - Commercial | | | 24,389 | 25,015 | - 2.5 |
| Non-Commercial: | | | | | |
| General Aviation | | | 305 | 401 | - 23.9 |
| Military | | | 310 | 228 | 36.0 |
| Total - Non-Commercial | | | 615 | 629 | - 2.2 |
| Grand Total - Aircraft Operations | | | 25,004 | 25,644 | - 2.5 |
| Passengers | | | | | |
| Commercial: | | | | | |
| Air Carrier Domestic: | | | | | |
| Scheduled | 658,097 | 642,601 | 1,300,698 | 1,123,357 | 15.8 |
| Chartered | 0 | 0 | 0 | 0 | 0.0 |
| Total - Domestic Air Carrier | 658,097 | 642,601 | 1,300,698 | 1,123,357 | 15.8 |
| Air Carrier International: | | | | | |
| Scheduled | 1,927 | 1,823 | 3,750 | 0 | 100.0 |
| Chartered | 0 | 0 | 0 | 0 | 0.0 |
| Total - International Air Carrier | 1,927 | 1,823 | 3,750 | 0 | 100.0 |
| Air Carrier Transborder: | | | | | |
| Scheduled | 0 | 0 | 0 | 0 | 0.0 |
| Chartered | 0 | 0 | 0 | 0 | 0.0 |
| Total - Transborder Air Carrier | 0 | 0 | 0 | 0 | 0.0 |
| Total - Air Carrier | 660,024 | 644,424 | 1,304,448 | 1,123,357 | 16.1 |
| Regional: | | | | | |
| Domestic | 285,913 | 283,738 | 569,651 | 584,774 | - 2.6 |
| International | 0 | 0 | 0 | 329 | - 100.0 |
| Transborder | 13,676 | 14,030 | 27,706 | 31,483 | - 12.0 |
| Total - Regional | 299,589 | 297,768 | 597,357 | 616,586 | - 3.1 |
| Commercial: | | | | | |
| Domestic | 944,010 | 926,339 | 1,870,349 | 1,708,131 | 9.5 |
| Transborder | 15,603 | 15,853 | 31,456 | 31,812 | - 1.1 |
| Total - Commercial | 959,613 | 942,192 | 1,901,805 | 1,739,943 | 9.3 |
| Non-Commercial: | | | | | |
| General Aviation | 1,366 | 1,305 | 2,671 | 1,760 | 51.8 |
| Military | 348 | 352 | 700 | 645 | 8.5 |
| Total - Non-Commercial | 1,714 | 1,657 | 3,371 | 2,405 | 40.2 |
| Grand Total - Passengers | 961,327 | 943,849 | 1,905,176 | 1,742,348 | 9.3 |

**Metropolitan Washington Airports Authority
Ronald Reagan Washington National Airport
Monthly Air Traffic Summary Report
October 2014**

| Description | Enplaned | Deplaned | Total | Year Ago | % Change |
|-----------------------------------|-----------------|-----------------|--------------|-----------------|-----------------|
| Cargo - Tonnes | | | | | |
| Mail: | | | | | |
| Domestic | 24 | 1 | 25 | 0 | 17,646.0 |
| International | 0 | 0 | 0 | 0 | 0.0 |
| Transborder | 0 | 0 | 0 | 0 | 0.0 |
| Total - Mail: | 24 | 1 | 25 | 0 | 17,646.0 |
| Freight + Express: | | | | | |
| Domestic | 90 | 59 | 149 | 118 | 26.4 |
| International | 0 | 0 | 0 | 0 | 0.0 |
| Transborder | 0 | 0 | 0 | 0 | - 100.0 |
| Total - Freight + Express: | 90 | 59 | 149 | 118 | 26.3 |
| Mail Plus Freight + Express: | | | | | |
| Domestic | 114 | 60 | 174 | 118 | 47.4 |
| Transborder | 0 | 0 | 0 | 0 | - 100.0 |
| Grand Total - Cargo | 114 | 60 | 174 | 118 | 47.2 |

NOTE: Figures may not sum to total due to rounding.

Metropolitan Washington Airports Authority
Ronald Reagan Washington National Airport
Monthly Air Traffic Summary Report
January 2014 - October 2014

| Description | Enplaned | Deplaned | Total | Year Ago | % Change |
|--|------------------|------------------|-------------------|-------------------|----------------|
| Aircraft Operations | | | | | |
| Commercial: | | | | | |
| Air Carrier: | | | | | |
| Domestic | | | 102,731 | 104,462 | - 1.7 |
| International | | | 574 | 310 | 85.2 |
| Transborder | | | 0 | 1,108 | - 100.0 |
| Total - Air Carrier | | | 103,305 | 105,880 | - 2.4 |
| Regional: | | | | | |
| Domestic | | | 120,077 | 127,751 | - 6.0 |
| International | | | 162 | 337 | - 51.9 |
| Transborder | | | 6,735 | 6,602 | 2.0 |
| Total - Regional | | | 126,974 | 134,690 | - 5.7 |
| Commercial: | | | | | |
| Domestic | | | 222,808 | 232,213 | - 4.1 |
| Transborder | | | 7,471 | 8,357 | - 10.6 |
| Total - Commercial | | | 230,279 | 240,570 | - 4.3 |
| Non-Commercial: | | | | | |
| General Aviation | | | 3,242 | 4,230 | - 23.4 |
| Military | | | 2,356 | 2,029 | 16.1 |
| Total - Non-Commercial | | | 5,598 | 6,259 | - 10.6 |
| Grand Total - Aircraft Operations | | | 235,877 | 246,829 | - 4.4 |
| Passengers | | | | | |
| Commercial: | | | | | |
| Air Carrier Domestic: | | | | | |
| Scheduled | 5,700,607 | 5,732,913 | 11,433,520 | 11,329,440 | 0.9 |
| Chartered | 0 | 0 | 0 | 0 | 0.0 |
| Total - Domestic Air Carrier | 5,700,607 | 5,732,913 | 11,433,520 | 11,329,440 | 0.9 |
| Air Carrier International: | | | | | |
| Scheduled | 24,380 | 24,042 | 48,422 | 28,779 | 68.3 |
| Chartered | 0 | 0 | 0 | 0 | 0.0 |
| Total - International Air Carrier | 24,380 | 24,042 | 48,422 | 28,779 | 68.3 |
| Air Carrier Transborder: | | | | | |
| Scheduled | 0 | 0 | 0 | 51,788 | - 100.0 |
| Chartered | 0 | 0 | 0 | 0 | 0.0 |
| Total - Transborder Air Carrier | 0 | 0 | 0 | 51,788 | - 100.0 |
| Total - Air Carrier | 5,724,987 | 5,756,955 | 11,481,942 | 11,410,007 | 0.6 |
| Regional: | | | | | |
| Domestic | 2,771,469 | 2,794,208 | 5,565,677 | 5,492,962 | 1.3 |
| International | 4,877 | 4,766 | 9,643 | 21,297 | - 54.7 |
| Transborder | 141,861 | 137,475 | 279,336 | 242,020 | 15.4 |
| Total - Regional | 2,918,207 | 2,936,449 | 5,854,656 | 5,756,279 | 1.7 |
| Commercial: | | | | | |
| Domestic | 8,472,076 | 8,527,121 | 16,999,197 | 16,822,402 | 1.1 |
| Transborder | 171,118 | 166,283 | 337,401 | 343,884 | - 1.9 |
| Total - Commercial | 8,643,194 | 8,693,404 | 17,336,598 | 17,166,286 | 1.0 |
| Non-Commercial: | | | | | |
| General Aviation | 7,905 | 7,708 | 15,613 | 12,778 | 22.2 |
| Military | 3,044 | 2,964 | 6,008 | 6,488 | - 7.4 |
| Total - Non-Commercial | 10,949 | 10,672 | 21,621 | 19,266 | 12.2 |
| Grand Total - Passengers | 8,654,143 | 8,704,076 | 17,358,219 | 17,185,552 | 1.0 |

Metropolitan Washington Airports Authority
Ronald Reagan Washington National Airport
Monthly Air Traffic Summary Report
January 2014 - October 2014

| Description | Enplaned | Deplaned | Total | Year Ago | % Change |
|-----------------------------------|-----------------|-----------------|--------------|-----------------|-----------------|
| Cargo - Tonnes | | | | | |
| Mail: | | | | | |
| Domestic | 261 | 29 | 290 | 14 | 1,972.9 |
| International | 0 | 0 | 0 | 0 | 0.0 |
| Transborder | 0 | 0 | 0 | 0 | 0.0 |
| Total - Mail: | 261 | 29 | 290 | 14 | 1,972.9 |
| Freight + Express: | | | | | |
| Domestic | 852 | 625 | 1,477 | 1,598 | - 7.5 |
| International | 0 | 0 | 0 | 0 | - 100.0 |
| Transborder | 0 | 0 | 1 | 1 | - 33.6 |
| Total - Freight + Express: | 853 | 625 | 1,478 | 1,599 | - 7.6 |
| Mail Plus Freight + Express: | | | | | |
| Domestic | 1,113 | 654 | 1,768 | 1,612 | 9.7 |
| Transborder | 0 | 0 | 1 | 1 | - 38.8 |
| Grand Total - Cargo | 1,114 | 655 | 1,768 | 1,613 | 9.6 |

NOTE: Figures may not sum to total due to rounding.

Metropolitan Washington Airports Authority
Ronald Reagan Washington National Airport
Monthly Air Traffic Summary Report
November 2013 - October 2014

| Description | Enplaned | Deplaned | Total | Year Ago | % Change |
|--|-------------------|-------------------|-------------------|-------------------|----------------|
| Aircraft Operations | | | | | |
| Commercial: | | | | | |
| Air Carrier: | | | | | |
| Domestic | | | 121,469 | 124,543 | - 2.5 |
| International | | | 598 | 334 | 79.0 |
| Transborder | | | 0 | 1,542 | - 100.0 |
| Total - Air Carrier | | | 122,067 | 126,419 | - 3.4 |
| Regional: | | | | | |
| Domestic | | | 144,524 | 152,129 | - 5.0 |
| International | | | 231 | 399 | - 42.1 |
| Transborder | | | 8,125 | 7,939 | 2.3 |
| Total - Regional | | | 152,880 | 160,467 | - 4.7 |
| Commercial: | | | | | |
| Domestic | | | 265,993 | 276,672 | - 3.9 |
| Transborder | | | 8,954 | 10,214 | - 12.3 |
| Total - Commercial | | | 274,947 | 286,886 | - 4.2 |
| Non-Commercial: | | | | | |
| General Aviation | | | 4,069 | 5,353 | - 24.0 |
| Military | | | 2,680 | 2,225 | 20.4 |
| Total - Non-Commercial | | | 6,749 | 7,578 | - 10.9 |
| Grand Total - Aircraft Operations | | | 281,696 | 294,464 | - 4.3 |
| Passengers | | | | | |
| Commercial: | | | | | |
| Air Carrier Domestic: | | | | | |
| Scheduled | 6,769,698 | 6,765,344 | 13,535,042 | 13,468,327 | 0.5 |
| Chartered | 0 | 0 | 0 | 0 | 0.0 |
| Total - Domestic Air Carrier | 6,769,698 | 6,765,344 | 13,535,042 | 13,468,327 | 0.5 |
| Air Carrier International: | | | | | |
| Scheduled | 25,911 | 24,911 | 50,822 | 31,137 | 63.2 |
| Chartered | 0 | 0 | 0 | 0 | 0.0 |
| Total - International Air Carrier | 25,911 | 24,911 | 50,822 | 31,137 | 63.2 |
| Air Carrier Transborder: | | | | | |
| Scheduled | 0 | 0 | 0 | 71,399 | - 100.0 |
| Chartered | 0 | 0 | 0 | 0 | 0.0 |
| Total - Transborder Air Carrier | 0 | 0 | 0 | 71,399 | - 100.0 |
| Total - Air Carrier | 6,795,609 | 6,790,255 | 13,585,864 | 13,570,863 | 0.1 |
| Regional: | | | | | |
| Domestic | 3,308,667 | 3,322,987 | 6,631,654 | 6,544,247 | 1.3 |
| International | 6,755 | 6,634 | 13,389 | 24,707 | - 45.8 |
| Transborder | 167,469 | 164,607 | 332,076 | 278,457 | 19.3 |
| Total - Regional | 3,482,891 | 3,494,228 | 6,977,119 | 6,847,411 | 1.9 |
| Commercial: | | | | | |
| Domestic | 10,078,365 | 10,088,331 | 20,166,696 | 20,012,574 | 0.8 |
| Transborder | 200,135 | 196,152 | 396,287 | 405,700 | - 2.3 |
| Total - Commercial | 10,278,500 | 10,284,483 | 20,562,983 | 20,418,274 | 0.7 |
| Non-Commercial: | | | | | |
| General Aviation | 8,995 | 8,790 | 17,785 | 15,367 | 15.7 |
| Military | 3,540 | 3,444 | 6,984 | 7,912 | - 11.7 |
| Total - Non-Commercial | 12,535 | 12,234 | 24,769 | 23,279 | 6.4 |
| Grand Total - Passengers | 10,291,035 | 10,296,717 | 20,587,752 | 20,441,553 | 0.7 |

Metropolitan Washington Airports Authority
Ronald Reagan Washington National Airport
Monthly Air Traffic Summary Report
November 2013 - October 2014

| Description | Enplaned | Deplaned | Total | Year Ago | % Change |
|------------------------------|-----------------|-----------------|--------------|-----------------|-----------------|
| Cargo - Tonnes | | | | | |
| Mail: | | | | | |
| Domestic | 286 | 46 | 332 | 14 | 2,257.3 |
| International | 0 | 0 | 0 | 0 | 0.0 |
| Transborder | 0 | 0 | 0 | 0 | 0.0 |
| Total - Mail: | 286 | 46 | 332 | 14 | 2,257.3 |
| Freight + Express: | | | | | |
| Domestic | 1,008 | 716 | 1,725 | 2,588 | - 33.4 |
| International | 0 | 0 | 0 | 0 | - 100.0 |
| Transborder | 1 | 1 | 1 | 2 | - 18.2 |
| Total - Freight + Express: | 1,009 | 717 | 1,726 | 2,590 | - 33.4 |
| Mail Plus Freight + Express: | | | | | |
| Domestic | 1,294 | 762 | 2,057 | 2,602 | - 21.0 |
| Transborder | 1 | 1 | 1 | 2 | - 23.3 |
| Grand Total - Cargo | 1,295 | 763 | 2,058 | 2,604 | - 21.0 |

NOTE: Figures may not sum to total due to rounding.

Metropolitan Washington Airports Authority
Washington Dulles International Airport
Monthly Air Traffic Summary Report
October 2014

| Description | Enplaned | Deplaned | Total | Year Ago | % Change |
|--|-----------------|-----------------|------------------|------------------|-----------------|
| Aircraft Operations | | | | | |
| Commercial: | | | | | |
| Air Carrier: | | | | | |
| Domestic | | | 6,499 | 6,494 | 0.1 |
| International | | | 2,950 | 3,003 | - 1.8 |
| Transborder | | | 0 | 0 | 0.0 |
| Total - Air Carrier | | | 9,449 | 9,497 | - 0.5 |
| Regional: | | | | | |
| Domestic | | | 12,476 | 12,693 | - 1.7 |
| International | | | 0 | 80 | - 100.0 |
| Transborder | | | 502 | 977 | - 48.6 |
| Total - Regional | | | 12,978 | 13,750 | - 5.6 |
| Commercial: | | | | | |
| Domestic | | | 18,975 | 19,187 | - 1.1 |
| International | | | 3,452 | 4,060 | - 15.0 |
| Total - Commercial | | | 22,427 | 23,247 | - 3.5 |
| Non-Commercial: | | | | | |
| General Aviation | | | 3,734 | 4,160 | - 10.2 |
| Military | | | 25 | 92 | - 72.8 |
| Total - Non-Commercial | | | 3,759 | 4,252 | - 11.6 |
| Grand Total - Aircraft Operations | | | 26,186 | 27,499 | - 4.8 |
| Passengers | | | | | |
| Commercial: | | | | | |
| Air Carrier Domestic: | | | | | |
| Scheduled | 391,565 | 392,241 | 783,806 | 751,348 | 4.3 |
| Chartered | 1,245 | 701 | 1,946 | 2,607 | - 25.4 |
| Total - Domestic Air Carrier | 392,810 | 392,942 | 785,752 | 753,955 | 4.2 |
| Air Carrier International: | | | | | |
| Scheduled | 267,876 | 272,054 | 539,930 | 527,215 | 2.4 |
| Chartered | 453 | 505 | 958 | 1,020 | - 6.1 |
| Total - International Air Carrier | 268,329 | 272,559 | 540,888 | 528,235 | 2.4 |
| Air Carrier Transborder: | | | | | |
| Scheduled | 0 | 0 | 0 | 0 | 0.0 |
| Chartered | 0 | 0 | 0 | 0 | 0.0 |
| Total - Transborder Air Carrier | 0 | 0 | 0 | 0 | 0.0 |
| Total - Air Carrier | 661,139 | 665,501 | 1,326,640 | 1,282,190 | 3.5 |
| Regional: | | | | | |
| Domestic | 265,689 | 261,172 | 526,861 | 506,875 | 3.9 |
| International | 0 | 0 | 0 | 3,618 | - 100.0 |
| Transborder | 9,396 | 10,085 | 19,481 | 42,596 | - 54.3 |
| Total - Regional | 275,085 | 271,257 | 546,342 | 553,089 | - 1.2 |
| Commercial: | | | | | |
| Domestic | 658,499 | 654,114 | 1,312,613 | 1,260,830 | 4.1 |
| International | 277,725 | 282,644 | 560,369 | 574,449 | - 2.5 |
| Total - Commercial | 936,224 | 936,758 | 1,872,982 | 1,835,279 | 2.1 |
| Non-Commercial: | | | | | |
| General Aviation | 8,208 | 7,452 | 15,660 | 15,187 | 3.1 |
| Military | 124 | 71 | 195 | 230 | - 15.2 |
| Total - Non-Commercial | 8,332 | 7,523 | 15,855 | 15,417 | 2.8 |
| Grand Total - Passengers | 944,556 | 944,281 | 1,888,837 | 1,850,696 | 2.1 |

Metropolitan Washington Airports Authority
Washington Dulles International Airport
Monthly Air Traffic Summary Report
October 2014

| Description | Enplaned | Deplaned | Total | Year Ago | % Change |
|-----------------------------------|-----------------|-----------------|---------------|-----------------|-----------------|
| Cargo - Tonnes | | | | | |
| Mail: | | | | | |
| Domestic | 276 | 437 | 714 | 593 | 20.3 |
| International | 679 | 478 | 1,157 | 983 | 17.7 |
| Total - Mail: | 956 | 915 | 1,871 | 1,576 | 18.7 |
| Freight + Express: | | | | | |
| Domestic | 4,074 | 3,218 | 7,292 | 7,286 | 0.1 |
| International | 4,858 | 10,039 | 14,897 | 13,847 | 7.6 |
| Total - Freight + Express: | 8,932 | 13,257 | 22,189 | 21,133 | 5.0 |
| Mail Plus Freight + Express: | | | | | |
| Domestic | 4,350 | 3,656 | 8,006 | 7,880 | 1.6 |
| International | 5,537 | 10,517 | 16,054 | 14,830 | 8.3 |
| Grand Total - Cargo | 9,888 | 14,172 | 24,060 | 22,710 | 5.9 |

NOTE: Figures may not sum to total due to rounding.

Metropolitan Washington Airports Authority
Washington Dulles International Airport
Monthly Air Traffic Summary Report
January 2014 - October 2014

| Description | Enplaned | Deplaned | Total | Year Ago | % Change |
|--|------------------|------------------|-------------------|-------------------|----------------|
| Aircraft Operations | | | | | |
| Commercial: | | | | | |
| Air Carrier: | | | | | |
| Domestic | | | 57,991 | 62,052 | - 6.5 |
| International | | | 30,399 | 30,261 | 0.5 |
| Transborder | | | 0 | 12 | - 100.0 |
| Total - Air Carrier | | | 88,390 | 92,325 | - 4.3 |
| Regional: | | | | | |
| Domestic | | | 114,521 | 121,957 | - 6.1 |
| International | | | 360 | 80 | 350.0 |
| Transborder | | | 7,164 | 8,918 | - 19.7 |
| Total - Regional | | | 122,045 | 130,955 | - 6.8 |
| Commercial: | | | | | |
| Domestic | | | 172,512 | 184,009 | - 6.2 |
| International | | | 37,923 | 39,271 | - 3.4 |
| Total - Commercial | | | 210,435 | 223,280 | - 5.8 |
| Non-Commercial: | | | | | |
| General Aviation | | | 33,150 | 34,810 | - 4.8 |
| Military | | | 450 | 866 | - 48.0 |
| Total - Non-Commercial | | | 33,600 | 35,676 | - 5.8 |
| Grand Total - Aircraft Operations | | | 244,035 | 258,956 | - 5.8 |
| Passengers | | | | | |
| Commercial: | | | | | |
| Air Carrier Domestic: | | | | | |
| Scheduled | 3,598,307 | 3,664,101 | 7,262,408 | 7,501,556 | - 3.2 |
| Chartered | 6,348 | 6,161 | 12,509 | 17,333 | - 27.8 |
| Total - Domestic Air Carrier | 3,604,655 | 3,670,262 | 7,274,917 | 7,518,889 | - 3.2 |
| Air Carrier International: | | | | | |
| Scheduled | 2,822,649 | 2,889,157 | 5,711,806 | 5,536,931 | 3.2 |
| Chartered | 4,437 | 4,251 | 8,688 | 9,871 | - 12.0 |
| Total - International Air Carrier | 2,827,086 | 2,893,408 | 5,720,494 | 5,546,802 | 3.1 |
| Air Carrier Transborder: | | | | | |
| Scheduled | 0 | 0 | 0 | 0 | 0.0 |
| Chartered | 0 | 0 | 0 | 473 | - 100.0 |
| Total - Transborder Air Carrier | 0 | 0 | 0 | 473 | - 100.0 |
| Total - Air Carrier | 6,431,741 | 6,563,670 | 12,995,411 | 13,066,164 | - 0.5 |
| Regional: | | | | | |
| Domestic | 2,386,489 | 2,338,083 | 4,724,572 | 4,950,422 | - 4.6 |
| International | 13,684 | 14,102 | 27,786 | 3,618 | 668.0 |
| Transborder | 157,612 | 172,310 | 329,922 | 378,888 | - 12.9 |
| Total - Regional | 2,557,785 | 2,524,495 | 5,082,280 | 5,332,928 | - 4.7 |
| Commercial: | | | | | |
| Domestic | 5,991,144 | 6,008,345 | 11,999,489 | 12,469,311 | - 3.8 |
| International | 2,998,382 | 3,079,820 | 6,078,202 | 5,929,781 | 2.5 |
| Total - Commercial | 8,989,526 | 9,088,165 | 18,077,691 | 18,399,092 | - 1.7 |
| Non-Commercial: | | | | | |
| General Aviation | 65,056 | 62,335 | 127,391 | 126,103 | 1.0 |
| Military | 287 | 302 | 589 | 1,133 | - 48.0 |
| Total - Non-Commercial | 65,343 | 62,637 | 127,980 | 127,236 | 0.6 |
| Grand Total - Passengers | 9,054,869 | 9,150,802 | 18,205,671 | 18,526,328 | - 1.7 |

Metropolitan Washington Airports Authority
Washington Dulles International Airport
Monthly Air Traffic Summary Report
January 2014 - October 2014

| Description | Enplaned | Deplaned | Total | Year Ago | % Change |
|-----------------------------------|-----------------|-----------------|----------------|-----------------|-----------------|
| Cargo - Tonnes | | | | | |
| Mail: | | | | | |
| Domestic | 2,028 | 3,725 | 5,752 | 4,447 | 29.4 |
| International | 2,610 | 862 | 3,471 | 5,840 | - 40.6 |
| Total - Mail: | 4,637 | 4,586 | 9,224 | 10,287 | - 10.3 |
| Freight + Express: | | | | | |
| Domestic | 36,980 | 30,660 | 67,640 | 74,579 | - 9.3 |
| International | 55,425 | 89,449 | 144,873 | 123,915 | 16.9 |
| Total - Freight + Express: | 92,405 | 120,109 | 212,514 | 198,495 | 7.1 |
| Mail Plus Freight + Express: | | | | | |
| Domestic | 39,008 | 34,385 | 73,393 | 79,026 | - 7.1 |
| International | 58,034 | 90,310 | 148,345 | 129,756 | 14.3 |
| Grand Total - Cargo | 97,042 | 124,695 | 221,737 | 208,782 | 6.2 |

NOTE: Figures may not sum to total due to rounding.

Metropolitan Washington Airports Authority
Washington Dulles International Airport
Monthly Air Traffic Summary Report
November 2013 - October 2014

| Description | Enplaned | Deplaned | Total | Year Ago | % Change |
|--|-------------------|-------------------|-------------------|-------------------|---------------|
| Aircraft Operations | | | | | |
| Commercial: | | | | | |
| Air Carrier: | | | | | |
| Domestic | | | 69,916 | 74,521 | - 6.2 |
| International | | | 35,966 | 35,600 | 1.0 |
| Transborder | | | 1 | 13 | - 92.3 |
| Total - Air Carrier | | | 105,883 | 110,134 | - 3.9 |
| Regional: | | | | | |
| Domestic | | | 137,687 | 145,486 | - 5.4 |
| International | | | 383 | 80 | 378.8 |
| Transborder | | | 8,801 | 10,595 | - 16.9 |
| Total - Regional | | | 146,871 | 156,161 | - 5.9 |
| Commercial: | | | | | |
| Domestic | | | 207,603 | 220,007 | - 5.6 |
| International | | | 45,151 | 46,288 | - 2.5 |
| Total - Commercial | | | 252,754 | 266,295 | - 5.1 |
| Non-Commercial: | | | | | |
| General Aviation | | | 39,558 | 41,596 | - 4.9 |
| Military | | | 568 | 995 | - 42.9 |
| Total - Non-Commercial | | | 40,126 | 42,591 | - 5.8 |
| Grand Total - Aircraft Operations | | | 292,880 | 308,886 | - 5.2 |
| Passengers | | | | | |
| Commercial: | | | | | |
| Air Carrier Domestic: | | | | | |
| Scheduled | 4,299,350 | 4,367,601 | 8,666,951 | 8,990,450 | - 3.6 |
| Chartered | 7,116 | 6,729 | 13,845 | 19,414 | - 28.7 |
| Total - Domestic Air Carrier | 4,306,466 | 4,374,330 | 8,680,796 | 9,009,864 | - 3.7 |
| Air Carrier International: | | | | | |
| Scheduled | 3,335,515 | 3,363,346 | 6,698,861 | 6,498,362 | 3.1 |
| Chartered | 5,254 | 5,244 | 10,498 | 12,049 | - 12.9 |
| Total - International Air Carrier | 3,340,769 | 3,368,590 | 6,709,359 | 6,510,411 | 3.1 |
| Air Carrier Transborder: | | | | | |
| Scheduled | 0 | 0 | 0 | 0 | 0.0 |
| Chartered | 50 | 139 | 189 | 473 | - 60.0 |
| Total - Transborder Air Carrier | 50 | 139 | 189 | 473 | - 60.0 |
| Total - Air Carrier | 7,647,285 | 7,743,059 | 15,390,344 | 15,520,748 | - 0.8 |
| Regional: | | | | | |
| Domestic | 2,852,588 | 2,808,870 | 5,661,458 | 5,923,968 | - 4.4 |
| International | 14,001 | 14,943 | 28,944 | 3,618 | 700.0 |
| Transborder | 189,677 | 204,502 | 394,179 | 442,853 | - 11.0 |
| Total - Regional | 3,056,266 | 3,028,315 | 6,084,581 | 6,370,439 | - 4.5 |
| Commercial: | | | | | |
| Domestic | 7,159,054 | 7,183,200 | 14,342,254 | 14,933,832 | - 4.0 |
| International | 3,544,497 | 3,588,174 | 7,132,671 | 6,957,355 | 2.5 |
| Total - Commercial | 10,703,551 | 10,771,374 | 21,474,925 | 21,891,187 | - 1.9 |
| Non-Commercial: | | | | | |
| General Aviation | 76,686 | 74,188 | 150,874 | 150,066 | 0.5 |
| Military | 301 | 308 | 609 | 1,145 | - 46.8 |
| Total - Non-Commercial | 76,987 | 74,496 | 151,483 | 151,211 | 0.2 |
| Grand Total - Passengers | 10,780,538 | 10,845,870 | 21,626,408 | 22,042,398 | - 1.9 |

Metropolitan Washington Airports Authority
Washington Dulles International Airport
Monthly Air Traffic Summary Report
November 2013 - October 2014

| Description | Enplaned | Deplaned | Total | Year Ago | % Change |
|-----------------------------------|-----------------|-----------------|----------------|-----------------|-----------------|
| Cargo - Tonnes | | | | | |
| Mail: | | | | | |
| Domestic | 2,582 | 4,654 | 7,236 | 5,249 | 37.9 |
| International | 4,761 | 2,585 | 7,346 | 6,469 | 13.6 |
| Total - Mail: | 7,343 | 7,240 | 14,583 | 11,718 | 24.4 |
| Freight + Express: | | | | | |
| Domestic | 43,703 | 36,945 | 80,648 | 92,517 | - 12.8 |
| International | 64,732 | 106,354 | 171,086 | 149,970 | 14.1 |
| Total - Freight + Express: | 108,434 | 143,300 | 251,734 | 242,486 | 3.8 |
| Mail Plus Freight + Express: | | | | | |
| Domestic | 46,285 | 41,600 | 87,885 | 97,765 | - 10.1 |
| International | 69,493 | 108,939 | 178,432 | 156,439 | 14.1 |
| Grand Total - Cargo | 115,777 | 150,539 | 266,317 | 254,204 | 4.8 |

NOTE: Figures may not sum to total due to rounding.