

Dulles Corridor Metrorail Project Quarterly Update

Larry L. Melton

*Project Executive Director
Dulles Transit Partners, LLC*

November 2013



**Dulles Transit
Partners, LLC**

A team led by Bechtel

Environmental, Safety & Health Performance

1. Since Design-Build start (March 2009)

- No Environmental Enforcement Actions
- Lost Time Rate: 0.1 compared to industry rate of 2.1
- Recordable Incident Rate: 1.6 compared to industry rate of 3.9 (13.8 million man-hours)

2. Current Program Focus

- Rail operations, Startup testing, and Station/Yard completion
- Performance of subcontractors and lower-tier subcontractors
- Public safety and preventing unauthorized access
- Preparation for close-out of environmental permits

Design-Build Schedule

1. **MWAA** has notified DTP of WMATA changes that require incorporation into the project schedule. Some of this work will be performed after the Scheduled Substantial Completion Date (SSCD).
2. **Start Up and Testing** activities are progressing. Automatic Train Control testing is complete. WMATA's Operational Readiness Testing and Systems Performance Demonstration test have commenced.
3. **MWAA and WMATA's** initial acceptance walkdowns of the Stations and Pavilions are complete. Walkdowns by the permitting agencies have occurred, which will be followed by Certificates of Occupancy.
4. **Permit close outs** continue for all elements of the project.
5. **Project is 99 percent complete** through September 2013.



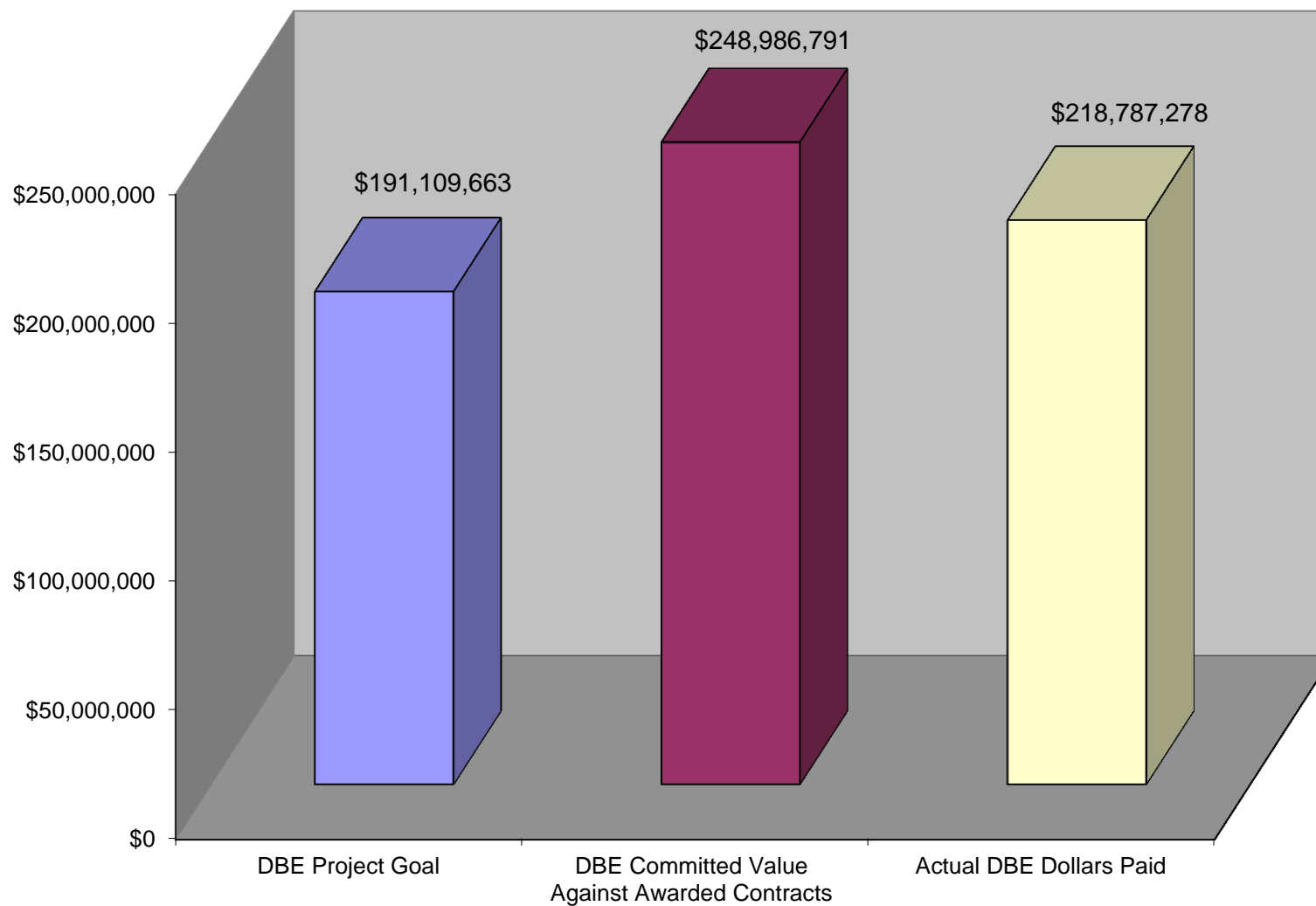
Project Staffing September 2013

DTP Professional Staff	117
DTP Manual Craft	53
Subcontract Craft	380





DTP DBE Goal Status as of September 30, 2013





West Falls Church Yard





METROPOLITAN WASHINGTON AIRPORTS AUTHORITY



West Falls Church Yard – Services and Inspection Building

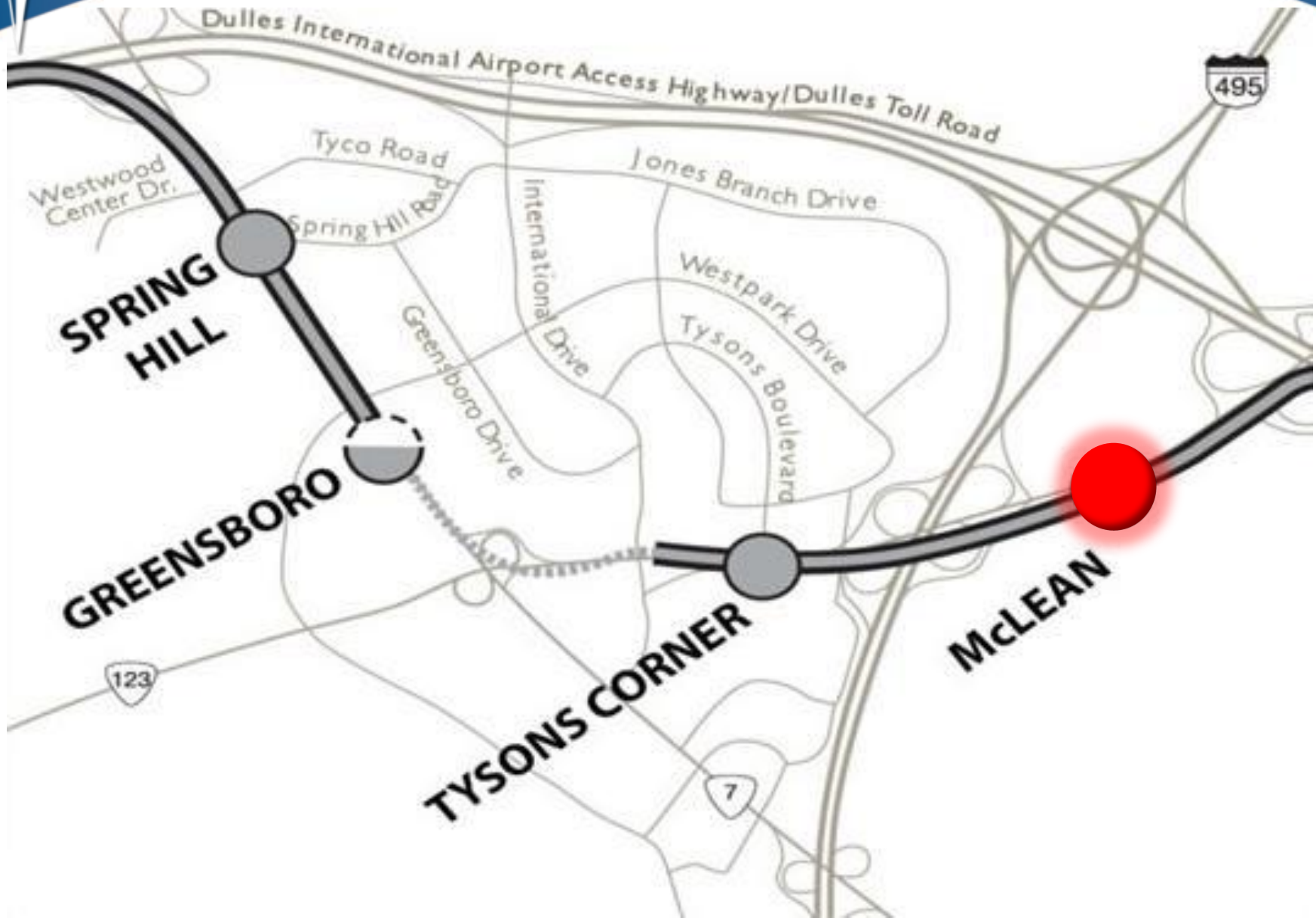


METROPOLITAN WASHINGTON AIRPORTS AUTHORITY



West Falls Church Yard – Sound Cover Box

McLean Station





METROPOLITAN WASHINGTON AIRPORTS AUTHORITY



McLean Station – Artist's Rendering



METROPOLITAN WASHINGTON AIRPORTS AUTHORITY



McLean Station – October 2013



METROPOLITAN WASHINGTON AIRPORTS AUTHORITY

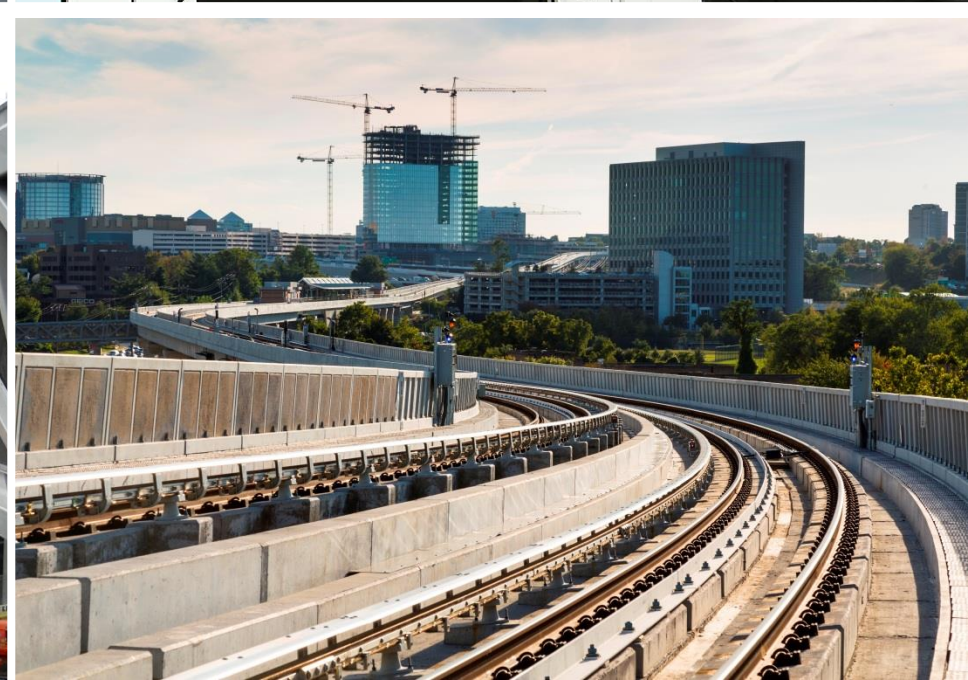


McLean Station – October 2013



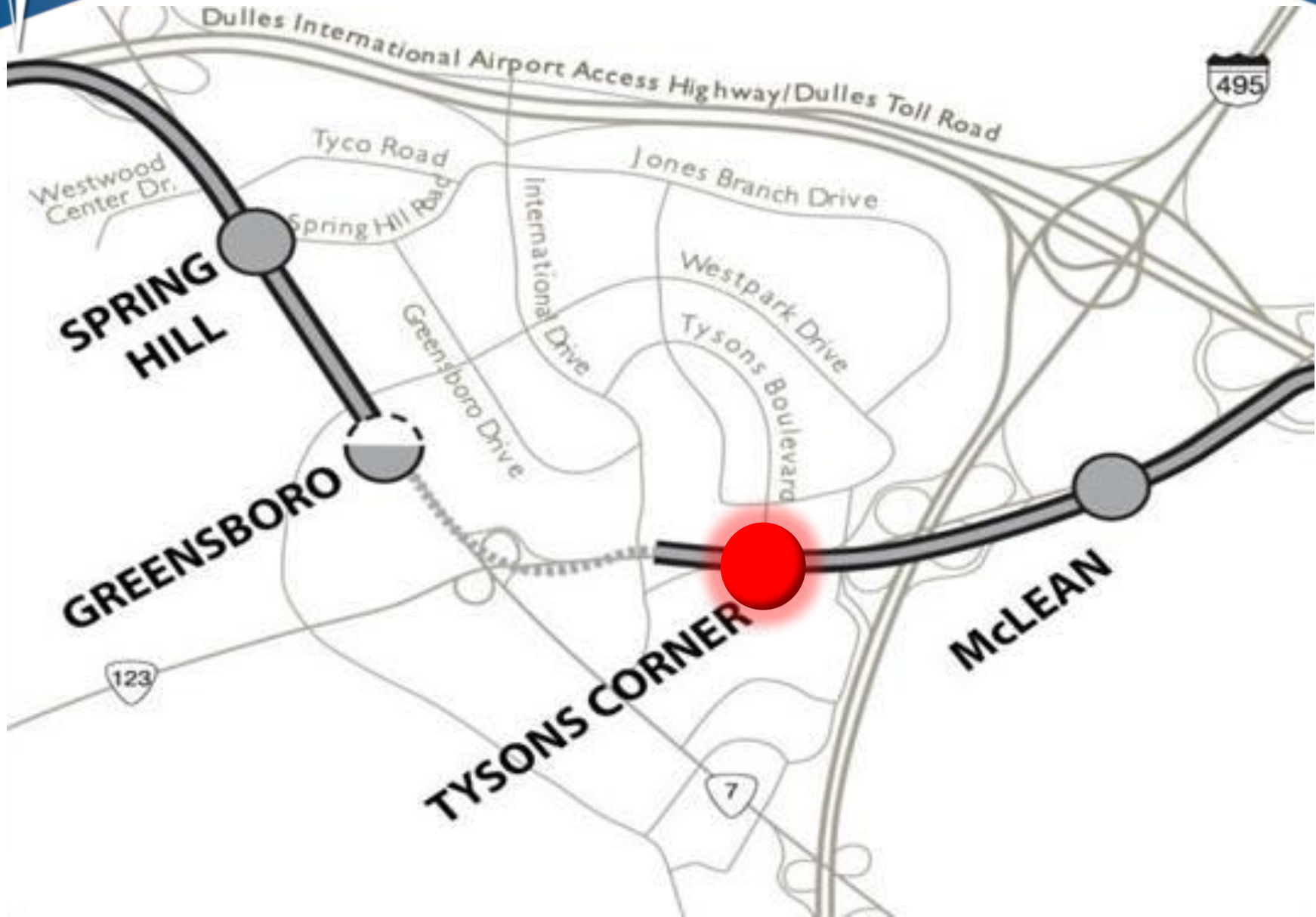


METROPOLITAN WASHINGTON AIRPORTS AUTHORITY



McLean Station – October 2013

Tysons Corner Station





METROPOLITAN WASHINGTON AIRPORTS AUTHORITY



Tysons Corner Station – October 2013



METROPOLITAN WASHINGTON AIRPORTS AUTHORITY



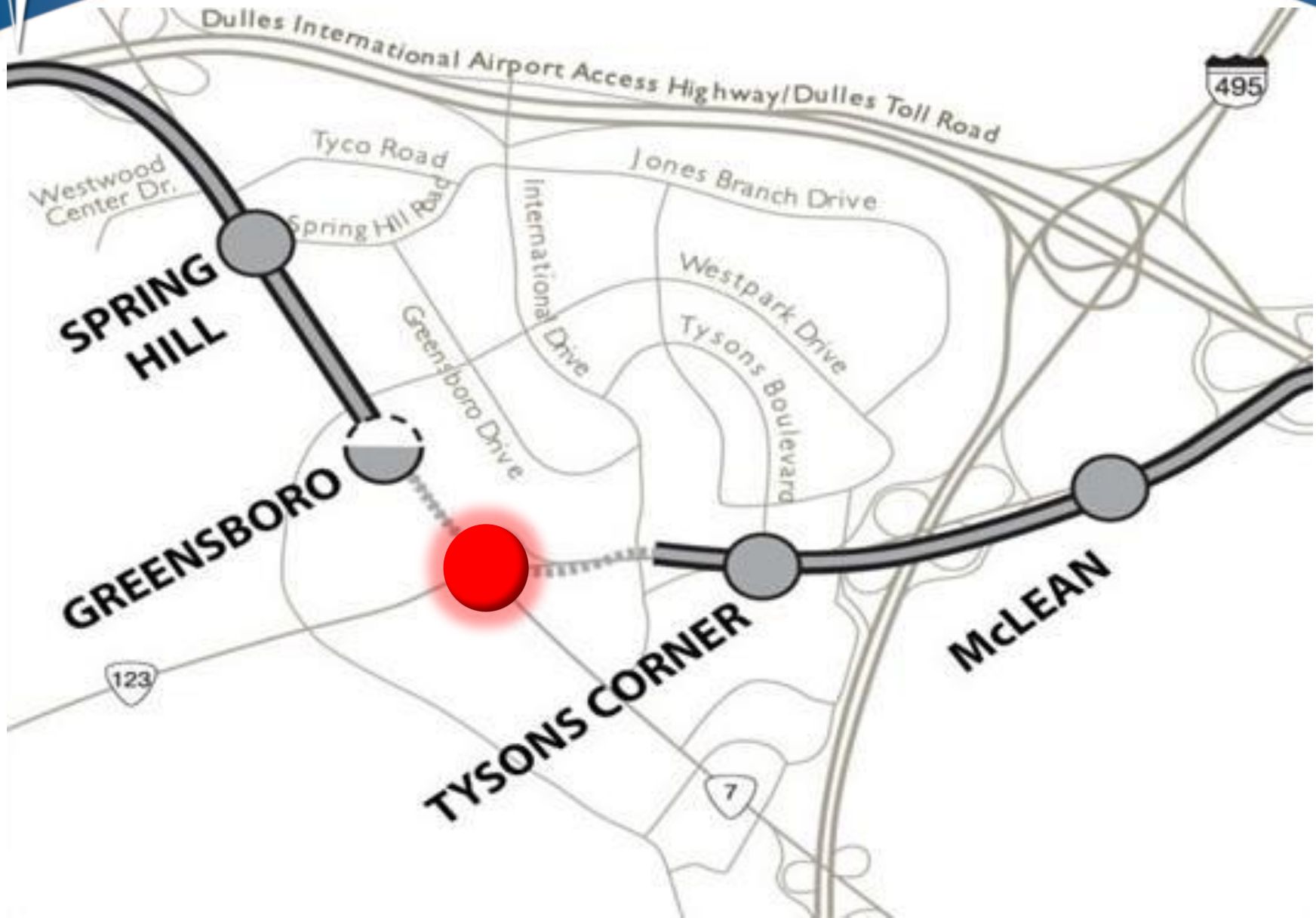
Tysons Corner Station – October 2013

METROPOLITAN WASHINGTON AIRPORTS AUTHORITY



Tysons Corner Station – October 2013

Tunnels





METROPOLITAN WASHINGTON AIRPORTS AUTHORITY

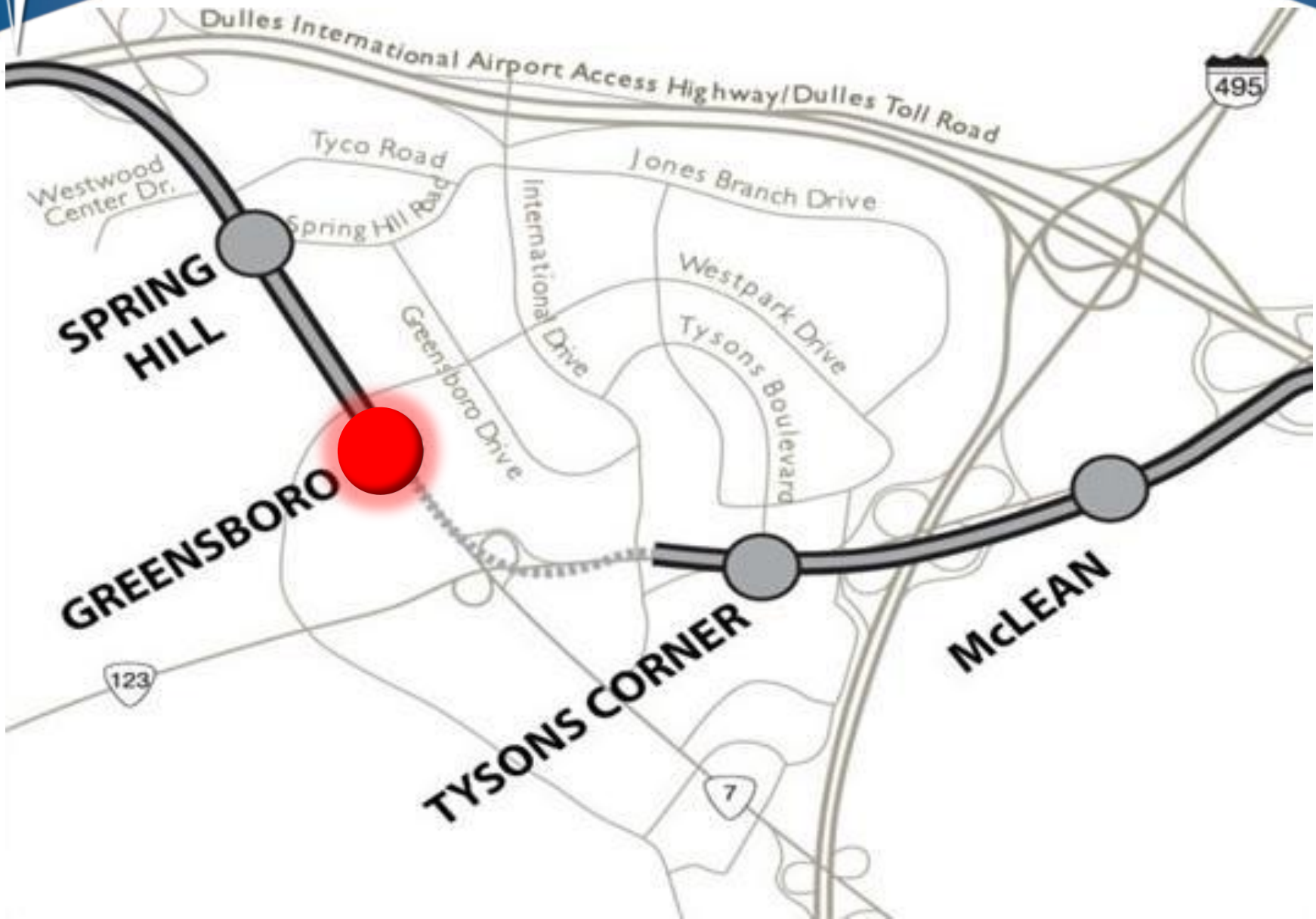


NATM Tunnel



Cut & Cover Tunnel

Greensboro Station





METROPOLITAN WASHINGTON AIRPORTS AUTHORITY



Greensboro Station – October 2013

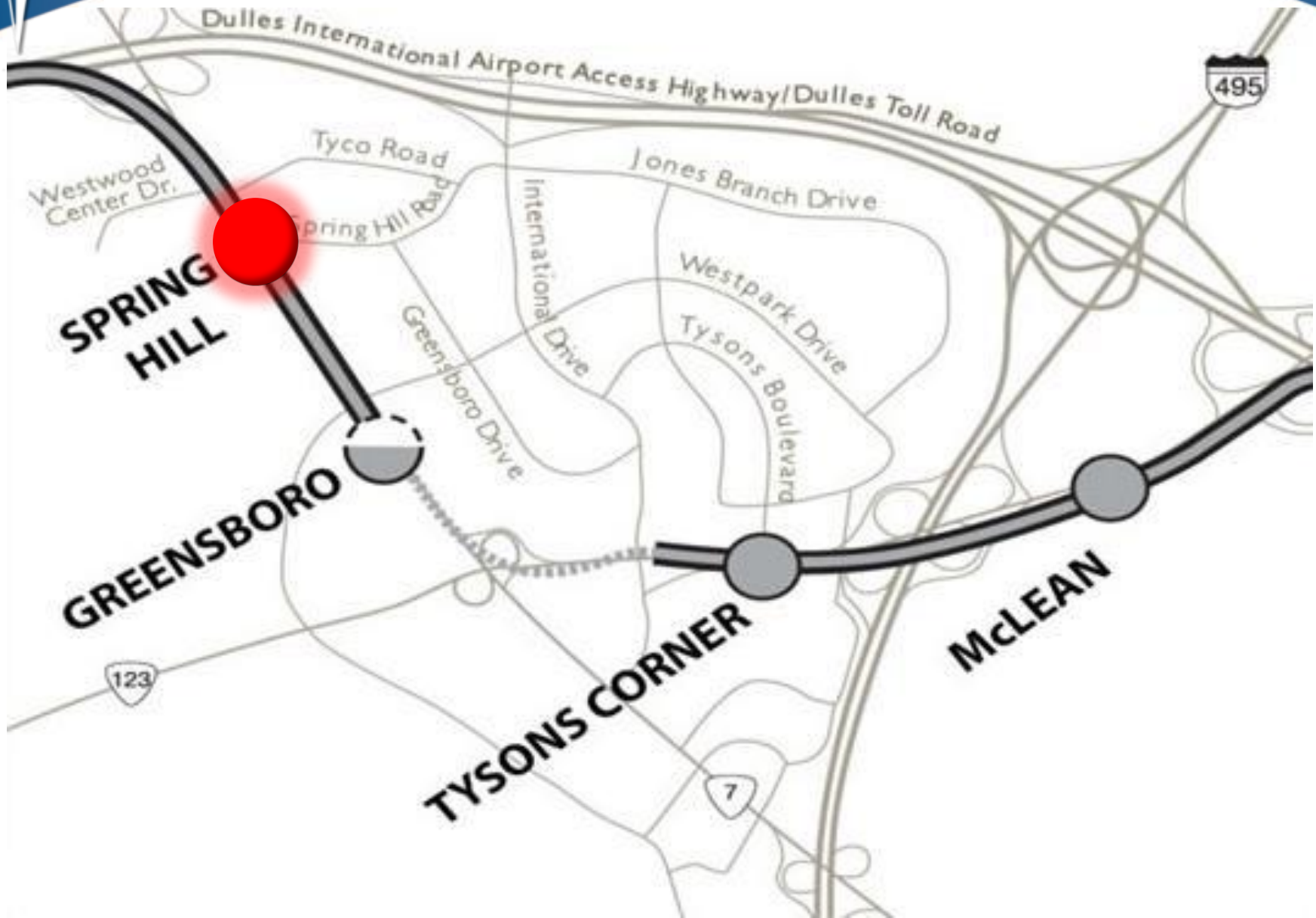


METROPOLITAN WASHINGTON AIRPORTS AUTHORITY



Greensboro Station – October 2013

Spring Hill Station





METROPOLITAN WASHINGTON AIRPORTS AUTHORITY



Spring Hill Station – October 2013



METROPOLITAN WASHINGTON AIRPORTS AUTHORITY



View from Spring Hill Station

METROPOLITAN WASHINGTON AIRPORTS AUTHORITY



SV Spring Hill
Wiehle-Reston East



Spring Hill Station – October 2013

Wiehle-Reston East Station



METROPOLITAN WASHINGTON AIRPORTS AUTHORITY



Wiehle-Reston East Station – October 2013



METROPOLITAN WASHINGTON AIRPORTS AUTHORITY



Wiehle-Reston East Station – October 2013

METROPOLITAN WASHINGTON AIRPORTS AUTHORITY



Photo by Chuck Samuelson,
Dulles Corridor Metrorail Project

Testing and Commissioning



METROPOLITAN WASHINGTON AIRPORTS AUTHORITY



Testing and Commissioning



METROPOLITAN WASHINGTON AIRPORTS AUTHORITY



**Dulles Transit
Partners, LLC**

A team led by Bechtel



DULLES CORRIDOR METRORAIL PROJECT



METROPOLITAN WASHINGTON
AIRPORTS AUTHORITY