



Dulles Corridor Metrorail Project – Phase 2 Quarterly Update

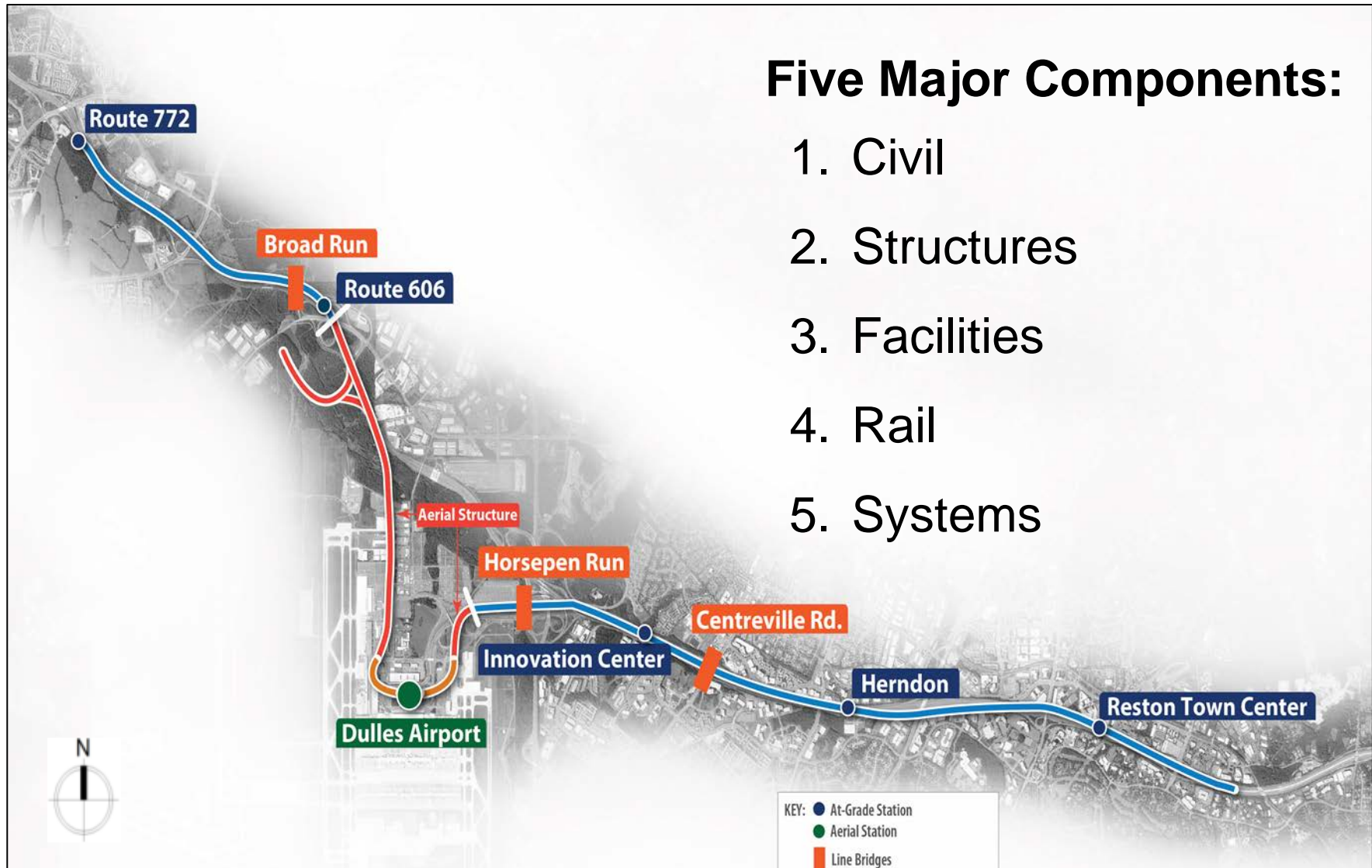
Keith Couch
Capital Rail Constructors

January 21, 2015





Scope of Work– Overview



Five Major Components:

1. Civil
2. Structures
3. Facilities
4. Rail
5. Systems

Safety

Since Notice to Proceed (July 2013)

- Man-Hours Worked: 900,000+
- No Environmental Enforcement Actions
- No Recordable or Lost Time Rate Incidents

Current Program Focus:

- Work adjacent to traffic and within Maintenance of Traffic (MOT) areas
- Weekly safety audits of work areas
- Emphasizing employee “Stand Up Listen Up” initiative



Design-Build Status

Design Status:

76% Complete

- **Geotechnical Work** 98% Complete
- **Initial Survey Work** 98% Complete
- **Track Design** 86% Complete
- **Systems Design** 65% Complete
- **Civil Design** 83% Complete
- **Utilities Design** 96% Complete
- **Facilities Design (Stations)** 52% Complete
- **Wayside Design** 75% Complete
- **Structures Design (Aerial Guideway/3 Bridges)** 93% Complete

- **Design Packages Issued** 225
- **Issued for Permit (IFP) Packages Issued** 38
- **Permits Received** 31
- **Issued for Construction (IFC) Packages Issued** 30

Design-Build Status

Construction Status:

1.6% Complete*

Overall Project Status:

14.9% Complete*

* Cost percent complete through Dec 1, 2014

12 Month Look Ahead

East Segment:

- **Civil**
 - Start Enabling Work Maintenance of Traffic (MOT) and Environmental and Safety (E&S)
 - Start Guideway Work (Guideway Walls, Storm Drainage, Sub-Ballast, etc.)

- **Stations**
 - Start Innovation Station
 - Start Herndon-Monroe Station
 - Start Reston Station

- **Bridges**
 - Start Horse Pen Run Bridge
 - Start Centreville Road Bridge

12 Month Look Ahead

West Segment:

- **Civil**
 - Greenway Road Widening
 - Start Guideway Work (Guideway Walls, Storm Drainage, Sub-Ballast, etc.)

- **Bridges**
 - Start Broad Run Bridge



CRC Management accepts the ALS Ice Bucket Challenge!

Manpower Hours (September – November 2014)

	Sep 2014	Oct 2014	Nov 2014
Professional Staff	47,908	58,161	44,385
Craft Labor – CRC & Subcontractors	10,412	11,268	15,980



Labor by Race/Ethnicity September – November 2014

	African American		Caucasian		Hispanic		Other	
	EMP	%	EMP	%	EMP	%	EMP	%
Sept.	20	14%	61	42%	61	42%	1	1%
Oct.	20	16%	58	46%	43	34%	2	2%
Nov.	24	15%	74	46%	50	31%	9	6%
QTR AVG	21	15%	64	45%	51	36%	4	3%
	African American		Caucasian		Hispanic		Other	



Labor by State September – November 2014

	VA	MD	DC	PA	WV	OTHER
	%	%	%	%	%	%
Sep – Nov Average	53%	20%	3%	9%	5%	10%
	VA	MD	DC	PA	WV	OTHER



Competitive Job Market

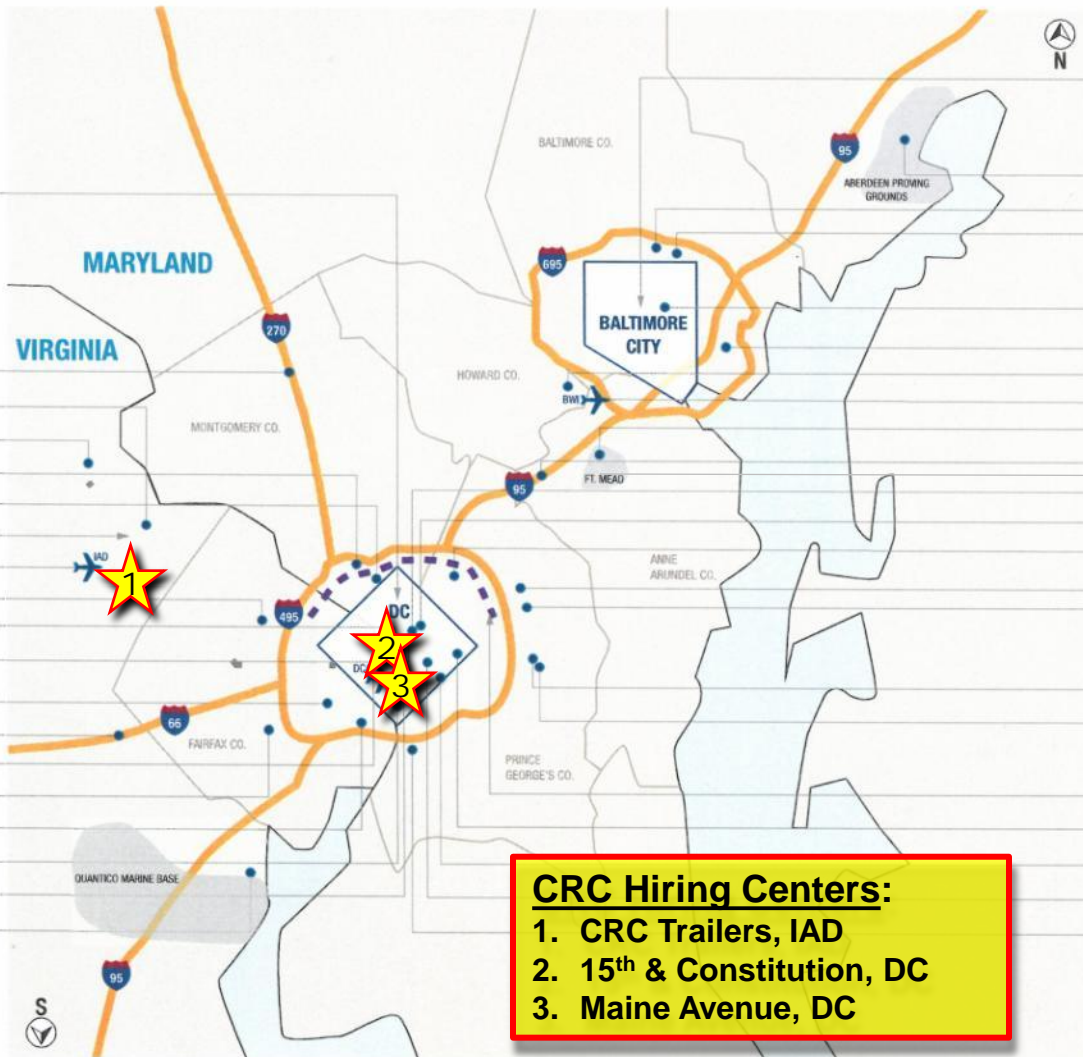
Major Regional Construction Projects - 2015-2018

COMBINED DISTRICT OF COLUMBIA DEVELOPMENT \$2.8B

- General Services \$2.8B
- Gallaudet University
- Howard University
- Department of State
- Architect of Capital
- Museum of the Bible
- Private Commercial - Office
- Private Commercial - Residential
- Georgetown University Medical
- Washington Hospital Center

COMBINED BALTIMORE CITY DEVELOPMENT \$900M

- Healthcare
- Public Work
- Private Commercial - Office
- Private Commercial - Residential



- I270 Corridor \$150M
- Dulles Corridor \$200M
- MWAA Dulles Yard \$260M
- NIH Campus \$600M
- Bethesda Naval Hospital Building \$650M
- MWAA Silver Line - Phase 2 \$1.2B
- IAD Expansion \$300M**
- Tyson's Commercial \$500M
- State Department WRAMC \$500M
- Police HDQT Restoration \$500M
- Arlington County Street Car \$350M
- I66 Managed Lanes \$1.5B
- Reagan National Airport Expansion \$200M
- INOVA Hospital Facilities \$500M
- WMATA Potomac Yard Station \$275M
- DC United Stadium \$250M
- Frederick Douglas Bridge \$600M
- Marine Corps Base Quantico/Fort Belvoir \$400M

- Aberdeen Proving Grounds \$400M
- Towson State University \$100M
- Morgan State University \$100M
- MTA Baltimore Red Line \$2.5B
- Water Filtration Projects \$600M
- UMBC \$200M
- BWI Expansion \$200M
- Ft. Mead East Campus Cyber Center \$500M
- NSA Headquarters \$3B
- I95 Corridor \$300M
- North East Boundary Tunnel \$600M
- AFRH Site \$500M
- University of Maryland College Park \$400M
- FBI HQ Consolidation \$1.2B
- Prince George's Hospital Center \$350M
- Joint Base Andrews \$250M
- Air Force One Hanger Replacement \$300M
- MTA Purple Line \$1.6B
- Burnham Place \$450M
- DHS Consolidation \$525M
- WMATA Overhaul Yard \$300M
- MGM Casino & Resort \$800M

CRC Hiring Centers:

1. CRC Trailers, IAD
2. 15th & Constitution, DC
3. Maine Avenue, DC



Local Employment Outreach Activities

Centralized Employment Assistance

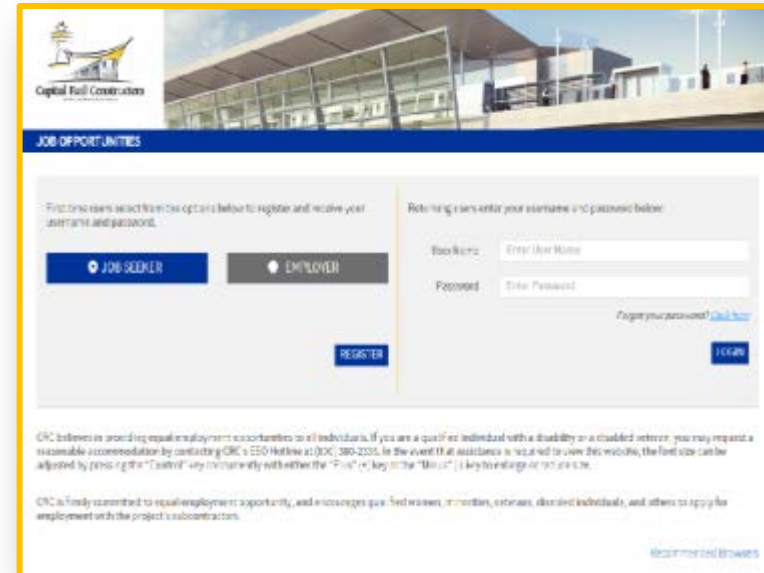
- CRC has established a Jobs Hotline number (844-CRC-RAIL or 844-272-7245). This hotline may be utilized for questions concerning the website, limited technical assistance, and additional questions regarding employment opportunities with the Dulles Corridor Metrorail Project.

Training – For Employees and for Companies

- Federal Compliance training for subcontractors occurred November 20, 2014
 - DOL/Wage and Hour presentation given – Davis Bacon Training
 - Office of Federal Contract Compliance Programs (OFCCP) 16 Step Training

Established Steering Committee

- Steering Committee Meeting, November 20, 2014 attendees:
 - OFCCP
 - DOL/Wage and Hour
 - Department of Employment Services (DC)
- Next Steering Committee Meeting will be at the end of this month.





Applying for CRC Construction Jobs

1. Register at:

www.CapitalRailConstructors.com

2. Click on the tab:

“Employment Opportunities”

3. CALL Our Employment Opportunities Hotline:

1-844-CRC-RAIL

1-844-272-7245

3. Visit CRC Hiring Centers:

- CRC Trailers, Windsock Drive, Dulles Airport
- 15th & Constitution, DC
- Maine Avenue, DC



Outreach to:



**Greater Washington
Urban League**

Serving the Community since 1938



Empowering Communities.
Changing Lives.



- **Use its infrastructure/
network to promote
Silver Line to DC
Workers.**



Outreach to:



Phase 1 Contractors



- ✓ **Contacted over 90% of Phase 1 Subcontractors and Suppliers.**



Local Employment Outreach 2014 Events

- May** Herndon Festival, Herndon, VA
- Aug** Eleanor Norton Holmes Job Fair, DC
- Sep** Dulles Day Festival and Plane Pull,
Dulles Airport
- Oct** Minority Event, Prince George's
County
- Nov** Veteran and Military Employee
Celebration – Honoring Fisher House,
DC
- Dec** Building Futures Employment
Training, DC





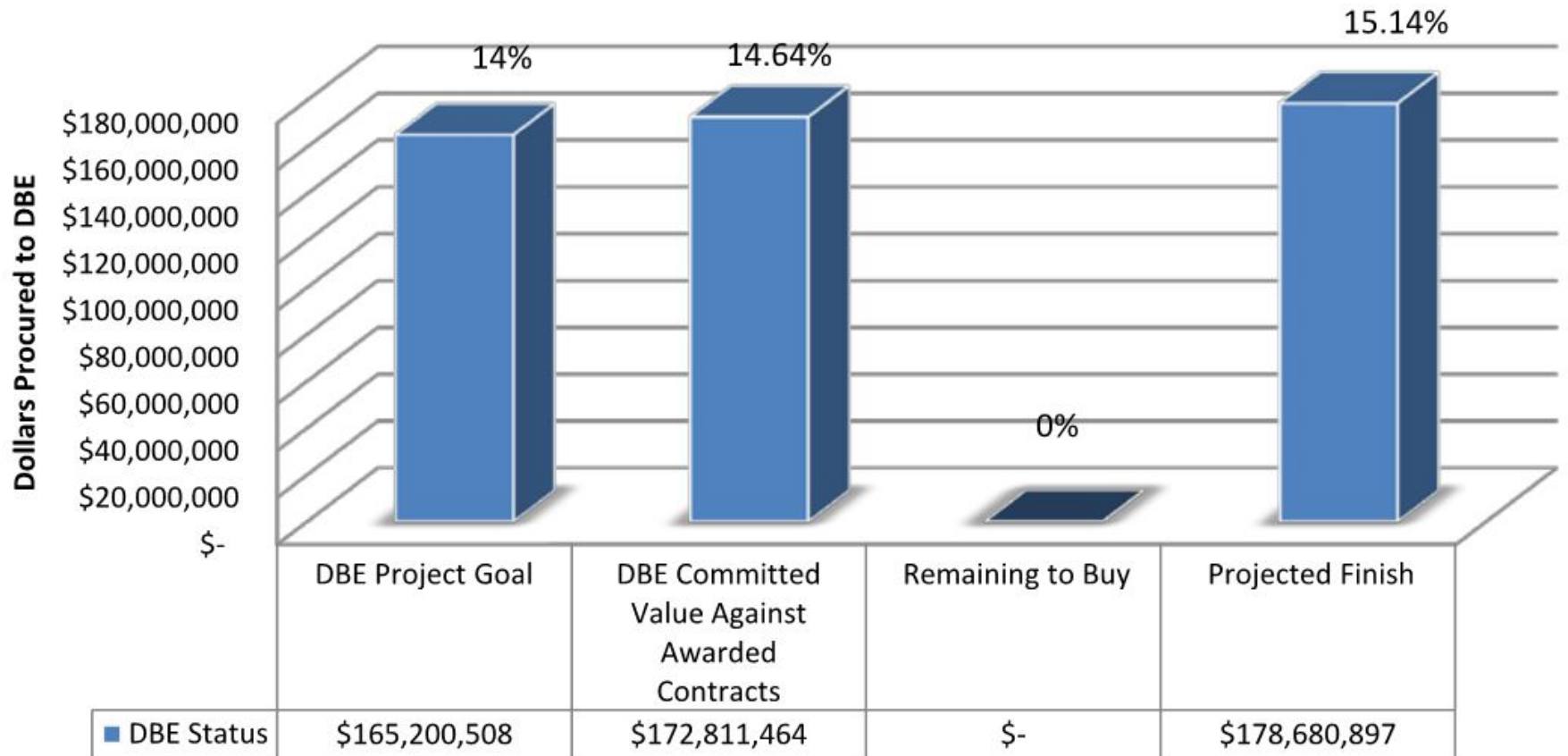
Steering Committee

Purpose	<ul style="list-style-type: none">• Voluntary OFCCP Compliance• Subcontractor Training
Topics	<ul style="list-style-type: none">• Davis-Bacon Compliance• Compliance Reporting• OFCCP 16 Steps
Members	<ul style="list-style-type: none">• OFCCP Representatives• CRC Representatives
Meeting	<ul style="list-style-type: none">• Monthly



DBE Goal Status

Dulles Corridor Metrorail Project, Phase 2, Package A Disadvantaged Business Enterprise(DBE) Status



Graduates of the Clark DBE School

United General

Metal Ceiling Installation

Concrete Mixes Inc.

Ready-Mix Supply

J Roberts Construction

Rough Carpentry Supply & Installation

G. W. Peoples Co., Inc.

Rail Supply & Installation

Continental Construction

Door, Frame, Hardware Supply & Install



Outreach to:



- **Met with Airport Minority Advisory Council and Conference of Minority Transportation Officials to discuss targeted DBE participation.**



METROPOLITAN WASHINGTON AIRPORTS AUTHORITY

Aerial Guideway: Drilled Shafts



- 68 Drilled Shafts installed as of December 19
- 35% complete

Drilled Shaft Work in Yard Leads Area



Aerial Guideway: Columns

- 48 Columns installed as of December 19
- 24% Complete

Column Forms and Concrete Pour at Yard Leads



Aerial Guideway: Caps



Cap Installation in Cargo Area

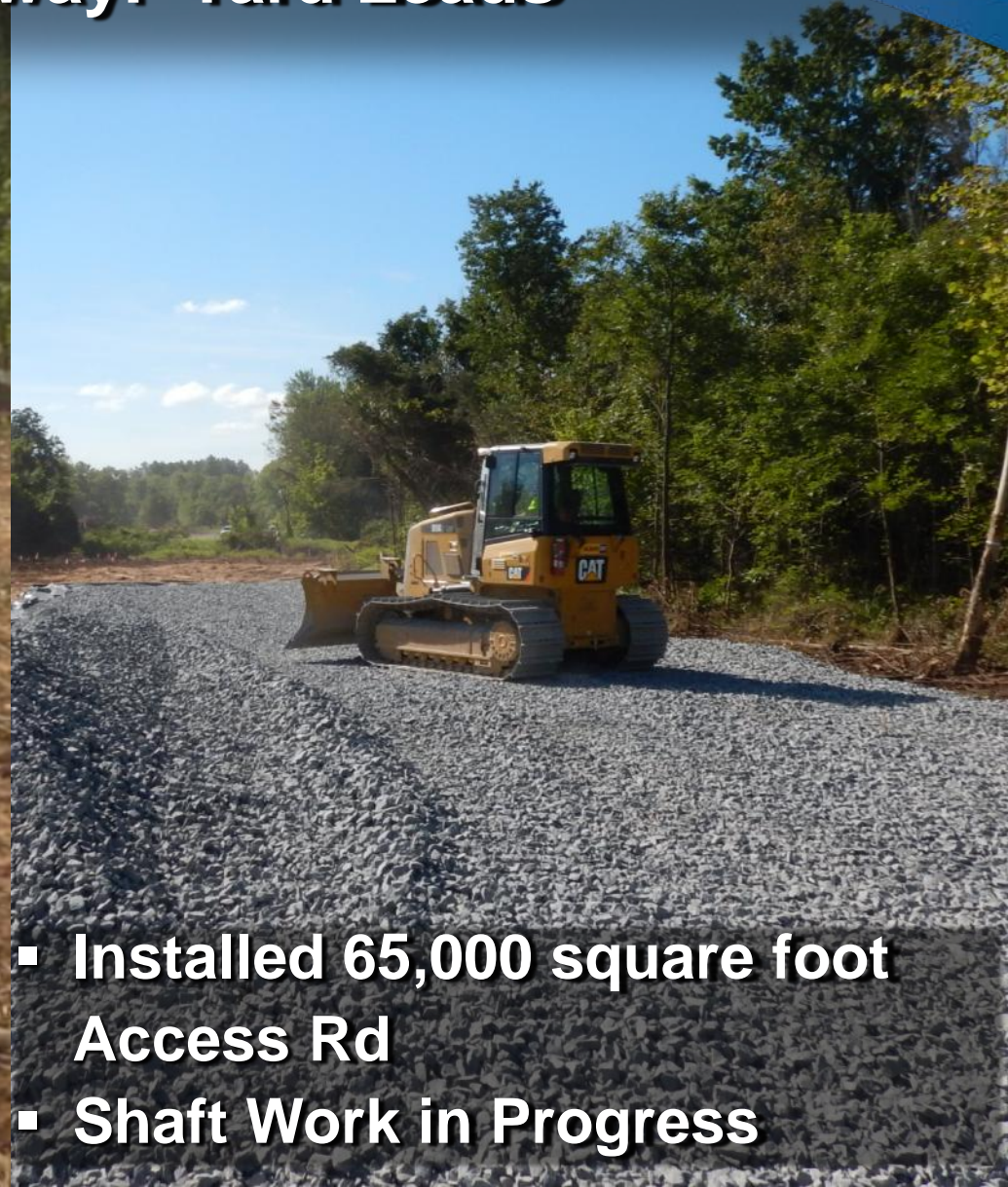


- 31 Caps poured as of December 19
- 18% complete

Cap Installation Adjacent to Rental Car Facilities



Aerial Guideway: Yard Leads



- Installed 65,000 square foot Access Rd
- Shaft Work in Progress



UTILITIES RELOCATION

- XXX
- XXX
- XXX

- 1,350 linear feet of Existing Utilities Relocated



Facilities: Innovation Center Station

- Enabling Work
- Excavation & Foundations
- Precast & Steel

Nov 2014 - Apr 2015
May 2015 - Oct 2015
Oct 2015 - Feb 2016

Innovation
Station



Shoulder Widening for Innovation Station



Facilities: Herndon Station

- Enabling Work Jan 2015 - Apr 2015
- Excavation & Foundations Sep 2015 - Feb 2016
- Precast & Steel Feb 2016 - Jul 2016

Herndon
Station





Facilities: Reston Town Center Station

- Enabling Work Feb 2015 - Jun 2015
- Deep Foundations Jun 2015 - Dec 2015
- Excavation & Foundations Jan 2016 - Jul 2016

Reston Town
Center Station





Bridges: Horse Pen Run



- Support of Excavation & Foundations
- Structural Steel & Bridge Deck

Oct 2014 - Jan 2015
Mar 2015 - Jul 2015



Bridges: Broad Run



- **Support of Excavation & Foundations** Jan 2015 - Mar 2015
- **Structural Steel & Bridge Deck** Sep 2015 - Mar 2016



Bridges: Centreville Road

- **Support of Excavation & Foundations** Feb 2015 - Apr 2015
- **Structural Steel & Bridge Deck** Jun 2015 - Aug 2015



Can you imagine not having a warm coat to wear this winter?



DULLES CORRIDOR METROBUS PROJECT
WINTER COAT CLOSET
 2014/2015
GOAL: 500 COATS

The DCMMP and CRC Teams are partnering to bring some much needed warmth into the lives of folks in need.

Please donate:

NEW or GENTLY USED winter coats and new hats, gloves and scarves. (In good condition and clean please.)

Both adult and child sizes are needed (children's sizes and men's XXL - XXL sizes especially needed).

Coat racks located in the lobbies at:

- 196 on 198 Via Boxes, 2nd floor
- 198 Via Boxes, 3rd floor
- AP-1 (Dulles Terminal)

Deadline for Holiday Deliveries:
 First deliveries to the Cornerstones Winter Coat Closet will take place on Monday, December 22.

Capital Rail Constructors

QUESTIONS?
 Marcia McAllister@capitalrailconstructors.com
 Leslie.Peertra@capitalrailconstructors.com

5K/10K On the Runway

Bragging Rights: Alexis Rosmarin (12 years old), daughter of CRC Construction Project Manager Adam, took first in her division and placed 22nd among 774 Female Finishers! (Bottom Left)



Capital Rail Constructors

CRC Stands Strong

TEAM RIVER RUNNER
 HELPING OUR WOUNDED VETERANS

CRC in the Community

CRC Thanksgiving Food Drive

ALS Association
 Fighting Lou Gehrig's Disease

Create a world without ALS.



FedEx Express

Dulles Days Plane Pull



Ronald Reagan Washington National Airport



Dulles Corridor Metrorail Project



Dulles Toll Road



Washington Dulles International Airport



**METROPOLITAN WASHINGTON
AIRPORTS AUTHORITY**