

# Dulles Corridor Metrorail Project Quarterly Update

**Larry L. Melton**  
*Project Executive Director*  
*Dulles Transit Partners, LLC*

**January 2013**



**Dulles Transit  
Partners, LLC**

*A team led by Bechtel*

# Environmental, Safety & Health Performance

## 1. Since Design-Build start (March 2009)

- No Environmental Enforcement Actions
- Lost Time Rate: 0.10 compared to industry rate of 2.1
- Recordable Incident Rate: 1.68 compared to industry rate of 3.9 (11.7 million man-hours)

## 2. Current Program Focus

- Performance of subcontractors and electrical craft
- Controlled rail access and Startup preparations
- People Based Safety (craft on craft observations for improving safe behaviors)
- Accountability and recognition to sustain changed behaviors
- Cold weather and winter safety



## **Design-Build Schedule**

1. DTP continues to implement mitigation measures for delays due to Hurricane Sandy and other weather related events.
2. Systems Task Group continues installation of cable and terminations all along the alignment.
3. Initial Start up and Testing activities have commenced in coordination with MWAA and WMATA.
4. Held Partnering session December 14 with MWAA, WMATA, VDOT, and Virginia Department of General Services on Project Turnover and Close Out.
5. The Project is 94 percent complete through November 2012.

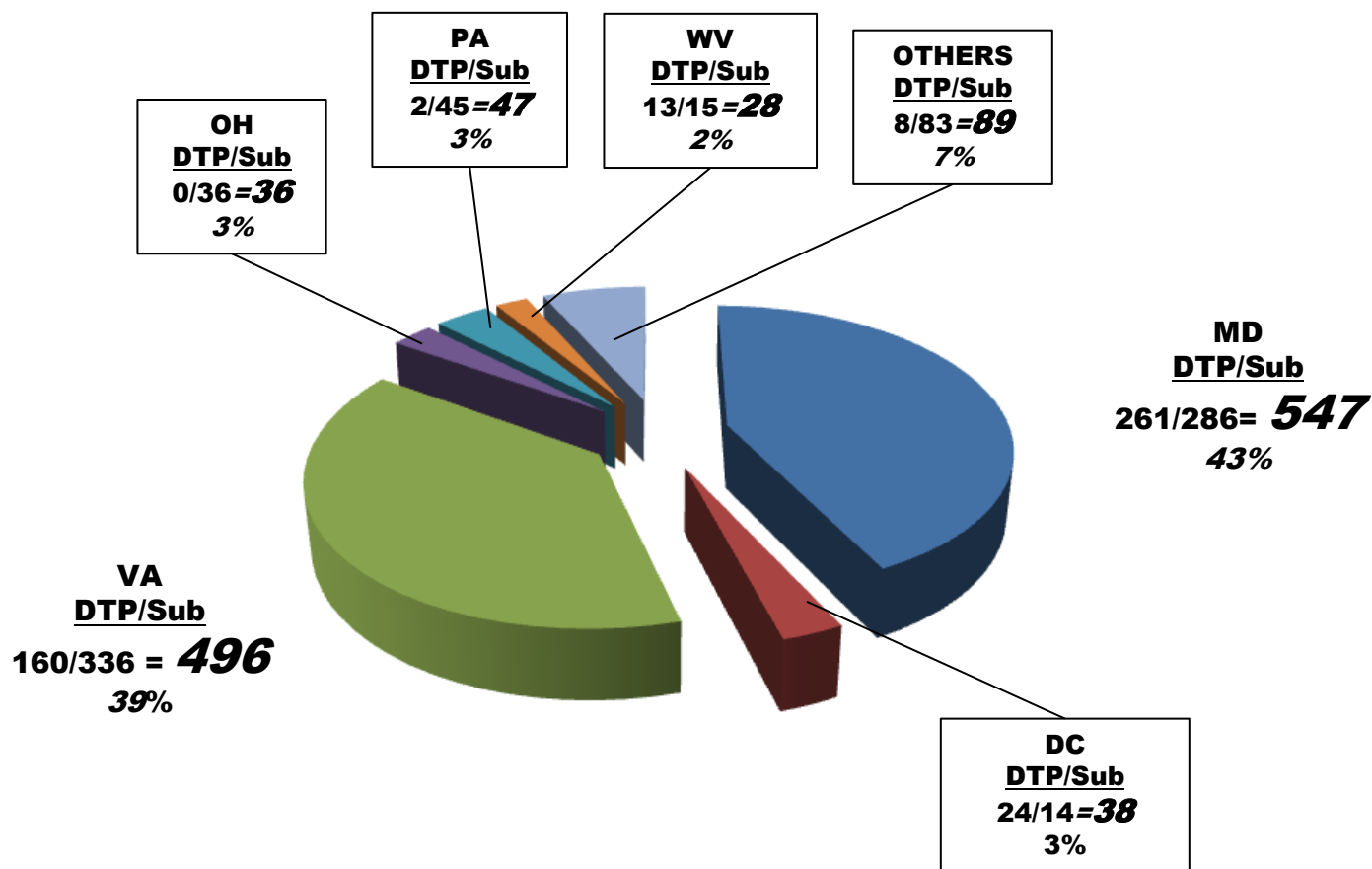


## Project Staffing

DTP Professional Staff	240
DTP Manual Craft	466
Subcontract Craft	815

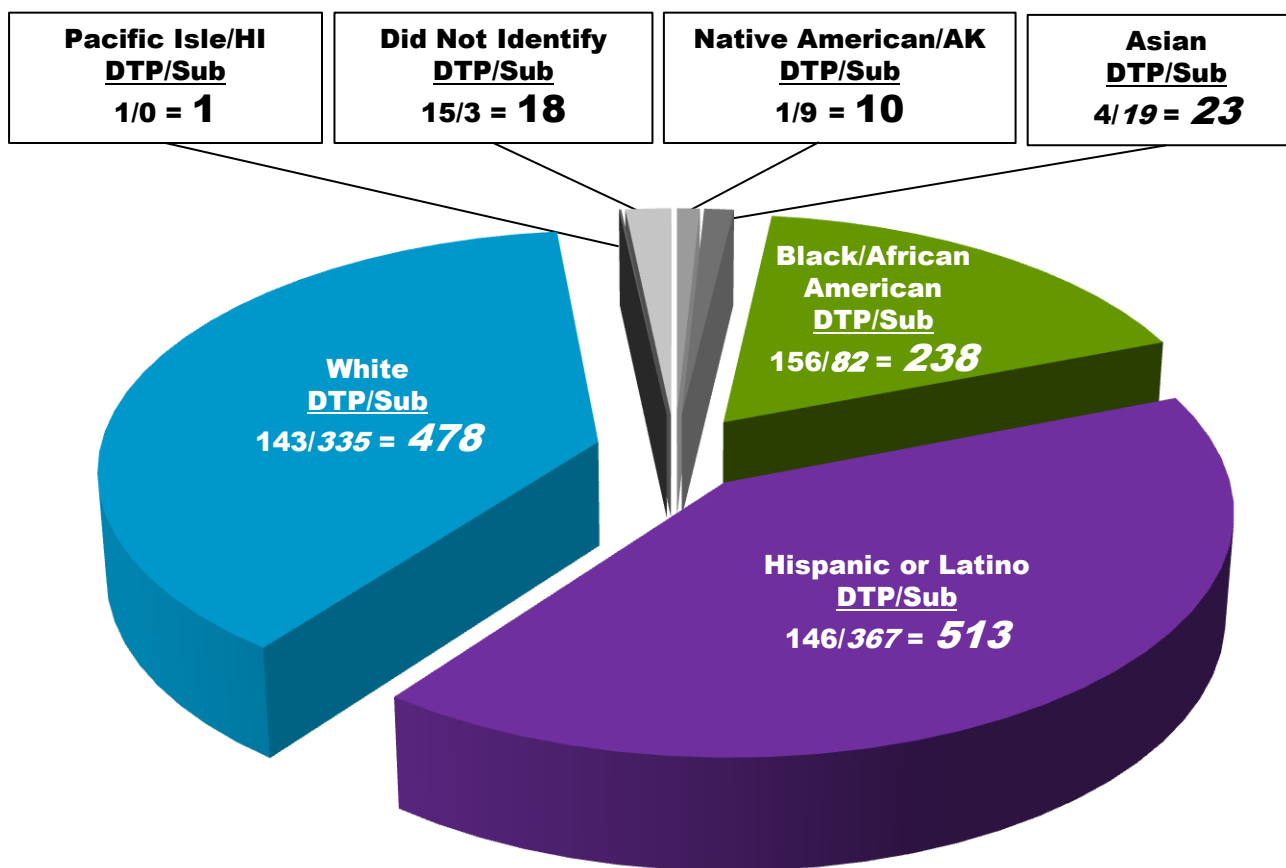


## DTP Direct and Subcontractor Craft by State during November 2012



**Total Craft for November 2012 = 1,281**

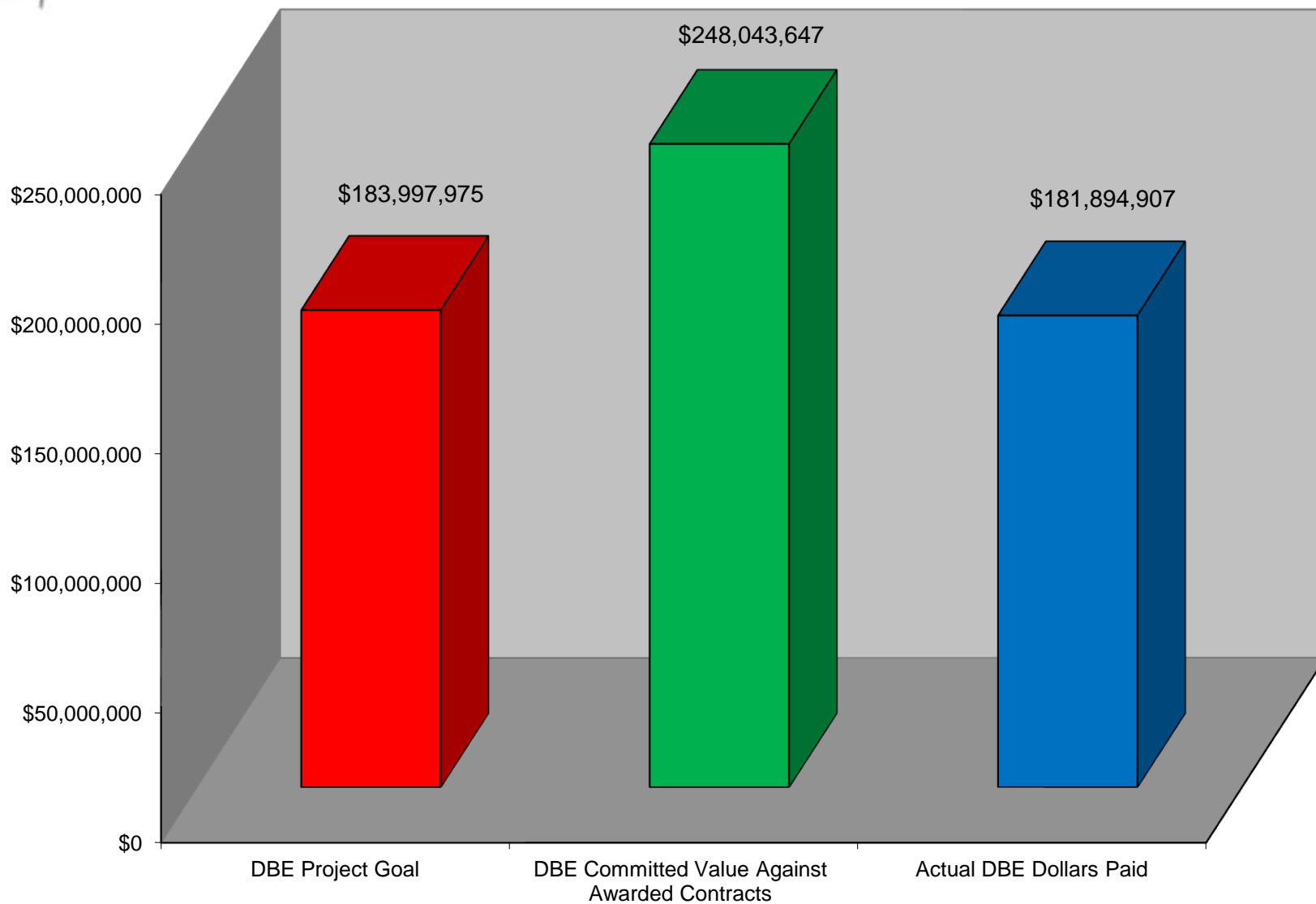
## DTP Direct and Subcontract Craft by Race/Ethnicity during November 2012



**Total Craft for November 2012 = 1,281**



## DTP DBE Goal Status as of November 30, 2012





## Construction Milestones

### Dates\*

#### 1. Civil

- Complete Acoustic Barriers – At-Grade 11/10/12 A
- Tysons Corner Pavilion ready for Ped Bridge Erection 11/21/12 A

#### 2. Stations

- Spring Hill South Pav ready for Ped Bridge Erection 11/10/12 A
- Spring Hill North Pav ready for Ped Bridge Erection 11/02/12 A

#### 3. Subcontracts

- Complete Running Rail & Cable Trough–TW Guideway 11/15/12 A
- Route 7 Final Road Shift @ Tysons West 01/28/13 F

#### 4. Start-Up

- Track ready for clearance car to Wiehle 12/05/12 A
- Submit 1<sup>st</sup> Dynamic Testing Readiness Report 02/04/13 F

\*A = Actual

F = Forecast





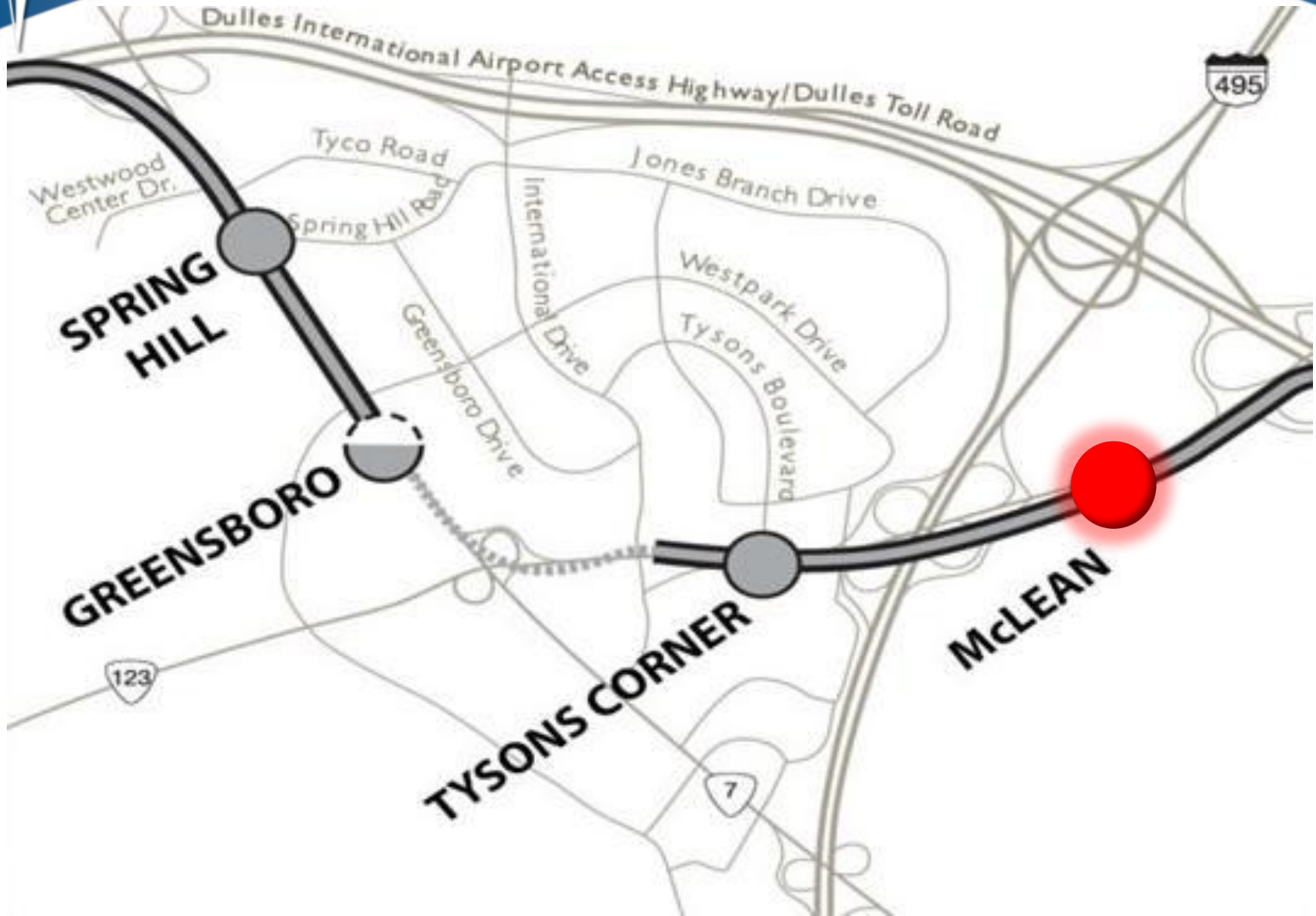
METROPOLITAN WASHINGTON AIRPORTS AUTHORITY



Clearance Car Testing



## McLean Station







METROPOLITAN WASHINGTON AIRPORTS AUTHORITY

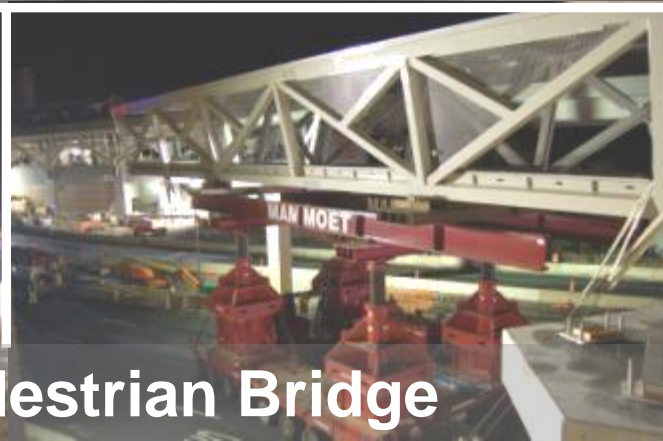


McLean Station





METROPOLITAN WASHINGTON AIRPORTS AUTHORITY



McLean Station – Pedestrian Bridge





METROPOLITAN WASHINGTON AIRPORTS AUTHORITY



McLean Station – September 2012





METROPOLITAN WASHINGTON AIRPORTS AUTHORITY



McLean Station – December 2012





METROPOLITAN WASHINGTON AIRPORTS AUTHORITY

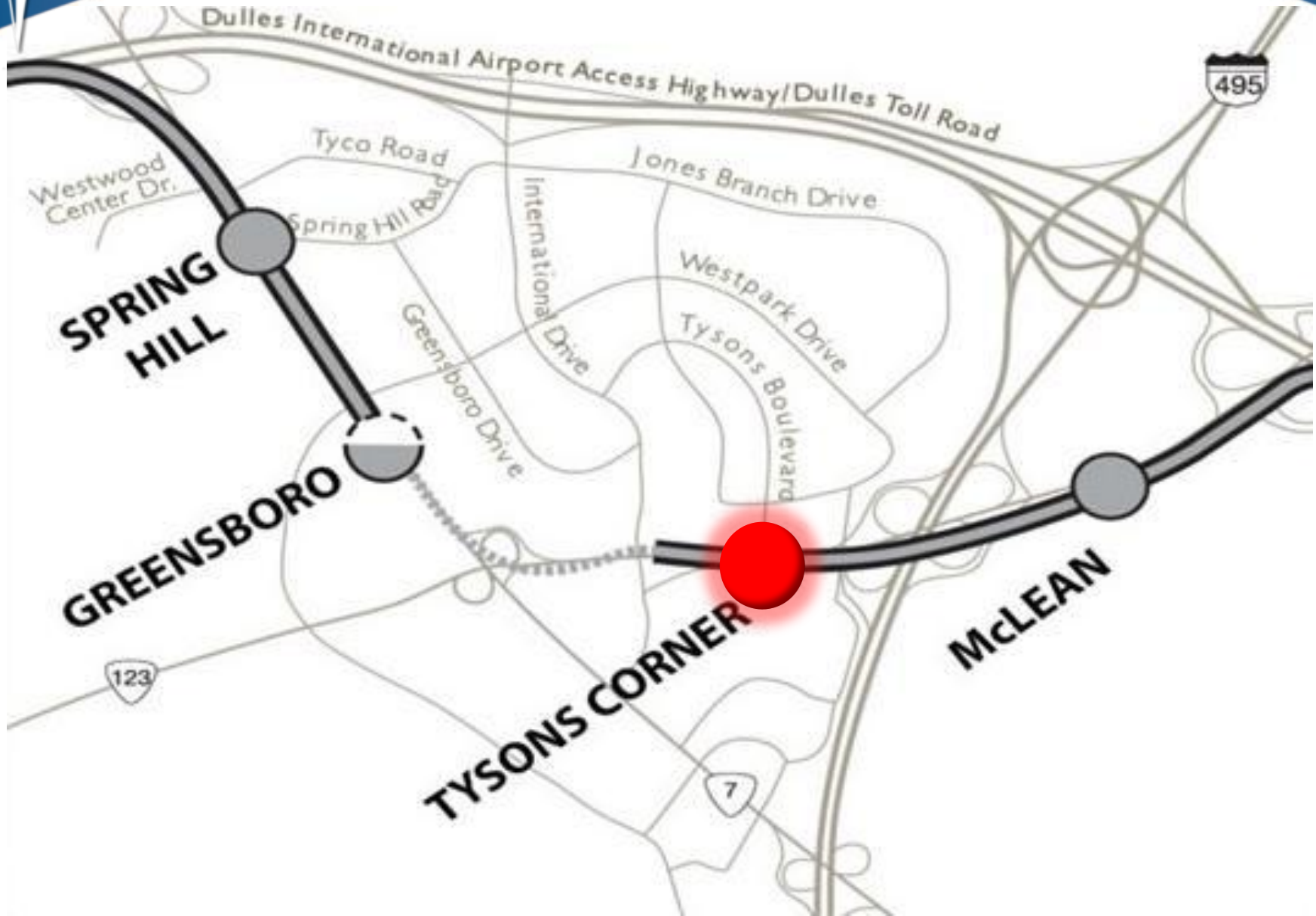


McLean Station – Rendering





# Tysons Corner Station





METROPOLITAN WASHINGTON AIRPORTS AUTHORITY



Tysons Corner Station – September 2012





METROPOLITAN WASHINGTON AIRPORTS AUTHORITY



Tysons Corner Station – December 2012





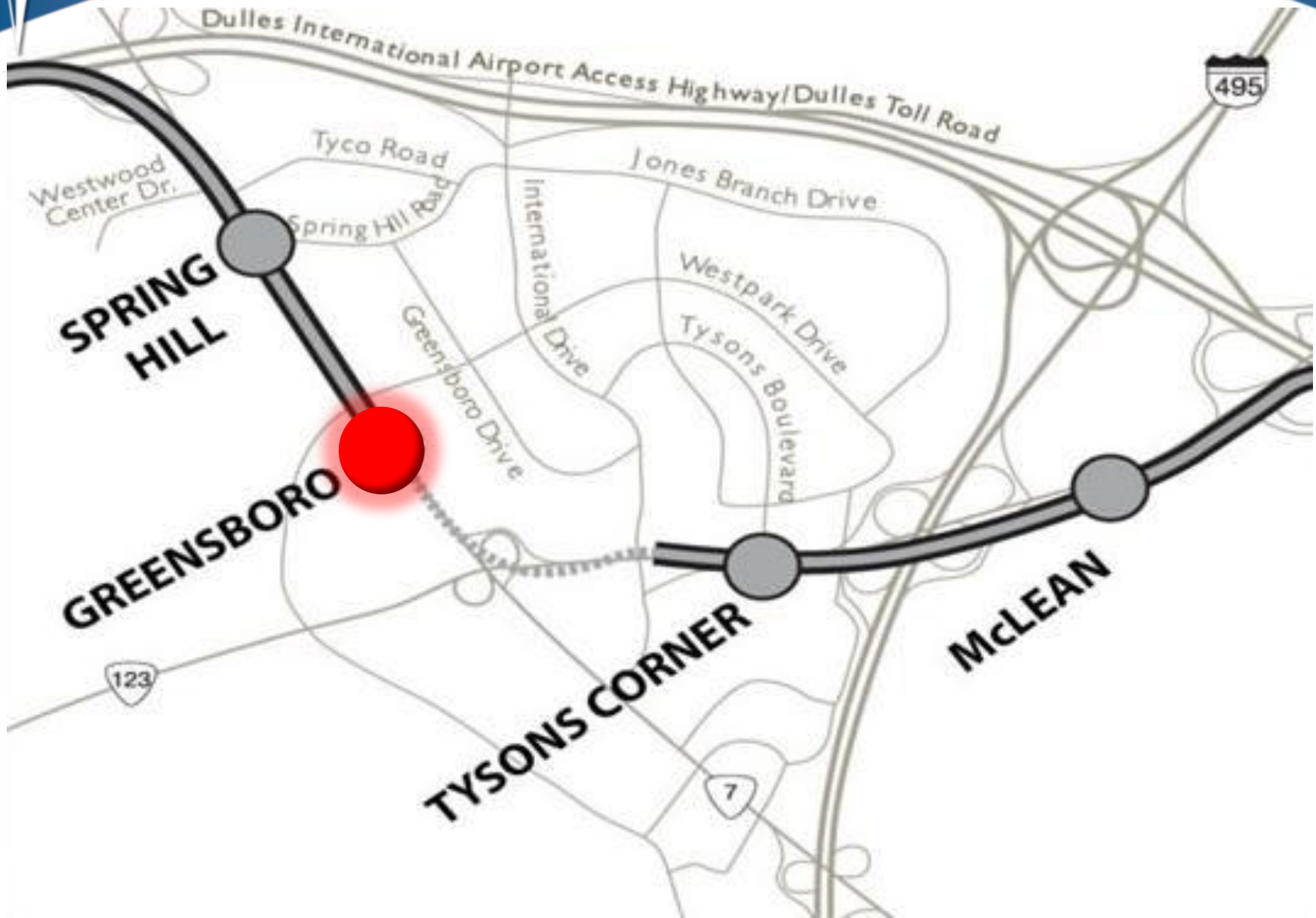
METROPOLITAN WASHINGTON AIRPORTS AUTHORITY



Tysons Corner Station



## Greensboro Station







METROPOLITAN WASHINGTON AIRPORTS AUTHORITY



Greensboro Station – September 2012

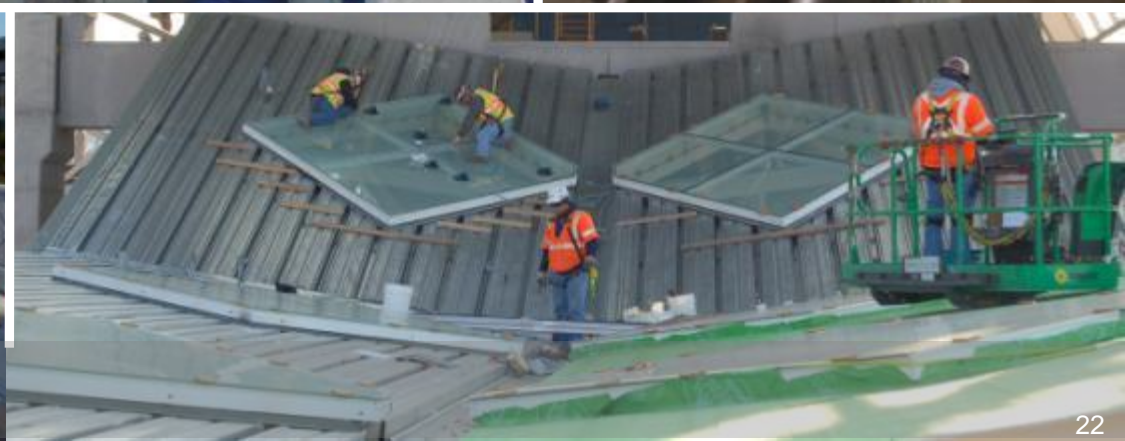


METROPOLITAN WASHINGTON AIRPORTS AUTHORITY



Greensboro Station – December 2012





Greensboro Station



METROPOLITAN WASHINGTON AIRPORTS AUTHORITY

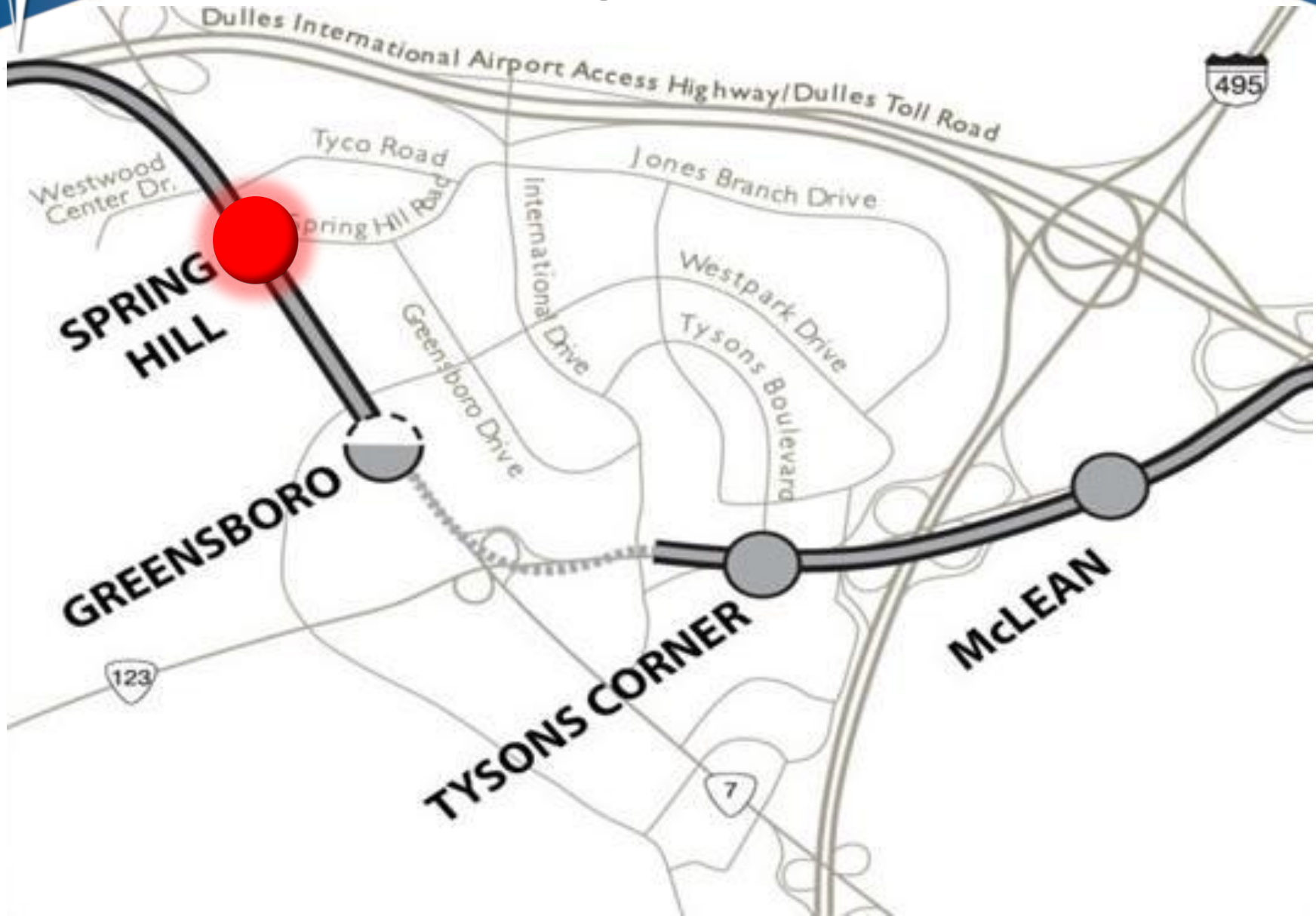


Westbound Route 7 and Frontage Road

## Greensboro Station – Pedestrian Bridges



## Spring Hill Station





METROPOLITAN WASHINGTON AIRPORTS AUTHORITY



Spring Hill Station





METROPOLITAN WASHINGTON AIRPORTS AUTHORITY



Spring Hill Station – Clearance Car Testing



METROPOLITAN WASHINGTON AIRPORTS AUTHORITY



Spring Hill Station – Pedestrian Bridges



# Wiehle-Reston East Station







METROPOLITAN WASHINGTON AIRPORTS AUTHORITY



Wiehle-Reston East Station – September 2012



METROPOLITAN WASHINGTON AIRPORTS AUTHORITY

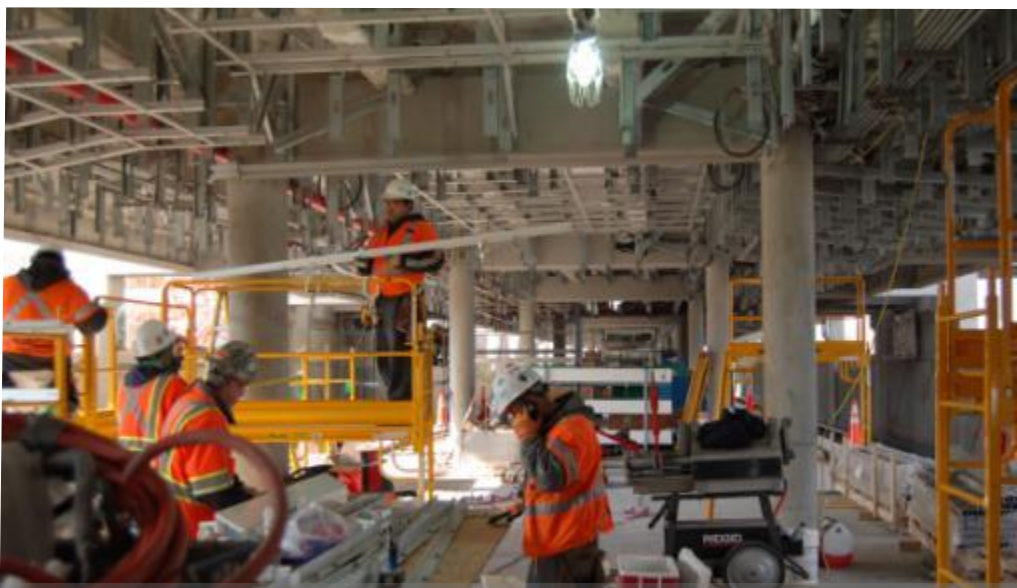


**Wiehle-Reston East Station – December 2012**





METROPOLITAN WASHINGTON AIRPORTS AUTHORITY



Wiehle-Reston East Station





METROPOLITAN WASHINGTON AIRPORTS AUTHORITY

**Route 123**



**Route 7**

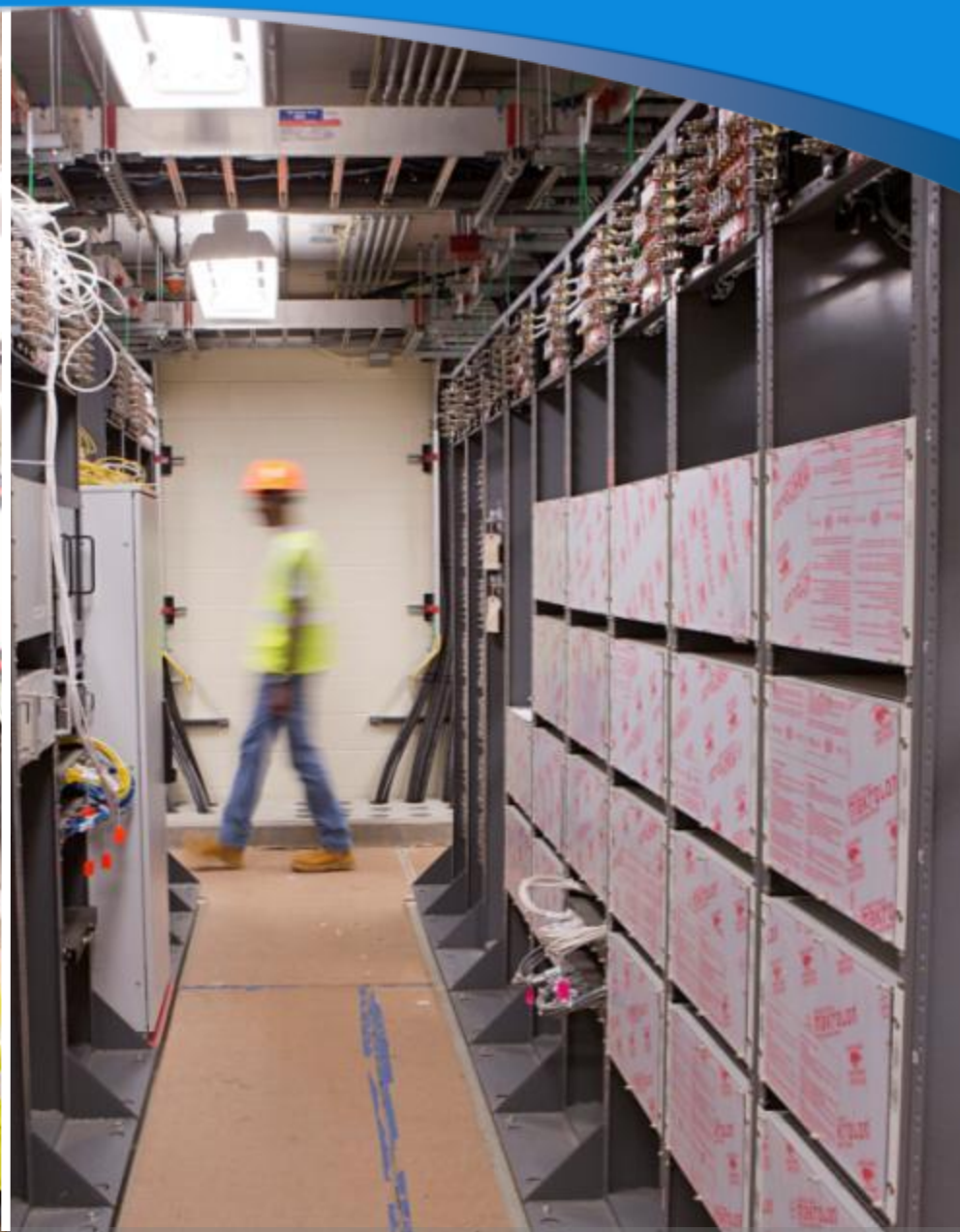


**DIAAH**



**Train Systems**





**Train Systems – Traction Power Substation (TPSS)**





METROPOLITAN WASHINGTON AIRPORTS AUTHORITY



**Traction Power Substations (TPSS)**



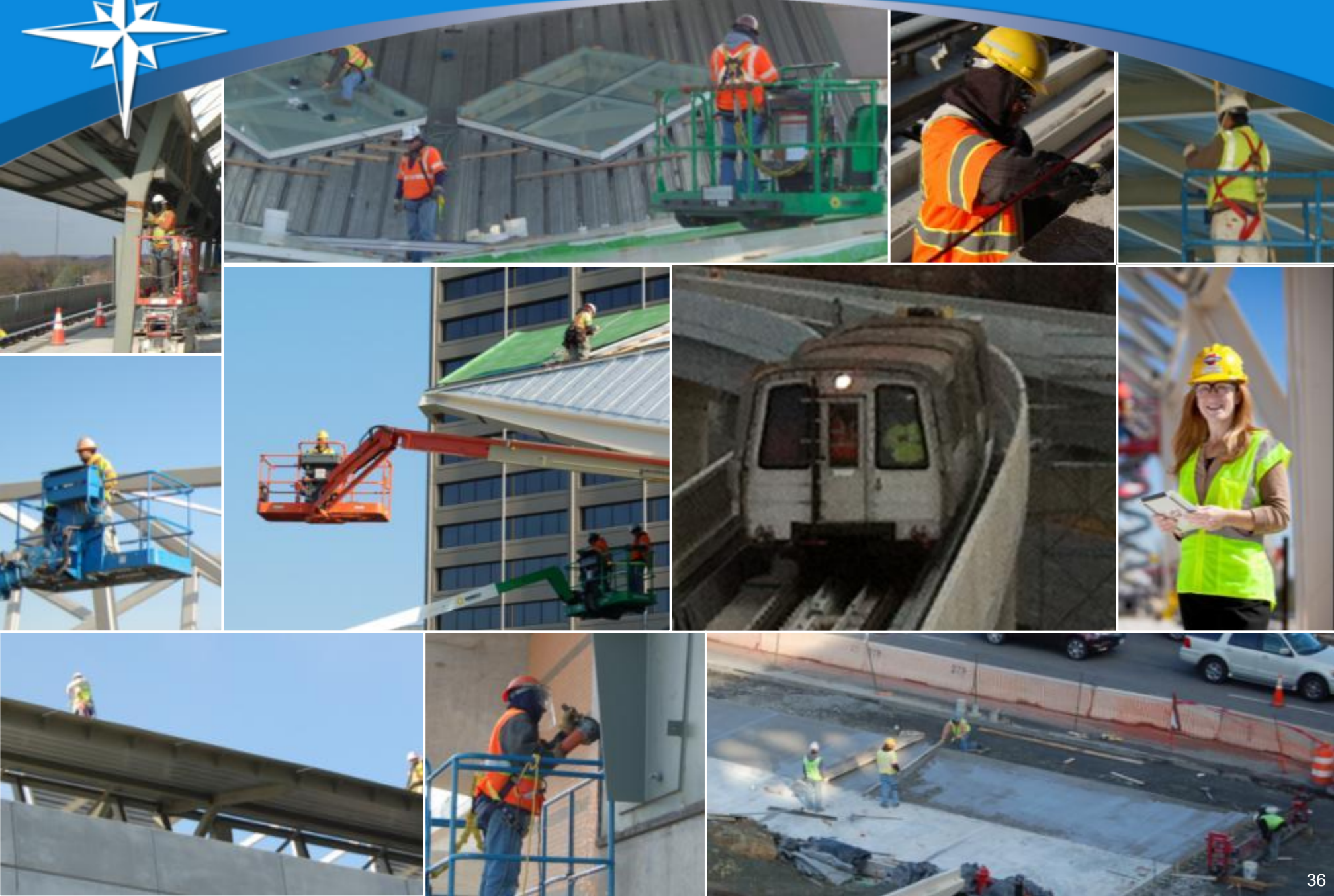


Stormwater Management Ponds





# METROPOLITAN WASHINGTON AIRPORTS AUTHORITY





# DULLES CORRIDOR METRORAIL PROJECT



METROPOLITAN WASHINGTON  
AIRPORTS AUTHORITY