

Dulles Corridor Metrorail Project Quarterly Update

Larry L. Melton
Project Executive Director
Dulles Transit Partners, LLC

April 2013



**Dulles Transit
Partners, LLC**

A team led by Bechtel

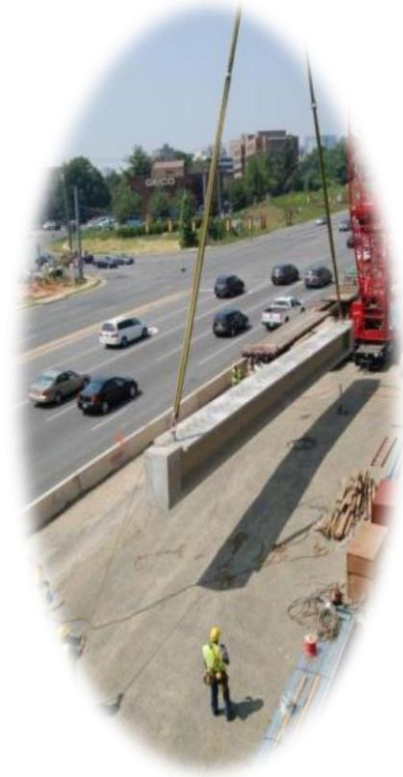
Environmental, Safety & Health Performance

1. Since Design-Build start (March 2009)

- No Environmental Enforcement Actions
- Lost Time Rate: 0.1 compared to industry rate of 2.1
- Recordable Incident Rate: 1.6 compared to industry rate of 3.9 (12.4 million man-hours)

2. Current Program Focus

- Rail operations, Energization, and Startup testing
- Controlled access to the right-of-way
- Performance of subcontractors and lower-tier subcontractors
- Accountability and recognition to sustain positive behaviors
- Preparation for close-out of environmental permits



Design-Build Schedule

1. MWAA and DTP have agreed on outstanding weather days from 2012 and they have been incorporated in the project schedule
2. Systems Task Group is finalizing installation of cable along the alignment with 2.5 million linear feet of cable already installed
3. Start up and Testing activities are progressing in coordination with MWAA and WMATA. Second Clearance Car tests complete and Dynamic Train testing in progress
4. Permit close outs are underway for Civil and Structural elements of the project
5. Project is 96 percent complete through February 2013



Project Staffing

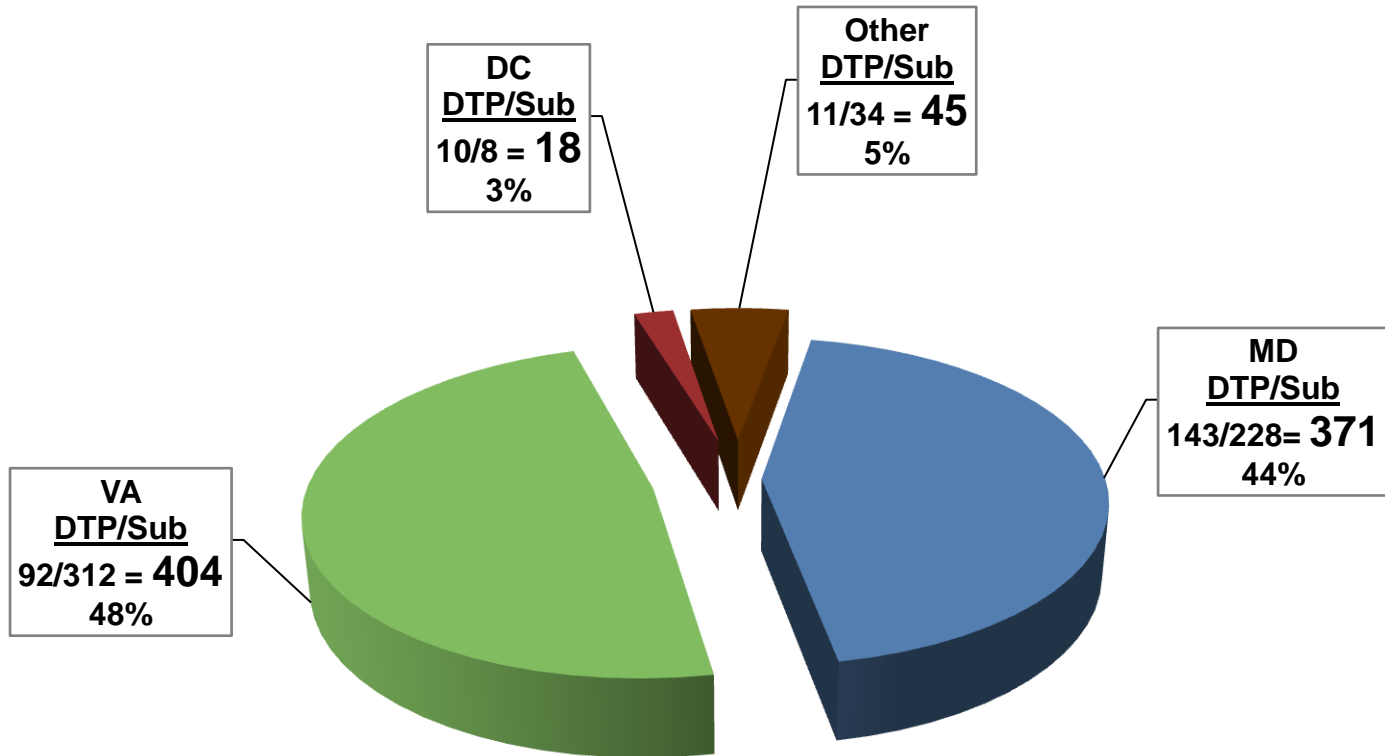
DTP Professional Staff	164
DTP Manual Craft	256
Subcontract Craft	582

February 2013





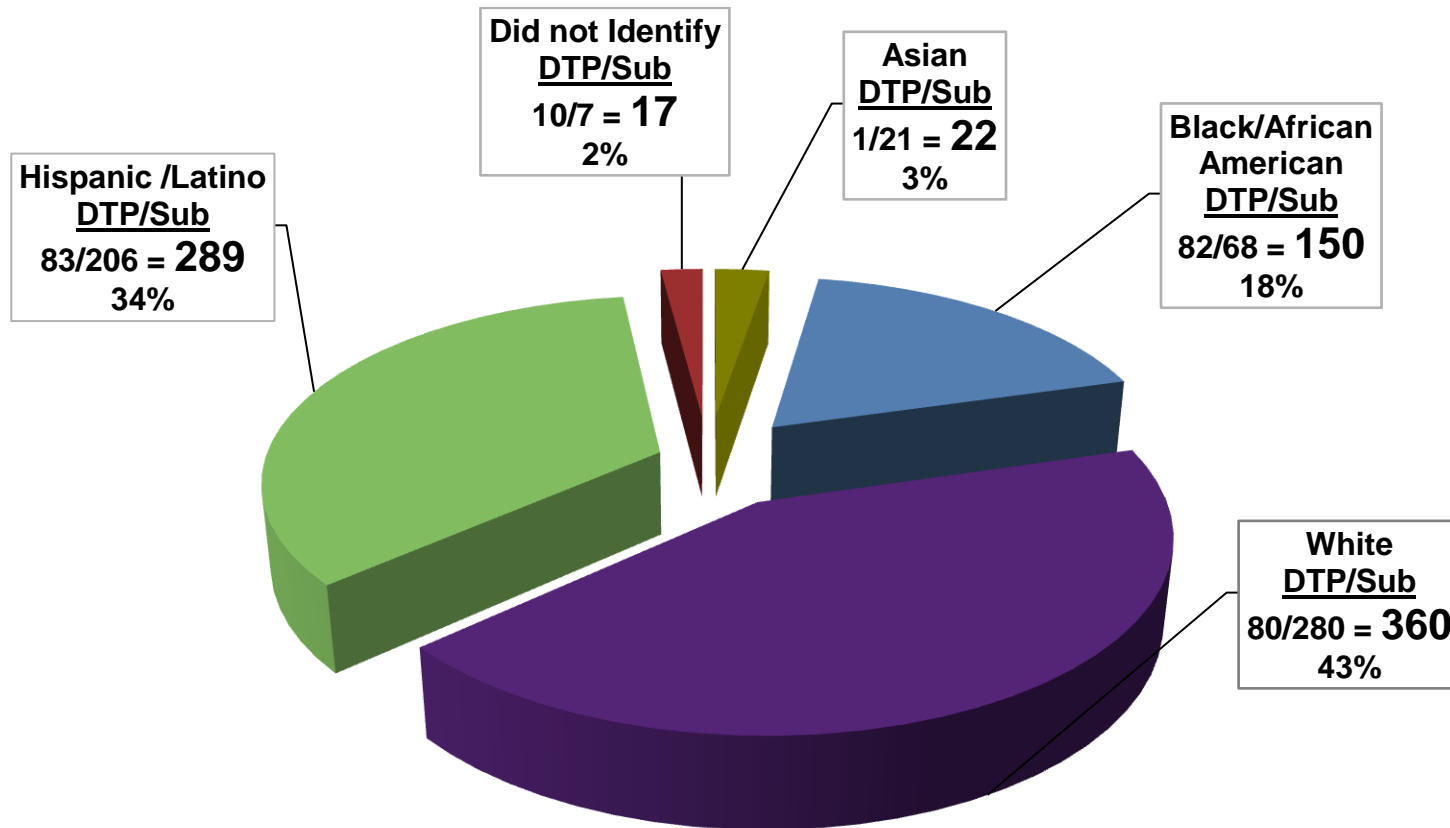
DTP Direct and Subcontractor Craft by State during February 2013



February 2013

Total Craft for February 2013 = **838**

DTP Direct and Subcontract Craft by Race/Ethnicity during February 2013

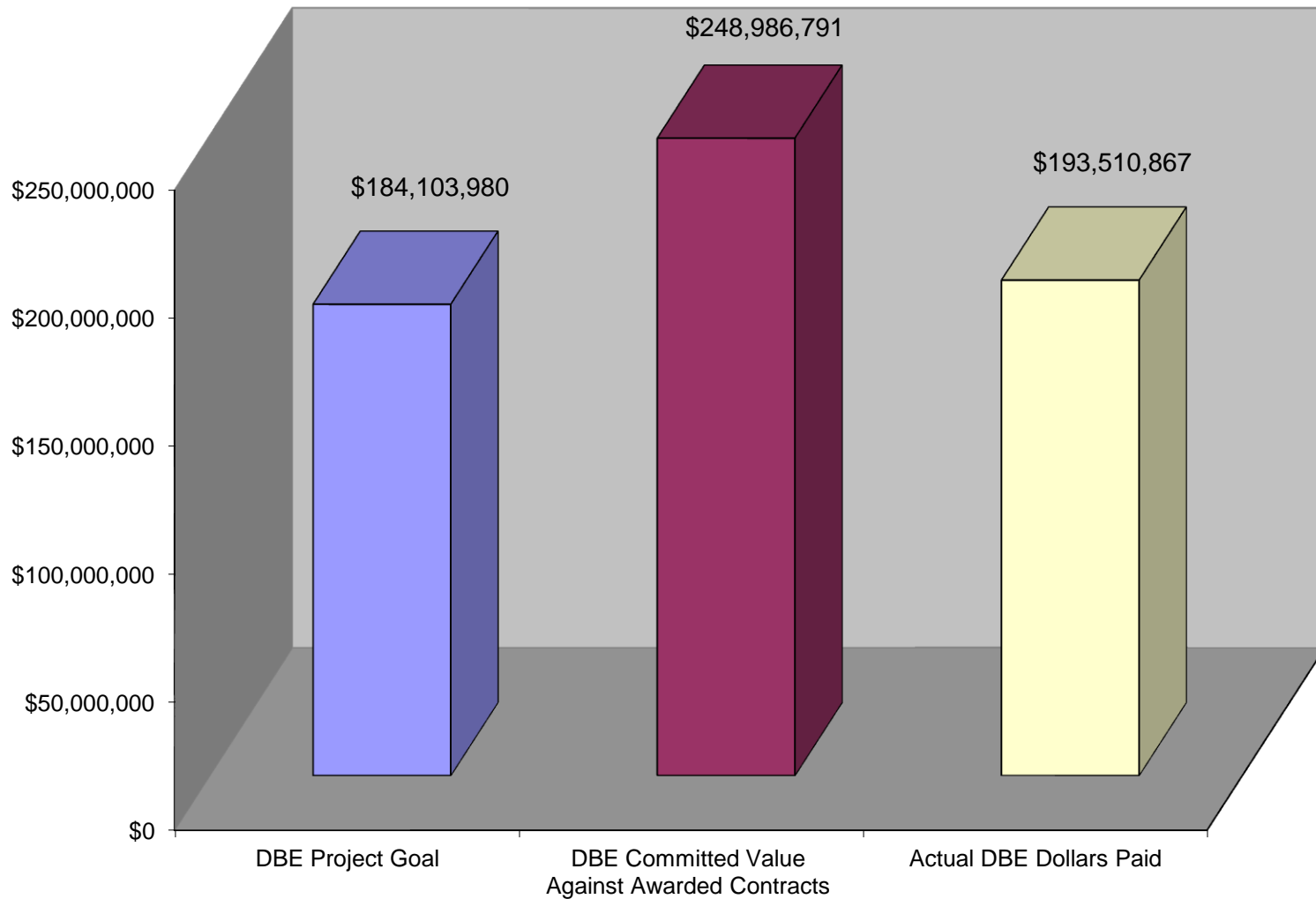


Total Craft for February 2013 = 838

February 2013



DTP DBE Goal Status as of February 28, 2013





Program Milestones

Dates*

1. Construction

- Pedestrian Bridges and Pavilion structures complete 01/25/13 A
- All installation of cable and terminations complete 04/19/13 F
- All Stations complete and ready for integration testing 06/15/13 F
- Route 7 Final Road shifts and streetscape complete 07/15/13 F

2. Start-up and testing

- Energize 3rd rail along the entire alignment 04/05/13 A
- Complete ETS/Remote monitoring testing 04/12/13 A
- Complete Dynamic Train Testing entire alignment 07/26/13 F
- Commence System Performance Demonstration testing 09/03/13 F

3. Project Close out and Turnover

- VA Department of General Services, VDOT and MWAA walkdowns complete 08/01/13 F
- DTP N-Line Substantial Completion Date (SSCD) 09/06/13 F
- DTP West Falls Church Yard Substantial Completion Target Date 12/30/13 F

*A = Actual

F = Forecast



Eight-Car Trains Testing



West Falls Church Yard





West Falls Church Yard



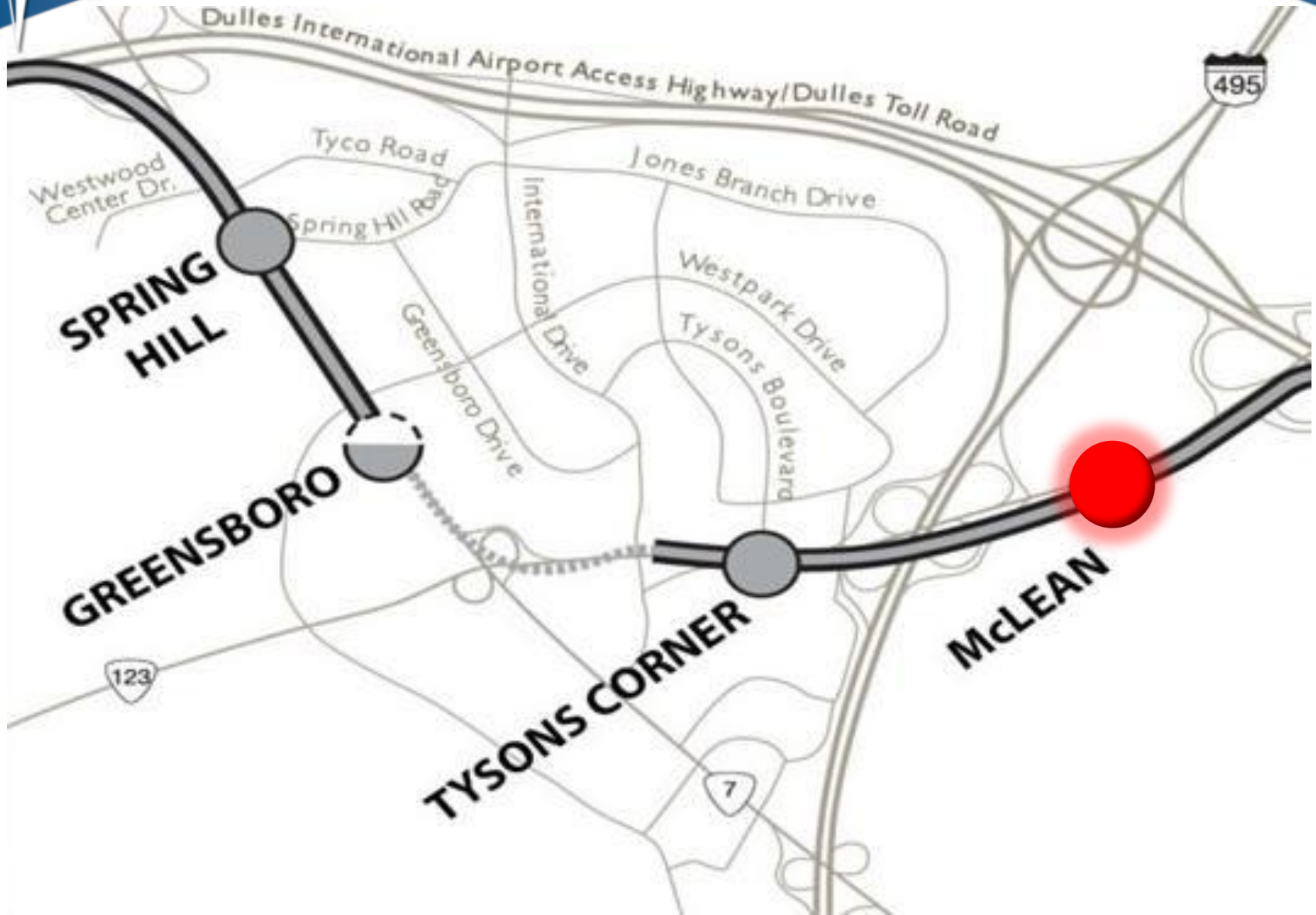
West Falls Church Yard



Dulles Connector Road Median Toward Tysons Corner



McLean Station

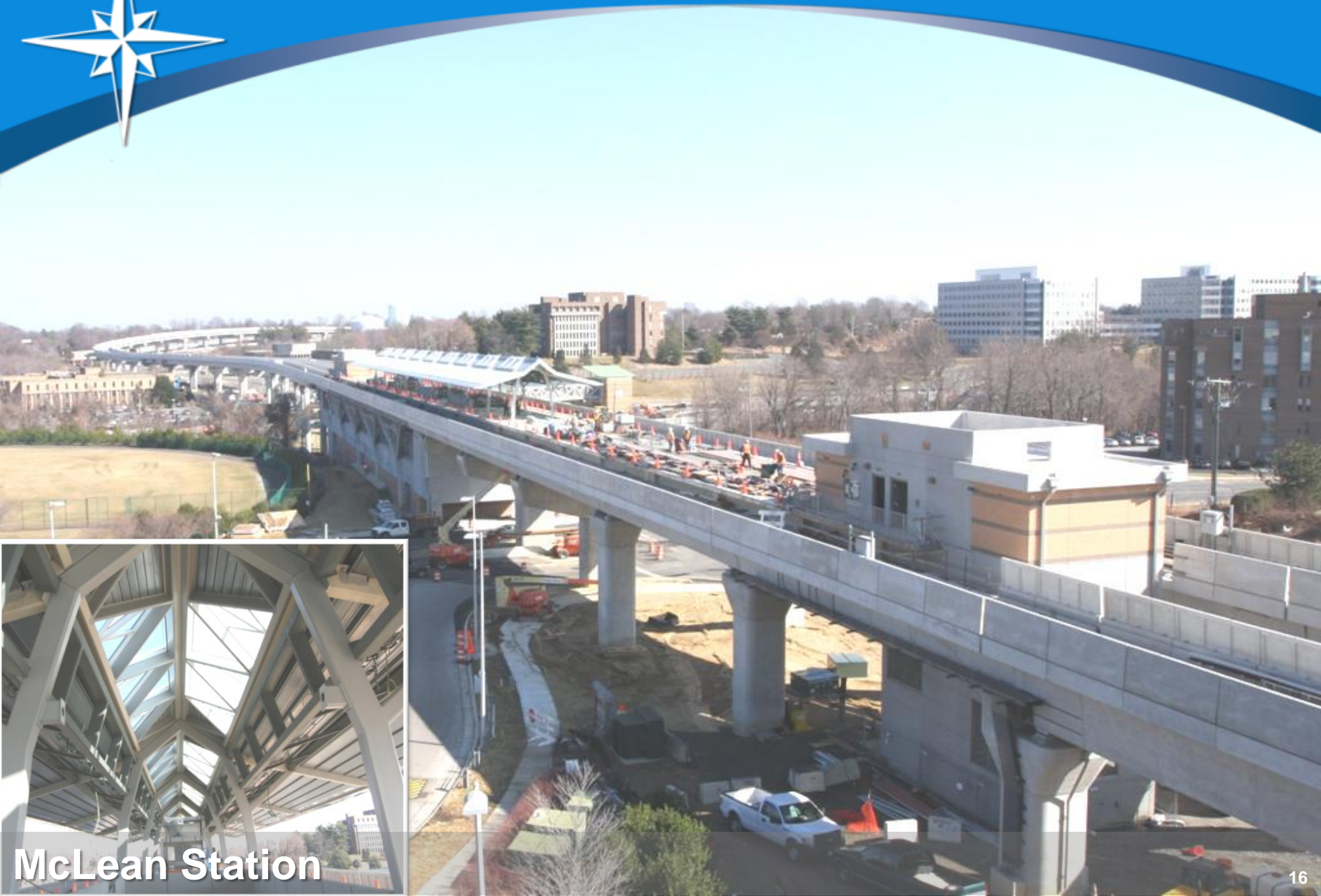




McLean Station – February 2013



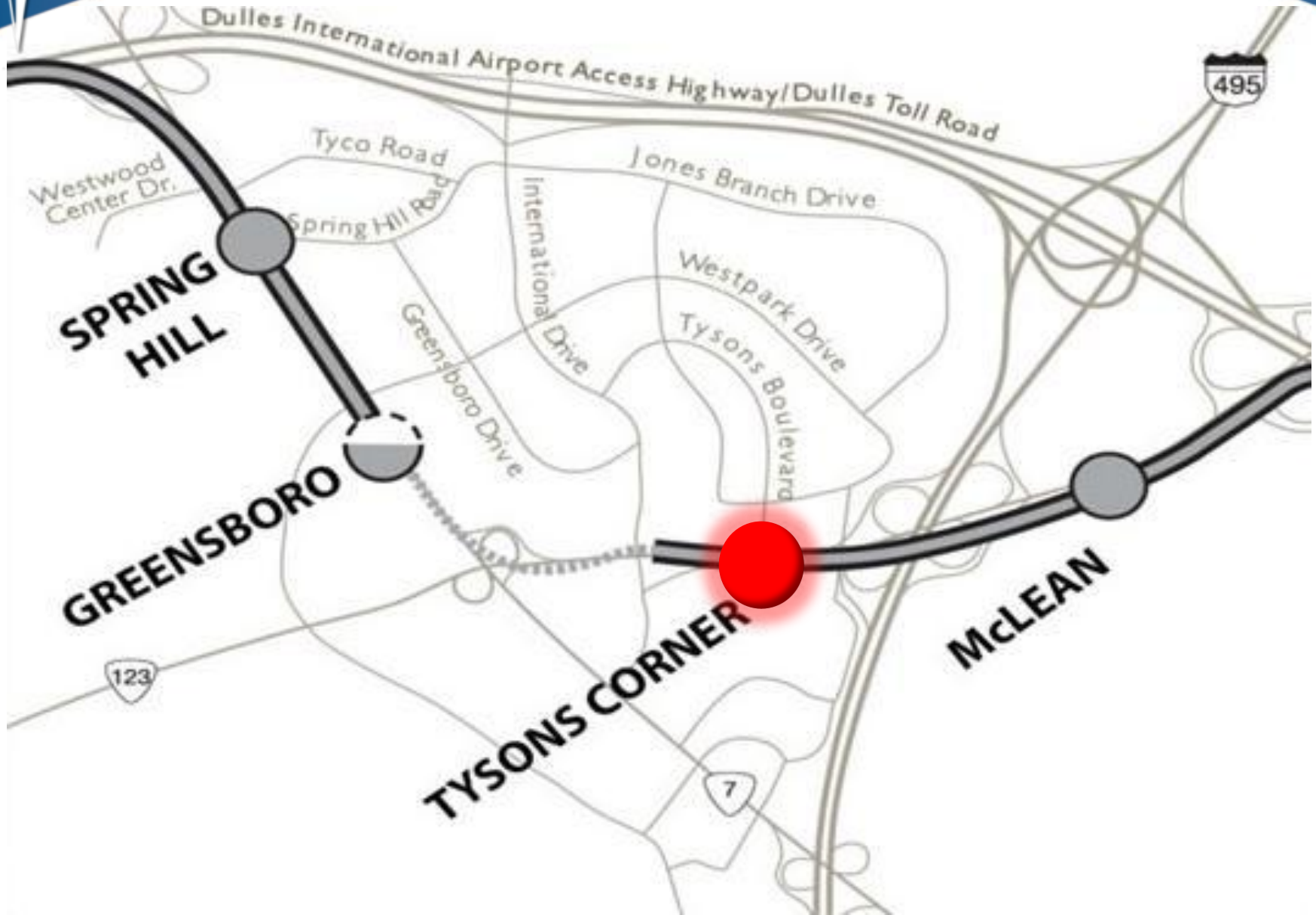
McLean Station – Rendering



McLean Station



Tysons Corner Station





Tysons Corner Station – December 2012



Tysons Corner Station – February 2013



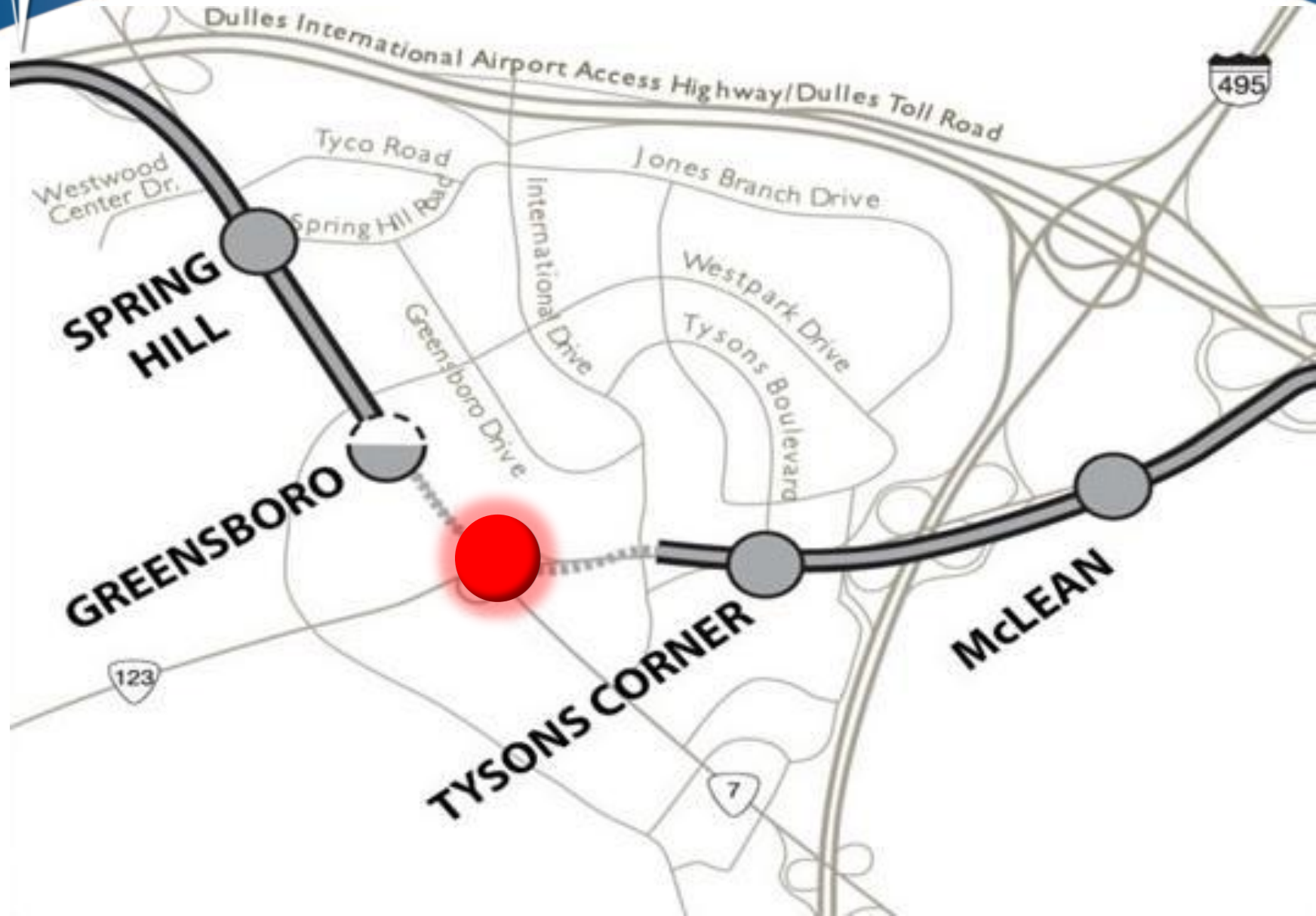
Tysons Corner Station and Pedestrian Bridge



Tysons Corner Station – Double Crossover into Tunnel



Tunnels





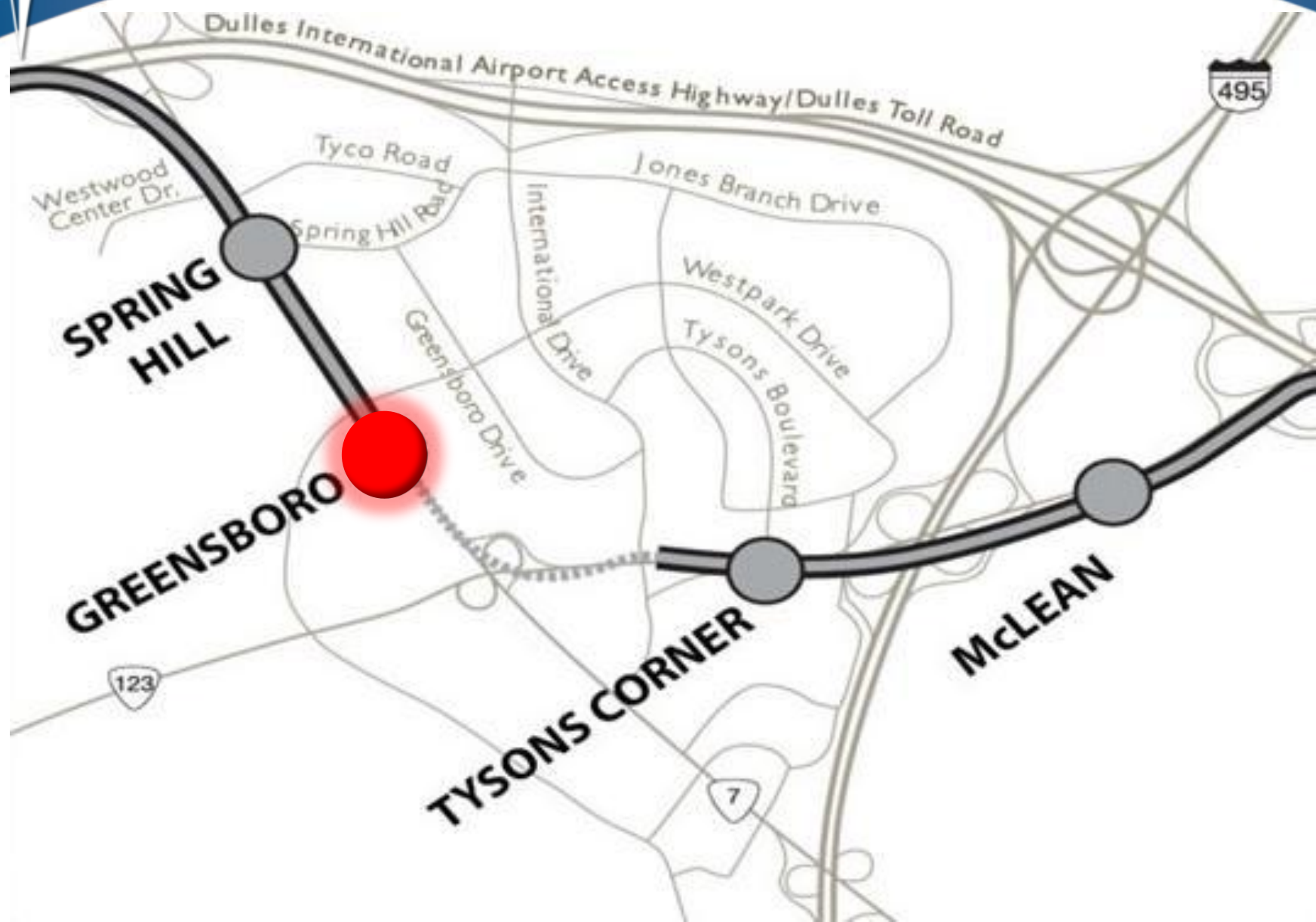
NATM Tunnel



Cut-and-Cover Tunnel



Greensboro Station





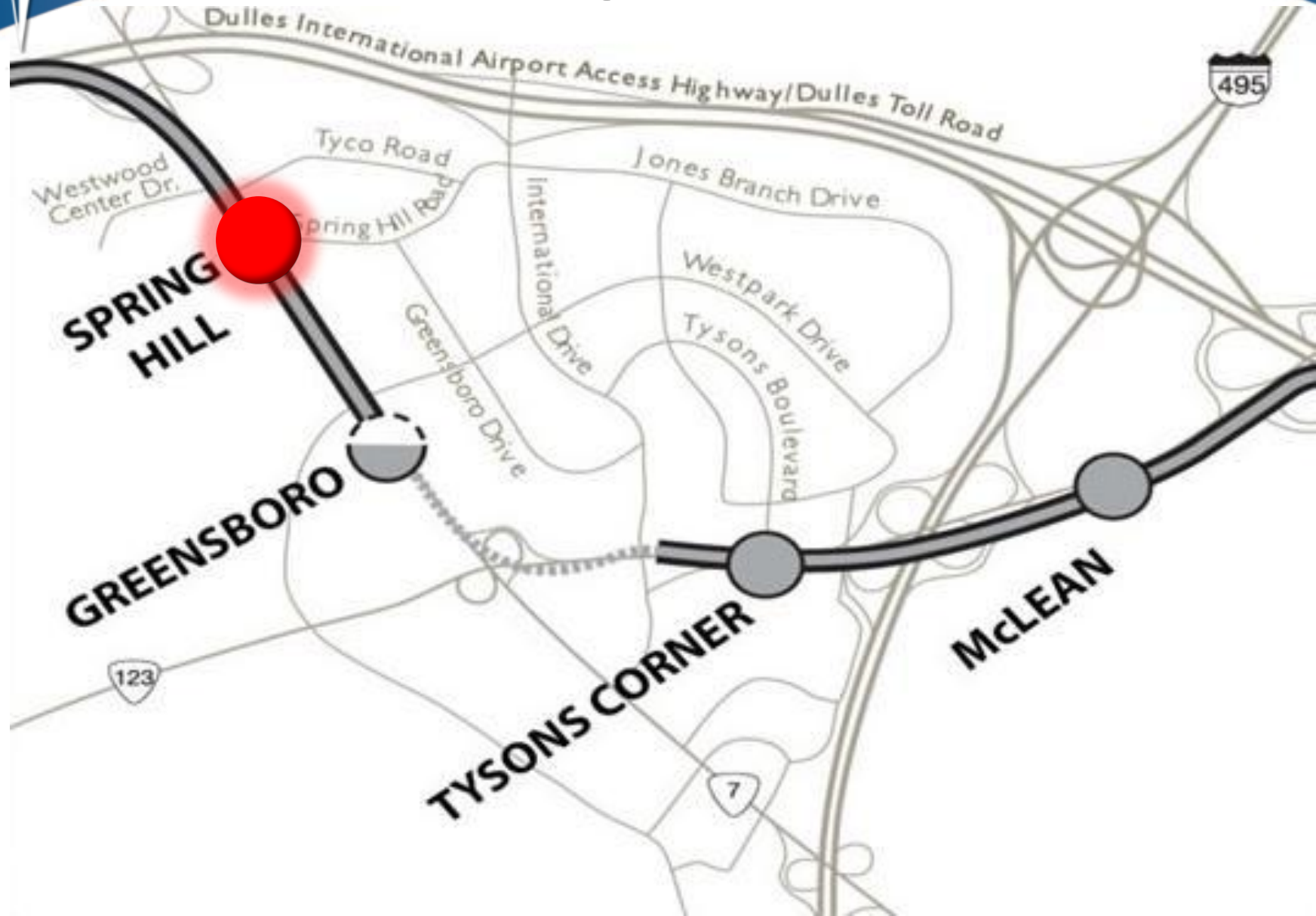
Greensboro Station – February 2013



Greensboro Station – Pedestrian Bridges and Elevators



Spring Hill Station





Spring Hill Station – December 2012



Spring Hill Station – February 2013



Spring Hill Station – Aerial View of Route 7



Wiehle-Reston East Station





Wiehle-Reston East Station – February 2013



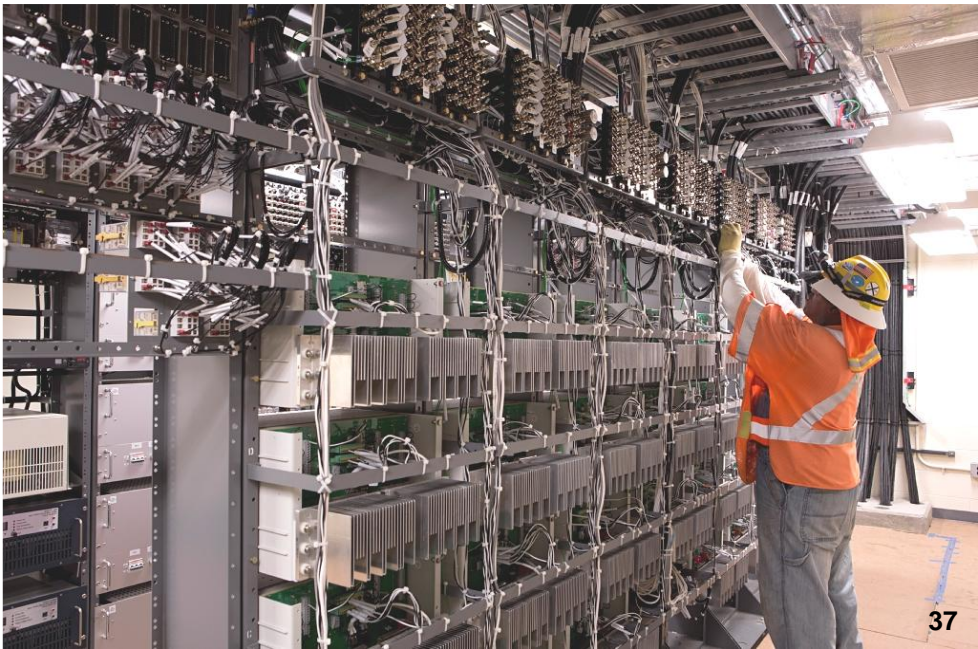
Wiehle-Reston East Station – Rendering



Wiehle-Reston East Station – Pedestrian Bridge

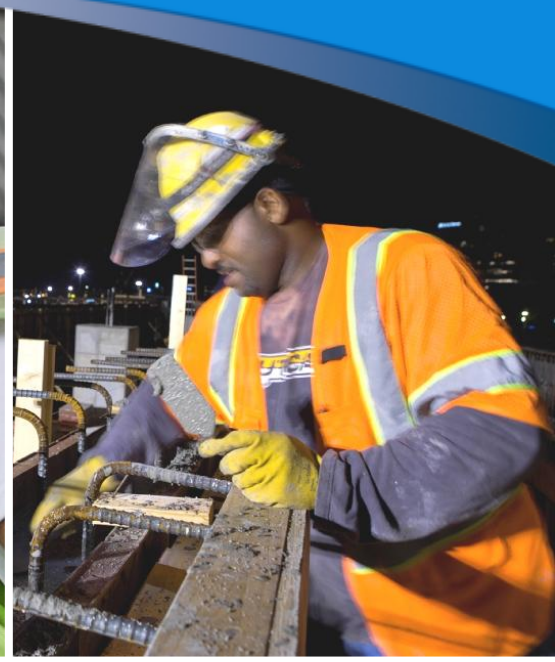


Testing and Commissioning



Testing and Commissioning

METROPOLITAN WASHINGTON AIRPORTS AUTHORITY



A large, thick red swoosh graphic that curves from the left side of the page towards the center, partially overlapping the text.

DULLES CORRIDOR METRORAIL PROJECT



METROPOLITAN WASHINGTON
AIRPORTS AUTHORITY