



## **Appendix B-1**

### **Introduction**

The intent of Section 4.2.2 is to give a general overview of the socioeconomic and demographic characteristics of Fairfax and Loudoun counties and the Washington PMSA and this section includes a limited number of summary tables and figures. Appendix B-1 contains more detailed tables and figures supporting the analysis in Section 4.2.2 - Socioeconomics/ Demographics. For example, most of the tables in the EIS section only include the total for the Washington PMSA whereas the Appendix tables concerning race, ethnicity, minority and Hispanic/Latino population trends, and income and age characteristics cite the detailed census data for all 25 jurisdictions encompassing the Washington PMSA.

Some of the Appendix tables give better insight into the local and regional economies. Several tables and figures show the population, employment, and unemployment trends of Loudoun and Fairfax counties and the Washington PMSA. The major employers in both counties are also included. The table concerning location quotients for the two counties and the PMSA reveals the strengths and weaknesses of the economic base.

Employment data for Northern Virginia is also included in the Appendix. Northern Virginia includes the following jurisdictions:

- City of Alexandria
- Arlington County
- City of Fairfax
- Fairfax County
- City of Falls Church
- Loudoun County
- City of Manassas
- City of Manassas Park
- Prince William County.

Data for Northern Virginia, available through the Bureau of Labor Statistics (BLS) of the US Department of Labor, was used to supplement detailed employment data provided by the Bureau of Economic Analysis (BEA) of the U.S. Department of Commerce. At the time that the analysis was conducted, summary data from BLS was available through 2002, whereas BEA data was only available through 2000. Changes in total employment from 2000 through 2002 were based on estimates using changes reported by BLS, thereby establishing more recent trends needed for forecasting.

**TABLE 1**

**NORTHERN VIRGINIA EMPLOYMENT, 1990-2002  
(EMPLOYMENT IN 1,000s)  
Washington Dulles International Airport  
Environmental Impact Statement**

<b>Year</b>	<b>Mining</b>	<b>Construction</b>	<b>Manufacturing</b>	<b>Transportation &amp; Public Utilities</b>	<b>Trade</b>	<b>FIRE</b>	<b>Services</b>	<b>Total Government</b>	<b>Total Employment</b>
1990	0.7	60.0	43.4	53.90	194.70	53.90	277.70	165.90	850.2
1991	0.6	44.4	41.7	52.40	188.10	52.20	278.40	170.00	827.8
1992	0.5	41.5	39.4	51.80	185.40	51.60	290.10	173.90	834.2
1993	0.5	45.0	39.4	52.90	192.10	54.30	303.70	175.00	862.9
1994	0.5	49.6	39.7	53.30	201.90	56.30	320.90	177.10	899.3
1995	0.6	50.3	39.7	55.90	208.30	53.60	343.10	176.80	928.3
1996	0.6	52.3	40.7	57.60	211.90	53.30	362.90	176.10	955.4
1997	0.7	55.9	43.3	60.50	215.10	55.50	389.40	179.16	999.6
1998	0.8	58.6	43.1	64.30	216.80	58.70	416.60	178.90	1,037.8
1999	0.8	63.2	40.0	69.60	222.80	60.80	446.70	182.90	1,086.8
2000	0.7	69.9	39.7	75.80	230.20	63.30	482.40	187.80	1,149.8
2001	0.7	74.4	40.4	81.00	231.90	64.50	487.70	189.90	1,170.5
2002	0.6	73.8	39.3	72.06	231.02	64.44	484.64	192.78	1,158.7
<b>Average Annual Growth Rate 1990-2002</b>	<b>-0.83%</b>	<b>1.74%</b>	<b>-0.83%</b>	<b>2.45%</b>	<b>1.44%</b>	<b>1.50%</b>	<b>4.75%</b>	<b>1.26%</b>	<b>2.61%</b>
<b>Annual Growth Rate 2001-2002</b>	<b>-9.52%</b>	<b>-0.77%</b>	<b>-2.78%</b>	<b>-11.04%</b>	<b>-0.38%</b>	<b>-0.09%</b>	<b>-0.63%</b>	<b>1.51%</b>	<b>-1.01%</b>

FIRE = Finance, Insurance and Real Estate Sector.

Note: Northern Virginia includes all jurisdictions in the Virginia portion of the Washington, D.C. PMSA – see Table 4.2.1-1 in Chapter 4 of the DEIS.

Source: US Department of Labor, Bureau of Labor Statistics, Covered Employment.  
The SGM Group, Inc., March 2003.

TABLE 2

NORTHERN VIRGINIA GOVERNMENT SECTOR, 1990-2002  
 (EMPLOYMENT IN 1,000s)  
 Washington Dulles International Airport  
 Environmental Impact Statement

Year	Federal Government	State Government	Local Government	Total Government	Total Employment
1990	76.10	13.20	76.60	165.90	850.2
1991	78.40	13.50	78.10	169.90	827.8
1992	80.40	14.50	79.00	173.90	834.2
1993	80.00	15.10	79.90	175.00	862.9
1994	79.50	15.60	82.00	177.10	899.3
1995	78.40	15.10	83.30	176.80	928.3
1996	76.50	14.60	85.00	176.10	955.4
1997	77.26	14.80	87.10	179.20	999.6
1998	74.40	15.10	89.40	178.90	1,037.8
1999	74.10	15.50	93.30	182.90	1,086.8
2000	74.30	16.40	97.10	187.80	1,149.8
2001	72.20	16.40	101.30	189.90	1,170.5
2002	70.37	16.48	105.93	192.78	1,158.7
<b>Average Annual Growth Rate 1990-2002</b>	<b>-0.65%</b>	<b>1.87%</b>	<b>2.74%</b>	<b>1.26%</b>	<b>2.61%</b>
<b>Annual Growth Rate 2001-2002</b>	<b>-2.54%</b>	<b>0.51%</b>	<b>4.57%</b>	<b>1.51%</b>	<b>-1.01%</b>

Source: US Department of Labor, Bureau of Labor Statistics, Covered Employment.  
 The SGM Group, Inc., March 2003.

**TABLE 3**

**POPULATION AND EMPLOYMENT OF LOUDOUN AND FAIRFAX COUNTIES, 1990-2002**  
**Washington Dulles International Airport**  
**Environmental Impact Statement**

<b>Year</b>	<b>Population</b>	<b>Wage and Salary Employment</b>
1990	933,913	518,175
1991	956,215	500,298
1992	977,647	504,354
1993	997,082	521,619
1994	1,017,873	544,414
1995	1,038,009	561,003
1996	1,061,848	583,371
1997	1,089,146	613,451
1998	1,112,727	645,369
1999	1,143,580	685,011
2000	1,171,223	731,548
2001	1,198,980	744,718
2002	1,228,261	737,189

Sources: Bureau of Economic Analysis, 2003.  
US Census, US Census Projections, 2001.  
The SGM Group, Inc., March 2003.

TABLE 4

LOCATION QUOTIENTS FOR LOUDOUN AND FAIRFAX COUNTIES  
AND THE WASHINGTON PMSA, 1990 AND 2002  
Washington Dulles International Airport  
Environmental Impact Statement

Economic Sector	Loudoun County	Fairfax County	Washington PMSA
<b>Construction</b>			
1990	2.05	1.13	0.97
2000	1.66	1.03	0.98
<b>Manufacturing*</b>			
1990	0.83	0.59	0.56
1998	0.91	0.52	0.60
<b>Transportation</b>			
1990	2.93	1.06	1.00
2000	2.94	1.30	0.99
<b>Wholesale Trade</b>			
1990	1.23	1.28	0.84
2000	1.17	1.12	0.84
<b>Finance</b>			
1990	0.85	1.30	1.00
2000	0.69	1.17	0.99
<b>Services</b>			
1990	0.79	1.14	1.07
2000	0.82	1.22	1.07
<b>Retail Trade</b>			
1990	0.87	1.04	0.94
2000	1.09	0.93	0.93
<b>Government</b>			
1990	0.64	0.73	1.12
2000	0.67	0.67	1.08

Comparing Loudoun and Fairfax Counties and the Washington PMSA to the BEA "Region 13," defined as a combination of the DC and Baltimore PMSA as a whole indicates where relative economic strengths are concentrated. Using data for 1990 and 2000 (1998 for the manufacturing sector), location quotients for major economic sectors reveal which of these sectors act as "basic" or export sectors within the regional economy. The location quotients shown in the table apply BEA numbers for individual counties and for the Washington PMSA. Generally, a sector of the economy is classified as an exporting component if the location quotient is *greater than one*, indicating that these sectors are considered a strength and specialty for the local economy. Location quotients *with a value equal to one* indicate that the local employment sector is similar to that of the combined DC-Baltimore PMSA employment values and that the sector is considered to be at "equilibrium." Import sectors with location quotients *less than one* indicate that the local employment in that sector is less than the combined PMSA values and that this sector is relatively weak in the local economy.

\*Note: Manufacturing data is only available through 1998.

Source: Bureau of Economic Analysis. 2003.  
The SGM Group, Inc., March 2003.

**TABLE 5**

**UNEMPLOYMENT RATES OF THE WASHINGTON PMSA,  
FAIRFAX AND LOUDOUN COUNTIES, 1990-2002**  
Washington Dulles International Airport  
Environmental Impact Statement

<b>Year</b>	<b>Washington PMSA</b>	<b>Fairfax County</b>	<b>Loudoun County</b>
1990	3.4%	1.9%	1.6%
1991	4.9%	3.3%	3.6%
1992	5.6%	4.0%	4.4%
1993	5.0%	3.4%	3.4%
1994	4.3%	3.1%	3.3%
1995	4.4%	2.9%	2.9%
1996	4.0%	2.8%	2.4%
1997	3.8%	2.3%	2.1%
1998	3.3%	1.6%	1.3%
1999	2.7%	1.6%	1.1%
2000	2.4%	1.2%	0.9%
2001	3.2%	2.3%	2.9%
2002	3.2%	2.4%	3.3%

Source: US Department of Labor, Bureau of Labor Statistics, March 2003.

**TABLE 6**

**MAJOR PRIVATE SECTOR EMPLOYERS IN FAIRFAX COUNTY,  
DECEMBER 2001  
Washington Dulles International Airport  
Environmental Impact Statement**

<b>Company</b>	<b>Type of Business</b>	<b>Employees in Fairfax County</b>
Inova Health Systems	Health Services	9,000-10,000
Science Applications International Corp	Engineering, Accounting & Research Management Services	5,000-6,000
Booz-Allen & Hamilton	Business Services	4,000-5,000
Lockheed Martin	Business Services/Transportation Equipment	3,000-4,000
American Management Systems	Business Services	3,000-4,000
Raytheon	Business Services/Manufacturing	3,000-4,000
Northrop Grumman	Business Services/Engineering, Accounting & Research Services	3,000-4,000
Federal Home Loan Mortgage Corp. (Freddie Mac)	Nondepository Credit Institutions	3,000-4,000
Nextel Communications	Communications	3,000-4,000
Navy Federal Credit Union	Depository Institutions	2,000-3,000
ExxonMobil	Petroleum Refining & Related Industries	2,000-3,000
Sprint	Communications	2,000-3,000
Verizon	Communications	2,000-3,000
Accenture	Business Services	2,000-3,000
WorldCom	Communications	2,000-3,000
TRW	Engineering, Accounting & Research Services/Transportation Equipment	2,000-3,000
Electronic Data Systems	Business Services	2,000-3,000
Cable & Wireless USA	Communications	2,000-3,000
PricewaterhouseCoopers	Business Services	2,000-3,000
Mitre Corp.	Engineering, Accounting & Research Services	2,000-3,000

Source: Fairfax County Economic Development Authority, December 2001.



**TABLE 7**

**MAJOR EMPLOYERS IN LOUDOUN COUNTY, MAY 2002**  
**Washington Dulles International Airport**  
**Environmental Impact Statement**

<b>Company</b>	<b>Type of Business</b>	<b>Employees in Loudoun County</b>
America Online, Inc.	Internet Service provider	1,000-5,000
Atlantic Coast Airlines/United Express	Airline Carrier	1,000-5,000
Loudoun Healthcare, Inc.	Hospital	1,000-5,000
Metropolitan Washington Airports Authority	Airport Authority	1,000-5,000
Orbital Sciences Corporation	Space Vehicles, Commercial Physical Research	1,000-5,000
United Airlines	Airline Carrier	1,000-5,000
World Com/UUNet	Telecommunications	1,000-5,000
Airline Tariff Publishing Co.	Travel Data Services and Solutions	500-1,000
Federal Aviation Administration	Flight Management Center	500-1,000
Landsdowne Conference Resort	Hotel and Conference Accommodations	500-1,000
Marriott Host International	Hotel Accommodations	500-1,000
ARAMARK Corporation	Managed Services	250-500
Barber & Ross	Lumber Processing	250-500
Computer Sciences Corporation	Information Technology	250-500
Dynamic Details, Inc.	Printed Circuit Board Manufacturing	250-500
Dynatran/Dynalectric Company	Electrical Contractor	250-500
First American Field Services	Property and Real Estate Services	250-500
Loudoun Medical Group PC	Medical Clinics	250-500
N.E.W. Customer Service Companies, Inc.	Electronic Customer Service Provider	250-500
National Association of Letter Carriers	Union	250-500

Source: Loudoun County Department of Economic Development, May 2002.

**TABLE 8**

**COMPARATIVE RATES OF CHANGE, 1992-2002  
Washington Dulles International Airport  
Environmental Impact Statement**

<b>Year</b>	<b>Percent Change in BEA Employment Loudoun and Fairfax Counties</b>	<b>Percent Change in Enplanements</b>	<b>Percent Change in BLS Employment Northern Virginia</b>
1992	0.81	5.67	0.77
1993	3.42	-3.67	3.44
1994	4.37	6.03	4.22
1995	3.05	3.43	3.22
1996	3.99	8.00	2.92
1997	5.16	5.54	4.62
1998	5.20	15.17	3.83
1999	6.14	25.57	4.72
2000	6.79	1.76	5.80
2001	1.80	-10.54	1.80
2002	-1.01	-4.54	-1.01

BEA = Bureau of Economic Analysis (US Department of Commerce).  
BLS = Bureau of Labor Statistics (US Department of Labor).

Source: The SGM Group, Inc., March 2003.

TABLE 9

**RACIAL AND ETHNIC CHARACTERISTICS OF THE WASHINGTON PMSA, 2000**  
**Washington Dulles International Airport**  
**Environmental Impact Statement**

Jurisdiction	One Race						Two or More Races	Percent Minority	Hispanic or Latino	
	White	Black or African American	American Indian	Asian	Hawaiian and Other Pacific Islander	Some Other Race			Number	Percent
<b>District of Columbia</b>	176,101	343,312	1,713	15,189	348	21,950	13,446	69.2	44,953	7.9
<b>Maryland</b>										
Calvert County	62,578	9,773	220	655	21	368	948	16.1	1,135	1.5
Charles County	82,587	31,411	907	2,192	70	869	2,510	31.5	2,722	2.3
Frederick County	174,432	12,429	404	3,269	61	1,806	2,876	10.7	4,664	2.4
Montgomery County	565,719	132,256	2,544	98,651	412	43,642	30,117	35.2	100,604	11.5
Prince George's County	216,729	502,550	2,795	31,032	447	27,078	20,884	73.0	57,057	7.1
<b>Virginia</b>										
<b>Counties</b>										
Arlington County	130,601	17,705	662	16,327	143	15,786	8,229	31.1	35,268	18.6
Clarke County	11,532	852	24	62	4	70	108	8.9	185	1.5
Culpeper County	26,816	6,220	112	225	5	394	490	21.7	858	2.5
Fairfax County	677,904	83,098	2,561	126,038	691	44,019	35,438	30.1	106,958	11.0
Fauquier County	48,740	4,844	146	324	19	331	735	11.6	1,114	2.0
King George County	13,055	3,148	80	169	12	76	263	22.3	301	1.8
Loudoun County	140,419	11,683	358	9,067	105	3,837	4,130	17.2	10,089	5.9
Prince William County	193,574	52,691	1,094	10,701	368	12,207	10,178	31.1	27,338	9.7
Spotsylvania County	74,924	11,255	288	1,243	45	941	1,699	17.1	2,536	2.8
Stafford County	75,807	11,211	417	1,512	93	1,123	2,283	18.0	3,342	3.6
Warren County	29,280	1,526	84	136	7	145	406	7.3	494	1.6
<b>Cities</b>										
Alexandria	76,702	28,915	355	7,249	112	9,467	5,483	40.2	18,882	14.7
Fairfax	15,675	1,090	73	2,617	16	1,326	701	27.1	2,932	13.6
Falls Church	8,817	340	25	675	7	261	252	15.0	876	8.4
Fredericksburg	14,108	3,935	65	291	11	494	375	26.8	945	4.9
Manassas	25,316	4,535	128	1,206	31	2,773	1,146	27.9	5,316	15.1
Manassas Park	7,490	1,149	45	418	7	838	343	27.2	1,544	15.0
<b>West Virginia</b>										
Berkeley County	70,392	3,558	186	350	17	428	974	7.3	1,156	1.5
Jefferson County	38,400	2,571	120	252	17	254	576	9.0	734	1.7
<b>PMSA</b>	<b>2,957,698</b>	<b>1,282,057</b>	<b>15,406</b>	<b>329,850</b>	<b>3,069</b>	<b>190,483</b>	<b>144,590</b>	<b>39.9</b>	<b>432,003</b>	<b>8.8</b>

Source: U.S. Census Bureau, Census 2000.

TABLE 10

COMPARISON OF THE MINORITY POPULATION OF THE WASHINGTON PMSA, 1990 AND 2000  
 Washington Dulles International Airport  
 Environmental Impact Statement

Jurisdiction	1990		2000		1990-2000	
	Number	Percent of Total Population	Number	Percent of Total Population	Net Change	Percent Change
<b>District of Columbia</b>	<b>426,903</b>	<b>70.3</b>	<b>395,958</b>	<b>69.2</b>	<b>-30,945</b>	<b>-7.2</b>
<b>Maryland</b>						
Calvert County	8,547	16.6	11,985	16.1	3,438	40.2
Charles County	20,920	20.7	37,959	31.5	17,039	81.4
Frederick County	10,299	6.9	20,845	10.7	10,546	102.4
Montgomery County	176,392	23.3	307,622	35.2	131,230	74.4
Prince George's County	414,652	56.9	584,786	73.0	170,134	41.0
<b>Virginia</b>						
<b>Counties</b>						
Arlington County	40,063	23.4	58,852	31.1	18,789	46.9
Clarke County	1,117	9.2	1,120	8.9	3	0.3
Culpeper County	5,222	18.8	7,446	21.7	2,224	42.6
Fairfax County	153,185	18.7	291,845	30.1	138,660	90.5
Fauquier County	6,084	12.5	6,399	11.6	315	5.2
King George County	2,930	21.7	3,748	22.3	818	27.9
Loudoun County	9,034	10.5	29,180	17.2	20,146	223.0
Prince William County	35,977	16.7	87,239	31.1	51,262	142.5
Spotsylvania County	7,183	12.5	15,471	17.1	8,288	115.4
Stafford County	5,690	9.3	16,639	18.0	10,949	192.4
Warren County	1,496	5.7	2,304	7.3	808	54.0
<b>Cities</b>						
Alexandria	34,394	30.9	51,581	40.2	17,187	50.0
Fairfax	2,792	14.2	5,823	27.1	3,031	108.6
Falls Church	1,045	10.9	1,560	15.0	515	49.3
Fredericksburg	4,559	24.0	5,171	26.8	612	13.4
Manassas	4,625	16.5	9,819	27.9	5,194	112.3
Manassas Park	793	11.8	2,800	27.2	2,007	253.1
<b>West Virginia</b>						
Berkeley County	2,742	4.6	5,513	7.3	2,771	101.1
Jefferson County	2,967	8.3	3,790	9.0	823	27.7
<b>PMSA</b>	<b>1,379,611</b>	<b>32.7</b>	<b>1,965,455</b>	<b>39.9</b>	<b>585,844</b>	<b>42.5</b>

Source: U.S. Census Bureau, 1990 and 2000 Census.

TABLE 11

**COMPARISON OF THE HISPANIC/LATINO POPULATION OF THE WASHINGTON PMSA,  
1990 AND 2000**

**Washington Dulles International Airport  
Environmental Impact Statement**

Jurisdiction	1990		2000		1990-2000	
	Number	Percent of Total Population	Number	Percent of Total Population	Net Change	Percent Change
<b>District of Columbia</b>	32,710	5.4	44,953	7.9	12,243	37.4
<b>Maryland</b>						
Calvert County	502	1.0	1,135	1.5	633	126.1
Charles County	1,705	1.7	2,722	2.3	1,017	59.6
Frederick County	1,713	1.1	4,664	2.4	2,951	172.3
Montgomery County	55,684	7.4	100,604	11.5	44,920	80.7
Prince George's County	29,983	4.1	57,057	7.1	27,074	90.3
<b>Virginia</b>						
<b>Counties</b>						
Arlington County	23,089	13.5	35,268	18.6	12,179	52.7
Clarke County	82	0.7	185	1.5	103	125.6
Culpeper County	192	0.7	858	2.5	666	346.9
Fairfax County	51,874	6.3	106,958	11.0	55,084	106.2
Fauquier County	602	1.2	1,114	2.0	512	85.0
King George County	156	1.2	301	1.8	145	92.9
Loudoun County	2,156	2.5	10,089	5.9	7,933	367.9
Prince William County	9,662	4.5	27,338	9.7	17,676	182.9
Spotsylvania County	843	1.5	2,536	2.8	1,693	200.8
Stafford County	1,252	2.0	3,342	3.6	2,090	166.9
Warren County	248	0.9	494	1.6	246	99.2
<b>Cities</b>						
Alexandria	10,778	9.7	18,882	14.7	8,104	75.2
Fairfax	1,159	5.9	2,932	13.6	1,773	153.0
Falls Church	604	6.3	876	8.4	272	45.0
Fredericksburg	463	2.4	945	4.9	482	104.1
Manassas	1,601	5.7	5,316	15.1	3,715	232.0
Manassas Park	314	4.7	1,544	15.0	1,230	391.7
<b>West Virginia</b>						
Berkeley County	399	0.7	1,156	1.5	757	189.7
Jefferson County	428	1.2	734	1.7	306	71.5
<b>PMSA</b>	<b>228,199</b>	<b>5.4</b>	<b>432,003</b>	<b>8.8</b>	<b>203,804</b>	<b>89.3</b>

Source: U.S. Census Bureau, 1990 and 2000 Census.

**TABLE 12**

**HOUSEHOLD INCOME CHARACTERISTICS OF THE WASHINGTON PMSA, 2000**  
**Washington Dulles International Airport**  
**Environmental Impact Statement**

Jurisdiction	Less than \$10,000	\$10,000 to \$14,999	\$15,000 to \$24,999	\$25,000 to \$34,999	\$35,000 to \$49,999	\$50,000 to \$74,999	\$75,000 to \$99,999	\$100,000 or more	Total Households	Median Household Income	Population Below Poverty*	
											Number	Percent
<b>District of Columbia</b>	36,939	14,594	28,443	30,592	35,311	39,553	22,437	40,721	248,590	\$40,127	109,500	20.2
<b>Maryland</b>												
Calvert County	845	613	1,595	2,143	3,527	6,129	4,971	5,605	25,428	\$65,945	3,235	4.4
Charles County	1,793	968	2,536	3,832	6,278	10,340	7,499	8,429	41,675	\$62,199	6,518	5.5
Frederick County	2,754	2,260	5,519	6,554	11,063	16,815	11,846	13,304	70,115	\$60,276	8,550	4.5
Montgomery County	12,040	8,046	18,325	24,406	41,248	65,955	49,573	105,347	324,940	\$71,551	47,024	5.4
Prince George's County	14,683	8,246	23,156	32,178	48,531	67,370	43,778	48,708	286,650	\$55,256	60,196	7.7
<b>Virginia</b>												
<b>Counties</b>												
Arlington County	4,485	2,306	5,459	7,914	12,300	18,604	12,292	23,114	86,474	\$63,001	14,371	7.8
Clarke County	336	161	480	625	752	1,231	617	748	4,950	\$51,601	811	6.6
Culpeper County	760	690	1,567	1,478	2,196	2,735	1,457	1,268	12,151	\$45,290	2,983	9.2
Fairfax County	9,203	5,918	14,818	20,760	38,919	70,343	59,372	131,946	351,279	\$81,050	43,396	4.5
Fauquier County	943	650	1,290	1,792	2,891	4,682	2,907	4,734	19,889	\$61,999	2,964	5.4
King George County	258	245	670	704	1,179	1,374	931	731	6,092	\$49,882	917	5.6
Loudoun County	1,239	723	2,515	3,262	6,598	12,635	11,774	21,175	59,921	\$80,648	4,637	2.8
Prince William County	2,509	1,705	5,237	8,180	14,192	23,308	17,224	22,307	94,662	\$65,960	12,182	4.4
Spotsylvania County	962	891	2,735	3,222	5,129	8,259	5,340	4,721	31,259	\$57,525	4,247	4.7
Stafford County	791	696	1,663	2,460	4,230	7,754	6,241	6,301	30,136	\$66,809	3,138	3.5
Warren County	993	620	1,347	1,786	2,256	2,735	1,419	969	12,125	\$42,422	2,631	8.5
<b>Cities</b>												
Alexandria	3,408	1,949	4,754	6,625	10,248	13,244	8,091	13,649	61,968	\$56,054	11,279	8.9
Fairfax	229	123	443	505	1,230	1,917	1,441	2,125	8,013	\$67,642	1,205	5.7
Falls Church	157	121	259	246	590	865	630	1,604	4,472	\$74,924	432	4.2
Fredericksburg	809	765	1,207	1,295	1,248	1,382	564	816	8,086	\$34,585	2,632	15.5
Manassas	349	379	818	1,115	1,922	2,861	2,041	2,300	11,785	\$60,409	2,151	6.3
Manassas Park	88	89	181	295	510	976	665	449	3,253	\$60,794	530	5.2
<b>West Virginia</b>												
Berkeley County	2,832	1,679	4,272	4,375	5,855	6,378	2,452	1,773	29,616	\$38,763	8,556	11.5
Jefferson County	1,358	1,085	2,015	1,835	2,747	3,546	1,966	1,627	16,179	\$44,374	4,231	10.3
<b>PMSA</b>	<b>100,763</b>	<b>55,522</b>	<b>131,304</b>	<b>168,179</b>	<b>260,950</b>	<b>390,991</b>	<b>277,528</b>	<b>464,471</b>	<b>1,849,708</b>	<b>\$62,216</b>	<b>358,316</b>	<b>7.4</b>

\* The US Census uses a set of money income thresholds that vary by family size and composition to define whom is poor. If a family's total income is less than that family's threshold, then that family, and every individual in it, is considered poor. The poverty thresholds do not vary geographically. The official poverty definition counts money income before taxes and excludes capital gains and noncash benefits (such as public housing, Medicaid, and food stamps). (US Census Bureau [Online] 03 March 26.)

Source: U.S. Census Bureau, Census 2000.

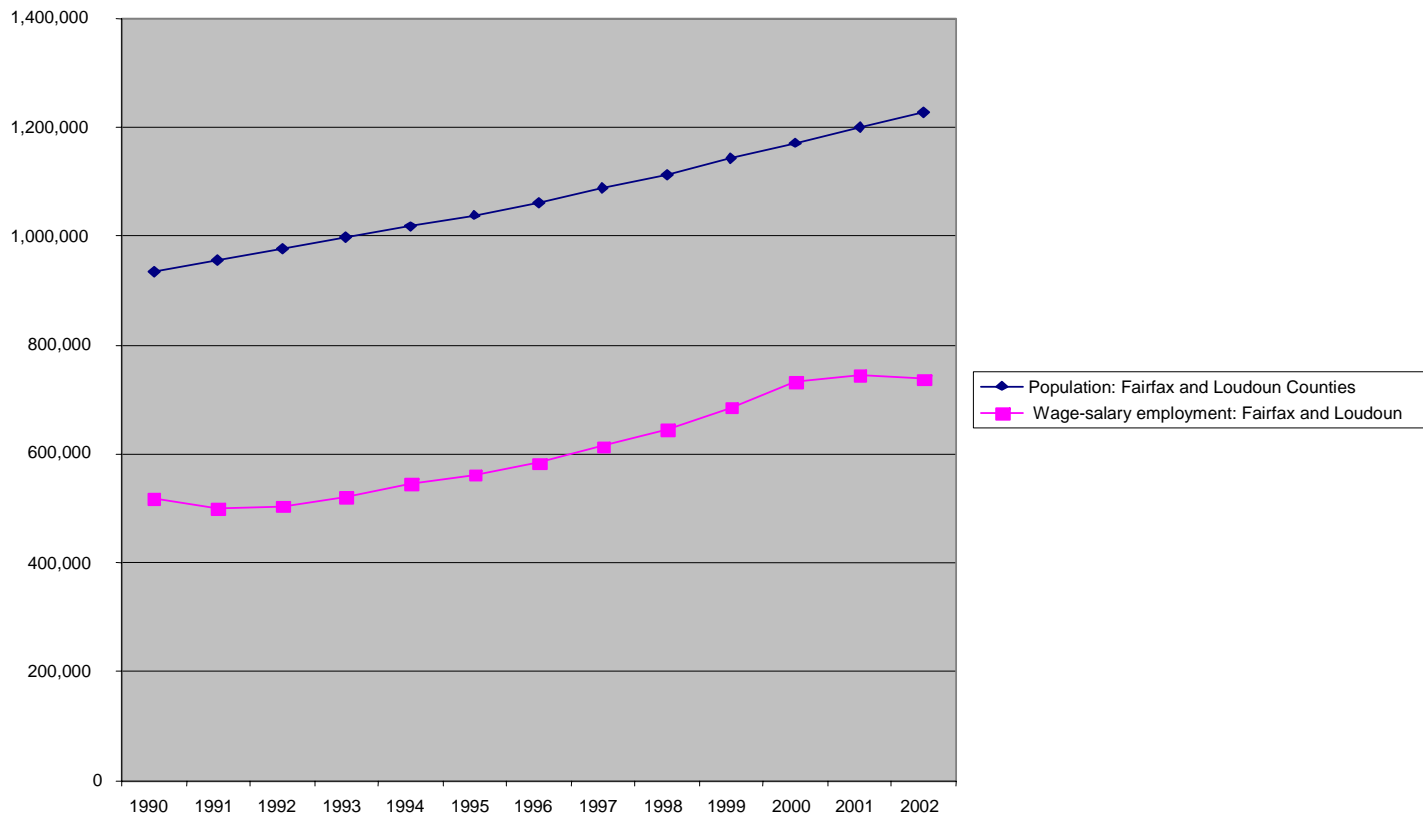
TABLE 13

**AGE CHARACTERISTICS OF THE WASHINGTON PMSA, 2000**  
**Washington Dulles International Airport**  
**Environmental Impact Statement**

Jurisdiction	Under 18	Under 5	5 to 14	15 to 24	25 to 34	35 to 44	45 to 54	55 to 64	65 and over	Total	Median Age (Years)
<b>District of Columbia</b>	114,992	32,536	65,403	89,690	101,762	87,677	75,310	49,783	69,898	572,059	34.6
<b>Maryland</b>											
Calvert County	22,056	5,077	13,201	8,546	9,082	14,553	11,141	6,336	6,627	74,563	35.9
Charles County	34,651	8,603	20,208	14,948	17,396	22,684	16,866	10,439	9,402	120,546	34.6
Frederick County	53,887	14,056	31,161	23,173	27,030	36,810	28,426	15,785	18,836	195,277	35.6
Montgomery County	221,758	60,173	126,505	95,219	126,567	155,708	132,870	78,142	98,157	873,341	36.8
Prince George's County	214,602	57,940	123,828	116,180	126,178	138,319	110,051	67,068	61,951	801,515	33.3
<b>Virginia</b>											
<b>Counties</b>											
Arlington County	31,239	10,397	16,376	24,175	47,675	32,664	25,841	14,563	17,762	189,453	34.0
Clarke County	2,958	660	1,804	1,231	1,359	2,318	1,988	1,446	1,846	12,652	40.6
Culpeper County	8,813	2,186	5,089	4,300	4,637	6,020	4,762	3,204	4,064	34,262	36.5
Fairfax County	246,264	67,781	138,620	112,187	150,257	178,871	157,350	87,865	76,818	969,749	35.9
Fauquier County	14,795	3,526	8,675	6,120	6,365	10,355	8,692	5,617	5,789	55,139	37.8
King George County	4,671	1,272	2,646	2,130	2,317	3,011	2,304	1,513	1,610	16,803	35.1
Loudoun County	50,555	16,461	27,807	15,939	29,920	36,086	22,232	11,616	9,538	169,599	33.6
Prince William County	85,449	24,007	48,043	38,179	45,311	53,512	38,377	19,911	13,473	280,813	31.9
Spotsylvania County	27,108	6,879	15,902	10,953	12,552	16,510	12,846	7,227	7,526	90,395	34.3
Stafford County	29,169	7,172	17,191	12,001	12,853	18,272	12,958	6,525	5,474	92,446	33.1
Warren County	8,083	2,100	4,719	3,650	4,079	5,593	4,453	3,097	3,893	31,584	37.1
<b>Cities</b>											
Alexandria	21,537	7,962	10,675	14,658	32,571	23,186	17,641	9,985	11,605	128,283	34.4
Fairfax	4,416	1,289	2,399	2,696	3,586	3,655	3,049	2,071	2,753	21,498	37.0
Falls Church	2,430	571	1,395	996	1,383	1,849	1,971	950	1,262	10,377	39.7
Fredericksburg	3,428	1,127	1,810	5,086	2,856	2,385	2,138	1,407	2,470	19,279	30.3
Manassas	10,387	3,020	5,829	4,995	6,116	6,464	4,589	2,220	1,902	35,135	31.3
Manassas Park	3,191	1,024	1,716	1,351	2,130	1,994	1,049	584	442	10,290	30.3
<b>West Virginia</b>											
Berkeley County	19,529	5,024	11,169	9,602	11,065	12,701	10,938	6,940	8,466	75,905	35.8
Jefferson County	10,066	2,642	5,661	5,972	5,512	7,082	6,519	4,078	4,724	42,190	36.8
<b>PMSA</b>	<b>1,246,034</b>	<b>343,485</b>	<b>707,832</b>	<b>623,977</b>	<b>790,559</b>	<b>878,279</b>	<b>714,361</b>	<b>418,372</b>	<b>446,288</b>	<b>4,923,153</b>	<b>34.9</b>
<b>Percent</b>	<b>25.3</b>	<b>7.0</b>	<b>14.4</b>	<b>12.7</b>	<b>16.1</b>	<b>17.8</b>	<b>14.5</b>	<b>8.5</b>	<b>9.1</b>	<b>100.0</b>	<b>---</b>

Source: U.S. Census Bureau, Census 2000.

**FIGURE 1**  
**POPULATION AND EMPLOYMENT FOR LOUDOUN AND FAIRFAX COUNTIES, 1990-2002**  
**Washington Dulles International Airport**  
**Environmental Impact Statement**

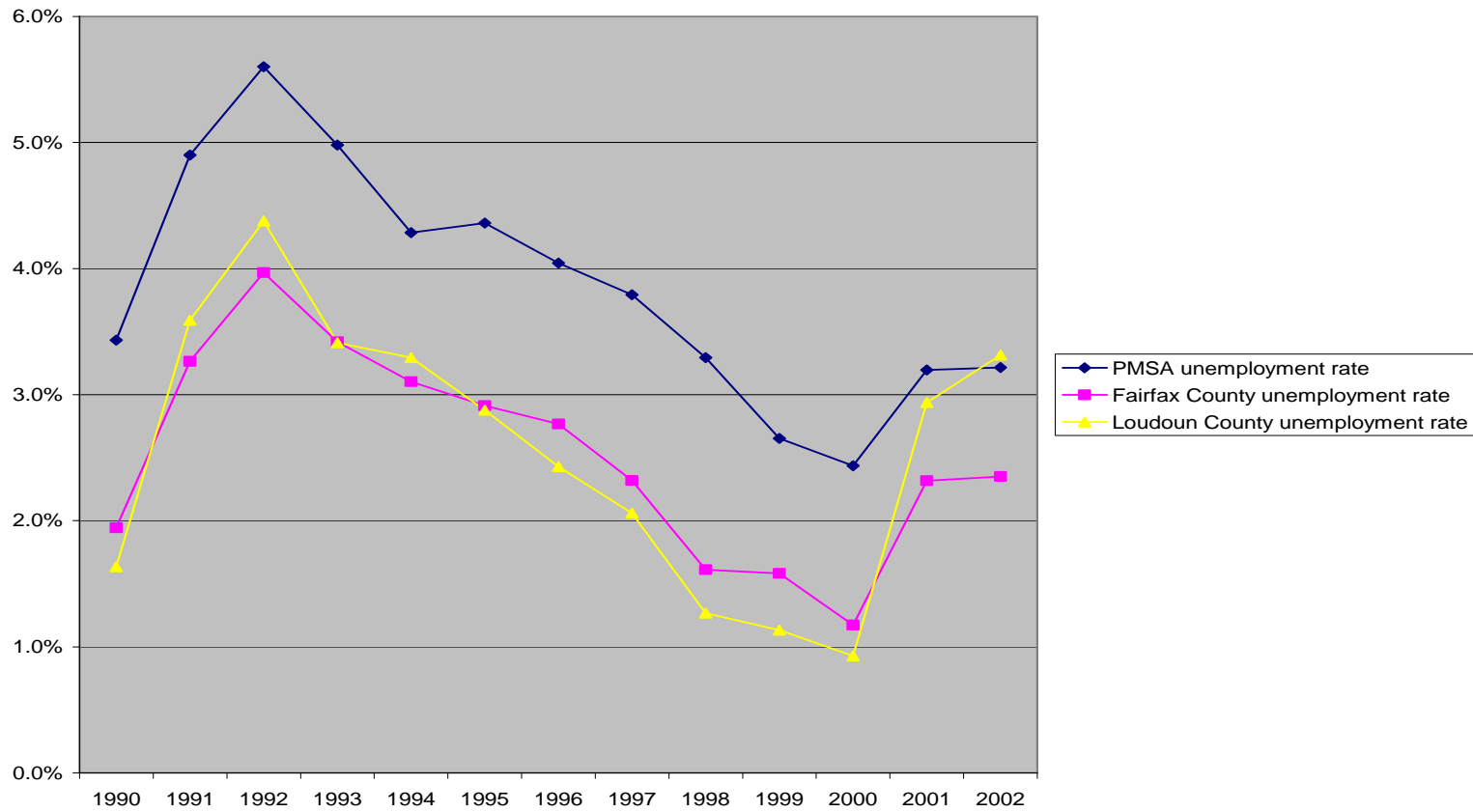


Source: Bureau of Economic Analysis, 2003.  
 U.S. Census, U.S. Census Projections, 2001.  
 The SGM Group, Inc., March 2003.



FIGURE 2

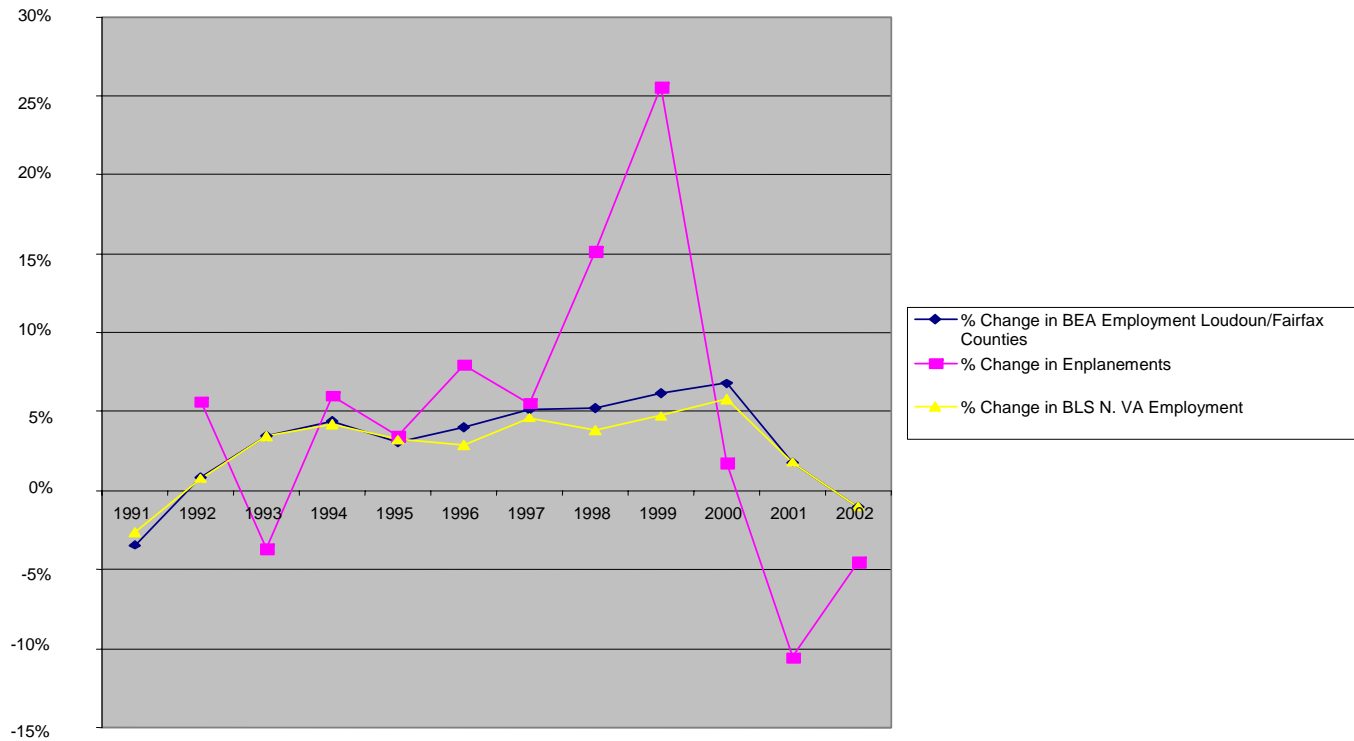
UNEMPLOYMENT RATES FOR THE WASHINGTON PMSA AND FAIRFAX AND LOUDOUN COUNTIES, 1990-2002  
Washington Dulles International Airport  
Environmental Impact Statement



Sources: U.S. Department of Labor, Bureau of Labor Statistics  
The SGM Group, Inc., March 2003.

FIGURE 3

PERCENTAGE CHANGE COMPARISON FOR THE RELATIONSHIP BETWEEN COUNTY AND REGIONAL EMPLOYMENT AND IAD ENPLANEMENTS, 1992 - 2002  
Washington Dulles International Airport  
Environmental Impact Statement



Note: BEA = Bureau of Economic Analysis (U.S. Department of Commerce).  
BLS = Bureau of Labor Statistics (U.S. Department of Labor).

Source: The SGM Group, Inc., March 2003.