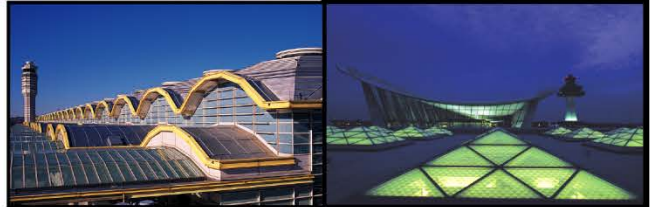


December
2014

Air Traffic Statistics



METROPOLITAN WASHINGTON AIRPORTS AUTHORITY



Air Traffic Summary December 2014

Passenger Activity (in Millions)

		Current Month			Year-to-Date			
		DCA	IAD	System	DCA	IAD	System	
Total	Passengers	1.8	1.7	3.5	20.8	21.6	42.4	
	% Change	7.8%	(1.6%)	2.9%	1.9%	(1.7%)	0.0%	
Commercial	Dom	Passengers	1.7	1.2	2.9	20.4	14.3	34.7
		% Change	8.0%	(0.1%)	4.6%	2.0%	(3.3%)	(0.3%)
	Int'l	Passengers	< 0.1	0.5	0.6	0.4	7.1	7.5
		% Change	(2.2%)	(4.8%)	(4.7%)	(1.9%)	1.6%	1.4%

Note: System totals may not sum due to rounding.

U.S. industry average passenger enplanements as reported by Airlines for America (A4A):

Enplanements	Current Month	Year-to-Date
System	2.0%	2.7%
Domestic	2.1%	2.7%
International	1.3%	2.9%

Ronald Reagan Washington National Airport

- DCA served a record 20.8 million passengers in 2014, the fifth consecutive year of passenger growth.
- Domestic commercial passenger activity increased 8.0% in December 2014 compared to December 2013. Significant activity by carrier follows:

Airline	Comments
American + US Airways	<ul style="list-style-type: none"> • 2.1% decrease from December 2013 in passenger activity due to slot divestitures in June and July 2014 • Increased service to Boston in March 2014; Hartford, Los Angeles, and St. Louis in June 2014; and Cincinnati in December 2014
Southwest + AirTran	<ul style="list-style-type: none"> • 139.3% increase in passenger activity from slots divested by American • New service to Kansas City in March 2014; Chicago Midway, Nashville, and New Orleans in August 2014; Tampa in October 2014; and Akron, Dallas Love, and Indianapolis in November 2014 • Increased service to Houston and St. Louis in November 2014
Virgin America	<ul style="list-style-type: none"> • 214.6% increase in passenger activity with new service to Dallas Love in November 2014
JetBlue	<ul style="list-style-type: none"> • 21.8% increase in passenger activity from slots divested by American • New service to Charleston and Hartford in June 2014; and Jacksonville, West Palm Beach, and Fort Myers in December 2014 • Increased service to Tampa in July 2014

- Transborder passenger traffic decreased 2.2% in December as a result of discontinued service to Montreal on American + US Airways in June 2014.
- The combined American + US Airways operations, including its regional affiliates, had the largest commercial passenger market share with 52.3%, a decrease compared to 58.0% in December 2013.

Washington Dulles International Airport

Domestic Passenger Activity

- Domestic commercial passenger activity declined 0.1% in December 2014. Significant activity by carrier follows:

Airline	Comments
United	<ul style="list-style-type: none">• 6.9% decrease in passenger activity• Discontinued service to 12 domestic destinations, including four now being served by Silver Airways• Reduced service to 22 destinations partially reflecting seasonality• Increased service to Chicago O'Hare, Houston, San Antonio, and St. Thomas
JetBlue	<ul style="list-style-type: none">• 31.3% decrease due to discontinued service to Oakland in July 2014 and Long Beach in September 2014, and reduced service to Boston in November 2014, while continuing to increase service at Reagan National
Frontier	<ul style="list-style-type: none">• Began operations at IAD in September 2014 with service to 16 domestic destinations in December• Monthly activity averaged approximately 81,000 passengers in the fourth quarter

International Passenger Activity

- Dulles served a record 7.1 million international passengers in 2014, which was the 11th consecutive year of international growth.
- December 2014 international commercial passenger traffic decreased 4.8%. Significant activity by carrier follows:

Airline	Comments
United	<ul style="list-style-type: none">• 7.4% decrease in passenger activity• Increased seasonal service to Aruba, Cancun, Guatemala, Montego Bay, Punta Cana, and St. Maarten in March 2014• Discontinued service to San Salvador in April 2014, and temporarily discontinued service to Rome in November 2014 for the winter season• Reduced service to Canadian destinations in November and December 2014
Brussels Airlines	<ul style="list-style-type: none">• Discontinued service for the winter season in October 2014
Air France	<ul style="list-style-type: none">• 32.1% decrease due to aircraft down-gauging
Austrian	<ul style="list-style-type: none">• 33.9% increase due to aircraft up-gauging
Air China	<ul style="list-style-type: none">• New service to Beijing began June 2014

- United Airlines, including its regional affiliates, had the largest commercial passenger market share of 61.9%, a decrease compared to 65.5% in December 2013.

Cargo Activity

- For calendar year 2014, total cargo increased 5.7% on strong international activity from United (13%), All Nippon (18%), and new service by Air China. Domestic cargo fell 4.7% due to reductions on FedEx (-8.6%).
- For the month of December 2014, total cargo increased 7.5% at Dulles from a year earlier. Domestic cargo increased 16.6% due primary to increases on UPS (83.6%) and United (27.3%).
- International cargo increased 2.8% in December due to increases mainly on United (11.0%), Saudi Arabian Airlines (182.1%), Korean Air (83.4%), and new service by Air China, which offset decreases on British Airways (-25.3%), Etihad (-34.9%) and Lufthansa (-21.9%).

Baltimore-Washington International Airport

- Current month commercial passenger activity declined 0.5% from December 2013.
- BWI passenger activity outpaced activity at Dulles by 106.6k commercial passengers (6.2%) and National by 70.9K passengers (4.0%).
- Southwest's passenger market share totaled 72.8%, up from 72.7% in December 2013.
- Cargo activity at BWI increased 3.1% from a year earlier. Activity in BWI's largest cargo carrier, FedEx, declined 8.6%. This decline was offset by increases in UPS (7.1%), Southwest (16.9%), and DHL (29.6%).

Ronald Reagan Washington National Airport

Air Traffic Schedule Activity

December 2014 vs. December 2013

December 2014:	Daily Departures	Airlines*	Unduplicated Destinations
Domestic Passenger service information -			
Mainline	195	9	--
Regional Affiliate	<u>178</u>	<u>10</u>	--
Domestic Total	373	19	79
Transborder/International Passenger service information -			
Mainline	1	1	--
Regional Affiliate	<u>11</u>	<u>4</u>	--
Transborder/International Total	12	5	4

December 2013:	Daily Departures	Airlines*	Unduplicated Destinations
Domestic Passenger service information -			
Mainline	155	9	--
Regional Affiliate	<u>207</u>	<u>11</u>	--
Domestic Total	362	20	87
Transborder/International Passenger service information -			
Mainline	1	1	--
Regional Affiliate	<u>12</u>	<u>4</u>	--
Transborder/International Total	13	5	5

* The following airlines are counted as one airline:
 Southwest and AirTran
 American and US Airways
 Regional carriers flying for multiple mainline carriers

Source: DIIO, December 29, 2014

Washington Dulles International Airport
Air Traffic Schedule Activity
December 2014 vs. December 2013

December 2014:	Daily Departures	Airlines*	Unduplicated Destinations
Domestic			
Passenger service information -			
Mainline	100	9	--
Regional Affiliate	<u>156</u>	<u>12</u>	--
Domestic Total	256	21	88
Transborder/International			
Passenger service information -			
Mainline	47	26	--
Regional Affiliate	<u>9</u>	<u>2</u>	--
Transborder/International Total	56	28	43

December 2013:	Daily Departures	Airlines	Unduplicated Destinations
Domestic			
Passenger service information -			
Mainline	90	6	--
Regional Affiliate	<u>192</u>	<u>14</u>	--
Domestic Total	282	20	84
Transborder/International			
Passenger service information -			
Mainline	48	25	--
Regional Affiliate	<u>10</u>	<u>5</u>	--
Transborder/International Total	58	30	44

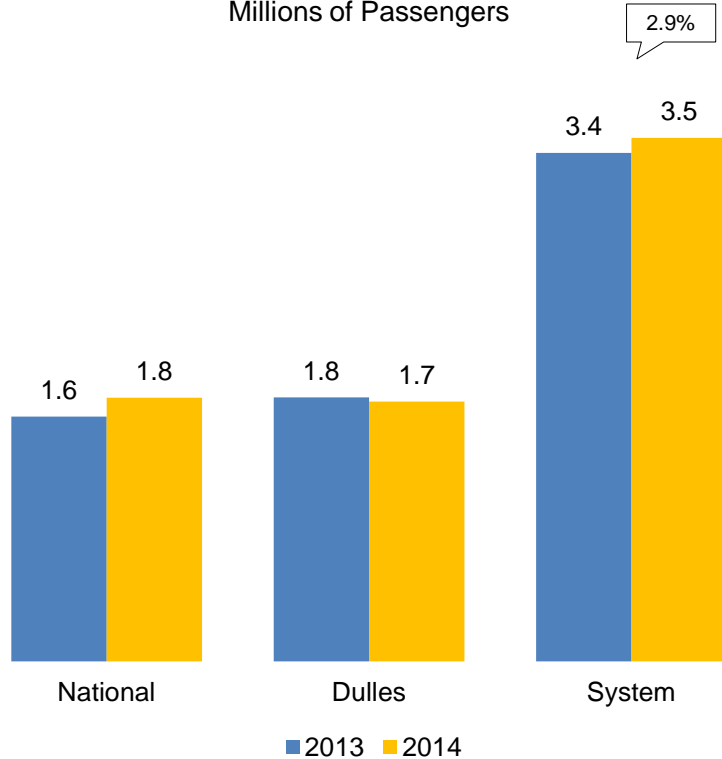
* The following airlines are counted as one airline:
Pacific Wings and Sun Air International
Avianca and TACA
American Airlines and US Airways
Austrian and Tyrolean
Regional carriers flying for multiple mainline carriers

Source: DIIQ, December 29, 2014

Passenger Trends

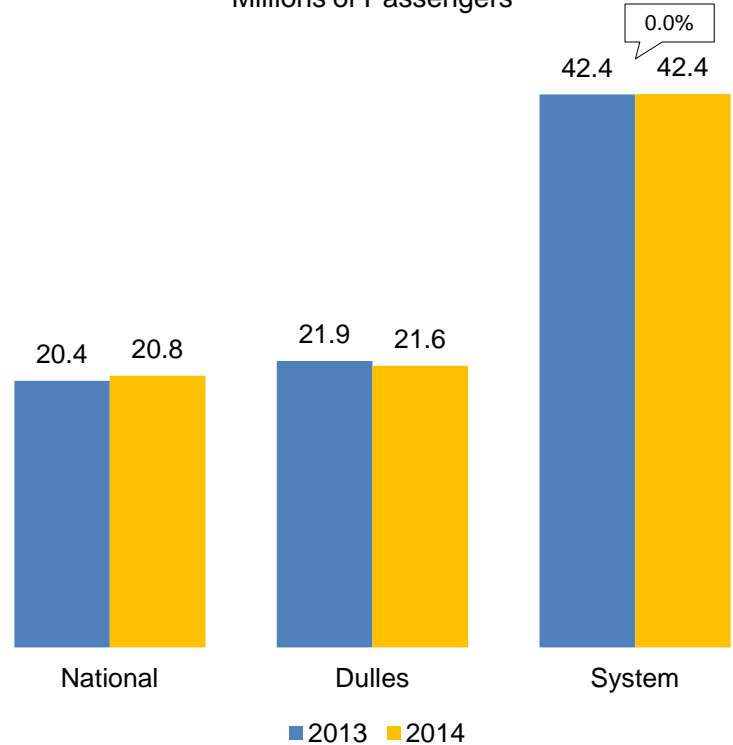
December 2014 Comparison

Millions of Passengers



Last 12-Months Comparison

Millions of Passengers

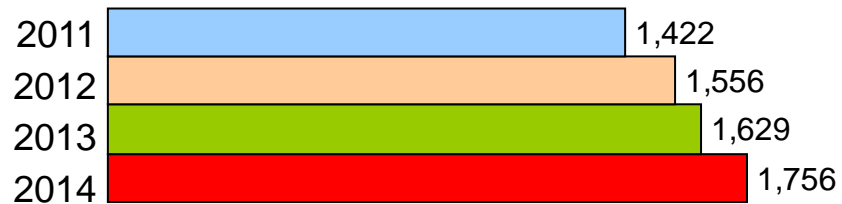


* System totals may not sum due to rounding.

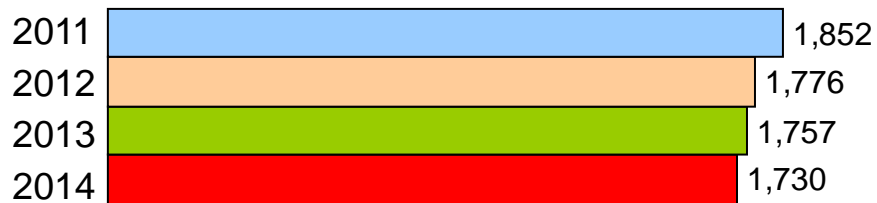
Total Passengers

Four Year Comparison of the Month of December (Thousands)

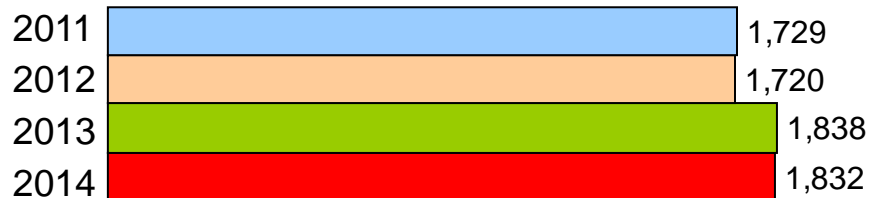
National



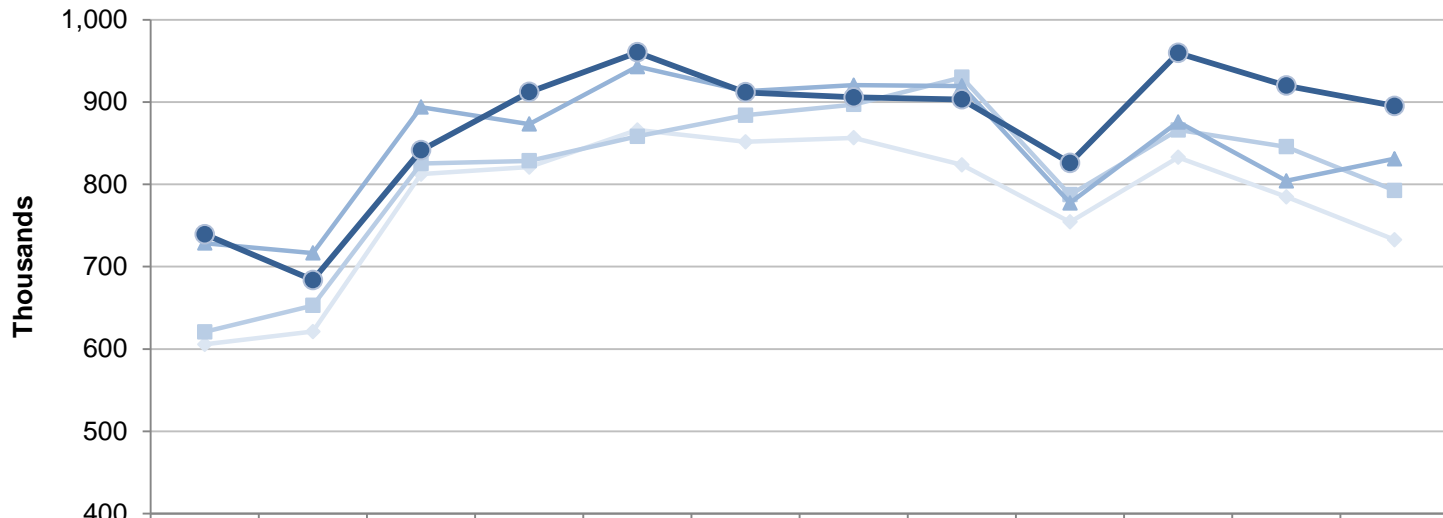
Dulles



BWI

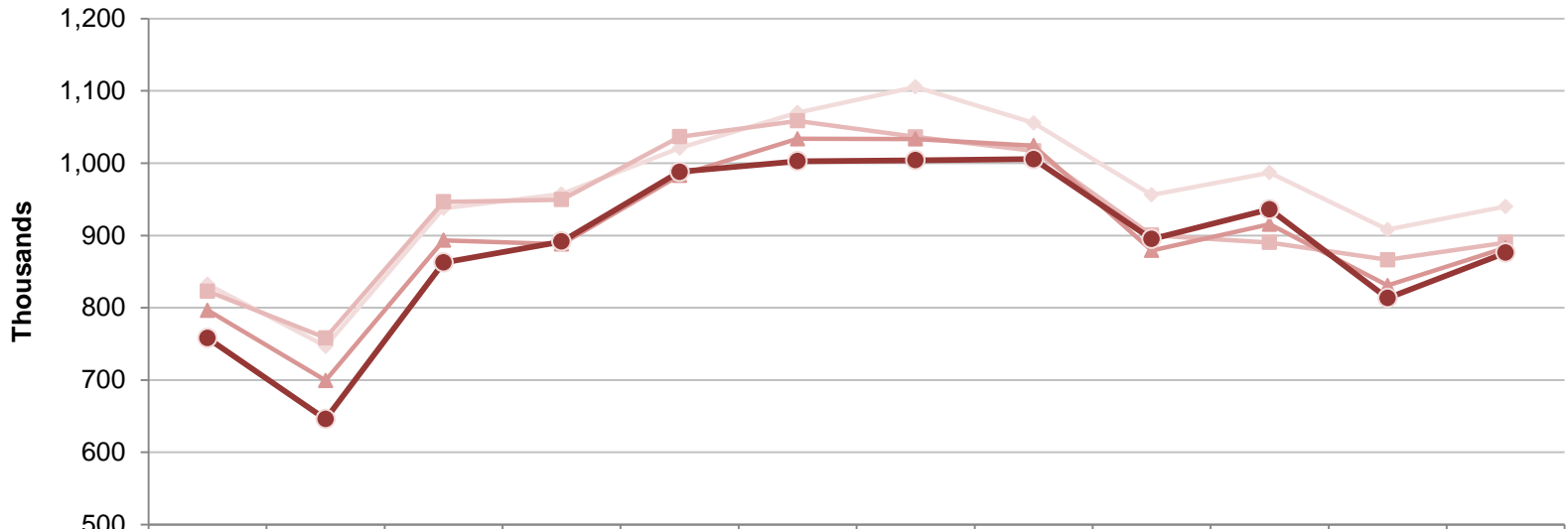


Ronald Reagan Washington National Airport
Total Commercial Passenger Enplanements
Calendar Years 2011 - 2014



	Jan	Feb	Mar	Apr	May	Jun	Jul	Aug	Sep	Oct	Nov	Dec
2011	606	621	812	821	866	852	856	824	754	833	785	733
2012	621	653	825	829	858	884	897	930	787	866	846	793
2013	729	717	894	873	943	913	921	920	777	876	804	831
2014	739	684	841	912	960	912	906	903	826	960	920	895

Dulles International Airport
 Total Commercial Passenger Enplanements
 Calendar Years 2011 - 2014



	Jan	Feb	Mar	Apr	May	Jun	Jul	Aug	Sep	Oct	Nov	Dec
◆ 2011	832	747	938	957	1,021	1,070	1,106	1,056	956	987	908	940
■ 2012	823	758	947	950	1,037	1,059	1,036	1,017	900	890	866	890
▲ 2013	796	699	893	888	983	1,034	1,034	1,024	879	915	831	883
● 2014	758	646	863	892	988	1,003	1,004	1,006	895	936	813	876

**Commercial Passenger Market Share and Percent Change of Top Airlines
in the Washington and Baltimore Region**

December 2014				December 2013			
National	Top Airlines*	Percent Change	Passengers	Market Share	Top Airlines*	Passengers	Market Share
	1. American + US Airways	-2.6%	918,070	52.3%	1. American + US Airways	943,051	58.0%
	2. Delta	-0.4%	224,072	12.8%	2. Delta	225,056	13.8%
	3. Southwest + Airtran	139.3%	221,764	12.6%	3. United	144,240	8.9%
	4. JetBlue	25.7%	141,482	8.1%	4. JetBlue	112,555	6.9%
	5. United	-7.4%	133,536	7.6%	5. Southwest + Airtran	92,683	5.7%
	6. Alaska	3.0%	36,622	2.1%	6. Frontier	38,559	2.4%
	7. Frontier	-30.5%	26,807	1.5%	7. Alaska	35,548	2.2%
	8. Virgin America	214.6%	22,008	1.3%	8. Air Canada	19,202	1.2%
	9. Air Canada	3.9%	19,952	1.1%	9. Sun Country	9,290	0.6%
	10. Sun Country	2.7%	9,542	0.5%	10. Virgin America	6,996	0.4%
Total Commercial Passengers	7.8%	<u>1,753,855</u>	100.0%	Total Commercial Passengers	<u>1,627,180</u>	100.0%	
Dulles	Top Airlines*	Percent Change	Passengers	Market Share	Top Airlines*	Passengers	Market Share
	1. United	-7.0%	1,063,175	61.9%	1. United	1,143,565	65.5%
	2. American + US Airways	-7.3%	83,942	4.9%	2. American + US Airways	90,590	5.2%
	3. Frontier	N/A	78,394	4.6%	3. Delta	68,081	3.9%
	4. Delta	-2.2%	66,550	3.9%	4. Southwest	50,347	2.9%
	5. Southwest	-8.8%	45,911	2.7%	5. JetBlue	36,497	2.1%
	6. Virgin America	3.5%	33,305	1.9%	6. Virgin America	32,167	1.8%
	7. British Airways	6.5%	32,174	1.9%	7. British Airways	30,198	1.7%
	8. TACA + Avianca	4.5%	30,879	1.8%	8. TACA + Avianca	29,541	1.7%
	9. JetBlue	-31.3%	25,079	1.5%	9. Air France	24,795	1.4%
	10. Lufthansa	-18.7%	20,033	1.2%	10. Lufthansa	24,650	1.4%
11. All Other Airlines	10.6%	<u>238,776</u>	13.9%	11. All Other Airlines	<u>215,803</u>	12.4%	
Total Commercial Passengers	-1.6%	<u>1,718,218</u>	100.0%	Total Commercial Passengers	<u>1,746,234</u>	100.0%	
Baltimore	Top Airlines*	Percent Change	Passengers	Market Share	Top Airlines*	Passengers	Market Share
	1. Southwest + Airtran	-0.3%	1,328,712	72.8%	1. Southwest + Airtran	1,332,876	72.7%
	2. American + US Airways	1.1%	173,932	9.5%	2. American + US Airways	171,981	9.4%
	3. Delta	-4.3%	149,211	8.2%	3. Delta	155,939	8.5%
	4. United + Continental	-9.9%	78,816	4.3%	4. United + Continental	87,496	4.8%
	5. Spirit	15.9%	43,441	2.4%	5. Spirit	37,497	2.0%
	6. JetBlue	-10.0%	17,381	1.0%	6. JetBlue	19,315	1.1%
	7. Alaska		9,940	0.5%	7. British Airways	9,497	0.5%
	8. All Other Airlines	21.6%	<u>23,366</u>	1.3%	8. All Other Airlines	<u>19,209</u>	1.0%
Total Commercial Passengers	-0.5%	<u>1,824,799</u>	100.0%	Total Commercial Passengers	<u>1,833,810</u>	100.0%	

* Includes affiliated regional carriers

Commercial Passenger Market Share Summary

Total Passengers	Dec 2014	Dec 2013	Change
National	33.1%	31.2%	1.9%
Dulles	32.4%	33.5%	-1.1%
Baltimore	34.5%	35.2%	-0.8%
Domestic Passengers	Dec 2014	Dec 2013	Change
National	37.0%	35.1%	1.9%
Dulles	25.4%	26.0%	-0.7%
Baltimore	37.6%	38.9%	-1.2%
International Passengers	Dec 2014	Dec 2013	Change
National	4.7%	4.6%	0.1%
Dulles	83.9%	85.0%	-1.1%
Baltimore	11.4%	10.4%	1.0%

Totals may not sum due to rounding.

Metropolitan Washington Airports Authority
Ronald Reagan Washington National Airport
Monthly Air Traffic Summary Report
December 2014

Description	Enplaned	Deplaned	Total	Year Ago	% Change
Aircraft Operations					
Commercial:					
Air Carrier:					
Domestic			12,013	9,388	28.0
International			62	24	158.3
Transborder			0	0	0.0
Total - Air Carrier			12,075	9,412	28.3
Regional:					
Domestic			10,869	12,180	- 10.8
International			0	13	- 100.0
Transborder			611	686	- 10.9
Total - Regional			11,480	12,879	- 10.9
Commercial:					
Domestic			22,882	21,568	6.1
Transborder			673	723	- 6.9
Total - Commercial			23,555	22,291	5.7
Non-Commercial:					
General Aviation			254	537	- 52.7
Military			229	68	236.8
Total - Non-Commercial			483	605	- 20.2
Grand Total - Aircraft Operations			24,038	22,896	5.0
Passengers					
Commercial:					
Air Carrier Domestic:					
Scheduled	633,927	599,412	1,233,339	1,048,658	17.6
Chartered	0	0	0	0	0.0
Total - Domestic Air Carrier	633,927	599,412	1,233,339	1,048,658	17.6
Air Carrier International:					
Scheduled	2,417	2,070	4,487	2,400	87.0
Chartered	0	0	0	0	0.0
Total - International Air Carrier	2,417	2,070	4,487	2,400	87.0
Air Carrier Transborder:					
Scheduled	0	0	0	0	0.0
Chartered	0	0	0	0	0.0
Total - Transborder Air Carrier	0	0	0	0	0.0
Total - Air Carrier	636,344	601,482	1,237,826	1,051,058	17.8
Regional:					
Domestic	246,431	244,063	490,494	547,839	- 10.5
International	0	0	0	722	- 100.0
Transborder	12,367	13,168	25,535	27,561	- 7.4
Total - Regional	258,798	257,231	516,029	576,122	- 10.4
Commercial:					
Domestic	880,358	843,475	1,723,833	1,596,497	8.0
Transborder	14,784	15,238	30,022	30,683	- 2.2
Total - Commercial	895,142	858,713	1,753,855	1,627,180	7.8
Non-Commercial:					
General Aviation	872	850	1,722	1,438	19.7
Military	264	290	554	375	47.7
Total - Non-Commercial	1,136	1,140	2,276	1,813	25.5
Grand Total - Passengers	896,278	859,853	1,756,131	1,628,993	7.8

Metropolitan Washington Airports Authority
Ronald Reagan Washington National Airport
Monthly Air Traffic Summary Report
December 2014

Description	Enplaned	Deplaned	Total	Year Ago	% Change
Cargo - Tonnes					
Mail:					
Domestic	21	0	21	22	- 4.9
International	0	0	0	0	100.0
Transborder	0	0	0	0	0.0
Total - Mail:	21	0	21	22	- 4.9
Freight + Express:					
Domestic	98	54	152	135	12.7
International	0	0	0	0	0.0
Transborder	0	0	0	0	- 100.0
Total - Freight + Express:	98	54	152	135	12.4
Mail Plus Freight + Express:					
Domestic	119	54	173	157	10.2
Transborder	0	0	0	0	- 98.6
Grand Total - Cargo	119	54	173	157	10.0

NOTE: Figures may not sum to total due to rounding.

Metropolitan Washington Airports Authority
Ronald Reagan Washington National Airport
Monthly Air Traffic Summary Report
January 2014 - December 2014

Description	Enplaned	Deplaned	Total	Year Ago	% Change
Aircraft Operations					
Commercial:					
Air Carrier:					
Domestic			126,551	123,200	2.7
International			694	334	107.8
Transborder			0	1,108	- 100.0
Total - Air Carrier			127,245	124,642	2.1
Regional:					
Domestic			141,231	152,198	- 7.2
International			162	406	- 60.1
Transborder			7,949	7,992	- 0.5
Total - Regional			149,342	160,596	- 7.0
Commercial:					
Domestic			267,782	275,398	- 2.8
Transborder			8,805	9,840	- 10.5
Total - Commercial			276,587	285,238	- 3.0
Non-Commercial:					
General Aviation			3,740	5,057	- 26.0
Military			2,847	2,353	21.0
Total - Non-Commercial			6,587	7,410	- 11.1
Grand Total - Aircraft Operations			283,174	292,648	- 3.2
Passengers					
Commercial:					
Air Carrier Domestic:					
Scheduled	7,003,429	6,855,751	13,859,180	13,430,962	3.2
Chartered	0	0	0	0	0.0
Total - Domestic Air Carrier	7,003,429	6,855,751	13,859,180	13,430,962	3.2
Air Carrier International:					
Scheduled	28,867	27,967	56,834	31,179	82.3
Chartered	0	0	0	0	0.0
Total - International Air Carrier	28,867	27,967	56,834	31,179	82.3
Air Carrier Transborder:					
Scheduled	0	0	0	51,788	- 100.0
Chartered	0	0	0	0	0.0
Total - Transborder Air Carrier	0	0	0	51,788	- 100.0
Total - Air Carrier	7,032,296	6,883,718	13,916,014	13,513,929	3.0
Regional:					
Domestic	3,255,203	3,275,075	6,530,278	6,558,939	- 0.4
International	4,877	4,766	9,643	25,043	- 61.5
Transborder	165,977	162,472	328,449	294,760	11.4
Total - Regional	3,426,057	3,442,313	6,868,370	6,878,742	- 0.2
Commercial:					
Domestic	10,258,632	10,130,826	20,389,458	19,989,901	2.0
Transborder	199,721	195,205	394,926	402,770	- 1.9
Total - Commercial	10,458,353	10,326,031	20,784,384	20,392,671	1.9
Non-Commercial:					
General Aviation	9,555	9,336	18,891	14,950	26.4
Military	3,572	3,540	7,112	7,464	- 4.7
Total - Non-Commercial	13,127	12,876	26,003	22,414	16.0
Grand Total - Passengers	10,471,480	10,338,907	20,810,387	20,415,085	1.9

Metropolitan Washington Airports Authority
Ronald Reagan Washington National Airport
Monthly Air Traffic Summary Report
January 2014 - December 2014

Description	Enplaned	Deplaned	Total	Year Ago	% Change
Cargo - Tonnes					
Mail:					
Domestic	309	30	338	56	506.3
International	0	0	0	0	100.0
Transborder	0	0	0	0	0.0
Total - Mail:	309	30	338	56	506.3
Freight + Express:					
Domestic	1,047	735	1,782	1,845	- 3.4
International	0	0	0	0	- 100.0
Transborder	1	0	1	2	- 47.6
Total - Freight + Express:	1,048	735	1,783	1,847	- 3.5
Mail Plus Freight + Express:					
Domestic	1,356	764	2,120	1,901	11.6
Transborder	1	0	1	2	- 50.4
Grand Total - Cargo	1,356	765	2,121	1,902	11.5

NOTE: Figures may not sum to total due to rounding.

Metropolitan Washington Airports Authority
Washington Dulles International Airport
Monthly Air Traffic Summary Report
December 2014

Description	Enplaned	Deplaned	Total	Year Ago	% Change
Aircraft Operations					
Commercial:					
Air Carrier:					
Domestic			6,662	5,920	12.5
International			2,800	2,807	-
Transborder			0	1	- 100.0
Total - Air Carrier			9,462	8,728	8.4
Regional:					
Domestic			9,781	11,237	-
International			0	12	- 100.0
Transborder			423	755	-
Total - Regional			10,204	12,004	- 15.0
Commercial:					
Domestic			16,443	17,157	-
International			3,223	3,575	-
Total - Commercial			19,666	20,732	- 5.1
Non-Commercial:					
General Aviation			2,841	3,121	-
Military			48	31	54.8
Total - Non-Commercial			2,889	3,152	- 8.3
Grand Total - Aircraft Operations			22,555	23,884	- 5.6
Passengers					
Commercial:					
Air Carrier Domestic:					
Scheduled	369,888	363,475	733,363	722,215	1.5
Chartered	240	240	480	539	-
Total - Domestic Air Carrier	370,128	363,715	733,843	722,754	1.5
Air Carrier International:					
Scheduled	276,250	242,790	519,040	532,005	-
Chartered	483	547	1,030	957	7.6
Total - International Air Carrier	276,733	243,337	520,070	532,962	- 2.4
Air Carrier Transborder:					
Scheduled	0	0	0	0	0.0
Chartered	0	0	0	0	0.0
Total - Transborder Air Carrier	0	0	0	0	0.0
Total - Air Carrier	646,861	607,052	1,253,913	1,255,716	- 0.1
Regional:					
Domestic	221,544	225,312	446,856	458,859	-
International	0	0	0	697	- 100.0
Transborder	7,906	9,543	17,449	30,962	-
Total - Regional	229,450	234,855	464,305	490,518	- 5.3
Commercial:					
Domestic	591,672	589,027	1,180,699	1,181,613	-
International	284,639	252,880	537,519	564,621	-
Total - Commercial	876,311	841,907	1,718,218	1,746,234	- 1.6
Non-Commercial:					
General Aviation	5,929	5,557	11,486	11,082	3.6
Military	0	0	0	20	- 100.0
Total - Non-Commercial	5,929	5,557	11,486	11,102	3.5
Grand Total - Passengers	882,240	847,464	1,729,704	1,757,336	- 1.6

Metropolitan Washington Airports Authority
Washington Dulles International Airport
Monthly Air Traffic Summary Report
December 2014

Description	Enplaned	Deplaned	Total	Year Ago	% Change
Cargo - Tonnes					
Mail:					
Domestic	320	463	783	754	3.8
International	263	187	450	1,343	- 66.5
Total - Mail:	583	649	1,232	2,097	- 41.2
Freight + Express:					
Domestic	4,069	3,750	7,819	6,623	18.1
International	4,971	9,381	14,352	13,049	10.0
Total - Freight + Express:	9,039	13,131	22,171	19,672	12.7
Mail Plus Freight + Express:					
Domestic	4,389	4,213	8,602	7,377	16.6
International	5,234	9,568	14,801	14,392	2.8
Grand Total - Cargo	9,622	13,781	23,403	21,769	7.5

NOTE: Figures may not sum to total due to rounding.

Metropolitan Washington Airports Authority
Washington Dulles International Airport
Monthly Air Traffic Summary Report
January 2014 - December 2014

Description	Enplaned	Deplaned	Total	Year Ago	% Change
Aircraft Operations					
Commercial:					
Air Carrier:					
Domestic			71,478	73,977	- 3.4
International			35,925	35,828	0.3
Transborder			0	13	- 100.0
Total - Air Carrier			107,403	109,818	- 2.2
Regional:					
Domestic			134,045	145,123	- 7.6
International			360	103	249.5
Transborder			7,993	10,555	- 24.3
Total - Regional			142,398	155,781	- 8.6
Commercial:					
Domestic			205,523	219,100	- 6.2
International			44,278	46,499	- 4.8
Total - Commercial			249,801	265,599	- 5.9
Non-Commercial:					
General Aviation			38,965	41,218	- 5.5
Military			540	984	- 45.1
Total - Non-Commercial			39,505	42,202	- 6.4
Grand Total - Aircraft Operations			289,306	307,801	- 6.0
Passengers					
Commercial:					
Air Carrier Domestic:					
Scheduled	4,307,266	4,372,716	8,679,982	8,906,099	- 2.5
Chartered	6,738	6,628	13,366	18,669	- 28.4
Total - Domestic Air Carrier	4,314,004	4,379,344	8,693,348	8,924,768	- 2.6
Air Carrier International:					
Scheduled	3,335,738	3,363,202	6,698,940	6,523,986	2.7
Chartered	5,325	5,318	10,643	11,681	- 8.9
Total - International Air Carrier	3,341,063	3,368,520	6,709,583	6,535,667	2.7
Air Carrier Transborder:					
Scheduled	0	0	0	0	0.0
Chartered	0	0	0	662	- 100.0
Total - Transborder Air Carrier	0	0	0	662	- 100.0
Total - Air Carrier	7,655,067	7,747,864	15,402,931	15,461,097	- 0.4
Regional:					
Domestic	2,838,334	2,789,517	5,627,851	5,887,308	- 4.4
International	13,684	14,102	27,786	4,776	481.8
Transborder	172,289	189,528	361,817	443,145	- 18.4
Total - Regional	3,024,307	2,993,147	6,017,454	6,335,229	- 5.0
Commercial:					
Domestic	7,152,338	7,168,861	14,321,199	14,812,076	- 3.3
International	3,527,036	3,572,150	7,099,186	6,984,250	1.6
Total - Commercial	10,679,374	10,741,011	21,420,385	21,796,326	- 1.7
Non-Commercial:					
General Aviation	77,373	73,884	151,257	149,586	1.1
Military	287	304	591	1,153	- 48.7
Total - Non-Commercial	77,660	74,188	151,848	150,739	0.7
Grand Total - Passengers	10,757,034	10,815,199	21,572,233	21,947,065	- 1.7

Metropolitan Washington Airports Authority
Washington Dulles International Airport
Monthly Air Traffic Summary Report
January 2014 - December 2014

Description	Enplaned	Deplaned	Total	Year Ago	% Change
Cargo - Tonnes					
Mail:					
Domestic	2,595	4,567	7,162	5,931	20.8
International	3,070	1,163	4,233	9,715	- 56.4
Total - Mail:	5,665	5,730	11,396	15,646	- 27.2
Freight + Express:					
Domestic	44,603	37,368	81,971	87,587	- 6.4
International	65,445	108,942	174,387	150,128	16.2
Total - Freight + Express:	110,048	146,309	256,358	237,715	7.8
Mail Plus Freight + Express:					
Domestic	47,199	41,934	89,133	93,518	- 4.7
International	68,515	110,105	178,620	159,843	11.7
Grand Total - Cargo	115,714	152,040	267,753	253,361	5.7

NOTE: Figures may not sum to total due to rounding.