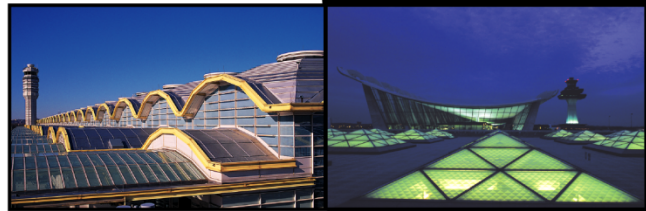


September
2013

air traffic statistics



Prepared by the Office of Finance

Department of Internal Controls, Compliance and
Financial Strategy



METROPOLITAN WASHINGTON AIRPORTS AUTHORITY

Air Traffic Summary September 2013

		Passenger Activity (in Millions)									
		Current Month			Year-to-Date			Last 12 Months			
		DCA	IAD	System	DCA	IAD	System	DCA	IAD	System	
Commercial	Total	Passengers	1.6	1.8	3.4	15.4	16.7	32.1	20.4	22.0	42.4
		% Change	(1.4%)	(1.9%)	(1.7%)	5.3%	(3.3%)	0.6%	5.6%	(4.0%)	0.4%
	Dom	Passengers	1.6	1.2	2.7	15.1	11.2	26.3	20.0	14.9	34.9
		% Change	(1.1%)	(3.9%)	(2.5%)	5.1%	(6.8%)	(0.3%)	5.2%	(7.4%)	(0.6%)
Int'l	Passengers	< 0.1	0.6	0.6	0.3	5.4	5.7	0.4	6.9	7.3	
	% Change	(16.5%)	2.0%	1.0%	17.3%	4.8%	5.5%	25.7%	4.1%	5.2%	

Note: System totals may not sum due to rounding.

U.S. industry average passenger enplanements as reported by Airlines for America (A4A):

Enplanements	Current Month	Year-to-Date
System	0.9%	1.2%
Domestic	0.8%	0.9%
International	1.6%	3.1%

Ronald Reagan Washington National Airport

- Domestic activity decreased 1.1% from September 2012. This decline in traffic was primarily due to reductions in service by Delta and Frontier Airlines. Significant activity by carrier follows:

Airline	Comments
US Airways	<ul style="list-style-type: none"> 1.2% passenger growth 13 additional daily departures New service to Wilmington (NC) and Myrtle Beach in February, and Ft. Myers effective November 2012
Delta	<ul style="list-style-type: none"> 8.2% decline in passenger activity Reduced capacity to Atlanta and Memphis
American	<ul style="list-style-type: none"> 3.6% decline in passenger activity Reduced service to Dallas/Ft. Worth in December 2012
United	<ul style="list-style-type: none"> 3.0% decline in passenger activity Capacity reductions to Houston Intercontinental were offset by increases to Chicago and Newark
Frontier	<ul style="list-style-type: none"> Discontinued service to Milwaukee in November 2012 Reduced service to Kansas City and Omaha in November 2012
Spirit	<ul style="list-style-type: none"> Discontinued operations in October 2012

- Transborder passenger traffic declined 16.5% and was primarily a result of US Airways discontinuing service to Ottawa in February 2013. Both US Airways and Air Canada reduced service to Montreal and Toronto. US Airways also discontinued service to Halifax in September.
- US Airways, including its regional affiliates, had the largest commercial passenger market share with 44.9%, an increase from 44.0% in September 2012.

Washington Dulles International Airport

Passenger Activity

- Passenger traffic decreased 1.9% from September 2012 as a result of a 3.9% decline in domestic commercial activity that was only partially offset by a 2.0% increase in international traffic. Significant domestic activity by carrier follows:

Airline	Comments
United	<ul style="list-style-type: none">• 2.2% decline in passenger activity• Discontinued service to Allentown/Bethlehem in March 2013, Manchester and Pensacola in April 2013, and Clarksburg in July 2013• New service to Beckley in October 2012, Ft. Lauderdale in November 2012, Fayetteville in March 2013, and Grand Rapids in May 2013
Delta	<ul style="list-style-type: none">• Discontinued service to Cincinnati in March 2013
Virgin America	<ul style="list-style-type: none">• Reduced service to San Francisco from 4 daily departures to 2 and Los Angeles from 3 daily departures to 2

- International/Transborder passenger traffic growth of 2.0% was primarily driven by new and expanded service. Significant activity by carrier follows:

Airline	Comments
United	<ul style="list-style-type: none">• 1.4% decline in activity• New service to San Salvador in January 2013• Reduced service to Frankfurt from 21 weekly departures to 14 in November 2012 and reduced service to Kuwait from 7 weekly departures to 5 in September 2013
Lufthansa	<ul style="list-style-type: none">• 13.8% increase in activity due to 5 additional departures
KLM	<ul style="list-style-type: none">• Reduced service to Amsterdam from 10 weekly departures to 7
Emirates	<ul style="list-style-type: none">• New service to Dubai began September 12, 2012; September 2013 reflects a full month of service
COPA	<ul style="list-style-type: none">• Increased service to Panama City from 7 weekly departures to 14 in December 2012
Etihad	<ul style="list-style-type: none">• New service to Abu Dhabi began in March 2013
Brussels	<ul style="list-style-type: none">• New service to Brussels began in June 2013
Aer Lingus	<ul style="list-style-type: none">• Discontinued service to Madrid in November 2012

- United Airlines, including its regional affiliates, had the largest commercial passenger market share of 66.6%, which was the same in September 2012.

Cargo Activity

- Total cargo (mail and freight) activity decreased to 20.2K metric tonnes (8.0% decline compared to September 2012). Domestic cargo declined 18.7%. Cargo activity for Dulles's largest domestic cargo carrier, FedEx, declined 13.9% due to reductions in inbound freight (FedEx activity at BWI declined 13.6%). Moreover, domestic cargo on United declined 40.4% as United has shifted to narrow-body aircraft.
- International cargo decreased 0.9% as declines in international cargo activity by United outpaced increases in new carriers, such as Etihad, Emirates, and Brussels Airlines.

Baltimore-Washington International Airport

- Current month commercial passenger activity vs. September 2012 decreased 1.5%.
- BWI commercial passenger traffic of 1.8M fell short of Dulles by 22.4K passengers (1.3%), but surpassed National by 172.0K passengers (10.9%). International passenger volume increased 8.5% to 63.0K.
- Southwest had the largest passenger market share with 69.1%; activity decreased 2.6% compared to September 2012.
- Cargo activity totaled 8.5K metric tonnes, a 9.5% decline from a year earlier, and represented 29.5% of total cargo activity for the region's airports.

Ronald Reagan Washington National Airport

SH&E Air Traffic Schedule Activity
September 2013 vs. September 2012

September 2013:	Departures	Airlines*	Unduplicated Cities
Domestic			
Passenger service (daily) information -			
Air Carrier	183	10	--
Regional	<u>236</u>	<u>13</u>	--
Domestic Total	419	23	85
Transborder/International			
Passenger service (weekly) information -			
Air Carrier	28	1	--
Regional	<u>59</u>	<u>2</u>	--
Transborder/International Total	87	3	3

September 2012:	Departures	Airlines*	Unduplicated Cities
Domestic			
Passenger service (daily) information -			
Air Carrier	183	10	--
Regional	<u>224</u>	<u>12</u>	--
Domestic Total	407	22	83
Transborder/International			
Passenger service (weekly) information -			
Air Carrier	27	1	--
Regional	<u>105</u>	<u>2</u>	--
Transborder/International Total	132	3	4

* The following airlines are counted as one airline:
Southwest and AirTran

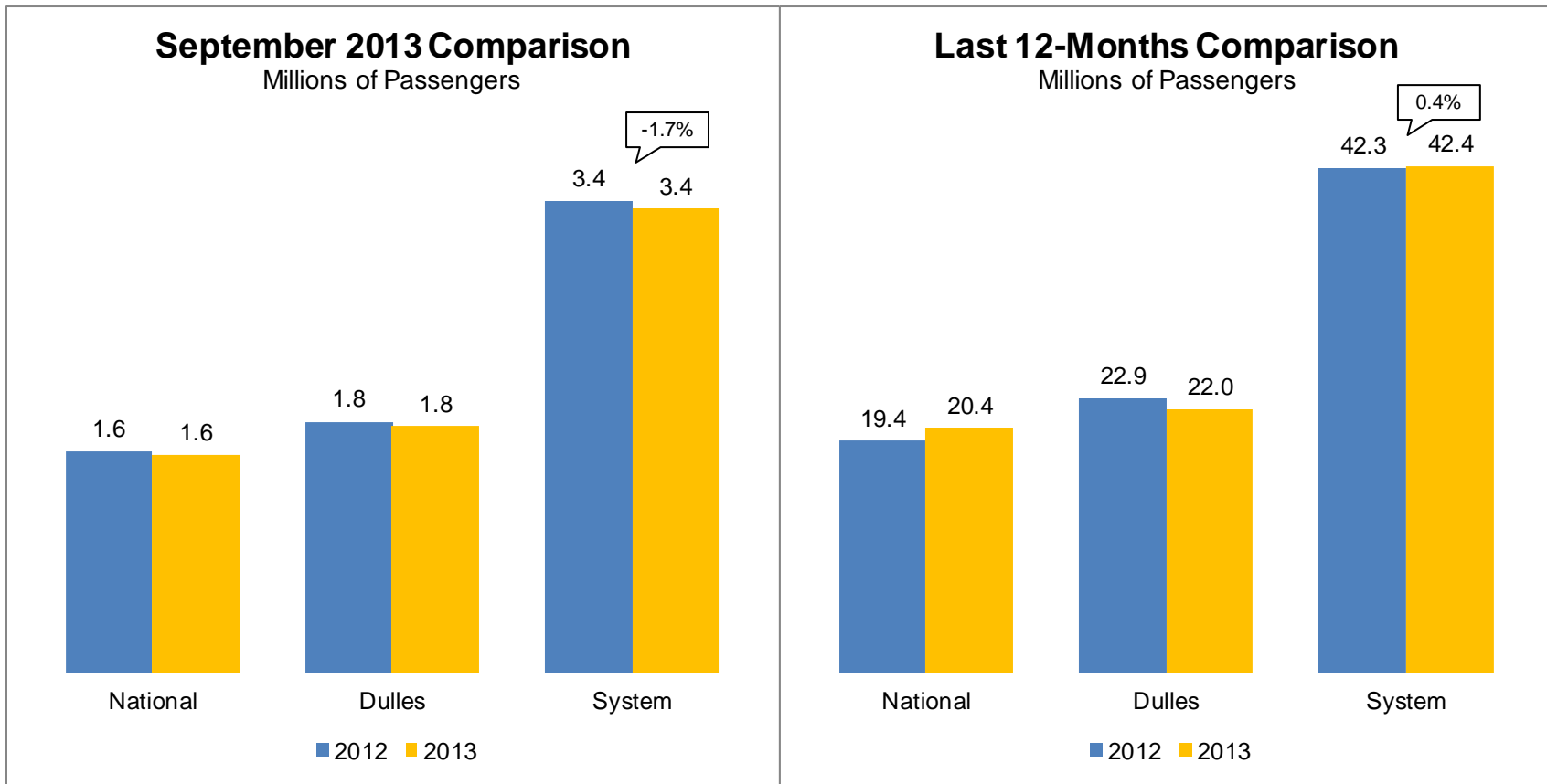
Washington Dulles International Airport
 SH&E Air Traffic Schedule Activity
 September 2013 vs. September 2012

September 2013:	Departures	Airlines*	Unduplicated Cities
Domestic			
Passenger service (daily) information -			
Air Carrier	118	8	--
Regional	<u>189</u>	<u>16</u>	--
Domestic Total	307	24	81
Transborder/International			
Passenger service (weekly) information -			
Air Carrier	367	25	--
Regional	<u>96</u>	<u>4</u>	--
Transborder/International Total	463	29	37

September 2012:	Departures	Airlines	Unduplicated Cities
Domestic			
Passenger service (daily) information -			
Air Carrier	110	7	--
Regional	<u>200</u>	<u>14</u>	--
Domestic Total	310	21	79
Transborder/International			
Passenger service (weekly) information -			
Air Carrier	364	24	--
Regional	<u>96</u>	<u>4</u>	--
Transborder/International Total	460	28	37

* The following airlines are counted as one airline:
 Pacific Wings and Sun Air International

Passenger Trends

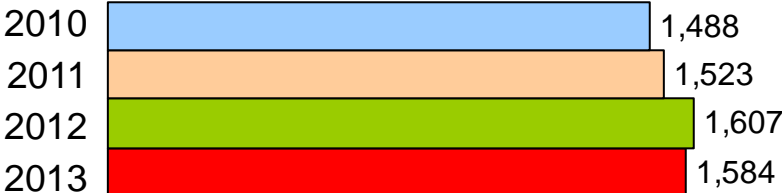


* System totals may not sum due to rounding.

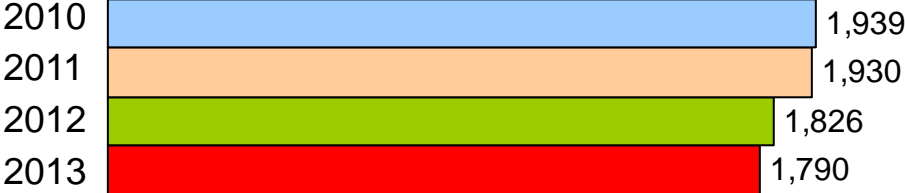
Total Passengers

Four Year Comparison of the Month of September (Thousands)

National



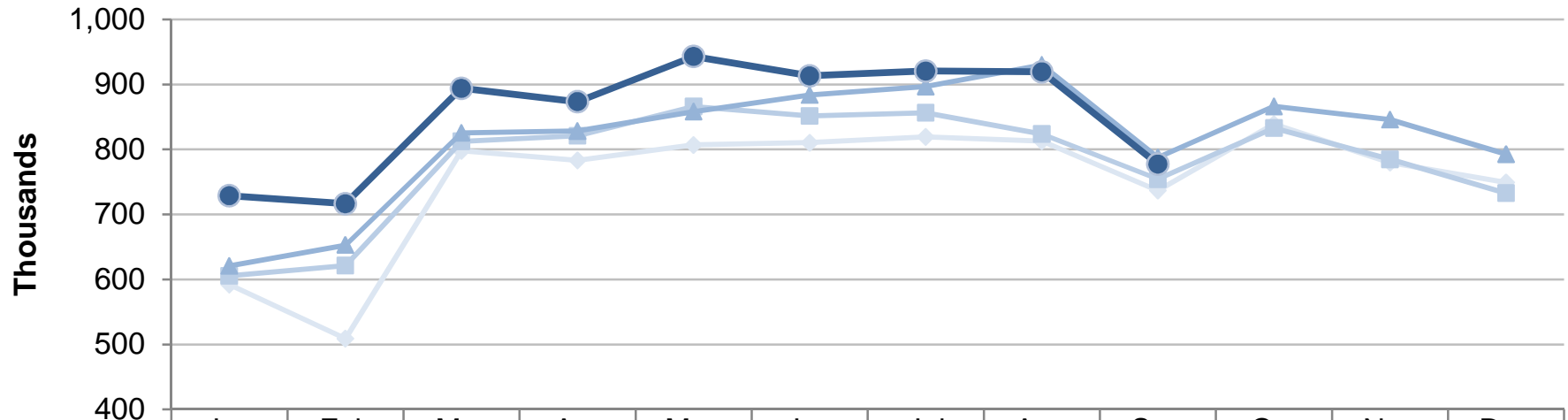
Dulles



BWI

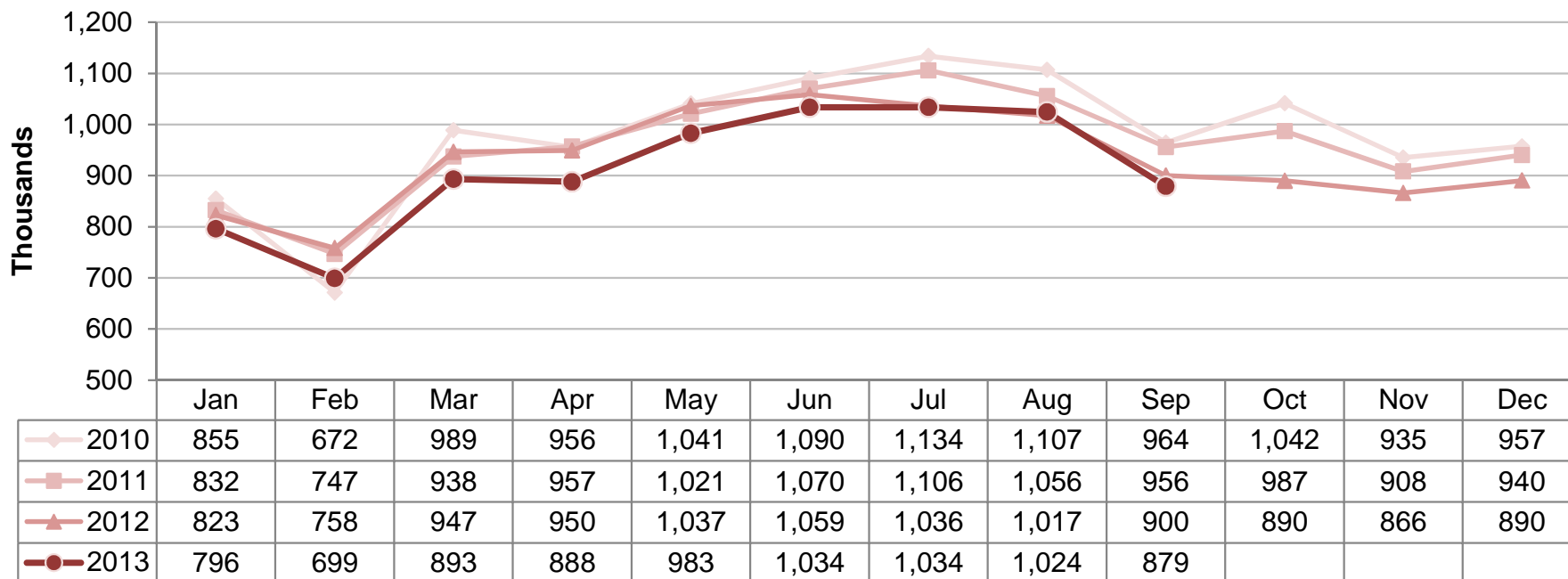


Ronald Reagan Washington National Airport
Total Commercial Passenger Enplanements
Calendar Years 2010 - 2013



	Jan	Feb	Mar	Apr	May	Jun	Jul	Aug	Sep	Oct	Nov	Dec
2010	592	509	798	783	807	810	819	813	736	839	780	749
2011	606	621	812	821	866	852	856	824	754	833	785	733
2012	621	653	825	829	858	884	897	930	787	866	846	793
2013	729	717	894	873	943	913	921	920	777			

Dulles International Airport
Total Commercial Passenger Enplanements
Calendar Years 2010 - 2013



**Commercial Passenger Market Share and Percent Change of Top Airlines
in the Washington and Baltimore Region**

September 2013

September 2012

National	Top Airlines*	Percent Change	Passengers	Market Share
	1. US Airways	0.4%	709,496	44.9%
2. Delta	-8.2%	231,531	14.6%	
3. American	-3.6%	216,368	13.7%	
4. United	-3.0%	145,513	9.2%	
5. JetBlue	0.1%	94,323	6.0%	
6. Southwest + Airtran	23.1%	79,143	5.0%	
7. Frontier	-25.1%	38,331	2.4%	
8. Alaska	3.4%	33,332	2.1%	
9. Air Canada	1.1%	17,443	1.1%	
10. Sun Country	54.2%	9,328	0.6%	
11. All Other Airlines	22.4%	<u>6,997</u>	0.4%	
Total Commercial Passengers	-1.4%	<u>1,581,805</u>	100.0%	

Top Airlines*	Passengers	Market Share
1. US Airways	706,443	44.0%
2. Delta	252,190	15.7%
3. American	224,482	14.0%
4. United	150,080	9.4%
5. JetBlue	94,200	5.9%
6. Southwest + Airtran	64,266	4.0%
7. Frontier	51,159	3.2%
8. Alaska	32,234	2.0%
9. Air Canada	17,254	1.1%
10. Sun Country	6,049	0.4%
11. All Other Airlines	<u>5,718</u>	0.4%
Total Commercial Passengers	<u>1,604,075</u>	100.0%

Dulles	Top Airlines*	Percent Change	Passengers	Market Share
	1. United	-2.0%	1,183,270	66.6%
2. Delta	-12.7%	73,629	4.1%	
3. American	-7.2%	49,016	2.8%	
4. Southwest	-4.8%	46,833	2.6%	
5. Lufthansa	13.8%	42,961	2.4%	
6. JetBlue	4.9%	36,713	2.1%	
7. British Airways	-4.7%	35,694	2.0%	
8. Air France	-8.2%	31,020	1.7%	
9. US Airways	15.4%	26,332	1.5%	
10. Virgin America	-38.2%	25,564	1.4%	
11. All Other Airlines	6.7%	<u>225,245</u>	12.7%	
Total Commercial Passengers	-2.0%	<u>1,776,277</u>	100.0%	

Top Airlines*	Passengers	Market Share
1. United	1,206,969	66.6%
2. Delta	84,319	4.7%
3. American	52,816	2.9%
4. Southwest	49,186	2.7%
5. Virgin America	41,368	2.3%
6. Lufthansa	37,758	2.1%
7. British Airways	37,463	2.1%
8. JetBlue	35,006	1.9%
9. Air France	33,798	1.9%
10. US Airways	22,827	1.3%
11. All Other Airlines	<u>211,080</u>	11.6%
Total Commercial Passengers	<u>1,812,590</u>	100.0%

Baltimore	Top Airlines*	Percent Change	Passengers	Market Share
	1. Southwest + Airtran	-2.6%	1,211,454	69.1%
2. Delta	-1.2%	176,129	10.0%	
3. United + Continental	-10.4%	100,903	5.8%	
4. US Airways	-5.3%	100,862	5.8%	
5. American	-3.8%	63,480	3.6%	
6. Spirit	83.3%	35,915	2.0%	
7. JetBlue	6.4%	25,633	1.5%	
8. British Airways	0.6%	10,179	0.6%	
9. All Other Airlines	45.9%	<u>29,282</u>	1.7%	
Total Commercial Passengers	-1.5%	<u>1,753,837</u>	100.0%	

Top Airlines*	Passengers	Market Share
1. Southwest + Airtran	1,243,199	69.8%
2. Delta	178,235	10.0%
3. United + Continental	112,623	6.3%
4. US Airways	106,456	6.0%
5. American	65,957	3.7%
6. JetBlue	24,085	1.4%
7. Spirit	19,595	1.1%
8. British Airways	10,116	0.6%
9. All Other Airlines	<u>20,071</u>	1.1%
Total Commercial Passengers	<u>1,780,337</u>	100.0%

* Includes affiliated regional carriers

Commercial Passenger Market Share Summary

Total Passengers	Sep 2013	Sep 2012	Change
National	30.9%	30.9%	0.1%
Dulles	34.7%	34.9%	-0.1%
Baltimore	34.3%	34.3%	0.1%
Domestic Passengers	Sep 2013	Sep 2012	Change
National	35.1%	34.8%	0.4%
Dulles	26.7%	27.2%	-0.5%
Baltimore	38.2%	38.1%	0.1%
International Passengers	Sep 2013	Sep 2012	Change
National	4.0%	4.8%	-0.9%
Dulles	86.8%	86.6%	0.3%
Baltimore	9.2%	8.6%	0.6%

Metropolitan Washington Airports Authority
Ronald Reagan Washington National Airport
Monthly Air Traffic Summary Report
September 2013

Description	Enplaned	Deplaned	Total	Year Ago	% Change
Aircraft Operations					
Commercial:					
Air Carrier:					
Domestic			10,031	10,275	- 2.4
International			2	4	- 50.0
Transborder			0	226	- 100.0
Total - Air Carrier			10,033	10,505	- 4.5
Regional:					
Domestic			12,715	12,056	5.5
International			4	4	0.0
Transborder			726	840	- 13.6
Total - Regional			13,445	12,900	4.2
Commercial:					
Domestic			22,746	22,331	1.9
Transborder			732	1,074	- 31.8
Total - Commercial			23,478	23,405	0.3
Non-Commercial:					
General Aviation			381	545	- 30.1
Military			256	71	260.6
Total - Non-Commercial			637	616	3.4
Grand Total - Aircraft Operations			24,115	24,021	0.4
Passengers					
Commercial:					
Air Carrier Domestic:					
Scheduled	502,087	521,034	1,023,121	1,056,875	- 3.2
Chartered	0	0	0	0	0.0
Total - Domestic Air Carrier	502,087	521,034	1,023,121	1,056,875	- 3.2
Air Carrier International:					
Scheduled	180	131	311	706	- 55.9
Chartered	0	0	0	0	0.0
Total - International Air Carrier	180	131	311	706	- 55.9
Air Carrier Transborder:					
Scheduled	0	0	0	10,474	- 100.0
Chartered	0	0	0	0	0.0
Total - Transborder Air Carrier	0	0	0	10,474	- 100.0
Total - Air Carrier	502,267	521,165	1,023,432	1,068,055	- 4.2
Regional:					
Domestic	261,499	269,922	531,421	514,564	3.3
International	45	160	205	184	11.4
Transborder	13,580	13,167	26,747	21,272	25.7
Total - Regional	275,124	283,249	558,373	536,020	4.2
Commercial:					
Domestic	763,586	790,956	1,554,542	1,571,439	- 1.1
Transborder	13,805	13,458	27,263	32,636	- 16.5
Total - Commercial	777,391	804,414	1,581,805	1,604,075	- 1.4
Non-Commercial:					
General Aviation	796	790	1,586	1,479	7.2
Military	330	310	640	1,087	- 41.1
Total - Non-Commercial	1,126	1,100	2,226	2,566	- 13.3
Grand Total - Passengers	778,517	805,514	1,584,031	1,606,641	- 1.4

**Metropolitan Washington Airports Authority
Ronald Reagan Washington National Airport
Monthly Air Traffic Summary Report
September 2013**

Description	Enplaned	Deplaned	Total	Year Ago	% Change
Cargo - Tonnes					
Mail:					
Domestic	0	0	0	2	- 98.2
International	0	0	0	0	0.0
Transborder	0	0	0	0	0.0
Total - Mail:	0	0	0	2	- 98.2
Freight + Express:					
Domestic	52	65	117	519	- 77.4
International	0	0	0	0	- 100.0
Transborder	0	0	0	0	0.0
Total - Freight + Express:	52	65	117	519	- 77.4
Mail Plus Freight + Express:					
Domestic	52	65	117	521	- 77.5
Transborder	0	0	0	0	- 92.3
Grand Total - Cargo	52	65	117	521	- 77.5

NOTE: Figures may not sum to total due to rounding.

Metropolitan Washington Airports Authority
Ronald Reagan Washington National Airport
Monthly Air Traffic Summary Report
January 2013 - September 2013

Description	Enplaned	Deplaned	Total	Year Ago	% Change
Aircraft Operations					
Commercial:					
Air Carrier:					
Domestic			93,790	92,472	1.4
International			310	292	6.2
Transborder			1,108	1,970	- 43.8
Total - Air Carrier			95,208	94,734	0.5
Regional:					
Domestic			114,178	110,544	3.3
International			327	405	- 19.3
Transborder			5,842	4,993	17.0
Total - Regional			120,347	115,942	3.8
Commercial:					
Domestic			207,968	203,016	2.4
Transborder			7,587	7,660	- 1.0
Total - Commercial			215,555	210,676	2.3
Non-Commercial:					
General Aviation			3,829	4,835	- 20.8
Military			1,801	1,286	40.0
Total - Non-Commercial			5,630	6,121	- 8.0
Grand Total - Aircraft Operations			221,185	216,797	2.0
Passengers					
Commercial:					
Air Carrier Domestic:					
Scheduled	5,074,445	5,131,638	10,206,083	9,980,739	2.3
Chartered	0	0	0	0	0.0
Total - Domestic Air Carrier	5,074,445	5,131,638	10,206,083	9,980,739	2.3
Air Carrier International:					
Scheduled	14,716	14,063	28,779	29,057	- 1.0
Chartered	0	0	0	0	0.0
Total - International Air Carrier	14,716	14,063	28,779	29,057	- 1.0
Air Carrier Transborder:					
Scheduled	25,495	26,293	51,788	89,071	- 41.9
Chartered	0	0	0	0	0.0
Total - Transborder Air Carrier	25,495	26,293	51,788	89,071	- 41.9
Total - Air Carrier	5,114,656	5,171,994	10,286,650	10,098,867	1.9
Regional:					
Domestic	2,452,751	2,455,437	4,908,188	4,406,516	11.4
International	10,605	10,363	20,968	25,796	- 18.7
Transborder	108,521	102,016	210,537	122,099	72.4
Total - Regional	2,571,877	2,567,816	5,139,693	4,554,411	12.9
Commercial:					
Domestic	7,527,196	7,587,075	15,114,271	14,387,255	5.1
Transborder	159,337	152,735	312,072	266,023	17.3
Total - Commercial	7,686,533	7,739,810	15,426,343	14,653,278	5.3
Non-Commercial:					
General Aviation	5,593	5,425	11,018	9,698	13.6
Military	2,938	2,905	5,843	9,892	- 40.9
Total - Non-Commercial	8,531	8,330	16,861	19,590	- 13.9
Grand Total - Passengers	7,695,064	7,748,140	15,443,204	14,672,868	5.3

Metropolitan Washington Airports Authority
Ronald Reagan Washington National Airport
Monthly Air Traffic Summary Report
January 2013 - September 2013

Description	Enplaned	Deplaned	Total	Year Ago	% Change
Cargo - Tonnes					
Mail:					
Domestic	5	8	13	6	107.9
International	0	0	0	0	0.0
Transborder	0	0	0	0	- 100.0
Total - Mail:	5	8	13	6	107.9
Freight + Express:					
Domestic	882	598	1,479	4,416	- 66.5
International	0	0	0	0	943.5
Transborder	1	0	1	0	260,000.0
Total - Freight + Express:	883	598	1,481	4,416	- 66.5
Mail Plus Freight + Express:					
Domestic	887	605	1,492	4,422	- 66.3
Transborder	1	0	1	0	10,826.9
Grand Total - Cargo	888	606	1,494	4,422	- 66.2

NOTE: Figures may not sum to total due to rounding.

Metropolitan Washington Airports Authority
Ronald Reagan Washington National Airport
Monthly Air Traffic Summary Report
October 2012 - September 2013

Description	Enplaned	Deplaned	Total	Year Ago	% Change
Aircraft Operations					
Commercial:					
Air Carrier:					
Domestic			124,100	121,924	1.8
International			334	306	9.2
Transborder			1,760	2,608	- 32.5
Total - Air Carrier			126,194	124,838	1.1
Regional:					
Domestic			150,487	148,028	1.7
International			399	515	- 22.5
Transborder			7,967	5,892	35.2
Total - Regional			158,853	154,435	2.9
Commercial:					
Domestic			274,587	269,952	1.7
Transborder			10,460	9,321	12.2
Total - Commercial			285,047	279,273	2.1
Non-Commercial:					
General Aviation			5,435	6,183	- 12.1
Military			2,082	1,460	42.6
Total - Non-Commercial			7,517	7,643	- 1.6
Grand Total - Aircraft Operations			292,564	286,916	2.0
Passengers					
Commercial:					
Air Carrier Domestic:					
Scheduled	6,728,690	6,760,829	13,489,519	13,079,386	3.1
Chartered	0	0	0	0	0.0
Total - Domestic Air Carrier	6,728,690	6,760,829	13,489,519	13,079,386	3.1
Air Carrier International:					
Scheduled	16,239	14,898	31,137	30,638	1.6
Chartered	0	0	0	0	0.0
Total - International Air Carrier	16,239	14,898	31,137	30,638	1.6
Air Carrier Transborder:					
Scheduled	39,855	42,470	82,325	116,715	- 29.5
Chartered	0	0	0	0	0.0
Total - Transborder Air Carrier	39,855	42,470	82,325	116,715	- 29.5
Total - Air Carrier	6,784,784	6,818,197	13,602,981	13,226,739	2.8
Regional:					
Domestic	3,255,237	3,249,275	6,504,512	5,920,991	9.9
International	12,648	12,324	24,972	32,547	- 23.3
Transborder	138,340	132,473	270,813	145,636	86.0
Total - Regional	3,406,225	3,394,072	6,800,297	6,099,174	11.5
Commercial:					
Domestic	9,983,927	10,010,104	19,994,031	19,000,377	5.2
Transborder	207,082	202,165	409,247	325,536	25.7
Total - Commercial	10,191,009	10,212,269	20,403,278	19,325,913	5.6
Non-Commercial:					
General Aviation	7,395	7,151	14,546	12,812	13.5
Military	3,980	3,972	7,952	11,878	- 33.1
Total - Non-Commercial	11,375	11,123	22,498	24,690	- 8.9
Grand Total - Passengers	10,202,384	10,223,392	20,425,776	19,350,603	5.6

Metropolitan Washington Airports Authority
Ronald Reagan Washington National Airport
Monthly Air Traffic Summary Report
October 2012 - September 2013

Description	Enplaned	Deplaned	Total	Year Ago	% Change
Cargo - Tonnes					
Mail:					
Domestic	6	8	14	8	76.1
International	0	0	0	0	0.0
Transborder	0	0	0	0	- 86.6
Total - Mail:	6	8	14	8	72.6
Freight + Express:					
Domestic	1,438	1,583	3,021	5,970	- 49.4
International	0	0	0	0	943.5
Transborder	1	0	2	0	360,000.0
Total - Freight + Express:	1,439	1,584	3,023	5,970	- 49.4
Mail Plus Freight + Express:					
Domestic	1,444	1,591	3,035	5,978	- 49.2
Transborder	1	0	2	0	882.6
Grand Total - Cargo	1,445	1,592	3,037	5,978	- 49.2

NOTE: Figures may not sum to total due to rounding.

Metropolitan Washington Airports Authority
Washington Dulles International Airport
Monthly Air Traffic Summary Report
September 2013

Description	Enplaned	Deplaned	Total	Year Ago	% Change
Aircraft Operations					
Commercial:					
Air Carrier:					
Domestic			6,034	6,333	- 4.7
International			3,016	2,871	5.1
Transborder			0	0	0.0
Total - Air Carrier			9,050	9,204	- 1.7
Regional:					
Domestic			12,039	11,877	1.4
International			0	0	0.0
Transborder			915	1,052	- 13.0
Total - Regional			12,954	12,929	0.2
Commercial:					
Domestic			18,073	18,210	- 0.8
International			3,931	3,923	0.2
Total - Commercial			22,004	22,133	- 0.6
Non-Commercial:					
General Aviation			3,778	3,790	- 0.3
Military			100	71	40.8
Total - Non-Commercial			3,878	3,861	0.4
Grand Total - Aircraft Operations			25,882	25,994	- 0.4
Passengers					
Commercial:					
Air Carrier Domestic:					
Scheduled	341,929	355,487	697,416	736,033	- 5.2
Chartered	1,006	1,090	2,096	3,349	- 37.4
Total - Domestic Air Carrier	342,935	356,577	699,512	739,382	- 5.4
Air Carrier International:					
Scheduled	274,357	281,980	556,337	543,812	2.3
Chartered	548	490	1,038	1,071	- 3.1
Total - International Air Carrier	274,905	282,470	557,375	544,883	2.3
Air Carrier Transborder:					
Scheduled	0	0	0	0	0.0
Chartered	0	0	0	0	0.0
Total - Transborder Air Carrier	0	0	0	0	0.0
Total - Air Carrier	617,840	639,047	1,256,887	1,284,265	- 2.1
Regional:					
Domestic	242,080	238,573	480,653	488,961	- 1.7
International	0	0	0	0	0.0
Transborder	19,397	19,300	38,697	39,364	- 1.7
Total - Regional	261,477	257,873	519,350	528,325	- 1.7
Commercial:					
Domestic	585,015	595,150	1,180,165	1,228,343	- 3.9
International	294,302	301,770	596,072	584,247	2.0
Total - Commercial	879,317	896,920	1,776,237	1,812,590	- 2.0
Non-Commercial:					
General Aviation	6,923	6,755	13,678	12,930	5.8
Military	74	118	192	63	204.8
Total - Non-Commercial	6,997	6,873	13,870	12,993	6.7
Grand Total - Passengers	886,314	903,793	1,790,107	1,825,583	- 1.9

Metropolitan Washington Airports Authority
Washington Dulles International Airport
Monthly Air Traffic Summary Report
September 2013

Description	Enplaned	Deplaned	Total	Year Ago	% Change
Cargo - Tonnes					
Mail:					
Domestic	168	316	484	352	37.5
International	656	383	1,039	81	1,180.1
Total - Mail:	824	699	1,523	433	251.5
Freight + Express:					
Domestic	3,691	2,972	6,663	8,436	- 21.0
International	4,315	7,689	12,004	13,080	- 8.2
Total - Freight + Express:	8,006	10,661	18,667	21,516	- 13.2
Mail Plus Freight + Express:					
Domestic	3,859	3,288	7,147	8,788	- 18.7
International	4,971	8,072	13,043	13,162	- 0.9
Grand Total - Cargo	8,830	11,360	20,190	21,949	- 8.0

NOTE: Figures may not sum to total due to rounding.

Metropolitan Washington Airports Authority
Washington Dulles International Airport
Monthly Air Traffic Summary Report
January 2013 - September 2013

Description	Enplaned	Deplaned	Total	Year Ago	% Change
Aircraft Operations					
Commercial:					
Air Carrier:					
Domestic			55,557	61,567	- 9.8
International			27,258	25,975	4.9
Transborder			12	28	- 57.1
Total - Air Carrier			82,827	87,570	- 5.4
Regional:					
Domestic			109,264	108,746	0.5
International			0	0	0.0
Transborder			7,941	8,077	- 1.7
Total - Regional			117,205	116,823	0.3
Commercial:					
Domestic			164,821	170,313	- 3.2
International			35,211	34,080	3.3
Total - Commercial			200,032	204,393	- 2.1
Non-Commercial:					
General Aviation			30,650	32,096	- 4.5
Military			774	571	35.6
Total - Non-Commercial			31,424	32,667	- 3.8
Grand Total - Aircraft Operations			231,456	237,060	- 2.4
Passengers					
Commercial:					
Air Carrier Domestic:					
Scheduled	3,351,173	3,399,035	6,750,208	7,360,584	- 8.3
Chartered	7,187	7,539	14,726	16,780	- 12.2
Total - Domestic Air Carrier	3,358,360	3,406,574	6,764,934	7,377,364	- 8.3
Air Carrier International:					
Scheduled	2,465,319	2,544,397	5,009,716	4,792,729	4.5
Chartered	4,339	4,512	8,851	9,698	- 8.7
Total - International Air Carrier	2,469,658	2,548,909	5,018,567	4,802,427	4.5
Air Carrier Transborder:					
Scheduled	0	0	0	0	0.0
Chartered	161	312	473	796	- 40.6
Total - Transborder Air Carrier	161	312	473	796	- 40.6
Total - Air Carrier	5,828,179	5,955,795	11,783,974	12,180,587	- 3.3
Regional:					
Domestic	2,237,573	2,205,974	4,443,547	4,647,577	- 4.4
International	0	0	0	0	0.0
Transborder	165,345	170,947	336,292	304,693	10.4
Total - Regional	2,402,918	2,376,921	4,779,839	4,952,270	- 3.5
Commercial:					
Domestic	5,595,933	5,612,548	11,208,481	12,024,941	- 6.8
International	2,635,164	2,720,168	5,355,332	5,107,916	4.8
Total - Commercial	8,231,097	8,332,716	16,563,813	17,132,857	- 3.3
Non-Commercial:					
General Aviation	55,608	55,308	110,916	115,295	- 3.8
Military	425	478	903	551	63.9
Total - Non-Commercial	56,033	55,786	111,819	115,846	- 3.5
Grand Total - Passengers	8,287,130	8,388,502	16,675,632	17,248,703	- 3.3

Metropolitan Washington Airports Authority
Washington Dulles International Airport
Monthly Air Traffic Summary Report
January 2013 - September 2013

Description	Enplaned	Deplaned	Total	Year Ago	% Change
Cargo - Tonnes					
Mail:					
Domestic	1,327	2,526	3,853	3,226	19.5
International	2,728	2,129	4,857	2,690	80.5
Total - Mail:	4,056	4,655	8,711	5,916	47.2
Freight + Express:					
Domestic	34,251	33,042	67,293	80,224	- 16.1
International	41,370	68,698	110,068	114,315	- 3.7
Total - Freight + Express:	75,621	101,741	177,361	194,539	- 8.8
Mail Plus Freight + Express:					
Domestic	35,578	35,568	71,146	83,450	- 14.7
International	44,098	70,828	114,926	117,006	- 1.8
Grand Total - Cargo	79,676	106,396	186,072	200,455	- 7.2

NOTE: Figures may not sum to total due to rounding.

Metropolitan Washington Airports Authority
Washington Dulles International Airport
Monthly Air Traffic Summary Report
October 2012 - September 2013

Description	Enplaned	Deplaned	Total	Year Ago	% Change
Aircraft Operations					
Commercial:					
Air Carrier:					
Domestic			74,087	82,694	- 10.4
International			35,295	34,198	3.2
Transborder			13	30	- 56.7
Total - Air Carrier			109,395	116,922	- 6.4
Regional:					
Domestic			144,431	146,327	- 1.3
International			0	0	0.0
Transborder			10,598	10,151	4.4
Total - Regional			155,029	156,478	- 0.9
Commercial:					
Domestic			218,518	229,021	- 4.6
International			45,906	44,379	3.4
Total - Commercial			264,424	273,400	- 3.3
Non-Commercial:					
General Aviation			41,094	43,096	- 4.6
Military			956	685	39.6
Total - Non-Commercial			42,050	43,781	- 4.0
Grand Total - Aircraft Operations			306,474	317,181	- 3.4
Passengers					
Commercial:					
Air Carrier Domestic:					
Scheduled	4,468,585	4,522,359	8,990,944	9,854,953	- 8.8
Chartered	8,983	9,415	18,398	22,388	- 17.8
Total - Domestic Air Carrier	4,477,568	4,531,774	9,009,342	9,877,341	- 8.8
Air Carrier International:					
Scheduled	3,206,950	3,261,464	6,468,414	6,245,072	3.6
Chartered	5,906	6,120	12,026	13,393	- 10.2
Total - International Air Carrier	3,212,856	3,267,584	6,480,440	6,258,465	3.5
Air Carrier Transborder:					
Scheduled	0	0	0	0	0.0
Chartered	161	312	473	796	- 40.6
Total - Transborder Air Carrier	161	312	473	796	- 40.6
Total - Air Carrier	7,690,585	7,799,670	15,490,255	16,136,602	- 4.0
Regional:					
Domestic	2,971,245	2,937,527	5,908,772	6,232,858	- 5.2
International	0	0	0	0	0.0
Transborder	216,162	225,184	441,346	387,567	13.9
Total - Regional	3,187,407	3,162,711	6,350,118	6,620,425	- 4.1
Commercial:					
Domestic	7,448,813	7,469,301	14,918,114	16,110,199	- 7.4
International	3,429,179	3,493,080	6,922,259	6,646,828	4.1
Total - Commercial	10,877,992	10,962,381	21,840,373	22,757,027	- 4.0
Non-Commercial:					
General Aviation	73,941	74,485	148,426	154,236	- 3.8
Military	477	486	963	569	69.2
Total - Non-Commercial	74,418	74,971	149,389	154,805	- 3.5
Grand Total - Passengers	10,952,410	11,037,352	21,989,762	22,911,832	- 4.0

Metropolitan Washington Airports Authority
Washington Dulles International Airport
Monthly Air Traffic Summary Report
October 2012 - September 2013

Description	Enplaned	Deplaned	Total	Year Ago	% Change
Cargo - Tonnes					
Mail:					
Domestic	1,855	3,205	5,060	4,838	4.6
International	3,313	2,481	5,795	4,154	39.5
Total - Mail:	5,168	5,686	10,854	8,992	20.7
Freight + Express:					
Domestic	46,898	46,831	93,729	110,432	- 15.1
International	56,634	92,332	148,966	157,443	- 5.4
Total - Freight + Express:	103,532	139,163	242,694	267,876	- 9.4
Mail Plus Freight + Express:					
Domestic	48,753	50,035	98,788	115,271	- 14.3
International	59,947	94,814	154,760	161,597	- 4.2
Grand Total - Cargo	108,700	144,849	253,549	276,868	- 8.4

NOTE: Figures may not sum to total due to rounding.