



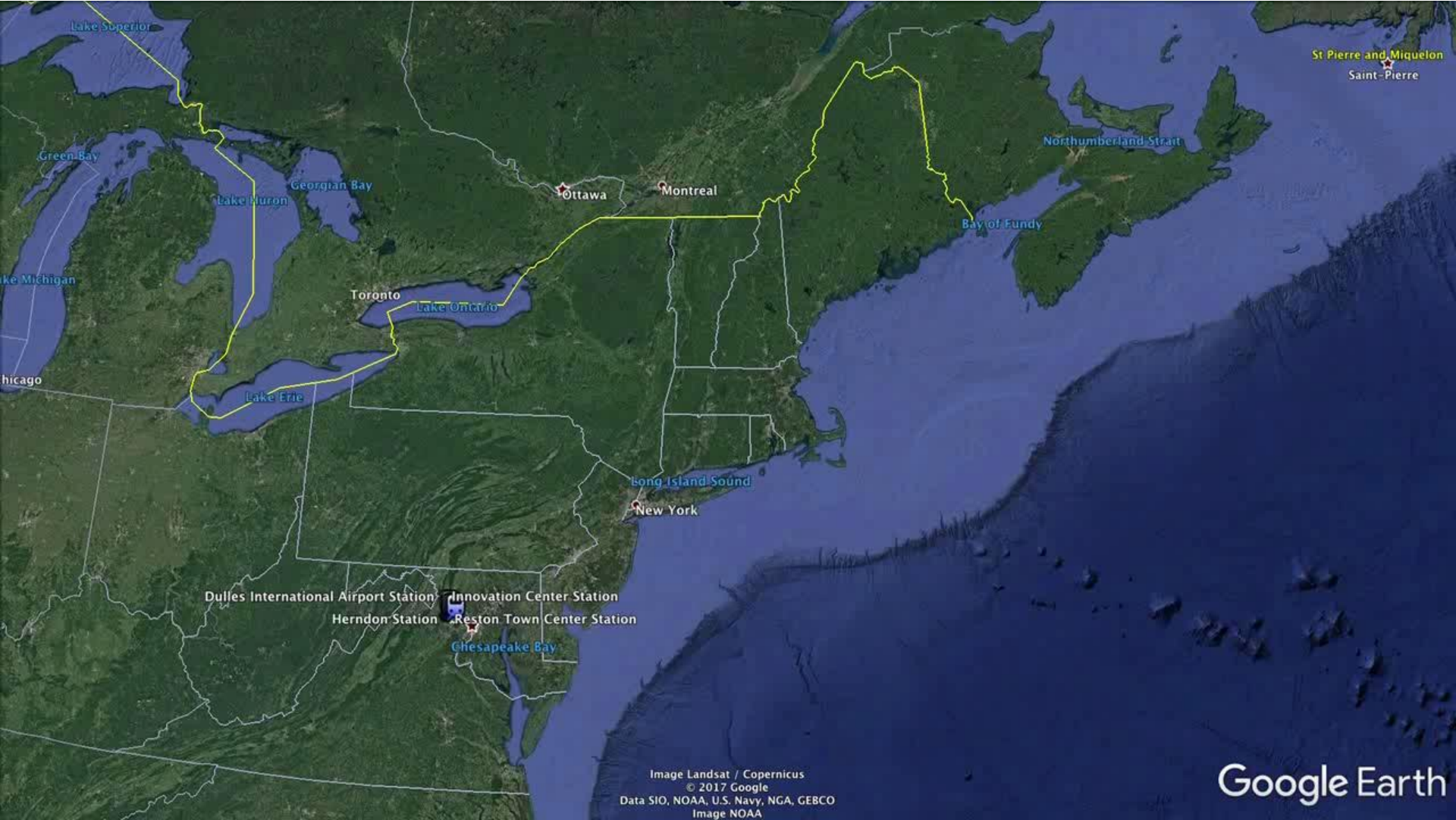
# Dulles Corridor Metrorail Project Phase 1 & Phase 2 Updates

June 30, 2017

Charles W. Stark  
Executive Project Director



# Phase 2 Station Tour





# Phase 1



# Phase 1 Cost Summary

Quarter Expenditures (Feb, Mar, Apr)	\$	3.5 Million
Total Expenditures (Thru April 30, 2017)	\$	2.892 Billion
Forecast at Completion	\$	2.982 Billion



# Phase 1 Quarterly Update

- Dulles Transit Partners (Bechtel) Closeout Status
  - Bechtel’s remaining work consists of the Virginia Department of Transportation (VDOT) deficiency items which are contractually being handled as Warranty and Latent Defect Items.
  - There is significant disagreement between MWAA and Bechtel over the scope of Bechtel’s responsibility for these items.
  - The disagreement includes the number of pipe deficiencies that Bechtel is required to repair, and the responsibility to repair items on the Dulles Connector Road including the left shoulder cross section, surface water runoff at Chain Bridge Road and the median cross section at the West Falls Church Station bus lane.
  - MWAA will:
    - Complete discussions with Bechtel to get started as soon as possible on the scope of work Bechtel is willing to perform.
    - Perform the remainder of disputed work by Task Order Contractor.
    - Pursue Bechtel for reimbursement of the Task Order costs.



# Phase 1 Quarterly Update

- Closeout of VDOT Comprehensive Agreement
  - As indicated earlier, the majority of remaining deficiencies are Bechtel's responsibility.
  - MWAA is pursuing remediation of deficiencies via the Phase 1 Task Order Contract. This includes the Bechtel disputed work, which is weather dependent and forecasted for completion in 2017.
- Task Order Contract Status
  - Task Orders with Notice To Proceed (NTP): 31 issued; 26 complete.
  - Large task orders:
    - Goal to complete final design in July 2017.
    - Concrete pavement repairs on hold pending resolution of sewer pipe deficiencies.



# Old Meadow Road Schedule

- The final design is underway for the realignment.
- The Project Schedule Moving Forward
  - Evaluate Alternate Design Concept: Complete.
  - Issue NTP for Final Design: Complete.
  - Complete Final Design: July 2017.
  - Award Construction Contract: October 2017.
  - Construction: October 2017 to April 2018.
- Significant Risks
  - Utility Company cooperation in Design and Execution of minor Relocations.
  - Design Waiver Approval (Curb Radius) by VDOT.



# Phase 2

**Package A 52% Complete**  
**Package B 37% Complete**







## PHASE 2

# MONTHLY COST AND SCHEDULE UPDATE AS OF APRIL 30, 2017

## JUNE 2017





# Phase 2 Cost Summary

April Expenditures	\$	40.3 Million
Total Expenditures	\$	1.199 Billion
Total Budget	\$	2.778 Billion
Total Forecast	\$	2.778 Billion

# Phase 2 Contingency Utilization

<u>Total Contingency</u>	<u>\$ 551.5 Million</u>
Contingency Utilized through March 2017	\$ 125.8 Million
Contingency Utilized in April 2017	\$ 1.4 Million
Total Contingency Utilized through April 2017	\$ 127.2 Million
<u>Remaining Contingency</u>	<u>\$ 424.3 Million</u>

# Guideway & Stations

## Design-Build Activities

### Upcoming

- Traction Power Substation and Tie Breaker Station sites are being prepared and support slabs will be poured for prefabricated building deliveries.
- Herndon Station – Continue station electrical, mechanical and plumbing (MEP) and structural steel vault roof detailing, painting and decking.
- Innovation Station – Continue roofing installation, escalator installation, and electrical and plumbing; erect pedestrian bridges and assemble more pedestrian bridge spans.
- Dulles Station – Continue setting precast and aerial guideway structures, MEP, elevator and escalator installation and tie-in of pedestrian tunnel to Station.
- Track – Ballasted rail continues along the DIAAH median and Aerial Direct Fix Track is progressing toward the west side of the Dulles Airport Station.



# Guideway & Stations Design-Build Activities

Forming Straddle Bent End Sections for Encasement Pour







# Guideway & Stations Design-Build Activities

Welding Pedestrian Bridge Spans for South Side of Innovation Station





# Guideway & Stations Design-Build Activities

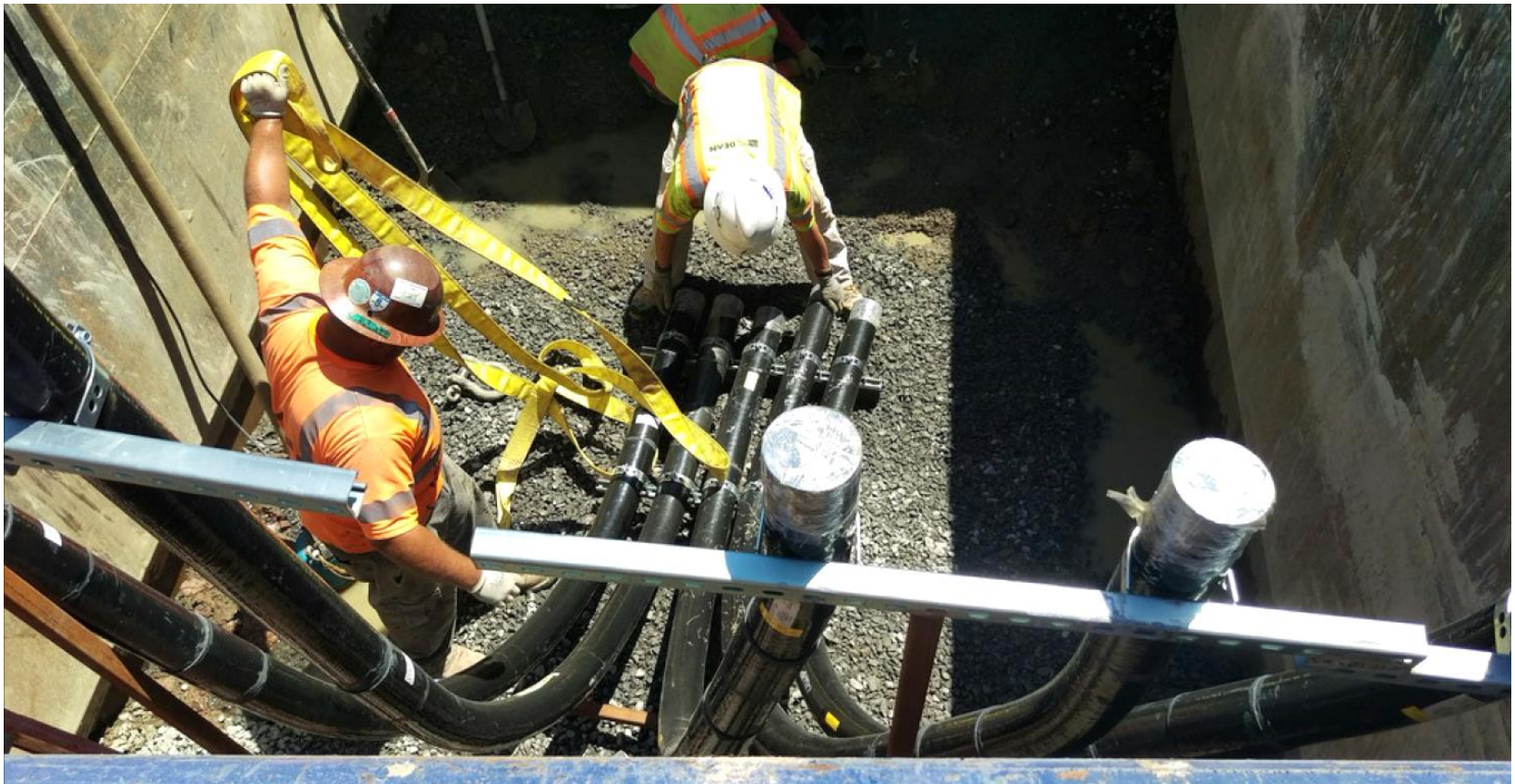
Crews Installing Reinforcing for Cable Vault for TPSS #12





# Guideway & Stations Design-Build Activities

Crews Placing Pre-assembled Conduit Racks Feeding Tie Breaker Station Sites







# Guideway & Stations Design-Build Activities

Prepare Guideway Deck in Yard Leads for Concrete Pour



# Guideway & Stations Design-Build Activities

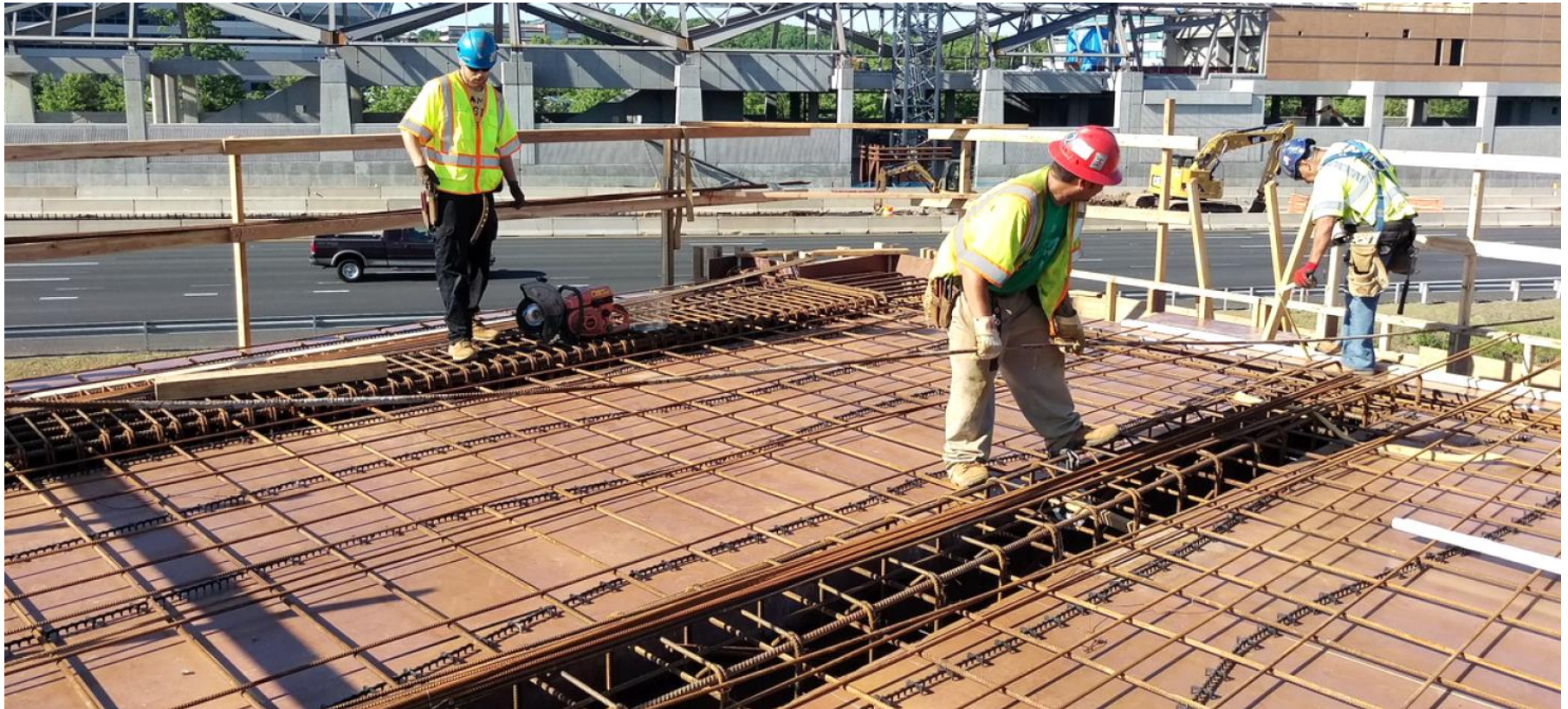
Crews Perform Fine Tuning of Concrete to Set Rails on Elevated Guideway





# Guideway & Stations Design-Build Activities

Installing Mezzanine Slab Reinforcing at Reston North Pavilion





# Guideway & Stations Design-Build Activities

Ironworkers Detailing Structural Steel at Herndon Station





# Guideway & Stations Design-Build Activities

Setting Precast Platform Planks for Dulles Station



# Guideway & Stations Design-Build Activities

Setting Steel Front Wall Panels at Dulles Station





# Guideway & Stations Design-Build Activities

Cast in Place and Precast Walls and Electrical Conduits at Loudoun Gateway Station



# Guideway & Stations Design-Build Activities

Ashburn Station Cast-in-Place Walls and Columns



# April Contingency Utilization

<b>Package B (HP)</b>	<b>\$</b>	<b>-0.1 Million</b>
• Miscellaneous Changes (less than \$100,000)	<b>\$</b>	<b>(92,677)</b>

# WMATA Rail Yard & Maintenance Facility Design-Build Activities

## Current

- Construction of all at-grade and underground facilities has been permitted.
- Final grading, storm and utility installation and yard layout continues.
- Current efforts are concentrated in the Service and Inspection Building's (SIB) precast wall panel and deck installation.
- Steel erection at the Maintenance of Way Building complete, precast wall panels follow.
- Rail welding progressing, turnouts being installed.
- Site grading continues over remainder of the site.



# WMATA Rail Yard & Maintenance Facility Design-Build Activities

## Ongoing

- Receipt and erection of structural steel.
- Prepare for SIB machine shop equipment foundations.
- Special trackwork delivery and installation.
- Sub-ballast installation, concrete tie delivery and placement, rail welding and installation.
- Resolve open design changes.
- Review shop documents and construction submittals.
- Interface coordination with Package A.

# WMATA Rail Yard & Maintenance Facility Design-Build Activities

SIB and Warehouse Building Foundations from the West



# WMATA Rail Yard & Maintenance Facility Design-Build Activities

SIB Precast Erection Operation Looking East



# WMATA Rail Yard & Maintenance Facility Design-Build Activities

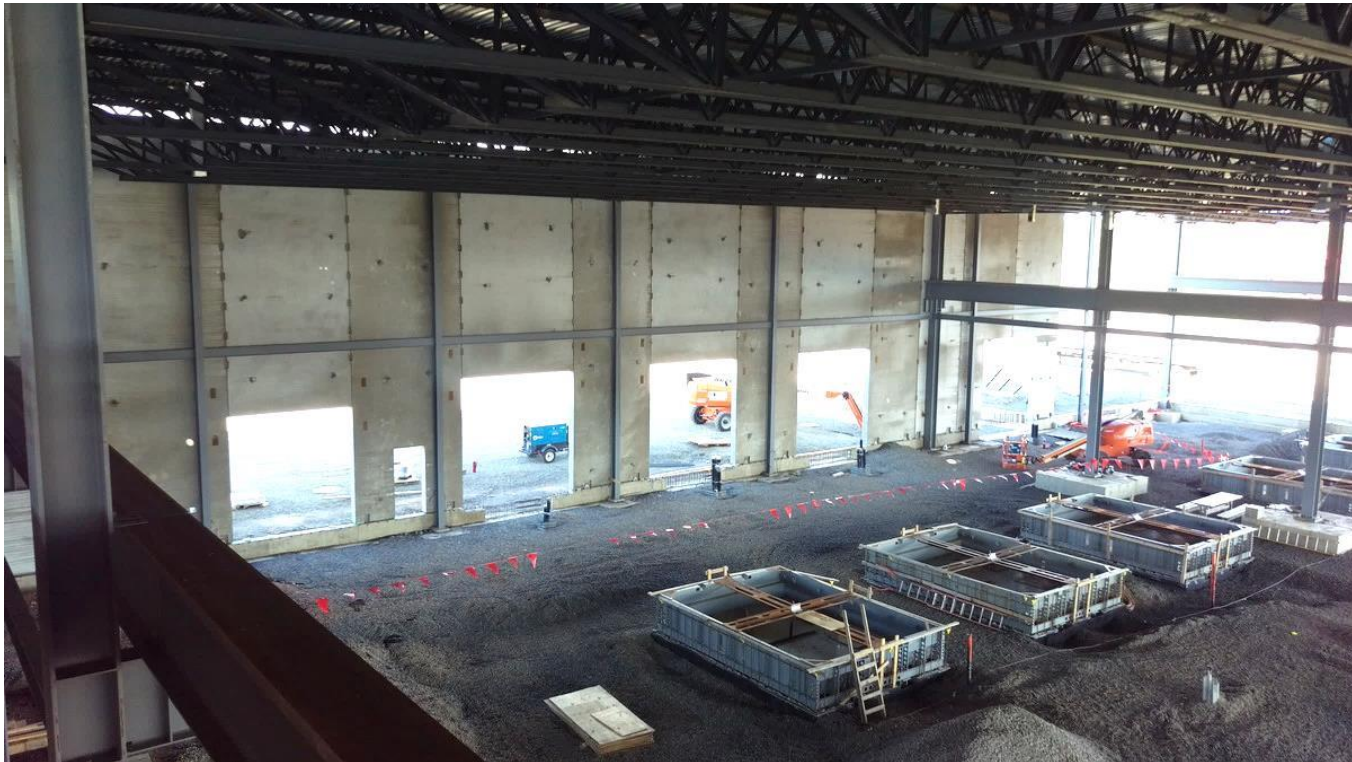
Transportation Police Building Steel Erection and Lay Up Yard





# WMATA Rail Yard & Maintenance Facility Design-Build Activities

SIB Interior Looking at East Train Entrances



# WMATA Rail Yard & Maintenance Facility Design-Build Activities

SIB Precast Wall Panels at North East Corner- Yard Control Tower





# WMATA Rail Yard & Maintenance Facility Design-Build Activities

Maintenance Of Way Building Steel Framework



# WMATA Rail Yard & Maintenance Facility Design-Build Activities

Train Wash Facility Foundations with Package A Lead Track in Distance





# Dulles Int'l Airport Station Progress

Three elevator shafts in the foreground  
and escalators in the background





**METROPOLITAN  
WASHINGTON  
AIRPORTS AUTHORITY**

**MWAA.COM**

**DULLESMETRO.COM**



@Reagan\_Airport

@Dulles\_Airport

@Dulles\_Toll\_Road



reaganairport

FlyDulles

dullestollroad

