

APPENDIX A
FIGURES

WASHINGTON DULLES INTERNATIONAL AIRPORT
ENVIRONMENTAL ASSESSMENT

LIST OF FIGURES

- 1-1 IAD General Location Map
- 1-2 Location of Proposed ATCT
- 1-3 Terminal Area with Proposed ATCT Site
- 1-4 Proposed ATCT Site Plan
- 1-5 Views of Proposed ATCT
- 1-6 Region of Influence

- 2-1 Potential Sites for New ATCT
- 2-2 Proposed Communications Ductbanks and Utility Corridors

- 3-1 IAD General Location Map
- 3-2 Contractor Staging Area
- 3-3 Soil Stockpile Area
- 3-4 Future Planned Development Projects
- 3-5 Areas Included in the Tier 2 and Related Projects Joint Application Permit
- 3-6 Public Parks within Region of Influence
- 3-7 Historic Structures
- 3-8 Rare, Threatened, and Endangered Species Survey
- 3-9 100-Year Floodplain
- 3-10 Areas of Airport with Potential for Prehistoric Sites
- 3-11 Location of Analysis Viewpoints
- 3-12 Viewpoints 1 and 2
- 3-13 Viewpoints 3 and 4
- 3-14 Viewpoints 5 and 6
- 3-15 Viewpoints 7 and 11
- 3-16 Viewpoints 8, 9 and 10
- 3-17 Viewpoint 12
- 3-18 Viewpoint 13
- 3-19 1998 Noise Contour Map
- 3-20 Projected 2007 Noise Contour Map
- 3-21 Surface Water Drainage
- 3-22 Stormwater Management
- 3-23 Wetlands
- 3-24 Wetland within the Proposed ATCT Area

[Click here to return to main document](#)

Figure 1-1

IAD General Location Map

WASHINGTON DULLES INTERNATIONAL AIRPORT

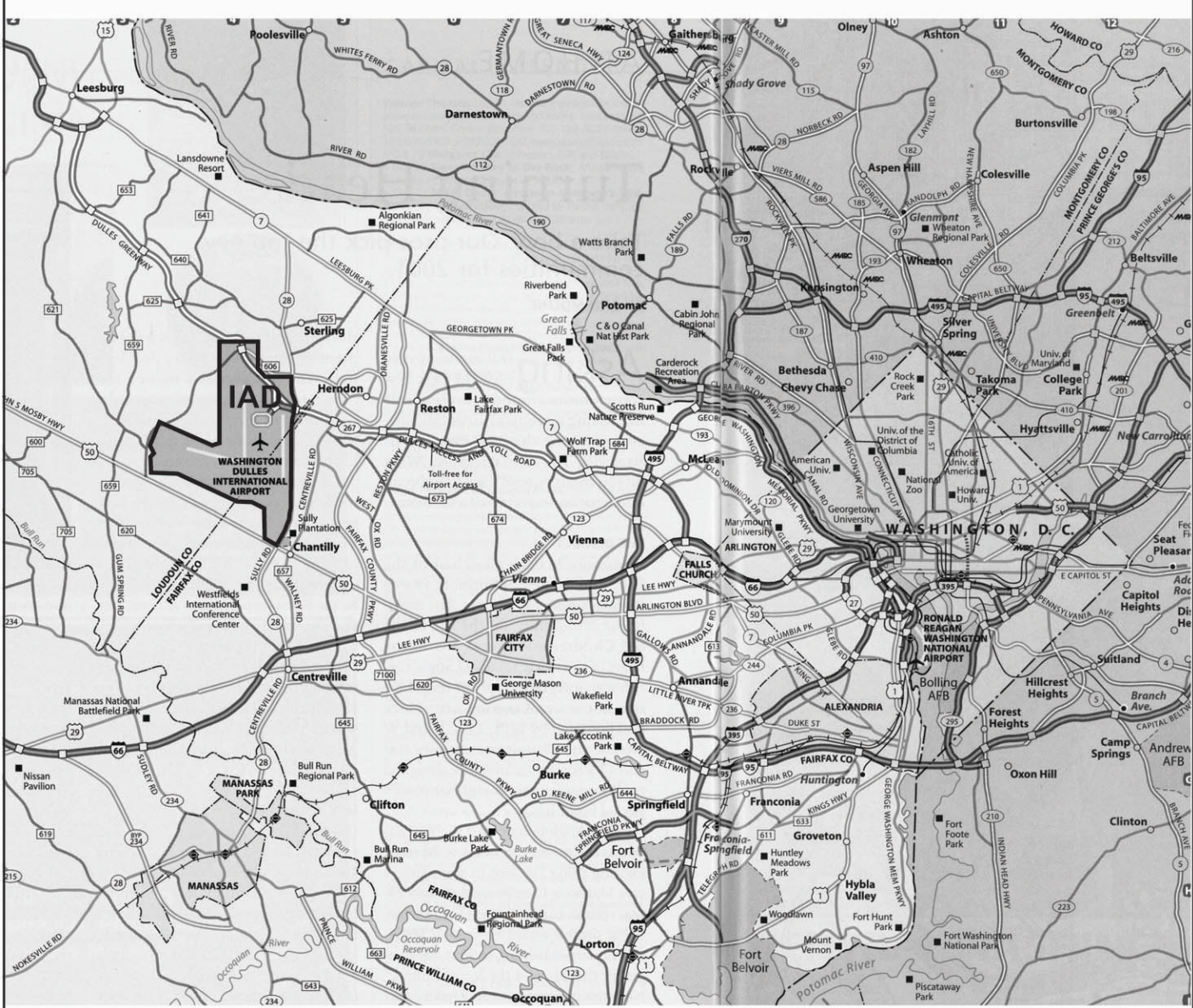
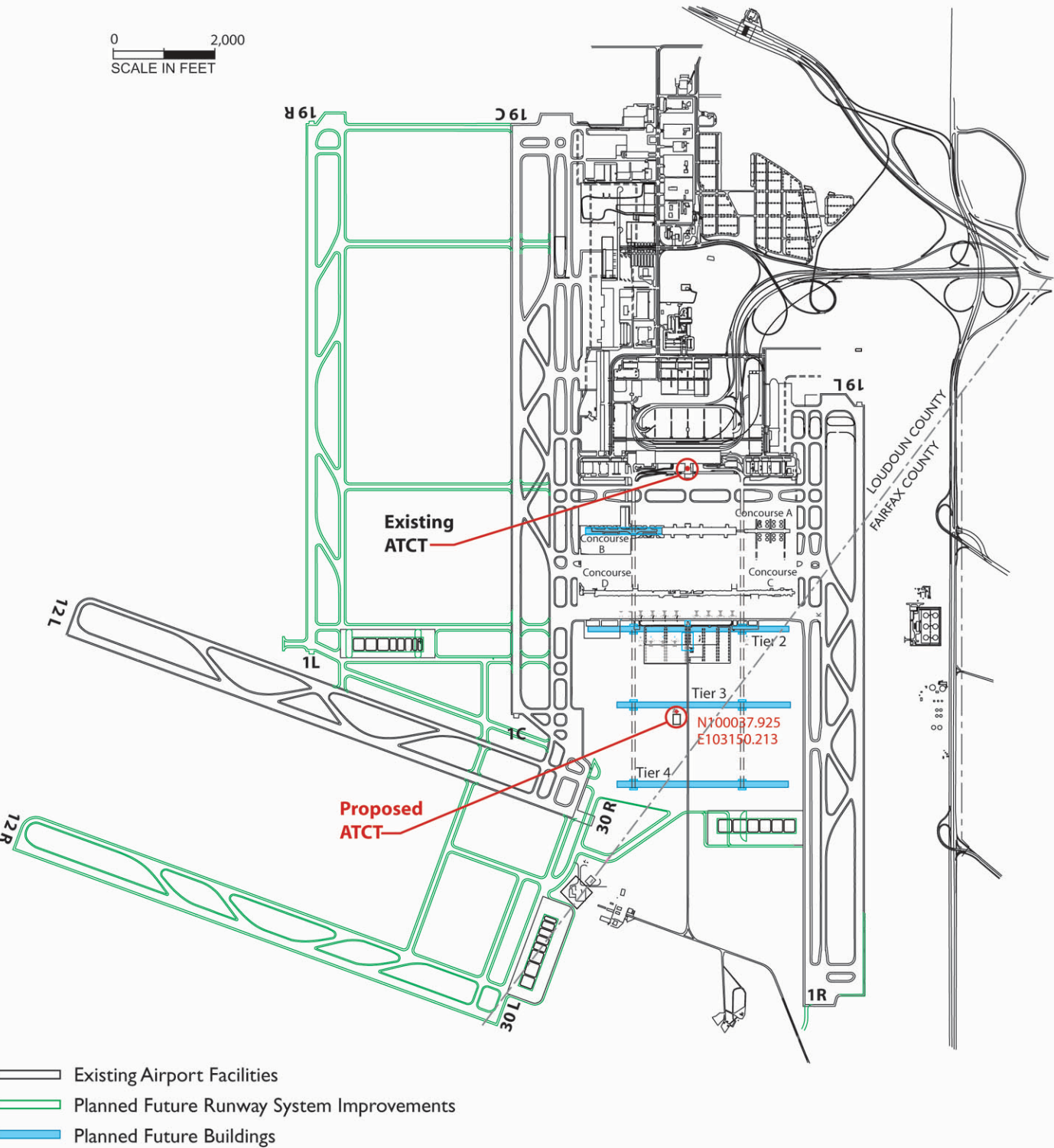


Figure 1-2

Location of Proposed ATCT

WASHINGTON DULLES INTERNATIONAL AIRPORT



- Existing Airport Facilities
- Planned Future Runway System Improvements
- Planned Future Buildings

Figure 1-3

Terminal Area with Proposed ATCT Site

WASHINGTON DULLES INTERNATIONAL AIRPORT

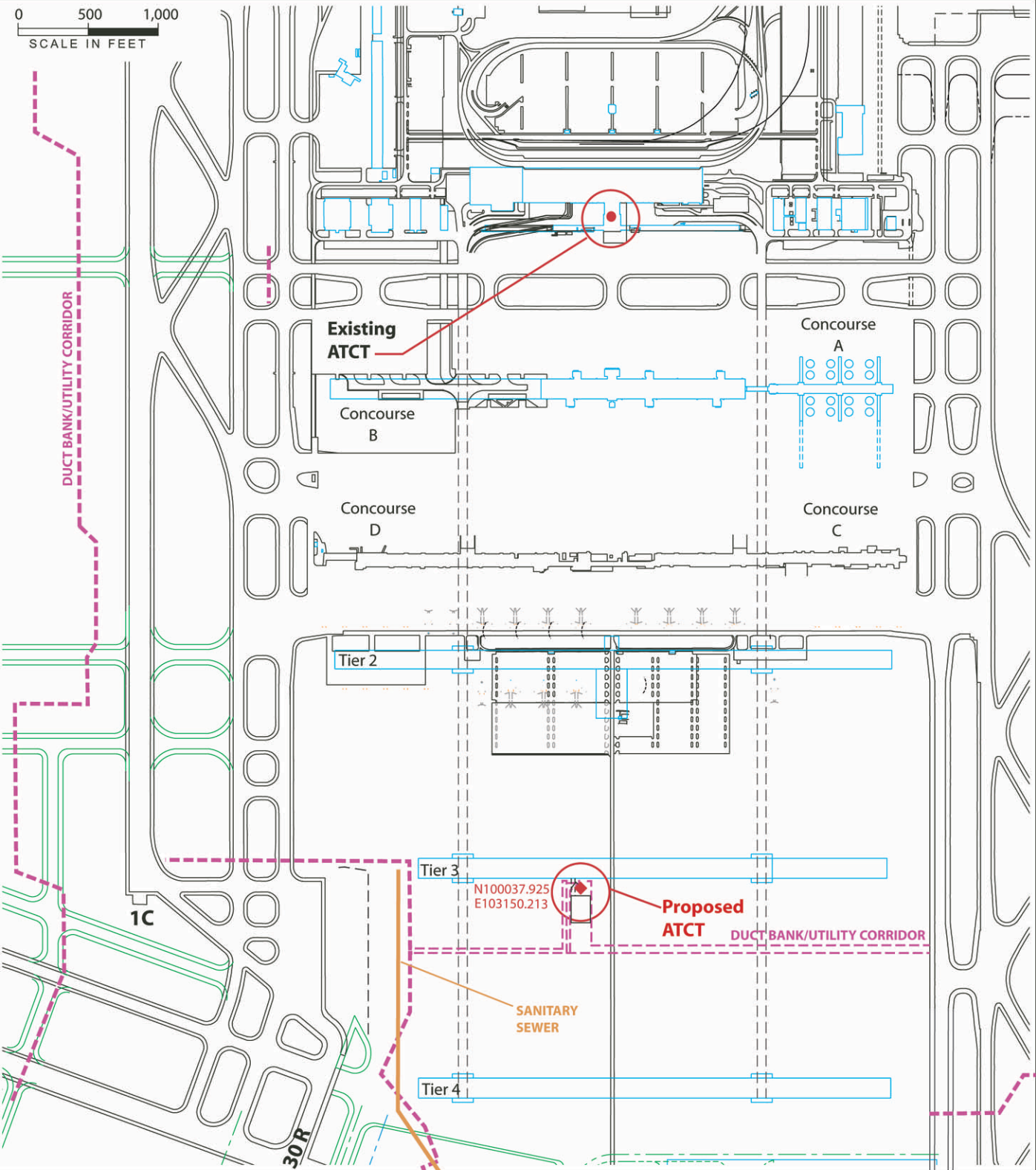
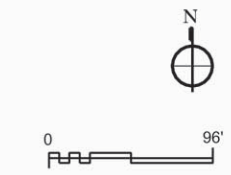
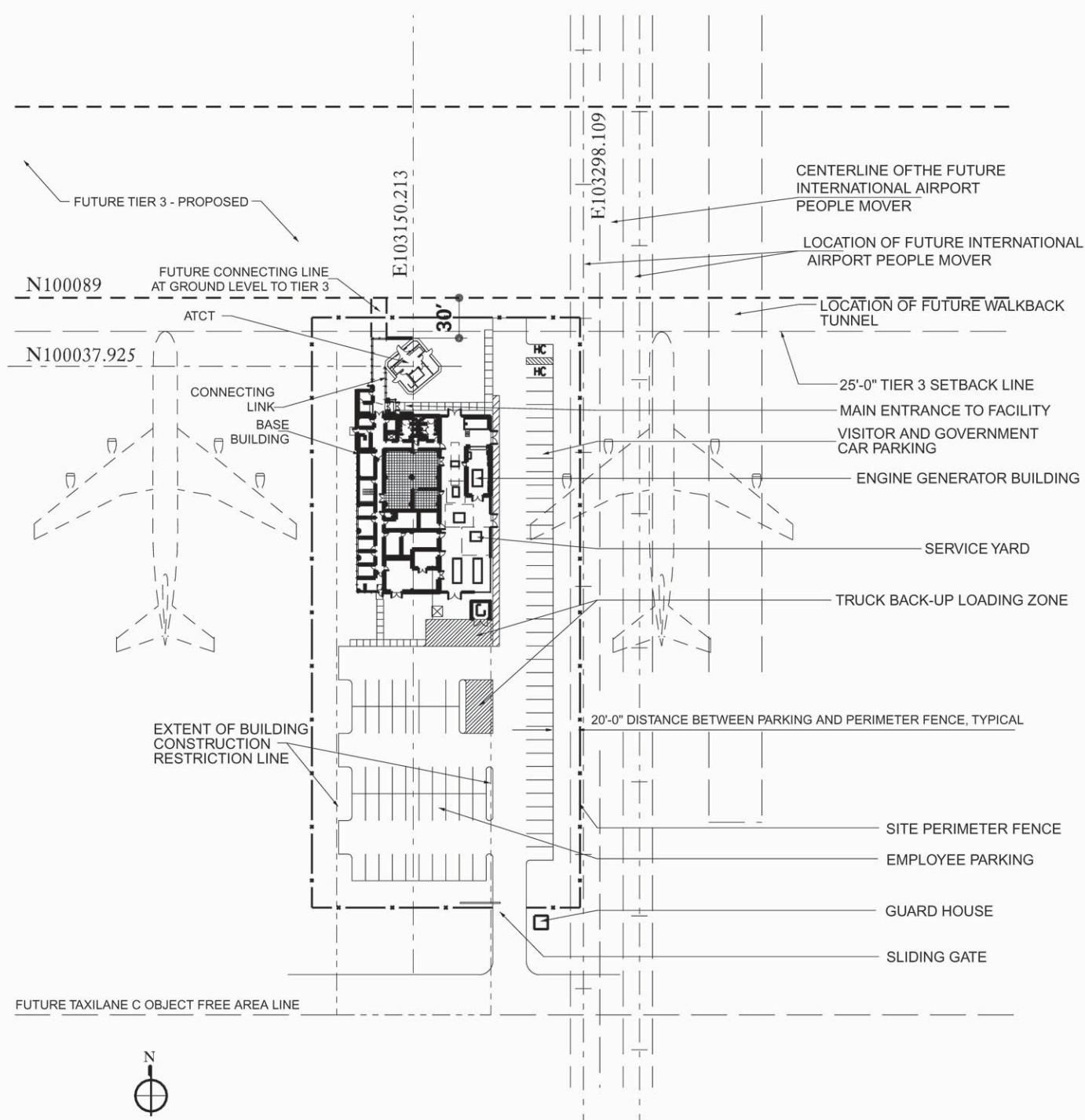


Figure 1-4

Proposed ATCT Site Plan

WASHINGTON DULLES INTERNATIONAL AIRPORT



Source: Jacobs Facilities, Inc. July 2002

Figure 1-5

View of Proposed ATCT

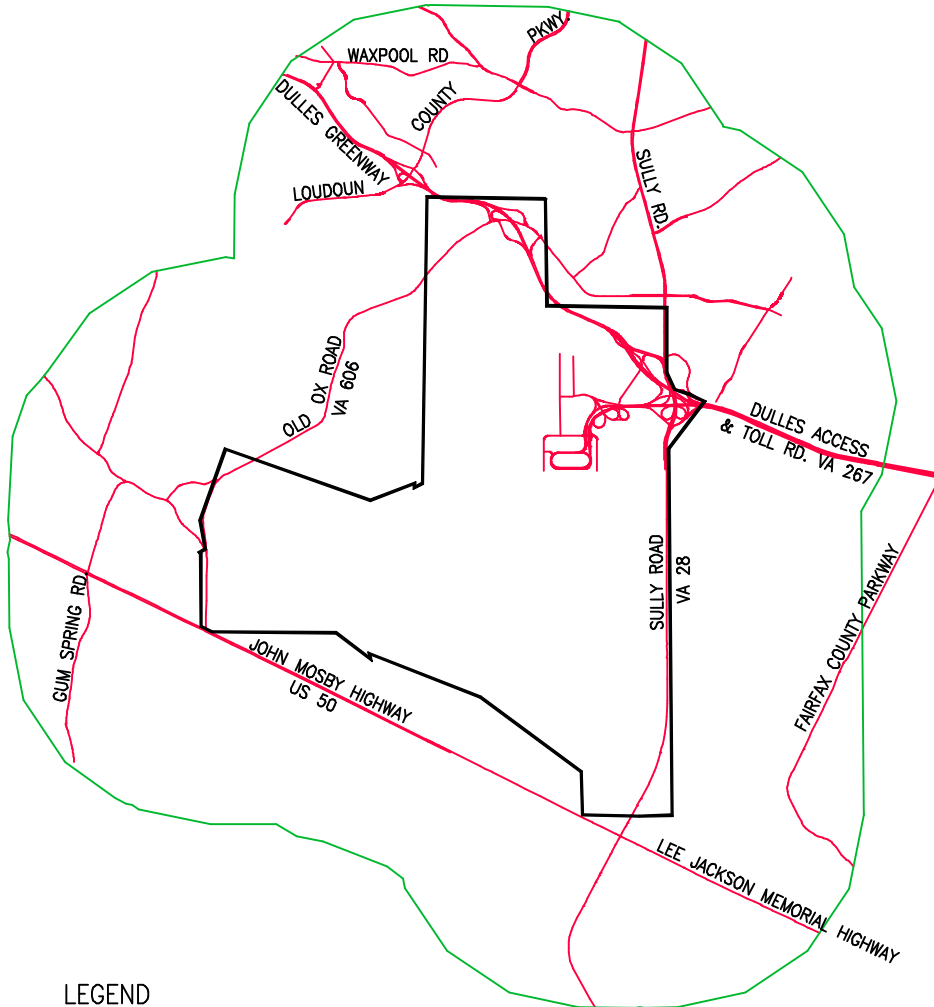
WASHINGTON DULLES INTERNATIONAL AIRPORT






Source: Jacobs Facilities, Inc., July 2002

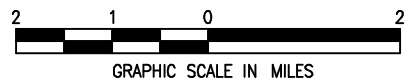


Figure 1-6: Region of Influence



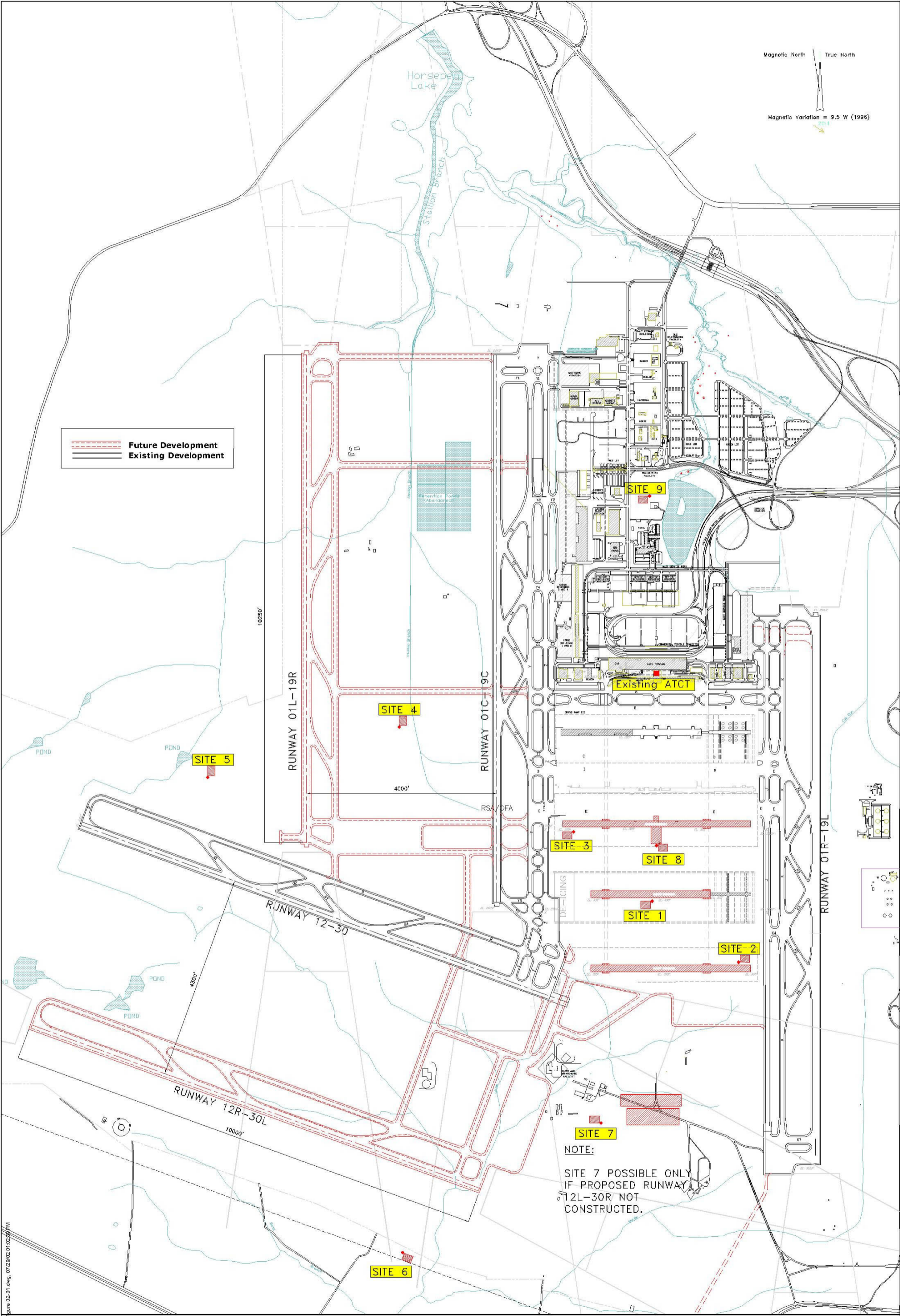
LEGEND

-  WASHINGTON DULLES INTERNATIONAL AIRPORT
-  REGION OF INFLUENCE
-  ROADS



Magnetic North True North
 Magnetic Variation = 9.5 W (1996)

Future Development
 Existing Development



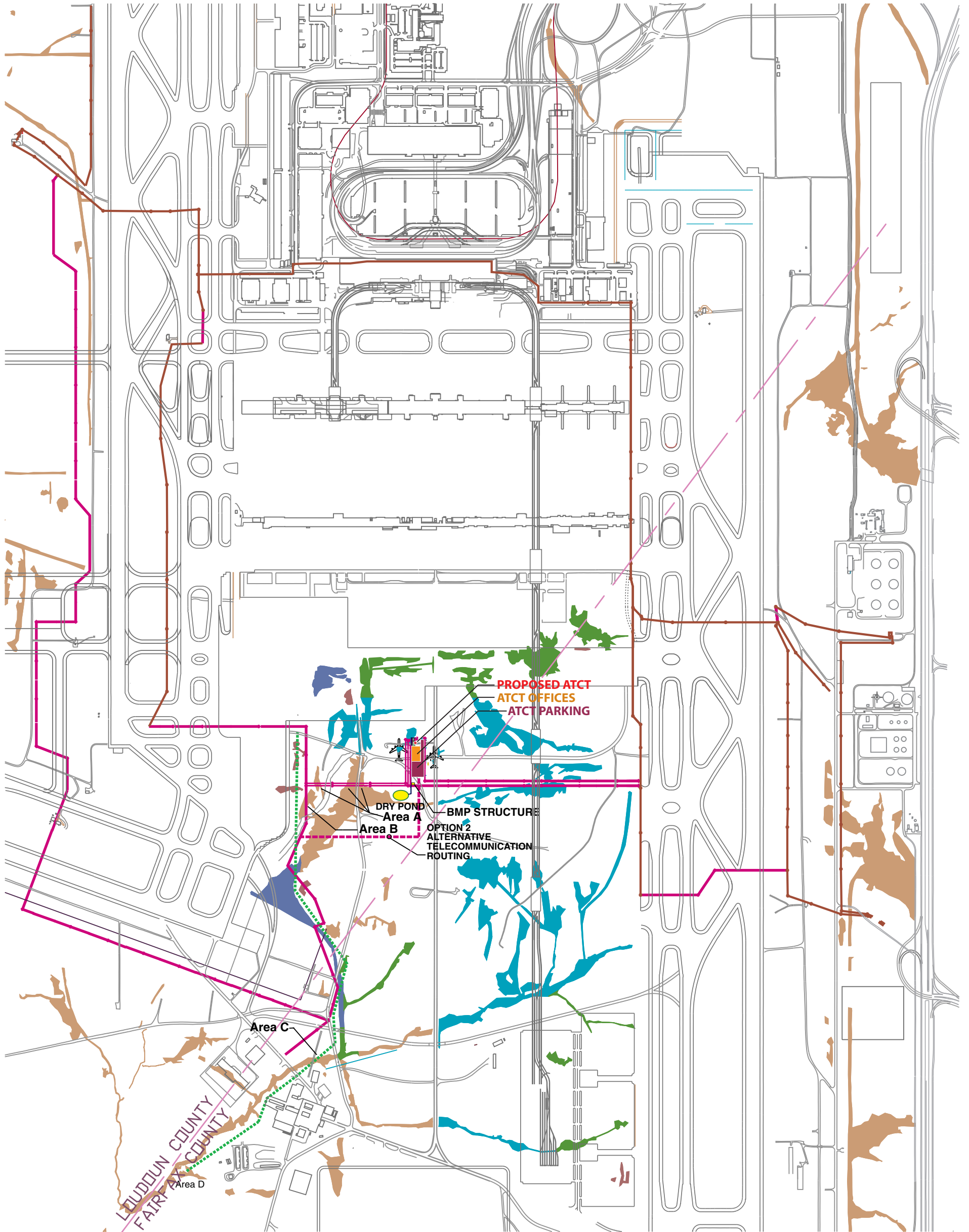
WASHINGTON DULLES INTERNATIONAL AIRPORT

AIRPORT TRAFFIC CONTROL TOWER SITING STUDY
 PRELIMINARY IDENTIFICATION AND ANALYSIS OF POTENTIAL SITES FOR NEW ATCT



Figure 2-2

Proposed Communications Ductbanks and Utility Corridors



- Wetland areas included in application for the N. Employee Parking Lot and Apron VI projects
- Wetland areas included in application for the Taxiway F and the South Employee Parking Lot projects
- Wetland areas included in application associated with the Tier 2 and related projects
- Wetlands confirmed Jurisdictional in 1997 for the NASM
- Intact and unpermitted wetlands

0 200 400 600 800 Ft.



- Proposed Communication Ductbank
- Option 2 Alternative Telecommunication Routing
- Existing Communication Ductbank
- Proposed Sanitary Sewer
- Stormwater

Figure 2-2

Source: MWA.
10/16/02

Figure 3-1

IAD General Location Map

WASHINGTON DULLES INTERNATIONAL AIRPORT



Figure 3-2: Contractor Staging Area

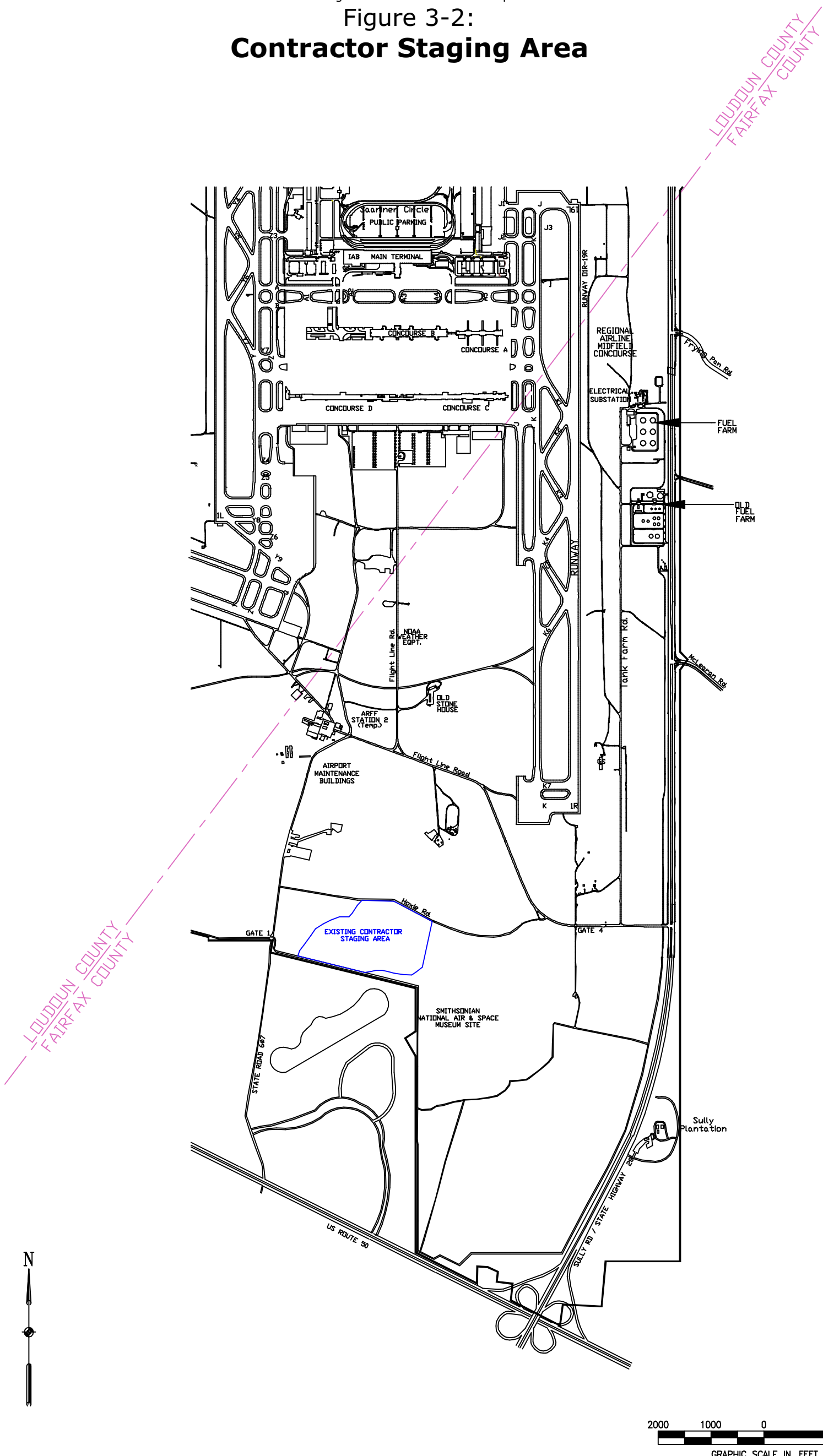


Figure 3-2

Figure 3-3: Soil Stockpile Area

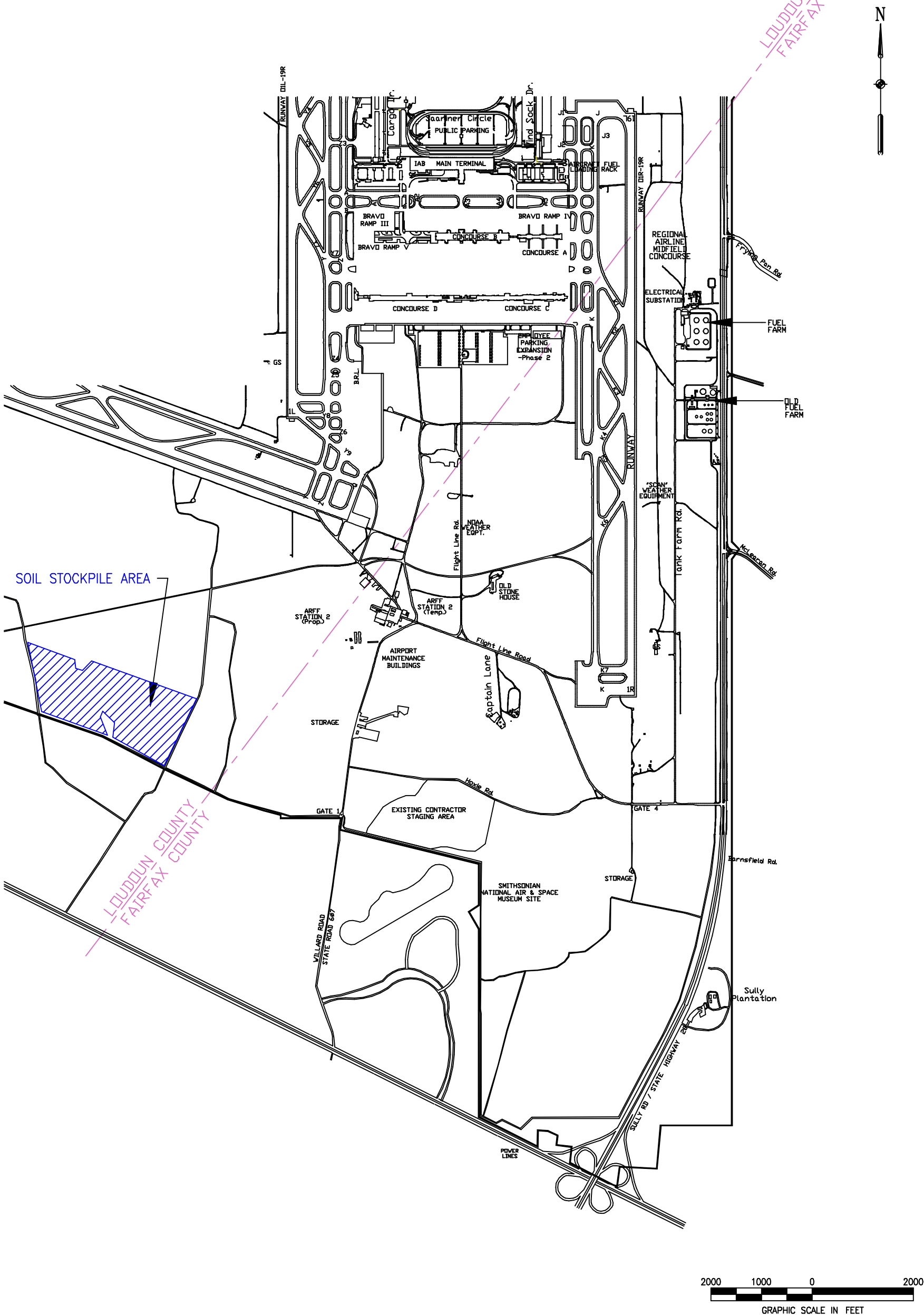


Figure 3-3

Figure 3-4: Future Planned Development Projects

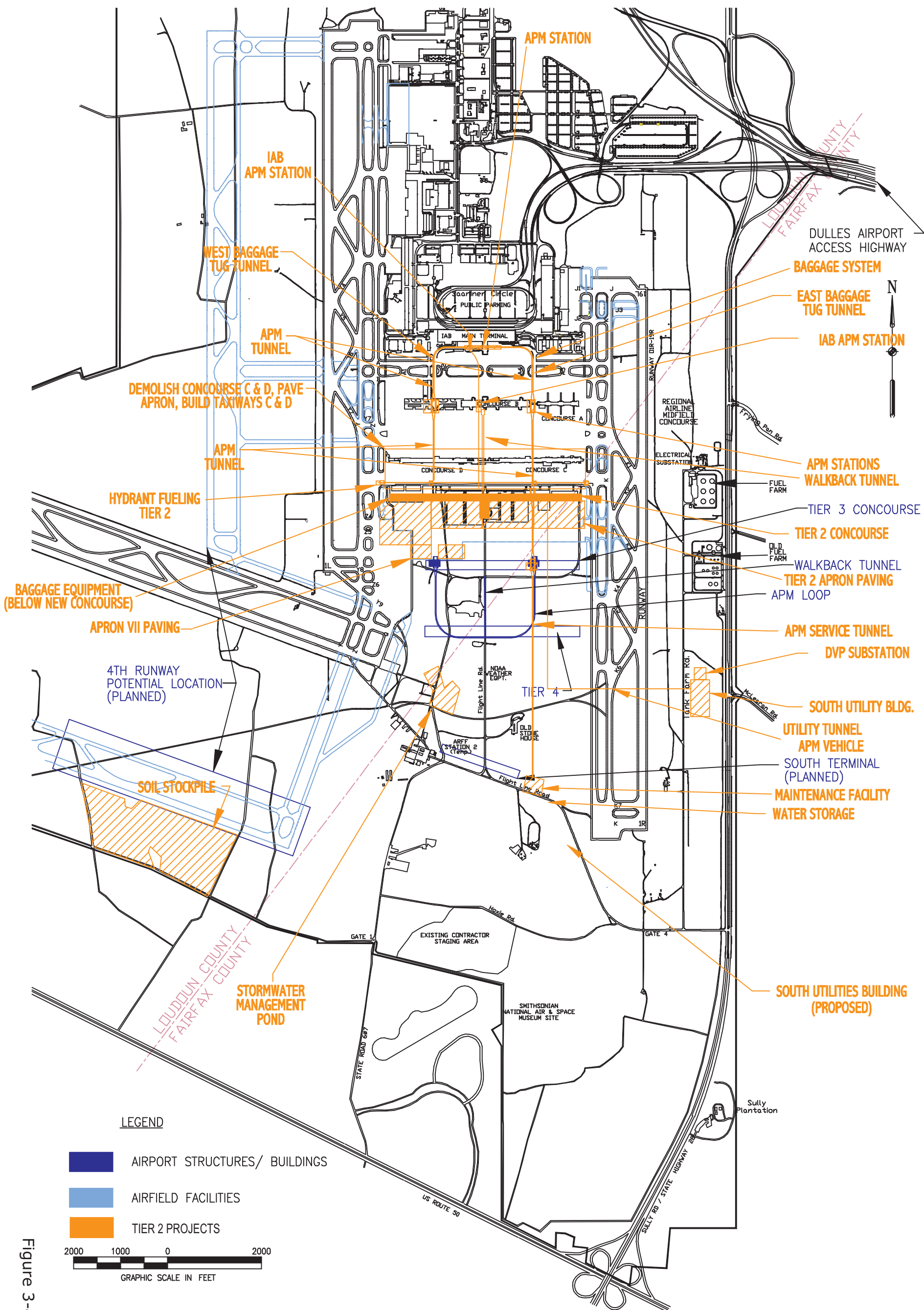


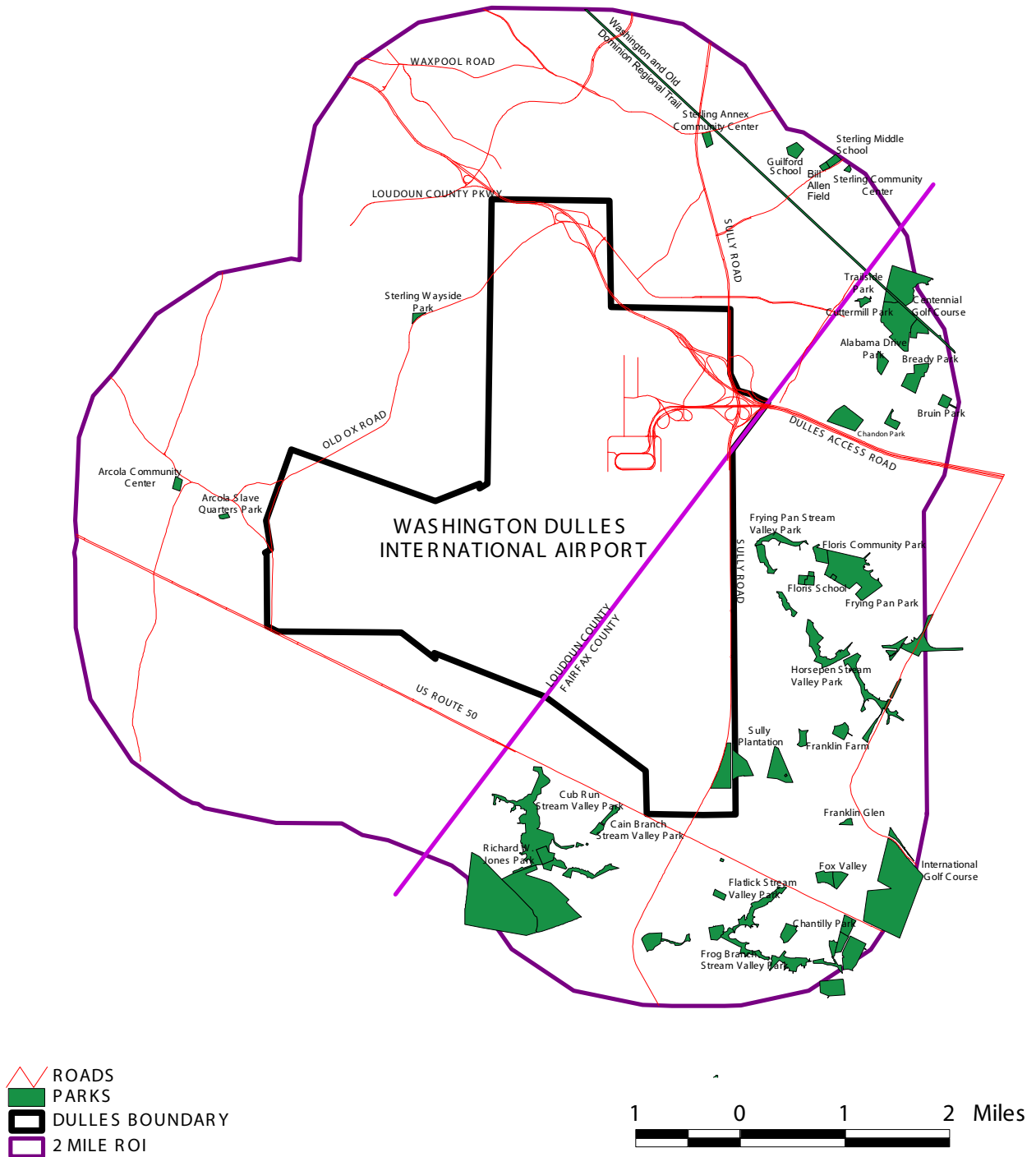
Figure 3-4

Figure 3-5:
**Areas Included in the Tier 2 and Related
Projects Joint Application Permit**



Figure 3-5

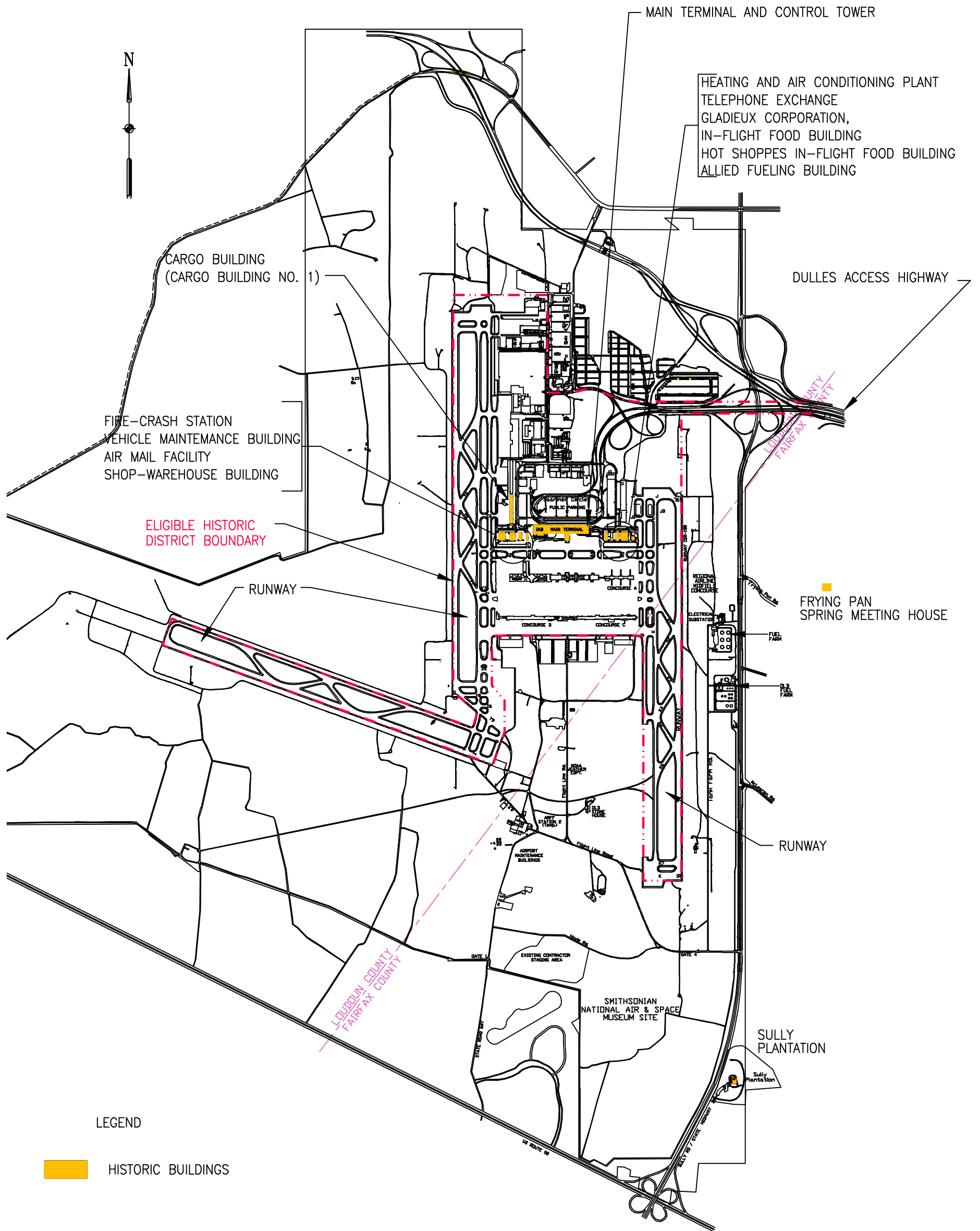
Figure 3-6: Public Parks within Region of Influence



Sources: Northern Virginia Planning Commission; ADC Maps of Northern Virginia and Loudoun County

Figure 3-7:

Historic Structures*



LEGEND

HISTORIC BUILDINGS

NOTE:
MOBILE LOUNGES AND TERMINAL
AREA LANDSCAPING ARE NOT SHOWN
ON THIS MAP.

SOURCE: PARSONS MANAGEMENT CONSULTANTS 1989

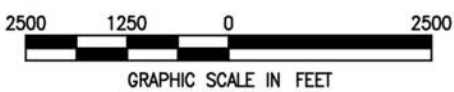
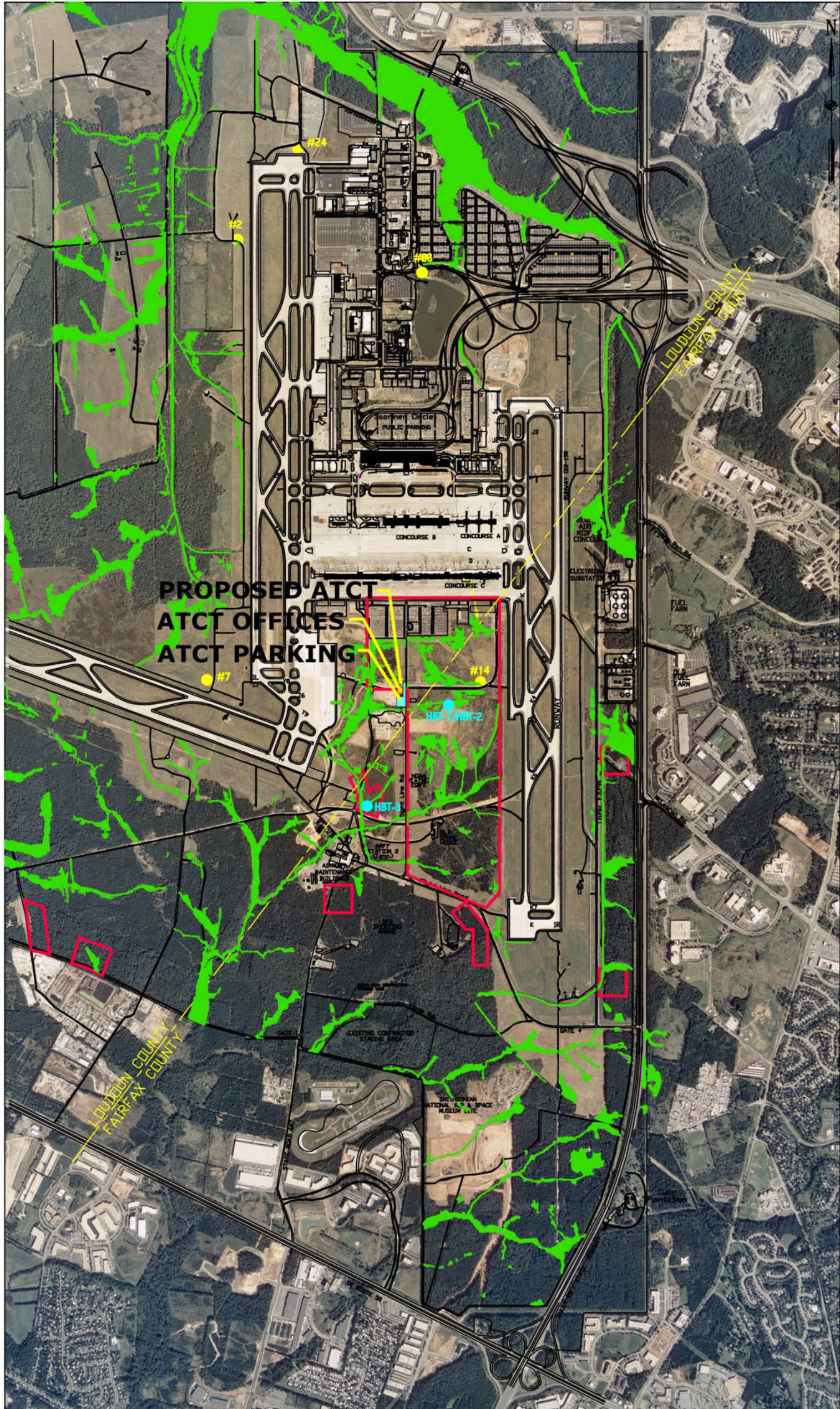


Figure 3-7

*Also includes structures that meet National Register Criteria within region of influence
Source: Tier 2 and Related Projects Draft Environmental Assessment, Washington Dulles International Airport (EA Engineering, Science, and Technology, Inc. (September 2001))

Figure 3-8

Rare, Threatened, or Endangered Species Surveys



- LEGEND
- DELINEATED WETLANDS
 - SURVEYED AREAS
 - HISTORIC UPLAND SANDPIPER OBSERVATIONS
 - HAIRY BEARDTONGUE OBSERVATIONS
 - EQUIVALENT TO 2 ACRES

Figure 3-8

Source: Tier 2 and Related Projects Draft Environmental Assessment, Washington Dulles International Airport (EA Engineering, Science, and Technology, Inc. (September 2001))

Figure 3-9: 100-Year Floodplains

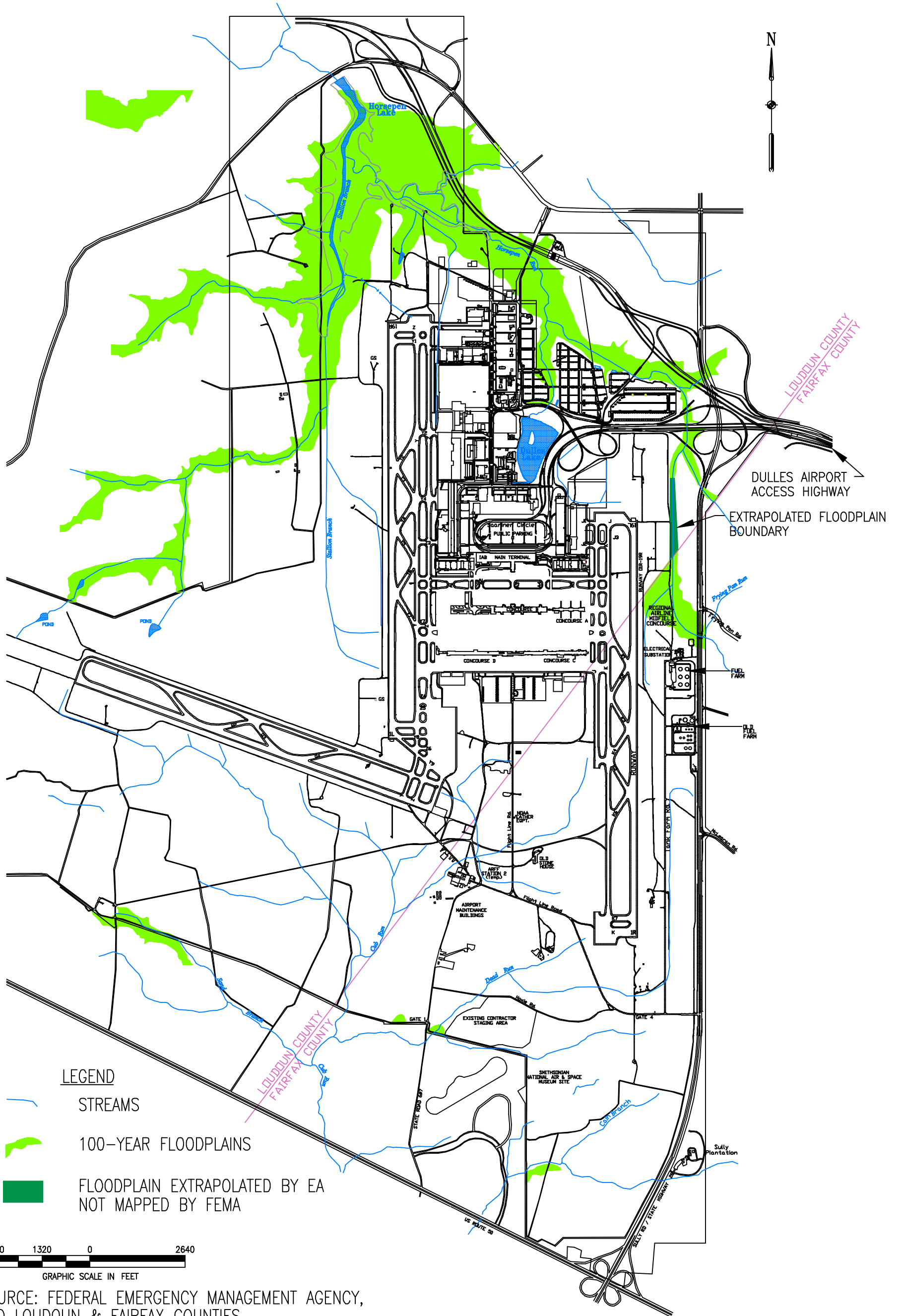


Figure 3-9

SOURCE: FEDERAL EMERGENCY MANAGEMENT AGENCY,
AND LOUDOUN & FAIRFAX COUNTIES

Figure 3-10:
Areas of Airport with Potential for Prehistoric Sites

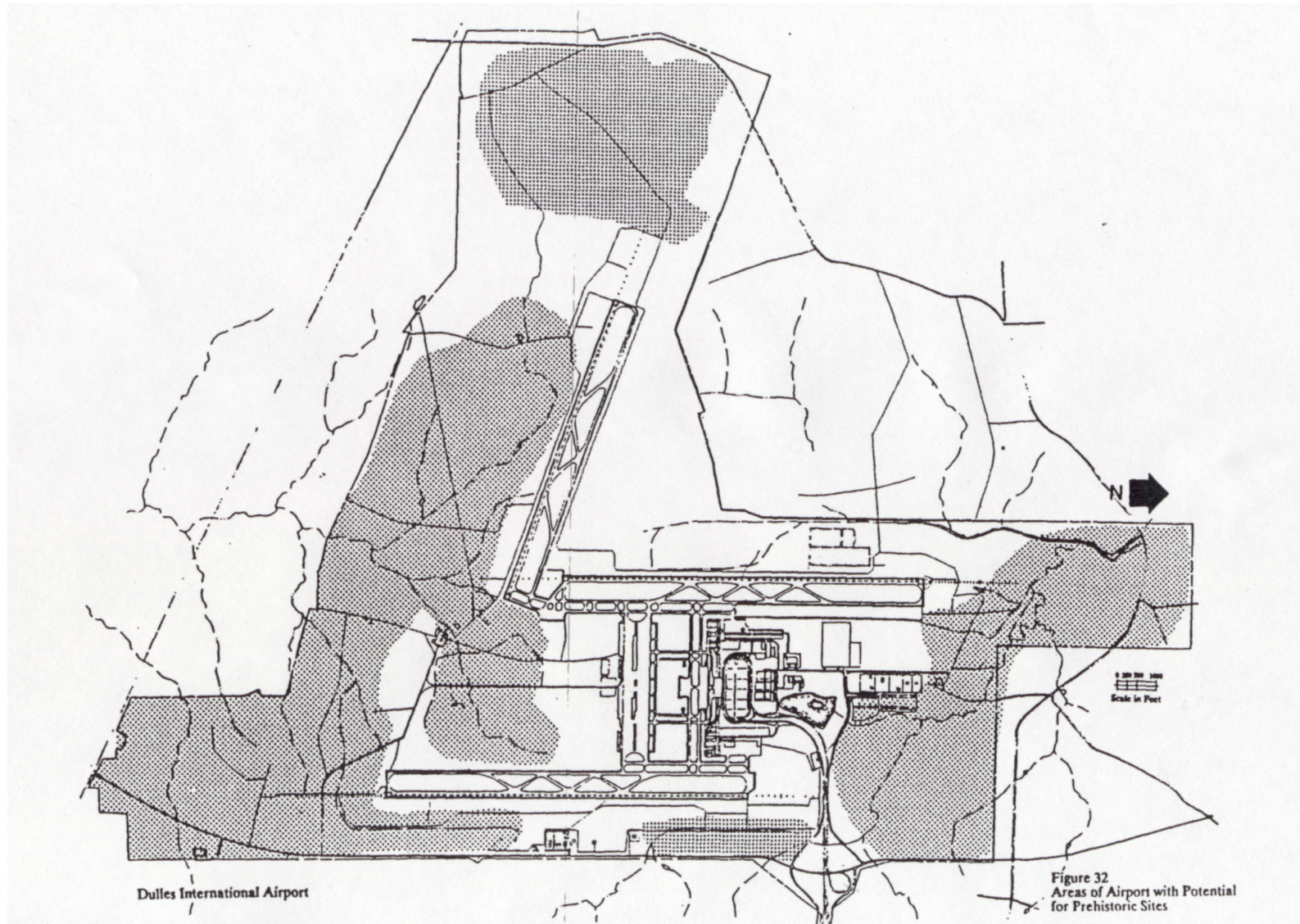


Figure 3-11

Visual Impact Analysis of Proposed ATCT with Respect to Viewscapes of the Saarinen Terminal Complex Approaches

Location of Analysis Viewpoints

WASHINGTON DULLES INTERNATIONAL AIRPORT

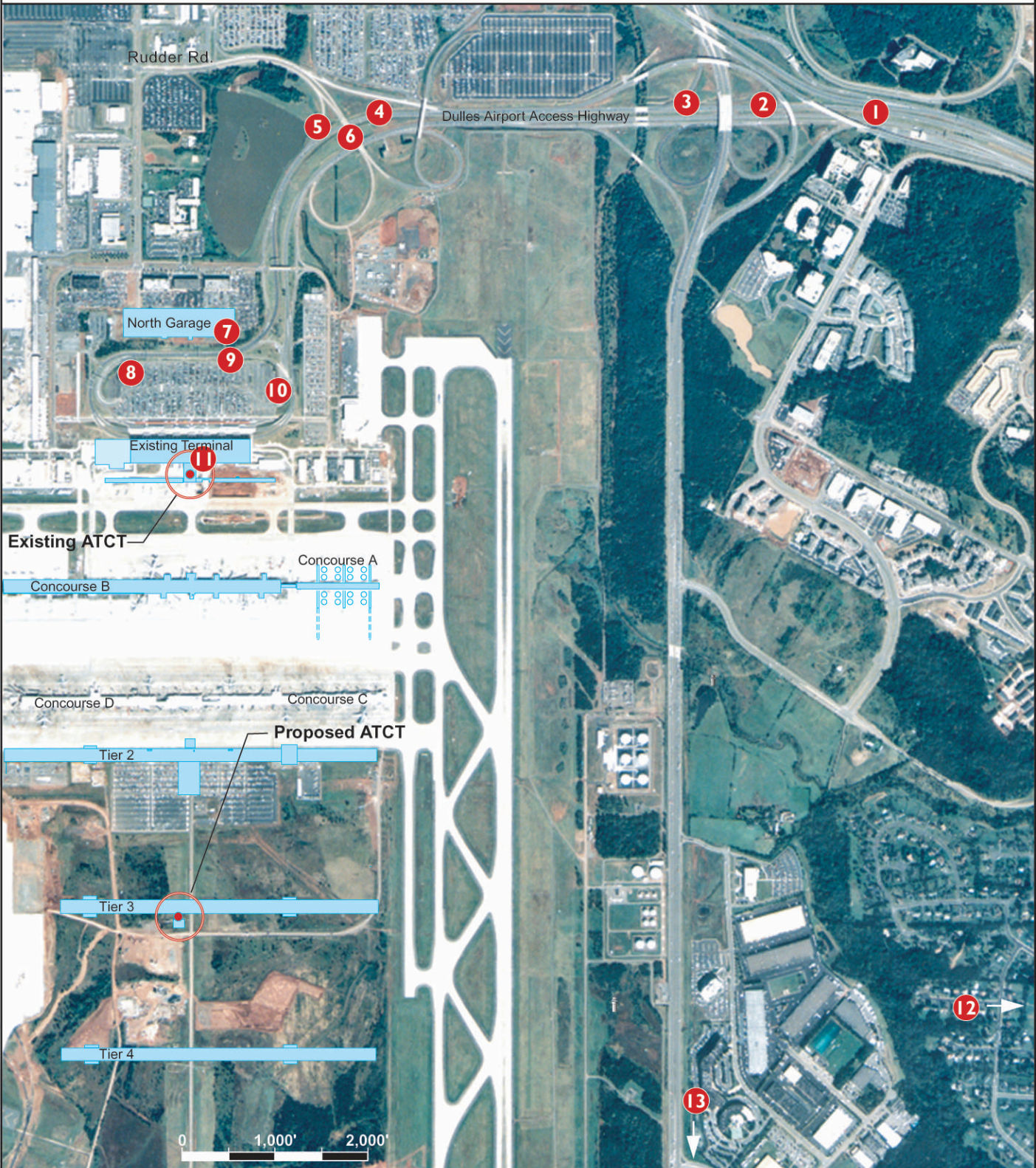


Figure 3-12

Visual Impact Analysis of Proposed ATCT Facility with Respect to Viewscapes from Points East of Rte. 28 on the Dulles Airport Access Highway

Viewpoints 1 and 2

WASHINGTON DULLES INTERNATIONAL AIRPORT

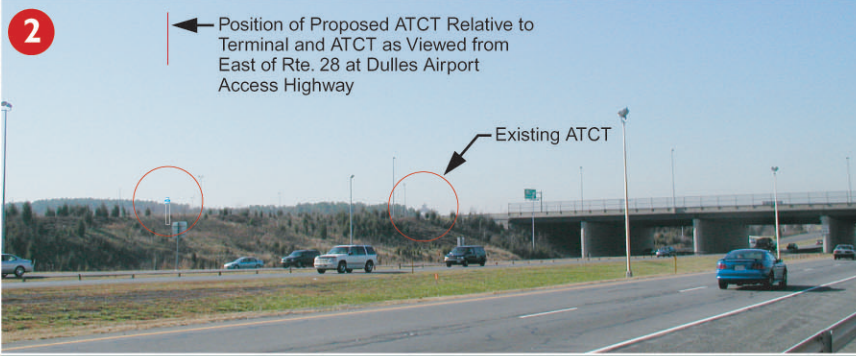
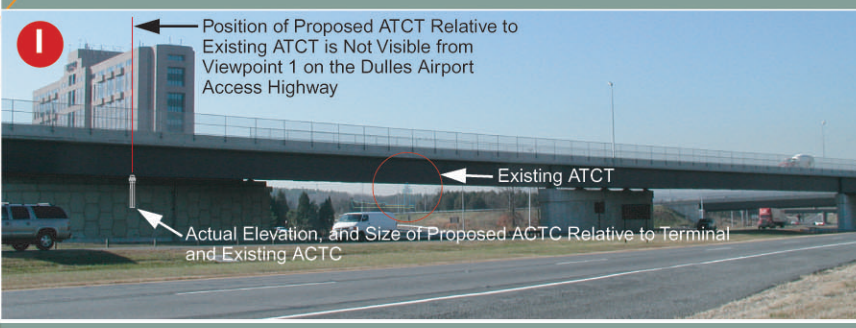


Figure 3-13

Visual Impact Analysis of Proposed ATCT Facility with Respect to Viewscapes from Points East of Rudder Rd. on the Dulles Airport Access Highway

Viewpoints 3 and 4

WASHINGTON DULLES INTERNATIONAL AIRPORT

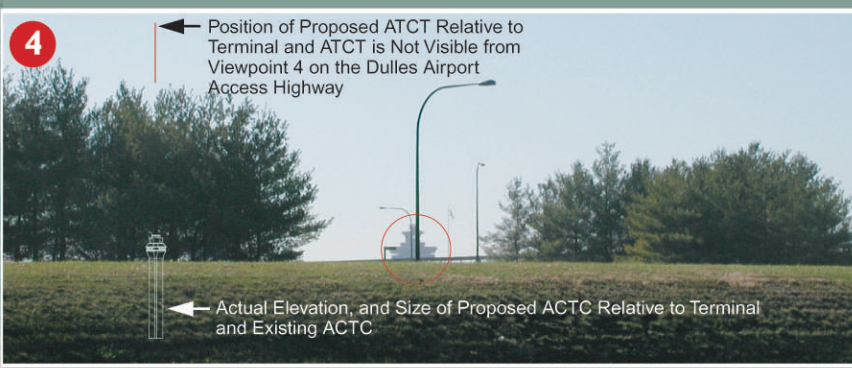
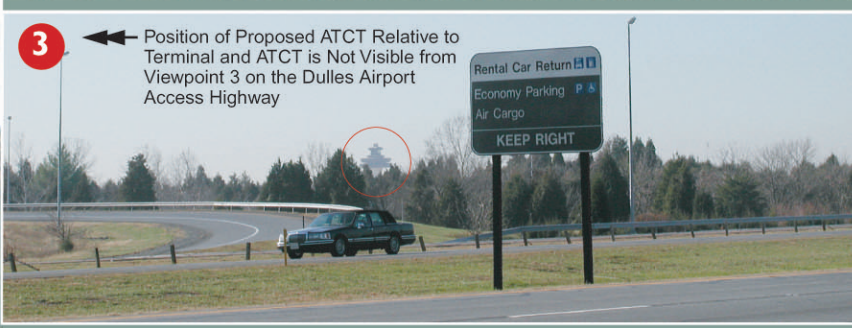


Figure 3-14

Visual Impact Analysis of Proposed ACTC Facility with Respect to Viewscapes from Rudder Rd. interchange with Dulles Airport Access Highway

Viewpoints 5 and 6

WASHINGTON DULLES INTERNATIONAL AIRPORT

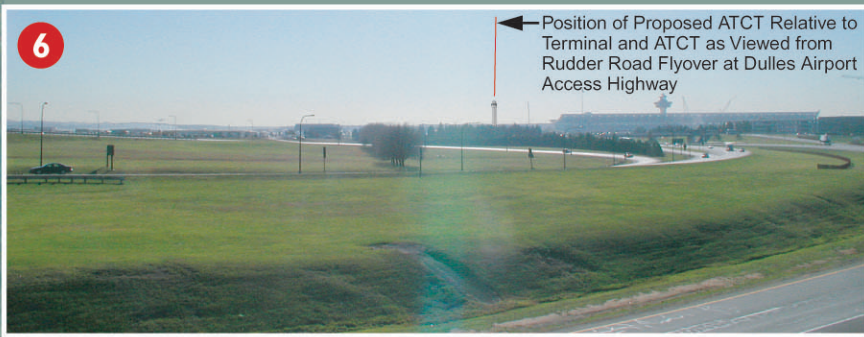
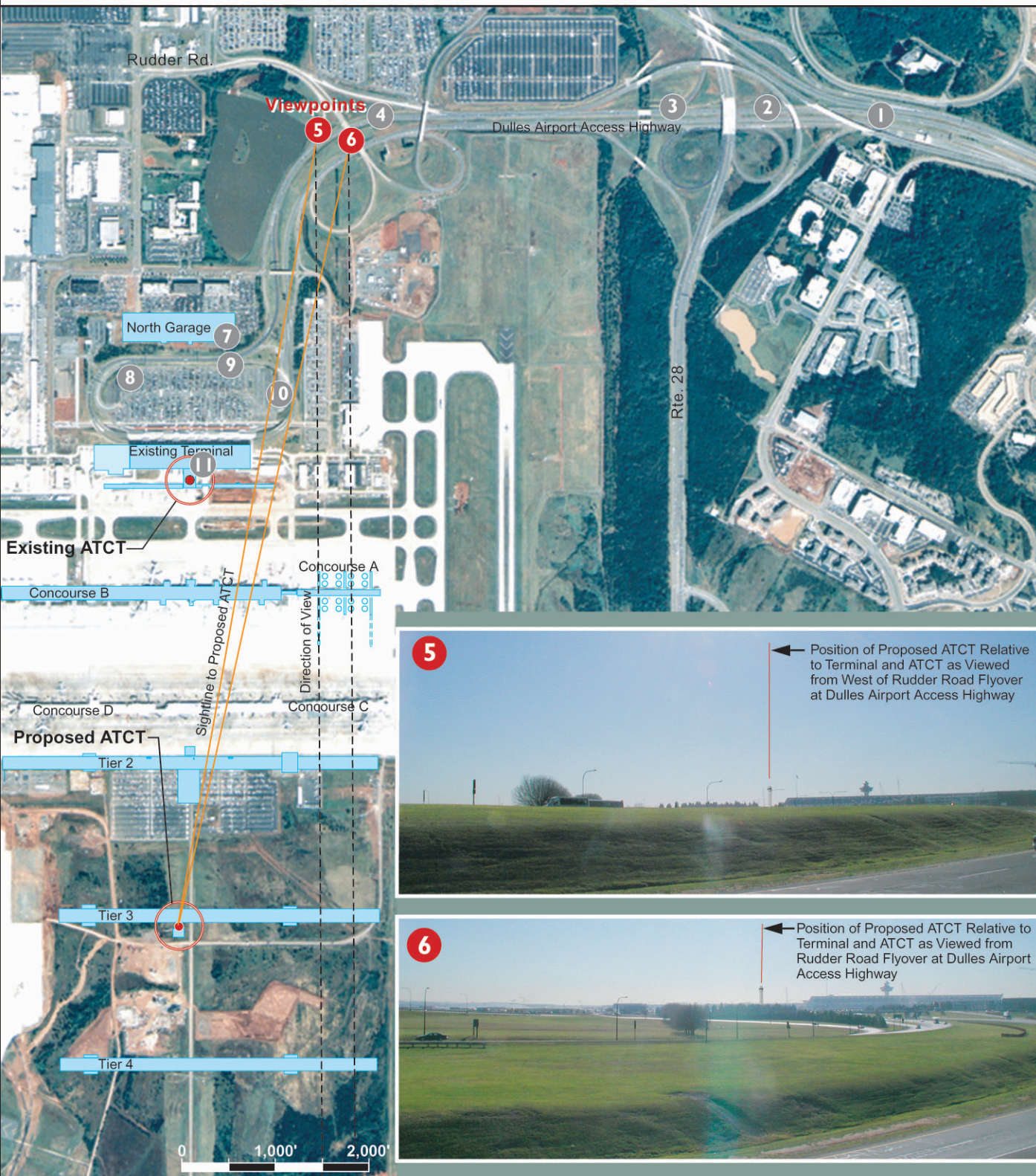


Figure 3-15

Visual Impact Analysis of Proposed ATCT with Respect to Viewscapes from New North Garage and from Interior of Existing Terminal

Viewpoints 7 and 11 (Terminal and North Garage)

WASHINGTON DULLES INTERNATIONAL AIRPORT



Figure 3-16

Visual Impact Analysis of Proposed ATCT Facility with Respect to Viewscapes of the Saarinen Terminal Approaches

Viewpoints 8, 9, and 10

WASHINGTON DULLES INTERNATIONAL AIRPORT

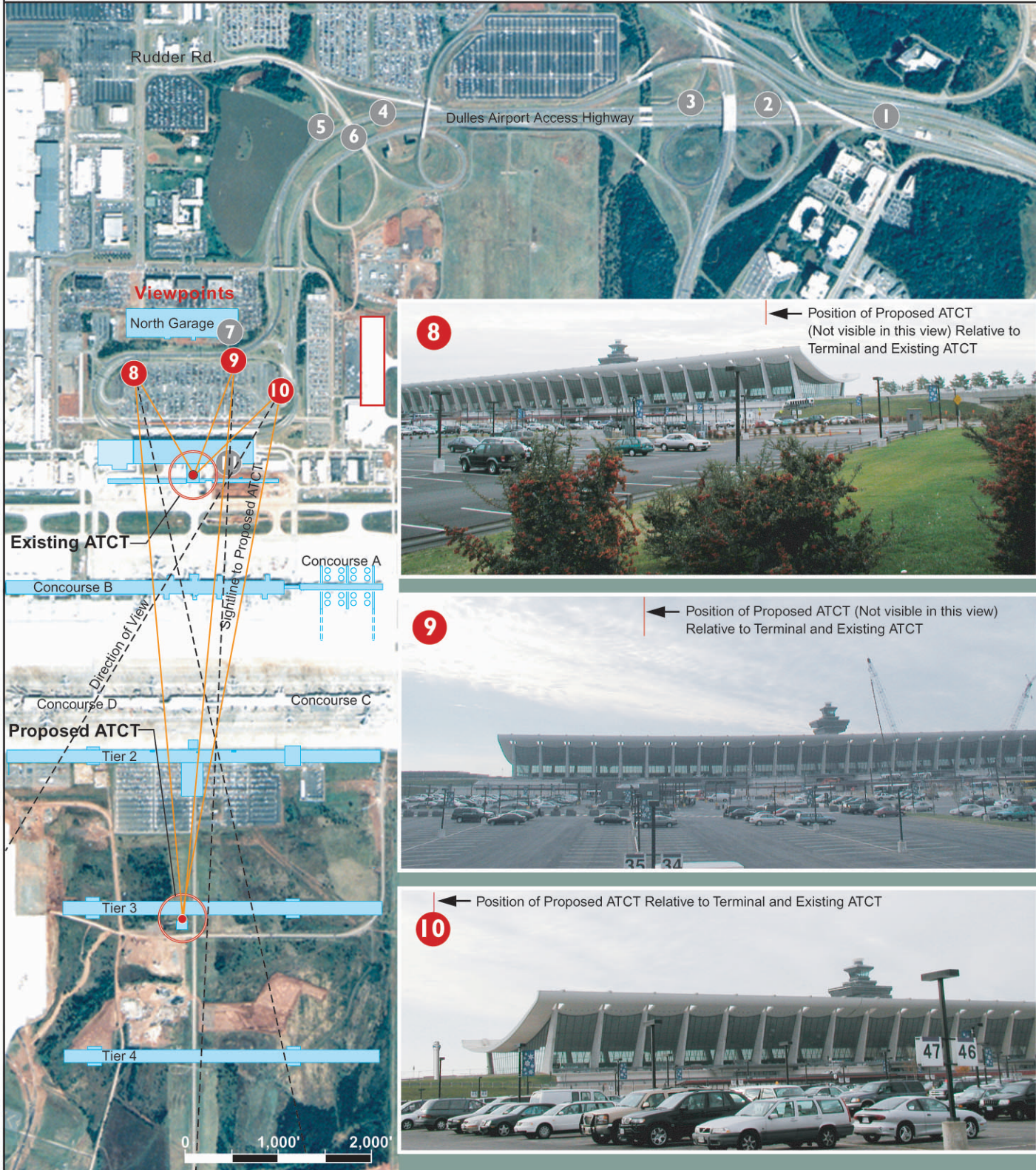


Figure 3-17

Visual Impact Analysis of Proposed ATCT with Respect to the Frying Pan Park Viewscape

Viewpoint 12 (Frying Pan Park)

WASHINGTON DULLES INTERNATIONAL AIRPORT

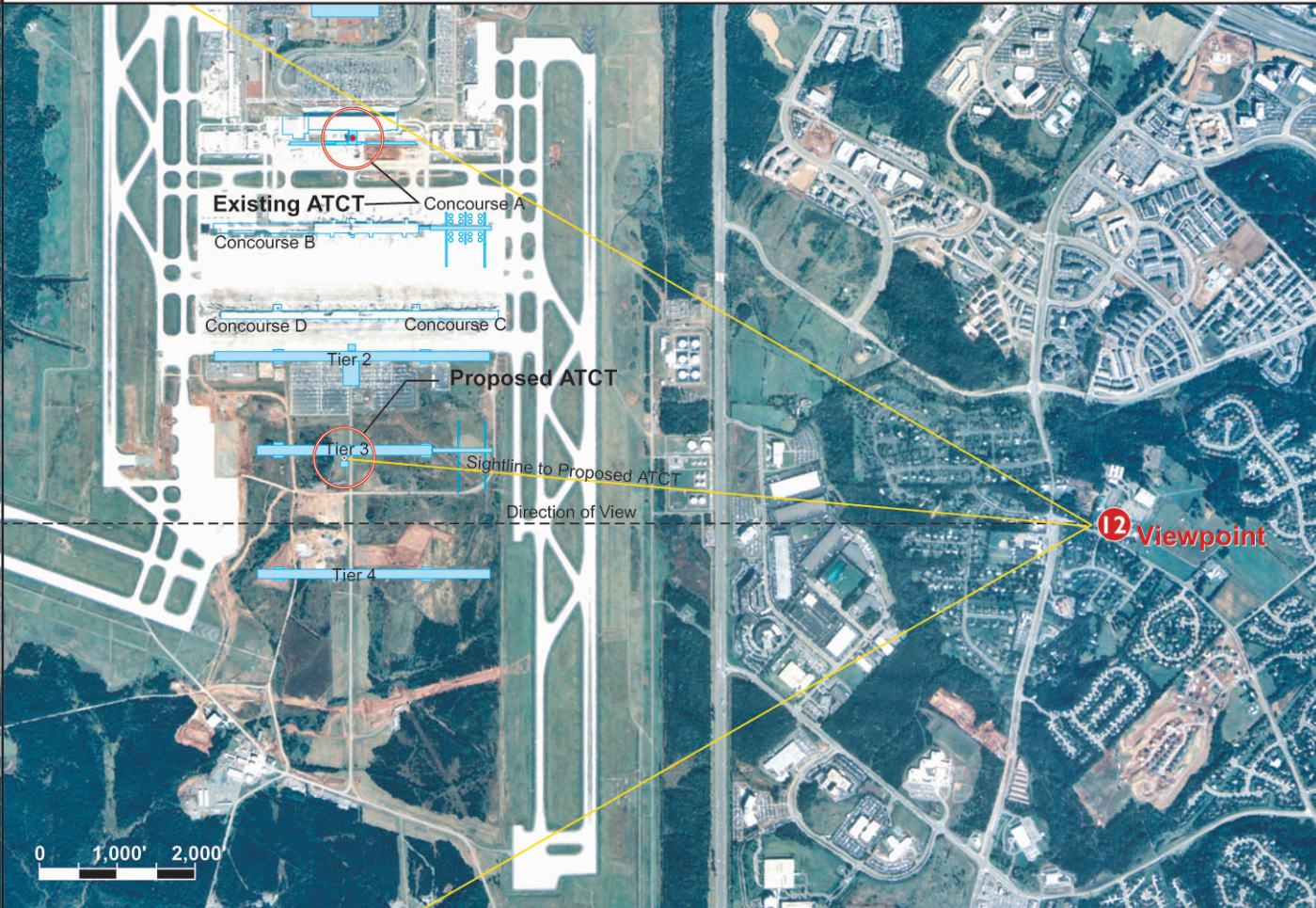


Figure 3-18

Visual Impact Analysis of Proposed ATCT with Respect to the Sully Plantation Viewscape

Viewpoint 13 (Sully Plantation)

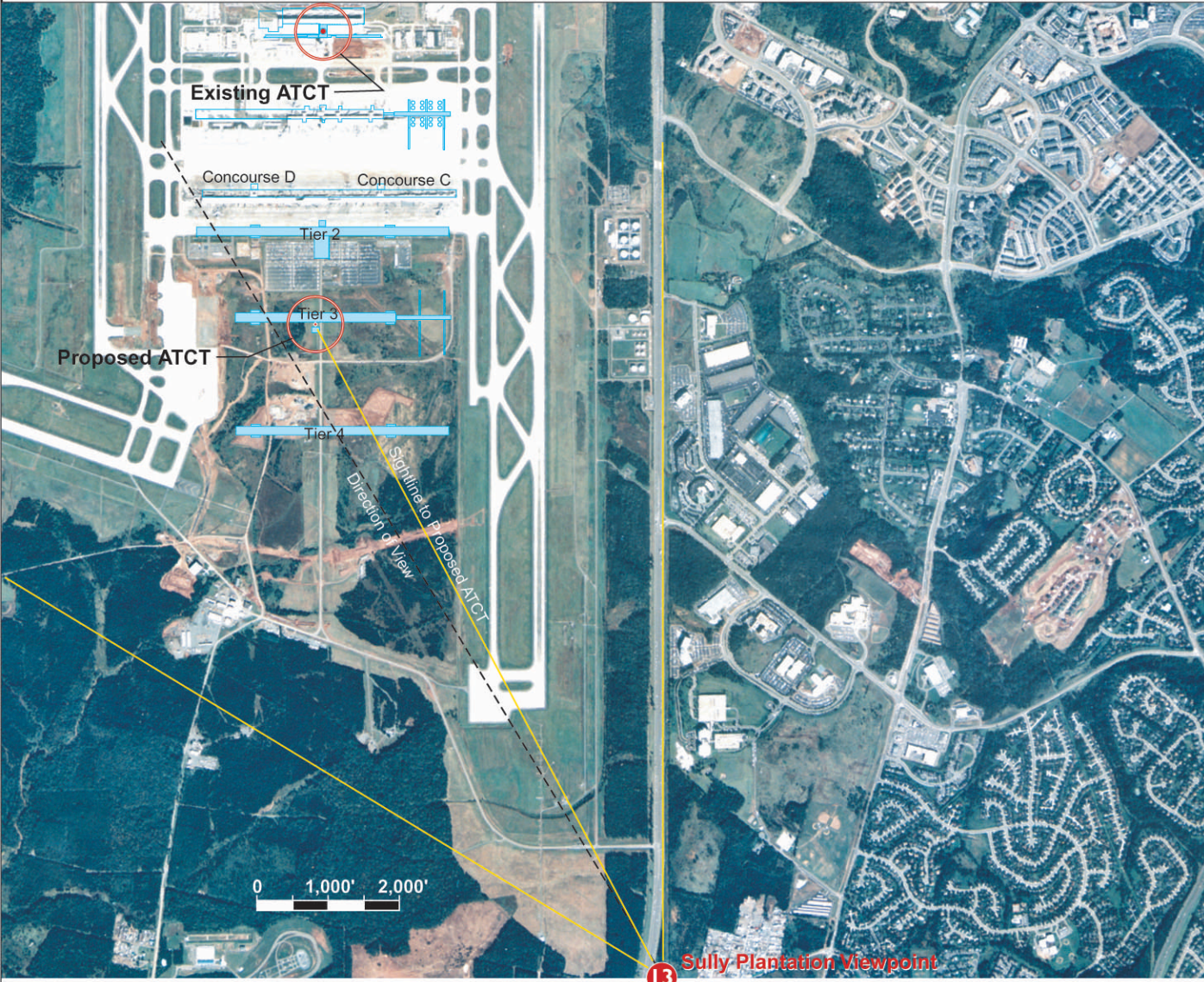





Figure 3-19

1998 Noise Contour Map

WASHINGTON DULLES INTERNATIONAL AIRPORT



LEGEND

-  WASHINGTON DULLES INTERNATIONAL AIRPORT
-  1998 NOISE CONTOURS
-  ROADS

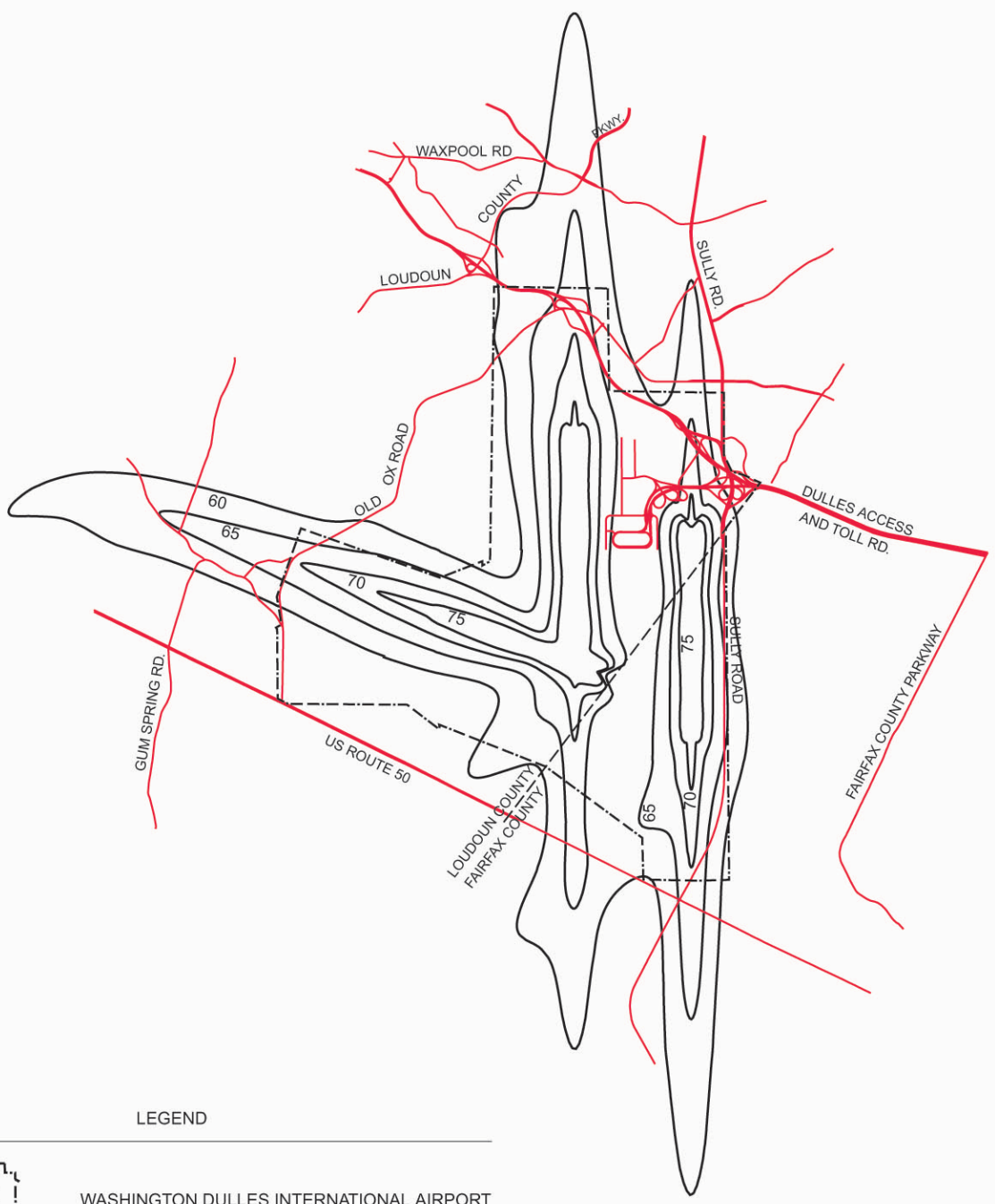


SOURCE: HNTB




Figure 3-20

Projected 2007 Noise Contour Map

WASHINGTON DULLES INTERNATIONAL AIRPORT



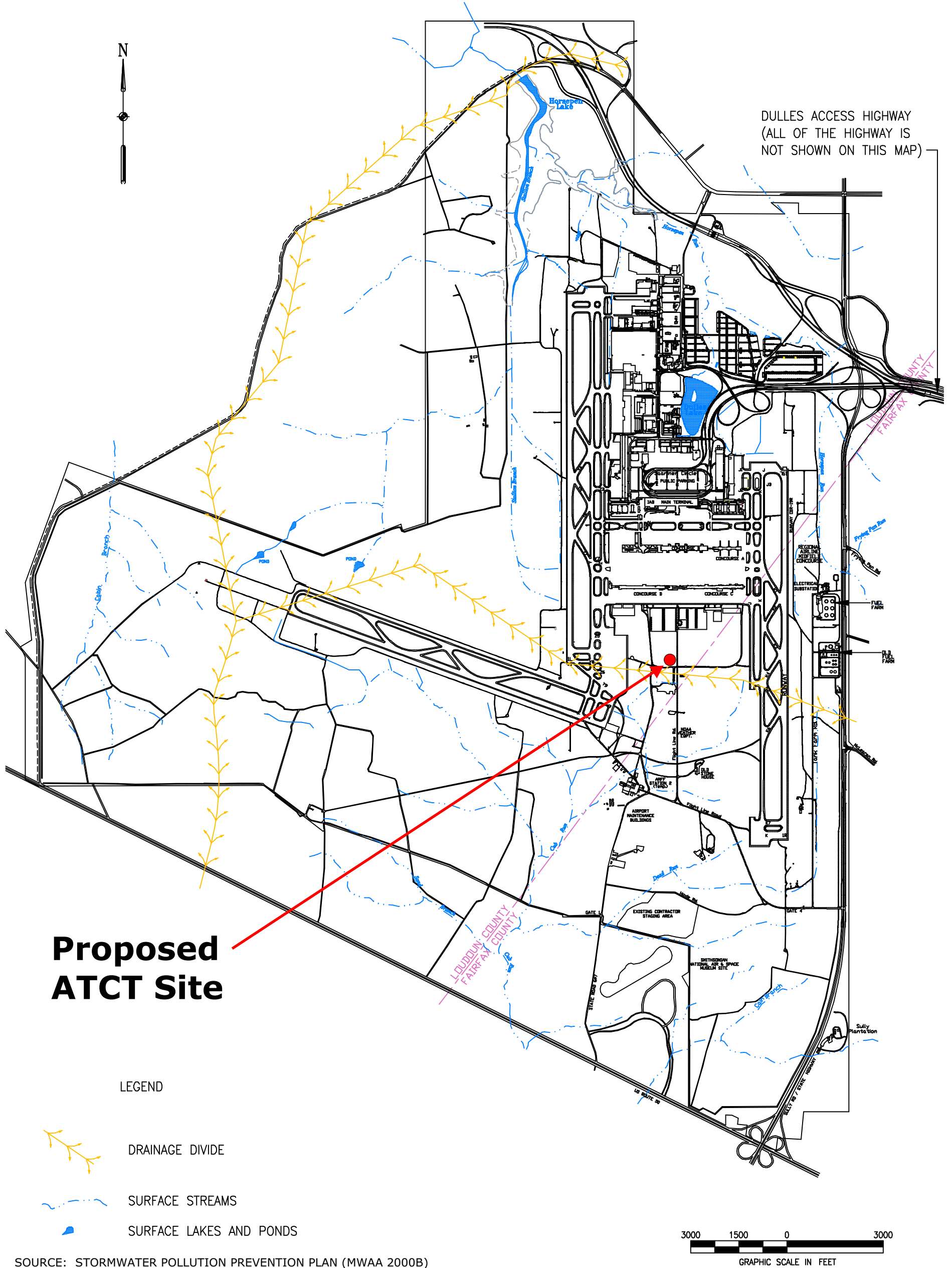
LEGEND

-  WASHINGTON DULLES INTERNATIONAL AIRPORT
-  2007 NOISE CONTOURS
-  ROADS



SOURCE: HNTB

Figure 3-21: Surface Water Drainage



SOURCE: STORMWATER POLLUTION PREVENTION PLAN (MWA 2000B)

Figure 3-21

Figure 3-22

Stormwater Management

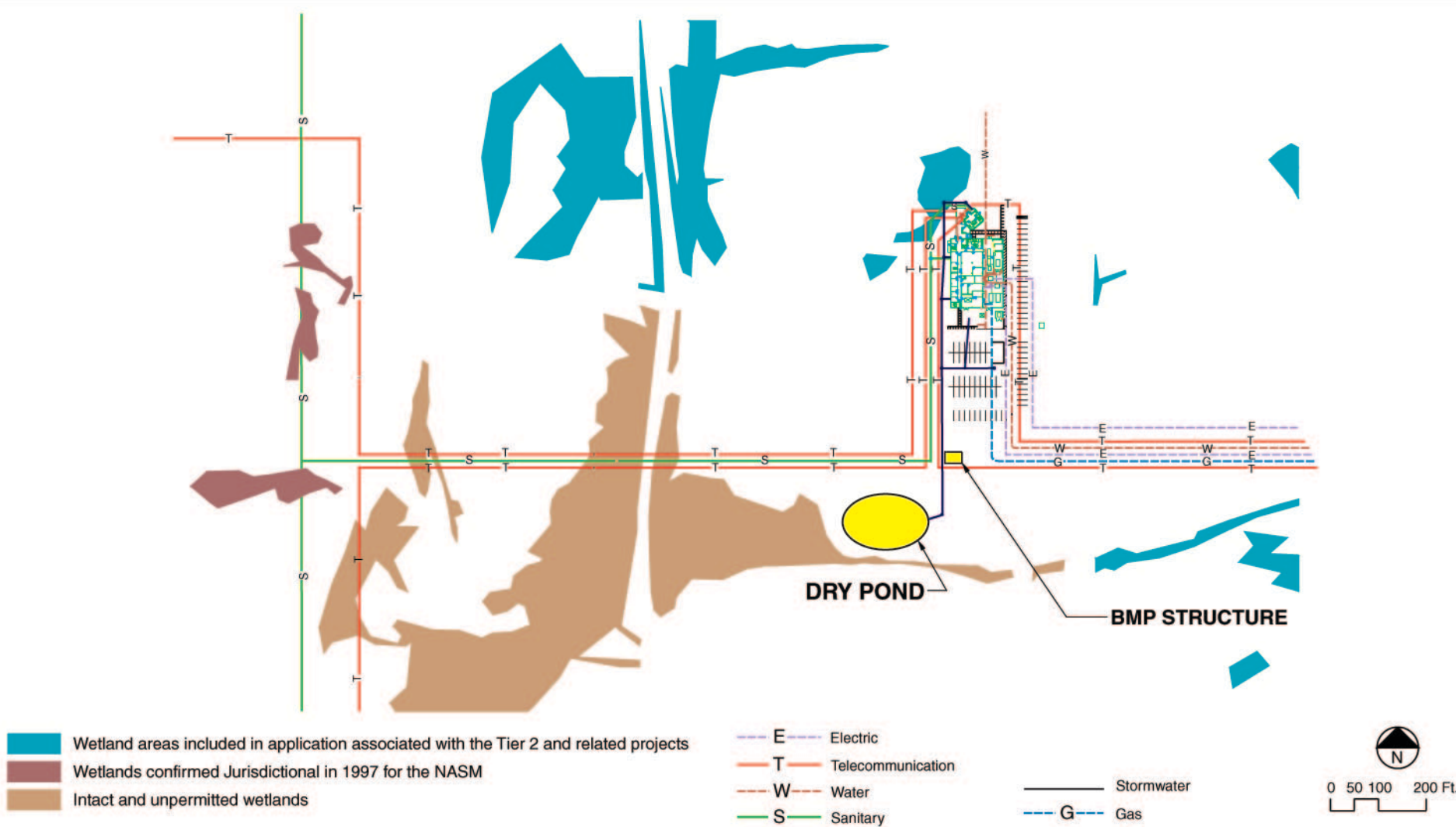


Figure 3-23:
Wetlands

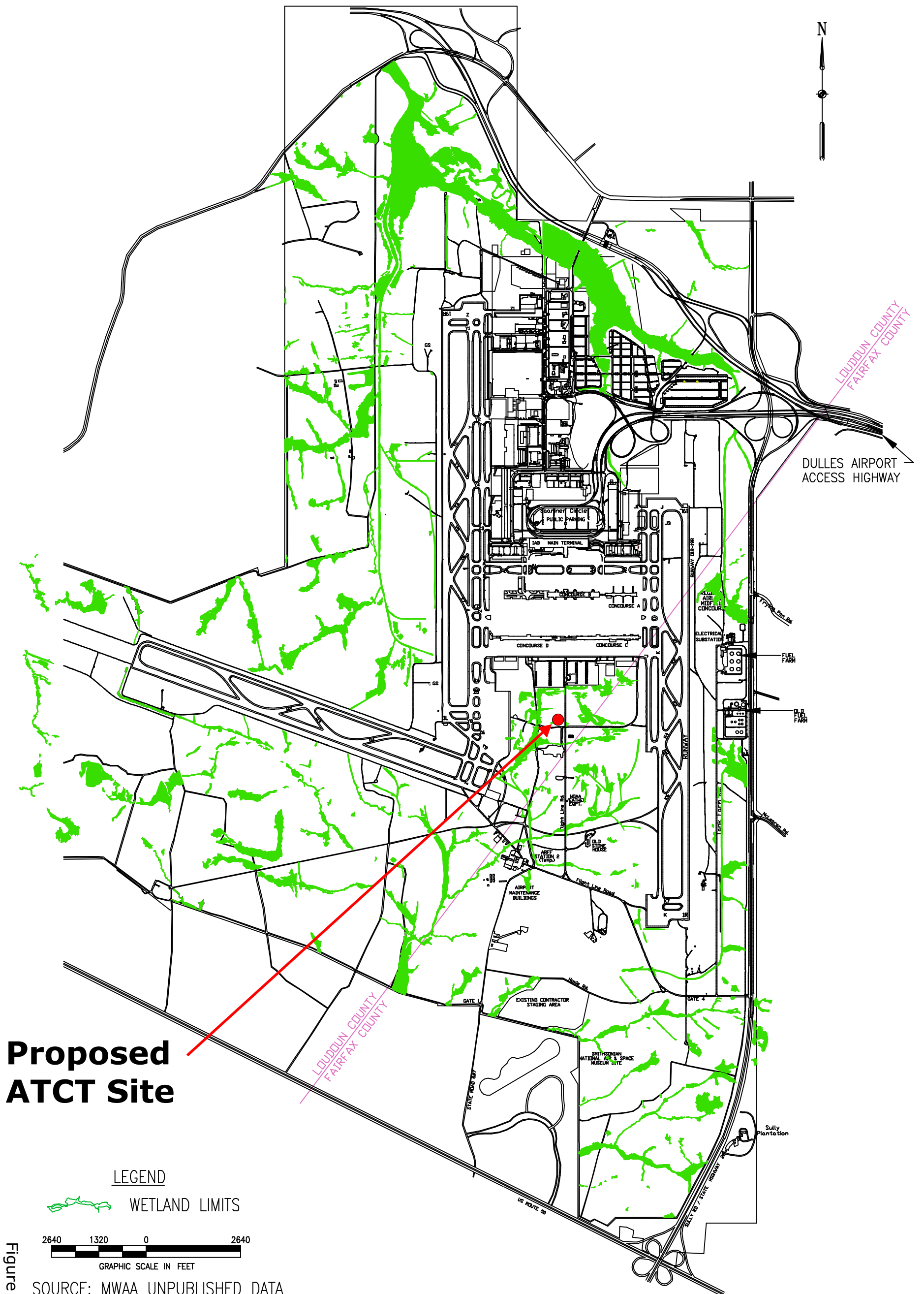
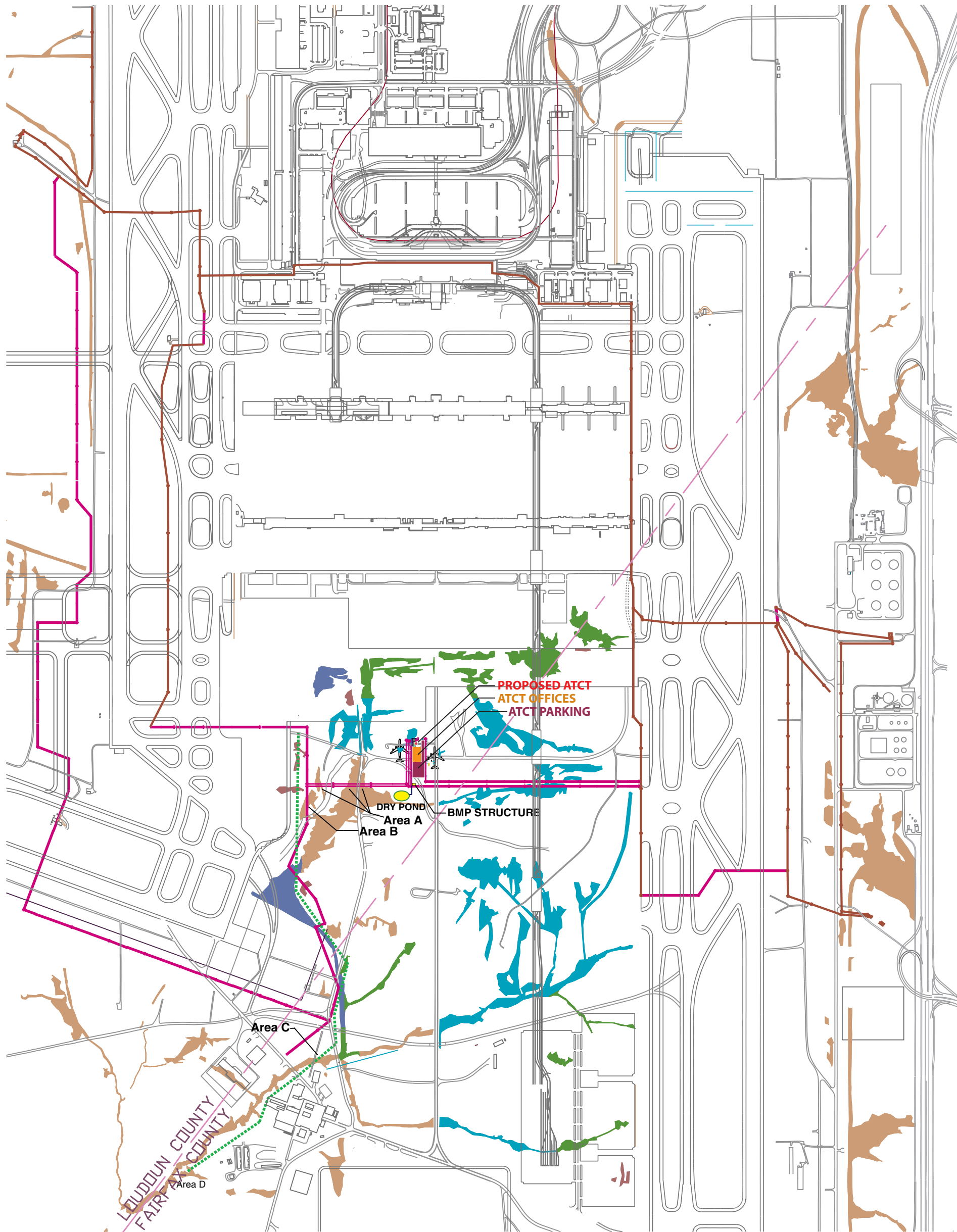


Figure 3-23

Source: Tier 2 and Related Projects Draft Environmental Assessment, Washington Dulles International Airport (EA Engineering, Science, and Technology, Inc. (September 2001))

Figure 3-24

Wetlands in the Proposed ATCT Area



- Wetland areas included in application for the N. Employee Parking Lot and Apron VI projects
- Wetland areas included in application for the Taxiway F and the South Employee Parking Lot projects
- Wetland areas included in application associated with the Tier 2 and related projects
- Wetlands confirmed Jurisdictional in 1997 for the NASM
- Intact and unpermitted wetlands

0 200 400 600 800 Ft.



- Proposed Communication Ductbank
- Existing Communication Ductbank
- Proposed Sanitary Sewer
- Stormwater

Figure 3-24

Source: MWAA.
10/16/02