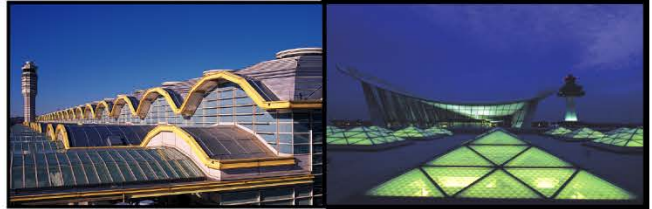


November
2014

Air Traffic Statistics



METROPOLITAN WASHINGTON AIRPORTS AUTHORITY



Metropolitan Washington Airports Authority

Air Traffic Statistics

Table of Contents

Summary

Air Traffic Summary	1
SH&E Air Traffic Schedule Activity.....	3
Passenger Trends.....	5
Total Passengers 4-Year Comparison - DCA, IAD, BWI.....	6
Total Commercial Passenger Enplanements.....	7
Market Share and Percentage of Top Airlines - DCA, IAD, BWI.....	9

Air Traffic Statistics - DCA

Monthly Air Traffic Summary – Current Month.....	10
Monthly Air Traffic Summary – Year-to-Date	12
Monthly Air Traffic Summary – Last 12 Months	14

Air Traffic Statistics - IAD

Monthly Air Traffic Summary – Current Month.....	16
Monthly Air Traffic Summary – Year-to-Date	18
Monthly Air Traffic Summary – Last 12 Months	20

Air Traffic Summary November 2014

		Passenger Activity (in Millions)								
		Current Month			Year-to-Date			Last 12 Months		
		DCA	IAD	System	DCA	IAD	System	DCA	IAD	System
Commercial Total	Passengers	1.7	1.6	3.3	19.1	19.8	38.9	20.7	21.6	42.3
	% Change	6.0%	(1.6%)	2.1%	1.4%	(1.7%)	(0.2%)	1.7%	(1.7%)	(0.1%)
Commercial Dom	Passengers	1.7	1.1	2.8	18.7	13.1	31.8	20.3	14.3	34.6
	% Change	6.1%	(1.7%)	2.8%	1.5%	(3.6%)	(0.7%)	1.7%	(3.6%)	(0.5%)
Commercial Int'l	Passengers	< 0.1	0.5	0.5	0.4	6.6	6.9	0.4	7.1	7.5
	% Change	(2.5%)	(1.3%)	(1.4%)	(1.9%)	2.2%	2.0%	(1.9%)	2.4%	2.2%

Note: System totals may not sum due to rounding.

U.S. industry average passenger enplanements as reported by Airlines for America (A4A):

Enplanements	Current Month	Year-to-Date
System	4.0%	2.8%
Domestic	4.4%	2.8%
International	1.3%	3.1%

Ronald Reagan Washington National Airport

- Domestic commercial passenger activity increased 6.1% in November 2014 compared to November 2013. Significant activity by carrier follows:

Airline	Comments
American + US Airways	<ul style="list-style-type: none"> 10.0% decrease from November 2013 in passenger activity due to slot divestitures in June and July 2014 Increased service to Boston in March 2014; Hartford, Los Angeles, and St. Louis in June 2014; and Columbus and Providence in September 2014
Southwest + AirTran	<ul style="list-style-type: none"> 149.5% increase in passenger activity as slots divested by American were taken over by Southwest New service to Kansas City in March 2014; Chicago Midway, Nashville, and New Orleans in August 2014; Dallas-Love and Tampa in October 2014; and Akron and Indianapolis in November 2014 Increased service to Houston and St. Louis in November 2014
Delta	<ul style="list-style-type: none"> 17.0% increase in passenger activity Reduced service to Memphis in January 2014 New service to Madison and Omaha in February 2014 Increased service to Minneapolis in March 2014 and LaGuardia in November 2014
JetBlue	<ul style="list-style-type: none"> 26.2% increase in passenger activity as JetBlue began utilizing slots divested by American New service to Charleston and Hartford in June 2014 Increased service to Tampa in July 2014

- Transborder passenger traffic decreased 2.5% in November as a result of discontinued service to Montreal on American + US Airways in June 2014.
- The combined American + US Airways operations, including its regional affiliates, had the largest commercial passenger market share with 49.8%, a decrease compared to 59.0% in November 2013.

Washington Dulles International Airport

Domestic Passenger Activity

- Domestic commercial passenger activity declined 1.7% in November 2014. Significant activity by carrier follows:

Airline	Comments
United	<ul style="list-style-type: none">• 9.2% decrease in passenger activity• Discontinued service to Salt Lake City in December 2013; Albuquerque in April 2014; Ft. Lauderdale in May 2014; Binghamton in June 2014; Miami and Colorado Springs in September 2014; and New York JFK in November 2014• Reduced service to Boston in December 2013; St. Louis, Grand Rapids, and Hunstville in June 2014; Cincinnati in July 2014; Cleveland in September 2014; and Buffalo, Dayton, Denver, La Guardia, Providence, Rochester, and San Francisco in November 2014• Increased service to Columbia in January 2014; San Antonio and Syracuse in March 2014; and Albany in April 2014
Frontier	<ul style="list-style-type: none">• New service to Atlanta, Charlotte, Minneapolis, Orlando, and Tampa in August 2014; Chicago O'Hare, Cincinnati, Detroit, Ft. Lauderdale, Fort Myers, Las Vegas, Memphis, St. Augustine, and St. Louis in September 2014; Cleveland in October 2014; and West Palm Beach in November 2014

International Passenger Activity

- November 2014 international commercial passenger traffic decreased 1.3%. Significant activity by carrier follows:

Airline	Comments
United	<ul style="list-style-type: none">• 10.3% decrease in passenger activity• Increased service to Aruba, Cancun, Guatemala, Montego Bay, Punta Cana, and St. Maarten in March 2014• Discontinued service to San Salvador in April 2014, and temporarily discontinued service to Rome in November 2014 for the winter season• Reduced service to Canadian destinations, Amsterdam, Manchester, and Zurich in November 2014
British Airways	<ul style="list-style-type: none">• 29.2% increase due to aircraft up-gauging in March 2014
TACA + Avianca	<ul style="list-style-type: none">• 25.1% increase in passenger activity• Increased service to San Salvador in March 2014
Air China	<ul style="list-style-type: none">• New Service to Beijing began June 2014
Brussels Airlines	<ul style="list-style-type: none">• Discontinued service for the winter season in October 2014

- United Airlines, including its regional affiliates, had the largest commercial passenger market share of 62.8%, a decrease compared to 68.2% in November 2013.

Cargo Activity

- For the month of November 2014, total cargo decreased 0.9% at Dulles from a year earlier. Domestic cargo increased 0.3% due primary to an increase on United (8.6%).
- International cargo decreased 1.4% due to declines mainly on British Airways (26.5%) and Etihad (29.8%), which were partially offset by increases on Austrian (47.9%), Saudi Arabian (80.3%), and new service by Air China.

Baltimore-Washington International Airport

- Current month commercial passenger activity vs. November 2013 increased 1.1%.
- BWI passenger activity outpaced activity at Dulles by 138.3k commercial passengers (8.5%) and National by 68.7K passengers (4.1%).
- Southwest continues to have the largest passenger market share with 71.6%, up from 70.1% in November 2013.
- Cargo activity at BWI totaled 8.2k metric tonnes, a 4.7% decrease from a year earlier. Activity on BWI's largest cargo carriers, FedEx and UPS, declined 9.1% and 9.2% respectively from November 2013.

Ronald Reagan Washington National Airport
 Air Traffic Schedule Activity
 November 2014 vs. November 2013

November 2014:	Daily Departures	Airlines*	Unduplicated Destinations
Domestic			
Passenger service information -			
Mainline	198	9	--
Regional Affiliate	<u>175</u>	<u>10</u>	--
Domestic Total	373	19	81
Transborder/International			
Passenger service information -			
Mainline	1	1	--
Regional Affiliate	<u>10</u>	<u>3</u>	--
Transborder/International Total	11	4	4

November 2013:	Daily Departures	Airlines*	Unduplicated Destinations
Domestic			
Passenger service information -			
Mainline	167	9	--
Regional Affiliate	<u>206</u>	<u>10</u>	--
Domestic Total	373	19	85
Transborder/International			
Passenger service information -			
Mainline	0	0	--
Regional Affiliate	<u>13</u>	<u>4</u>	--
Transborder/International Total	13	4	4

* The following airlines are counted as one airline:
 Southwest and AirTran
 American and US Airways
 Regional carriers flying for multiple mainline carriers

Source: DIIO, December 22, 2014

Washington Dulles International Airport
 Air Traffic Schedule Activity
 November 2014 vs. November 2013

November 2014:	Daily Departures	Airlines*	Unduplicated Destinations
Domestic			
Passenger service information -			
Mainline	102	9	--
Regional Affiliate	<u>166</u>	<u>13</u>	--
Domestic Total	268	22	87
Transborder/International			
Passenger service information -			
Mainline	48	25	--
Regional Affiliate	<u>10</u>	<u>2</u>	--
Transborder/International Total	58	27	43

November 2013:	Daily Departures	Airlines	Unduplicated Destinations
Domestic			
Passenger service information -			
Mainline	103	7	--
Regional Affiliate	<u>190</u>	<u>13</u>	--
Domestic Total	293	20	84
Transborder/International			
Passenger service information -			
Mainline	49	24	--
Regional Affiliate	<u>11</u>	<u>5</u>	--
Transborder/International Total	60	29	43

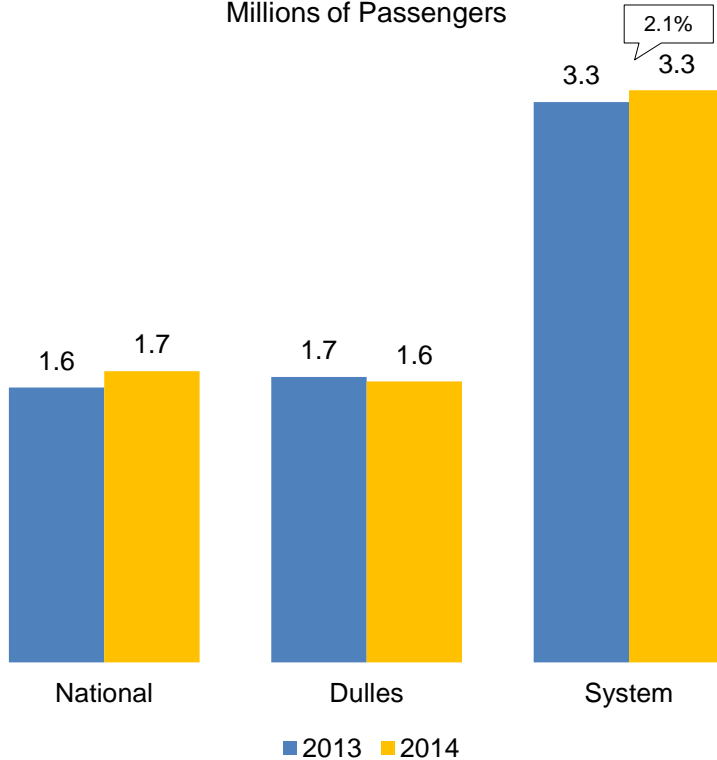
* The following airlines are counted as one airline:
 Pacific Wings and Sun Air International
 Avianca and TACA
 American Airlines and US Airways
 Austrian and Tyrolean
 Regional carriers flying for multiple mainline carriers

Source: DII, December 22, 2014

Passenger Trends

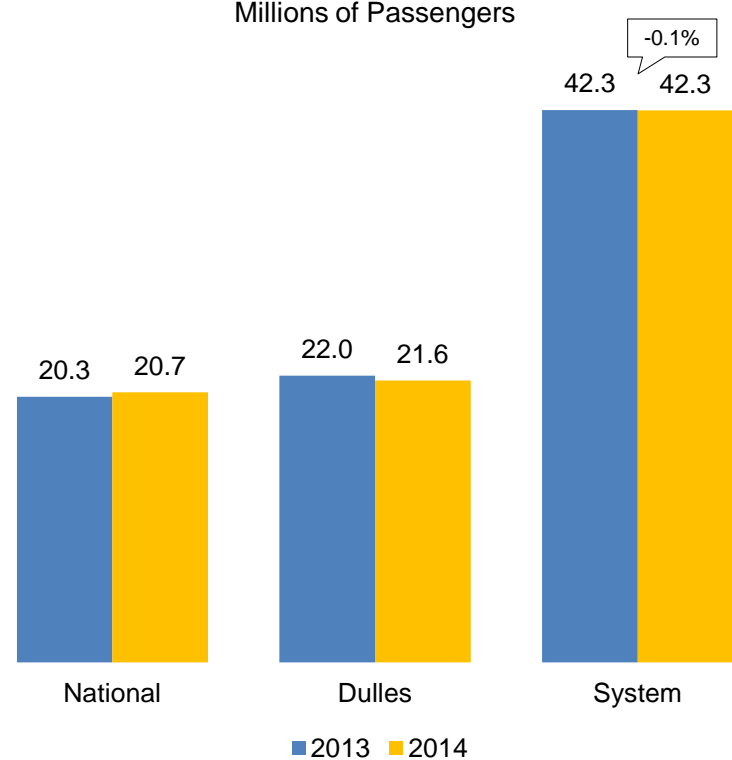
November 2014 Comparison

Millions of Passengers



Last 12-Months Comparison

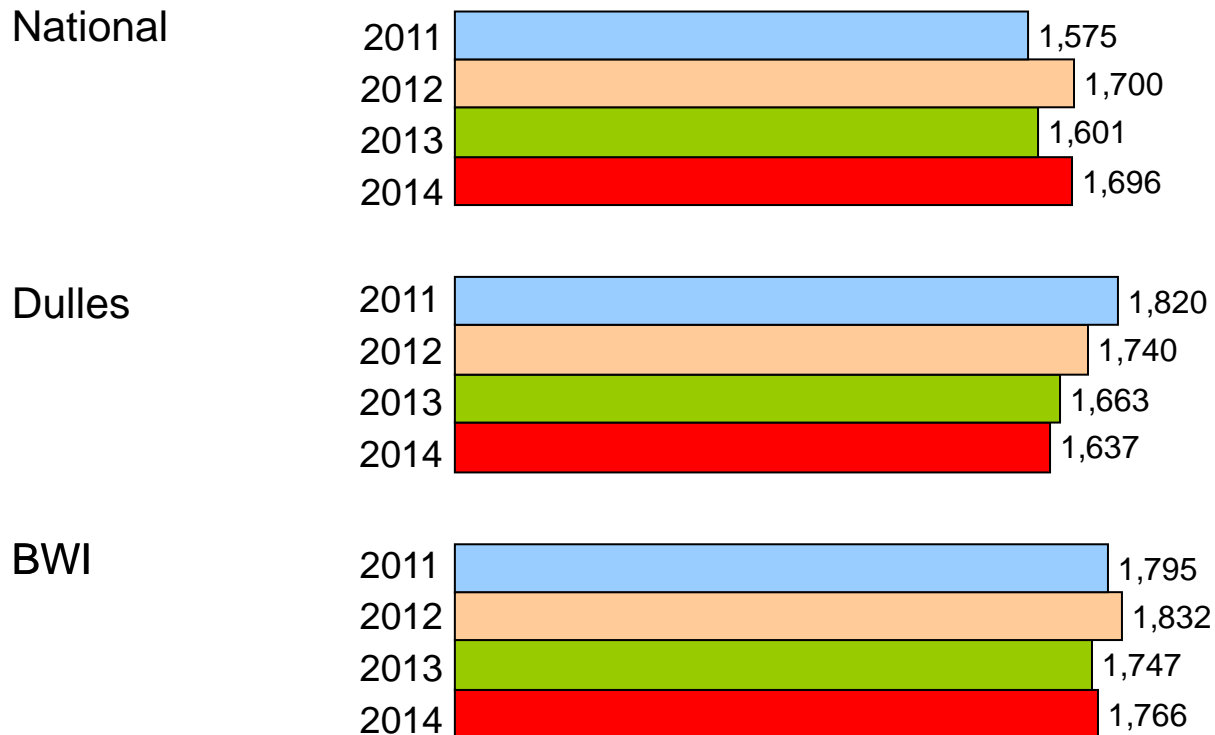
Millions of Passengers



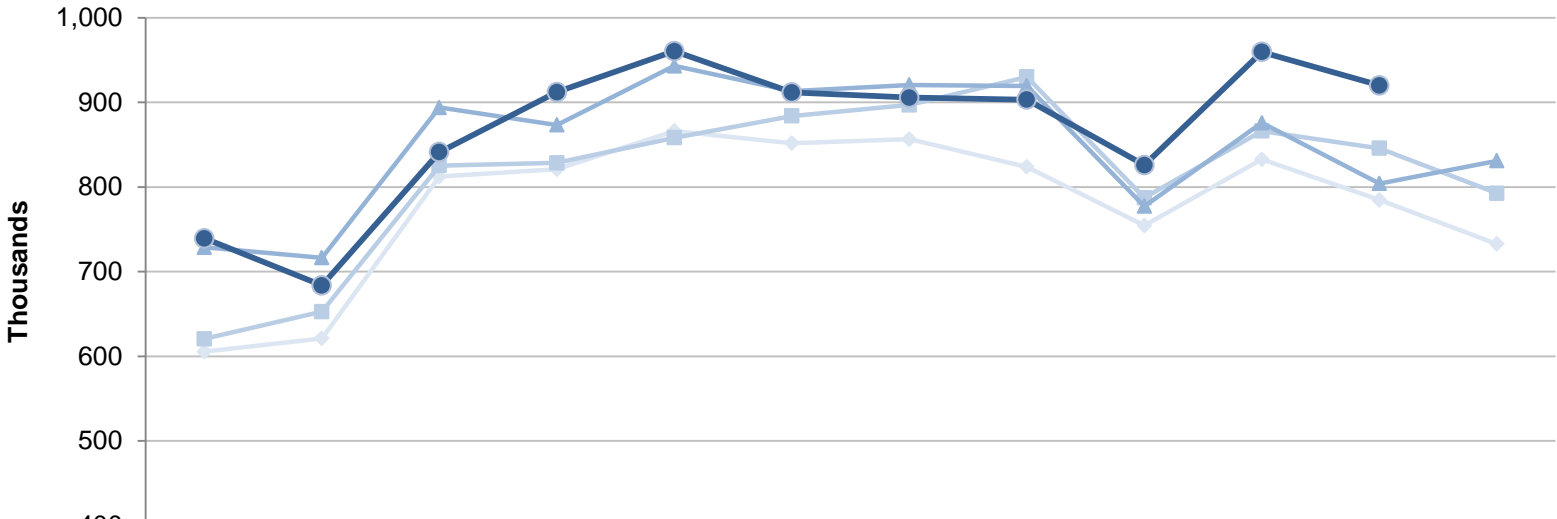
* System totals may not sum due to rounding.

Total Passengers

Four Year Comparison of the Month of November (Thousands)

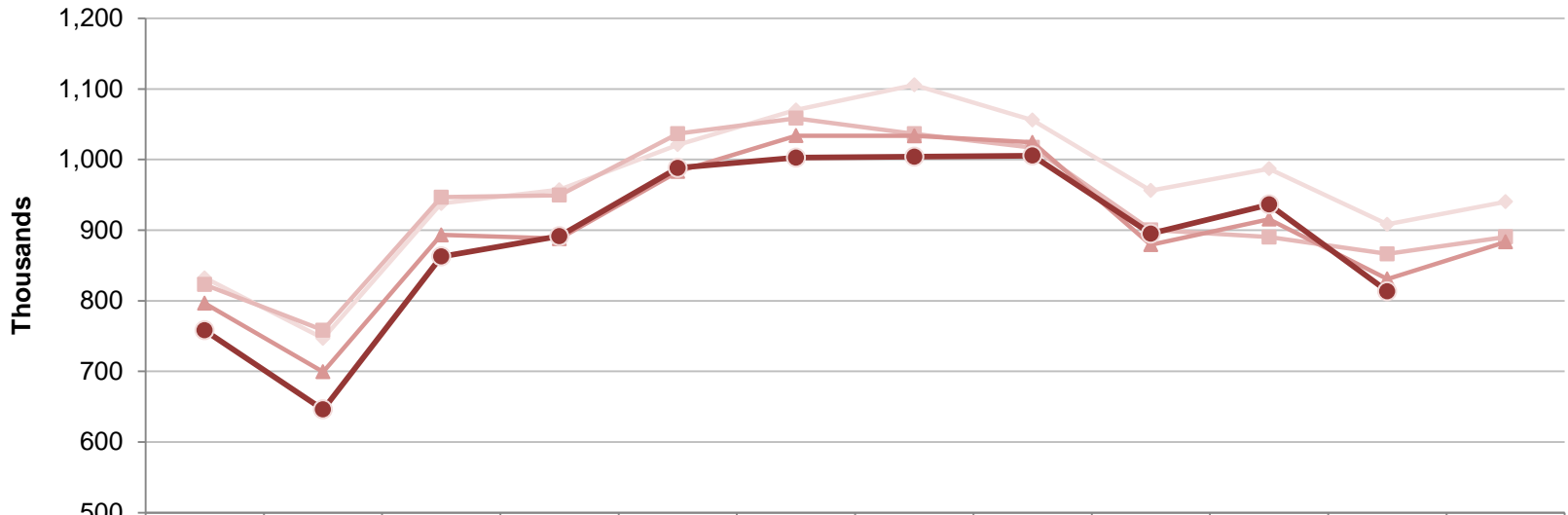


Ronald Reagan Washington National Airport
Total Commercial Passenger Enplanements
Calendar Years 2011 - 2014



	Jan	Feb	Mar	Apr	May	Jun	Jul	Aug	Sep	Oct	Nov	Dec
2011	606	621	812	821	866	852	856	824	754	833	785	733
2012	621	653	825	829	858	884	897	930	787	866	846	793
2013	729	717	894	873	943	913	921	920	777	876	804	831
2014	739	684	841	912	960	912	906	903	826	960	920	

Dulles International Airport
Total Commercial Passenger Enplanements
Calendar Years 2011 - 2014



	Jan	Feb	Mar	Apr	May	Jun	Jul	Aug	Sep	Oct	Nov	Dec
—◆— 2011	832	747	938	957	1,021	1,070	1,106	1,056	956	987	908	940
—■— 2012	823	758	947	950	1,037	1,059	1,036	1,017	900	890	866	890
—▲— 2013	796	699	893	888	983	1,034	1,034	1,024	879	915	831	883
—●— 2014	758	646	863	892	988	1,003	1,004	1,006	895	936	813	

**Commercial Passenger Market Share and Percent Change of Top Airlines
in the Washington and Baltimore Region**

November 2014				November 2013			
National	Top Airlines*	Percent Change	Passengers	Market Share	Top Airlines*	Passengers	Market Share
	1. American + US Airways	-10.6%	843,520	49.8%	1. American + US Airways	943,360	59.0%
	2. Delta	17.0%	255,663	15.1%	2. Delta	218,577	13.7%
	3. Southwest + Airtran	149.5%	217,534	12.8%	3. United	150,472	9.4%
	4. United	-1.0%	148,982	8.8%	4. JetBlue	98,840	6.2%
	5. JetBlue	26.2%	124,736	7.4%	5. Southwest + Airtran	87,204	5.5%
	6. Alaska	5.2%	34,154	2.0%	6. Frontier	38,595	2.4%
	7. Frontier	-33.5%	25,677	1.5%	7. Alaska	32,477	2.0%
	8. Virgin America	208.3%	18,828	1.1%	8. Air Canada	15,837	1.0%
	9. Air Canada	16.5%	18,444	1.1%	9. Sun Country	7,736	0.5%
	10. Sun Country	-17.4%	6,393	0.4%	10. Virgin America	6,107	0.4%
Total Commercial Passengers	5.9%	<u>1,693,931</u>	100.0%	Total Commercial Passengers	<u>1,599,205</u>	100.0%	
Dulles	Top Airlines*	Percent Change	Passengers	Market Share	Top Airlines*	Passengers	Market Share
	1. United	-9.4%	1,019,889	62.8%	1. United	1,125,892	68.2%
	2. Frontier	N/A	80,777	5.0%	2. American + US Airways	77,885	4.7%
	3. American + US Airways	-4.3%	74,507	4.6%	3. Delta	72,748	4.4%
	4. Delta	1.4%	73,795	4.5%	4. Southwest	44,992	2.7%
	5. Southwest	-9.6%	40,688	2.5%	5. JetBlue	35,194	2.1%
	6. TACA + Avianca	25.1%	30,250	1.9%	6. Virgin America	26,582	1.6%
	7. British Airways	29.2%	29,175	1.8%	7. Lufthansa	24,588	1.5%
	8. Virgin America	9.6%	29,134	1.8%	8. TACA + Avianca	24,177	1.5%
	9. Lufthansa	-8.2%	22,579	1.4%	9. British Airways	22,574	1.4%
	10. JetBlue	-37.9%	21,873	1.3%	10. Air France	19,897	1.2%
11. All Other Airlines	14.3%	<u>201,671</u>	12.4%	11. All Other Airlines	<u>176,471</u>	10.7%	
Total Commercial Passengers	-1.6%	<u>1,624,338</u>	100.0%	Total Commercial Passengers	<u>1,651,000</u>	100.0%	
Baltimore	Top Airlines*	Percent Change	Passengers	Market Share	Top Airlines*	Passengers	Market Share
	1. Southwest + Airtran	3.2%	1,261,570	71.6%	1. Southwest + Airtran	1,221,890	70.1%
	2. American + US Airways	-2.7%	164,957	9.4%	2. American + US Airways	169,448	9.7%
	3. Delta	-4.7%	159,924	9.1%	3. Delta	167,794	9.6%
	4. United + Continental	-23.3%	77,991	4.4%	4. United + Continental	101,620	5.8%
	5. Spirit	21.5%	43,346	2.5%	5. Spirit	35,682	2.0%
	6. JetBlue	-12.3%	18,325	1.0%	6. JetBlue	20,893	1.2%
	7. British Airways	-0.5%	8,712	0.5%	7. British Airways	8,759	0.5%
8. All Other Airlines	65.1%	<u>27,839</u>	1.6%	8. All Other Airlines	<u>16,859</u>	1.0%	
Total Commercial Passengers	1.1%	<u>1,762,664</u>	100.0%	Total Commercial Passengers	<u>1,742,945</u>	100.0%	

* Includes affiliated regional carriers

Commercial Passenger Market Share Summary

Total Passengers	Nov 2014	Nov 2013	Change
National	33.3%	32.0%	1.3%
Dulles	32.0%	33.1%	-1.1%
Baltimore	34.7%	34.9%	-0.2%
Domestic Passengers	Nov 2014	Nov 2013	Change
National	37.0%	35.6%	1.4%
Dulles	25.4%	26.3%	-1.0%
Baltimore	37.6%	38.0%	-0.4%
International Passengers	Nov 2014	Nov 2013	Change
National	4.7%	4.8%	-0.1%
Dulles	83.3%	83.9%	-0.6%
Baltimore	12.0%	11.2%	0.7%

Totals may not sum due to rounding.

Metropolitan Washington Airports Authority
Ronald Reagan Washington National Airport
Monthly Air Traffic Summary Report
November 2014

Description	Enplaned	Deplaned	Total	Year Ago	% Change
Aircraft Operations					
Commercial:					
Air Carrier:					
Domestic			11,807	9,350	26.3
International			58	0	100.0
Transborder			0	0	0.0
Total - Air Carrier			11,865	9,350	26.9
Regional:					
Domestic			10,285	12,267	- 16.2
International			0	56	- 100.0
Transborder			603	704	- 14.3
Total - Regional			10,888	13,027	- 16.4
Commercial:					
Domestic			22,092	21,617	2.2
Transborder			661	760	- 13.0
Total - Commercial			22,753	22,377	1.7
Non-Commercial:					
General Aviation			244	290	- 15.9
Military			262	256	2.3
Total - Non-Commercial			506	546	- 7.3
Grand Total - Aircraft Operations			23,259	22,923	1.5
Passengers					
Commercial:					
Air Carrier Domestic:					
Scheduled	668,895	523,426	1,192,321	1,052,864	13.2
Chartered	0	0	0	0	0.0
Total - Domestic Air Carrier	668,895	523,426	1,192,321	1,052,864	13.2
Air Carrier International:					
Scheduled	2,070	1,855	3,925	0	100.0
Chartered	0	0	0	0	0.0
Total - International Air Carrier	2,070	1,855	3,925	0	100.0
Air Carrier Transborder:					
Scheduled	0	0	0	0	0.0
Chartered	0	0	0	0	0.0
Total - Transborder Air Carrier	0	0	0	0	0.0
Total - Air Carrier	670,965	525,281	1,196,246	1,052,864	13.6
Regional:					
Domestic	237,303	236,804	474,107	518,138	- 8.5
International	0	0	0	3,024	- 100.0
Transborder	11,749	11,829	23,578	25,179	- 6.4
Total - Regional	249,052	248,633	497,685	546,341	- 8.9
Commercial:					
Domestic	906,198	760,230	1,666,428	1,571,002	6.1
Transborder	13,819	13,684	27,503	28,203	- 2.5
Total - Commercial	920,017	773,914	1,693,931	1,599,205	5.9
Non-Commercial:					
General Aviation	778	778	1,556	734	112.0
Military	264	286	550	601	- 8.5
Total - Non-Commercial	1,042	1,064	2,106	1,335	57.8
Grand Total - Passengers	921,059	774,978	1,696,037	1,600,540	6.0

**Metropolitan Washington Airports Authority
Ronald Reagan Washington National Airport
Monthly Air Traffic Summary Report
November 2014**

Description	Enplaned	Deplaned	Total	Year Ago	% Change
Cargo - Tonnes					
Mail:					
Domestic	27	0	27	20	37.5
International	0	0	0	0	0.0
Transborder	0	0	0	0	0.0
Total - Mail:	27	0	27	20	37.5
Freight + Express:					
Domestic	97	56	153	112	35.8
International	0	0	0	0	0.0
Transborder	0	0	0	0	- 55.1
Total - Freight + Express:	97	56	153	113	35.7
Mail Plus Freight + Express:					
Domestic	123	56	179	132	36.1
Transborder	0	0	0	0	- 55.1
Grand Total - Cargo	123	56	180	132	36.0

NOTE: Figures may not sum to total due to rounding.

Metropolitan Washington Airports Authority
Ronald Reagan Washington National Airport
Monthly Air Traffic Summary Report
January 2014 - November 2014

Description	Enplaned	Deplaned	Total	Year Ago	% Change
Aircraft Operations					
Commercial:					
Air Carrier:					
Domestic			114,538	113,812	0.6
International			632	310	103.9
Transborder			0	1,108	- 100.0
Total - Air Carrier			115,170	115,230	- 0.1
Regional:					
Domestic			130,362	140,018	- 6.9
International			162	393	- 58.8
Transborder			7,338	7,306	0.4
Total - Regional			137,862	147,717	- 6.7
Commercial:					
Domestic			244,900	253,830	- 3.5
Transborder			8,132	9,117	- 10.8
Total - Commercial			253,032	262,947	- 3.8
Non-Commercial:					
General Aviation			3,486	4,520	- 22.9
Military			2,618	2,285	14.6
Total - Non-Commercial			6,104	6,805	- 10.3
Grand Total - Aircraft Operations			259,136	269,752	- 3.9
Passengers					
Commercial:					
Air Carrier Domestic:					
Scheduled	6,369,502	6,256,339	12,625,841	12,382,304	2.0
Chartered	0	0	0	0	0.0
Total - Domestic Air Carrier	6,369,502	6,256,339	12,625,841	12,382,304	2.0
Air Carrier International:					
Scheduled	26,450	25,897	52,347	28,779	81.9
Chartered	0	0	0	0	0.0
Total - International Air Carrier	26,450	25,897	52,347	28,779	81.9
Air Carrier Transborder:					
Scheduled	0	0	0	51,788	- 100.0
Chartered	0	0	0	0	0.0
Total - Transborder Air Carrier	0	0	0	51,788	- 100.0
Total - Air Carrier	6,395,952	6,282,236	12,678,188	12,462,871	1.7
Regional:					
Domestic	3,008,772	3,031,012	6,039,784	6,011,100	0.5
International	4,877	4,766	9,643	24,321	- 60.4
Transborder	153,610	149,304	302,914	267,199	13.4
Total - Regional	3,167,259	3,185,082	6,352,341	6,302,620	0.8
Commercial:					
Domestic	9,378,274	9,287,351	18,665,625	18,393,404	1.5
Transborder	184,937	179,967	364,904	372,087	- 1.9
Total - Commercial	9,563,211	9,467,318	19,030,529	18,765,491	1.4
Non-Commercial:					
General Aviation	8,683	8,486	17,169	13,512	27.1
Military	3,308	3,250	6,558	7,089	- 7.5
Total - Non-Commercial	11,991	11,736	23,727	20,601	15.2
Grand Total - Passengers	9,575,202	9,479,054	19,054,256	18,786,092	1.4

Metropolitan Washington Airports Authority
Ronald Reagan Washington National Airport
Monthly Air Traffic Summary Report
January 2014 - November 2014

Description	Enplaned	Deplaned	Total	Year Ago	% Change
Cargo - Tonnes					
Mail:					
Domestic	287	30	317	34	845.2
International	0	0	0	0	0.0
Transborder	0	0	0	0	0.0
Total - Mail:	287	30	317	34	845.2
Freight + Express:					
Domestic	949	681	1,630	1,710	- 4.7
International	0	0	0	0	- 100.0
Transborder	1	0	1	1	- 36.0
Total - Freight + Express:	950	681	1,631	1,712	- 4.7
Mail Plus Freight + Express:					
Domestic	1,237	711	1,947	1,744	11.7
Transborder	1	0	1	2	- 40.5
Grand Total - Cargo	1,237	711	1,948	1,745	11.6

NOTE: Figures may not sum to total due to rounding.

Metropolitan Washington Airports Authority
Ronald Reagan Washington National Airport
Monthly Air Traffic Summary Report
December 2013 - November 2014

Description	Enplaned	Deplaned	Total	Year Ago	% Change
Aircraft Operations					
Commercial:					
Air Carrier:					
Domestic			123,926	123,636	0.2
International			656	334	96.4
Transborder			0	1,326	- 100.0
Total - Air Carrier			124,582	125,296	- 0.6
Regional:					
Domestic			142,542	152,154	- 6.3
International			175	407	- 57.0
Transborder			8,024	7,953	0.9
Total - Regional			150,741	160,514	- 6.1
Commercial:					
Domestic			266,468	275,790	- 3.4
Transborder			8,855	10,020	- 11.6
Total - Commercial			275,323	285,810	- 3.7
Non-Commercial:					
General Aviation			4,023	5,063	- 20.5
Military			2,686	2,377	13.0
Total - Non-Commercial			6,709	7,440	- 9.8
Grand Total - Aircraft Operations			282,032	293,250	- 3.8
Passengers					
Commercial:					
Air Carrier Domestic:					
Scheduled	6,908,947	6,765,552	13,674,499	13,400,980	2.0
Chartered	0	0	0	0	0.0
Total - Domestic Air Carrier	6,908,947	6,765,552	13,674,499	13,400,980	2.0
Air Carrier International:					
Scheduled	27,981	26,766	54,747	31,137	75.8
Chartered	0	0	0	0	0.0
Total - International Air Carrier	27,981	26,766	54,747	31,137	75.8
Air Carrier Transborder:					
Scheduled	0	0	0	61,745	- 100.0
Chartered	0	0	0	0	0.0
Total - Transborder Air Carrier	0	0	0	61,745	- 100.0
Total - Air Carrier	6,936,928	6,792,318	13,729,246	13,493,862	1.7
Regional:					
Domestic	3,285,371	3,302,252	6,587,623	6,514,738	1.1
International	5,208	5,157	10,365	25,061	- 58.6
Transborder	166,780	163,695	330,475	285,342	15.8
Total - Regional	3,457,359	3,471,104	6,928,463	6,825,141	1.5
Commercial:					
Domestic	10,194,318	10,067,804	20,262,122	19,915,718	1.7
Transborder	199,969	195,618	395,587	403,285	- 1.9
Total - Commercial	10,394,287	10,263,422	20,657,709	20,319,003	1.7
Non-Commercial:					
General Aviation	9,406	9,201	18,607	14,830	25.5
Military	3,498	3,435	6,933	7,787	- 11.0
Total - Non-Commercial	12,904	12,636	25,540	22,617	12.9
Grand Total - Passengers	10,407,191	10,276,058	20,683,249	20,341,620	1.7

**Metropolitan Washington Airports Authority
Ronald Reagan Washington National Airport
Monthly Air Traffic Summary Report
December 2013 - November 2014**

Description	Enplaned	Deplaned	Total	Year Ago	% Change
Cargo - Tonnes					
Mail:					
Domestic	301	39	339	34	909.0
International	0	0	0	0	0.0
Transborder	0	0	0	0	0.0
Total - Mail:	301	39	339	34	909.0
Freight + Express:					
Domestic	1,045	720	1,765	2,173	- 18.8
International	0	0	0	0	- 100.0
Transborder	1	1	1	2	- 20.9
Total - Freight + Express:	1,045	721	1,766	2,175	- 18.8
Mail Plus Freight + Express:					
Domestic	1,346	759	2,104	2,207	- 4.7
Transborder	1	1	1	2	- 26.1
Grand Total - Cargo	1,346	759	2,105	2,209	- 4.7

NOTE: Figures may not sum to total due to rounding.

Metropolitan Washington Airports Authority
Washington Dulles International Airport
Monthly Air Traffic Summary Report
November 2014

Description	Enplaned	Deplaned	Total	Year Ago	% Change
Aircraft Operations					
Commercial:					
Air Carrier:					
Domestic			5,597	6,005	- 6.8
International			2,726	2,760	- 1.2
Transborder			0	0	0.0
Total - Air Carrier			8,323	8,765	- 5.0
Regional:					
Domestic			10,925	11,929	- 8.4
International			0	11	- 100.0
Transborder			406	882	- 54.0
Total - Regional			11,331	12,822	- 11.6
Commercial:					
Domestic			16,522	17,934	- 7.9
International			3,132	3,653	- 14.3
Total - Commercial			19,654	21,587	- 9.0
Non-Commercial:					
General Aviation			2,974	3,287	- 9.5
Military			42	87	- 51.7
Total - Non-Commercial			3,016	3,374	- 10.6
Grand Total - Aircraft Operations			22,670	24,961	- 9.2
Passengers					
Commercial:					
Air Carrier Domestic:					
Scheduled	332,391	338,577	670,968	682,328	- 1.7
Chartered	150	227	377	797	- 52.7
Total - Domestic Air Carrier	332,541	338,804	671,345	683,125	- 1.7
Air Carrier International:					
Scheduled	236,839	231,255	468,094	455,050	2.9
Chartered	405	520	925	853	8.4
Total - International Air Carrier	237,244	231,775	469,019	455,903	2.9
Air Carrier Transborder:					
Scheduled	0	0	0	0	0.0
Chartered	0	0	0	189	- 100.0
Total - Transborder Air Carrier	0	0	0	189	- 100.0
Total - Air Carrier	569,785	570,579	1,140,364	1,139,217	0.1
Regional:					
Domestic	236,889	232,639	469,528	478,027	- 1.8
International	0	0	0	461	- 100.0
Transborder	6,771	7,675	14,446	33,295	- 56.6
Total - Regional	243,660	240,314	483,974	511,783	- 5.4
Commercial:					
Domestic	569,430	571,443	1,140,873	1,161,152	- 1.7
International	244,015	239,450	483,465	489,848	- 1.3
Total - Commercial	813,445	810,893	1,624,338	1,651,000	- 1.6
Non-Commercial:					
General Aviation	6,388	5,992	12,380	12,401	- 0.2
Military	0	2	2	0	100.0
Total - Non-Commercial	6,388	5,994	12,382	12,401	- 0.2
Grand Total - Passengers	819,833	816,887	1,636,720	1,663,401	- 1.6

Metropolitan Washington Airports Authority
Washington Dulles International Airport
Monthly Air Traffic Summary Report
November 2014

Description	Enplaned	Deplaned	Total	Year Ago	% Change
Cargo - Tonnes					
Mail:					
Domestic	247	380	627	730	- 14.1
International	197	115	312	2,532	- 87.7
Total - Mail:	445	495	940	3,262	- 71.2
Freight + Express:					
Domestic	3,554	2,957	6,511	6,385	2.0
International	5,050	10,112	15,162	13,164	15.2
Total - Freight + Express:	8,604	13,069	21,673	19,548	10.9
Mail Plus Freight + Express:					
Domestic	3,802	3,337	7,138	7,115	0.3
International	5,247	10,227	15,474	15,695	- 1.4
Grand Total - Cargo	9,049	13,564	22,613	22,810	- 0.9

NOTE: Figures may not sum to total due to rounding.

Metropolitan Washington Airports Authority
Washington Dulles International Airport
Monthly Air Traffic Summary Report
January 2014 - November 2014

Description	Enplaned	Deplaned	Total	Year Ago	% Change
Aircraft Operations					
Commercial:					
Air Carrier:					
Domestic			63,604	68,057	- 6.5
International			33,125	33,021	0.3
Transborder			0	12	- 100.0
Total - Air Carrier			96,729	101,090	- 4.3
Regional:					
Domestic			125,446	133,886	- 6.3
International			360	91	295.6
Transborder			7,570	9,800	- 22.8
Total - Regional			133,376	143,777	- 7.2
Commercial:					
Domestic			189,050	201,943	- 6.4
International			41,055	42,924	- 4.4
Total - Commercial			230,105	244,867	- 6.0
Non-Commercial:					
General Aviation			36,124	38,097	- 5.2
Military			492	953	- 48.4
Total - Non-Commercial			36,616	39,050	- 6.2
Grand Total - Aircraft Operations			266,721	283,917	- 6.1
Passengers					
Commercial:					
Air Carrier Domestic:					
Scheduled	3,930,763	4,002,751	7,933,514	8,183,884	- 3.1
Chartered	6,498	6,388	12,886	18,130	- 28.9
Total - Domestic Air Carrier	3,937,261	4,009,139	7,946,400	8,202,014	- 3.1
Air Carrier International:					
Scheduled	3,059,488	3,120,412	6,179,900	5,991,981	3.1
Chartered	4,842	4,771	9,613	10,724	- 10.4
Total - International Air Carrier	3,064,330	3,125,183	6,189,513	6,002,705	3.1
Air Carrier Transborder:					
Scheduled	0	0	0	0	0.0
Chartered	0	0	0	662	- 100.0
Total - Transborder Air Carrier	0	0	0	662	- 100.0
Total - Air Carrier	7,001,591	7,134,322	14,135,913	14,205,381	- 0.5
Regional:					
Domestic	2,623,378	2,570,722	5,194,100	5,428,449	- 4.3
International	13,684	14,102	27,786	4,079	581.2
Transborder	164,383	179,985	344,368	412,183	- 16.5
Total - Regional	2,801,445	2,764,809	5,566,254	5,844,711	- 4.8
Commercial:					
Domestic	6,560,639	6,579,861	13,140,500	13,630,463	- 3.6
International	3,242,397	3,319,270	6,561,667	6,419,629	2.2
Total - Commercial	9,803,036	9,899,131	19,702,167	20,050,092	- 1.7
Non-Commercial:					
General Aviation	71,444	68,327	139,771	138,504	0.9
Military	287	304	591	1,133	- 47.8
Total - Non-Commercial	71,731	68,631	140,362	139,637	0.5
Grand Total - Passengers	9,874,767	9,967,762	19,842,529	20,189,729	- 1.7

Metropolitan Washington Airports Authority
Washington Dulles International Airport
Monthly Air Traffic Summary Report
January 2014 - November 2014

Description	Enplaned	Deplaned	Total	Year Ago	% Change
Cargo - Tonnes					
Mail:					
Domestic	2,275	4,104	6,379	5,177	23.2
International	2,807	977	3,784	8,372	- 54.8
Total - Mail:	5,082	5,081	10,163	13,549	- 25.0
Freight + Express:					
Domestic	40,535	33,617	74,152	80,964	- 8.4
International	60,475	99,561	160,035	137,079	16.7
Total - Freight + Express:	101,009	133,178	234,187	218,043	7.4
Mail Plus Freight + Express:					
Domestic	42,810	37,721	80,531	86,141	- 6.5
International	63,282	100,538	163,819	145,451	12.6
Grand Total - Cargo	106,091	138,259	244,350	231,592	5.5

NOTE: Figures may not sum to total due to rounding.

Metropolitan Washington Airports Authority
Washington Dulles International Airport
Monthly Air Traffic Summary Report
December 2013 - November 2014

Description	Enplaned	Deplaned	Total	Year Ago	% Change
Aircraft Operations					
Commercial:					
Air Carrier:					
Domestic			69,524	74,278	- 6.4
International			35,932	35,807	0.3
Transborder			1	13	- 92.3
Total - Air Carrier			105,457	110,098	- 4.2
Regional:					
Domestic			136,683	145,523	- 6.1
International			372	91	308.8
Transborder			8,325	10,574	- 21.3
Total - Regional			145,380	156,188	- 6.9
Commercial:					
Domestic			206,207	219,801	- 6.2
International			44,630	46,485	- 4.0
Total - Commercial			250,837	266,286	- 5.8
Non-Commercial:					
General Aviation			39,245	41,362	- 5.1
Military			523	1,006	- 48.0
Total - Non-Commercial			39,768	42,368	- 6.1
Grand Total - Aircraft Operations			290,605	308,654	- 5.8
Passengers					
Commercial:					
Air Carrier Domestic:					
Scheduled	4,294,605	4,361,124	8,655,729	8,927,553	- 3.0
Chartered	6,764	6,661	13,425	19,074	- 29.6
Total - Domestic Air Carrier	4,301,369	4,367,785	8,669,154	8,946,627	- 3.1
Air Carrier International:					
Scheduled	3,336,568	3,375,337	6,711,905	6,497,371	3.3
Chartered	5,299	5,271	10,570	11,799	- 10.4
Total - International Air Carrier	3,341,867	3,380,608	6,722,475	6,509,170	3.3
Air Carrier Transborder:					
Scheduled	0	0	0	0	0.0
Chartered	0	0	0	662	- 100.0
Total - Transborder Air Carrier	0	0	0	662	- 100.0
Total - Air Carrier	7,643,236	7,748,393	15,391,629	15,456,459	- 0.4
Regional:					
Domestic	2,850,244	2,802,715	5,652,959	5,911,260	- 4.4
International	13,744	14,739	28,483	4,079	598.3
Transborder	179,090	196,240	375,330	442,871	- 15.3
Total - Regional	3,043,078	3,013,694	6,056,772	6,358,210	- 4.7
Commercial:					
Domestic	7,151,613	7,170,500	14,322,113	14,857,887	- 3.6
International	3,534,701	3,591,587	7,126,288	6,956,782	2.4
Total - Commercial	10,686,314	10,762,087	21,448,401	21,814,669	- 1.7
Non-Commercial:					
General Aviation	77,072	73,781	150,853	149,640	0.8
Military	301	310	611	1,145	- 46.6
Total - Non-Commercial	77,373	74,091	151,464	150,785	0.5
Grand Total - Passengers	10,763,687	10,836,178	21,599,865	21,965,454	- 1.7

Metropolitan Washington Airports Authority
Washington Dulles International Airport
Monthly Air Traffic Summary Report
December 2013 - November 2014

Description	Enplaned	Deplaned	Total	Year Ago	% Change
Cargo - Tonnes					
Mail:					
Domestic	2,579	4,555	7,133	5,575	28.0
International	3,630	1,496	5,127	8,499	- 39.7
Total - Mail:	6,209	6,051	12,260	14,074	- 12.9
Freight + Express:					
Domestic	43,669	37,106	80,775	90,107	- 10.4
International	65,338	107,746	173,084	150,281	15.2
Total - Freight + Express:	109,007	144,852	253,859	240,388	5.6
Mail Plus Freight + Express:					
Domestic	46,248	41,661	87,908	95,681	- 8.1
International	68,968	109,243	178,211	158,780	12.2
Grand Total - Cargo	115,216	150,903	266,119	254,461	4.6

NOTE: Figures may not sum to total due to rounding.