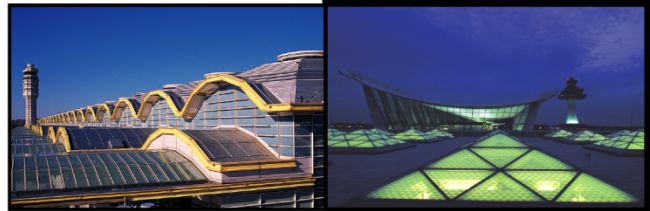


April  
2014

# Air Traffic Statistics

---



METROPOLITAN WASHINGTON AIRPORTS AUTHORITY



# Metropolitan Washington Airports Authority

## Air Traffic Statistics

### Table of Contents

#### Summary

Air Traffic Summary .....	1
SH&E Air Traffic Schedule Activity.....	3
Passenger Trends.....	5
Total Passengers 4-Year Comparison - DCA, IAD, BWI.....	6
Total Commercial Passenger Enplanements.....	7
Market Share and Percentage of Top Airlines - DCA, IAD, BWI.....	9

#### Air Traffic Statistics - DCA

Monthly Air Traffic Summary – Current Month.....	10
Monthly Air Traffic Summary – Year-to-Date .....	12
Monthly Air Traffic Summary – Last 12 Months .....	14

#### Air Traffic Statistics - IAD

Monthly Air Traffic Summary – Current Month.....	16
Monthly Air Traffic Summary – Year-to-Date .....	18
Monthly Air Traffic Summary – Last 12 Months .....	20

## Air Traffic Summary April 2014

### Passenger Activity (in Millions)

		Current Month			Year-to-Date			Last 12 Months		
		DCA	IAD	System	DCA	IAD	System	DCA	IAD	System
<b>Commercial Total</b>	<b>Passengers</b>	1.8	1.8	3.6	6.4	6.4	12.8	20.3	21.7	42.0
	<b>% Change</b>	3.1%	(0.6%)	1.2%	(1.3%)	(3.6%)	(2.4%)	0.6%	(2.1%)	(0.8%)
<b>Dom</b>	Passengers	1.8	1.2	3.0	6.3	4.3	10.6	19.9	14.5	34.5
	% Change	3.2%	(3.0%)	0.6%	(1.2%)	(5.9%)	(3.2%)	0.7%	(4.7%)	(1.7%)
<b>Int'l</b>	Passengers	< 0.1	0.6	0.6	0.1	2.0	2.2	0.4	7.0	7.4
	% Change	(2.9%)	5.2%	4.7%	(6.9%)	1.8%	1.3%	(2.4%)	3.8%	3.4%

Note: System totals may not sum due to rounding.

U.S. industry average passenger enplanements as reported by Airlines for America (A4A):

Enplanements	Current Month	Year-to-Date
System	3.9%	1.8%
Domestic	3.5%	1.4%
International	6.0%	4.1%

#### Ronald Reagan Washington National Airport

- Domestic commercial passenger activity increased 3.2% in April 2014. Significant activity by carrier follows:

Airline	Comments
American + US Airways	<ul style="list-style-type: none"> <li>0.4% increase in passenger activity</li> <li>New service to Key West began in January 2014</li> <li>Increased service to Detroit in May 2013, Rochester in September 2013, Greensboro in November 2013, Boston in March 2014, and Augusta in April 2014</li> <li>Reduced service to Chicago in September 2013, Dallas in December 2013, Buffalo, Norfolk, and Pittsburgh in January 2014, and Charleston in April 2014</li> </ul>
Delta	<ul style="list-style-type: none"> <li>9.5% increase in passenger traffic</li> <li>New service to Madison and Omaha in March 2014 and increased service to New York La Guardia in October 2013 and Minneapolis in April 2014 offset service reductions to Atlanta in September 2013 and Memphis in January 2014</li> </ul>
United	<ul style="list-style-type: none"> <li>3.0% increase in passenger activity</li> <li>Reduced a daily departure to Cleveland in September 2013</li> </ul>
Southwest	<ul style="list-style-type: none"> <li>32.6% increase in passenger activity</li> <li>New service to Houston Hobby in August 2013 and Kansas City in March 2014</li> <li>Discontinued service to Orlando in September 2013</li> </ul>

- Transborder passenger traffic declined 2.9% as a result of service reductions to Nassau and Toronto by American + US Airways.
- The combined American + US Airways, including its regional affiliates, had the largest commercial passenger market share with 58.2%, a decrease compared to 59.9% in April 2013.

## Washington Dulles International Airport

### Domestic Passenger Activity

- Domestic commercial passenger activity declined 3.0% in April 2014. Significant activity by carrier follows:

<b>Airline</b>	<b>Comments</b>
United	<ul style="list-style-type: none"><li>4.8% decrease in passenger activity</li><li>Nine fewer daily departures as a result of service adjustments, including discontinued service to Clarksburg in July 2013, Salt Lake City in December 2013, and Albuquerque in March 2014</li><li>New service to Grand Rapids in May 2013</li></ul>
Delta	<ul style="list-style-type: none"><li>2.8% increase in passenger activity</li><li>Discontinued service to New York La Guardia in January 2014 and reduced service to Minneapolis in January 2014</li><li>Increased service to New York JFK in March 2014</li></ul>

### International Passenger Activity

- April 2014 international commercial passenger traffic increased 5.2%. Significant activity by carrier follows:

<b>Airline</b>	<b>Comments</b>
United	<ul style="list-style-type: none"><li>1.2% decrease in passenger activity</li><li>Discontinued service to San Salvador in April 2014, reduced service to Geneva and Kuwait in October 2013</li><li>Increased service to Cancun, Guatemala City, and San Jose (Costa Rica) in March 2014</li></ul>
Etihad	<ul style="list-style-type: none"><li>46.9% increase in passenger activity compared to the carrier's first full month of service in April 2013</li></ul>
Brussels	<ul style="list-style-type: none"><li>New service to Brussels began in June 2013</li></ul>

- United Airlines, including its regional affiliates, had the largest commercial passenger market share of 65.4%, a decrease compared to 67.8% in April 2013.

### Cargo Activity

- For the month of April, total cargo increased 3.8% from 2013. Domestic cargo declined 8.0% mainly due to an 11.5% decline in Dulles's largest domestic cargo carrier, FedEx, resulting from reductions in inbound freight as heavier shipments were shifted to ground service. FedEx activity at BWI declined 2.2%. Moreover, domestic cargo on United declined 9.8%.
- International cargo increased 11.2% due to increases on United (7.4%), Air France (51.0%), and All Nippon (20.1%), as well as Brussels Airlines, which began operations in June 2013.

## Baltimore-Washington International Airport

- Current month commercial passenger activity vs. April 2013 increased 2.7%.
- BWI passenger activity outpaced activity at Dulles by 116.6k commercial passengers (6.5%) and activity at National by 82.6k passengers (4.5%). International passenger volume increased 19.0% to 78.9k compared to 66.3k in April 2013.
- Southwest had the largest passenger market share with 71.8%, no change from April 2013.
- Cargo activity totaled 8.8k metric tonnes, a 0.7% increase from a year earlier.

**Ronald Reagan Washington National Airport**  
 SH&E Air Traffic Schedule Activity  
 April 2014 vs. April 2013

April 2014:	Departures	Airlines*	Unduplicated Cities
<b>Domestic</b>			
<b>Passenger service (daily) information -</b>			
Mainline	181	9	--
Regional	<u>241</u>	<u>10</u>	--
Domestic Total	422	19	86
<b>Transborder/International</b>			
<b>Passenger service (weekly) information -</b>			
Mainline	2	1	--
Regional	<u>95</u>	<u>4</u>	--
Transborder/International Total	97	5	5

April 2013:	Departures	Airlines*	Unduplicated Cities
<b>Domestic</b>			
<b>Passenger service (daily) information -</b>			
Mainline	187	9	--
Regional	<u>230</u>	<u>9</u>	--
Domestic Total	417	18	84
<b>Transborder/International</b>			
<b>Passenger service (weekly) information -</b>			
Mainline	28	2	--
Regional	<u>81</u>	<u>3</u>	--
Transborder/International Total	109	5	5

\* The following airlines are counted as one airline:  
 Southwest and AirTran  
 American and US Airways  
 Regional carriers flying for multiple mainline carriers

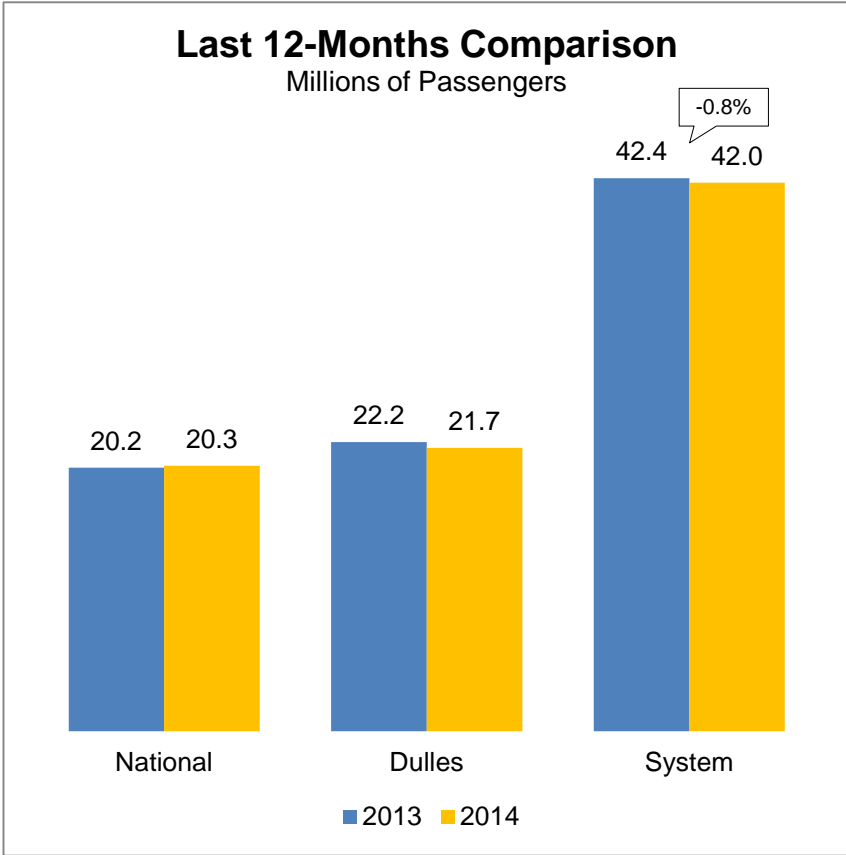
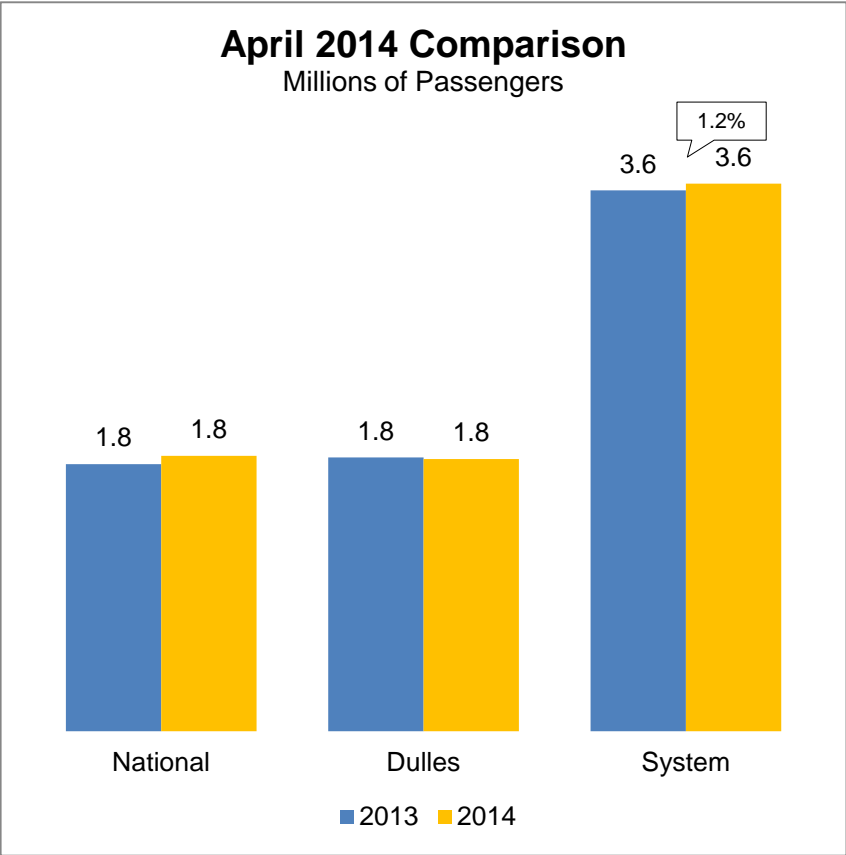
**Washington Dulles International Airport**  
 SH&E Air Traffic Schedule Activity  
 April 2014 vs. April 2013

April 2014:	Departures	Airlines*	Unduplicated Cities
<b>Domestic</b>			
<b>Passenger service (daily) information -</b>			
Mainline	106	8	--
Regional	<u>189</u>	<u>11</u>	--
Domestic Total	295	19	78
<b>Transborder/International</b>			
<b>Passenger service (weekly) information -</b>			
Mainline	364	26	--
Regional	<u>77</u>	<u>4</u>	--
Transborder/International Total	441	30	44

April 2013:	Departures	Airlines	Unduplicated Cities
<b>Domestic</b>			
<b>Passenger service (daily) information -</b>			
Mainline	116	8	--
Regional	<u>197</u>	<u>12</u>	--
Domestic Total	313	20	81
<b>Transborder/International</b>			
<b>Passenger service (weekly) information -</b>			
Mainline	340	25	--
Regional	<u>82</u>	<u>4</u>	--
Transborder/International Total	422	29	44

\* The following airlines are counted as one airline:  
 Pacific Wings and Sun Air International  
 Regional carriers flying for multiple mainline carriers

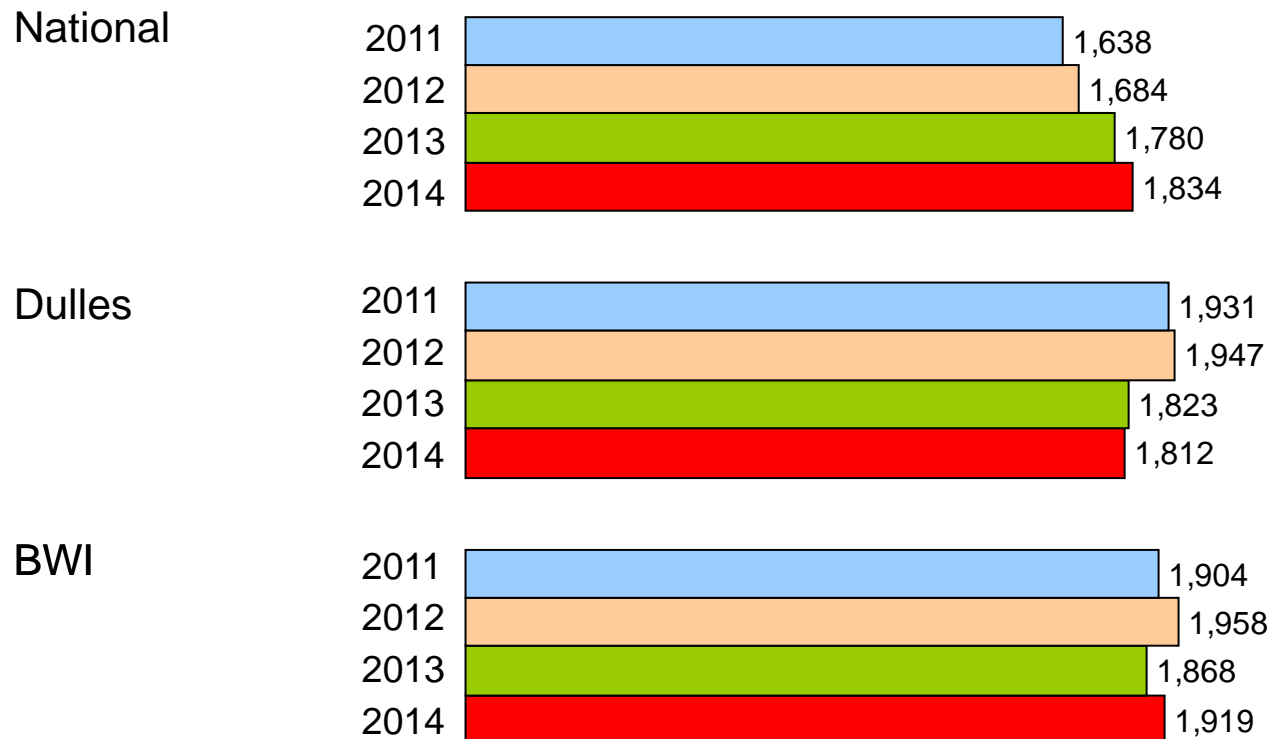
# Passenger Trends



\* System totals may not sum due to rounding.

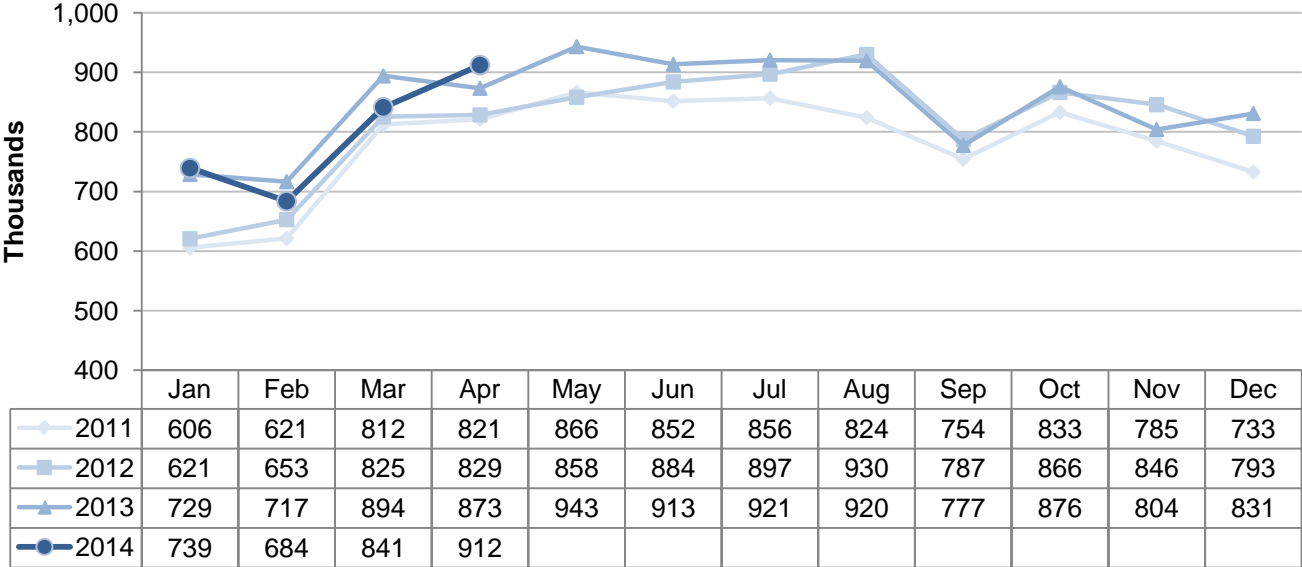
# Total Passengers

## Four Year Comparison of the Month of April (Thousands)

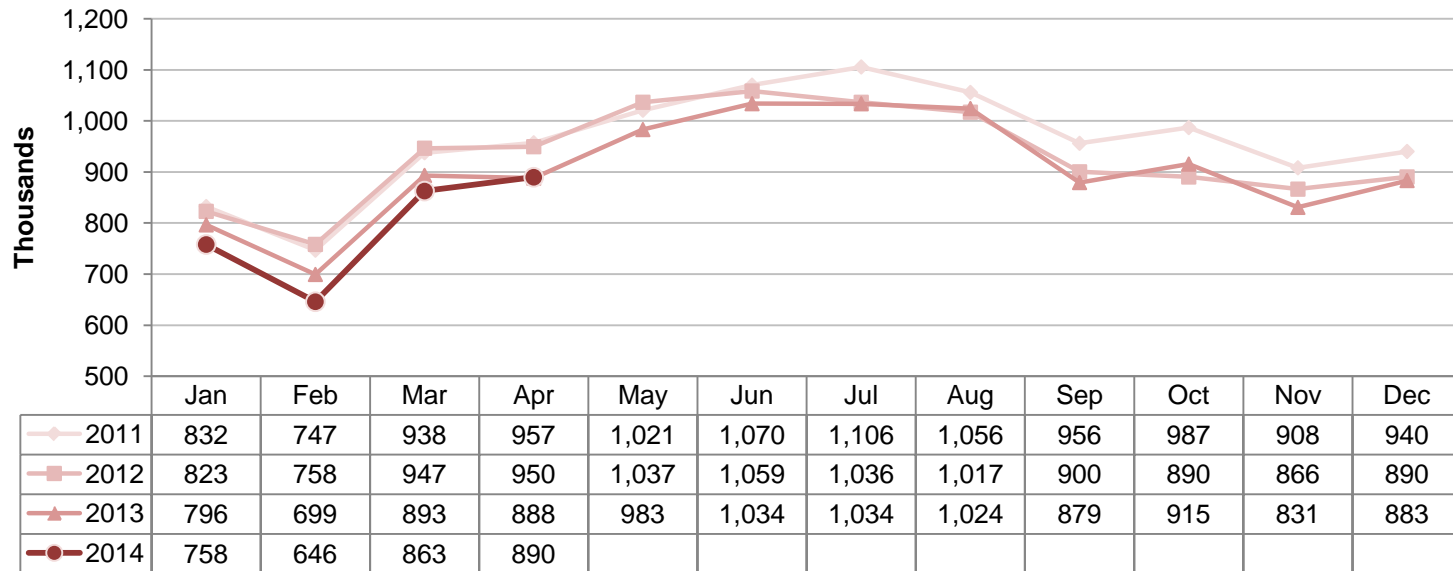




**Ronald Reagan Washington National Airport**  
 Total Commercial Passenger Enplanements  
 Calendar Years 2011 - 2014



**Dulles International Airport**  
 Total Commercial Passenger Enplanements  
 Calendar Years 2011 - 2014



**Commercial Passenger Market Share and Percent Change of Top Airlines  
in the Washington and Baltimore Region**

**April 2014**

	April 2014		April 2013	
	Percent Change	Passengers	Passengers	Market Share
<b>National</b>				
<b>Top Airlines*</b>				
1. American + US Airways	0.2%	1,066,989	1,064,749	58.2%
2. Delta	9.5%	287,271	262,370	15.7%
3. United	3.0%	168,963	164,008	9.2%
4. Southwest + Airtran	32.6%	107,284	100,132	5.9%
5. JetBlue	3.1%	103,189	80,903	5.6%
6. Alaska	0.6%	35,339	37,965	1.9%
7. Frontier	-32.5%	25,620	35,132	1.4%
8. Air Canada	6.0%	19,734	18,624	1.1%
9. Sun Country	58.7%	10,233	7,215	0.6%
10. Virgin America	4.7%	7,555	6,449	0.4%
Total Commercial Passengers	3.1%	<u>1,832,177</u>	<u>1,777,547</u>	100.0%

**April 2013**

	April 2014		April 2013	
	Percent Change	Passengers	Passengers	Market Share
<b>Dulles</b>				
<b>Top Airlines*</b>				
1. United	-4.1%	1,176,438	1,226,128	67.8%
2. American + US Airways	2.1%	95,767	93,760	5.3%
3. Delta	3.2%	81,415	78,900	4.5%
4. Southwest	15.3%	51,920	45,036	2.9%
5. Virgin America	-2.2%	35,851	36,652	2.0%
6. JetBlue	1.7%	34,479	34,637	1.9%
7. British Airways	9.3%	33,244	33,887	1.8%
8. Lufthansa	-13.0%	30,132	30,407	1.7%
9. Air France	-7.1%	26,502	28,539	1.5%
10. TACA	18.5%	19,955	16,835	1.1%
11. All Other Airlines	16.2%	<u>212,462</u>	<u>182,875</u>	11.8%
Total Commercial Passengers	-0.5%	<u>1,798,165</u>	<u>1,807,656</u>	100.0%

	April 2014		April 2013	
	Percent Change	Passengers	Passengers	Market Share
<b>Baltimore</b>				
<b>Top Airlines*</b>				
1. Southwest + Airtran	2.7%	1,374,521	1,338,254	71.8%
2. Delta	5.8%	183,951	175,144	9.6%
3. American + US Airways	3.2%	180,725	173,877	9.4%
4. United + Continental	-7.1%	86,369	92,922	4.5%
5. Spirit	25.8%	36,454	28,982	1.9%
6. JetBlue	0.5%	23,502	23,384	1.2%
7. British Airways	1.7%	9,522	9,366	0.5%
8. All Other Airlines	-10.9%	<u>19,725</u>	<u>22,138</u>	1.0%
Total Commercial Passengers	2.7%	<u>1,914,769</u>	<u>1,864,067</u>	100.0%

	April 2014		April 2013	
	Percent Change	Passengers	Passengers	Market Share
<b>Baltimore</b>				
<b>Top Airlines*</b>				
1. Southwest + Airtran	2.7%	1,374,521	1,338,254	71.8%
2. Delta	5.8%	183,951	175,144	9.6%
3. American + US Airways	3.2%	180,725	173,877	9.4%
4. United + Continental	-7.1%	86,369	92,922	4.5%
5. Spirit	25.8%	36,454	28,982	1.9%
6. JetBlue	0.5%	23,502	23,384	1.2%
7. British Airways	1.7%	9,522	9,366	0.5%
8. All Other Airlines	-10.9%	<u>19,725</u>	<u>22,138</u>	1.0%
Total Commercial Passengers	2.7%	<u>1,914,769</u>	<u>1,864,067</u>	100.0%

\* Includes affiliated regional carriers

**Commercial Passenger Market Share Summary**

Total Passengers	Apr 2014	Apr 2013	Change
National	33.0%	32.6%	0.4%
Dulles	32.4%	33.2%	-0.7%
Baltimore	34.5%	34.2%	0.3%
<b>Domestic Passengers</b>	<b>Apr 2014</b>	<b>Apr 2013</b>	<b>Change</b>
National	37.0%	36.3%	0.7%
Dulles	25.2%	26.3%	-1.1%
Baltimore	37.8%	37.4%	0.4%
<b>International Passengers</b>	<b>Apr 2014</b>	<b>Apr 2013</b>	<b>Change</b>
National	4.9%	5.3%	-0.5%
Dulles	83.6%	84.4%	-0.8%
Baltimore	11.5%	10.3%	1.2%

Totals may not sum due to rounding.

**Metropolitan Washington Airports Authority**  
**Ronald Reagan Washington National Airport**  
**Monthly Air Traffic Summary Report**  
**April 2014**

Description	Enplaned	Deplaned	Total	Year Ago	% Change
<b>Aircraft Operations</b>					
Commercial:					
Air Carrier:					
Domestic			10,188	10,662	- 4.4
International			16	18	- 11.1
Transborder			0	219	- 100.0
<b>Total - Air Carrier</b>			<b>10,204</b>	<b>10,899</b>	<b>- 6.4</b>
Regional:					
Domestic			13,368	12,829	4.2
International			30	44	- 31.8
Transborder			748	530	41.1
<b>Total - Regional</b>			<b>14,146</b>	<b>13,403</b>	<b>5.5</b>
Commercial:					
Domestic			23,556	23,491	0.3
Transborder			794	811	- 2.1
<b>Total - Commercial</b>			<b>24,350</b>	<b>24,302</b>	<b>0.2</b>
Non-Commercial:					
General Aviation			333	501	- 33.5
Military			288	173	66.5
<b>Total - Non-Commercial</b>			<b>621</b>	<b>674</b>	<b>- 7.9</b>
<b>Grand Total - Aircraft Operations</b>			<b>24,971</b>	<b>24,976</b>	<b>0.0</b>
<b>Passengers</b>					
Commercial:					
Air Carrier Domestic:					
Scheduled	582,333	591,677	1,174,010	1,179,321	- 0.5
Chartered	0	0	0	0	0.0
<b>Total - Domestic Air Carrier</b>	<b>582,333</b>	<b>591,677</b>	<b>1,174,010</b>	<b>1,179,321</b>	<b>- 0.5</b>
Air Carrier International:					
Scheduled	1,082	861	1,943	1,904	2.0
Chartered	0	0	0	0	0.0
<b>Total - International Air Carrier</b>	<b>1,082</b>	<b>861</b>	<b>1,943</b>	<b>1,904</b>	<b>2.0</b>
Air Carrier Transborder:					
Scheduled	0	0	0	11,239	- 100.0
Chartered	0	0	0	0	0.0
<b>Total - Transborder Air Carrier</b>	<b>0</b>	<b>0</b>	<b>0</b>	<b>11,239</b>	<b>- 100.0</b>
<b>Total - Air Carrier</b>	<b>583,415</b>	<b>592,538</b>	<b>1,175,953</b>	<b>1,192,464</b>	<b>- 1.4</b>
Regional:					
Domestic	312,727	312,229	624,956	564,017	10.8
International	844	936	1,780	2,746	- 35.2
Transborder	15,204	14,284	29,488	18,320	61.0
<b>Total - Regional</b>	<b>328,775</b>	<b>327,449</b>	<b>656,224</b>	<b>585,083</b>	<b>12.2</b>
Commercial:					
Domestic	895,060	903,906	1,798,966	1,743,338	3.2
Transborder	17,130	16,081	33,211	34,209	- 2.9
<b>Total - Commercial</b>	<b>912,190</b>	<b>919,987</b>	<b>1,832,177</b>	<b>1,777,547</b>	<b>3.1</b>
Non-Commercial:					
General Aviation	782	760	1,542	1,224	26.0
Military	345	320	665	825	- 19.4
<b>Total - Non-Commercial</b>	<b>1,127</b>	<b>1,080</b>	<b>2,207</b>	<b>2,049</b>	<b>7.7</b>
<b>Grand Total - Passengers</b>	<b>913,317</b>	<b>921,067</b>	<b>1,834,384</b>	<b>1,779,596</b>	<b>3.1</b>

**Metropolitan Washington Airports Authority**  
**Ronald Reagan Washington National Airport**  
**Monthly Air Traffic Summary Report**  
**April 2014**

<b>Description</b>	<b>Enplaned</b>	<b>Deplaned</b>	<b>Total</b>	<b>Year Ago</b>	<b>% Change</b>
<b>Cargo - Tonnes</b>					
Mail:					
Domestic	35	1	36	1	4,144.8
International	0	0	0	0	0.0
Transborder	0	0	0	0	0.0
<b>Total - Mail:</b>	<b>35</b>	<b>1</b>	<b>36</b>	<b>1</b>	<b>4,144.8</b>
Freight + Express:					
Domestic	82	78	160	193	- 16.8
International	0	0	0	0	0.0
Transborder	0	0	0	0	8.3
<b>Total - Freight + Express:</b>	<b>83</b>	<b>78</b>	<b>161</b>	<b>193</b>	<b>- 16.7</b>
Mail Plus Freight + Express:					
Domestic	117	79	196	193	1.4
Transborder	0	0	0	0	8.3
<b>Grand Total - Cargo</b>	<b>117</b>	<b>79</b>	<b>196</b>	<b>194</b>	<b>1.4</b>

**NOTE:** Figures may not sum to total due to rounding.

**Metropolitan Washington Airports Authority**  
**Ronald Reagan Washington National Airport**  
**Monthly Air Traffic Summary Report**  
**January 2014 - April 2014**

<b>Description</b>	<b>Enplaned</b>	<b>Deplaned</b>	<b>Total</b>	<b>Year Ago</b>	<b>% Change</b>
<b>Aircraft Operations</b>					
Commercial:					
Air Carrier:					
Domestic			38,198	41,132	- 7.1
International			54	56	- 3.6
Transborder			0	835	- 100.0
<b>Total - Air Carrier</b>			<b>38,252</b>	<b>42,023</b>	<b>- 9.0</b>
Regional:					
Domestic			48,832	49,630	- 1.6
International			118	145	- 18.6
Transborder			2,836	2,420	17.2
<b>Total - Regional</b>			<b>51,786</b>	<b>52,195</b>	<b>- 0.8</b>
Commercial:					
Domestic			87,030	90,762	- 4.1
Transborder			3,008	3,456	- 13.0
<b>Total - Commercial</b>			<b>90,038</b>	<b>94,218</b>	<b>- 4.4</b>
Non-Commercial:					
General Aviation			1,551	2,088	- 25.7
Military			631	423	49.2
<b>Total - Non-Commercial</b>			<b>2,182</b>	<b>2,511</b>	<b>- 13.1</b>
<b>Grand Total - Aircraft Operations</b>			<b>92,220</b>	<b>96,729</b>	<b>- 4.7</b>
<b>Passengers</b>					
Commercial:					
Air Carrier Domestic:					
Scheduled	2,052,313	2,081,508	4,133,821	4,313,620	- 4.2
Chartered	0	0	0	0	0.0
<b>Total - Domestic Air Carrier</b>	<b>2,052,313</b>	<b>2,081,508</b>	<b>4,133,821</b>	<b>4,313,620</b>	<b>- 4.2</b>
Air Carrier International:					
Scheduled	3,349	3,052	6,401	6,871	- 6.8
Chartered	0	0	0	0	0.0
<b>Total - International Air Carrier</b>	<b>3,349</b>	<b>3,052</b>	<b>6,401</b>	<b>6,871</b>	<b>- 6.8</b>
Air Carrier Transborder:					
Scheduled	0	0	0	37,051	- 100.0
Chartered	0	0	0	0	0.0
<b>Total - Transborder Air Carrier</b>	<b>0</b>	<b>0</b>	<b>0</b>	<b>37,051</b>	<b>- 100.0</b>
<b>Total - Air Carrier</b>	<b>2,055,662</b>	<b>2,084,560</b>	<b>4,140,222</b>	<b>4,357,542</b>	<b>- 5.0</b>
Regional:					
Domestic	1,064,015	1,081,447	2,145,462	2,041,107	5.1
International	3,549	3,666	7,215	9,121	- 20.9
Transborder	53,375	51,609	104,984	74,323	41.3
<b>Total - Regional</b>	<b>1,120,939</b>	<b>1,136,722</b>	<b>2,257,661</b>	<b>2,124,551</b>	<b>6.3</b>
Commercial:					
Domestic	3,116,328	3,162,955	6,279,283	6,354,727	- 1.2
Transborder	60,273	58,327	118,600	127,366	- 6.9
<b>Total - Commercial</b>	<b>3,176,601</b>	<b>3,221,282</b>	<b>6,397,883</b>	<b>6,482,093</b>	<b>- 1.3</b>
Non-Commercial:					
General Aviation	2,954	2,888	5,842	4,185	39.6
Military	1,400	1,382	2,782	2,755	1.0
<b>Total - Non-Commercial</b>	<b>4,354</b>	<b>4,270</b>	<b>8,624</b>	<b>6,940</b>	<b>24.3</b>
<b>Grand Total - Passengers</b>	<b>3,180,955</b>	<b>3,225,552</b>	<b>6,406,507</b>	<b>6,489,033</b>	<b>- 1.3</b>

**Metropolitan Washington Airports Authority**  
**Ronald Reagan Washington National Airport**  
**Monthly Air Traffic Summary Report**  
**January 2014 - April 2014**

<b>Description</b>	<b>Enplaned</b>	<b>Deplaned</b>	<b>Total</b>	<b>Year Ago</b>	<b>% Change</b>
<b>Cargo - Tonnes</b>					
Mail:					
Domestic	89	11	101	1	7,581.6
International	0	0	0	0	0.0
Transborder	0	0	0	0	0.0
<b>Total - Mail:</b>	<b>89</b>	<b>11</b>	<b>101</b>	<b>1</b>	<b>7,581.6</b>
Freight + Express:					
Domestic	365	239	604	641	- 5.9
International	0	0	0	0	0.0
Transborder	0	0	0	1	- 30.0
<b>Total - Freight + Express:</b>	<b>365</b>	<b>239</b>	<b>604</b>	<b>642</b>	<b>- 5.9</b>
Mail Plus Freight + Express:					
Domestic	454	250	704	643	9.6
Transborder	0	0	0	1	- 30.0
<b>Grand Total - Cargo</b>	<b>455</b>	<b>250</b>	<b>705</b>	<b>643</b>	<b>9.5</b>

**NOTE:** Figures may not sum to total due to rounding.

**Metropolitan Washington Airports Authority**  
**Ronald Reagan Washington National Airport**  
**Monthly Air Traffic Summary Report**  
**May 2013 - April 2014**

<b>Description</b>	<b>Enplaned</b>	<b>Deplaned</b>	<b>Total</b>	<b>Year Ago</b>	<b>% Change</b>
<b>Aircraft Operations</b>					
Commercial:					
Air Carrier:					
Domestic			120,266	124,294	- 3.2
International			332	334	- 0.6
Transborder			273	2,630	- 89.6
<b>Total - Air Carrier</b>			<b>120,871</b>	<b>127,258</b>	<b>- 5.0</b>
Regional:					
Domestic			151,400	147,165	2.9
International			379	424	- 10.6
Transborder			8,408	8,059	4.3
<b>Total - Regional</b>			<b>160,187</b>	<b>155,648</b>	<b>2.9</b>
Commercial:					
Domestic			271,666	271,459	0.1
Transborder			9,392	11,447	- 18.0
<b>Total - Commercial</b>			<b>281,058</b>	<b>282,906</b>	<b>- 0.7</b>
Non-Commercial:					
General Aviation			4,520	6,260	- 27.8
Military			2,561	1,131	126.4
<b>Total - Non-Commercial</b>			<b>7,081</b>	<b>7,391</b>	<b>- 4.2</b>
<b>Grand Total - Aircraft Operations</b>			<b>288,139</b>	<b>290,297</b>	<b>- 0.7</b>
<b>Passengers</b>					
Commercial:					
Air Carrier Domestic:					
Scheduled	6,634,273	6,616,890	13,251,163	13,546,708	- 2.2
Chartered	0	0	0	0	0.0
<b>Total - Domestic Air Carrier</b>	<b>6,634,273</b>	<b>6,616,890</b>	<b>13,251,163</b>	<b>13,546,708</b>	<b>- 2.2</b>
Air Carrier International:					
Scheduled	15,881	14,828	30,709	33,282	- 7.7
Chartered	0	0	0	0	0.0
<b>Total - International Air Carrier</b>	<b>15,881</b>	<b>14,828</b>	<b>30,709</b>	<b>33,282</b>	<b>- 7.7</b>
Air Carrier Transborder:					
Scheduled	7,336	7,401	14,737	123,705	- 88.1
Chartered	0	0	0	0	0.0
<b>Total - Transborder Air Carrier</b>	<b>7,336</b>	<b>7,401</b>	<b>14,737</b>	<b>123,705</b>	<b>- 88.1</b>
<b>Total - Air Carrier</b>	<b>6,657,490</b>	<b>6,639,119</b>	<b>13,296,609</b>	<b>13,703,695</b>	<b>- 3.0</b>
Regional:					
Domestic	3,328,641	3,334,653	6,663,294	6,234,071	6.9
International	11,540	11,597	23,137	26,630	- 13.1
Transborder	164,114	161,307	325,421	220,273	47.7
<b>Total - Regional</b>	<b>3,504,295</b>	<b>3,507,557</b>	<b>7,011,852</b>	<b>6,480,974</b>	<b>8.2</b>
Commercial:					
Domestic	9,962,914	9,951,543	19,914,457	19,780,779	0.7
Transborder	198,871	195,133	394,004	403,890	- 2.4
<b>Total - Commercial</b>	<b>10,161,785</b>	<b>10,146,676</b>	<b>20,308,461</b>	<b>20,184,669</b>	<b>0.6</b>
Non-Commercial:					
General Aviation	8,415	8,192	16,607	12,928	28.5
Military	3,743	3,748	7,491	10,355	- 27.7
<b>Total - Non-Commercial</b>	<b>12,158</b>	<b>11,940</b>	<b>24,098</b>	<b>23,283</b>	<b>3.5</b>
<b>Grand Total - Passengers</b>	<b>10,173,943</b>	<b>10,158,616</b>	<b>20,332,559</b>	<b>20,207,952</b>	<b>0.6</b>



**Metropolitan Washington Airports Authority**  
**Ronald Reagan Washington National Airport**  
**Monthly Air Traffic Summary Report**  
**May 2013 - April 2014**

<b>Description</b>	<b>Enplaned</b>	<b>Deplaned</b>	<b>Total</b>	<b>Year Ago</b>	<b>% Change</b>
<b>Cargo - Tonnes</b>					
Mail:					
Domestic	119	36	155	7	2,116.7
International	0	0	0	0	0.0
Transborder	0	0	0	0	- 100.0
<b>Total - Mail:</b>	<b>119</b>	<b>36</b>	<b>155</b>	<b>7</b>	<b>2,109.5</b>
Freight + Express:					
Domestic	1,040	767	1,807	4,761	- 62.0
International	0	0	0	0	943.5
Transborder	1	1	2	1	36.9
<b>Total - Freight + Express:</b>	<b>1,041</b>	<b>767</b>	<b>1,809</b>	<b>4,762</b>	<b>- 62.0</b>
Mail Plus Freight + Express:					
Domestic	1,159	803	1,962	4,768	- 58.9
Transborder	1	1	2	1	42.4
<b>Grand Total - Cargo</b>	<b>1,160</b>	<b>803</b>	<b>1,964</b>	<b>4,769</b>	<b>- 58.8</b>

**NOTE:** Figures may not sum to total due to rounding.

**Metropolitan Washington Airports Authority**  
**Washington Dulles International Airport**  
**Monthly Air Traffic Summary Report**  
**April 2014**

<b>Description</b>	<b>Enplaned</b>	<b>Deplaned</b>	<b>Total</b>	<b>Year Ago</b>	<b>% Change</b>
<b>Aircraft Operations</b>					
Commercial:					
Air Carrier:					
Domestic			5,662	6,151	- 7.9
International			2,918	2,988	- 2.3
Transborder			0	0	0.0
<b>Total - Air Carrier</b>			<b>8,580</b>	<b>9,139</b>	<b>- 6.1</b>
Regional:					
Domestic			12,080	12,587	- 4.0
International			0	0	0.0
Transborder			805	880	- 8.5
<b>Total - Regional</b>			<b>12,885</b>	<b>13,467</b>	<b>- 4.3</b>
Commercial:					
Domestic			17,742	18,738	- 5.3
International			3,723	3,868	- 3.7
<b>Total - Commercial</b>			<b>21,465</b>	<b>22,606</b>	<b>- 5.0</b>
Non-Commercial:					
General Aviation			3,510	3,922	- 10.5
Military			89	83	7.2
<b>Total - Non-Commercial</b>			<b>3,599</b>	<b>4,005</b>	<b>- 10.1</b>
<b>Grand Total - Aircraft Operations</b>			<b>25,064</b>	<b>26,611</b>	<b>- 5.8</b>
<b>Passengers</b>					
Commercial:					
Air Carrier Domestic:					
Scheduled	355,751	362,300	718,051	748,084	- 4.0
Chartered	326	285	611	2,466	- 75.2
<b>Total - Domestic Air Carrier</b>	<b>356,077</b>	<b>362,585</b>	<b>718,662</b>	<b>750,550</b>	<b>- 4.2</b>
Air Carrier International:					
Scheduled	259,497	274,719	534,216	507,586	5.2
Chartered	457	527	984	1,015	- 3.1
<b>Total - International Air Carrier</b>	<b>259,954</b>	<b>275,246</b>	<b>535,200</b>	<b>508,601</b>	<b>5.2</b>
Air Carrier Transborder:					
Scheduled	0	0	0	0	0.0
Chartered	0	0	0	0	0.0
<b>Total - Transborder Air Carrier</b>	<b>0</b>	<b>0</b>	<b>0</b>	<b>0</b>	<b>0.0</b>
<b>Total - Air Carrier</b>	<b>616,031</b>	<b>637,831</b>	<b>1,253,862</b>	<b>1,259,151</b>	<b>- 0.4</b>
Regional:					
Domestic	256,211	251,931	508,142	513,903	- 1.1
International	0	0	0	0	0.0
Transborder	17,448	18,713	36,161	34,602	4.5
<b>Total - Regional</b>	<b>273,659</b>	<b>270,644</b>	<b>544,303</b>	<b>548,505</b>	<b>- 0.8</b>
Commercial:					
Domestic	612,288	614,516	1,226,804	1,264,453	- 3.0
International	277,402	293,959	571,361	543,203	5.2
<b>Total - Commercial</b>	<b>889,690</b>	<b>908,475</b>	<b>1,798,165</b>	<b>1,807,656</b>	<b>- 0.5</b>
Non-Commercial:					
General Aviation	6,901	7,221	14,122	14,967	- 5.6
Military	38	37	75	239	- 68.6
<b>Total - Non-Commercial</b>	<b>6,939</b>	<b>7,258</b>	<b>14,197</b>	<b>15,206</b>	<b>- 6.6</b>
<b>Grand Total - Passengers</b>	<b>896,629</b>	<b>915,733</b>	<b>1,812,362</b>	<b>1,822,862</b>	<b>- 0.6</b>

**Metropolitan Washington Airports Authority**  
**Washington Dulles International Airport**  
**Monthly Air Traffic Summary Report**  
**April 2014**

<b>Description</b>	<b>Enplaned</b>	<b>Deplaned</b>	<b>Total</b>	<b>Year Ago</b>	<b>% Change</b>
<b>Cargo - Tonnes</b>					
Mail:					
Domestic	210	422	632	432	46.4
International	199	52	251	319	- 21.4
<b>Total - Mail:</b>	<b>409</b>	<b>475</b>	<b>883</b>	<b>751</b>	<b>17.6</b>
Freight + Express:					
Domestic	3,730	3,120	6,850	7,704	- 11.1
International	5,750	8,578	14,327	12,792	12.0
<b>Total - Freight + Express:</b>	<b>9,479</b>	<b>11,698</b>	<b>21,177</b>	<b>20,496</b>	<b>3.3</b>
Mail Plus Freight + Express:					
Domestic	3,939	3,543	7,482	8,135	- 8.0
International	5,949	8,630	14,578	13,111	11.2
<b>Grand Total - Cargo</b>	<b>9,888</b>	<b>12,172</b>	<b>22,060</b>	<b>21,247</b>	<b>3.8</b>

**NOTE:** Figures may not sum to total due to rounding.

**Metropolitan Washington Airports Authority**  
**Washington Dulles International Airport**  
**Monthly Air Traffic Summary Report**  
**January 2014 - April 2014**

<b>Description</b>	<b>Enplaned</b>	<b>Deplaned</b>	<b>Total</b>	<b>Year Ago</b>	<b>% Change</b>
<b>Aircraft Operations</b>					
Commercial:					
Air Carrier:					
Domestic			21,369	23,188	- 7.8
International			11,285	11,215	0.6
Transborder			0	7	- 100.0
<b>Total - Air Carrier</b>			<b>32,654</b>	<b>34,410</b>	<b>- 5.1</b>
Regional:					
Domestic			43,631	46,752	- 6.7
International			155	0	100.0
Transborder			2,667	3,222	- 17.2
<b>Total - Regional</b>			<b>46,453</b>	<b>49,974</b>	<b>- 7.0</b>
Commercial:					
Domestic			65,000	69,940	- 7.1
International			14,107	14,444	- 2.3
<b>Total - Commercial</b>			<b>79,107</b>	<b>84,384</b>	<b>- 6.3</b>
Non-Commercial:					
General Aviation			12,504	13,685	- 8.6
Military			172	271	- 36.5
<b>Total - Non-Commercial</b>			<b>12,676</b>	<b>13,956</b>	<b>- 9.2</b>
<b>Grand Total - Aircraft Operations</b>			<b>91,783</b>	<b>98,340</b>	<b>- 6.7</b>
<b>Passengers</b>					
Commercial:					
Air Carrier Domestic:					
Scheduled	1,276,414	1,302,223	2,578,637	2,738,589	- 5.8
Chartered	867	904	1,771	6,369	- 72.2
<b>Total - Domestic Air Carrier</b>	<b>1,277,281</b>	<b>1,303,127</b>	<b>2,580,408</b>	<b>2,744,958</b>	<b>- 6.0</b>
Air Carrier International:					
Scheduled	933,911	982,974	1,916,885	1,880,636	1.9
Chartered	1,995	1,890	3,885	4,423	- 12.2
<b>Total - International Air Carrier</b>	<b>935,906</b>	<b>984,864</b>	<b>1,920,770</b>	<b>1,885,059</b>	<b>1.9</b>
Air Carrier Transborder:					
Scheduled	0	0	0	0	0.0
Chartered	0	0	0	105	- 100.0
<b>Total - Transborder Air Carrier</b>	<b>0</b>	<b>0</b>	<b>0</b>	<b>105</b>	<b>- 100.0</b>
<b>Total - Air Carrier</b>	<b>2,213,187</b>	<b>2,287,991</b>	<b>4,501,178</b>	<b>4,630,122</b>	<b>- 2.8</b>
Regional:					
Domestic	883,116	873,872	1,756,988	1,863,948	- 5.7
International	4,753	2,327	7,080	0	100.0
Transborder	55,194	66,246	121,440	127,585	- 4.8
<b>Total - Regional</b>	<b>943,063</b>	<b>942,445</b>	<b>1,885,508</b>	<b>1,991,533</b>	<b>- 5.3</b>
Commercial:					
Domestic	2,160,397	2,176,999	4,337,396	4,608,906	- 5.9
International	995,853	1,053,437	2,049,290	2,012,749	1.8
<b>Total - Commercial</b>	<b>3,156,250</b>	<b>3,230,436</b>	<b>6,386,686</b>	<b>6,621,655</b>	<b>- 3.5</b>
Non-Commercial:					
General Aviation	23,925	23,656	47,581	49,439	- 3.8
Military	114	114	228	441	- 48.3
<b>Total - Non-Commercial</b>	<b>24,039</b>	<b>23,770</b>	<b>47,809</b>	<b>49,880</b>	<b>- 4.2</b>
<b>Grand Total - Passengers</b>	<b>3,180,289</b>	<b>3,254,206</b>	<b>6,434,495</b>	<b>6,671,535</b>	<b>- 3.6</b>

**Metropolitan Washington Airports Authority**  
**Washington Dulles International Airport**  
**Monthly Air Traffic Summary Report**  
**January 2014 - April 2014**

<b>Description</b>	<b>Enplaned</b>	<b>Deplaned</b>	<b>Total</b>	<b>Year Ago</b>	<b>% Change</b>
<b>Cargo - Tonnes</b>					
Mail:					
Domestic	797	1,608	2,405	1,675	43.6
International	811	243	1,054	398	164.7
<b>Total - Mail:</b>	<b>1,609</b>	<b>1,851</b>	<b>3,459</b>	<b>2,073</b>	<b>66.8</b>
Freight + Express:					
Domestic	14,068	11,552	25,620	31,606	- 18.9
International	23,497	33,775	57,272	49,867	14.8
<b>Total - Freight + Express:</b>	<b>37,565</b>	<b>45,327</b>	<b>82,892</b>	<b>81,473</b>	<b>1.7</b>
Mail Plus Freight + Express:					
Domestic	14,865	13,160	28,025	33,281	- 15.8
International	24,308	34,017	58,326	50,265	16.0
<b>Grand Total - Cargo</b>	<b>39,174</b>	<b>47,177</b>	<b>86,351</b>	<b>83,546</b>	<b>3.4</b>

**NOTE:** Figures may not sum to total due to rounding.

**Metropolitan Washington Airports Authority**  
**Washington Dulles International Airport**  
**Monthly Air Traffic Summary Report**  
**May 2013 - April 2014**

<b>Description</b>	<b>Enplaned</b>	<b>Deplaned</b>	<b>Total</b>	<b>Year Ago</b>	<b>% Change</b>
<b>Aircraft Operations</b>					
Commercial:					
Air Carrier:					
Domestic			72,158	76,135	- 5.2
International			35,898	34,489	4.1
Transborder			6	14	- 57.1
<b>Total - Air Carrier</b>			<b>108,062</b>	<b>110,638</b>	<b>- 2.3</b>
Regional:					
Domestic			142,002	142,215	- 0.1
International			258	0	100.0
Transborder			10,000	10,992	- 9.0
<b>Total - Regional</b>			<b>152,260</b>	<b>153,207</b>	<b>- 0.6</b>
Commercial:					
Domestic			214,160	218,350	- 1.9
International			46,162	45,495	1.5
<b>Total - Commercial</b>			<b>260,322</b>	<b>263,845</b>	<b>- 1.3</b>
Non-Commercial:					
General Aviation			40,037	41,943	- 4.5
Military			885	795	11.3
<b>Total - Non-Commercial</b>			<b>40,922</b>	<b>42,738</b>	<b>- 4.2</b>
<b>Grand Total - Aircraft Operations</b>			<b>301,244</b>	<b>306,583</b>	<b>- 1.7</b>
<b>Passengers</b>					
Commercial:					
Air Carrier Domestic:					
Scheduled	4,346,029	4,400,118	8,746,147	9,230,683	- 5.2
Chartered	7,033	7,038	14,071	20,088	- 30.0
<b>Total - Domestic Air Carrier</b>	<b>4,353,062</b>	<b>4,407,156</b>	<b>8,760,218</b>	<b>9,250,771</b>	<b>- 5.3</b>
Air Carrier International:					
Scheduled	3,256,777	3,303,458	6,560,235	6,321,741	3.8
Chartered	5,489	5,654	11,143	13,044	- 14.6
<b>Total - International Air Carrier</b>	<b>3,262,266</b>	<b>3,309,112</b>	<b>6,571,378</b>	<b>6,334,785</b>	<b>3.7</b>
Air Carrier Transborder:					
Scheduled	0	0	0	0	0.0
Chartered	176	381	557	527	5.7
<b>Total - Transborder Air Carrier</b>	<b>176</b>	<b>381</b>	<b>557</b>	<b>527</b>	<b>5.7</b>
<b>Total - Air Carrier</b>	<b>7,615,504</b>	<b>7,716,649</b>	<b>15,332,153</b>	<b>15,586,083</b>	<b>- 1.6</b>
Regional:					
Domestic	2,907,644	2,872,704	5,780,348	6,002,217	- 3.7
International	7,074	4,782	11,856	0	100.0
Transborder	209,571	227,429	437,000	429,251	1.8
<b>Total - Regional</b>	<b>3,124,289</b>	<b>3,104,915</b>	<b>6,229,204</b>	<b>6,431,468</b>	<b>- 3.1</b>
Commercial:					
Domestic	7,260,706	7,279,860	14,540,566	15,252,988	- 4.7
International	3,479,087	3,541,704	7,020,791	6,764,563	3.8
<b>Total - Commercial</b>	<b>10,739,793</b>	<b>10,821,564</b>	<b>21,561,357</b>	<b>22,017,551</b>	<b>- 2.1</b>
Non-Commercial:					
General Aviation	74,002	73,726	147,728	149,492	- 1.2
Military	472	468	940	737	27.5
<b>Total - Non-Commercial</b>	<b>74,474</b>	<b>74,194</b>	<b>148,668</b>	<b>150,229</b>	<b>- 1.0</b>
<b>Grand Total - Passengers</b>	<b>10,814,267</b>	<b>10,895,758</b>	<b>21,710,025</b>	<b>22,167,780</b>	<b>- 2.1</b>

**Metropolitan Washington Airports Authority**  
**Washington Dulles International Airport**  
**Monthly Air Traffic Summary Report**  
**May 2013 - April 2014**

<b>Description</b>	<b>Enplaned</b>	<b>Deplaned</b>	<b>Total</b>	<b>Year Ago</b>	<b>% Change</b>
<b>Cargo - Tonnes</b>					
Mail:					
Domestic	2,218	4,443	6,661	4,436	50.1
International	5,983	4,388	10,371	2,584	301.3
<b>Total - Mail:</b>	<b>8,201</b>	<b>8,831</b>	<b>17,032</b>	<b>7,020</b>	<b>142.6</b>
Freight + Express:					
Domestic	43,831	37,771	81,602	102,207	- 20.2
International	59,470	98,062	157,532	152,592	3.2
<b>Total - Freight + Express:</b>	<b>103,301</b>	<b>135,833</b>	<b>239,134</b>	<b>254,799</b>	<b>- 6.1</b>
Mail Plus Freight + Express:					
Domestic	46,049	42,214	88,262	106,643	- 17.2
International	65,454	102,450	167,904	155,176	8.2
<b>Grand Total - Cargo</b>	<b>111,502</b>	<b>144,664</b>	<b>256,166</b>	<b>261,819</b>	<b>- 2.2</b>

**NOTE:** Figures may not sum to total due to rounding.