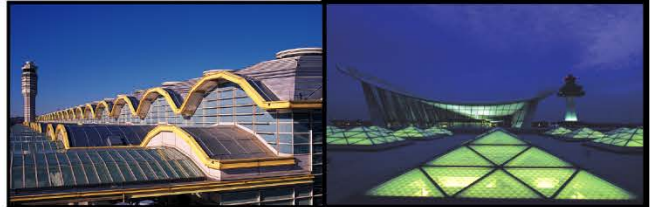


May
2015

Air Traffic Statistics



METROPOLITAN WASHINGTON AIRPORTS AUTHORITY

Air Traffic Summary May 2015

		Passenger Activity (in Millions)									
		Current Month			Year-to-Date			Last 12 Months			
		DCA	IAD	System	DCA	IAD	System	DCA	IAD	System	
Commercial	Dom	Passengers	2.1	1.3	3.4	8.9	5.5	14.4	21.1	14.2	35.3
		% Change	9.4%	2.4%	6.5%	9.0%	(1.8%)	4.6%	5.9%	(2.0%)	2.6%
Commercial	Int'l	Passengers	< 0.1	0.6	0.7	0.2	2.6	2.8	0.4	7.0	7.4
		% Change	(6.2%)	(1.1%)	(1.4%)	(1.3%)	(3.4%)	(3.3%)	(0.3%)	(0.7%)	(0.7%)
Total		Passengers	2.1	2.0	4.1	9.1	8.2	17.3	21.5	21.4	42.9
		% Change	9.1%	1.2%	5.1%	8.8%	(2.3%)	3.3%	5.8%	(1.5%)	2.0%

Note: System totals may not sum due to rounding.

U.S. industry average passenger enplanements as reported by Airlines for America (A4A):

Enplanements	Current Month	Year-to-Date
System	3.9%	3.8%
Domestic	4.0%	3.8%
International	3.3%	3.7%

Ronald Reagan Washington National Airport

- Domestic commercial passenger activity increased 9.4% in May 2015 compared to May 2014. Significant activity by carrier follows:

Airline	Comments
American + US Airways	<ul style="list-style-type: none"> 3.4% decrease from May 2014 in passenger activity due to slot divestitures in June and July 2014 Increased service to Los Angeles in June 2014; St. Louis, Tampa, and Memphis in April 2015; Dayton and Louisville in May 2015
Southwest + AirTran	<ul style="list-style-type: none"> 155.9% increase in passenger activity from slots divested by American New service to Chicago Midway, Nashville, and New Orleans in August 2014; Tampa, and Dallas Love in October 2014; Akron, and Indianapolis in November 2014; and Columbus in April 2015 Increased service to Houston and St. Louis in November 2014 Reduced service to Milwaukee in November 2014 and to Atlanta in April 2015
Virgin America	<ul style="list-style-type: none"> 221.7% increase in passenger activity with new service to Dallas Love in October 2014
JetBlue	<ul style="list-style-type: none"> 47.4% increase in passenger activity from slots divested by American New service to Charleston and Hartford in June 2014; and Jacksonville, West Palm Beach, and Fort Myers in December 2014 Increased service to Tampa in July 2014, and Ft. Lauderdale and Orlando in January 2015

- Transborder passenger traffic decreased 6.2% in May 2015 as a result of discontinued service by American + US Airways to Montreal and Halifax, and reductions to Toronto in March 2015.
- The combined American + US Airways operations, including its regional affiliates, had the largest commercial passenger market share with 50.6%, a decrease compared to 57.6% in May 2014.

Washington Dulles International Airport

Domestic Passenger Activity

- Domestic commercial passenger activity increased 2.4% in May 2015 compared to May 2014. Significant activity by carrier follows:

Airline	Comments
United	<ul style="list-style-type: none">2.9% decrease in passenger activityDiscontinued service to 10 domestic destinations, including four now being served by Silver AirwaysReduced service to 31 destinations partially reflecting seasonalityIncreased service to St. Thomas and Newark in April 2015; Detroit, Kansas City, and Los Angeles in May 2015
American+US Airways	<ul style="list-style-type: none">4.2% decrease due to reduced service to Los Angeles in June 2014
JetBlue	<ul style="list-style-type: none">29.9% decline due to discontinued service to Oakland in July 2014, Long Beach in September 2014, and reduced service to Boston in November 2014Increased service to New York JFK in January 2015
Southwest + AirTran	<ul style="list-style-type: none">8.8% decline due to reduced service to Chicago Midway in November 2014New service to Las Vegas and San Diego, and increased service to Denver began in November 2014
Frontier	<ul style="list-style-type: none">New service began in August 2014
Alaska	<ul style="list-style-type: none">New service began in March 2015

International Passenger Activity

- May 2015 international commercial passenger traffic decreased 1.1%. Significant activity by carrier follows:

Airline	Comments
United	<ul style="list-style-type: none">7.0% decrease in passenger activityReduced service to Guatemala, San Jose (Costa Rica), and Toronto in March 2015Resumed service to Dublin, Manchester, and Montego Bay in March 2015; Rome in April 2015; and Madrid in May 2015 after discontinuing them for the winter seasonIncreased service to Cancun and Punta Cana in March 2015New service to San Jose del Cabo in March 2015
Air France	<ul style="list-style-type: none">26.6% decrease due to reduced capacity as a result of fewer operations
TACA+Avianca	<ul style="list-style-type: none">12.6% decline due to reduced service to El Salvador in February 2015
Lufthansa	<ul style="list-style-type: none">11.9% increase due to increased capacity in April 2015
Icelandair	<ul style="list-style-type: none">46.4% increase due to increased service in May 2015
Austrian	<ul style="list-style-type: none">27.7% increase due to increased capacity as a result of aircraft up-gauge in April 2015
Aer Lingus	<ul style="list-style-type: none">New service began in May 2015

- United Airlines, including its regional affiliates, had the largest commercial passenger market share of 61.8%, a decrease compared to 65.0% in May 2014.

Cargo Activity

- For the month of May 2015, total cargo decreased 3.8% at Dulles from a year earlier. Domestic cargo increased 2.3% primarily due to an increase on United (28.9%) that offset the decline on FedEx (-6.2%).
- International cargo declined 6.9% led by Etihad (-57.8%), Emirates (-39.5%), and KLM (-47.4%). The carriers with the largest increases in international cargo were Austrian (56.1%) and Lufthansa (10.5%) as well as new service by Air China and Aer Lingus.

Baltimore-Washington International Airport

- Current month commercial passenger activity increased 4.3% from May 2014, outpacing activity at Dulles by 156k commercial passengers (7.9%), and National by 45k commercial passengers (2.1%).
- Southwest's passenger market share totaled 71.1%, an increase from 70.7% in May 2014.
- Cargo activity at BWI totaled 10.0k metric tonnes, an 11.7% increase from a year earlier primarily as a result of increases on DHL (90.7%), United (258.3%), and Southwest (13.1%).

Ronald Reagan Washington National Airport
 Air Traffic Schedule Activity
 May 2015 vs. May 2014

May 2015:	Daily Departures	Airlines*	Unduplicated Destinations
Domestic			
Passenger service information -			
Mainline	214	9	--
Regional Affiliate	<u>167</u>	<u>10</u>	--
Domestic Total	381	19	80
Transborder/International			
Passenger service information -			
Mainline	1	2	--
Regional Affiliate	<u>10</u>	<u>4</u>	--
Transborder/International Total	11	6	4

May 2014:	Daily Departures	Airlines*	Unduplicated Destinations
Domestic			
Passenger service information -			
Mainline	170	9	--
Regional Affiliate	<u>219</u>	<u>9</u>	--
Domestic Total	389	18	86
Transborder/International			
Passenger service information -			
Mainline	0	1	--
Regional Affiliate	<u>13</u>	<u>3</u>	--
Transborder/International Total	13	4	5

* The following airlines are counted as one airline:
 Southwest and AirTran
 American and US Airways
 Regional carriers flying for multiple mainline carriers

Source: DIIO, June 30, 2015

Washington Dulles International Airport
Air Traffic Schedule Activity
May 2015 vs. May 2014

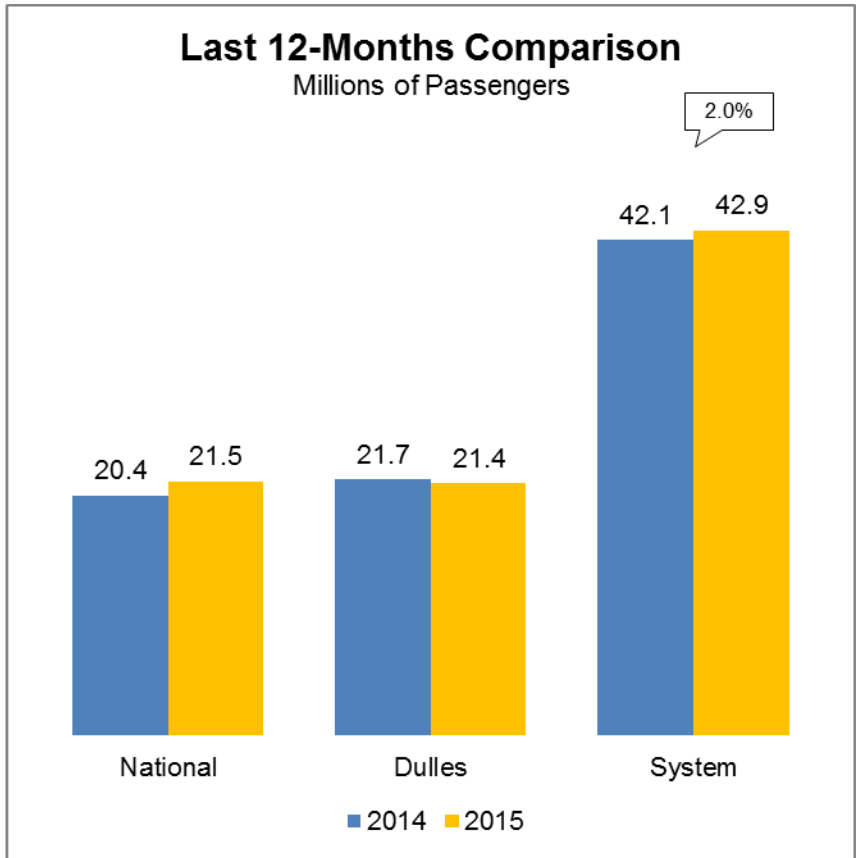
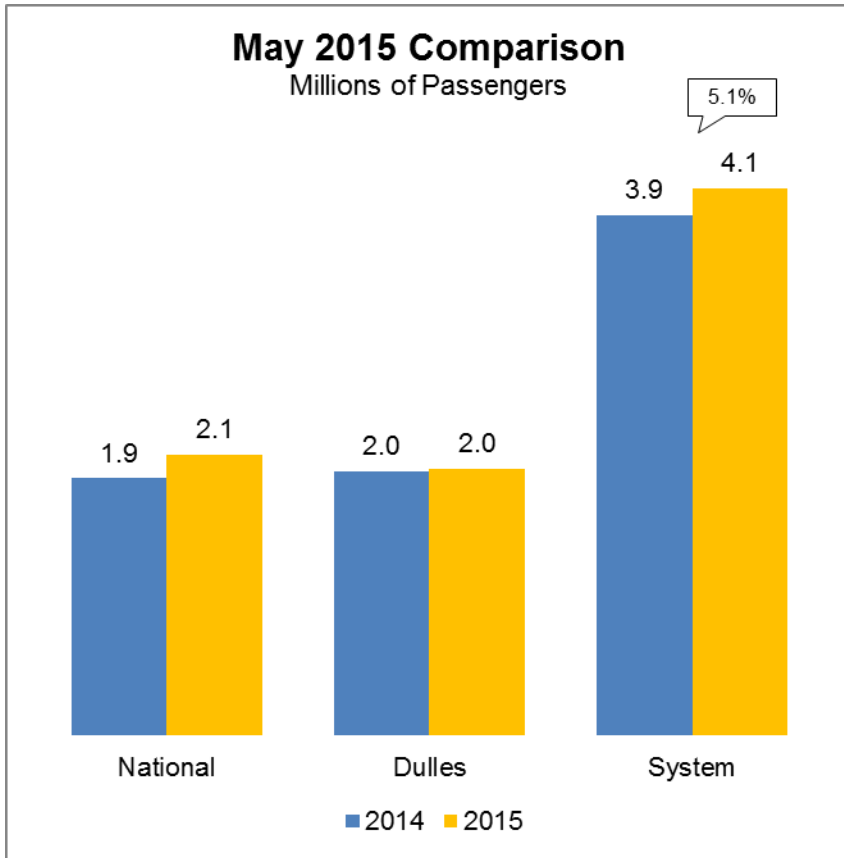
May 2015:	Daily Departures	Airlines*	Unduplicated Destinations
Domestic			
Passenger service information -			
Mainline	109	9	--
Regional Affiliate	<u>150</u>	<u>11</u>	--
Domestic Total	259	20	79
Transborder/International			
Passenger service information -			
Mainline	53	26	--
Regional Affiliate	<u>11</u>	<u>2</u>	--
Transborder/International Total	64	28	46

May 2014:	Daily Departures	Airlines*	Unduplicated Destinations
Domestic			
Passenger service information -			
Mainline	97	7	--
Regional Affiliate	<u>197</u>	<u>13</u>	--
Domestic Total	294	20	82
Transborder/International			
Passenger service information -			
Mainline	53	24	--
Regional Affiliate	<u>12</u>	<u>4</u>	--
Transborder/International Total	65	28	44

* The following airlines are counted as one airline:
Pacific Wings and Sun Air International
Avianca and TACA
American Airlines and US Airways
Austrian and Tyrolean
Regional carriers flying for multiple mainline carriers

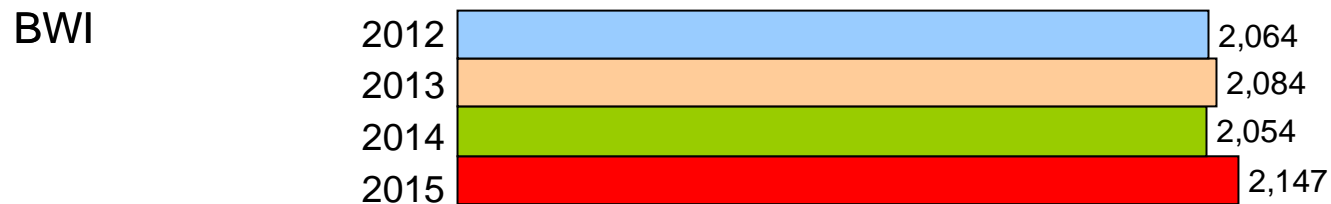
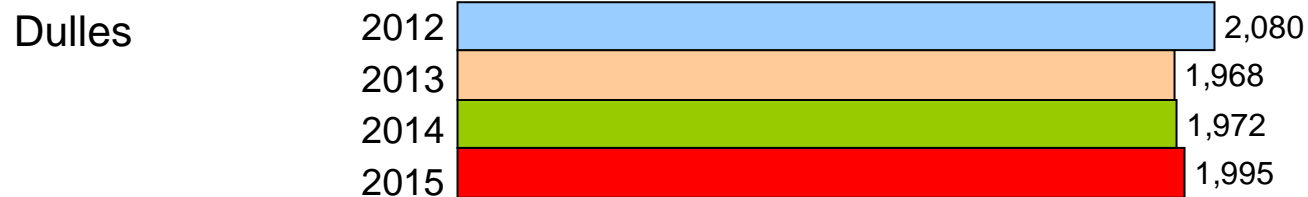
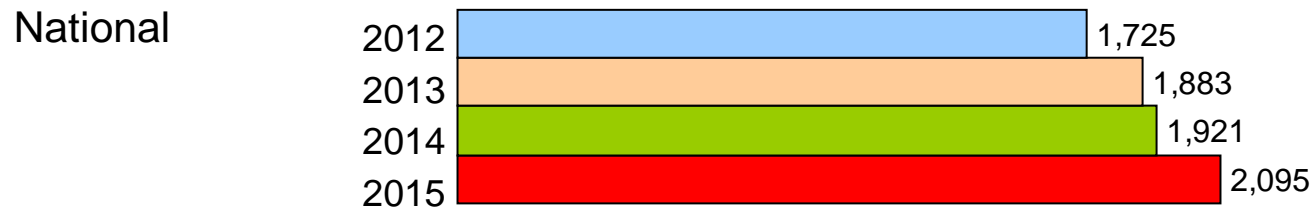
Source: DIIO, June 30, 2015

Passenger Trends

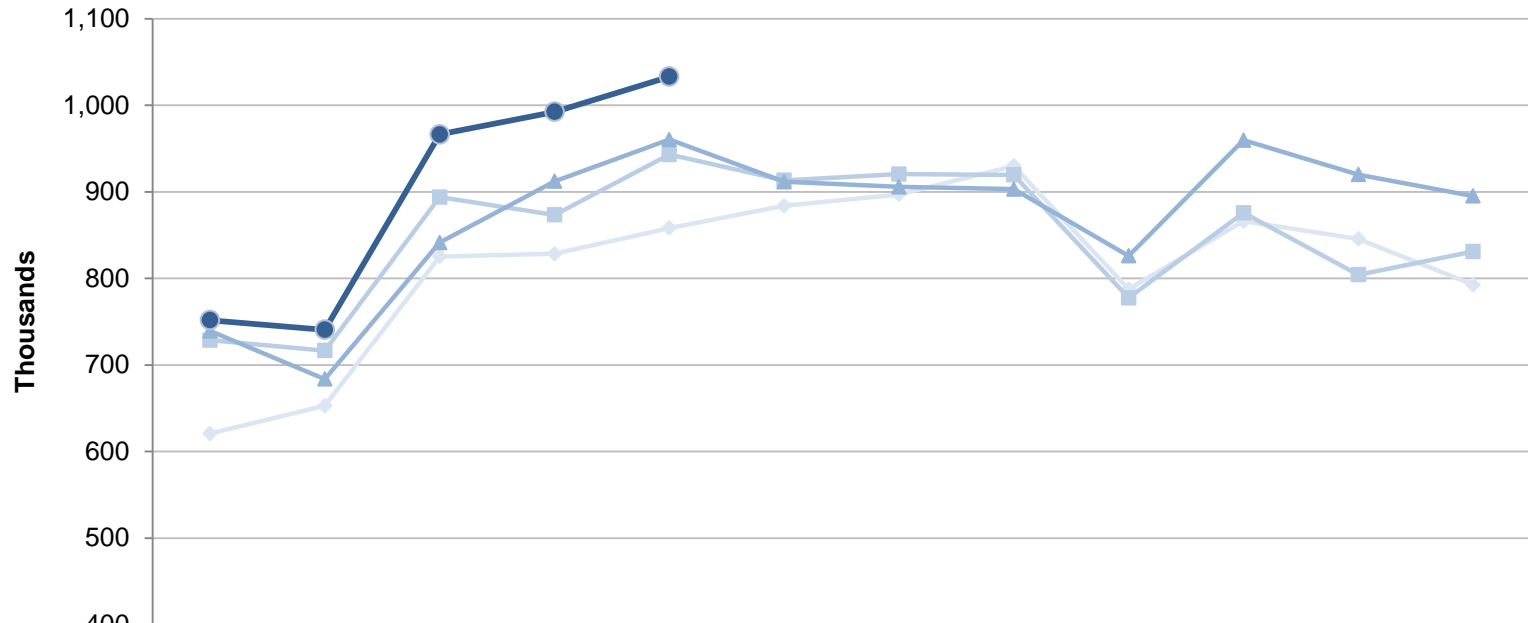


* System totals may not sum due to rounding.

Total Passengers Four Year Comparison of the Month of May (Thousands)

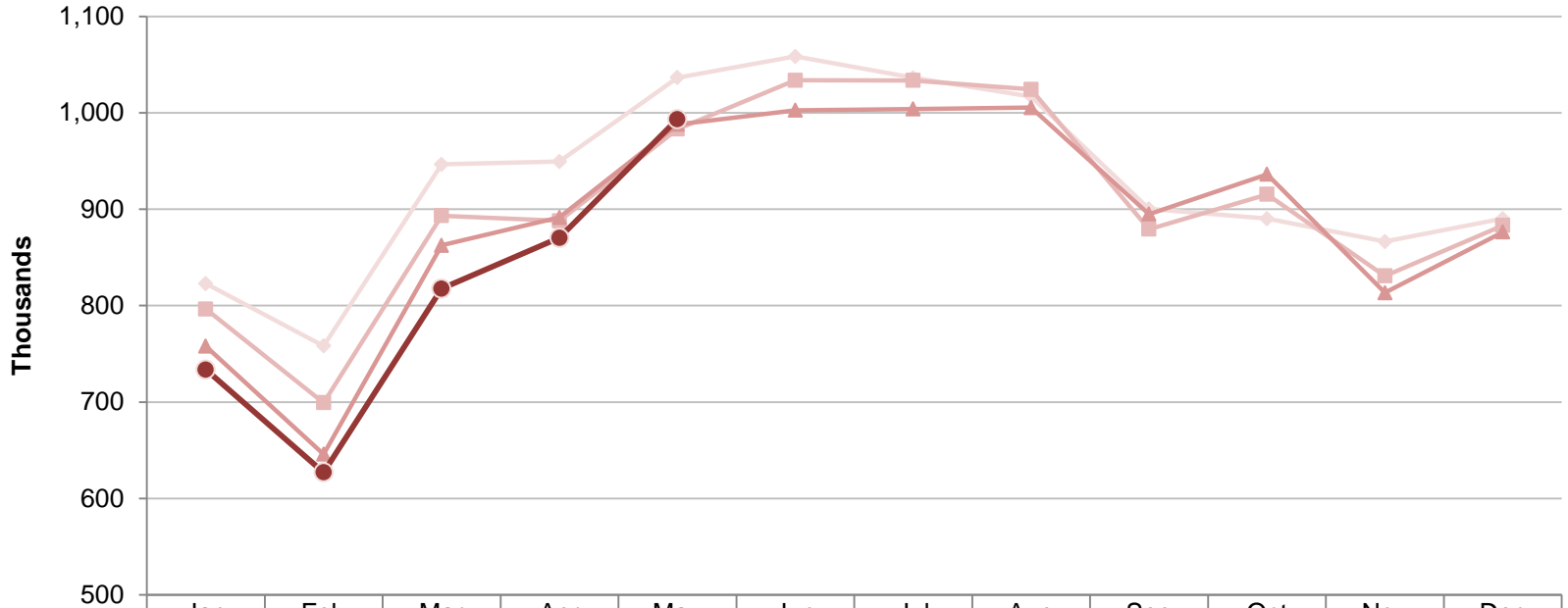


Ronald Reagan Washington National Airport
 Total Commercial Passenger Enplanements
 Calendar Years 2012 - 2015



	Jan	Feb	Mar	Apr	May	Jun	Jul	Aug	Sep	Oct	Nov	Dec
2012	621	653	825	829	858	884	897	930	787	866	846	793
2013	729	717	894	873	943	913	921	920	777	876	804	831
2014	739	684	841	912	960	912	906	903	826	960	920	895
2015	752	741	966	992	1033							

Dulles International Airport
Total Commercial Passenger Enplanements
Calendar Years 2012 - 2015



	Jan	Feb	Mar	Apr	May	Jun	Jul	Aug	Sep	Oct	Nov	Dec
◆ 2012	823	758	947	950	1,037	1,059	1,036	1,017	900	890	866	890
■ 2013	796	699	893	888	983	1,034	1,034	1,024	879	915	831	883
▲ 2014	758	646	863	892	988	1,003	1,004	1,006	895	936	813	876
● 2015	734	627	818	870	993							

**Commercial Passenger Market Share and Percent Change of Top Airlines
in the Washington and Baltimore Region**

May 2015				May 2014			
National	Top Airlines*	Percent Change	Passengers	Market Share	Top Airlines*	Passengers	Market Share
	1. American + US Airways	-4.1%	1,059,622	50.6%	1. American + US Airways	1,104,730	57.6%
	2. Southwest + Airtran	155.9%	286,520	13.7%	2. Delta	299,678	15.6%
	3. Delta	-8.0%	275,567	13.2%	3. United	180,696	9.4%
	4. United	-4.7%	172,124	8.2%	4. JetBlue	113,901	5.9%
	5. JetBlue	51.0%	171,934	8.2%	5. Southwest + Airtran	111,948	5.8%
	6. Alaska	1.7%	38,358	1.8%	6. Alaska	37,700	2.0%
	7. Frontier	-5.6%	28,266	1.4%	7. Frontier	29,949	1.6%
	8. Air Canada	6.6%	23,876	1.1%	8. Air Canada	22,388	1.2%
	9. Virgin America	221.7%	23,446	1.1%	9. Sun Country	10,302	0.5%
	10. Sun Country	25.0%	12,875	0.6%	10. Virgin America	7,289	0.4%
Total Commercial Passengers	9.1%	<u>2,092,878</u>	100.0%	Total Commercial Passengers	<u>1,918,581</u>	100.0%	
Dulles	Top Airlines*	Percent Change	Passengers	Market Share	Top Airlines*	Passengers	Market Share
	1. United	-3.8%	1,224,733	61.8%	1. United	1,272,550	65.0%
	2. American + US Airways	-4.2%	94,176	4.8%	2. American + US Airways	98,355	5.0%
	3. Delta	5.1%	82,437	4.2%	3. Delta	78,401	4.0%
	4. Frontier	N/A	65,289	3.3%	4. Southwest	53,188	2.7%
	5. Lufthansa	11.9%	49,150	2.5%	5. Lufthansa	43,911	2.2%
	6. Southwest	-8.8%	48,486	2.4%	6. JetBlue	41,764	2.1%
	7. British Airways	0.6%	36,734	1.9%	7. British Airways	36,532	1.9%
	8. Virgin America	0.7%	34,593	1.7%	8. Virgin America	34,353	1.8%
	9. JetBlue	-29.9%	29,263	1.5%	9. TACA + Avianca	28,254	1.4%
	10. TACA + Avianca	-12.6%	24,687	1.2%	10. Air France	27,654	1.4%
	11. All Other Airlines	20.5%	<u>291,905</u>	14.7%	11. All Other Airlines	<u>242,310</u>	12.4%
Total Commercial Passengers	1.2%	<u>1,981,453</u>	100.0%	Total Commercial Passengers	<u>1,957,272</u>	100.0%	
Baltimore	Top Airlines*	Percent Change	Passengers	Market Share	Top Airlines*	Passengers	Market Share
	1. Southwest + Airtran	4.9%	1,519,659	71.1%	1. Southwest + Airtran	1,448,247	70.7%
	2. American + US Airways	-3.2%	186,755	8.7%	2. American + US Airways	192,848	9.4%
	3. Delta	-9.9%	171,411	8.0%	3. Delta	190,279	9.3%
	4. United + Continental	-1.6%	92,078	4.3%	4. United + Continental	93,551	4.6%
	5. Spirit	28.8%	77,733	3.6%	5. Spirit	60,352	2.9%
	6. JetBlue	-1.7%	30,689	1.4%	6. JetBlue	31,215	1.5%
	7. British Airways	-2.6%	10,239	0.5%	7. British Airways	10,515	0.5%
	8. All Other Airlines	123.4%	<u>49,111</u>	2.3%	8. All Other Airlines	<u>21,988</u>	1.1%
Total Commercial Passengers	4.3%	<u>2,137,675</u>	100.0%	Total Commercial Passengers	<u>2,048,995</u>	100.0%	

* Includes affiliated regional carriers

Commercial Passenger Market Share Summary

Total Passengers	May 2015	May 2014	Change
National	33.7%	32.4%	1.3%
Dulles	31.9%	33.0%	-1.1%
Baltimore	34.4%	34.6%	-0.2%
Domestic Passengers	May 2015	May 2014	Change
National	37.9%	36.5%	1.4%
Dulles	24.7%	25.3%	-0.7%
Baltimore	37.5%	38.2%	-0.7%
International Passengers	May 2015	May 2014	Change
National	4.4%	4.8%	-0.4%
Dulles	82.4%	85.1%	-2.7%
Baltimore	13.2%	10.1%	3.1%

Totals may not sum due to rounding.

Metropolitan Washington Airports Authority
Ronald Reagan Washington National Airport
Monthly Air Traffic Summary Report
May 2015

Description	Enplaned	Deplaned	Total	Year Ago	% Change
Aircraft Operations					
Commercial:					
Air Carrier:					
Domestic			13,179	10,365	27.1
International			78	16	387.5
Transborder			0	0	0.0
Total - Air Carrier			13,257	10,381	27.7
Regional:					
Domestic			10,922	13,179	- 17.1
International			15	38	- 60.5
Transborder			591	756	- 21.8
Total - Regional			11,528	13,973	- 17.5
Commercial:					
Domestic			24,101	23,544	2.4
Transborder			684	810	- 15.6
Total - Commercial			24,785	24,354	1.8
Non-Commercial:					
General Aviation			279	343	- 18.7
Military			340	247	37.7
Total - Non-Commercial			619	590	4.9
Grand Total - Aircraft Operations			25,404	24,944	1.8
Passengers					
Commercial:					
Air Carrier Domestic:					
Scheduled	740,889	767,103	1,507,992	1,241,505	21.5
Chartered	145	145	290	0	100.0
Total - Domestic Air Carrier	741,034	767,248	1,508,282	1,241,505	21.5
Air Carrier International:					
Scheduled	2,562	2,972	5,534	1,709	223.8
Chartered	0	0	0	0	0.0
Total - International Air Carrier	2,562	2,972	5,534	1,709	223.8
Air Carrier Transborder:					
Scheduled	0	0	0	0	0.0
Chartered	0	0	0	0	0.0
Total - Transborder Air Carrier	0	0	0	0	0.0
Total - Air Carrier	743,596	770,220	1,513,816	1,243,214	21.8
Regional:					
Domestic	274,233	275,889	550,122	640,329	- 14.1
International	319	355	674	2,168	- 68.9
Transborder	14,967	13,299	28,266	32,870	- 14.0
Total - Regional	289,519	289,543	579,062	675,367	- 14.3
Commercial:					
Domestic	1,015,267	1,043,137	2,058,404	1,881,834	9.4
Transborder	17,848	16,626	34,474	36,747	- 6.2
Total - Commercial	1,033,115	1,059,763	2,092,878	1,918,581	9.1
Non-Commercial:					
General Aviation	911	875	1,786	1,558	14.6
Military	315	320	635	692	- 8.2
Total - Non-Commercial	1,226	1,195	2,421	2,250	7.6
Grand Total - Passengers	1,034,341	1,060,958	2,095,299	1,920,831	9.1

Metropolitan Washington Airports Authority
Ronald Reagan Washington National Airport
Monthly Air Traffic Summary Report
May 2015

Description	Enplaned	Deplaned	Total	Year Ago	% Change
Cargo - Tonnes					
Mail:					
Domestic	27	1	27	30	- 8.1
International	0	0	0	0	0.0
Transborder	0	0	0	0	0.0
Total - Mail:	27	1	27	30	- 8.1
Freight + Express:					
Domestic	120	72	192	149	29.0
International	0	0	0	0	0.0
Transborder	0	0	0	0	100.0
Total - Freight + Express:	120	72	192	149	29.1
Mail Plus Freight + Express:					
Domestic	147	72	219	179	22.8
Transborder	0	0	0	0	100.0
Grand Total - Cargo	147	72	219	179	22.9

NOTE: Figures may not sum to total due to rounding.

Metropolitan Washington Airports Authority
Ronald Reagan Washington National Airport
Monthly Air Traffic Summary Report
January 2015 - May 2015

Description	Enplaned	Deplaned	Total	Year Ago	% Change
Aircraft Operations					
Commercial:					
Air Carrier:					
Domestic			60,811	48,563	25.2
International			326	70	365.7
Transborder			0	0	0.0
Total - Air Carrier			61,137	48,633	25.7
Regional:					
Domestic			53,115	62,011	- 14.3
International			110	156	- 29.5
Transborder			2,930	3,592	- 18.4
Total - Regional			56,155	65,759	- 14.6
Commercial:					
Domestic			113,926	110,574	3.0
Transborder			3,366	3,818	- 11.8
Total - Commercial			117,292	114,392	2.5
Non-Commercial:					
General Aviation			1,311	1,894	- 30.8
Military			1,400	878	59.5
Total - Non-Commercial			2,711	2,772	- 2.2
Grand Total - Aircraft Operations			120,003	117,164	2.4
Passengers					
Commercial:					
Air Carrier Domestic:					
Scheduled	3,184,330	3,245,334	6,429,664	5,375,326	19.6
Chartered	145	145	290	0	100.0
Total - Domestic Air Carrier	3,184,475	3,245,479	6,429,954	5,375,326	19.6
Air Carrier International:					
Scheduled	10,854	11,879	22,733	8,110	180.3
Chartered	0	0	0	0	0.0
Total - International Air Carrier	10,854	11,879	22,733	8,110	180.3
Air Carrier Transborder:					
Scheduled	0	0	0	0	0.0
Chartered	0	0	0	0	0.0
Total - Transborder Air Carrier	0	0	0	0	0.0
Total - Air Carrier	3,195,329	3,257,358	6,452,687	5,383,436	19.9
Regional:					
Domestic	1,222,621	1,243,567	2,466,188	2,785,791	- 11.5
International	2,982	3,121	6,103	9,383	- 35.0
Transborder	63,311	61,196	124,507	137,854	- 9.7
Total - Regional	1,288,914	1,307,884	2,596,798	2,933,028	- 11.5
Commercial:					
Domestic	4,407,096	4,489,046	8,896,142	8,161,117	9.0
Transborder	77,147	76,196	153,343	155,347	- 1.3
Total - Commercial	4,484,243	4,565,242	9,049,485	8,316,464	8.8
Non-Commercial:					
General Aviation	4,234	4,127	8,361	7,400	13.0
Military	1,658	1,581	3,239	3,474	- 6.8
Total - Non-Commercial	5,892	5,708	11,600	10,874	6.7
Grand Total - Passengers	4,490,135	4,570,950	9,061,085	8,327,338	8.8

Metropolitan Washington Airports Authority
Ronald Reagan Washington National Airport
Monthly Air Traffic Summary Report
January 2015 - May 2015

Description	Enplaned	Deplaned	Total	Year Ago	% Change
Cargo - Tonnes					
Mail:					
Domestic	113	1	114	130	- 12.7
International	0	0	0	0	100.0
Transborder	0	0	0	0	0.0
Total - Mail:	113	1	114	130	- 12.7
Freight + Express:					
Domestic	722	422	1,144	752	52.0
International	0	0	0	0	0.0
Transborder	0	0	0	0	- 22.7
Total - Freight + Express:	722	422	1,144	753	52.0
Mail Plus Freight + Express:					
Domestic	835	423	1,258	883	42.5
Transborder	0	0	0	0	- 19.0
Grand Total - Cargo	835	423	1,258	883	42.4

NOTE: Figures may not sum to total due to rounding.

Metropolitan Washington Airports Authority
Ronald Reagan Washington National Airport
Monthly Air Traffic Summary Report
June 2014 - May 2015

Description	Enplaned	Deplaned	Total	Year Ago	% Change
Aircraft Operations					
Commercial:					
Air Carrier:					
Domestic			138,804	119,587	16.1
International			950	314	202.5
Transborder			0	137	- 100.0
Total - Air Carrier			139,754	120,038	16.4
Regional:					
Domestic			132,336	151,541	- 12.7
International			116	371	- 68.7
Transborder			7,287	8,553	- 14.8
Total - Regional			139,739	160,465	- 12.9
Commercial:					
Domestic			271,140	271,128	0.0
Transborder			8,353	9,375	- 10.9
Total - Commercial			279,493	280,503	- 0.4
Non-Commercial:					
General Aviation			3,157	4,465	- 29.3
Military			3,369	2,525	33.4
Total - Non-Commercial			6,526	6,990	- 6.6
Grand Total - Aircraft Operations			286,019	287,493	- 0.5
Passengers					
Commercial:					
Air Carrier Domestic:					
Scheduled	7,513,392	7,400,126	14,913,518	13,236,738	12.7
Chartered	145	145	290	0	100.0
Total - Domestic Air Carrier	7,513,537	7,400,271	14,913,808	13,236,738	12.7
Air Carrier International:					
Scheduled	35,522	35,935	71,457	29,395	143.1
Chartered	0	0	0	0	0.0
Total - International Air Carrier	35,522	35,935	71,457	29,395	143.1
Air Carrier Transborder:					
Scheduled	0	0	0	7,838	- 100.0
Chartered	0	0	0	0	0.0
Total - Transborder Air Carrier	0	0	0	7,838	- 100.0
Total - Air Carrier	7,549,059	7,436,206	14,985,265	13,273,971	12.9
Regional:					
Domestic	3,095,264	3,115,411	6,210,675	6,716,065	- 7.5
International	3,111	3,252	6,363	22,552	- 71.8
Transborder	158,137	156,965	315,102	334,155	- 5.7
Total - Regional	3,256,512	3,275,628	6,532,140	7,072,772	- 7.6
Commercial:					
Domestic	10,608,801	10,515,682	21,124,483	19,952,803	5.9
Transborder	196,770	196,152	392,922	393,940	- 0.3
Total - Commercial	10,805,571	10,711,834	21,517,405	20,346,743	5.8
Non-Commercial:					
General Aviation	10,052	9,800	19,852	16,483	20.4
Military	3,478	3,399	6,877	7,253	- 5.2
Total - Non-Commercial	13,530	13,199	26,729	23,736	12.6
Grand Total - Passengers	10,819,101	10,725,033	21,544,134	20,370,479	5.8

Metropolitan Washington Airports Authority
Ronald Reagan Washington National Airport
Monthly Air Traffic Summary Report
June 2014 - May 2015

Description	Enplaned	Deplaned	Total	Year Ago	% Change
Cargo - Tonnes					
Mail:					
Domestic	303	19	322	185	74.1
International	0	0	0	0	100.0
Transborder	0	0	0	0	0.0
Total - Mail:	303	19	322	185	74.1
Freight + Express:					
Domestic	1,322	852	2,173	1,748	24.3
International	0	0	0	0	- 100.0
Transborder	1	0	1	2	- 47.6
Total - Freight + Express:	1,322	852	2,174	1,750	24.3
Mail Plus Freight + Express:					
Domestic	1,625	870	2,495	1,933	29.1
Transborder	1	0	1	2	- 49.7
Grand Total - Cargo	1,625	870	2,496	1,934	29.0

NOTE: Figures may not sum to total due to rounding.

Metropolitan Washington Airports Authority
Washington Dulles International Airport
Monthly Air Traffic Summary Report
May 2015

Description	Enplaned	Deplaned	Total	Year Ago	% Change
Aircraft Operations					
Commercial:					
Air Carrier:					
Domestic			7,182	5,916	21.4
International			3,185	3,096	2.9
Transborder			0	0	0.0
Total - Air Carrier			10,367	9,012	15.0
Regional:					
Domestic			9,837	12,211	- 19.4
International			297	35	748.6
Transborder			168	861	- 80.5
Total - Regional			10,302	13,107	- 21.4
Commercial:					
Domestic			17,019	18,127	- 6.1
International			3,650	3,992	- 8.6
Total - Commercial			20,669	22,119	- 6.6
Non-Commercial:					
General Aviation			3,580	3,843	- 6.8
Military			23	85	- 72.9
Total - Non-Commercial			3,603	3,928	- 8.3
Grand Total - Aircraft Operations			24,272	26,047	- 6.8
Passengers					
Commercial:					
Air Carrier Domestic:					
Scheduled	424,245	434,492	858,737	771,091	11.4
Chartered	202	411	613	3,811	- 83.9
Total - Domestic Air Carrier	424,447	434,903	859,350	774,902	10.9
Air Carrier International:					
Scheduled	319,879	299,339	619,218	610,428	1.4
Chartered	412	572	984	0	100.0
Total - International Air Carrier	320,291	299,911	620,202	610,428	1.6
Air Carrier Transborder:					
Scheduled	0	0	0	0	0.0
Chartered	0	0	0	0	0.0
Total - Transborder Air Carrier	0	0	0	0	0.0
Total - Air Carrier	744,738	734,814	1,479,552	1,385,330	6.8
Regional:					
Domestic	238,138	242,384	480,522	533,464	- 9.9
International	6,205	6,931	13,136	3,228	306.9
Transborder	4,381	3,862	8,243	35,250	- 76.6
Total - Regional	248,724	253,177	501,901	571,942	- 12.2
Commercial:					
Domestic	662,585	677,287	1,339,872	1,308,366	2.4
International	330,877	310,704	641,581	648,906	- 1.1
Total - Commercial	993,462	987,991	1,981,453	1,957,272	1.2
Non-Commercial:					
General Aviation	6,904	6,913	13,817	14,413	- 4.1
Military	86	86	172	88	95.5
Total - Non-Commercial	6,990	6,999	13,989	14,501	- 3.5
Grand Total - Passengers	1,000,452	994,990	1,995,442	1,971,773	1.2

Metropolitan Washington Airports Authority
Washington Dulles International Airport
Monthly Air Traffic Summary Report
May 2015

Description	Enplaned	Deplaned	Total	Year Ago	% Change
Cargo - Tonnes					
Mail:					
Domestic	550	366	916	662	38.4
International	90	194	284	270	5.1
Total - Mail:	641	560	1,201	932	28.8
Freight + Express:					
Domestic	3,684	3,115	6,799	6,883	- 1.2
International	4,998	8,827	13,825	14,881	- 7.1
Total - Freight + Express:	8,682	11,942	20,624	21,764	- 5.2
Mail Plus Freight + Express:					
Domestic	4,234	3,482	7,715	7,545	2.3
International	5,088	9,021	14,109	15,152	- 6.9
Grand Total - Cargo	9,322	12,502	21,824	22,696	- 3.8

NOTE: Figures may not sum to total due to rounding.

Metropolitan Washington Airports Authority
Washington Dulles International Airport
Monthly Air Traffic Summary Report
January 2015 - May 2015

Description	Enplaned	Deplaned	Total	Year Ago	% Change
Aircraft Operations					
Commercial:					
Air Carrier:					
Domestic			30,857	27,285	13.1
International			14,094	14,381	- 2.0
Transborder			2	0	100.0
Total - Air Carrier			44,953	41,666	7.9
Regional:					
Domestic			45,745	55,842	- 18.1
International			1,487	190	682.6
Transborder			879	3,528	- 75.1
Total - Regional			48,111	59,560	- 19.2
Commercial:					
Domestic			76,602	83,127	- 7.8
International			16,462	18,099	- 9.0
Total - Commercial			93,064	101,226	- 8.1
Non-Commercial:					
General Aviation			15,737	16,347	- 3.7
Military			181	257	- 29.6
Total - Non-Commercial			15,918	16,604	- 4.1
Grand Total - Aircraft Operations			108,982	117,830	- 7.5
Passengers					
Commercial:					
Air Carrier Domestic:					
Scheduled	1,709,124	1,750,224	3,459,348	3,349,728	3.3
Chartered	2,127	1,188	3,315	5,582	- 40.6
Total - Domestic Air Carrier	1,711,251	1,751,412	3,462,663	3,355,310	3.2
Air Carrier International:					
Scheduled	1,236,419	1,269,136	2,505,555	2,530,109	- 1.0
Chartered	2,354	2,311	4,665	3,885	20.1
Total - International Air Carrier	1,238,773	1,271,447	2,510,220	2,533,994	- 0.9
Air Carrier Transborder:					
Scheduled	0	0	0	0	0.0
Chartered	0	64	64	0	100.0
Total - Transborder Air Carrier	0	64	64	0	100.0
Total - Air Carrier	2,950,024	3,022,923	5,972,947	5,889,304	1.4
Regional:					
Domestic	1,044,185	1,038,963	2,083,148	2,290,452	- 9.1
International	29,606	33,773	63,379	10,308	514.9
Transborder	18,242	17,881	36,123	156,690	- 76.9
Total - Regional	1,092,033	1,090,617	2,182,650	2,457,450	- 11.2
Commercial:					
Domestic	2,755,436	2,790,375	5,545,811	5,645,762	- 1.8
International	1,286,621	1,323,165	2,609,786	2,700,992	- 3.4
Total - Commercial	4,042,057	4,113,540	8,155,597	8,346,754	- 2.3
Non-Commercial:					
General Aviation	32,086	31,106	63,192	61,994	1.9
Military	308	282	590	316	86.7
Total - Non-Commercial	32,394	31,388	63,782	62,310	2.4
Grand Total - Passengers	4,074,451	4,144,928	8,219,379	8,409,064	- 2.3

Metropolitan Washington Airports Authority
Washington Dulles International Airport
Monthly Air Traffic Summary Report
January 2015 - May 2015

Description	Enplaned	Deplaned	Total	Year Ago	% Change
Cargo - Tonnes					
Mail:					
Domestic	1,655	1,647	3,302	3,067	7.6
International	569	804	1,373	1,324	3.7
Total - Mail:	2,224	2,451	4,675	4,392	6.5
Freight + Express:					
Domestic	18,102	14,847	32,949	32,503	1.4
International	26,204	45,081	71,285	72,190	- 1.3
Total - Freight + Express:	44,305	59,928	104,233	104,693	- 0.4
Mail Plus Freight + Express:					
Domestic	19,756	16,494	36,250	35,570	1.9
International	26,773	45,886	72,658	73,514	- 1.2
Grand Total - Cargo	46,529	62,380	108,909	109,084	- 0.2

NOTE: Figures may not sum to total due to rounding.

Metropolitan Washington Airports Authority
Washington Dulles International Airport
Monthly Air Traffic Summary Report
June 2014 - May 2015

Description	Enplaned	Deplaned	Total	Year Ago	% Change
Aircraft Operations					
Commercial:					
Air Carrier:					
Domestic			75,122	71,648	4.8
International			35,640	35,817	- 0.5
Transborder			2	4	- 50.0
Total - Air Carrier			110,764	107,469	3.1
Regional:					
Domestic			123,950	141,372	- 12.3
International			1,657	293	465.5
Transborder			5,344	9,924	- 46.2
Total - Regional			130,951	151,589	- 13.6
Commercial:					
Domestic			199,072	213,020	- 6.5
International			42,643	46,038	- 7.4
Total - Commercial			241,715	259,058	- 6.7
Non-Commercial:					
General Aviation			38,355	40,171	- 4.5
Military			464	860	- 46.0
Total - Non-Commercial			38,819	41,031	- 5.4
Grand Total - Aircraft Operations			280,534	300,089	- 6.5
Passengers					
Commercial:					
Air Carrier Domestic:					
Scheduled	4,359,906	4,429,696	8,789,602	8,722,935	0.8
Chartered	5,988	5,111	11,099	15,056	- 26.3
Total - Domestic Air Carrier	4,365,894	4,434,807	8,800,701	8,737,991	0.7
Air Carrier International:					
Scheduled	3,314,566	3,359,820	6,674,386	6,592,839	1.2
Chartered	5,684	5,739	11,423	10,096	13.1
Total - International Air Carrier	3,320,250	3,365,559	6,685,809	6,602,935	1.3
Air Carrier Transborder:					
Scheduled	0	0	0	0	0.0
Chartered	0	64	64	307	- 79.2
Total - Transborder Air Carrier	0	64	64	307	- 79.2
Total - Air Carrier	7,686,144	7,800,430	15,486,574	15,341,233	0.9
Regional:					
Domestic	2,735,115	2,689,651	5,424,766	5,775,799	- 6.1
International	36,713	39,925	76,638	15,084	408.1
Transborder	117,406	123,844	241,250	436,072	- 44.7
Total - Regional	2,889,234	2,853,420	5,742,654	6,226,955	- 7.8
Commercial:					
Domestic	7,101,009	7,124,458	14,225,467	14,513,790	- 2.0
International	3,474,369	3,529,392	7,003,761	7,054,398	- 0.7
Total - Commercial	10,575,378	10,653,850	21,229,228	21,568,188	- 1.6
Non-Commercial:					
General Aviation	78,133	74,322	152,455	148,061	3.0
Military	437	428	865	792	9.2
Total - Non-Commercial	78,570	74,750	153,320	148,853	3.0
Grand Total - Passengers	10,653,948	10,728,600	21,382,548	21,717,041	- 1.5

Metropolitan Washington Airports Authority
Washington Dulles International Airport
Monthly Air Traffic Summary Report
June 2014 - May 2015

Description	Enplaned	Deplaned	Total	Year Ago	% Change
Cargo - Tonnes					
Mail:					
Domestic	3,222	4,174	7,397	6,833	8.2
International	2,604	1,678	4,283	10,322	- 58.5
Total - Mail:	5,827	5,853	11,679	17,156	- 31.9
Freight + Express:					
Domestic	44,873	37,544	82,417	80,584	2.3
International	62,035	111,447	173,482	159,689	8.6
Total - Freight + Express:	106,908	148,990	255,899	240,273	6.5
Mail Plus Freight + Express:					
Domestic	48,095	41,718	89,813	87,417	2.7
International	64,640	113,125	177,765	170,012	4.6
Grand Total - Cargo	112,735	154,843	267,578	257,429	3.9

NOTE: Figures may not sum to total due to rounding.