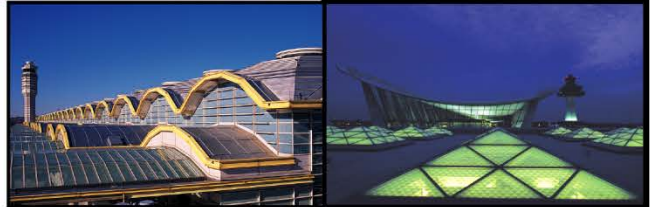


August  
2015

# Air Traffic Statistics



METROPOLITAN WASHINGTON AIRPORTS AUTHORITY

## Air Traffic Summary August 2015

		Passenger Activity (in Millions)									
		Current Month			Year-to-Date			Last 12 Months			
		DCA	IAD	System	DCA	IAD	System	DCA	IAD	System	
<b>Commercial</b>	<b>Dom</b>	Passengers	2.0	1.4	3.4	15.0	9.7	24.6	21.9	14.5	36.4
		% Change	13.2%	6.4%	10.3%	11.1%	1.9%	7.3%	9.9%	1.6%	6.4%
<b>Commercial</b>	<b>Int'l</b>	Passengers	< 0.1	0.7	0.8	0.3	4.8	5.0	0.4	6.9	7.3
		% Change	(4.7%)	(4.0%)	(4.0%)	0.1%	(3.2%)	(3.1%)	0.1%	(2.8%)	(2.6%)
<b>Total</b>		<b>Passengers</b>	<b>2.1</b>	<b>2.1</b>	<b>4.2</b>	<b>15.3</b>	<b>14.5</b>	<b>29.8</b>	<b>22.3</b>	<b>21.6</b>	<b>43.9</b>
		<b>% Change</b>	<b>12.8%</b>	<b>2.4%</b>	<b>7.3%</b>	<b>10.9%</b>	<b>0.1%</b>	<b>5.4%</b>	<b>9.7%</b>	<b>0.1%</b>	<b>4.8%</b>

Note: System totals may not sum due to rounding.

U.S. industry average passenger enplanements as reported by Airlines for America (A4A):

Enplanements	Current Month	Year-to-Date
System	5.5%	4.4%
Domestic	5.8%	4.5%
International	4.0%	4.1%

### Ronald Reagan Washington National Airport

- Domestic commercial passenger activity increased 13.2% in August 2015 compared to August 2014. Significant activity by carrier follows:

Airline	Comments
American + US Airways	<ul style="list-style-type: none"> <li>6.0% increase in passenger activity from August 2014</li> <li>Increased service to Manchester in November 2014; Raleigh/Durham in January 2015; Boston in February 2015; Burlington in March 2015; Memphis in April 2015; Dayton and Louisville in May 2015; Albany, Bangor, Fort Myers, Greenville/Spartanburg, Huntsville/Decatur, Miami, Portland, Pensacola, and Providence in June 2015</li> </ul>
Southwest + AirTran	<ul style="list-style-type: none"> <li>78.0% increase in passenger activity from slots divested by American</li> <li>New service to Tampa and Dallas Love in October 2014; Akron and Indianapolis in November 2014; Columbus in April 2015; and Fort Lauderdale in August 2015</li> <li>Increased service to Houston and St. Louis in November 2014, and Chicago and Kansas in August 2015</li> <li>Reduced service to Milwaukee in November 2014, Atlanta in January 2015, New Orleans in June 2015, and Nashville in August 2015</li> </ul>
Virgin America	<ul style="list-style-type: none"> <li>191.6% increase in passenger activity with new service to Dallas Love in October 2014</li> </ul>
JetBlue	<ul style="list-style-type: none"> <li>19.2% increase in passenger activity from slots divested by American</li> <li>New service to Fort Myers, Jacksonville, and West Palm Beach in December 2014; and Nantucket in July 2015</li> <li>Increased service to Ft. Lauderdale and Orlando in January 2015</li> <li>Reduced service to Boston in January 2015</li> </ul>

- Transborder passenger traffic decreased 4.7% in August 2015 due to reduced service to Toronto by American + US Airways.
- The combined American + US Airways operations, including its regional affiliates, had the largest commercial passenger market share of 50.9%, a decrease compared to 54.4% in August 2014.

## Washington Dulles International Airport

### Domestic Passenger Activity

- Domestic commercial passenger activity increased 6.4% in August 2015 compared to August 2014.

Significant activity by carrier follows:

<b>Airline</b>	<b>Comments</b>
United	<ul style="list-style-type: none"><li>• 1.0% increase in passenger activity due to an increase in load factors that outpaced the decrease in capacity</li><li>• Increased service to Tampa in March 2015; Newark and Charlotte in April 2015; Detroit, Portland, San Juan in July 2015; and State College in August 2015</li><li>• Discontinued service to 10 domestic destinations, including five now being served by Silver Airways</li><li>• Reduced service for 33 destinations based on demand throughout the system</li></ul>
Delta	<ul style="list-style-type: none"><li>• 7.0% increase due to increased service to New York JFK and Atlanta in March 2015 and Minneapolis in June 2015</li></ul>
Frontier	<ul style="list-style-type: none"><li>• 449.8% increase as service began in mid-August 2014</li></ul>
JetBlue	<ul style="list-style-type: none"><li>• 28.6% decline due to discontinued service to Long Beach in September 2014 and reduced service to Boston in November 2014</li><li>• Increased service to New York JFK in January 2015</li></ul>
Alaska	<ul style="list-style-type: none"><li>• New service began in March 2015</li></ul>

### International Passenger Activity

- August 2015 international commercial passenger traffic decreased 4.0%. Significant activity by carrier follows:

<b>Airline</b>	<b>Comments</b>
United	<ul style="list-style-type: none"><li>• 13.5% decrease in passenger activity</li><li>• Reduced service to San Jose (Costa Rica) and Guatemala in November 2014; Toronto in December 2014; Aruba, Montego Bay, and Montreal in May 2015; Ottawa and Vancouver in June 2015</li><li>• Discontinued service to Nassau in September 2014 and Halifax in October 2014</li><li>• Increased service to Paris in June 2015 and Cancun in July 2015</li></ul>
TACA + Avianca	<ul style="list-style-type: none"><li>• 24.1% decline due to reduced service to El Salvador in February 2015</li></ul>
Lufthansa	<ul style="list-style-type: none"><li>• 10.2% increase due to increased capacity as a result of aircraft up-gauging in May 2015</li></ul>
Icelandair	<ul style="list-style-type: none"><li>• 42.9% increase due to increased service in May 2015</li></ul>
Etihad	<ul style="list-style-type: none"><li>• 20.9% decline due to aircraft down-gauging</li></ul>
Aer Lingus	<ul style="list-style-type: none"><li>• New service began in May 2015</li></ul>

- United Airlines, including its regional affiliates, had the largest commercial passenger market share of 60.4%, a decrease compared to 63.5% in August 2014.

### Cargo Activity

- For the month of August 2015, total cargo decreased 3.9% at Dulles from a year earlier. Domestic cargo increased 3.8% primarily due to an increase on United (44.1%).
- International cargo declined 8.1% led by KLM (-78.7%), United (-7.5%), Etihad (-50.5%), and British Airways (-20.1%). The carriers with the largest increases in international cargo were Korean (99.3%) as well as UPS and Kalitta, neither of which had international cargo activity in August 2014, and new service by Aer Lingus.

## Baltimore-Washington International Airport

- Current month commercial passenger activity increased 5.0% from August 2014, outpacing activity at Dulles by 96k commercial passengers (4.6%), and National by 142k commercial passengers (6.9%).
- Southwest's passenger market share totaled 68.4%, a decline from 70.3% in August 2014.
- Cargo activity at BWI totaled 9.6k metric tonnes, a 9.2% (810 tonnes) increase from a year earlier primarily as a result of increases on DHL (439 tonnes) and Southwest (119 tonnes). FedEx increased 2.2%.

**Ronald Reagan Washington National Airport**  
 Air Traffic Schedule Activity  
 August 2015 vs. August 2014

August 2015:	Daily Departures	Airlines*	Unduplicated Destinations
<b>Domestic</b>			
<b>Passenger service information -</b>			
Mainline	208	9	--
Regional Affiliate	<u>167</u>	<u>9</u>	--
Domestic Total	375	18	82
<b>Transborder/International</b>			
<b>Passenger service information -</b>			
Mainline	2	2	--
Regional Affiliate	<u>10</u>	<u>4</u>	--
Transborder/International Total	12	6	5

August 2014:	Daily Departures	Airlines*	Unduplicated Destinations
<b>Domestic</b>			
<b>Passenger service information -</b>			
Mainline	178	9	--
Regional Affiliate	<u>192</u>	<u>9</u>	--
Domestic Total	370	18	82
<b>Transborder/International</b>			
<b>Passenger service information -</b>			
Mainline	2	2	--
Regional Affiliate	<u>10</u>	<u>3</u>	--
Transborder/International Total	12	5	5

\* The following airlines are counted as one airline:  
 Southwest and AirTran  
 American and US Airways  
 Regional carriers flying for multiple mainline carriers

Source: DIIO, September 24, 2015

## Washington Dulles International Airport

Air Traffic Schedule Activity  
August 2015 vs. August 2014

August 2015:	Daily Departures	Airlines*	Unduplicated Destinations
<b>Domestic</b>			
<b>Passenger service information -</b>			
Mainline	109	9	--
Regional Affiliate	<u>144</u>	<u>8</u>	--
Domestic Total	253	17	80
<b>Transborder/International</b>			
<b>Passenger service information -</b>			
Mainline	57	26	--
Regional Affiliate	<u>11</u>	<u>2</u>	--
Transborder/International Total	68	28	47

August 2014:	Daily Departures	Airlines*	Unduplicated Destinations
<b>Domestic</b>			
<b>Passenger service information -</b>			
Mainline	99	8	--
Regional Affiliate	<u>184</u>	<u>12</u>	--
Domestic Total	283	20	80
<b>Transborder/International</b>			
<b>Passenger service information -</b>			
Mainline	57	25	--
Regional Affiliate	<u>13</u>	<u>6</u>	--
Transborder/International Total	70	31	48

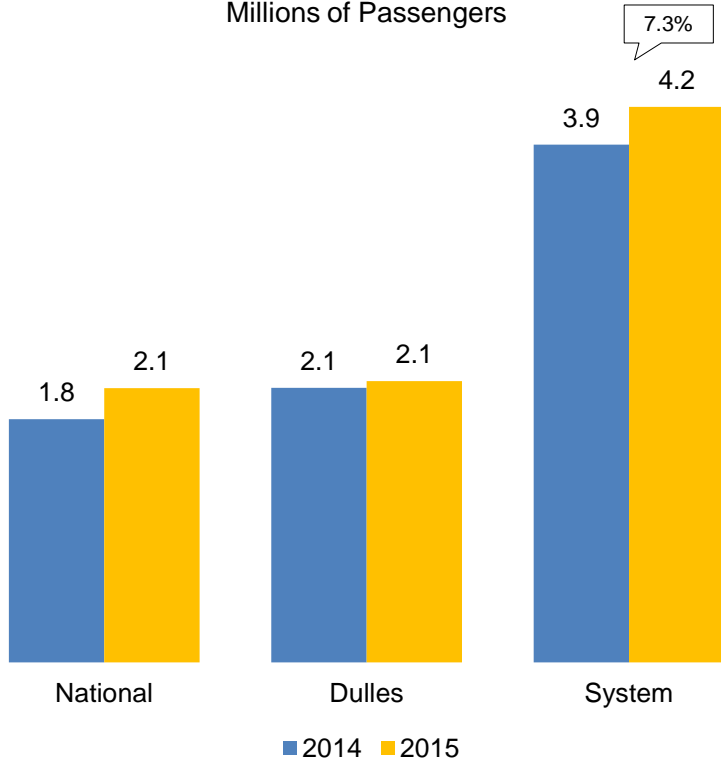
\* The following airlines are counted as one airline:  
 Pacific Wings and Sun Air International  
 Avianca and TACA  
 American Airlines and US Airways  
 Austrian and Tyrolean  
 Regional carriers flying for multiple mainline carriers

Source: DIIO, September 24, 2015

# Passenger Trends

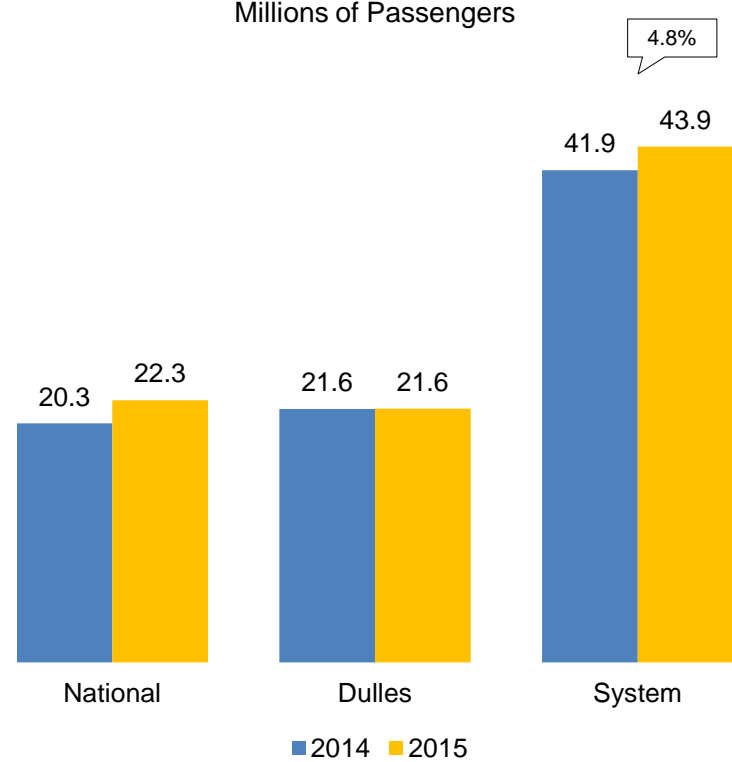
## August 2015 Comparison

Millions of Passengers



## Last 12-Months Comparison

Millions of Passengers

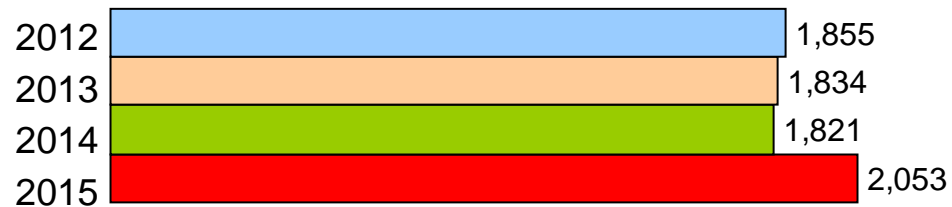


\* System totals may not sum due to rounding.

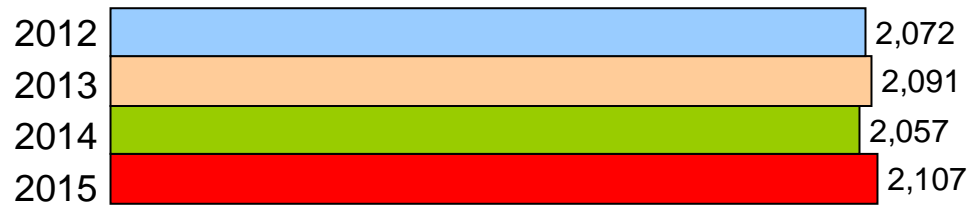
# Total Passengers

## Four Year Comparison of the Month of August (Thousands)

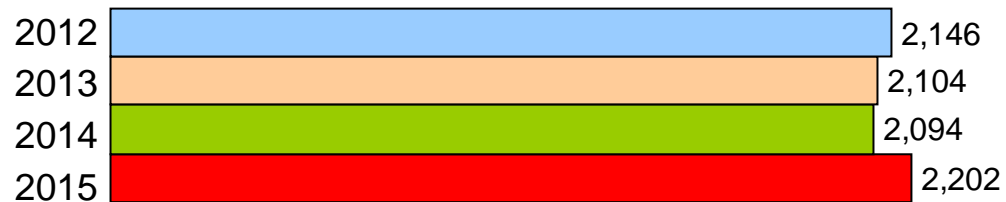
National



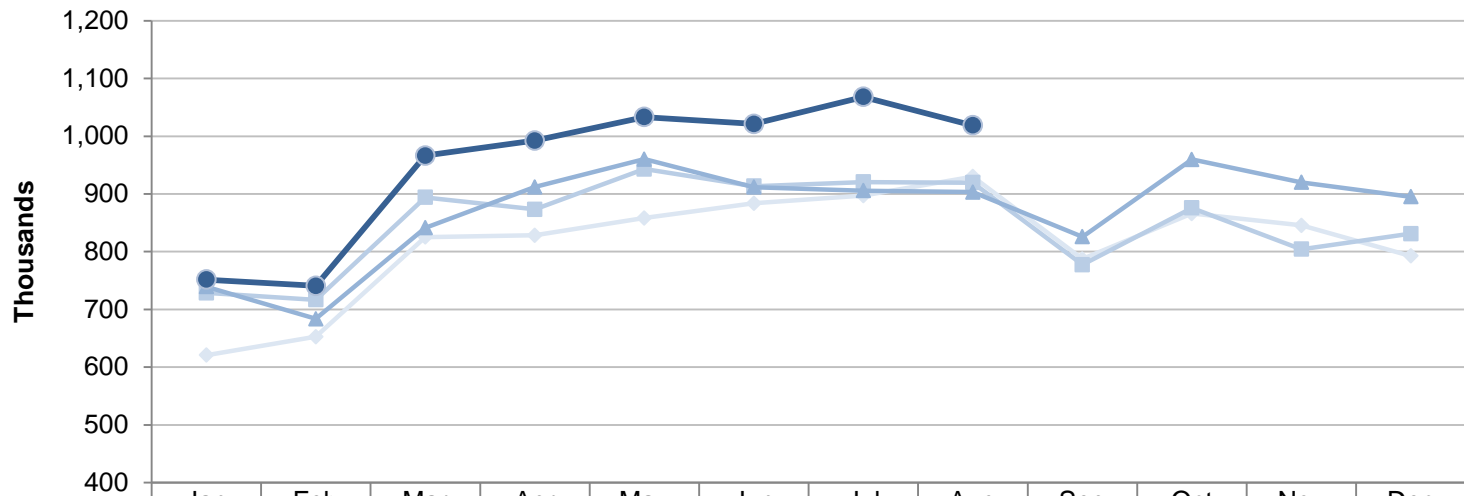
Dulles



BWI



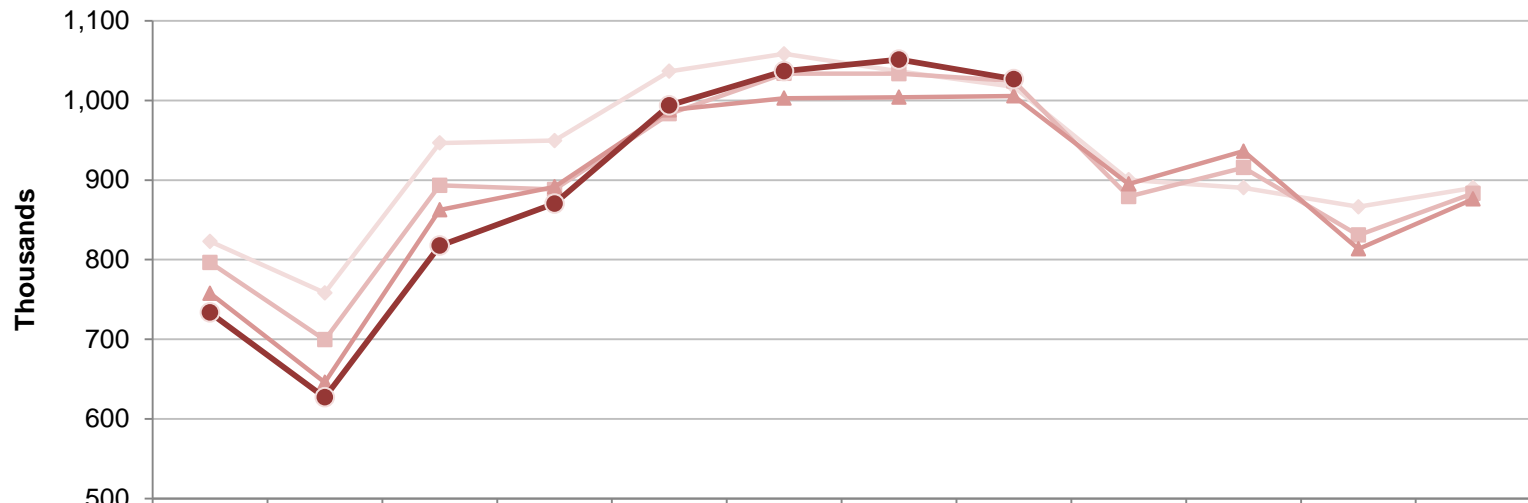
**Ronald Reagan Washington National Airport**  
 Total Commercial Passenger Enplanements  
 Calendar Years 2012 - 2015



	Jan	Feb	Mar	Apr	May	Jun	Jul	Aug	Sep	Oct	Nov	Dec
2012	621	653	825	829	858	884	897	930	787	866	846	793
2013	729	717	894	873	943	913	921	920	777	876	804	831
2014	739	684	841	912	960	912	906	903	826	960	920	895
2015	752	741	966	992	1033	1021	1068	1019				



**Dulles International Airport**  
**Total Commercial Passenger Enplanements**  
**Calendar Years 2012 - 2015**



	Jan	Feb	Mar	Apr	May	Jun	Jul	Aug	Sep	Oct	Nov	Dec
2012	823	758	947	950	1,037	1,059	1,036	1,017	900	890	866	890
2013	796	699	893	888	983	1,034	1,034	1,024	879	915	831	883
2014	758	646	863	892	988	1,003	1,004	1,006	895	936	813	876
2015	734	627	818	870	994	1,037	1,051	1,027				

**Commercial Passenger Market Share and Percent Change of Top Airlines  
in the Washington and Baltimore Region**

August 2015				August 2014			
<b>National</b>	<b>Top Airlines*</b>	<b>Percent Change</b>	<b>Passengers</b>	<b>Market Share</b>	<b>Top Airlines*</b>	<b>Passengers</b>	<b>Market Share</b>
	1. American + US Airways	5.6%	1,045,262	50.9%	1. American + US Airways	990,079	54.4%
	2. Delta	1.5%	282,467	13.8%	2. Delta	278,288	15.3%
	3. Southwest + Airtran	78.0%	269,693	13.1%	3. Southwest + Airtran	151,505	8.3%
	4. JetBlue	18.3%	170,160	8.3%	4. United	149,203	8.2%
	5. United	6.0%	158,134	7.7%	5. JetBlue	143,862	7.9%
	6. Alaska	0.0%	37,811	1.8%	6. Alaska	37,794	2.1%
	7. Frontier	11.1%	30,854	1.5%	7. Frontier	27,767	1.5%
	8. Air Canada	9.0%	25,928	1.3%	8. Air Canada	23,782	1.3%
	9. Virgin America	191.6%	21,801	1.1%	9. Sun Country	10,028	0.6%
	10. Sun Country	3.1%	10,339	0.5%	10. Virgin America	7,476	0.4%
Total Commercial Passengers	12.8%	2,052,449	100.0%	Total Commercial Passengers	1,819,784	100.0%	
<b>Dulles</b>	<b>Top Airlines*</b>	<b>Percent Change</b>	<b>Passengers</b>	<b>Market Share</b>	<b>Top Airlines*</b>	<b>Passengers</b>	<b>Market Share</b>
	1. United	-2.6%	1,266,827	60.4%	1. United	1,300,260	63.5%
	2. American + US Airways	5.0%	98,171	4.7%	2. American + US Airways	93,538	4.6%
	3. Delta	8.7%	84,412	4.0%	3. Delta	77,688	3.8%
	4. Frontier	449.8%	64,917	3.1%	4. Southwest	49,091	2.4%
	5. Lufthansa	10.2%	53,180	2.5%	5. Lufthansa	48,276	2.4%
	6. Southwest	6.2%	52,156	2.5%	6. Air France	41,538	2.0%
	7. Air France	6.3%	44,144	2.1%	7. JetBlue	38,498	1.9%
	8. British Airways	2.5%	38,853	1.9%	8. British Airways	37,902	1.9%
	9. Virgin America	2.1%	36,198	1.7%	9. Virgin America	35,452	1.7%
	10. JetBlue	-28.6%	27,477	1.3%	10. TACA + Avianca	31,610	1.5%
	11. All Other Airlines	13.4%	332,418	15.8%	11. All Other Airlines	293,090	14.3%
Total Commercial Passengers	2.5%	2,098,753	100.0%	Total Commercial Passengers	2,046,943	100.0%	
<b>Baltimore</b>	<b>Top Airlines*</b>	<b>Percent Change</b>	<b>Passengers</b>	<b>Market Share</b>	<b>Top Airlines*</b>	<b>Passengers</b>	<b>Market Share</b>
	1. Southwest + Airtran	2.1%	1,501,053	68.4%	1. Southwest + Airtran	1,470,348	70.3%
	2. American + US Airways	6.2%	208,375	9.5%	2. American + US Airways	196,298	9.4%
	3. Delta	-2.0%	183,865	8.4%	3. Delta	187,584	9.0%
	4. United + Continental	10.9%	111,663	5.1%	4. United + Continental	100,720	4.8%
	5. Spirit	40.8%	94,280	4.3%	5. Spirit	66,944	3.2%
	6. JetBlue	-5.3%	28,136	1.3%	6. JetBlue	29,705	1.4%
	7. British Airways	4.9%	10,786	0.5%	7. British Airways	10,285	0.5%
	8. Alaska		10,094		8. Alaska	N/A	N/A
	9. All Other Airlines	61.9%	46,147	2.1%	9. All Other Airlines	28,503	1.4%
Total Commercial Passengers	5.0%	2,194,399	100.0%	Total Commercial Passengers	2,090,387	100.0%	

\* Includes affiliated regional carriers

**Commercial Passenger Market Share Summary**

	Aug 2015	Aug 2014	Change
<b>Total Passengers</b>			
National	32.3%	30.5%	1.8%
Dulles	33.1%	34.4%	-1.3%
Baltimore	34.6%	35.1%	-0.5%
<b>Domestic Passengers</b>			
National	36.8%	35.0%	1.8%
Dulles	25.0%	25.4%	-0.3%
Baltimore	38.2%	39.6%	-1.4%
<b>International Passengers</b>			
National	4.6%	4.8%	-0.2%
Dulles	83.4%	86.2%	-2.8%
Baltimore	12.0%	9.0%	2.9%

Totals may not sum due to rounding.

**Metropolitan Washington Airports Authority**  
**Ronald Reagan Washington National Airport**  
**Monthly Air Traffic Summary Report**  
**August 2015**

<b>Description</b>	<b>Enplaned</b>	<b>Deplaned</b>	<b>Total</b>	<b>Year Ago</b>	<b>% Change</b>
<b>Aircraft Operations</b>					
Commercial:					
Air Carrier:					
Domestic			12,712	10,927	16.3
International			118	122	- 3.3
Transborder			0	0	0.0
<b>Total - Air Carrier</b>			<b>12,830</b>	<b>11,049</b>	<b>16.1</b>
Regional:					
Domestic			11,404	11,706	- 2.6
International			0	0	0.0
Transborder			542	637	- 14.9
<b>Total - Regional</b>			<b>11,946</b>	<b>12,343</b>	<b>- 3.2</b>
Commercial:					
Domestic			24,116	22,633	6.6
Transborder			660	759	- 13.0
<b>Total - Commercial</b>			<b>24,776</b>	<b>23,392</b>	<b>5.9</b>
Non-Commercial:					
General Aviation			151	157	- 3.8
Military			326	261	24.9
<b>Total - Non-Commercial</b>			<b>477</b>	<b>418</b>	<b>14.1</b>
<b>Grand Total - Aircraft Operations</b>			<b>25,253</b>	<b>23,810</b>	<b>6.1</b>
<b>Passengers</b>					
Commercial:					
Air Carrier Domestic:					
Scheduled	725,566	736,019	1,461,585	1,221,497	19.7
Chartered	0	0	0	0	0.0
<b>Total - Domestic Air Carrier</b>	<b>725,566</b>	<b>736,019</b>	<b>1,461,585</b>	<b>1,221,497</b>	<b>19.7</b>
Air Carrier International:					
Scheduled	5,344	6,082	11,426	11,644	- 1.9
Chartered	0	0	0	0	0.0
<b>Total - International Air Carrier</b>	<b>5,344</b>	<b>6,082</b>	<b>11,426</b>	<b>11,644</b>	<b>- 1.9</b>
Air Carrier Transborder:					
Scheduled	0	0	0	0	0.0
Chartered	0	0	0	0	0.0
<b>Total - Transborder Air Carrier</b>	<b>0</b>	<b>0</b>	<b>0</b>	<b>0</b>	<b>0.0</b>
<b>Total - Air Carrier</b>	<b>730,910</b>	<b>742,101</b>	<b>1,473,011</b>	<b>1,233,141</b>	<b>19.5</b>
Regional:					
Domestic	273,877	276,728	550,605	556,040	- 1.0
International	0	0	0	0	0.0
Transborder	14,053	14,780	28,833	30,603	- 5.8
<b>Total - Regional</b>	<b>287,930</b>	<b>291,508</b>	<b>579,438</b>	<b>586,643</b>	<b>- 1.2</b>
Commercial:					
Domestic	999,443	1,012,747	2,012,190	1,777,537	13.2
Transborder	19,397	20,862	40,259	42,247	- 4.7
<b>Total - Commercial</b>	<b>1,018,840</b>	<b>1,033,609</b>	<b>2,052,449</b>	<b>1,819,784</b>	<b>12.8</b>
Non-Commercial:					
General Aviation	228	220	448	550	- 18.5
Military	192	180	372	330	12.7
<b>Total - Non-Commercial</b>	<b>420</b>	<b>400</b>	<b>820</b>	<b>880</b>	<b>- 6.8</b>
<b>Grand Total - Passengers</b>	<b>1,019,260</b>	<b>1,034,009</b>	<b>2,053,269</b>	<b>1,820,664</b>	<b>12.8</b>

**Metropolitan Washington Airports Authority  
Ronald Reagan Washington National Airport  
Monthly Air Traffic Summary Report  
August 2015**

<b>Description</b>	<b>Enplaned</b>	<b>Deplaned</b>	<b>Total</b>	<b>Year Ago</b>	<b>% Change</b>
<b>Cargo - Tonnes</b>					
Mail:					
Domestic	16	1	16	48	- 65.8
International	0	0	0	0	0.0
Transborder	0	0	0	0	0.0
<b>Total - Mail:</b>	<b>16</b>	<b>1</b>	<b>16</b>	<b>48</b>	<b>- 65.8</b>
Freight + Express:					
Domestic	126	76	202	98	105.1
International	0	0	0	0	0.0
Transborder	0	0	0	0	- 95.6
<b>Total - Freight + Express:</b>	<b>126</b>	<b>76</b>	<b>202</b>	<b>99</b>	<b>104.6</b>
Mail Plus Freight + Express:					
Domestic	142	76	218	146	49.2
Transborder	0	0	0	0	- 95.6
<b>Grand Total - Cargo</b>	<b>142</b>	<b>76</b>	<b>218</b>	<b>147</b>	<b>48.9</b>

**NOTE:** Figures may not sum to total due to rounding.

**Metropolitan Washington Airports Authority**  
**Ronald Reagan Washington National Airport**  
**Monthly Air Traffic Summary Report**  
**January 2015 - August 2015**

Description	Enplaned	Deplaned	Total	Year Ago	% Change
<b>Aircraft Operations</b>					
Commercial:					
Air Carrier:					
Domestic			98,831	79,946	23.6
International			712	452	57.5
Transborder			0	0	0.0
<b>Total - Air Carrier</b>			<b>99,543</b>	<b>80,398</b>	<b>23.8</b>
Regional:					
Domestic			86,870	97,154	- 10.6
International			110	162	- 32.1
Transborder			4,635	5,474	- 15.3
<b>Total - Regional</b>			<b>91,615</b>	<b>102,790</b>	<b>- 10.9</b>
Commercial:					
Domestic			185,701	177,100	4.9
Transborder			5,457	6,088	- 10.4
<b>Total - Commercial</b>			<b>191,158</b>	<b>183,188</b>	<b>4.4</b>
Non-Commercial:					
General Aviation			1,997	2,623	- 23.9
Military			2,306	1,760	31.0
<b>Total - Non-Commercial</b>			<b>4,303</b>	<b>4,383</b>	<b>- 1.8</b>
<b>Grand Total - Aircraft Operations</b>			<b>195,461</b>	<b>187,571</b>	<b>4.2</b>
<b>Passengers</b>					
Commercial:					
Air Carrier Domestic:					
Scheduled	5,393,887	5,447,267	10,841,154	8,998,295	20.5
Chartered	145	145	290	0	100.0
<b>Total - Domestic Air Carrier</b>	<b>5,394,032</b>	<b>5,447,412</b>	<b>10,841,444</b>	<b>8,998,295</b>	<b>20.5</b>
Air Carrier International:					
Scheduled	28,248	30,186	58,434	41,677	40.2
Chartered	0	0	0	0	0.0
<b>Total - International Air Carrier</b>	<b>28,248</b>	<b>30,186</b>	<b>58,434</b>	<b>41,677</b>	<b>40.2</b>
Air Carrier Transborder:					
Scheduled	0	0	0	0	0.0
Chartered	0	0	0	0	0.0
<b>Total - Transborder Air Carrier</b>	<b>0</b>	<b>0</b>	<b>0</b>	<b>0</b>	<b>0.0</b>
<b>Total - Air Carrier</b>	<b>5,422,280</b>	<b>5,477,598</b>	<b>10,899,878</b>	<b>9,039,972</b>	<b>20.6</b>
Regional:					
Domestic	2,060,016	2,075,830	4,135,846	4,483,959	- 7.8
International	2,982	3,121	6,103	9,643	- 36.7
Transborder	107,218	105,247	212,465	225,543	- 5.8
<b>Total - Regional</b>	<b>2,170,216</b>	<b>2,184,198</b>	<b>4,354,414</b>	<b>4,719,145</b>	<b>- 7.7</b>
Commercial:					
Domestic	7,454,048	7,523,242	14,977,290	13,482,254	11.1
Transborder	138,448	138,554	277,002	276,863	0.1
<b>Total - Commercial</b>	<b>7,592,496</b>	<b>7,661,796</b>	<b>15,254,292</b>	<b>13,759,117</b>	<b>10.9</b>
Non-Commercial:					
General Aviation	6,004	5,859	11,863	11,198	5.9
Military	2,320	2,176	4,496	4,858	- 7.5
<b>Total - Non-Commercial</b>	<b>8,324</b>	<b>8,035</b>	<b>16,359</b>	<b>16,056</b>	<b>1.9</b>
<b>Grand Total - Passengers</b>	<b>7,600,820</b>	<b>7,669,831</b>	<b>15,270,651</b>	<b>13,775,173</b>	<b>10.9</b>

**Metropolitan Washington Airports Authority  
Ronald Reagan Washington National Airport  
Monthly Air Traffic Summary Report  
January 2015 - August 2015**

<b>Description</b>	<b>Enplaned</b>	<b>Deplaned</b>	<b>Total</b>	<b>Year Ago</b>	<b>% Change</b>
<b>Cargo - Tonnes</b>					
Mail:					
Domestic	167	1	169	263	- 35.9
International	0	3	3	0	100.0
Transborder	0	0	0	0	0.0
<b>Total - Mail:</b>	<b>167</b>	<b>4</b>	<b>172</b>	<b>263</b>	<b>- 34.7</b>
Freight + Express:					
Domestic	1,140	632	1,772	1,113	59.2
International	3	0	3	0	100.0
Transborder	0	0	0	1	- 47.1
<b>Total - Freight + Express:</b>	<b>1,143</b>	<b>632</b>	<b>1,775</b>	<b>1,114</b>	<b>59.4</b>
Mail Plus Freight + Express:					
Domestic	1,307	633	1,940	1,376	41.0
Transborder	3	3	7	1	702.9
<b>Grand Total - Cargo</b>	<b>1,311</b>	<b>636</b>	<b>1,947</b>	<b>1,377</b>	<b>41.4</b>

**NOTE:** Figures may not sum to total due to rounding.

**Metropolitan Washington Airports Authority**  
**Ronald Reagan Washington National Airport**  
**Monthly Air Traffic Summary Report**  
**September 2014 - August 2015**

<b>Description</b>	<b>Enplaned</b>	<b>Deplaned</b>	<b>Total</b>	<b>Year Ago</b>	<b>% Change</b>
<b>Aircraft Operations</b>					
Commercial:					
Air Carrier:					
Domestic			145,441	119,387	21.8
International			954	478	99.6
Transborder			0	0	0.0
<b>Total - Air Carrier</b>			<b>146,395</b>	<b>119,865</b>	<b>22.1</b>
Regional:					
Domestic			130,948	147,889	- 11.5
International			110	245	- 55.1
Transborder			7,110	8,350	- 14.9
<b>Total - Regional</b>			<b>138,168</b>	<b>156,484</b>	<b>- 11.7</b>
Commercial:					
Domestic			276,389	267,276	3.4
Transborder			8,174	9,073	- 9.9
<b>Total - Commercial</b>			<b>284,563</b>	<b>276,349</b>	<b>3.0</b>
Non-Commercial:					
General Aviation			3,114	4,232	- 26.4
Military			3,393	2,568	32.1
<b>Total - Non-Commercial</b>			<b>6,507</b>	<b>6,800</b>	<b>- 4.3</b>
<b>Grand Total - Aircraft Operations</b>			<b>291,070</b>	<b>283,149</b>	<b>2.8</b>
<b>Passengers</b>					
Commercial:					
Air Carrier Domestic:					
Scheduled	7,914,154	7,787,885	15,702,039	13,246,295	18.5
Chartered	145	145	290	0	100.0
<b>Total - Domestic Air Carrier</b>	<b>7,914,299</b>	<b>7,788,030</b>	<b>15,702,329</b>	<b>13,246,295</b>	<b>18.5</b>
Air Carrier International:					
Scheduled	36,051	37,540	73,591	44,388	65.8
Chartered	0	0	0	0	0.0
<b>Total - International Air Carrier</b>	<b>36,051</b>	<b>37,540</b>	<b>73,591</b>	<b>44,388</b>	<b>65.8</b>
Air Carrier Transborder:					
Scheduled	0	0	0	0	0.0
Chartered	0	0	0	0	0.0
<b>Total - Transborder Air Carrier</b>	<b>0</b>	<b>0</b>	<b>0</b>	<b>0</b>	<b>0.0</b>
<b>Total - Air Carrier</b>	<b>7,950,350</b>	<b>7,825,570</b>	<b>15,775,920</b>	<b>13,290,683</b>	<b>18.7</b>
Regional:					
Domestic	3,081,838	3,100,327	6,182,165	6,666,131	- 7.3
International	2,982	3,121	6,103	13,923	- 56.2
Transborder	158,059	157,312	315,371	336,513	- 6.3
<b>Total - Regional</b>	<b>3,242,879</b>	<b>3,260,760</b>	<b>6,503,639</b>	<b>7,016,567</b>	<b>- 7.3</b>
Commercial:					
Domestic	10,996,137	10,888,357	21,884,494	19,912,426	9.9
Transborder	197,092	197,973	395,065	394,824	0.1
<b>Total - Commercial</b>	<b>11,193,229</b>	<b>11,086,330</b>	<b>22,279,559</b>	<b>20,307,250</b>	<b>9.7</b>
Non-Commercial:					
General Aviation	9,894	9,662	19,556	16,716	17.0
Military	3,431	3,319	6,750	7,119	- 5.2
<b>Total - Non-Commercial</b>	<b>13,325</b>	<b>12,981</b>	<b>26,306</b>	<b>23,835</b>	<b>10.4</b>
<b>Grand Total - Passengers</b>	<b>11,206,554</b>	<b>11,099,311</b>	<b>22,305,865</b>	<b>20,331,085</b>	<b>9.7</b>

**Metropolitan Washington Airports Authority**  
**Ronald Reagan Washington National Airport**  
**Monthly Air Traffic Summary Report**  
**September 2014 - August 2015**

<b>Description</b>	<b>Enplaned</b>	<b>Deplaned</b>	<b>Total</b>	<b>Year Ago</b>	<b>% Change</b>
<b>Cargo - Tonnes</b>					
Mail:					
Domestic	241	3	244	305	- 20.0
International	0	3	3	0	100.0
Transborder	0	0	0	0	0.0
<b>Total - Mail:</b>	<b>241</b>	<b>6</b>	<b>247</b>	<b>305</b>	<b>- 19.0</b>
Freight + Express:					
Domestic	1,578	863	2,441	1,595	53.0
International	3	0	3	0	100.0
Transborder	1	0	1	1	- 63.5
<b>Total - Freight + Express:</b>	<b>1,581</b>	<b>863</b>	<b>2,444</b>	<b>1,597</b>	<b>53.1</b>
Mail Plus Freight + Express:					
Domestic	1,819	865	2,685	1,900	41.3
Transborder	4	3	7	1	383.2
<b>Grand Total - Cargo</b>	<b>1,823</b>	<b>869</b>	<b>2,691</b>	<b>1,902</b>	<b>41.5</b>

**NOTE:** Figures may not sum to total due to rounding.



**Metropolitan Washington Airports Authority**  
**Washington Dulles International Airport**  
**Monthly Air Traffic Summary Report**  
**August 2015**

<b>Description</b>	<b>Enplaned</b>	<b>Deplaned</b>	<b>Total</b>	<b>Year Ago</b>	<b>% Change</b>
<b>Aircraft Operations</b>					
Commercial:					
Air Carrier:					
Domestic			7,058	6,058	16.5
International			3,371	3,376	- 0.1
Transborder			0	0	0.0
<b>Total - Air Carrier</b>			<b>10,429</b>	<b>9,434</b>	<b>10.5</b>
Regional:					
Domestic			10,082	11,729	- 14.0
International			130	14	828.6
Transborder			224	964	- 76.8
<b>Total - Regional</b>			<b>10,436</b>	<b>12,707</b>	<b>- 17.9</b>
Commercial:					
Domestic			17,140	17,787	- 3.6
International			3,725	4,354	- 14.4
<b>Total - Commercial</b>			<b>20,865</b>	<b>22,141</b>	<b>- 5.8</b>
Non-Commercial:					
General Aviation			2,249	2,607	- 13.7
Military			44	40	10.0
<b>Total - Non-Commercial</b>			<b>2,293</b>	<b>2,647</b>	<b>- 13.4</b>
<b>Grand Total - Aircraft Operations</b>			<b>23,158</b>	<b>24,788</b>	<b>- 6.6</b>
<b>Passengers</b>					
Commercial:					
Air Carrier Domestic:					
Scheduled	426,841	436,028	862,869	797,844	8.2
Chartered	162	162	324	197	64.5
<b>Total - Domestic Air Carrier</b>	<b>427,003</b>	<b>436,190</b>	<b>863,193</b>	<b>798,041</b>	<b>8.2</b>
Air Carrier International:					
Scheduled	334,749	376,600	711,349	708,748	0.4
Chartered	393	426	819	925	- 11.5
<b>Total - International Air Carrier</b>	<b>335,142</b>	<b>377,026</b>	<b>712,168</b>	<b>709,673</b>	<b>0.4</b>
Air Carrier Transborder:					
Scheduled	0	0	0	0	0.0
Chartered	0	0	0	0	0.0
<b>Total - Transborder Air Carrier</b>	<b>0</b>	<b>0</b>	<b>0</b>	<b>0</b>	<b>0.0</b>
<b>Total - Air Carrier</b>	<b>762,145</b>	<b>813,216</b>	<b>1,575,361</b>	<b>1,507,714</b>	<b>4.5</b>
Regional:					
Domestic	256,233	250,785	507,018	490,175	3.4
International	2,952	2,787	5,739	2,317	147.7
Transborder	5,412	5,223	10,635	46,737	- 77.2
<b>Total - Regional</b>	<b>264,597</b>	<b>258,795</b>	<b>523,392</b>	<b>539,229</b>	<b>- 2.9</b>
Commercial:					
Domestic	683,236	686,975	1,370,211	1,288,216	6.4
International	343,506	385,036	728,542	758,727	- 4.0
<b>Total - Commercial</b>	<b>1,026,742</b>	<b>1,072,011</b>	<b>2,098,753</b>	<b>2,046,943</b>	<b>2.5</b>
Non-Commercial:					
General Aviation	4,143	4,520	8,663	10,163	- 14.8
Military	0	3	3	12	- 75.0
<b>Total - Non-Commercial</b>	<b>4,143</b>	<b>4,523</b>	<b>8,666</b>	<b>10,175</b>	<b>- 14.8</b>
<b>Grand Total - Passengers</b>	<b>1,030,885</b>	<b>1,076,534</b>	<b>2,107,419</b>	<b>2,057,118</b>	<b>2.4</b>

**Metropolitan Washington Airports Authority**  
**Washington Dulles International Airport**  
**Monthly Air Traffic Summary Report**  
**August 2015**

<b>Description</b>	<b>Enplaned</b>	<b>Deplaned</b>	<b>Total</b>	<b>Year Ago</b>	<b>% Change</b>
<b>Cargo - Tonnes</b>					
Mail:					
Domestic	526	430	955	497	92.2
International	201	156	357	459	- 22.2
<b>Total - Mail:</b>	<b>727</b>	<b>585</b>	<b>1,312</b>	<b>956</b>	<b>37.3</b>
Freight + Express:					
Domestic	3,721	3,311	7,032	7,201	- 2.3
International	4,744	7,869	12,614	13,661	- 7.7
<b>Total - Freight + Express:</b>	<b>8,465</b>	<b>11,181</b>	<b>19,646</b>	<b>20,862</b>	<b>- 5.8</b>
Mail Plus Freight + Express:					
Domestic	4,246	3,741	7,987	7,698	3.8
International	4,946	8,025	12,971	14,120	- 8.1
<b>Grand Total - Cargo</b>	<b>9,192</b>	<b>11,766</b>	<b>20,958</b>	<b>21,818</b>	<b>- 3.9</b>

**NOTE:** Figures may not sum to total due to rounding.

**Metropolitan Washington Airports Authority**  
**Washington Dulles International Airport**  
**Monthly Air Traffic Summary Report**  
**January 2015 - August 2015**

<b>Description</b>	<b>Enplaned</b>	<b>Deplaned</b>	<b>Total</b>	<b>Year Ago</b>	<b>% Change</b>
<b>Aircraft Operations</b>					
Commercial:					
Air Carrier:					
Domestic			52,492	45,492	15.4
International			24,115	24,524	- 1.7
Transborder			2	0	100.0
<b>Total - Air Carrier</b>			<b>76,609</b>	<b>70,016</b>	<b>9.4</b>
Regional:					
Domestic			74,771	90,319	- 17.2
International			1,805	344	424.7
Transborder			1,509	6,302	- 76.1
<b>Total - Regional</b>			<b>78,085</b>	<b>96,965</b>	<b>- 19.5</b>
Commercial:					
Domestic			127,263	135,811	- 6.3
International			27,431	31,170	- 12.0
<b>Total - Commercial</b>			<b>154,694</b>	<b>166,981</b>	<b>- 7.4</b>
Non-Commercial:					
General Aviation			24,152	25,700	- 6.0
Military			305	393	- 22.4
<b>Total - Non-Commercial</b>			<b>24,457</b>	<b>26,093</b>	<b>- 6.3</b>
<b>Grand Total - Aircraft Operations</b>			<b>179,151</b>	<b>193,074</b>	<b>- 7.2</b>
<b>Passengers</b>					
Commercial:					
Air Carrier Domestic:					
Scheduled	3,033,679	3,077,302	6,110,981	5,748,899	6.3
Chartered	3,374	2,474	5,848	8,008	- 27.0
<b>Total - Domestic Air Carrier</b>	<b>3,037,053</b>	<b>3,079,776</b>	<b>6,116,829</b>	<b>5,756,907</b>	<b>6.3</b>
Air Carrier International:					
Scheduled	2,262,390	2,336,868	4,599,258	4,601,426	0.0
Chartered	4,770	4,600	9,370	6,740	39.0
<b>Total - International Air Carrier</b>	<b>2,267,160</b>	<b>2,341,468</b>	<b>4,608,628</b>	<b>4,608,166</b>	<b>0.0</b>
Air Carrier Transborder:					
Scheduled	0	0	0	0	0.0
Chartered	0	64	64	0	100.0
<b>Total - Transborder Air Carrier</b>	<b>0</b>	<b>64</b>	<b>64</b>	<b>0</b>	<b>100.0</b>
<b>Total - Air Carrier</b>	<b>5,304,213</b>	<b>5,421,308</b>	<b>10,725,521</b>	<b>10,365,073</b>	<b>3.5</b>
Regional:					
Domestic	1,782,752	1,769,596	3,552,348	3,733,987	- 4.9
International	36,603	40,712	77,315	21,273	263.4
Transborder	33,450	32,254	65,704	280,989	- 76.6
<b>Total - Regional</b>	<b>1,852,805</b>	<b>1,842,562</b>	<b>3,695,367</b>	<b>4,036,249</b>	<b>- 8.4</b>
Commercial:					
Domestic	4,819,805	4,849,372	9,669,177	9,490,894	1.9
International	2,337,213	2,414,498	4,751,711	4,910,428	- 3.2
<b>Total - Commercial</b>	<b>7,157,018</b>	<b>7,263,870</b>	<b>14,420,888</b>	<b>14,401,322</b>	<b>0.1</b>
Non-Commercial:					
General Aviation	48,397	48,311	96,708	97,734	- 1.0
Military	398	374	772	328	135.4
<b>Total - Non-Commercial</b>	<b>48,795</b>	<b>48,685</b>	<b>97,480</b>	<b>98,062</b>	<b>- 0.6</b>
<b>Grand Total - Passengers</b>	<b>7,205,813</b>	<b>7,312,555</b>	<b>14,518,368</b>	<b>14,499,384</b>	<b>0.1</b>

**Metropolitan Washington Airports Authority**  
**Washington Dulles International Airport**  
**Monthly Air Traffic Summary Report**  
**January 2015 - August 2015**

<b>Description</b>	<b>Enplaned</b>	<b>Deplaned</b>	<b>Total</b>	<b>Year Ago</b>	<b>% Change</b>
<b>Cargo - Tonnes</b>					
Mail:					
Domestic	3,178	3,006	6,184	4,524	36.7
International	1,077	1,275	2,352	2,138	10.0
<b>Total - Mail:</b>	<b>4,255</b>	<b>4,281</b>	<b>8,536</b>	<b>6,662</b>	<b>28.1</b>
Freight + Express:					
Domestic	29,389	24,742	54,131	53,698	0.8
International	41,034	70,205	111,238	115,861	- 4.0
<b>Total - Freight + Express:</b>	<b>70,423</b>	<b>94,947</b>	<b>165,369</b>	<b>169,560</b>	<b>- 2.5</b>
Mail Plus Freight + Express:					
Domestic	32,567	27,748	60,315	58,222	3.6
International	42,111	71,480	113,590	117,999	- 3.7
<b>Grand Total - Cargo</b>	<b>74,678</b>	<b>99,228</b>	<b>173,906</b>	<b>176,222</b>	<b>- 1.3</b>

**NOTE:** Figures may not sum to total due to rounding.

**Metropolitan Washington Airports Authority**  
**Washington Dulles International Airport**  
**Monthly Air Traffic Summary Report**  
**September 2014 - August 2015**

<b>Description</b>	<b>Enplaned</b>	<b>Deplaned</b>	<b>Total</b>	<b>Year Ago</b>	<b>% Change</b>
<b>Aircraft Operations</b>					
Commercial:					
Air Carrier:					
Domestic			78,550	69,945	12.3
International			35,518	36,110	- 1.6
Transborder			2	1	100.0
<b>Total - Air Carrier</b>			<b>114,070</b>	<b>106,056</b>	<b>7.6</b>
Regional:					
Domestic			118,499	138,217	- 14.3
International			1,821	447	307.4
Transborder			3,200	9,831	- 67.4
<b>Total - Regional</b>			<b>123,520</b>	<b>148,495</b>	<b>- 16.8</b>
Commercial:					
Domestic			197,049	208,162	- 5.3
International			40,541	46,389	- 12.6
<b>Total - Commercial</b>			<b>237,590</b>	<b>254,551</b>	<b>- 6.7</b>
Non-Commercial:					
General Aviation			37,417	40,046	- 6.6
Military			452	703	- 35.7
<b>Total - Non-Commercial</b>			<b>37,869</b>	<b>40,749</b>	<b>- 7.1</b>
<b>Grand Total - Aircraft Operations</b>			<b>275,459</b>	<b>295,300</b>	<b>- 6.7</b>
<b>Passengers</b>					
Commercial:					
Air Carrier Domestic:					
Scheduled	4,492,750	4,549,314	9,042,064	8,602,206	5.1
Chartered	6,109	5,097	11,206	14,047	- 20.2
<b>Total - Domestic Air Carrier</b>	<b>4,498,859</b>	<b>4,554,411</b>	<b>9,053,270</b>	<b>8,616,253</b>	<b>5.1</b>
Air Carrier International:					
Scheduled	3,326,773	3,369,999	6,696,772	6,672,033	0.4
Chartered	6,669	6,604	13,273	10,608	25.1
<b>Total - International Air Carrier</b>	<b>3,333,442</b>	<b>3,376,603</b>	<b>6,710,045</b>	<b>6,682,641</b>	<b>0.4</b>
Air Carrier Transborder:					
Scheduled	0	0	0	0	0.0
Chartered	0	64	64	189	- 66.1
<b>Total - Transborder Air Carrier</b>	<b>0</b>	<b>64</b>	<b>64</b>	<b>189</b>	<b>- 66.1</b>
<b>Total - Air Carrier</b>	<b>7,832,301</b>	<b>7,931,078</b>	<b>15,763,379</b>	<b>15,299,083</b>	<b>3.0</b>
Regional:					
Domestic	2,736,254	2,714,177	5,450,431	5,658,401	- 3.7
International	37,923	41,686	79,609	26,049	205.6
Transborder	71,629	74,903	146,532	426,539	- 65.6
<b>Total - Regional</b>	<b>2,845,806</b>	<b>2,830,766</b>	<b>5,676,572</b>	<b>6,110,989</b>	<b>- 7.1</b>
Commercial:					
Domestic	7,235,113	7,268,588	14,503,701	14,274,654	1.6
International	3,442,994	3,493,256	6,936,250	7,135,418	- 2.8
<b>Total - Commercial</b>	<b>10,678,107</b>	<b>10,761,844</b>	<b>21,439,951</b>	<b>21,410,072</b>	<b>0.1</b>
Non-Commercial:					
General Aviation	75,883	74,348	150,231	150,082	0.1
Military	522	513	1,035	770	34.4
<b>Total - Non-Commercial</b>	<b>76,405</b>	<b>74,861</b>	<b>151,266</b>	<b>150,852</b>	<b>0.3</b>
<b>Grand Total - Passengers</b>	<b>10,754,512</b>	<b>10,836,705</b>	<b>21,591,217</b>	<b>21,560,924</b>	<b>0.1</b>

**Metropolitan Washington Airports Authority**  
**Washington Dulles International Airport**  
**Monthly Air Traffic Summary Report**  
**September 2014 - August 2015**

<b>Description</b>	<b>Enplaned</b>	<b>Deplaned</b>	<b>Total</b>	<b>Year Ago</b>	<b>% Change</b>
<b>Cargo - Tonnes</b>					
Mail:					
Domestic	4,224	4,599	8,823	7,085	24.5
International	2,360	2,088	4,448	8,035	- 44.6
<b>Total - Mail:</b>	<b>6,584</b>	<b>6,687</b>	<b>13,270</b>	<b>15,120</b>	<b>- 12.2</b>
Freight + Express:					
Domestic	44,622	37,782	82,403	80,656	2.2
International	60,654	109,110	169,764	167,925	1.1
<b>Total - Freight + Express:</b>	<b>105,276</b>	<b>146,891</b>	<b>252,167</b>	<b>248,580</b>	<b>1.4</b>
Mail Plus Freight + Express:					
Domestic	48,846	42,380	91,226	87,741	4.0
International	63,014	111,198	174,212	175,959	- 1.0
<b>Grand Total - Cargo</b>	<b>111,860</b>	<b>153,578</b>	<b>265,438</b>	<b>263,700</b>	<b>0.7</b>

**NOTE:** Figures may not sum to total due to rounding.