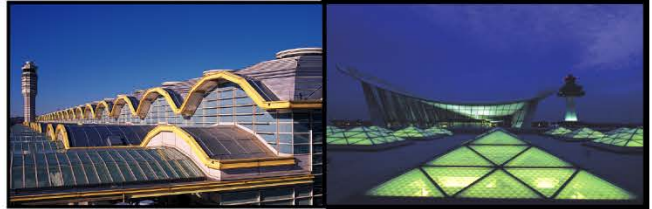


July
2015

Air Traffic Statistics



METROPOLITAN WASHINGTON AIRPORTS AUTHORITY

Metropolitan Washington Airports Authority

Air Traffic Statistics

Table of Contents

Summary

Air Traffic Summary	1
SH&E Air Traffic Schedule Activity.....	3
Passenger Trends.....	5
Total Passengers 4-Year Comparison - DCA, IAD, BWI.....	6
Total Commercial Passenger Enplanements.....	7
Market Share and Percentage of Top Airlines - DCA, IAD, BWI.....	9

Air Traffic Statistics - DCA

Monthly Air Traffic Summary – Current Month.....	10
Monthly Air Traffic Summary – Year-to-Date	12
Monthly Air Traffic Summary – Last 12 Months	14

Air Traffic Statistics - IAD

Monthly Air Traffic Summary – Current Month.....	16
Monthly Air Traffic Summary – Year-to-Date	18
Monthly Air Traffic Summary – Last 12 Months	20

Air Traffic Summary July 2015

		Passenger Activity (in Millions)								
		Current Month			Year-to-Date			Last 12 Months		
		DCA	IAD	System	DCA	IAD	System	DCA	IAD	System
Commercial	Dom									
	Passengers	2.1	1.4	3.5	13.0	8.3	21.3	21.6	14.4	36.1
	% Change	18.0%	8.5%	14.0%	10.8%	1.2%	6.8%	8.7%	0.5%	5.2%
	Int'l									
Passengers	< 0.1	0.7	0.8	0.2	4.0	4.3	0.4	7.0	7.4	
% Change	6.4%	(2.9%)	(2.4%)	0.9%	(3.1%)	(2.9%)	0.4%	(1.8%)	(1.7%)	
Total	Passengers	2.1	2.1	4.2	13.2	12.4	25.6	22.1	21.5	43.6
	% Change	17.8%	4.2%	10.6%	10.6%	(0.3%)	5.0%	8.5%	(0.2%)	4.0%

Note: System totals may not sum due to rounding.

U.S. industry average passenger enplanements as reported by Airlines for America (A4A):

Enplanements	Current Month	Year-to-Date
System	6.0%	4.3%
Domestic	5.9%	4.3%
International	6.2%	4.1%

Ronald Reagan Washington National Airport

- Domestic commercial passenger activity increased 18.0% in July 2015 compared to July 2014. Significant activity by carrier follows:

Airline	Comments
American + US Airways	<ul style="list-style-type: none"> 9.6% increase in passenger activity from July 2014 Increased service to Manchester in November 2014; Raleigh/Durham in January 2015; Boston in February 2015; Burlington in March 2015; Memphis in April 2015; Dayton and Louisville in May 2015; Albany, Bangor, Fort Myers, Greenville/Spartanburg, Huntsville/Decatur, Miami, Portland, Pensacola, and Providence in June 2015
Southwest + AirTran	<ul style="list-style-type: none"> 144.0% increase in passenger activity from slots divested by American New service to Chicago Midway, Nashville, and New Orleans in August 2014; Tampa and Dallas Love in October 2014; Akron and Indianapolis in November 2014; and Columbus in April 2015 Increased service to Houston and St. Louis in November 2014 Reduced service to Milwaukee in November 2014, and Atlanta in January 2015
Virgin America	<ul style="list-style-type: none"> 203.5% increase in passenger activity with new service to Dallas Love in October 2014
JetBlue	<ul style="list-style-type: none"> 23.8% increase in passenger activity from slots divested by American New service to Fort Myers, Jacksonville, and West Palm Beach in December 2014; and Nantucket in July 2015 Increased service to Ft. Lauderdale and Orlando in January 2015

- Transborder passenger traffic increased 6.4% in July 2015 due to an increase in load factors.
- The combined American + US Airways operations, including its regional affiliates, had the largest commercial passenger market share with 51.3%, a decrease compared to 55.2% in July 2014.

Washington Dulles International Airport

Domestic Passenger Activity

- Domestic commercial passenger activity increased 8.5% in July 2015 compared to July 2014. Significant activity by carrier follows:

Airline	Comments
United	<ul style="list-style-type: none"> 2.0% increase in passenger activity due to an increase in load factors that outpaced the decrease in capacity Discontinued service to 10 domestic destinations, including five now being served by Silver Airways Reduced service for 34 destinations based on demand throughout the system Increased service to Tampa in March 2015; Newark and Charlotte in April 2015; Detroit, Portland, San Juan, and Savannah in July 2015
American+US Airways	<ul style="list-style-type: none"> 4.1% increase due to higher load factors
Delta	<ul style="list-style-type: none"> 9.2% increase due to increase service to New York JFK and Atlanta in March 2015, and Minneapolis in June 2015
JetBlue	<ul style="list-style-type: none"> 24.1% decline due to discontinued service to Long Beach in September 2014, and reduced service to Boston in November 2014 Increased service to New York JFK in January 2015
Frontier	<ul style="list-style-type: none"> New service began in August 2014
Alaska	<ul style="list-style-type: none"> New service began in March 2015

International Passenger Activity

- July 2015 international commercial passenger traffic decreased 2.9%. Significant activity by carrier follows:

Airline	Comments
United	<ul style="list-style-type: none"> 14.5% decrease in passenger activity Reduced service to San Jose (Costa Rica) and Guatemala in November 2014; Toronto in December 2014; Aruba, Grand Cayman, Montego Bay, and Montreal in May 2015; Ottawa and Vancouver in June 2015 as well as discontinued service to Nassau in September 2014 Increased service to Paris in June 2015
Ethiopian	<ul style="list-style-type: none"> 13.1% decline as a result of lower load factors
TACA + Avianca	<ul style="list-style-type: none"> 7.4% decline due to reduced service to El Salvador in February 2015
Brussels	<ul style="list-style-type: none"> 28.2% decline as a result of lower load factors
Lufthansa	<ul style="list-style-type: none"> 20.2% increase due to increased capacity as a result of aircraft up-gauging in May 2015
Icelandair	<ul style="list-style-type: none"> 46.8% increase due to increased service in May 2015
Aer Lingus	<ul style="list-style-type: none"> New service began in May 2015

- United Airlines, including its regional affiliates, had the largest commercial passenger market share of 60.1%, a decrease compared to 64.1% in July 2014.

Cargo Activity

- For the month of July 2015, total cargo decreased 3.8% at Dulles from a year earlier. Domestic cargo increased 6.9% primarily due to an increase on United (35.8%).
- International cargo declined 9.3% led by British Airways (-33.6%), Emirates (-50.9%), All Nippon (-19.9%), and United (-5.5%). The carriers with the largest increases in international cargo were Austrian (20.7%) and Kalitta, which did not have cargo activity in July 2014, and new service by Aer Lingus.

Baltimore-Washington International Airport

- Current month commercial passenger activity increased 9.1% from July 2014, outpacing activity at Dulles by 249k commercial passengers (11.8%), and National by 245k commercial passengers (11.6%).
- Southwest's passenger market share totaled 70.0%, a decline from 70.8% in July 2014.
- Cargo activity at BWI totaled 10.5k metric tonnes, a 15.8% (1,431 tonnes) increase from a year earlier primarily as a result of increases on DHL (551 tonnes) and FedEx (359 tonnes).

Ronald Reagan Washington National Airport
Air Traffic Schedule Activity
July 2015 vs. July 2014

July 2015:	Daily Departures	Airlines*	Unduplicated Destinations
Domestic			
Passenger service information -			
Mainline	210	9	--
Regional Affiliate	<u>178</u>	<u>9</u>	--
Domestic Total	388	18	82
Transborder/International			
Passenger service information -			
Mainline	2	2	--
Regional Affiliate	<u>10</u>	<u>3</u>	--
Transborder/International Total	12	5	5

July 2014:	Daily Departures	Airlines*	Unduplicated Destinations
Domestic			
Passenger service information -			
Mainline	170	9	--
Regional Affiliate	<u>195</u>	<u>9</u>	--
Domestic Total	365	18	83
Transborder/International			
Passenger service information -			
Mainline	2	2	--
Regional Affiliate	<u>10</u>	<u>3</u>	--
Transborder/International Total	12	5	5

* The following airlines are counted as one airline:
 Southwest and AirTran
 American and US Airways
 Regional carriers flying for multiple mainline carriers

Source: DIIO, August 26, 2015

Washington Dulles International Airport

Air Traffic Schedule Activity

July 2015 vs. July 2014

July 2015:	Daily Departures	Airlines*	Unduplicated Destinations
Domestic			
Passenger service information -			
Mainline	112	9	--
Regional Affiliate	<u>137</u>	<u>9</u>	--
Domestic Total	249	18	79
Transborder/International			
Passenger service information -			
Mainline	58	26	--
Regional Affiliate	<u>10</u>	<u>2</u>	--
Transborder/International Total	68	28	46

July 2014:	Daily Departures	Airlines*	Unduplicated Destinations
Domestic			
Passenger service information -			
Mainline	101	7	--
Regional Affiliate	<u>184</u>	<u>12</u>	--
Domestic Total	285	19	80
Transborder/International			
Passenger service information -			
Mainline	59	26	--
Regional Affiliate	<u>13</u>	<u>5</u>	--
Transborder/International Total	72	31	48

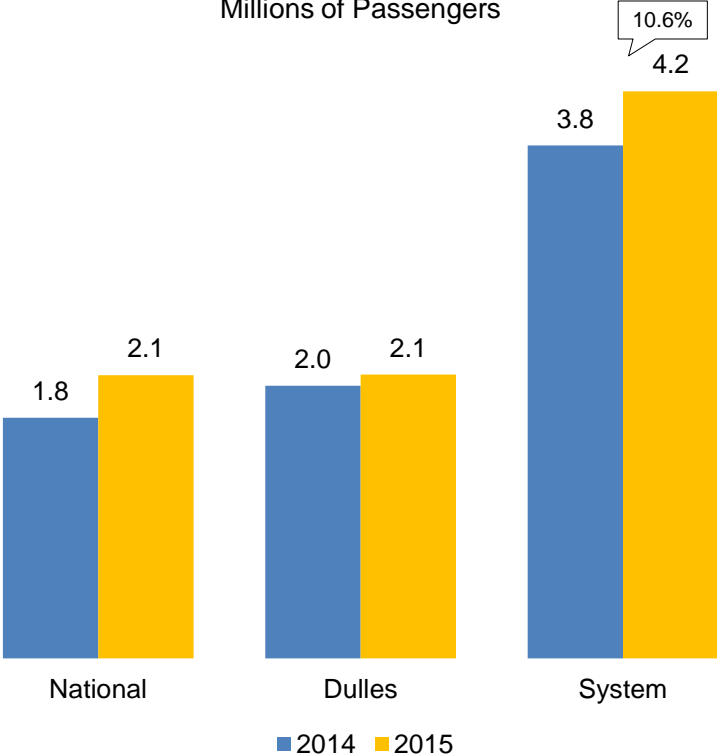
* The following airlines are counted as one airline:
 Pacific Wings and Sun Air International
 Avianca and TACA
 American Airlines and US Airways
 Austrian and Tyrolean
 Regional carriers flying for multiple mainline carriers

Source: DIIO, August 26, 2015

Passenger Trends

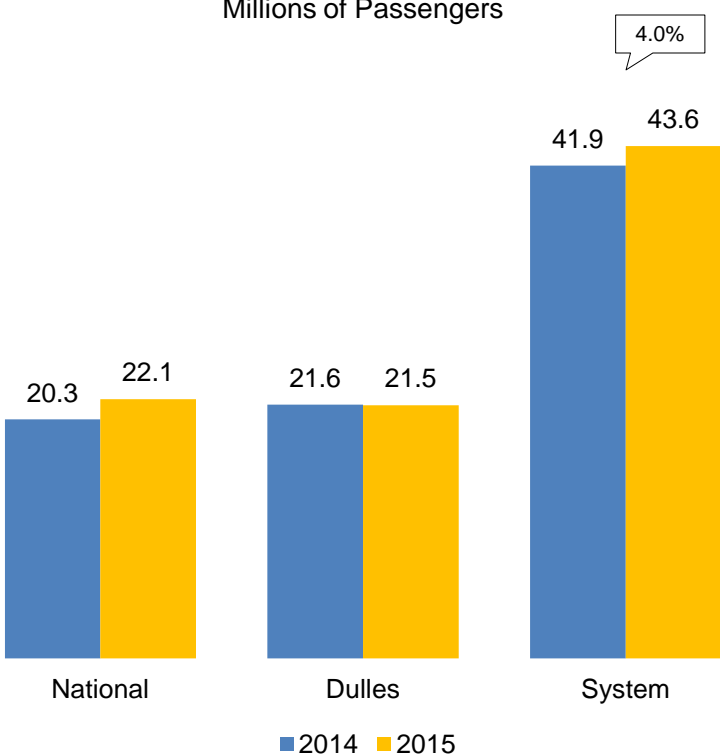
July 2015 Comparison

Millions of Passengers



Last 12-Months Comparison

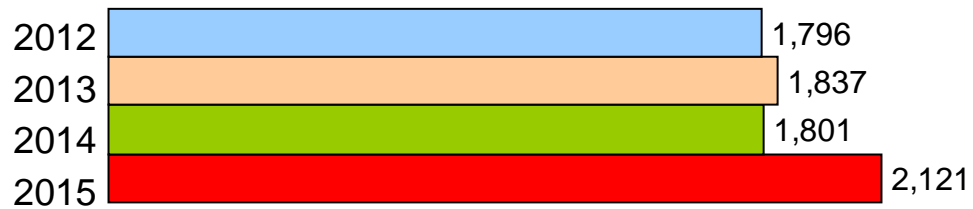
Millions of Passengers



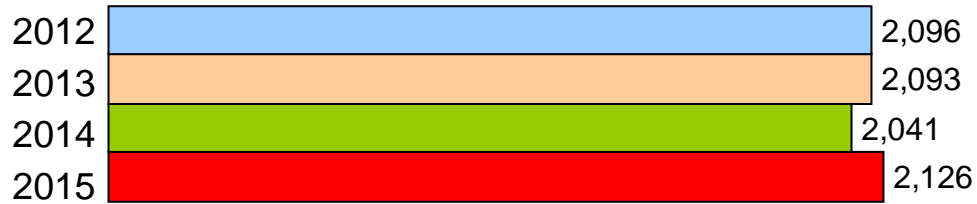
* System totals may not sum due to rounding.

Total Passengers Four Year Comparison of the Month of July (Thousands)

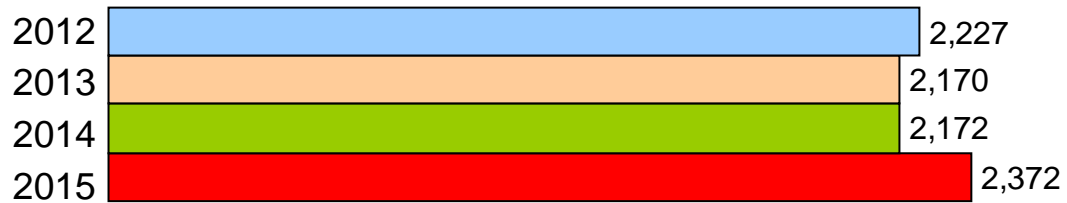
National



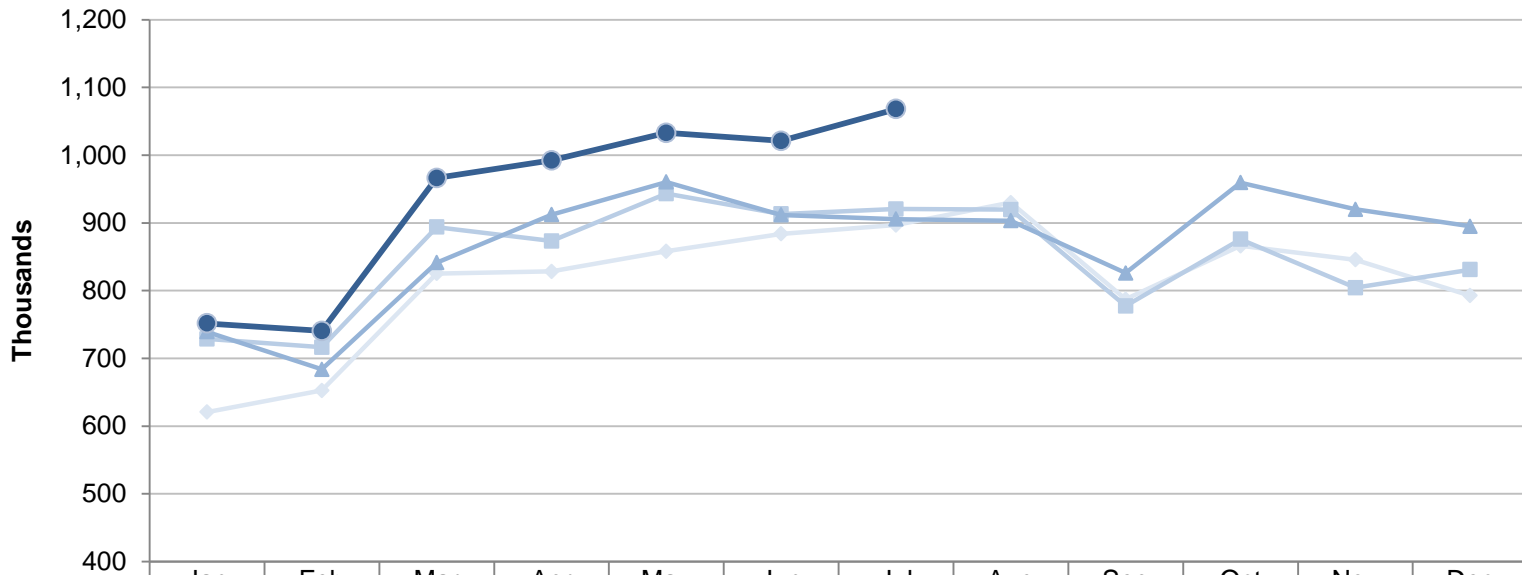
Dulles



BWI

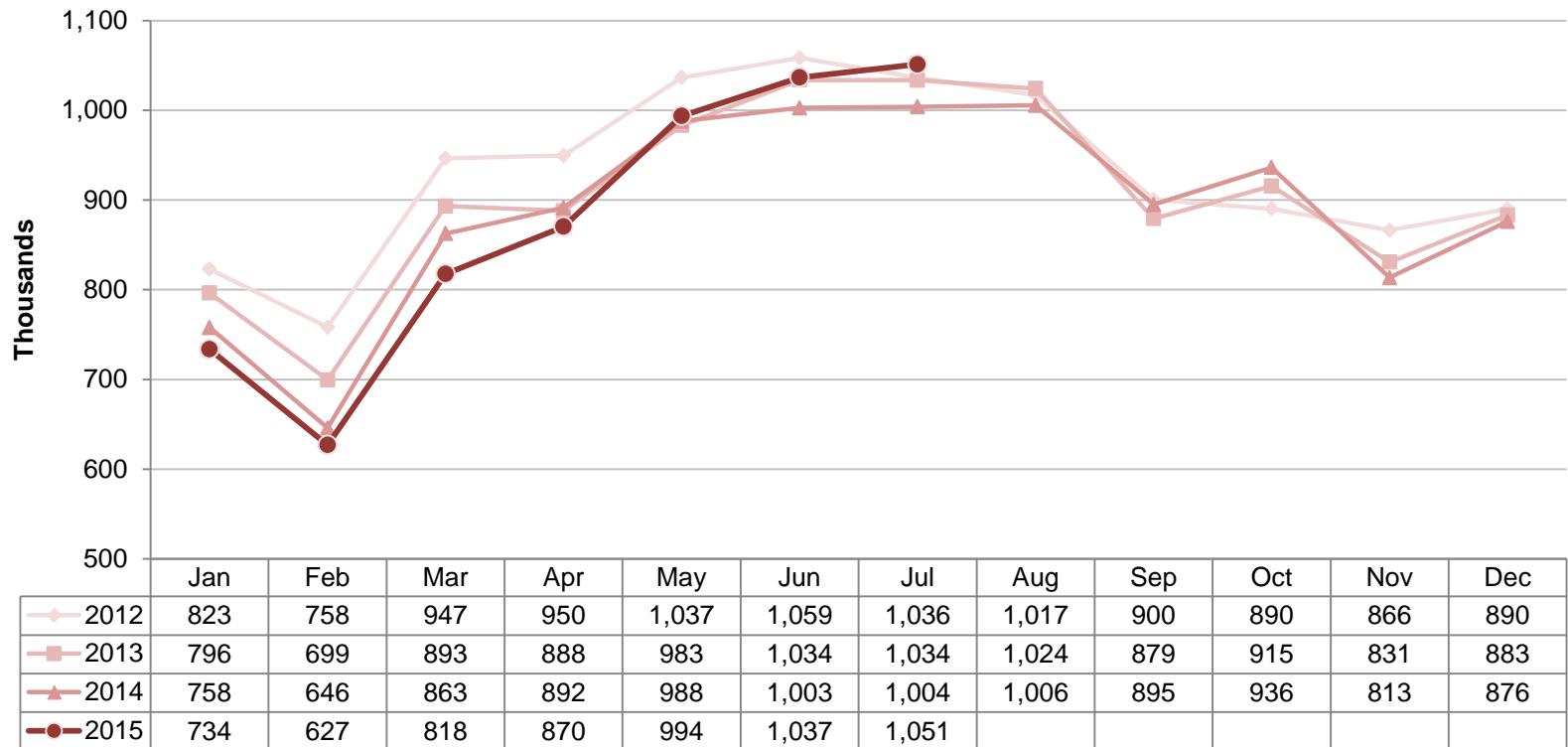


Ronald Reagan Washington National Airport
Total Commercial Passenger Enplanements
Calendar Years 2012 - 2015



	Jan	Feb	Mar	Apr	May	Jun	Jul	Aug	Sep	Oct	Nov	Dec
◆ 2012	621	653	825	829	858	884	897	930	787	866	846	793
■ 2013	729	717	894	873	943	913	921	920	777	876	804	831
▲ 2014	739	684	841	912	960	912	906	903	826	960	920	895
● 2015	752	741	966	992	1033	1021	1068					

Dulles International Airport
Total Commercial Passenger Enplanements
Calendar Years 2012 - 2015



**Commercial Passenger Market Share and Percent Change of Top Airlines
in the Washington and Baltimore Region**

July 2015				July 2014				
National	Top Airlines*	Percent Change	Passengers	Market Share	Top Airlines*	Passengers	Market Share	
	1. American + US Airways	9.4%	1,087,414	51.3%	1. American + US Airways	994,026	55.2%	
	2. Delta	0.6%	285,497	13.5%	2. Delta	283,678	15.8%	
	3. Southwest + Airtran	144.0%	283,371	13.4%	3. United	159,039	8.8%	
	4. JetBlue	23.0%	173,609	8.2%	4. JetBlue	141,160	7.8%	
	5. United	1.3%	161,044	7.6%	5. Southwest + Airtran	116,112	6.5%	
	6. Alaska	-0.2%	38,122	1.8%	6. Alaska	38,200	2.1%	
	7. Frontier	12.1%	31,075	1.5%	7. Frontier	27,728	1.5%	
	8. Air Canada	14.5%	24,727	1.2%	8. Air Canada	21,589	1.2%	
	9. Virgin America	203.5%	23,142	1.1%	9. Sun Country	10,611	0.6%	
	10. Sun Country	10.7%	11,747	0.6%	10. Virgin America	7,626	0.4%	
Total Commercial Passengers		17.8%	2,119,748	100.0%	Total Commercial Passengers		1,799,769	100.0%
Dulles	Top Airlines*	Percent Change	Passengers	Market Share	Top Airlines*	Passengers	Market Share	
	1. United	-2.2%	1,272,220	60.1%	1. United	1,301,161	64.1%	
	2. American + US Airways	4.1%	104,197	4.9%	2. American + US Airways	100,102	4.9%	
	3. Delta	10.6%	84,067	4.0%	3. Delta	76,033	3.7%	
	4. Frontier	N/A	69,151	3.3%	4. Southwest	52,408	2.6%	
	5. Southwest	4.7%	54,845	2.6%	5. Lufthansa	44,830	2.2%	
	6. Lufthansa	20.2%	53,875	2.5%	6. Air France	41,849	2.1%	
	7. Air France	7.2%	44,842	2.1%	7. Virgin America	38,867	1.9%	
	8. British Airways	0.8%	38,628	1.8%	8. British Airways	38,322	1.9%	
	9. Virgin America	-2.9%	37,726	1.8%	9. JetBlue	36,937	1.8%	
	10. TACA + Avianca	-7.4%	29,863	1.4%	10. TACA + Avianca	32,234	1.6%	
	11. All Other Airlines	22.5%	326,071	15.4%	11. All Other Airlines	266,223	13.1%	
Total Commercial Passengers		4.3%	2,115,485	100.0%	Total Commercial Passengers		2,028,966	100.0%
Baltimore	Top Airlines*	Percent Change	Passengers	Market Share	Top Airlines*	Passengers	Market Share	
	1. Southwest + Airtran	7.8%	1,655,226	70.0%	1. Southwest + Airtran	1,536,088	70.8%	
	2. American + US Airways	9.1%	221,181	9.4%	2. American + US Airways	202,820	9.4%	
	3. Delta	-3.2%	183,394	7.8%	3. Delta	189,398	8.7%	
	4. United + Continental	7.0%	110,853	4.7%	4. United + Continental	103,640	4.8%	
	5. Spirit	41.0%	95,061	4.0%	5. Spirit	67,429	3.1%	
	6. JetBlue	-2.8%	28,303	1.2%	6. JetBlue	29,130	1.3%	
	7. British Airways	3.0%	10,667	0.5%	7. British Airways	10,356	0.5%	
	8. Alaska		5,014		8. Alaska	N/A	N/A	
	9. All Other Airlines	88.3%	55,173	2.3%	9. All Other Airlines	29,296	1.4%	
Total Commercial Passengers		9.1%	2,364,872	100.0%	Total Commercial Passengers		2,168,157	100.0%

* Includes affiliated regional carriers

Commercial Passenger Market Share Summary

	Jul 2015	Jul 2014	Change
Total Passengers			
National	32.1%	30.0%	2.1%
Dulles	32.1%	33.8%	-1.8%
Baltimore	35.8%	36.2%	-0.3%
Domestic Passengers			
National	36.5%	34.4%	2.1%
Dulles	24.3%	25.0%	-0.6%
Baltimore	39.2%	40.6%	-1.5%
International Passengers			
National	4.7%	4.6%	0.1%
Dulles	80.2%	85.2%	-5.0%
Baltimore	15.1%	10.2%	4.9%

Totals may not sum due to rounding.

Metropolitan Washington Airports Authority
Ronald Reagan Washington National Airport
Monthly Air Traffic Summary Report
July 2015

Description	Enplaned	Deplaned	Total	Year Ago	% Change
Aircraft Operations					
Commercial:					
Air Carrier:					
Domestic			12,846	10,287	24.9
International			140	142	- 1.4
Transborder			0	0	0.0
Total - Air Carrier			12,986	10,429	24.5
Regional:					
Domestic			11,458	11,572	- 1.0
International			0	0	0.0
Transborder			589	608	- 3.1
Total - Regional			12,047	12,180	- 1.1
Commercial:					
Domestic			24,304	21,859	11.2
Transborder			729	750	- 2.8
Total - Commercial			25,033	22,609	10.7
Non-Commercial:					
General Aviation			256	233	9.9
Military			299	296	1.0
Total - Non-Commercial			555	529	4.9
Grand Total - Aircraft Operations			25,588	23,138	10.6
Passengers					
Commercial:					
Air Carrier Domestic:					
Scheduled	758,114	745,512	1,503,626	1,199,358	25.4
Chartered	0	0	0	0	0.0
Total - Domestic Air Carrier	758,114	745,512	1,503,626	1,199,358	25.4
Air Carrier International:					
Scheduled	6,635	6,861	13,496	13,177	2.4
Chartered	0	0	0	0	0.0
Total - International Air Carrier	6,635	6,861	13,496	13,177	2.4
Air Carrier Transborder:					
Scheduled	0	0	0	0	0.0
Chartered	0	0	0	0	0.0
Total - Transborder Air Carrier	0	0	0	0	0.0
Total - Air Carrier	764,749	752,373	1,517,122	1,212,535	25.1
Regional:					
Domestic	288,783	284,253	573,036	559,900	2.3
International	0	0	0	0	0.0
Transborder	14,670	14,920	29,590	27,334	8.3
Total - Regional	303,453	299,173	602,626	587,234	2.6
Commercial:					
Domestic	1,046,897	1,029,765	2,076,662	1,759,258	18.0
Transborder	21,305	21,781	43,086	40,511	6.4
Total - Commercial	1,068,202	1,051,546	2,119,748	1,799,769	17.8
Non-Commercial:					
General Aviation	531	501	1,032	1,154	- 10.6
Military	245	205	450	419	7.4
Total - Non-Commercial	776	706	1,482	1,573	- 5.8
Grand Total - Passengers	1,068,978	1,052,252	2,121,230	1,801,342	17.8

**Metropolitan Washington Airports Authority
Ronald Reagan Washington National Airport
Monthly Air Traffic Summary Report
July 2015**

Description	Enplaned	Deplaned	Total	Year Ago	% Change
Cargo - Tonnes					
Mail:					
Domestic	18	0	18	30	- 37.8
International	0	0	0	0	0.0
Transborder	0	0	0	0	0.0
Total - Mail:	18	0	18	30	- 37.8
Freight + Express:					
Domestic	154	60	214	129	65.8
International	3	0	3	0	100.0
Transborder	0	0	0	0	- 15.4
Total - Freight + Express:	157	60	217	129	68.0
Mail Plus Freight + Express:					
Domestic	172	60	232	158	46.5
Transborder	3	0	3	0	3,737.1
Grand Total - Cargo	175	60	235	159	48.3

NOTE: Figures may not sum to total due to rounding.

Metropolitan Washington Airports Authority
Ronald Reagan Washington National Airport
Monthly Air Traffic Summary Report
January 2015 - July 2015

Description	Enplaned	Deplaned	Total	Year Ago	% Change
Aircraft Operations					
Commercial:					
Air Carrier:					
Domestic			86,119	69,019	24.8
International			594	330	80.0
Transborder			0	0	0.0
Total - Air Carrier			86,713	69,349	25.0
Regional:					
Domestic			75,466	85,448	- 11.7
International			110	162	- 32.1
Transborder			4,093	4,837	- 15.4
Total - Regional			79,669	90,447	- 11.9
Commercial:					
Domestic			161,585	154,467	4.6
Transborder			4,797	5,329	- 10.0
Total - Commercial			166,382	159,796	4.1
Non-Commercial:					
General Aviation			1,846	2,466	- 25.1
Military			1,980	1,499	32.1
Total - Non-Commercial			3,826	3,965	- 3.5
Grand Total - Aircraft Operations			170,208	163,761	3.9
Passengers					
Commercial:					
Air Carrier Domestic:					
Scheduled	4,668,321	4,711,248	9,379,569	7,776,798	20.6
Chartered	145	145	290	0	100.0
Total - Domestic Air Carrier	4,668,466	4,711,393	9,379,859	7,776,798	20.6
Air Carrier International:					
Scheduled	22,904	24,104	47,008	30,033	56.5
Chartered	0	0	0	0	0.0
Total - International Air Carrier	22,904	24,104	47,008	30,033	56.5
Air Carrier Transborder:					
Scheduled	0	0	0	0	0.0
Chartered	0	0	0	0	0.0
Total - Transborder Air Carrier	0	0	0	0	0.0
Total - Air Carrier	4,691,370	4,735,497	9,426,867	7,806,831	20.8
Regional:					
Domestic	1,786,139	1,799,102	3,585,241	3,927,919	- 8.7
International	2,982	3,121	6,103	9,643	- 36.7
Transborder	93,165	90,467	183,632	194,940	- 5.8
Total - Regional	1,882,286	1,892,690	3,774,976	4,132,502	- 8.7
Commercial:					
Domestic	6,454,605	6,510,495	12,965,100	11,704,717	10.8
Transborder	119,051	117,692	236,743	234,616	0.9
Total - Commercial	6,573,656	6,628,187	13,201,843	11,939,333	10.6
Non-Commercial:					
General Aviation	5,776	5,639	11,415	10,648	7.2
Military	2,128	1,996	4,124	4,528	- 8.9
Total - Non-Commercial	7,904	7,635	15,539	15,176	2.4
Grand Total - Passengers	6,581,560	6,635,822	13,217,382	11,954,509	10.6

Metropolitan Washington Airports Authority
Ronald Reagan Washington National Airport
Monthly Air Traffic Summary Report
January 2015 - July 2015

Description	Enplaned	Deplaned	Total	Year Ago	% Change
Cargo - Tonnes					
Mail:					
Domestic	152	1	152	215	- 29.2
International	0	3	3	0	100.0
Transborder	0	0	0	0	0.0
Total - Mail:	152	4	155	215	- 27.8
Freight + Express:					
Domestic	1,014	556	1,570	1,014	54.7
International	3	0	3	0	100.0
Transborder	0	0	0	1	- 29.5
Total - Freight + Express:	1,017	556	1,573	1,015	55.0
Mail Plus Freight + Express:					
Domestic	1,165	557	1,722	1,229	40.0
Transborder	3	3	7	1	993.2
Grand Total - Cargo	1,169	560	1,729	1,230	40.5

NOTE: Figures may not sum to total due to rounding.

Metropolitan Washington Airports Authority
Ronald Reagan Washington National Airport
Monthly Air Traffic Summary Report
August 2014 - July 2015

Description	Enplaned	Deplaned	Total	Year Ago	% Change
Aircraft Operations					
Commercial:					
Air Carrier:					
Domestic			143,656	119,206	20.5
International			958	416	130.3
Transborder			0	0	0.0
Total - Air Carrier			144,614	119,622	20.9
Regional:					
Domestic			131,250	149,537	- 12.2
International			110	289	- 61.9
Transborder			7,205	8,472	- 15.0
Total - Regional			138,565	158,298	- 12.5
Commercial:					
Domestic			274,906	268,743	2.3
Transborder			8,273	9,177	- 9.9
Total - Commercial			283,179	277,920	1.9
Non-Commercial:					
General Aviation			3,120	4,323	- 27.8
Military			3,328	2,595	28.2
Total - Non-Commercial			6,448	6,918	- 6.8
Grand Total - Aircraft Operations			289,627	284,838	1.7
Passengers					
Commercial:					
Air Carrier Domestic:					
Scheduled	7,790,456	7,671,495	15,461,951	13,226,197	16.9
Chartered	145	145	290	0	100.0
Total - Domestic Air Carrier	7,790,601	7,671,640	15,462,241	13,226,197	16.9
Air Carrier International:					
Scheduled	36,348	37,461	73,809	38,756	90.4
Chartered	0	0	0	0	0.0
Total - International Air Carrier	36,348	37,461	73,809	38,756	90.4
Air Carrier Transborder:					
Scheduled	0	0	0	0	0.0
Chartered	0	0	0	0	0.0
Total - Transborder Air Carrier	0	0	0	0	0.0
Total - Air Carrier	7,826,949	7,709,101	15,536,050	13,264,953	17.1
Regional:					
Domestic	3,088,139	3,099,461	6,187,600	6,699,336	- 7.6
International	2,982	3,121	6,103	17,111	- 64.3
Transborder	159,529	157,612	317,141	339,772	- 6.7
Total - Regional	3,250,650	3,260,194	6,510,844	7,056,219	- 7.7
Commercial:					
Domestic	10,878,740	10,771,101	21,649,841	19,925,533	8.7
Transborder	198,859	198,194	397,053	395,639	0.4
Total - Commercial	11,077,599	10,969,295	22,046,894	20,321,172	8.5
Non-Commercial:					
General Aviation	9,946	9,712	19,658	16,496	19.2
Military	3,419	3,289	6,708	7,217	- 7.1
Total - Non-Commercial	13,365	13,001	26,366	23,713	11.2
Grand Total - Passengers	11,090,964	10,982,296	22,073,260	20,344,885	8.5

Metropolitan Washington Airports Authority
Ronald Reagan Washington National Airport
Monthly Air Traffic Summary Report
August 2014 - July 2015

Description	Enplaned	Deplaned	Total	Year Ago	% Change
Cargo - Tonnes					
Mail:					
Domestic	263	12	275	269	2.3
International	0	3	3	0	100.0
Transborder	0	0	0	0	0.0
Total - Mail:	263	15	279	269	3.5
Freight + Express:					
Domestic	1,495	842	2,337	1,642	42.3
International	3	0	3	0	100.0
Transborder	1	0	1	1	- 44.8
Total - Freight + Express:	1,498	843	2,341	1,644	42.4
Mail Plus Freight + Express:					
Domestic	1,758	854	2,613	1,912	36.7
Transborder	4	4	7	1	432.2
Grand Total - Cargo	1,762	858	2,620	1,913	36.9

NOTE: Figures may not sum to total due to rounding.

Metropolitan Washington Airports Authority
Washington Dulles International Airport
Monthly Air Traffic Summary Report
July 2015

Description	Enplaned	Deplaned	Total	Year Ago	% Change
Aircraft Operations					
Commercial:					
Air Carrier:					
Domestic			7,258	6,139	18.2
International			3,430	3,493	- 1.8
Transborder			0	0	0.0
Total - Air Carrier			10,688	9,632	11.0
Regional:					
Domestic			9,604	11,226	- 14.4
International			56	0	100.0
Transborder			227	1,022	- 77.8
Total - Regional			9,887	12,248	- 19.3
Commercial:					
Domestic			16,862	17,365	- 2.9
International			3,713	4,515	- 17.8
Total - Commercial			20,575	21,880	- 6.0
Non-Commercial:					
General Aviation			2,738	2,960	- 7.5
Military			42	41	2.4
Total - Non-Commercial			2,780	3,001	- 7.4
Grand Total - Aircraft Operations			23,355	24,881	- 6.1
Passengers					
Commercial:					
Air Carrier Domestic:					
Scheduled	455,204	440,720	895,924	807,781	10.9
Chartered	152	189	341	505	- 32.5
Total - Domestic Air Carrier	455,356	440,909	896,265	808,286	10.9
Air Carrier International:					
Scheduled	342,715	374,481	717,196	706,111	1.6
Chartered	665	509	1,174	988	18.8
Total - International Air Carrier	343,380	374,990	718,370	707,099	1.6
Air Carrier Transborder:					
Scheduled	0	0	0	0	0.0
Chartered	0	0	0	0	0.0
Total - Transborder Air Carrier	0	0	0	0	0.0
Total - Air Carrier	798,736	815,899	1,614,635	1,515,385	6.5
Regional:					
Domestic	245,906	242,159	488,065	467,814	4.3
International	1,276	1,294	2,570	1,133	126.8
Transborder	5,330	4,885	10,215	44,634	- 77.1
Total - Regional	252,512	248,338	500,850	513,581	- 2.5
Commercial:					
Domestic	701,262	683,068	1,384,330	1,276,100	8.5
International	349,986	381,169	731,155	752,866	- 2.9
Total - Commercial	1,051,248	1,064,237	2,115,485	2,028,966	4.3
Non-Commercial:					
General Aviation	5,313	5,552	10,865	11,860	- 8.4
Military	1	0	1	0	100.0
Total - Non-Commercial	5,314	5,552	10,866	11,860	- 8.4
Grand Total - Passengers	1,056,562	1,069,789	2,126,351	2,040,826	4.2

Metropolitan Washington Airports Authority
Washington Dulles International Airport
Monthly Air Traffic Summary Report
July 2015

Description	Enplaned	Deplaned	Total	Year Ago	% Change
Cargo - Tonnes					
Mail:					
Domestic	520	489	1,009	520	94.0
International	196	152	348	168	107.2
Total - Mail:	716	641	1,357	688	97.2
Freight + Express:					
Domestic	3,942	3,327	7,269	7,222	0.6
International	4,772	8,578	13,350	14,934	- 10.6
Total - Freight + Express:	8,714	11,905	20,619	22,156	- 6.9
Mail Plus Freight + Express:					
Domestic	4,461	3,817	8,278	7,742	6.9
International	4,968	8,729	13,697	15,102	- 9.3
Grand Total - Cargo	9,430	12,546	21,975	22,844	- 3.8

NOTE: Figures may not sum to total due to rounding.

Metropolitan Washington Airports Authority
Washington Dulles International Airport
Monthly Air Traffic Summary Report
January 2015 - July 2015

Description	Enplaned	Deplaned	Total	Year Ago	% Change
Aircraft Operations					
Commercial:					
Air Carrier:					
Domestic			45,434	39,434	15.2
International			20,744	21,148	- 1.9
Transborder			2	0	100.0
Total - Air Carrier			66,180	60,582	9.2
Regional:					
Domestic			64,689	78,590	- 17.7
International			1,675	330	407.6
Transborder			1,285	5,338	- 75.9
Total - Regional			67,649	84,258	- 19.7
Commercial:					
Domestic			110,123	118,024	- 6.7
International			23,706	26,816	- 11.6
Total - Commercial			133,829	144,840	- 7.6
Non-Commercial:					
General Aviation			21,903	23,093	- 5.2
Military			261	353	- 26.1
Total - Non-Commercial			22,164	23,446	- 5.5
Grand Total - Aircraft Operations			155,993	168,286	- 7.3
Passengers					
Commercial:					
Air Carrier Domestic:					
Scheduled	2,606,838	2,641,274	5,248,112	4,951,055	6.0
Chartered	3,212	2,312	5,524	7,811	- 29.3
Total - Domestic Air Carrier	2,610,050	2,643,586	5,253,636	4,958,866	5.9
Air Carrier International:					
Scheduled	1,927,641	1,960,268	3,887,909	3,892,678	- 0.1
Chartered	4,377	4,174	8,551	5,815	47.1
Total - International Air Carrier	1,932,018	1,964,442	3,896,460	3,898,493	- 0.1
Air Carrier Transborder:					
Scheduled	0	0	0	0	0.0
Chartered	0	64	64	0	100.0
Total - Transborder Air Carrier	0	64	64	0	100.0
Total - Air Carrier	4,542,068	4,608,092	9,150,160	8,857,359	3.3
Regional:					
Domestic	1,526,519	1,518,811	3,045,330	3,243,812	- 6.1
International	33,651	37,925	71,576	18,956	277.6
Transborder	28,038	27,031	55,069	234,252	- 76.5
Total - Regional	1,588,208	1,583,767	3,171,975	3,497,020	- 9.3
Commercial:					
Domestic	4,136,569	4,162,397	8,298,966	8,202,678	1.2
International	1,993,707	2,029,462	4,023,169	4,151,701	- 3.1
Total - Commercial	6,130,276	6,191,859	12,322,135	12,354,379	- 0.3
Non-Commercial:					
General Aviation	44,254	43,791	88,045	87,571	0.5
Military	398	371	769	316	143.4
Total - Non-Commercial	44,652	44,162	88,814	87,887	1.1
Grand Total - Passengers	6,174,928	6,236,021	12,410,949	12,442,266	- 0.3

Metropolitan Washington Airports Authority
Washington Dulles International Airport
Monthly Air Traffic Summary Report
January 2015 - July 2015

Description	Enplaned	Deplaned	Total	Year Ago	% Change
Cargo - Tonnes					
Mail:					
Domestic	2,653	2,576	5,229	4,027	29.9
International	876	1,119	1,995	1,679	18.8
Total - Mail:	3,528	3,696	7,224	5,706	26.6
Freight + Express:					
Domestic	25,668	21,431	47,099	46,498	1.3
International	36,290	62,335	98,625	102,200	- 3.5
Total - Freight + Express:	61,958	83,766	145,724	148,698	- 2.0
Mail Plus Freight + Express:					
Domestic	28,321	24,007	52,328	50,525	3.6
International	37,165	63,454	100,620	103,879	- 3.1
Grand Total - Cargo	65,486	87,462	152,948	154,404	- 0.9

NOTE: Figures may not sum to total due to rounding.

Metropolitan Washington Airports Authority
Washington Dulles International Airport
Monthly Air Traffic Summary Report
August 2014 - July 2015

Description	Enplaned	Deplaned	Total	Year Ago	% Change
Aircraft Operations					
Commercial:					
Air Carrier:					
Domestic			77,550	70,564	9.9
International			35,523	36,036	- 1.4
Transborder			2	1	100.0
Total - Air Carrier			113,075	106,601	6.1
Regional:					
Domestic			120,146	139,248	- 13.7
International			1,705	433	293.8
Transborder			3,940	9,854	- 60.0
Total - Regional			125,791	149,535	- 15.9
Commercial:					
Domestic			197,696	209,812	- 5.8
International			41,170	46,324	- 11.1
Total - Commercial			238,866	256,136	- 6.7
Non-Commercial:					
General Aviation			37,775	40,099	- 5.8
Military			448	747	- 40.0
Total - Non-Commercial			38,223	40,846	- 6.4
Grand Total - Aircraft Operations			277,089	296,982	- 6.7
Passengers					
Commercial:					
Air Carrier Domestic:					
Scheduled	4,458,473	4,518,566	8,977,039	8,634,863	4.0
Chartered	6,047	5,032	11,079	15,543	- 28.7
Total - Domestic Air Carrier	4,464,520	4,523,598	8,988,118	8,650,406	3.9
Air Carrier International:					
Scheduled	3,327,840	3,366,331	6,694,171	6,635,146	0.9
Chartered	6,721	6,658	13,379	9,748	37.2
Total - International Air Carrier	3,334,561	3,372,989	6,707,550	6,644,894	0.9
Air Carrier Transborder:					
Scheduled	0	0	0	0	0.0
Chartered	0	64	64	189	- 66.1
Total - Transborder Air Carrier	0	64	64	189	- 66.1
Total - Air Carrier	7,799,081	7,896,651	15,695,732	15,295,489	2.6
Regional:					
Domestic	2,732,596	2,700,992	5,433,588	5,698,407	- 4.6
International	36,278	39,909	76,187	23,732	221.0
Transborder	88,934	93,700	182,634	427,619	- 57.3
Total - Regional	2,857,808	2,834,601	5,692,409	6,149,758	- 7.4
Commercial:					
Domestic	7,197,116	7,224,590	14,421,706	14,348,813	0.5
International	3,459,773	3,506,662	6,966,435	7,096,434	- 1.8
Total - Commercial	10,656,889	10,731,252	21,388,141	21,445,247	- 0.3
Non-Commercial:					
General Aviation	77,002	74,729	151,731	148,767	2.0
Military	527	517	1,044	792	31.8
Total - Non-Commercial	77,529	75,246	152,775	149,559	2.2
Grand Total - Passengers	10,734,418	10,806,498	21,540,916	21,594,806	- 0.2

Metropolitan Washington Airports Authority
Washington Dulles International Airport
Monthly Air Traffic Summary Report
August 2014 - July 2015

Description	Enplaned	Deplaned	Total	Year Ago	% Change
Cargo - Tonnes					
Mail:					
Domestic	3,879	4,485	8,365	7,000	19.5
International	2,602	1,948	4,549	9,032	- 49.6
Total - Mail:	6,481	6,433	12,914	16,031	- 19.4
Freight + Express:					
Domestic	44,851	37,721	82,572	80,608	2.4
International	60,885	109,927	170,812	165,474	3.2
Total - Freight + Express:	105,736	147,648	253,384	246,082	3.0
Mail Plus Freight + Express:					
Domestic	48,730	42,206	90,937	87,607	3.8
International	63,486	111,875	175,361	174,506	0.5
Grand Total - Cargo	112,217	154,081	266,298	262,113	1.6

NOTE: Figures may not sum to total due to rounding.