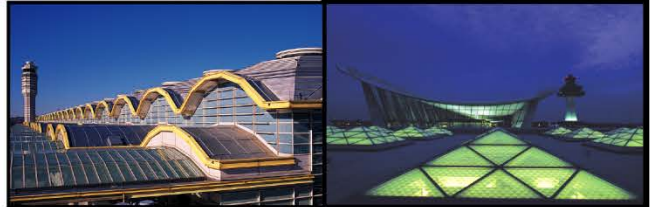


September
2015

Air Traffic Statistics



METROPOLITAN WASHINGTON AIRPORTS AUTHORITY



Metropolitan Washington Airports Authority

Air Traffic Statistics

Table of Contents

Summary

Air Traffic Summary	1
SH&E Air Traffic Schedule Activity.....	3
Passenger Trends.....	5
Total Passengers 4-Year Comparison - DCA, IAD, BWI.....	6
Total Commercial Passenger Enplanements.....	7
Market Share and Percentage of Top Airlines - DCA, IAD, BWI.....	9

Air Traffic Statistics - DCA

Monthly Air Traffic Summary – Current Month.....	10
Monthly Air Traffic Summary – Year-to-Date	12
Monthly Air Traffic Summary – Last 12 Months	14

Air Traffic Statistics - IAD

Monthly Air Traffic Summary – Current Month.....	16
Monthly Air Traffic Summary – Year-to-Date	18
Monthly Air Traffic Summary – Last 12 Months	20

Air Traffic Summary September 2015

		Passenger Activity (in Millions)								
		Current Month			Year-to-Date			Last 12 Months		
		DCA	IAD	System	DCA	IAD	System	DCA	IAD	System
Commercial	Dom									
	Passengers	1.9	1.3	3.1	16.8	10.9	27.8	22.1	14.6	36.7
	% Change	13.0%	4.5%	9.4%	11.3%	2.2%	7.5%	10.5%	1.8%	6.9%
	Int'l									
Passengers	< 0.1	0.6	0.6	0.3	5.3	5.7	0.4	6.9	7.3	
% Change	(3.4%)	(1.5%)	(1.6%)	(0.3%)	(3.0%)	(2.9%)	(0.6%)	(3.0%)	(2.9%)	
Total	Passengers	1.9	1.9	3.8	17.2	16.4	33.5	22.5	21.6	44.2
	% Change	12.8%	2.5%	7.4%	11.1%	0.4%	5.6%	10.3%	0.2%	5.1%

Note: System totals may not sum due to rounding.

U.S. industry average passenger enplanements as reported by Airlines for America (A4A):

Enplanements	Current Month	Year-to-Date
System	7.2%	4.7%
Domestic	7.4%	4.8%
International	5.8%	4.3%

Ronald Reagan Washington National Airport

- Domestic commercial passenger activity increased 13.0% in September 2015 compared to September 2014. Significant activity by carrier follows:

Airline	Comments
American + US Airways	<ul style="list-style-type: none"> 4.7% increase in passenger activity from September 2014 Increased service to Manchester in November 2014; Burlington in March 2015; Dayton in May 2015; Greenville / Spartanburg, Miami, Portland, Pensacola, and Providence in June 2015; Buffalo, Rochester, and Westchester County in September 2015 as well as resumed service to Detroit in November 2014
Southwest + AirTran	<ul style="list-style-type: none"> 79.5% increase in passenger activity from slots divested by American New service to Tampa and Dallas Love in October 2014; Akron and Indianapolis in November 2014; Columbus in April 2015; and Fort Lauderdale in August 2015 Increased service to Chicago in October 2014, Houston and St. Louis in November 2014, and Kansas City in August 2015 Reduced service to Milwaukee in November 2014, Atlanta in January 2015, New Orleans in June 2015, and Nashville in August 2015
Virgin America	<ul style="list-style-type: none"> 174.8% increase in passenger activity with new service to Dallas Love in October 2014
JetBlue	<ul style="list-style-type: none"> 29.2% increase in passenger activity from slots divested by American New service to Fort Myers, Jacksonville, and West Palm Beach in December 2014 Increased service to Ft. Lauderdale and Orlando in January 2015

- Transborder passenger traffic decreased 3.4% in September 2015 due to reduced service to Toronto by American + US Airways and Nassau by JetBlue.
- The combined American + US Airways operations, including its regional affiliates, had the largest commercial passenger market share of 50.3%, a decrease compared to 54.2% in September 2014.

Washington Dulles International Airport

Domestic Passenger Activity

- Domestic commercial passenger activity increased 4.5% in September 2015 compared to September 2014. Significant activity by carrier follows:

Airline	Comments
United	<ul style="list-style-type: none">• 4.3% increase in passenger activity due to an increase in load factors that outpaced the decrease in capacity• Increased service to Tampa in March 2015; St. Louis and Columbus in March 2015; Newark and Savannah in April 2015; Cincinnati in May 2015; San Diego and Dallas/Fort Worth in June 2015; Detroit in July 2015; and Greenville / Spartanburg in September 2015• Discontinued service to 12 domestic destinations, including five now being served by Silver Airways• Reduced service for 31 destinations based on demand throughout the system
Delta	<ul style="list-style-type: none">• 8.0% increase due to increased service to New York JFK in March 2015
Frontier	<ul style="list-style-type: none">• 13.5% decline in passenger activity• Reduced service to Cincinnati, Detroit, Memphis, and Minneapolis in May 2015• Discontinued service to Charlotte, St. Augustine, and St. Louis in January 2015; Tampa in February 2015; Fort Lauderdale and Fort Myers in April 2015• New service to Chicago O'Hare in October 2014 and Miami in January 2015
Alaska	<ul style="list-style-type: none">• New service began in March 2015

International Passenger Activity

- September 2015 international commercial passenger traffic decreased 1.5%. Significant activity by carrier follows:

Airline	Comments
United	<ul style="list-style-type: none">• 9.9% decrease in passenger activity• Reduced service to Toronto in December 2014 and Dublin in September 2015• Discontinued service to Halifax in October 2014• Resumed seasonal service to Madrid in May 2015
TACA + Avianca	<ul style="list-style-type: none">• 15.5% decline due to reduced service to El Salvador in February 2015
Icelandair	<ul style="list-style-type: none">• 47.3% increase due to increased service in May 2015
Air France	<ul style="list-style-type: none">• 43.2% increase as a result of higher load factors
Aer Lingus	<ul style="list-style-type: none">• New service began in May 2015

- United Airlines, including its regional affiliates, had the largest commercial passenger market share of 62.1%, a decrease compared to 62.9% in September 2014.

Cargo Activity

- For the month of September 2015, total cargo increased 3.3% at Dulles from a year earlier. Domestic cargo increased 19.2% driven by an increase on United (64.9%) and FedEx (10.6%).
- International cargo declined 4.6% led by United (-7.2%), British Airways (-26.6%), and Etihad (-52.7%). The carriers with the largest increases in international cargo were Air France (98.9%), Korean (96.2%), and Air China (38.4%).

Baltimore-Washington International Airport

- Current month commercial passenger activity increased 6.8% from September 2014, outpacing activity at Dulles by 86k commercial passengers (4.7%), and National by 47k commercial passengers (2.5%).
- Southwest's passenger market share totaled 69.1%, a decline from 70.8% in September 2014.
- Cargo activity at BWI totaled 10.3k metric tonnes, a 17.6% (1.6k metric tonnes) increase from a year earlier primarily as a result of increases on FedEx (15.7%, or 601 metric tonnes) and DHL (74.4%, or 578 metric tonnes).

Ronald Reagan Washington National Airport
 Air Traffic Schedule Activity
 September 2015 vs. September 2014

September 2015:	Daily Departures	Airlines*	Unduplicated Destinations
Domestic Passenger service information -			
Mainline	207	9	--
Regional Affiliate	<u>152</u>	<u>10</u>	--
Domestic Total	359	19	82
Transborder/International Passenger service information -			
Mainline	1	2	--
Regional Affiliate	<u>10</u>	<u>5</u>	--
Transborder/International Total	11	7	5

September 2014:	Daily Departures	Airlines*	Unduplicated Destinations
Domestic Passenger service information -			
Mainline	182	9	--
Regional Affiliate	<u>189</u>	<u>10</u>	--
Domestic Total	371	19	82
Transborder/International Passenger service information -			
Mainline	1	1	--
Regional Affiliate	<u>10</u>	<u>3</u>	--
Transborder/International Total	11	4	4

* The following airlines are counted as one airline:
 Southwest and AirTran
 American and US Airways
 Regional carriers flying for multiple mainline carriers

Source: DIIO, October 27, 2015

Washington Dulles International Airport
Air Traffic Schedule Activity
September 2015 vs. September 2014

September 2015:	Daily Departures	Airlines*	Unduplicated Destinations
Domestic			
Passenger service information -			
Mainline	105	9	--
Regional Affiliate	<u>143</u>	<u>7</u>	--
Domestic Total	248	16	78
Transborder/International			
Passenger service information -			
Mainline	52	25	--
Regional Affiliate	<u>11</u>	<u>2</u>	--
Transborder/International Total	63	27	43

September 2014:	Daily Departures	Airlines*	Unduplicated Destinations
Domestic			
Passenger service information -			
Mainline	103	9	--
Regional Affiliate	<u>181</u>	<u>12</u>	--
Domestic Total	284	21	86
Transborder/International			
Passenger service information -			
Mainline	52	26	--
Regional Affiliate	<u>12</u>	<u>6</u>	--
Transborder/International Total	64	32	42

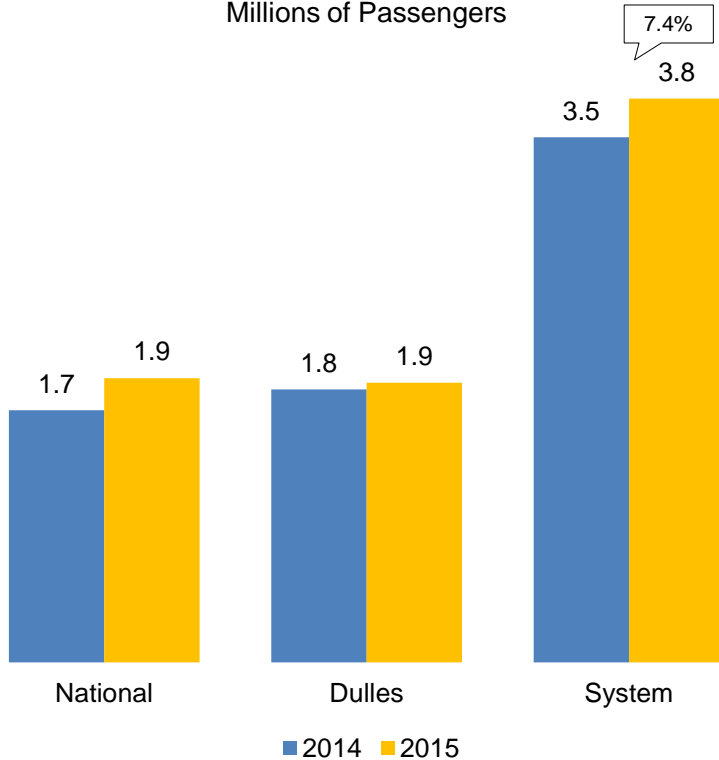
* The following airlines are counted as one airline:
Pacific Wings and Sun Air International
Avianca and TACA
American Airlines and US Airways
Austrian and Tyrolean
Regional carriers flying for multiple mainline carriers

Source: DIIQ, October 27, 2015

Passenger Trends

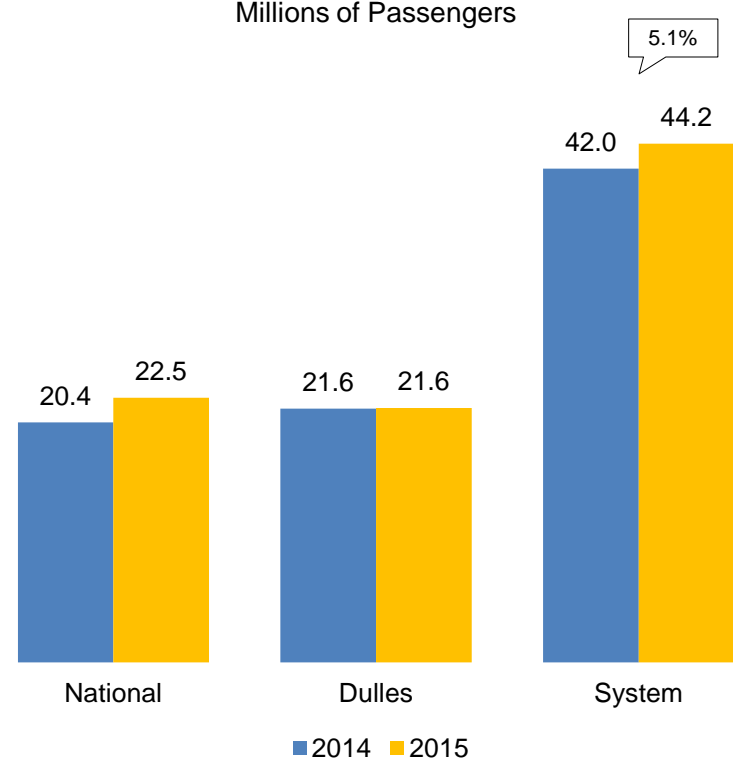
September 2015 Comparison

Millions of Passengers



Last 12-Months Comparison

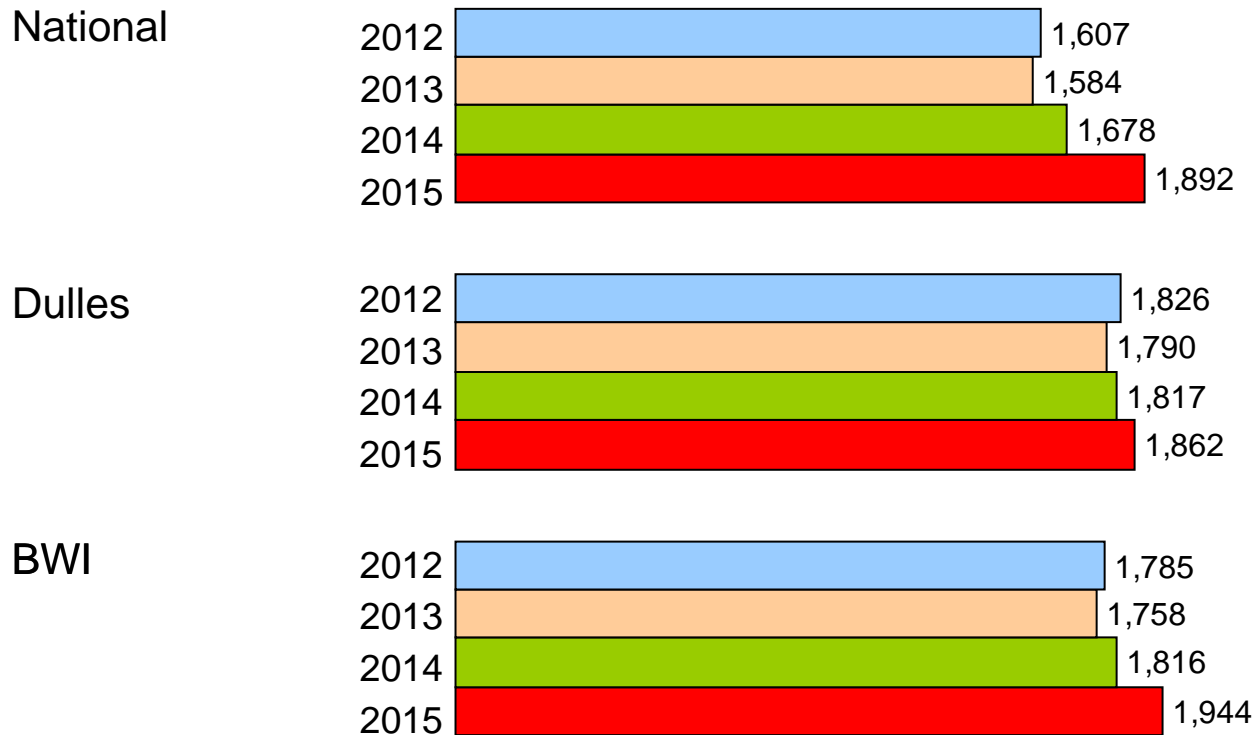
Millions of Passengers



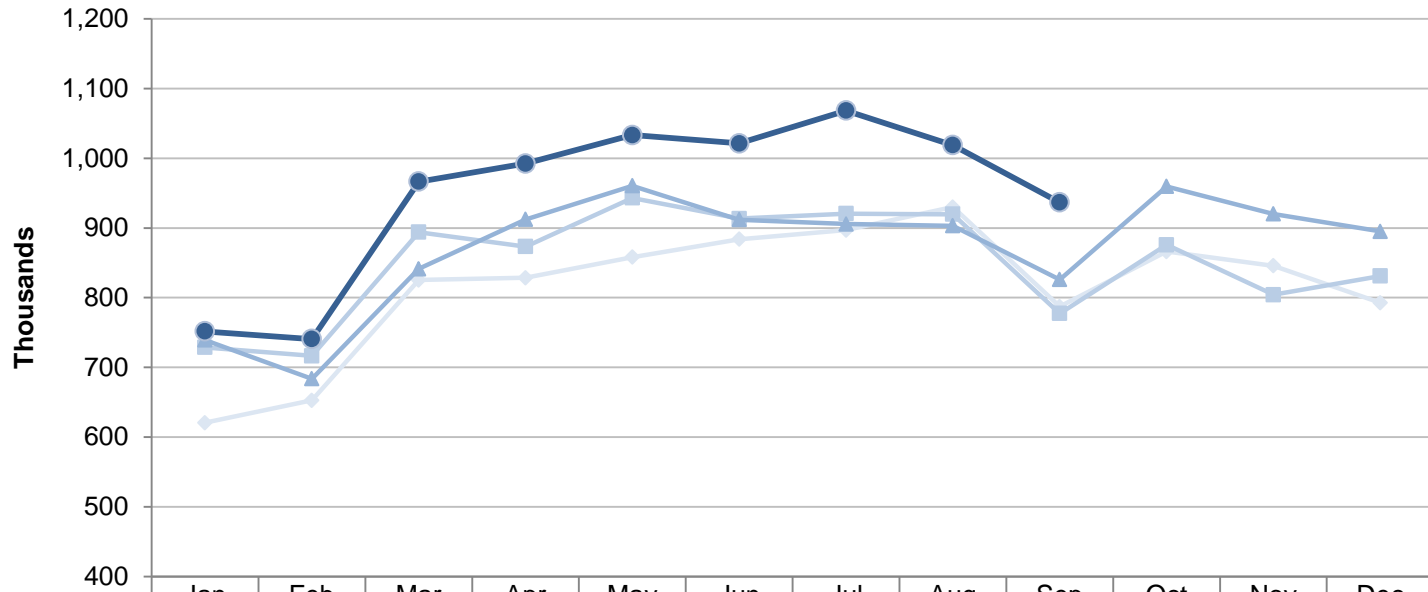
* System totals may not sum due to rounding.

Total Passengers

Four Year Comparison of the Month of September (Thousands)

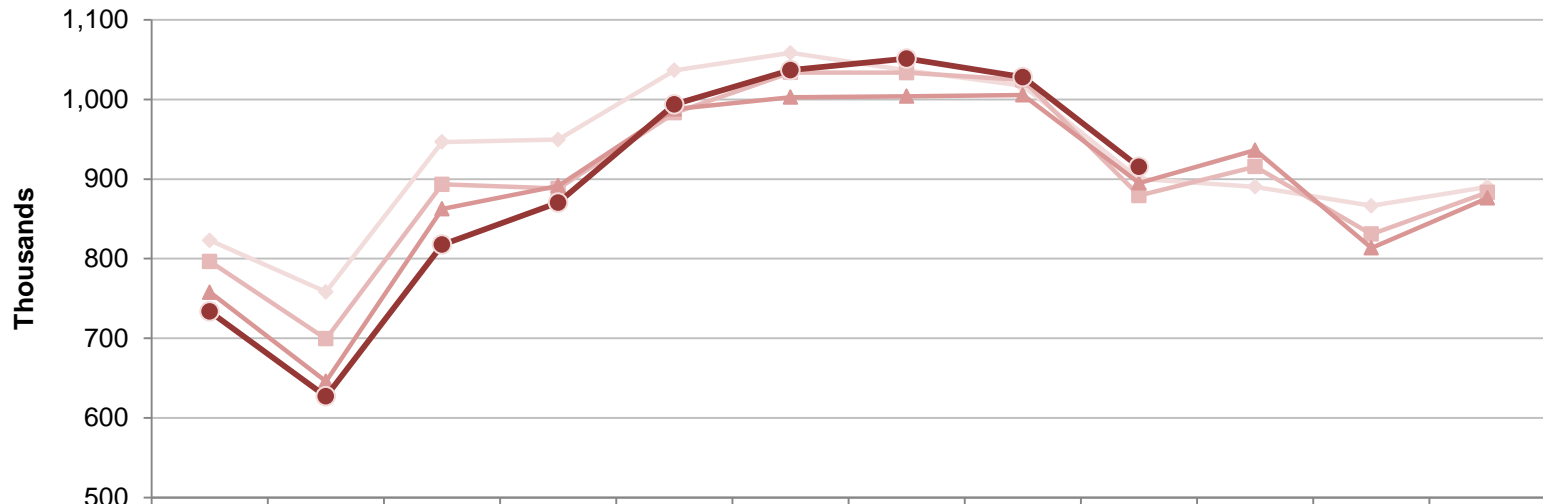


Ronald Reagan Washington National Airport
 Total Commercial Passenger Enplanements
 Calendar Years 2012 - 2015



	Jan	Feb	Mar	Apr	May	Jun	Jul	Aug	Sep	Oct	Nov	Dec
2012	621	653	825	829	858	884	897	930	787	866	846	793
2013	729	717	894	873	943	913	921	920	777	876	804	831
2014	739	684	841	912	960	912	906	903	826	960	920	895
2015	752	741	966	992	1033	1021	1068	1019	937			

Dulles International Airport
Total Commercial Passenger Enplanements
Calendar Years 2012 - 2015



	Jan	Feb	Mar	Apr	May	Jun	Jul	Aug	Sep	Oct	Nov	Dec
◆ 2012	823	758	947	950	1,037	1,059	1,036	1,017	900	890	866	890
■ 2013	796	699	893	888	983	1,034	1,034	1,024	879	915	831	883
▲ 2014	758	646	863	892	988	1,003	1,004	1,006	895	936	813	876
● 2015	734	627	818	870	994	1,037	1,051	1,028	915			

**Commercial Passenger Market Share and Percent Change of Top Airlines
in the Washington and Baltimore Region**

September 2015				September 2014			
National	Top Airlines*	Percent Change	Passengers	Market Share	Top Airlines*	Passengers	Market Share
	1. American + US Airways	4.4%	949,185	50.3%	1. American + US Airways	908,839	54.2%
	2. Delta	1.9%	266,456	14.1%	2. Delta	261,471	15.6%
	3. Southwest + Airtran	79.5%	256,110	13.6%	3. United	147,484	8.8%
	4. United	4.0%	153,364	8.1%	4. Southwest + Airtran	142,695	8.5%
	5. JetBlue	27.7%	148,211	7.8%	5. JetBlue	116,068	6.9%
	6. Alaska	1.5%	35,531	1.9%	6. Alaska	34,994	2.1%
	7. Frontier	4.9%	28,545	1.5%	7. Frontier	27,201	1.6%
	8. Air Canada	9.2%	21,784	1.2%	8. Air Canada	19,946	1.2%
	9. Virgin America	174.8%	20,734	1.1%	9. Sun Country	9,432	0.6%
	10. Sun Country	-9.9%	8,500	0.5%	10. Virgin America	7,546	0.5%
Total Commercial Passengers	12.7%	<u>1,888,420</u>	100.0%	Total Commercial Passengers	<u>1,675,676</u>	100.0%	
Dulles	Top Airlines*	Percent Change	Passengers	Market Share	Top Airlines*	Passengers	Market Share
	1. United	1.2%	1,147,985	62.1%	1. United	1,134,147	62.9%
	2. Delta	8.0%	80,669	4.4%	2. American + US Airways	77,755	4.3%
	3. American + US Airways	1.5%	78,884	4.3%	3. Delta	74,681	4.1%
	4. Frontier	-13.5%	55,168	3.0%	4. Frontier	63,757	3.5%
	5. Lufthansa	-3.2%	45,596	2.5%	5. Lufthansa	47,118	2.6%
	6. Southwest	8.1%	42,872	2.3%	6. Southwest	39,648	2.2%
	7. British Airways	6.0%	35,472	1.9%	7. British Airways	33,453	1.9%
	8. Air France	43.2%	32,019	1.7%	8. Virgin America	27,500	1.5%
	9. Virgin America	9.5%	30,099	1.6%	9. JetBlue	26,883	1.5%
	10. JetBlue	-5.5%	25,417	1.4%	10. TACA + Avianca	24,792	1.4%
	11. All Other Airlines	8.2%	<u>274,506</u>	14.8%	11. All Other Airlines	<u>253,653</u>	14.1%
Total Commercial Passengers	2.5%	<u>1,848,687</u>	100.0%	Total Commercial Passengers	<u>1,803,387</u>	100.0%	
Baltimore	Top Airlines*	Percent Change	Passengers	Market Share	Top Airlines*	Passengers	Market Share
	1. Southwest + Airtran	4.4%	1,337,743	69.1%	1. Southwest + Airtran	1,281,725	70.8%
	2. American + US Airways	0.9%	166,747	8.6%	2. Delta	165,239	9.1%
	3. Delta	-0.6%	159,524	8.2%	3. American + US Airways	160,504	8.9%
	4. United + Continental	18.4%	99,779	5.2%	4. United + Continental	84,292	4.7%
	5. Spirit	63.0%	81,697	4.2%	5. Spirit	50,126	2.8%
	6. JetBlue	-6.0%	25,994	1.3%	6. JetBlue	27,648	1.5%
	7. Alaska	85.4%	15,971	0.8%	7. British Airways	10,545	0.6%
	8. British Airways	-2.6%	10,267	0.5%	8. Alaska	8,614	0.5%
	9. All Other Airlines	18.6%	<u>37,213</u>	1.9%	9. All Other Airlines	<u>31,367</u>	1.7%
Total Commercial Passengers	6.8%	<u>1,934,935</u>	100.0%	Total Commercial Passengers	<u>1,811,446</u>	100.0%	

* Includes affiliated regional carriers

Commercial Passenger Market Share Summary

	Sep 2015	Sep 2014	Change
Total Passengers			
National	33.3%	31.7%	1.6%
Dulles	32.6%	34.1%	-1.5%
Baltimore	34.1%	34.2%	-0.1%
Domestic Passengers			
National	37.4%	35.9%	1.5%
Dulles	25.2%	26.1%	-0.9%
Baltimore	37.4%	38.0%	-0.6%
International Passengers			
National	4.0%	4.2%	-0.1%
Dulles	85.5%	86.3%	-0.8%
Baltimore	10.5%	9.6%	0.9%

Totals may not sum due to rounding.

Metropolitan Washington Airports Authority
Ronald Reagan Washington National Airport
Monthly Air Traffic Summary Report
September 2015

Description	Enplaned	Deplaned	Total	Year Ago	% Change
Aircraft Operations					
Commercial:					
Air Carrier:					
Domestic			12,316	10,819	13.8
International			66	60	10.0
Transborder			0	0	0.0
Total - Air Carrier			12,382	10,879	13.8
Regional:					
Domestic			10,755	11,204	- 4.0
International			0	0	0.0
Transborder			557	618	- 9.9
Total - Regional			11,312	11,822	- 4.3
Commercial:					
Domestic			23,071	22,023	4.8
Transborder			623	678	- 8.1
Total - Commercial			23,694	22,701	4.4
Non-Commercial:					
General Aviation			363	314	15.6
Military			265	286	- 7.3
Total - Non-Commercial			628	600	4.7
Grand Total - Aircraft Operations			24,322	23,301	4.4
Passengers					
Commercial:					
Air Carrier Domestic:					
Scheduled	672,964	684,386	1,357,350	1,134,527	19.6
Chartered	0	0	0	0	0.0
Total - Domestic Air Carrier	672,964	684,386	1,357,350	1,134,527	19.6
Air Carrier International:					
Scheduled	1,278	1,322	2,600	2,995	- 13.2
Chartered	0	0	0	0	0.0
Total - International Air Carrier	1,278	1,322	2,600	2,995	- 13.2
Air Carrier Transborder:					
Scheduled	0	0	0	0	0.0
Chartered	0	0	0	0	0.0
Total - Transborder Air Carrier	0	0	0	0	0.0
Total - Air Carrier	674,242	685,708	1,359,950	1,137,522	19.6
Regional:					
Domestic	249,411	253,554	502,965	512,067	- 1.8
International	0	0	0	0	0.0
Transborder	12,865	12,640	25,505	26,087	- 2.2
Total - Regional	262,276	266,194	528,470	538,154	- 1.8
Commercial:					
Domestic	922,375	937,940	1,860,315	1,646,594	13.0
Transborder	14,143	13,962	28,105	29,082	- 3.4
Total - Commercial	936,518	951,902	1,888,420	1,675,676	12.7
Non-Commercial:					
General Aviation	1,500	1,480	2,980	1,744	70.9
Military	320	345	665	450	47.8
Total - Non-Commercial	1,820	1,825	3,645	2,194	66.1
Grand Total - Passengers	938,338	953,727	1,892,065	1,677,870	12.8

**Metropolitan Washington Airports Authority
Ronald Reagan Washington National Airport
Monthly Air Traffic Summary Report
September 2015**

Description	Enplaned	Deplaned	Total	Year Ago	% Change
Cargo - Tonnes					
Mail:					
Domestic	10	0	10	2	340.6
International	0	0	0	0	0.0
Transborder	0	0	0	0	0.0
Total - Mail:	10	0	10	2	340.6
Freight + Express:					
Domestic	138	64	202	215	- 6.0
International	0	0	0	0	0.0
Transborder	0	0	0	0	100.0
Total - Freight + Express:	138	64	202	215	- 6.0
Mail Plus Freight + Express:					
Domestic	148	65	213	217	- 2.4
International	0	0	0	0	0.0
Transborder	0	0	0	0	100.0
Grand Total - Cargo	148	65	212	217	- 2.4

NOTE: Figures may not sum to total due to rounding.

Metropolitan Washington Airports Authority
Ronald Reagan Washington National Airport
Monthly Air Traffic Summary Report
January 2015 - September 2015

Description	Enplaned	Deplaned	Total	Year Ago	% Change
Aircraft Operations					
Commercial:					
Air Carrier:					
Domestic			111,128	90,747	22.5
International			778	512	52.0
Transborder			0	0	0.0
Total - Air Carrier			111,906	91,259	22.6
Regional:					
Domestic			97,604	108,344	- 9.9
International			110	162	- 32.1
Transborder			5,192	6,092	- 14.8
Total - Regional			102,906	114,598	- 10.2
Commercial:					
Domestic			208,732	199,091	4.8
Transborder			6,080	6,766	- 10.1
Total - Commercial			214,812	205,857	4.4
Non-Commercial:					
General Aviation			2,360	2,937	- 19.6
Military			2,571	2,046	25.7
Total - Non-Commercial			4,931	4,983	- 1.0
Grand Total - Aircraft Operations			219,743	210,840	4.2
Passengers					
Commercial:					
Air Carrier Domestic:					
Scheduled	6,066,851	6,131,653	12,198,504	10,132,822	20.4
Chartered	145	145	290	0	100.0
Total - Domestic Air Carrier	6,066,996	6,131,798	12,198,794	10,132,822	20.4
Air Carrier International:					
Scheduled	29,526	31,508	61,034	44,672	36.6
Chartered	0	0	0	0	0.0
Total - International Air Carrier	29,526	31,508	61,034	44,672	36.6
Air Carrier Transborder:					
Scheduled	0	0	0	0	0.0
Chartered	0	0	0	0	0.0
Total - Transborder Air Carrier	0	0	0	0	0.0
Total - Air Carrier	6,096,522	6,163,306	12,259,828	10,177,494	20.5
Regional:					
Domestic	2,309,427	2,329,384	4,638,811	4,996,026	- 7.1
International	2,982	3,121	6,103	9,643	- 36.7
Transborder	120,083	117,887	237,970	251,630	- 5.4
Total - Regional	2,432,492	2,450,392	4,882,884	5,257,299	- 7.1
Commercial:					
Domestic	8,376,423	8,461,182	16,837,605	15,128,848	11.3
Transborder	152,591	152,516	305,107	305,945	- 0.3
Total - Commercial	8,529,014	8,613,698	17,142,712	15,434,793	11.1
Non-Commercial:					
General Aviation	7,504	7,339	14,843	12,942	14.7
Military	2,640	2,521	5,161	5,308	- 2.8
Total - Non-Commercial	10,144	9,860	20,004	18,250	9.6
Grand Total - Passengers	8,539,158	8,623,558	17,162,716	15,453,043	11.1

Metropolitan Washington Airports Authority
Ronald Reagan Washington National Airport
Monthly Air Traffic Summary Report
January 2015 - September 2015

Description	Enplaned	Deplaned	Total	Year Ago	% Change
Cargo - Tonnes					
Mail:					
Domestic	177	1	179	265	- 32.7
International	0	3	3	0	100.0
Transborder	0	0	0	0	0.0
Total - Mail:	177	5	182	265	- 31.5
Freight + Express:					
Domestic	1,278	696	1,974	1,328	48.6
International	3	0	3	0	100.0
Transborder	0	0	0	1	- 42.4
Total - Freight + Express:	1,281	696	1,978	1,329	48.8
Mail Plus Freight + Express:					
Domestic	1,455	697	2,152	1,593	35.1
International	3	3	6	0	100.0
Transborder	0	0	0	1	- 42.4
Grand Total - Cargo	1,458	701	2,159	1,594	35.4

NOTE: Figures may not sum to total due to rounding.

Metropolitan Washington Airports Authority
Ronald Reagan Washington National Airport
Monthly Air Traffic Summary Report
October 2014 - September 2015

Description	Enplaned	Deplaned	Total	Year Ago	% Change
Aircraft Operations					
Commercial:					
Air Carrier:					
Domestic			146,902	120,156	22.3
International			960	536	79.1
Transborder			0	0	0.0
Total - Air Carrier			147,862	120,692	22.5
Regional:					
Domestic			130,467	146,355	- 10.9
International			110	241	- 54.4
Transborder			7,049	8,242	- 14.5
Total - Regional			137,626	154,838	- 11.1
Commercial:					
Domestic			277,369	266,511	4.1
Transborder			8,119	9,019	- 10.0
Total - Commercial			285,488	275,530	3.6
Non-Commercial:					
General Aviation			3,163	4,165	- 24.1
Military			3,372	2,598	29.8
Total - Non-Commercial			6,535	6,763	- 3.4
Grand Total - Aircraft Operations			292,023	282,293	3.4
Passengers					
Commercial:					
Air Carrier Domestic:					
Scheduled	8,027,770	7,897,092	15,924,862	13,357,701	19.2
Chartered	145	145	290	0	100.0
Total - Domestic Air Carrier	8,027,915	7,897,237	15,925,152	13,357,701	19.2
Air Carrier International:					
Scheduled	35,940	37,256	73,196	47,072	55.5
Chartered	0	0	0	0	0.0
Total - International Air Carrier	35,940	37,256	73,196	47,072	55.5
Air Carrier Transborder:					
Scheduled	0	0	0	0	0.0
Chartered	0	0	0	0	0.0
Total - Transborder Air Carrier	0	0	0	0	0.0
Total - Air Carrier	8,063,855	7,934,493	15,998,348	13,404,773	19.3
Regional:					
Domestic	3,079,074	3,093,989	6,173,063	6,646,777	- 7.1
International	2,982	3,121	6,103	13,718	- 55.5
Transborder	157,875	156,914	314,789	335,853	- 6.3
Total - Regional	3,239,931	3,254,024	6,493,955	6,996,348	- 7.2
Commercial:					
Domestic	11,106,989	10,991,226	22,098,215	20,004,478	10.5
Transborder	196,797	197,291	394,088	396,643	- 0.6
Total - Commercial	11,303,786	11,188,517	22,492,303	20,401,121	10.3
Non-Commercial:					
General Aviation	10,520	10,272	20,792	16,874	23.2
Military	3,516	3,449	6,965	6,929	0.5
Total - Non-Commercial	14,036	13,721	27,757	23,803	16.6
Grand Total - Passengers	11,317,822	11,202,238	22,520,060	20,424,924	10.3

Metropolitan Washington Airports Authority
Ronald Reagan Washington National Airport
Monthly Air Traffic Summary Report
October 2014 - September 2015

Description	Enplaned	Deplaned	Total	Year Ago	% Change
Cargo - Tonnes					
Mail:					
Domestic	249	2	252	307	- 18.1
International	0	3	3	0	100.0
Transborder	0	0	0	0	0.0
Total - Mail:	249	5	255	307	- 17.1
Freight + Express:					
Domestic	1,563	865	2,428	1,693	43.4
International	3	0	3	0	100.0
Transborder	1	0	1	1	- 60.7
Total - Freight + Express:	1,566	865	2,431	1,695	43.5
Mail Plus Freight + Express:					
Domestic	1,812	867	2,679	2,000	33.9
International	3	3	6	0	100.0
Transborder	1	0	1	1	- 60.7
Grand Total - Cargo	1,815	871	2,686	2,002	34.2

NOTE: Figures may not sum to total due to rounding.

Metropolitan Washington Airports Authority
Washington Dulles International Airport
Monthly Air Traffic Summary Report
September 2015

Description	Enplaned	Deplaned	Total	Year Ago	% Change
Aircraft Operations					
Commercial:					
Air Carrier:					
Domestic			6,698	6,036	11.0
International			2,967	2,921	1.6
Transborder			0	0	0.0
Total - Air Carrier			9,665	8,957	7.9
Regional:					
Domestic			9,763	11,726	- 16.7
International			154	16	862.5
Transborder			179	360	- 50.3
Total - Regional			10,096	12,102	- 16.6
Commercial:					
Domestic			16,461	17,762	- 7.3
International			3,300	3,297	0.1
Total - Commercial			19,761	21,059	- 6.2
Non-Commercial:					
General Aviation			3,498	3,716	- 5.9
Military			72	32	125.0
Total - Non-Commercial			3,570	3,748	- 4.7
Grand Total - Aircraft Operations			23,331	24,807	- 5.9
Passengers					
Commercial:					
Air Carrier Domestic:					
Scheduled	378,648	386,770	765,418	729,703	4.9
Chartered	1,078	1,016	2,094	2,555	- 18.0
Total - Domestic Air Carrier	379,726	387,786	767,512	732,258	4.8
Air Carrier International:					
Scheduled	284,061	294,875	578,936	570,450	1.5
Chartered	464	509	973	990	- 1.7
Total - International Air Carrier	284,525	295,384	579,909	571,440	1.5
Air Carrier Transborder:					
Scheduled	0	0	0	0	0.0
Chartered	0	0	0	0	0.0
Total - Transborder Air Carrier	0	0	0	0	0.0
Total - Air Carrier	664,251	683,170	1,347,421	1,303,698	3.4
Regional:					
Domestic	243,500	243,638	487,138	467,943	4.1
International	3,551	3,155	6,706	2,294	192.3
Transborder	3,886	3,536	7,422	29,452	- 74.8
Total - Regional	250,937	250,329	501,266	499,689	0.3
Commercial:					
Domestic	623,226	631,424	1,254,650	1,200,201	4.5
International	291,962	302,075	594,037	603,186	- 1.5
Total - Commercial	915,188	933,499	1,848,687	1,803,387	2.5
Non-Commercial:					
General Aviation	6,564	6,801	13,365	13,997	- 4.5
Military	4	4	8	66	- 87.9
Total - Non-Commercial	6,568	6,805	13,373	14,063	- 4.9
Grand Total - Passengers	921,756	940,304	1,862,060	1,817,450	2.5

Metropolitan Washington Airports Authority
Washington Dulles International Airport
Monthly Air Traffic Summary Report
September 2015

Description	Enplaned	Deplaned	Total	Year Ago	% Change
Cargo - Tonnes					
Mail:					
Domestic	475	423	898	515	74.5
International	121	151	272	176	54.1
Total - Mail:	597	573	1,170	691	69.3
Freight + Express:					
Domestic	4,143	3,500	7,643	6,650	14.9
International	4,787	8,571	13,358	14,115	- 5.4
Total - Freight + Express:	8,930	12,070	21,001	20,765	1.1
Mail Plus Freight + Express:					
Domestic	4,618	3,923	8,541	7,165	19.2
International	4,909	8,721	13,630	14,291	- 4.6
Transborder	0	0	0	0	0.0
Grand Total - Cargo	9,527	12,644	22,170	21,456	3.3

NOTE: Figures may not sum to total due to rounding.

Metropolitan Washington Airports Authority
Washington Dulles International Airport
Monthly Air Traffic Summary Report
January 2015 - September 2015

Description	Enplaned	Deplaned	Total	Year Ago	% Change
Aircraft Operations					
Commercial:					
Air Carrier:					
Domestic			58,919	51,302	14.8
International			27,051	27,430	- 1.4
Transborder			0	0	0.0
Total - Air Carrier			85,970	78,732	9.2
Regional:					
Domestic			84,506	102,001	- 17.2
International			1,950	359	443.2
Transborder			1,688	6,631	- 74.5
Total - Regional			88,144	108,991	- 19.1
Commercial:					
Domestic			143,425	153,303	- 6.4
International			30,689	34,420	- 10.8
Total - Commercial			174,114	187,723	- 7.2
Non-Commercial:					
General Aviation			27,650	29,416	- 6.0
Military			377	425	- 11.3
Total - Non-Commercial			28,027	29,841	- 6.1
Grand Total - Aircraft Operations			202,141	217,564	- 7.1
Passengers					
Commercial:					
Air Carrier Domestic:					
Scheduled	3,412,327	3,464,072	6,876,399	6,478,602	6.1
Chartered	4,452	3,490	7,942	10,563	- 24.8
Total - Domestic Air Carrier	3,416,779	3,467,562	6,884,341	6,489,165	6.1
Air Carrier International:					
Scheduled	2,547,602	2,633,316	5,180,918	5,171,876	0.2
Chartered	5,234	5,109	10,343	7,730	33.8
Total - International Air Carrier	2,552,836	2,638,425	5,191,261	5,179,606	0.2
Air Carrier Transborder:					
Scheduled	0	0	0	0	0.0
Chartered	0	64	64	0	100.0
Total - Transborder Air Carrier	0	64	64	0	100.0
Total - Air Carrier	5,969,615	6,106,051	12,075,666	11,668,771	3.5
Regional:					
Domestic	2,026,252	2,013,234	4,039,486	4,201,930	- 3.9
International	40,154	43,867	84,021	23,567	256.5
Transborder	37,336	35,790	73,126	310,441	- 76.4
Total - Regional	2,103,742	2,092,891	4,196,633	4,535,938	- 7.5
Commercial:					
Domestic	5,443,031	5,480,796	10,923,827	10,691,095	2.2
International	2,630,326	2,718,146	5,348,472	5,513,614	- 3.0
Total - Commercial	8,073,357	8,198,942	16,272,299	16,204,709	0.4
Non-Commercial:					
General Aviation	54,961	55,112	110,073	111,731	- 1.5
Military	402	378	780	394	98.0
Total - Non-Commercial	55,363	55,490	110,853	112,125	- 1.1
Grand Total - Passengers	8,128,720	8,254,432	16,383,152	16,316,834	0.4

Metropolitan Washington Airports Authority
Washington Dulles International Airport
Monthly Air Traffic Summary Report
January 2015 - September 2015

Description	Enplaned	Deplaned	Total	Year Ago	% Change
Cargo - Tonnes					
Mail:					
Domestic	3,654	3,429	7,082	5,039	40.6
International	1,198	1,426	2,624	2,314	13.4
Total - Mail:	4,852	4,854	9,706	7,353	32.0
Freight + Express:					
Domestic	33,532	28,242	61,774	60,349	2.4
International	45,821	79,114	124,935	129,976	- 3.9
Total - Freight + Express:	79,353	107,356	186,709	190,325	- 1.9
Mail Plus Freight + Express:					
Domestic	37,185	31,671	68,856	65,387	5.3
International	47,019	80,540	127,559	132,291	- 3.6
Transborder	0	0	0	0	0.0
Grand Total - Cargo	84,205	112,211	196,415	197,678	- 0.6

NOTE: Figures may not sum to total due to rounding.

Metropolitan Washington Airports Authority
Washington Dulles International Airport
Monthly Air Traffic Summary Report
October 2014 - September 2015

Description	Enplaned	Deplaned	Total	Year Ago	% Change
Aircraft Operations					
Commercial:					
Air Carrier:					
Domestic			78,796	69,620	13.2
International			35,517	35,996	- 1.3
Transborder			0	0	0.0
Total - Air Carrier			114,313	105,616	8.2
Regional:					
Domestic			116,503	137,853	- 15.5
International			1,950	462	322.1
Transborder			3,019	9,241	- 67.3
Total - Regional			121,472	147,556	- 17.7
Commercial:					
Domestic			195,299	207,473	- 5.9
International			40,486	45,699	- 11.4
Total - Commercial			235,785	253,172	- 6.9
Non-Commercial:					
General Aviation			37,199	39,984	- 7.0
Military			492	635	- 22.5
Total - Non-Commercial			37,691	40,619	- 7.2
Grand Total - Aircraft Operations			273,476	293,791	- 6.9
Passengers					
Commercial:					
Air Carrier Domestic:					
Scheduled	4,512,851	4,564,928	9,077,779	8,634,493	5.1
Chartered	6,087	4,658	10,745	14,506	- 25.9
Total - Domestic Air Carrier	4,518,938	4,569,586	9,088,524	8,648,999	5.1
Air Carrier International:					
Scheduled	3,328,567	3,379,415	6,707,982	6,686,146	0.3
Chartered	6,575	6,681	13,256	10,560	25.5
Total - International Air Carrier	3,335,142	3,386,096	6,721,238	6,696,706	0.4
Air Carrier Transborder:					
Scheduled	0	0	0	0	0.0
Chartered	0	64	64	189	- 66.1
Total - Transborder Air Carrier	0	64	64	189	- 66.1
Total - Air Carrier	7,854,080	7,955,746	15,809,826	15,345,894	3.0
Regional:					
Domestic	2,743,786	2,725,840	5,469,626	5,645,691	- 3.1
International	40,154	43,867	84,021	28,343	196.4
Transborder	61,409	63,093	124,502	417,294	- 70.2
Total - Regional	2,845,349	2,832,800	5,678,149	6,091,328	- 6.8
Commercial:					
Domestic	7,262,724	7,295,426	14,558,150	14,294,690	1.8
International	3,436,705	3,493,120	6,929,825	7,142,532	- 3.0
Total - Commercial	10,699,429	10,788,546	21,487,975	21,437,222	0.2
Non-Commercial:					
General Aviation	75,486	74,113	149,599	150,401	- 0.5
Military	526	451	977	644	51.7
Total - Non-Commercial	76,012	74,564	150,576	151,045	- 0.3
Grand Total - Passengers	10,775,441	10,863,110	21,638,551	21,588,267	0.2

Metropolitan Washington Airports Authority
Washington Dulles International Airport
Monthly Air Traffic Summary Report
October 2014 - September 2015

Description	Enplaned	Deplaned	Total	Year Ago	% Change
Cargo - Tonnes					
Mail:					
Domestic	4,498	4,708	9,206	7,116	29.4
International	2,338	2,206	4,543	7,172	- 36.7
Total - Mail:	6,835	6,914	13,749	14,288	- 3.8
Freight + Express:					
Domestic	45,228	38,168	83,396	80,643	3.4
International	60,700	108,646	169,346	170,036	- 0.4
Total - Freight + Express:	105,928	146,814	252,742	250,679	0.8
Mail Plus Freight + Express:					
Domestic	49,726	42,876	92,602	87,759	5.5
International	63,037	110,852	173,889	177,208	- 1.9
Transborder	0	0	0	0	0.0
Grand Total - Cargo	112,764	153,728	266,491	264,967	0.6

NOTE: Figures may not sum to total due to rounding.