

# Aviation Enterprise January 2021 Financial Report

Prepared by the Office of Finance  
March 2021



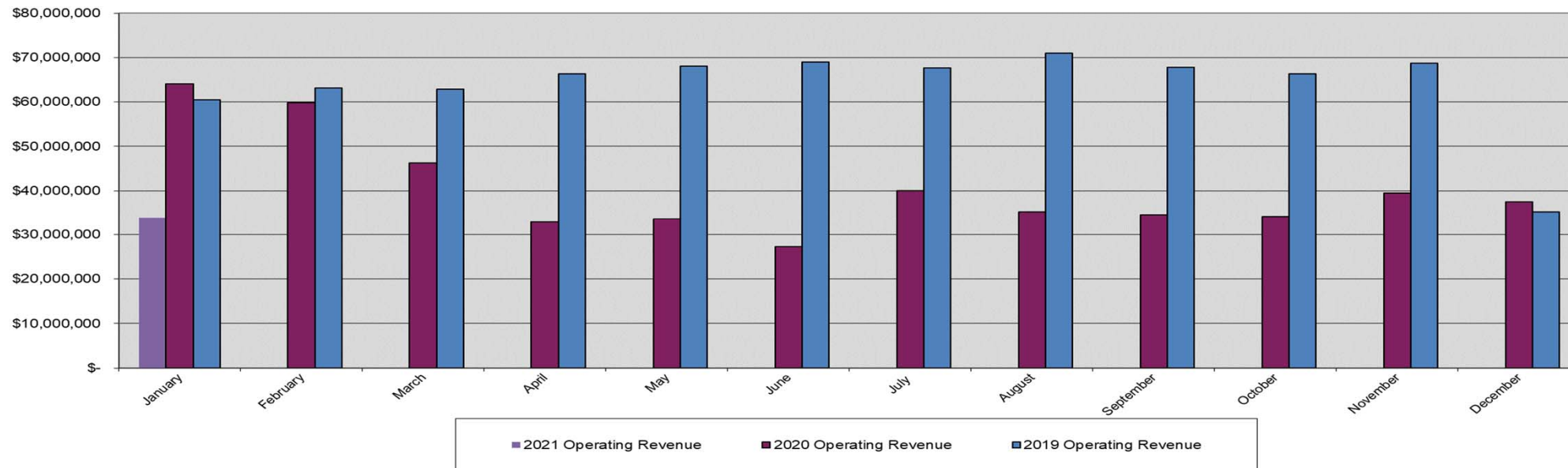
# Aviation Enterprise

## January 2021 Financial Report

### Total Revenue

- \$33.9 Million Year-to-Date
- 47.1% Lower Than Prior Year
- 2.6% Above Budget Year-to-Date <sup>(1)</sup>

(1) Monthly Revenue Budget Estimates are seasonalized.





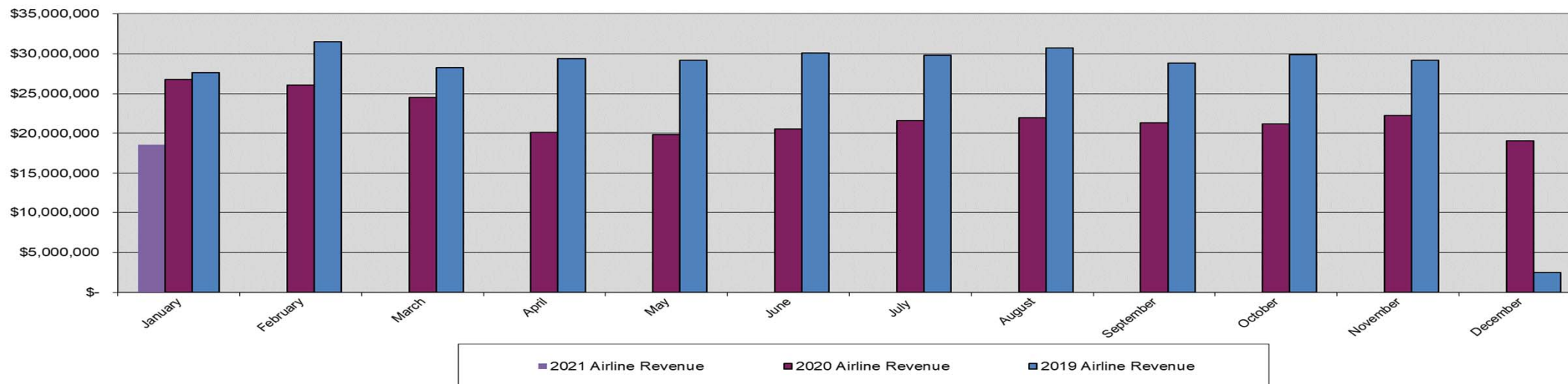
# Aviation Enterprise

## January 2021 Financial Report

### Airline Revenue

- \$18.6 Million Year-to-Date
- 30.6% Lower Than Prior Year
- 5.6% Above Budget Year-to-Date <sup>(1)</sup>

(1) Monthly Revenue Budget Estimates are seasonalized.





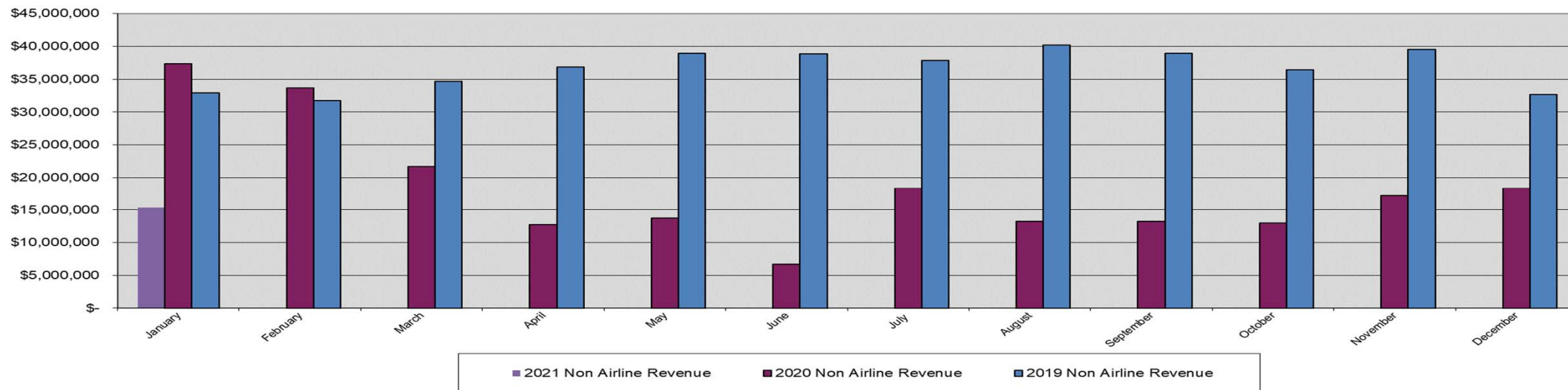
# Aviation Enterprise

## January 2021 Financial Report

### Non-Airline Revenue

- \$15.3 Million Year-to-Date
- 58.9% Lower Than Prior Year
- 0.7% Under Budget Year-to-Date <sup>(1)</sup>

(1) Monthly Revenue Budget Estimates are seasonalized.





# Aviation Enterprise January 2021 Financial Report

## O&M Expenses

- \$30.4 Million Year-to-Date
- 16.5% Lower Than Prior Year
- 14.6% Under Budget Year-to-Date<sup>(1)</sup>

(1) Monthly Expense Budget Estimates are seasonalized.





METROPOLITAN  
WASHINGTON  
AIRPORTS AUTHORITY

MWAA.COM



@Reagan\_Airport

@Dulles\_Airport

@Dulles\_Toll\_Road



reaganairport

FlyDulles

dullestollroad



**METROPOLITAN WASHINGTON AIRPORTS AUTHORITY  
AVIATION ENTERPRISE FUND - FINANCIAL REPORT  
JANUARY 2021**

**Table of Contents**

Highlights

- Aviation Enterprise Highlights
- Aviation Analysis of Financial Indicators

Aviation Enterprise Comparative Income Statement

Income Statements by Program

- Aviation Enterprise Income Statement: Month-to-Date
- Aviation Enterprise Income Statement: Year-to-Date

Comparative Analysis of Operating Revenues & Expenses

- Comparative Income Statement - Operations & Maintenance (O&M)
- Comparative Income Statement - Administration (CF)
- Comparative Income Statement - Ronald Reagan National Airport (DCA)
- Comparative Income Statement - Washington Dulles International Airport (IAD)
- Comparative Income Statement - Public Safety (PSD)

Other Comparative Analysis of Revenues & Expenses

- Comparative Income Statement - Parking
- Comparative Income Statement - Telecommunications
- Comparative Income Statement - FAA Air Traffic Control Tower
- Comparative Income Statement - 45025 Aviation Drive
- Comparative Income Statement - 45045 Aviation Drive
- Comparative Income Statement - 44965 Aviation Drive

Operations and Maintenance Programs

- O&M Month/Year/Budget Statement

**Metropolitan Washington Airports Authority**  
**Financial Statements**  
**January 2021**  
**Aviation Enterprise Fund – Highlights in Brief**

- ➔ Total operating revenues for the Aviation Enterprise Fund for January 2021 were \$33.9 million. Operating revenues decreased from December 2020 by \$3.5 million mostly due to decreases in concessions of \$3.7 million and landing fees of \$1.8 million offset by increases in rents of \$0.8 million, passenger conveyance fees of \$0.6 million, utility sales of \$0.4 million, international arrival fees of \$0.1 million and other revenues of \$0.1 million.
- ➔ Operating revenues of \$33.9 million through January 2021 were a decrease of \$30.2 million from 2020 totals primarily due to decreases in concessions of \$22.2 million, landing fees of \$5.3 million, rents of \$1.2 million, international arrival fees of \$1.0 million, other revenues of \$0.4 million and passenger conveyance fees of \$0.4 million offset by an increase in utility sales of \$0.2 million.
- ➔ Total operating expenses for the Aviation Enterprise Fund during the month of January 2021 were \$49.5 million, which is \$9.4 million higher than December 2020 mostly due to increases in salaries and related benefits of \$18.8 million and project expenses of \$0.1 million offset by decreases in services of \$5.2 million, depreciation and amortization of \$2.2 million, materials and supplies of \$0.9 million, insurance of \$0.6 million and telecommunications of \$0.5 million.
- ➔ Operating expenses of \$49.5 million in January 2021 were \$6.8 million lower than 2020 primarily due to decreases in salaries and related benefits of \$3.0 million, services of \$2.4 million, materials and supplies of \$0.7 million, utilities of \$0.5 million, depreciation and amortization of \$0.1 million, insurance of \$0.1 million and project expenses of \$0.1 million offset by an increase in telecommunications of \$0.1 million.
- ➔ Operating loss for the Aviation Enterprise Fund in January 2021 was \$15.5 million compared to operating loss of \$2.6 million in December 2020. Operating income in January 2020 was \$7.9 million.
- ➔ In January 2021 there were net non-operating revenues of \$24.3 million compared to net non-operating revenues in December 2020 of \$71.2 million resulting in a change of \$46.9 million primarily due to decreases in federal, state and local grants of \$74.6 million and investment gain of \$4.1 million offset by increases in net contributions from other governments of \$27.1 million and fair value gain on swaps of \$4.7 million. Net non-operating expenses in January 2020 were \$26.8 million.
- ➔ The net capital contributions for the Aviation Enterprise Fund for the month of January 2021 were \$2.4 million compared to \$2.2 million in December 2020. The \$0.2 million increase is due to an increase in passenger facility charges of \$0.2 million. Net capital contributions in January 2020 were \$10.6 million.
- ➔ There is an increase in net position for the Aviation Enterprise Fund for the month of January 2021 of \$11.2 million compared to an increase of \$70.8 million for the prior month. Net position in January 2020 was a decrease of \$8.3 million.



**METROPOLITAN WASHINGTON AIRPORTS AUTHORITY  
AVIATION ENTERPRISE FUND  
FINANCIAL INDICATORS  
JANUARY 2021**

**Actuals vs Budget**

	Actuals		Percent Change CY to PY	Seasonalized Budget	Percent Change CY to Seasonalized Budget	Actual YTD Compared to Prior YTD	Actual YTD Compared to Seasonalized Budget
	Current Year-to-Date	Prior Year-to-Date					
Airline rents	\$ 15,980,635	\$ 17,548,792	(8.9%)	\$ 15,640,537	2.2%	▼	▲
Landing fees	2,135,457	7,437,662	(71.3%)	1,761,351	21.2%	▼	▲
International arrival fees	373,427	1,334,235	(72.0%)	103,223	261.8%	▼	▲
Pass conveyance fees (mobile lounge)	108,242	461,144	(76.5%)	108,242	(0.0%)	▼	—
<b>Total Airline Revenue</b>	<b>\$ 18,597,761</b>	<b>\$ 26,781,832</b>	<b>(30.6%)</b>	<b>\$ 17,613,354</b>	<b>5.6%</b>	<b>▼</b>	<b>▲</b>
Security fees (TSA)	79,360	79,360	0.0%	79,360	0.0%	—	—
Utility sales	1,369,846	1,217,086	12.6%	1,233,173	11.1%	▲	▲
Parking permits and miscellaneous	628,967	998,982	(37.0%)	782,622	(19.6%)	▼	▼
Non-airlines rents	4,547,174	4,156,023	9.4%	4,292,403	5.9%	▲	▲
Food and beverage	352,126	3,053,298	(88.5%)	380,111	(7.4%)	▼	▼
Retail and newsstand	126,811	1,181,350	(89.3%)	93,303	35.9%	▼	▲
Hotel and gas station	70,553	249,173	(71.7%)	112,298	(37.2%)	▼	▼
Duty free	128,209	1,263,524	(89.9%)	39,774	222.3%	▼	▲
Other concessions	220,886	358,151	(38.3%)	220,733	0.1%	▼	—
WiFi	5,396	3,746	44.0%	4,167	29.5%	▲	▲
Advertising	500,000	1,283,235	(61.0%)	1,147,916	(56.4%)	▼	▼
Foreign currency	4,881	333,333	(98.5%)	3,660	33.4%	▼	▲
Ground transportation	647,528	4,554,314	(85.8%)	904,872	(28.4%)	▼	▼
Hotel shuttle	24,889	76,999	(67.7%)	23,430	6.2%	▼	▲
Rental cars <sup>3</sup>	1,128,649	4,087,059	(72.4%)	1,212,329	(6.9%)	▼	▼
In flight kitchen	435,917	1,968,638	(77.9%)	585,089	(25.5%)	▼	▼
Parking	2,355,458	9,670,743	(75.6%)	1,626,226	44.8%	▼	▲
FBO	2,681,271	2,751,161	(2.5%)	2,666,714	0.5%	▼	—
Miscellaneous	40,423	63,164	(36.0%)	49,638	(18.6%)	▼	▼
<b>Total Non-Airline Revenue</b>	<b>\$ 15,348,343</b>	<b>\$ 37,349,340</b>	<b>(58.9%)</b>	<b>\$ 15,457,817</b>	<b>(0.7%)</b>	<b>▼</b>	<b>—</b>
<b>Total Revenues</b>	<b>\$ 33,946,104</b>	<b>\$ 64,131,172</b>	<b>(47.1%)</b>	<b>\$ 33,071,170</b>	<b>2.6%</b>	<b>▼</b>	<b>▲</b>
Personnel compensation <sup>1</sup>	\$ 12,791,723	\$ 13,984,279	(8.5%)	\$ 12,802,223	(0.1%)	▼	—
Employee Benefits <sup>1</sup>	3,224,299	5,000,812	(35.5%)	4,411,041	(26.9%)	▼	▼
Services <sup>1</sup>	9,386,138	11,290,497	(16.9%)	11,696,618	(19.8%)	▼	▼
Materials and supplies <sup>1</sup>	1,252,221	1,913,989	(34.6%)	2,310,188	(45.8%)	▼	▼
Lease from U.S. Government <sup>1</sup>	499,000	493,750	1.1%	509,879	(2.1%)	▲	▼
Lease and rental expenses <sup>1</sup>	403,472	355,868	13.4%	440,655	(8.4%)	▲	▼
Utilities <sup>1</sup>	1,965,452	2,495,480	(21.2%)	2,435,809	(19.3%)	▼	▼
Telecommunications <sup>1</sup>	271,547	207,070	31.1%	287,638	(5.6%)	▲	▼
Travel <sup>1</sup>	650	25,180	(97.4%)	3,734	(82.6%)	▼	▼
Insurance <sup>1</sup>	561,484	595,272	(5.7%)	649,964	(13.6%)	▼	▼
Project expenses <sup>1</sup>	-	6,003	(100.0%)	-	N/A	▼	N/A
Non-cash expenses (gains) <sup>1</sup>	-	-	N/A	-	N/A	N/A	N/A
<b>Expenses</b>	<b>30,355,987</b>	<b>36,368,202</b>	<b>(16.5%)</b>	<b>35,547,749</b>	<b>(14.6%)</b>	<b>▼</b>	<b>▼</b>
<b>Operating Income (Loss) before Deprec. &amp; Non-Airport Expenses</b>	<b>3,590,116</b>	<b>27,762,970</b>	<b>(87.1%)</b>	<b>(2,476,579)</b>	<b>(245.0%)</b>	<b>▼</b>	<b>▼</b>
Depreciation and amortization	18,420,655	18,494,618	(0.4%)		N/A	—	N/A
Non-Operating Budget Expenses	718,776	1,384,743	(48.1%)		N/A	▼	N/A
<b>Total Expenses</b>	<b>\$ 49,495,419</b>	<b>\$ 56,247,563</b>	<b>(12.0%)</b>		N/A	▼	N/A
<b>Operating Income (Loss)</b>	<b>\$ (15,549,315)</b>	<b>\$ 7,883,609</b>	<b>(297.2%)</b>		N/A	▼	N/A

**Additional Aviation Enterprise Fund Information**

	2021	2020	Percent Change	Seasonalized Budget	Percent Change CY to Seasonalized Budget	Actual YTD Compared to Prior YTD	Actual YTD Compared to Seasonalized Budget
Passenger Activity - IAD (rolling 12 months of activity) <sup>2</sup>	8,333,460	24,817,677	(66.4%)		N/A	▼	N/A
Cargo Tonnes - DCA (rolling 12 months of activity) <sup>2</sup>	1,326	2,178	(39.1%)		N/A	▼	N/A
Cargo Tonnes - IAD (rolling 12 months of activity) <sup>2</sup>	197,917	273,385	(27.6%)		N/A	▼	N/A
Investment Income (Loss) (Year-to-Date) <sup>4</sup>	\$ 328,339	\$ 5,108,520	(93.6%)		N/A	▼	N/A
Principal Payments	\$ 15,922,083	\$ 15,415,833	3.3%		N/A	▲	N/A
Interest Expense (Year-to-Date)	\$ 12,244,197	\$ 13,932,157	(12.1%)		N/A	▼	N/A
PFC (Year-to-Date)	\$ 1,630,799	\$ 8,893,826	(81.7%)	\$ 1,800,000	(9.4%)	▼	▼

1. Excludes COMIP and Bond Fund expenses.

2. The reporting period for the rolling 12 months of activity lags the current month being reported by one month. Prior year amounts are for a comparable period.

3. Rental car revenues include customer contract fees.

4. Includes unrealized investment gains and losses.

MWAA AVI - Monthly Comparative Income Statement

Period: 2021 - January

Income Statement	Current Month	Prior Month	Variance	Current Month (Prior Year)	Variance	Year-to-Date	Year-to-Date (Prior Year)	Variance
<b>OPERATING REVENUES</b>								
Concessions	\$8,722,997	\$12,377,857	(\$3,654,860)	\$30,897,890	(\$22,174,894)	\$8,722,997	\$30,897,890	(\$22,174,894)
Rents	20,527,809	19,730,055	797,754	21,704,814	(1,177,006)	20,527,809	21,704,814	(1,177,006)
Landing Fees	2,135,457	3,895,274	(1,759,817)	7,437,662	(5,302,205)	2,135,457	7,437,662	(5,302,205)
Utility Sales	1,369,846	1,005,631	364,214	1,217,086	152,760	1,369,846	1,217,086	152,760
International Arrival Fees	373,427	273,258	100,169	1,334,235	(960,808)	373,427	1,334,235	(960,808)
Passenger Conveyance Fees	108,242	(481,837)	590,079	461,144	(352,901)	108,242	461,144	(352,901)
Security Fees	79,360	79,360	0	79,360	0	79,360	79,360	0
Other	628,967	557,538	71,429	998,982	(370,015)	628,967	998,982	(370,015)
<b>Total Operating Revenues</b>	<b>33,946,104</b>	<b>37,437,136</b>	<b>(3,491,032)</b>	<b>64,131,172</b>	<b>(30,185,068)</b>	<b>33,946,104</b>	<b>64,131,172</b>	<b>(30,185,068)</b>
<b>OPERATING EXPENSES</b>								
Salaries and Related Benefits	16,016,022	(2,772,065)	18,788,087	18,985,091	(2,969,070)	16,016,022	18,985,091	(2,969,070)
Services	9,963,328	15,146,076	(5,182,748)	12,391,695	(2,428,367)	9,963,328	12,391,695	(2,428,367)
Materials and Supplies	1,715,867	2,606,487	(890,620)	2,416,205	(700,338)	1,715,867	2,416,205	(700,338)
Lease from U.S. Government	499,000	499,000	0	493,750	5,250	499,000	493,750	5,250
Utilities	1,965,452	1,970,588	(5,136)	2,495,480	(530,028)	1,965,452	2,495,480	(530,028)
Telecommunications	295,212	767,841	(472,629)	213,413	81,799	295,212	213,413	81,799
Travel	650	6,912	(6,261)	25,180	(24,530)	650	25,180	(24,530)
Insurance	561,484	1,193,468	(631,984)	620,829	(59,344)	561,484	620,829	(59,344)
Project Expenses	57,748	5,990	51,758	111,302	(53,554)	57,748	111,302	(53,554)
Non-Cash Expenses (Gains)	0	0	0	0	0	0	0	0
Depreciation and Amortization	18,420,655	20,625,108	(2,204,453)	18,494,618	(73,963)	18,420,655	18,494,618	(73,963)
<b>Total Operating Expenses</b>	<b>49,495,419</b>	<b>40,049,406</b>	<b>9,446,013</b>	<b>56,247,563</b>	<b>(6,752,144)</b>	<b>49,495,419</b>	<b>56,247,563</b>	<b>(6,752,144)</b>
<b>OPERATING INCOME</b>	<b>(15,549,315)</b>	<b>(2,612,270)</b>	<b>(12,937,046)</b>	<b>7,883,609</b>	<b>(23,432,925)</b>	<b>(15,549,315)</b>	<b>7,883,609</b>	<b>(23,432,925)</b>
<b>NON-OPERATING REVENUES (EXPENSES)</b>								
Investment Gain (Losses)	328,339	4,439,585	(4,111,246)	5,108,520	(4,780,181)	328,339	5,108,520	(4,780,181)
Interest Expense	(12,244,197)	(12,287,896)	43,700	(13,932,157)	1,687,960	(12,244,197)	(13,932,157)	1,687,960
Federal, State and Local Grants	56,555	74,702,342	(74,645,787)	30,252	26,303	56,555	30,252	26,303
Fair Value Gain (Loss) on Swaps	9,771,576	5,075,421	4,696,155	(17,038,053)	26,809,629	9,771,576	(17,038,053)	26,809,629
Net Contributions from (to) Other Governments	26,388,085	(706,596)	27,094,681	(944,593)	27,332,678	26,388,085	(944,593)	27,332,678
Other Gains (Loss)	0	0	0	0	0	0	0	0
<b>Total Non-Operating Revenues (Expenses)</b>	<b>24,300,358</b>	<b>71,222,855</b>	<b>(46,922,497)</b>	<b>(26,776,031)</b>	<b>51,076,389</b>	<b>24,300,358</b>	<b>(26,776,031)</b>	<b>51,076,389</b>
<b>GAIN (LOSS) BEFORE CAPITAL CONTRIBUTIONS</b>	<b>8,751,043</b>	<b>68,610,585</b>	<b>(59,859,543)</b>	<b>(18,892,421)</b>	<b>27,643,464</b>	<b>8,751,043</b>	<b>(18,892,421)</b>	<b>27,643,464</b>
<b>CAPITAL CONTRIBUTIONS</b>								
Passenger Facility Charges	1,630,799	1,417,917	212,881	8,893,826	(7,263,028)	1,630,799	8,893,826	(7,263,028)
Federal, State and Local Grants	780,567	745,146	35,422	1,713,736	(933,169)	780,567	1,713,736	(933,169)
<b>Total Capital Contributions</b>	<b>2,411,366</b>	<b>2,163,063</b>	<b>248,303</b>	<b>10,607,563</b>	<b>(8,196,197)</b>	<b>2,411,366</b>	<b>10,607,563</b>	<b>(8,196,197)</b>
<b>INCREASE (DECREASE) IN NET POSITION</b>	<b>\$11,162,409</b>	<b>\$70,773,648</b>	<b>(\$59,611,240)</b>	<b>(\$8,284,859)</b>	<b>\$19,447,267</b>	<b>\$11,162,409</b>	<b>(\$8,284,859)</b>	<b>\$19,447,267</b>

# MWAA AVI Income Statement by Fund

9:41 PM

3/11/2021

Page 1 of 1

Period: 2021 - January

Time Period: Current Period

	Aviation O & M Current Period	COMIP Current Period	CCP Current Period	Total Current Period
<b>OPERATING REVENUES</b>				
Concessions	\$8,722,997	\$0	\$0	\$8,722,997
Rents	20,527,809	0	0	20,527,809
Landing Fees	2,135,457	0	0	2,135,457
Utility Sales	1,369,846	0	0	1,369,846
International Arrival Fees	373,427	0	0	373,427
Passenger Conveyance Fees	108,242	0	0	108,242
Security Fees	79,360	0	0	79,360
Other	628,967	0	0	628,967
<b>Total Operating Revenue</b>	<b>33,946,104</b>	<b>0</b>	<b>0</b>	<b>33,946,104</b>
<b>OPERATING EXPENSES</b>				
Salaries and Related Benefits	16,016,022	0	0	16,016,022
Services	9,386,138	191,365	385,825	9,963,328
Materials and Supplies	1,655,693	48,861	11,312	1,715,867
Lease from U.S. Government	499,000	0	0	499,000
Utilities	1,965,452	0	0	1,965,452
Telecommunications	271,547	0	23,665	295,212
Travel	650	0	0	650
Insurance	561,484	0	0	561,484
Project Expenses	0	0	57,748	57,748
Non-Cash Expenses (Gains)	0	0	0	0
Depreciation and Amortization	395,273	1,410,604	16,614,778	18,420,655
<b>Total Operating Expenses</b>	<b>30,751,260</b>	<b>1,650,831</b>	<b>17,093,328</b>	<b>49,495,419</b>
<b>OPERATING INCOME</b>	<b>3,194,843</b>	<b>(1,650,831)</b>	<b>(17,093,328)</b>	<b>(15,549,315)</b>
<b>NON-OPERATING REVENUES (EXPENSES)</b>				
Investment Income	(239,613)	0	567,952	328,339
Interest Expense	(12,226)	0	(12,231,971)	(12,244,197)
Federal, State and Local Grants	56,555	0	0	56,555
Fair Value Gain (Loss) on Swaps	0	0	9,771,576	9,771,576
Net Contributions from (to) Other Governments	27,500,000	0	(1,111,915)	26,388,085
Other Gains (Loss)	0	0	0	0
<b>Total Non-Operating Revenues (Expenses)</b>	<b>27,304,716</b>	<b>0</b>	<b>(3,004,358)</b>	<b>24,300,358</b>
<b>GAIN (LOSS) BEFORE CAPITAL CONTRIBUTIONS</b>	<b>30,499,560</b>	<b>(1,650,831)</b>	<b>(20,097,686)</b>	<b>8,751,043</b>
<b>CAPITAL CONTRIBUTIONS</b>				
Passenger Facility Charges	0	0	1,630,799	1,630,799
Federal, State and Local Grants	0	0	780,567	780,567
<b>Total Capital Contributions</b>	<b>0</b>	<b>0</b>	<b>2,411,366</b>	<b>2,411,366</b>
<b>INCREASE (DECREASE) IN NET POSITION</b>	<b>\$30,499,560</b>	<b>(\$1,650,831)</b>	<b>(\$17,686,321)</b>	<b>\$11,162,409</b>

# MWA AVI Income Statement by Fund

9:42 PM  
3/11/2021  
Page 1 of 1

Period: 2021 - January  
Time Period: Current Period YTD

	Aviation O & M Current Period YTD	COMIP Current Period YTD	CCP Current Period YTD	Total Current Period YTD
<b>OPERATING REVENUES</b>				
Concessions	\$8,722,997	\$0	\$0	\$8,722,997
Rents	20,527,809	0	0	20,527,809
Landing Fees	2,135,457	0	0	2,135,457
Utility Sales	1,369,846	0	0	1,369,846
International Arrival Fees	373,427	0	0	373,427
Passenger Conveyance Fees	108,242	0	0	108,242
Security Fees	79,360	0	0	79,360
Other	628,967	0	0	628,967
<b>Total Operating Revenue</b>	<b>33,946,104</b>	<b>0</b>	<b>0</b>	<b>33,946,104</b>
<b>OPERATING EXPENSES</b>				
Salaries and Related Benefits	16,016,022	0	0	16,016,022
Services	9,386,138	191,365	385,825	9,963,328
Materials and Supplies	1,655,693	48,861	11,312	1,715,867
Lease from U.S. Government	499,000	0	0	499,000
Utilities	1,965,452	0	0	1,965,452
Telecommunications	271,547	0	23,665	295,212
Travel	650	0	0	650
Insurance	561,484	0	0	561,484
Project Expenses	0	0	57,748	57,748
Non-Cash Expenses (Gains)	0	0	0	0
Depreciation and Amortization	395,273	1,410,604	16,614,778	18,420,655
<b>Total Operating Expenses</b>	<b>30,751,260</b>	<b>1,650,831</b>	<b>17,093,328</b>	<b>49,495,419</b>
<b>OPERATING INCOME</b>	<b>3,194,843</b>	<b>(1,650,831)</b>	<b>(17,093,328)</b>	<b>(15,549,315)</b>
<b>NON-OPERATING REVENUES (EXPENSES)</b>				
Investment Income	(239,613)	0	567,952	328,339
Interest Expense	(12,226)	0	(12,231,971)	(12,244,197)
Federal, State and Local Grants	56,555	0	0	56,555
Fair Value Gain (Loss) on Swaps	0	0	9,771,576	9,771,576
Net Contributions from (to) Other Governments	27,500,000	0	(1,111,915)	26,388,085
Other Gains (Loss)	0	0	0	0
<b>Total Non-Operating Revenues (Expenses)</b>	<b>27,304,716</b>	<b>0</b>	<b>(3,004,358)</b>	<b>24,300,358</b>
<b>GAIN (LOSS) BEFORE CAPITAL CONTRIBUTIONS</b>	<b>30,499,560</b>	<b>(1,650,831)</b>	<b>(20,097,686)</b>	<b>8,751,043</b>
<b>CAPITAL CONTRIBUTIONS</b>				
Passenger Facility Charges	0	0	1,630,799	1,630,799
Federal, State and Local Grants	0	0	780,567	780,567
<b>Total Capital Contributions</b>	<b>0</b>	<b>0</b>	<b>2,411,366</b>	<b>2,411,366</b>
<b>INCREASE (DECREASE) IN NET POSITION</b>	<b>\$30,499,560</b>	<b>(\$1,650,831)</b>	<b>(\$17,686,321)</b>	<b>\$11,162,409</b>

MWAA AVI - Comparative Income Statement O&M

Period: 2021 - January

Income Statement	Current Month	Prior Month	Variance	Current Month (Prior Year)	Variance	Year-to-Date	Year-to-Date (Prior Year)	Variance
<b>OPERATING REVENUES</b>								
Concessions	\$8,722,997	\$12,377,857	(\$3,654,860)	\$30,897,890	(\$22,174,894)	\$8,722,997	\$30,897,890	(\$22,174,894)
Rents	20,527,809	19,730,055	797,754	21,704,814	(1,177,006)	20,527,809	21,704,814	(1,177,006)
Landing Fees	2,135,457	3,895,274	(1,759,817)	7,437,662	(5,302,205)	2,135,457	7,437,662	(5,302,205)
Utility Sales	1,369,846	1,005,631	364,214	1,217,086	152,760	1,369,846	1,217,086	152,760
International Arrival Fees	373,427	273,258	100,169	1,334,235	(960,808)	373,427	1,334,235	(960,808)
Passenger Conveyance Fees	108,242	(481,837)	590,079	461,144	(352,901)	108,242	461,144	(352,901)
Security Fees	79,360	79,360	0	79,360	0	79,360	79,360	0
Other	628,967	557,538	71,429	998,982	(370,015)	628,967	998,982	(370,015)
<b>Total Operating Revenues</b>	<b>33,946,104</b>	<b>37,437,136</b>	<b>(3,491,032)</b>	<b>64,131,172</b>	<b>(30,185,068)</b>	<b>33,946,104</b>	<b>64,131,172</b>	<b>(30,185,068)</b>
<b>OPERATING EXPENSES</b>								
Salaries and Related Benefits	16,016,022	(2,772,065)	18,788,087	18,985,091	(2,969,070)	16,016,022	18,985,091	(2,969,070)
Services	9,386,138	11,350,872	(1,964,734)	11,290,497	(1,904,359)	9,386,138	11,290,497	(1,904,359)
Materials and Supplies	1,655,693	2,258,188	(602,495)	2,269,858	(614,165)	1,655,693	2,269,858	(614,165)
Lease from U.S. Government	499,000	499,000	0	493,750	5,250	499,000	493,750	5,250
Utilities	1,965,452	1,970,588	(5,136)	2,495,480	(530,028)	1,965,452	2,495,480	(530,028)
Telecommunications	271,547	651,324	(379,777)	207,070	64,477	271,547	207,070	64,477
Travel	650	6,912	(6,261)	25,180	(24,530)	650	25,180	(24,530)
Insurance	561,484	1,193,468	(631,984)	595,272	(33,788)	561,484	595,272	(33,788)
Project Expenses	0	21,373	(21,373)	6,003	(6,003)	0	6,003	(6,003)
Non-Cash Expenses (Gains)	0	0	0	0	0	0	0	0
Depreciation and Amortization	395,273	234,590	160,683	476,403	(81,130)	395,273	476,403	(81,130)
<b>Total Operating Expenses</b>	<b>30,751,260</b>	<b>15,414,251</b>	<b>15,337,009</b>	<b>36,844,605</b>	<b>(6,093,344)</b>	<b>30,751,260</b>	<b>36,844,605</b>	<b>(6,093,344)</b>
<b>OPERATING INCOME</b>	<b>3,194,843</b>	<b>22,022,885</b>	<b>(18,828,042)</b>	<b>27,286,568</b>	<b>(24,091,724)</b>	<b>3,194,843</b>	<b>27,286,568</b>	<b>(24,091,724)</b>
<b>NON-OPERATING REVENUES (EXPENSES)</b>								
Investment Gain (Losses)	(239,613)	3,851,916	(4,091,529)	2,594,719	(2,834,332)	(239,613)	2,594,719	(2,834,332)
Interest Expense	(12,226)	(7,875)	(4,350)	(10,546)	(1,680)	(12,226)	(10,546)	(1,680)
Federal, State and Local Grants	56,555	74,702,342	(74,645,787)	30,252	26,303	56,555	30,252	26,303
Fair Value Gain (Loss) on Swaps	0	0	0	0	0	0	0	0
Net Contributions from (to) Other Governments	27,500,000	0	27,500,000	0	27,500,000	27,500,000	0	27,500,000
Other Gain (Loss)	0	0	0	0	0	0	0	0
<b>Total Non-Operating Revenues (Expenses)</b>	<b>27,304,716</b>	<b>78,546,382</b>	<b>(51,241,666)</b>	<b>2,614,425</b>	<b>24,690,291</b>	<b>27,304,716</b>	<b>2,614,425</b>	<b>24,690,291</b>
<b>GAIN (LOSS) BEFORE CAPITAL CONTRIBUTIONS</b>	<b>30,499,560</b>	<b>100,569,267</b>	<b>(70,069,708)</b>	<b>29,900,992</b>	<b>598,567</b>	<b>30,499,560</b>	<b>29,900,992</b>	<b>598,567</b>
<b>CAPITAL CONTRIBUTIONS</b>								
Passenger Facility Charges	0	0	0	0	0	0	0	0
Federal, State and Local Grants	0	44,377	(44,377)	0	0	0	0	0
<b>Total Capital Contributions</b>	<b>0</b>	<b>44,377</b>	<b>(44,377)</b>	<b>0</b>	<b>0</b>	<b>0</b>	<b>0</b>	<b>0</b>
<b>INCREASE (DECREASE) IN NET POSITION</b>	<b>\$30,499,560</b>	<b>\$100,613,644</b>	<b>(\$70,114,085)</b>	<b>\$29,900,992</b>	<b>\$598,567</b>	<b>\$30,499,560</b>	<b>\$29,900,992</b>	<b>\$598,567</b>



MWAA Aviation Enterprise Comparative  
Income Statement - Administration (CF)

Period: 2021 - Jan

Income Statement	Current Month	Prior Month	Variance	Current Month (Prior Year)	Variance	Year-to-Date	Year-to-Date (Prior Year)	Variance
<b>OPERATING REVENUES</b>								
Other	10,264	28,004	(17,741)	53,356	(43,092)	10,264	53,356	(43,092)
Total Operating Revenue	10,264	28,004	(17,741)	53,356	(43,092)	10,264	53,356	(43,092)
<b>OPERATING EXPENSES</b>								
Salaries and Related Benefits	4,082,257	(15,894,375)	19,976,632	5,221,664	(1,139,407)	4,082,257	5,221,664	(1,139,407)
Services	771,489	1,421,041	(649,552)	1,145,785	(374,296)	771,489	1,145,785	(374,296)
Materials and Supplies	599,256	689,837	(90,580)	472,470	126,786	599,256	472,470	126,786
Lease from U.S. Government	499,000	499,000	0	493,750	5,250	499,000	493,750	5,250
Utilities	112	648	(536)	282	(170)	112	282	(170)
Telecommunications	271,547	650,511	(378,963)	207,070	64,477	271,547	207,070	64,477
Travel	(1,399)	8,648	(10,047)	20,373	(21,772)	(1,399)	20,373	(21,772)
Insurance	561,484	1,193,468	(631,984)	595,272	(33,788)	561,484	595,272	(33,788)
Project Expenses	0	0	0	0	0	0	0	0
Non-Cash Expenses (Gains)	0	0	0	0	0	0	0	0
Depreciation and Amortization	48,923	(109,132)	158,055	44,178	4,744	48,923	44,178	4,744
Total Operating Expenses	6,832,670	(11,540,354)	18,373,024	8,200,845	(1,368,175)	6,832,670	8,200,845	(1,368,175)
<b>OPERATING INCOME</b>	<b>(\$6,822,406)</b>	<b>\$11,568,359</b>	<b>(\$18,390,765)</b>	<b>(\$8,147,489)</b>	<b>\$1,325,083</b>	<b>(\$6,822,406)</b>	<b>(\$8,147,489)</b>	<b>\$1,325,083</b>

MWAAs Aviation Enterprise Comparative  
Income Statement - Ronald Reagan National  
Airport (DCA)

Period: 2021 - Jan

Income Statement	Current Month	Prior Month	Variance	Current Month (Prior Year)	Variance	Year-to-Date	Year-to-Date (Prior Year)	Variance
<b>OPERATING REVENUES</b>								
Concessions	\$1,810,585	\$4,529,449	(\$2,718,863)	\$12,626,248	(\$10,815,663)	\$1,810,585	\$12,626,248	(\$10,815,663)
Rents	7,939,256	7,349,352	589,904	7,337,314	601,942	7,939,256	7,337,314	601,942
Landing Fees	1,300,534	1,835,855	(535,322)	4,574,730	(3,274,197)	1,300,534	4,574,730	(3,274,197)
Utility Sales	387,850	318,004	69,846	358,300	29,550	387,850	358,300	29,550
International Arrival Fees	0	0	0	0	0	0	0	0
Passenger Conveyance Fees	0	0	0	0	0	0	0	0
Security Fees	49,600	49,600	0	49,600	0	49,600	49,600	0
Other	46,180	577,563	(531,383)	246,775	(200,595)	46,180	246,775	(200,595)
<b>Total Operating Revenue</b>	<b>11,534,006</b>	<b>14,659,823</b>	<b>(3,125,818)</b>	<b>25,192,968</b>	<b>(13,658,962)</b>	<b>11,534,006</b>	<b>25,192,968</b>	<b>(13,658,962)</b>
<b>OPERATING EXPENSES</b>								
Salaries and Related Benefits	2,934,189	2,803,871	130,318	3,190,085	(255,896)	2,934,189	3,190,085	(255,896)
Services	2,743,957	3,218,533	(474,577)	3,586,499	(842,542)	2,743,957	3,586,499	(842,542)
Materials and Supplies	467,438	397,820	69,618	353,119	114,319	467,438	353,119	114,319
Lease from U.S. Government	0	0	0	0	0	0	0	0
Utilities	666,692	613,335	53,357	851,351	(184,659)	666,692	851,351	(184,659)
Telecommunications	0	0	0	0	0	0	0	0
Travel	0	0	0	1,731	(1,731)	0	1,731	(1,731)
Insurance	0	0	0	0	0	0	0	0
Project Expenses	0	21,373	(21,373)	6,000	(6,000)	0	6,000	(6,000)
Non-Cash Expenses (Gains)	0	0	0	0	0	0	0	0
Depreciation and Amortization	85,456	95,099	(9,643)	92,410	(6,954)	85,456	92,410	(6,954)
<b>Total Operating Expenses</b>	<b>6,897,732</b>	<b>7,150,032</b>	<b>(252,300)</b>	<b>8,081,196</b>	<b>(1,183,464)</b>	<b>6,897,732</b>	<b>8,081,196</b>	<b>(1,183,464)</b>
<b>OPERATING INCOME</b>	<b>\$4,636,274</b>	<b>\$7,509,791</b>	<b>(\$2,873,517)</b>	<b>\$17,111,772</b>	<b>(\$12,475,498)</b>	<b>\$4,636,274</b>	<b>\$17,111,772</b>	<b>(\$12,475,498)</b>

MWAAs Aviation Enterprise Comparative  
Income Statement - Washington Dulles  
International Airport (IAD)

Period: 2021 - Jan

Income Statement	Current Month	Prior Month	Variance	Current Month (Prior Year)	Variance	Year-to-Date	Year-to-Date (Prior Year)	Variance
<b>OPERATING REVENUES</b>								
Concessions	\$6,912,411	\$7,848,408	(\$935,997)	\$18,271,642	(\$11,359,231)	\$6,912,411	\$18,271,642	(\$11,359,231)
Rents	12,588,552	12,380,702	207,850	14,367,500	(1,778,948)	12,588,552	14,367,500	(1,778,948)
Landing Fees	834,923	2,059,419	(1,224,496)	2,862,932	(2,028,008)	834,923	2,862,932	(2,028,008)
Utility Sales	981,995	687,627	294,368	858,786	123,209	981,995	858,786	123,209
International Arrival Fees	373,427	273,258	100,169	1,334,235	(960,808)	373,427	1,334,235	(960,808)
Passenger Conveyance Fees	108,242	(481,837)	590,079	461,144	(352,901)	108,242	461,144	(352,901)
Security Fees	29,760	29,760	0	29,760	0	29,760	29,760	0
Other	524,124	(59,966)	584,090	637,064	(112,940)	524,124	637,064	(112,940)
<b>Total Operating Revenue</b>	<b>22,353,435</b>	<b>22,737,372</b>	<b>(383,937)</b>	<b>38,823,062</b>	<b>(16,469,627)</b>	<b>22,353,435</b>	<b>38,823,062</b>	<b>(16,469,627)</b>
<b>OPERATING EXPENSES</b>								
Salaries and Related Benefits	4,011,431	4,950,167	(938,736)	5,260,064	(1,248,633)	4,011,431	5,260,064	(1,248,633)
Services	5,809,610	6,565,432	(755,822)	6,497,273	(687,663)	5,809,610	6,497,273	(687,663)
Materials and Supplies	498,586	1,065,268	(566,683)	1,387,994	(889,408)	498,586	1,387,994	(889,408)
Lease from U.S. Government	0	0	0	0	0	0	0	0
Utilities	1,298,649	1,356,605	(57,957)	1,643,847	(345,199)	1,298,649	1,643,847	(345,199)
Telecommunications	0	0	0	0	0	0	0	0
Travel	0	(162)	162	920	(920)	0	920	(920)
Insurance	0	0	0	0	0	0	0	0
Project Expenses	0	0	0	0	0	0	0	0
Non-Cash Expenses (Gains)	0	0	0	0	0	0	0	0
Depreciation and Amortization	200,749	189,111	11,638	274,317	(73,568)	200,749	274,317	(73,568)
<b>Total Operating Expenses</b>	<b>11,819,024</b>	<b>14,126,422</b>	<b>(2,307,398)</b>	<b>15,064,416</b>	<b>(3,245,392)</b>	<b>11,819,024</b>	<b>15,064,416</b>	<b>(3,245,392)</b>
<b>OPERATING INCOME</b>	<b>\$10,534,411</b>	<b>\$8,610,950</b>	<b>\$1,923,461</b>	<b>\$23,758,646</b>	<b>(\$13,224,235)</b>	<b>\$10,534,411</b>	<b>\$23,758,646</b>	<b>(\$13,224,235)</b>

MWAA Aviation Enterprise Comparative  
Income Statement - Public Safety (PSD)

Period: 2021 - Jan

Income Statement	Current Month	Prior Month	Variance	Current Month (Prior Year)	Variance	Year-to-Date	Year-to-Date (Prior Year)	Variance
<b>OPERATING REVENUES</b>								
Other	48,400	11,936	36,463	61,787	(13,387)	48,400	61,787	(13,387)
Total Operating Revenue	48,400	11,936	36,463	61,787	(13,387)	48,400	61,787	(13,387)
<b>OPERATING EXPENSES</b>								
Salaries and Related Benefits	4,849,692	5,214,662	(364,970)	5,150,940	(301,247)	4,849,692	5,150,940	(301,247)
Services	60,922	143,716	(82,794)	60,809	113	60,922	60,809	113
Materials and Supplies	90,195	105,630	(15,435)	55,992	34,203	90,195	55,992	34,203
Lease from U.S. Government	0	0	0	0	0	0	0	0
Utilities	0	0	0	0	0	0	0	0
Telecommunications	0	0	0	0	0	0	0	0
Travel	2,058	(1,467)	3,524	2,185	(127)	2,058	2,185	(127)
Insurance	0	0	0	0	0	0	0	0
Project Expenses	0	0	0	3	(3)	0	3	(3)
Non-Cash Expenses (Gains)	0	0	0	0	0	0	0	0
Depreciation and Amortization	14,951	14,318	633	20,303	(5,352)	14,951	20,303	(5,352)
Total Operating Expenses	5,017,818	5,476,860	(459,042)	5,290,232	(272,414)	5,017,818	5,290,232	(272,414)
<b>OPERATING INCOME</b>	<b>(4,969,418)</b>	<b>(5,464,924)</b>	<b>495,506</b>	<b>(5,228,445)</b>	<b>259,027</b>	<b>(4,969,418)</b>	<b>(5,228,445)</b>	<b>259,027</b>

MWAA Aviation Enterprise Comparative  
Income Statement - Parking

10:00 PM  
03/11/2021  
Page 1 of 1

Period: 2021 - Jan

Income Statement	Current Month	Prior Month	Variance	Current Month (Prior Year)	Variance	Year-to-Date	Year-to-Date (Prior Year)	Variance
<b>OPERATING REVENUES</b>								
Concessions	\$2,355,458	\$2,311,083	\$44,375	\$9,670,743	(\$7,315,285)	\$2,355,458	\$9,670,743	(\$7,315,285)
Other	0	0	0	0	0	0	0	0
<b>Total Operating Revenue</b>	<b>2,355,458</b>	<b>2,311,083</b>	<b>44,375</b>	<b>9,670,743</b>	<b>(7,315,285)</b>	<b>2,355,458</b>	<b>9,670,743</b>	<b>(7,315,285)</b>
<b>OPERATING EXPENSES</b>								
Salaries and Related Benefits	0	0	0	0	0	0	0	0
Services	1,345,248	1,077,857	267,391	2,710,715	(1,365,466)	1,345,248	2,710,715	(1,365,466)
Materials and Supplies	29,979	40,639	(10,660)	50,413	(20,434)	29,979	50,413	(20,434)
Lease from U.S. Government	0	0	0	0	0	0	0	0
Utilities	31,964	32,021	(57)	31,500	464	31,964	31,500	464
Telecommunications	0	0	0	0	0	0	0	0
Travel	0	0	0	0	0	0	0	0
Insurance	0	0	0	0	0	0	0	0
Project Expenses	0	0	0	0	0	0	0	0
Non-Cash Expenses (Gains)	0	0	0	0	0	0	0	0
Depreciation and Amortization	802,863	802,941	(78)	818,294	(15,431)	802,863	818,294	(15,431)
<b>Total Operating Expenses</b>	<b>2,210,054</b>	<b>1,953,458</b>	<b>256,596</b>	<b>3,610,921</b>	<b>(1,400,867)</b>	<b>2,210,054</b>	<b>3,610,921</b>	<b>(1,400,867)</b>
<b>OPERATING INCOME</b>	<b>145,404</b>	<b>357,625</b>	<b>(212,222)</b>	<b>6,059,822</b>	<b>(5,914,418)</b>	<b>145,404</b>	<b>6,059,822</b>	<b>(5,914,418)</b>



MWAA Aviation Enterprise Comparative  
Income Statement - Telecommunications

Period: 2021 - Jan

Income Statement	Current Month	Prior Month	Variance	Current Month (Prior Year)	Variance	Year-to-Date	Year-to-Date (Prior Year)	Variance
<b>OPERATING REVENUES</b>								
Telecommunications	615,587	414,660	200,927	418,339	197,248	615,587	418,339	197,248
Total Operating Revenue	615,587	414,660	200,927	418,339	197,248	615,587	418,339	197,248
<b>OPERATING EXPENSES</b>								
Salaries and Related Benefits	0	0	0	0	0	0	0	0
Services	691	2,831	(2,140)	815	(123)	691	815	(123)
Materials and Supplies	0	(3)	3	0	0	0	0	0
Lease from U.S. Government	0	0	0	0	0	0	0	0
Utilities	0	0	0	0	0	0	0	0
Telecommunications	260,635	646,859	(386,224)	194,583	66,051	260,635	194,583	66,051
Travel	0	0	0	0	0	0	0	0
Insurance	0	0	0	0	0	0	0	0
Project Expenses	0	0	0	0	0	0	0	0
Non-Cash Expenses (Gains)	0	0	0	0	0	0	0	0
Depreciation and Amortization	1,428	915	513	1,207	221	1,428	1,207	221
Total Operating Expenses	262,754	650,602	(387,848)	196,605	66,150	262,754	196,605	66,150
<b>OPERATING INCOME</b>	<b>352,833</b>	<b>(235,942)</b>	<b>588,775</b>	<b>221,734</b>	<b>131,098</b>	<b>352,833</b>	<b>221,734</b>	<b>131,098</b>

MWAA Aviation Enterprise Comparative  
Income Statement - FAA Air Traffic Control  
Tower

Period: 2021 - Jan

Income Statement	Current Month	Prior Month	Variance	Current Month (Prior Year)	Variance	Year-to-Date	Year-to-Date (Prior Year)	Variance
<b>OPERATING REVENUES</b>								
Rents	299,626	299,626	0	298,720	906	299,626	298,720	906
Utility Sales	0	29,290	(29,290)	16,659	(16,659)	0	16,659	(16,659)
Total Operating Revenue	299,626	328,916	(29,290)	315,379	(15,753)	299,626	315,379	(15,753)
<b>OPERATING EXPENSES</b>								
Salaries and Related Benefits	0	0	0	0	0	0	0	0
Services	36,156	6,858	29,297	7,485	28,670	36,156	7,485	28,670
Materials and Supplies	0	0	0	0	0	0	0	0
Lease from U.S. Government	0	0	0	0	0	0	0	0
Utilities	0	0	0	0	0	0	0	0
Telecommunications	0	0	0	0	0	0	0	0
Travel	0	51	(51)	0	0	0	0	0
Insurance	0	0	0	0	0	0	0	0
Project Expenses	0	0	0	0	0	0	0	0
Non-Cash Expenses (Gains)	0	0	0	0	0	0	0	0
Depreciation and Amortization	0	0	0	0	0	0	0	0
Total Operating Expenses	36,156	6,909	29,246	7,485	28,670	36,156	7,485	28,670
<b>OPERATING INCOME</b>	<b>263,470</b>	<b>322,007</b>	<b>(58,536)</b>	<b>307,894</b>	<b>(44,423)</b>	<b>263,470</b>	<b>307,894</b>	<b>(44,423)</b>

MWAA Aviation Enterprise Comparative  
Income Statement - 45025 Aviation Drive

Period: 2021 - Jan

Income Statement	Current Month	Prior Month	Variance	Current Month (Prior Year)	Variance	Year-to-Date	Year-to-Date (Prior Year)	Variance
<b>OPERATING REVENUES</b>								
Concessions	\$3,090	\$2,883	\$207	\$3,703	(\$613)	\$3,090	\$3,703	(\$613)
Rents	92,106	92,106	0	89,076	3,029	92,106	\$89,076	\$3,029
Utility Sales	0	213	(213)	41	(41)	0	41	(41)
Total Operating Revenue	95,196	95,202	(6)	92,820	2,376	95,196	92,820	2,376
<b>OPERATING EXPENSES</b>								
Salaries and Related Benefits	0	0	0	0	0	0	0	0
Services	15,182	13,892	1,290	15,201	(19)	15,182	15,201	(19)
Materials and Supplies	0	(1)	1	0	0	0	0	0
Lease from U.S. Government	0	0	0	0	0	0	0	0
Utilities	19,714	18,032	1,683	19,320	394	19,714	19,320	394
Telecommunications	0	0	0	0	0	0	0	0
Travel	0	0	0	0	0	0	0	0
Insurance	0	0	0	0	0	0	0	0
Project Expenses	0	0	0	0	0	0	0	0
Non-Cash Expenses (Gains)	0	0	0	0	0	0	0	0
Depreciation and Amortization	1,763	1,763	0	52,575	(50,811)	1,763	52,575	(50,811)
Total Operating Expenses	36,660	33,886	2,974	87,096	(50,436)	36,660	87,096	(50,436)
OPERATING INCOME	58,536	61,516	(2,980)	5,724	52,812	58,536	5,724	52,812

MWAAs Aviation Enterprise Comparative  
Income Statement - 45045 Aviation Drive (Dulles East)

Period: 2021 - January

Income Statement	Current Month	Prior Month	Variance	Current Month (Prior Year)	Variance	Year-to-Date	Year-to-Date (Prior Year)	Variance
<b>OPERATING REVENUES</b>								
Rents	85,726	85,726	0	85,726	0	85,726	85,726	0
Total Operating Revenue	85,726	85,726	0	85,726	0	85,726	85,726	0
<b>OPERATING EXPENSES</b>								
Salaries and Related Benefits	0	0	0	0	0	0	0	0
Services	9,089	18,790	(9,700)	11,183	(2,094)	9,089	11,183	(2,094)
Materials and Supplies	0	63	(63)	759	(759)	0	759	(759)
Lease from U.S. Government	0	0	0	0	0	0	0	0
Utilities	22,676	19,508	3,168	21,978	698	22,676	21,978	698
Telecommunications	0	0	0	0	0	0	0	0
Travel	0	0	0	0	0	0	0	0
Insurance	0	0	0	0	0	0	0	0
Project Expenses	0	0	0	0	0	0	0	0
Non-Cash Expenses (Gains)	0	0	0	0	0	0	0	0
Depreciation and Amortization	21,583	21,583	0	21,583	0	21,583	21,583	0
Total Operating Expenses	53,348	59,943	(6,595)	55,503	(2,155)	53,348	55,503	(2,155)
OPERATING INCOME	32,378	25,782	6,595	30,223	2,155	32,378	30,223	2,155

MWAA Aviation Enterprise Comparative  
Income Statement - 44965 Aviation Drive (Dulles West)

Period: 2021 - January

Income Statement	Current Month	Prior Month	Variance	Current Month (Prior Year)	Variance	Year-to-Date	Year-to-Date (Prior Year)	Variance
<b>OPERATING REVENUES</b>								
Rents	6,100	6,100	0	6,100	0	6,100	6,100	0
Utility Sales	0	33,526	(33,526)	18,638	(18,638)	0	18,638	(18,638)
<b>Total Operating Revenue</b>	<b>6,100</b>	<b>39,625</b>	<b>(33,526)</b>	<b>24,738</b>	<b>(18,638)</b>	<b>6,100</b>	<b>24,738</b>	<b>(18,638)</b>
<b>OPERATING EXPENSES</b>								
Salaries and Related Benefits	0	0	0	0	0	0	0	0
Services	287	52	235	0	287	287	0	287
Materials and Supplies	0	0	0	0	0	0	0	0
Lease from U.S. Government	0	0	0	0	0	0	0	0
Utilities	0	0	0	0	0	0	0	0
Telecommunications	0	0	0	0	0	0	0	0
Travel	0	0	0	0	0	0	0	0
Insurance	0	0	0	0	0	0	0	0
Project Expenses	0	0	0	0	0	0	0	0
Non-Cash Expenses (Gains)	0	0	0	0	0	0	0	0
Depreciation and Amortization	0	0	0	0	0	0	0	0
<b>Total Operating Expenses</b>	<b>287</b>	<b>52</b>	<b>235</b>	<b>0</b>	<b>287</b>	<b>287</b>	<b>0</b>	<b>287</b>
<b>OPERATING INCOME</b>	<b>5,813</b>	<b>39,573</b>	<b>(33,760)</b>	<b>24,738</b>	<b>(18,925)</b>	<b>5,813</b>	<b>24,738</b>	<b>(18,925)</b>



MWAA AVI - O & M Budget to Actual

Period: 2021 - January

AVI O & M Budget to Actual	MTD - Actual	MTD - Budget	MTD Variance	YTD - Actual	YTD - Budget	YTD Variance	Annual Budget	Annual Budget Remaining
<b>OPERATING REVENUES</b>								
Concessions	\$8,722,997	\$9,070,259	(\$347,262)	\$8,722,997	\$9,070,259	(\$347,262)	\$201,088,627	\$192,365,630
Rents	20,527,809	19,932,940	594,869	20,527,809	19,932,940	594,869	252,406,047	231,878,238
Landing Fees	2,135,457	1,761,351	374,106	2,135,457	1,761,351	374,106	55,843,484	53,708,027
Utility Sales	1,369,846	1,233,173	136,673	1,369,846	1,233,173	136,673	13,780,680	12,410,834
International Arrival Fees	373,427	103,223	270,203	373,427	103,223	270,203	7,084,583	6,711,156
Passenger Conveyance Fees	108,242	108,242	(0)	108,242	108,242	(0)	1,298,907	1,190,665
Security Fees	79,360	79,360	0	79,360	79,360	0	934,400	855,040
Other	628,967	782,622	(153,655)	628,967	782,622	(153,655)	9,688,504	9,059,537
<b>Total Operating Revenues</b>	<b>33,946,104</b>	<b>33,071,170</b>	<b>874,934</b>	<b>33,946,104</b>	<b>33,071,170</b>	<b>874,934</b>	<b>542,125,233</b>	<b>508,179,129</b>
<b>OPERATING EXPENSES</b>								
Salaries and Related Benefits	16,016,022	17,213,264	(1,197,242)	16,016,022	17,213,264	(1,197,242)	193,084,666	177,068,644
Services	9,386,138	11,696,618	(2,310,480)	9,386,138	11,696,618	(2,310,480)	125,426,921	116,040,783
Materials and Supplies	1,655,693	2,750,843	(1,095,150)	1,655,693	2,750,843	(1,095,150)	21,399,797	19,744,104
Lease from U.S. Government	499,000	509,879	(10,879)	499,000	509,879	(10,879)	6,108,663	5,609,663
Utilities	1,965,452	2,435,809	(470,357)	1,965,452	2,435,809	(470,357)	25,401,373	23,435,921
Telecommunication	271,547	287,638	(16,091)	271,547	287,638	(16,091)	4,270,558	3,999,011
Travel	650	3,734	(3,084)	650	3,734	(3,084)	204,149	203,499
Insurance	561,484	649,964	(88,480)	561,484	649,964	(88,480)	7,916,852	7,355,368
Project Expenses	0	0	0	0	0	0	0	0
Non-Cash Expenses (Gains)	0	0	0	0	0	0	0	0
Depreciation and Amortization	395,273	0	395,273	395,273	0	395,273	0	(395,273)
<b>Total Operating Expenses</b>	<b>30,751,260</b>	<b>35,547,749</b>	<b>(4,796,489)</b>	<b>30,751,260</b>	<b>35,547,749</b>	<b>(4,796,489)</b>	<b>383,812,980</b>	<b>353,061,719</b>
<b>OPERATING INCOME</b>	<b>3,194,843</b>	<b>(2,476,579)</b>	<b>5,671,423</b>	<b>3,194,843</b>	<b>(2,476,579)</b>	<b>5,671,423</b>	<b>158,312,253</b>	<b>155,117,409</b>
<b>NON-OPERATING REVENUES (EXPENSES)</b>								
Investment Gains (Losses)	(239,613)	0	(239,613)	(239,613)	0	(239,613)	0	239,613
Interest Expense	(12,226)	0	(12,226)	(12,226)	0	(12,226)	0	12,226
Federal, State and local grants	56,555	0	56,555	56,555	0	56,555	0	(56,555)
Fair Value Gain (Loss) on Swaps	0	0	0	0	0	0	0	0
Other Gain (Loss)	0	0	0	0	0	0	0	0
<b>Total Non-Operating Revenues (Expenses)</b>	<b>(195,284)</b>	<b>0</b>	<b>(195,284)</b>	<b>(195,284)</b>	<b>0</b>	<b>(195,284)</b>	<b>0</b>	<b>195,284</b>
<b>GAIN (LOSS) BEFORE CAPITAL CONTRIBUTIONS</b>	<b>2,999,560</b>	<b>(2,476,579)</b>	<b>5,476,139</b>	<b>2,999,560</b>	<b>(2,476,579)</b>	<b>5,476,139</b>	<b>158,312,253</b>	<b>155,312,693</b>
<b>CAPITAL CONTRIBUTIONS</b>								
Passenger Facility Charges	0	0	0	0	0	0	0	0
Federal, State and Local Grants	0	0	0	0	0	0	0	0
Net Contributions from (to) Other Governments	27,500,000	0	27,500,000	27,500,000	0	27,500,000	0	(27,500,000)
<b>Total Capital Contributions</b>	<b>27,500,000</b>	<b>0</b>	<b>27,500,000</b>	<b>27,500,000</b>	<b>0</b>	<b>27,500,000</b>	<b>0</b>	<b>(27,500,000)</b>
<b>INCREASE (DECREASE) IN NET POSITION</b>	<b>\$30,499,560</b>	<b>(\$2,476,579)</b>	<b>\$32,976,139</b>	<b>\$30,499,560</b>	<b>(\$2,476,579)</b>	<b>\$32,976,139</b>	<b>\$158,312,253</b>	<b>\$127,812,693</b>